

Product introduction

F-126E which is the universal remote control with full-featured and model appearance is a newly developed product of SUOER company, it is used for the air-conditioner. The most obvious trait is that the product's compatibility is reached 99%. If you are still worry for finding an original remote control, this new product will bring you a surprise!

Battery Installation

Opening the battery cover, according to the mark "+" / "-" side, then putting two pieces of Size AAA (No.7) alkalines (Portionless), as the following picture:



1. The Remote Controller has a function of stopping memory power. When it changes battery or stops power, if the time isn't more than 48 hours, it needn't reset the code. Or it maybe lost initial reset, you must reset the code.
2. The Remote Controller owes progressively energysaving pattern. The quiescent current approaches zero. It is more electricity saving than before. Under normal condition, the useful life of battery is about 12 months. If you improper operation, the useful life of battery will be shorter.
3. Don't use mixture between new and old battery or different models of batteries.
4. If battery has some spillage, you must put battery out, and then clean the battery's space and replacing new one. If you are going to not use the Remote Controller for a long time, you'd better take them out.

Keystroke Instructions



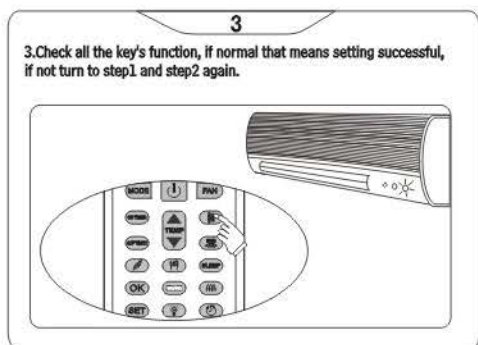
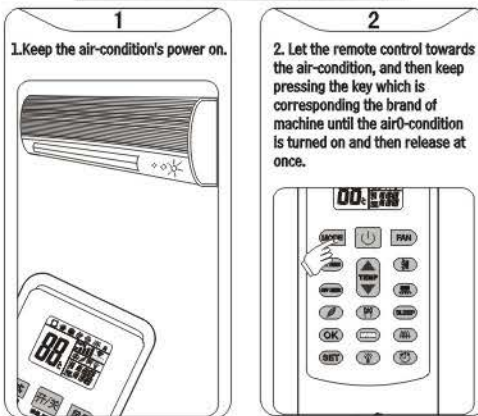
1. Power button
2. Temperature "+"
3. Temperature "-"
4. Mode button
5. Wind direction of up and down
6. Wind direction of left and right
7. Wind strength button
8. Confirmation button
9. Setup button
10. Autostop
11. Autostart
12. Clock button
13. Operation mode
14. Temperature display
15. Wind strength display
16. Manual or Auto-wind directions
17. Autostop display
18. Autostart display
19. Air cycle (brand key)
20. sleep function
21. powerful function
22. economy function
23. radiating function
24. Light

Hotel energy-saving mode

Press "SET" and "FAN" key at the same time, release after three seconds later, if operate again, that means quit this mode. In this mode, you just can adjust the temperature between 26 to 30 degree when in the cooling condition; and it just can be adjust between 16 to 20 degree when in the heating condition.

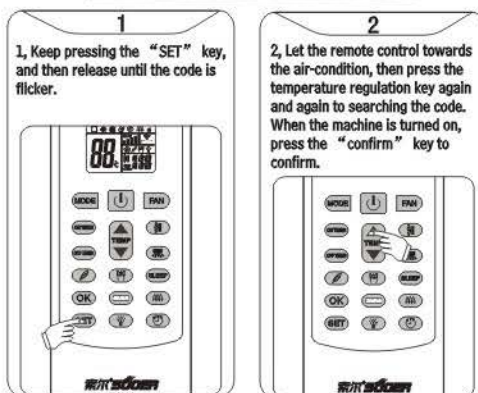
Input stage of code setup

Brand code searching directly

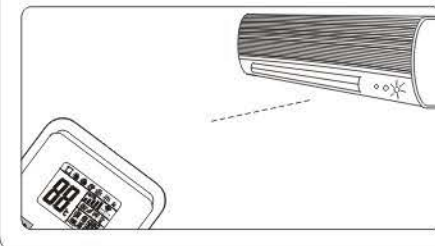


※ If your air-condition's brand is not including on the panel, please using the following setting method

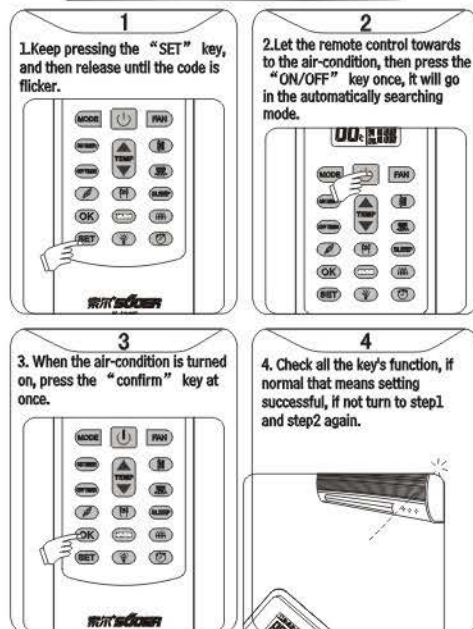
Search by hand



3. Check all the key's function, if normal that means setting successful, if not turn to step1 and step2 again.



Searching automatically



Problem Solving

When you are using or setting up the controller:

1. Checking your Air-Conditioner is on working state or not.
2. Checking it has batteries or not and the polarity of battery is right or not.
3. Ensure that your Air-conditioner receiver is working in order. If your Air-conditioner is not receiving it properly, it won't able to function by this remote controller.
4. If this remote controller gets the wrong operation, it maybe stop working. In this case, you take batteries out and repeat to setup after twenty minutes.

child lock function

Lock: keep pressing the "light" key until there is a small lock appear on the upper right corner of the screen.

Unlock: keep press "radiating" key until the small lock is disappear. Tips: after setting the code absolutely right, please lock it to prevent losing the code.

This function is make the remote control lose the setting function, avoiding the code lose by wrong operation, it won't has any affect to the remote's performance.

technical parameter

sheathing material: ABS
Remote Distance: More than ten meters (According to different model)
Power Model: DC 3V
Battery Model: Size AAA(No.7) two pieces of alkalies batteries
Useful life of battery: About 12 months of under ordinary usage

After sale service

When you are using the Remote Controller that it has any problems, please contact us or agency. We will try our best to offer excellent service. You can't take it apart without permission. If you do like that, we don't assume the responsibility.

Timing use method

This product's timing function is the same as the original remote control. Step: 1. When pressing the key of "timing on" or "timing off", the timing display bar will flicker.

2. Press the key of "+" or "-" to select the time you want to timing.
 3. let the remote control towards to the air-condition and then press the key of "timing on" or "timing off" once.
- Cancel timing: let the remote control towards to the air-condition and then press the key of "timing on" or "timing off" once.
- Attention: some of the air-conditions' "timing off" function are the same with the "sleep" function.

CODE FORM FOR THE COMPONENTS

BRAND	CODE	BRAND	CODE
GREE	000-024	GARRIER	490-494
MD/TOSHIBA	025-044	LANBO	495-499
CHANGHONG	045-074	XINFEN	500-504
CHIGO	075-109	MCQUAY	505-509
PANASONIC	110-139	HUIFENG	510-512
HAIER	140-164	NANFENG	513-514
MITSUBISHI	165-204	DAEWOO	515-516
GALANZ	205-224	SAST	517-518
KELONG/HUABAO	225-249	SHENG FENG	519-520
AUX	250-274	YANGZI	521-525
SHARP/XINGBAO	275-294	WANBAO	526-530
DAIKIN	295-319	BOERKA	531-535
HISENSE	320-339	TIANYUAN	536-540
FUJITSU	340-359	TOBO	541-545
HUALING	360-384	FEILU	546-548
LG	385-394	UTLEDUCK	549-551
HITACHI	395-409	SHUANGLU	552-553
TCL	410-424	LINGYU	554-555
SANYO	425-439	LITTLESWAN	556-558
WHIRLPOOL	440-444	SOVA	559-561
ROWA	445-449	LANGE	562-563
ELECTROLUX	450-459	CROWN	564-565
YORK	460-469	ZHONGLI	566-567
AUCMA	470-474	TALANDI	568-569
CHUANLAN	475-479	WUFENG	570-571
SHINCO	480-484	ALL BRANG	572-610
SAMSUNG	485-489	OTHER BRANG	611-999

Attention: 000-024 means the consequent code from 000 to 024.

[Http://www.chinasuoer.com](http://www.chinasuoer.com)