

Chromatography Data Reduction Reporting for EZChrom *Elite*™ CDS and Agilent OL Operating System for the Laboratory

Specifications

- Optimize formats to fit customer needs.
- Manage the size and location of graphics.
- Easily develop report templates without the need for programming.
- Generate powerful summary reports from a complete sequence.
- Incorporate all appropriate information in a single report.
- Use custom report templates in multiple analyses.

The chromatography data reduction reporting capabilities of Agilent Technologies EZChrom *Elite* Chromatography Data System and Agilent OL Operating System for the Laboratory provide the chromatography a powerful and flexible way to produce a wide variety of reports. Some of these powerful reporting capabilities are invoked through simple menu or checkbox selections in the software and can automatically apply to each injection. Others can be activated and used for multiple injections in sequences. For example, a custom report may be developed for a specific method, or a template can be designed to properly fit into your laboratory requirements. If protection is an issue, the built-in security features of EZChrom *Elite* allow either complete design control of a report or template, or no access to edit them after they have been developed. You have the freedom to edit reports or templates at any time, or have them completely protected to prevent inadvertent changes.



Agilent Technologies

Basic Method Reports

Method custom reports are intended for *single injection analysis*. The software is shipped with a number of standard Method Custom Reports for typical applications (Area Percent Report, Normalized Report, Internal Standard Report, etc.). Method Custom Reports are setup and identified as part of the software method and are executed for each injection. They utilize a WYSIWYG user interface and provide control of the reporting objects as well as the graphic presentation. It is very easy for a user to access a Method Custom Report, modify it for their needs, and then use it for data acquisition.

Sequence Reports

Sequence reports are similar to the Method Custom Reports except that they are intended to operate on a sequence of *multiple injections*. If users are working with Sequence Custom Reports they can create reports that provide summaries of all the injection data. Similar to Method Custom Reports, the Sequence Custom Reports can be easily modified and customized. A number of standard Sequence Custom Reports are provided in the software.

A spreadsheet-style summary report has the ability to display your sequence results in an unlimited number of ways. A Table Wizard and Function Wizard are included to assist in generating templates unique to your application. For added convenience, sequence summary templates are also available. The example report was generated using one of the prebuilt summary templates.

Customized Run Reports

The Custom Report has a broad selection of report tools, including the highly flexible Run Report. The Run Report offers a selection of up to 42 different standard parameters, with room for 24 custom parameters. Once the parameters are selected, you have the ability to edit the name, font, column size, number of significant digits for numbers, and a variety of other styles.

Comprehensive Information in One Report

Insert objects, files, and graphics into the report so all the information is in one place. Insert your company logo into the template so it can be displayed on every page or any page.

Critical Data Protection

Some data systems use word processors for custom report generation. Under these circumstances, the results may be edited. Although EZChrom *Elite* and Agilent OL are leaders in offering flexible custom reports, the chromatographic data that is generated in them is protected and therefore cannot be edited, altered, or changed in any fashion.

User-Friendly Commands

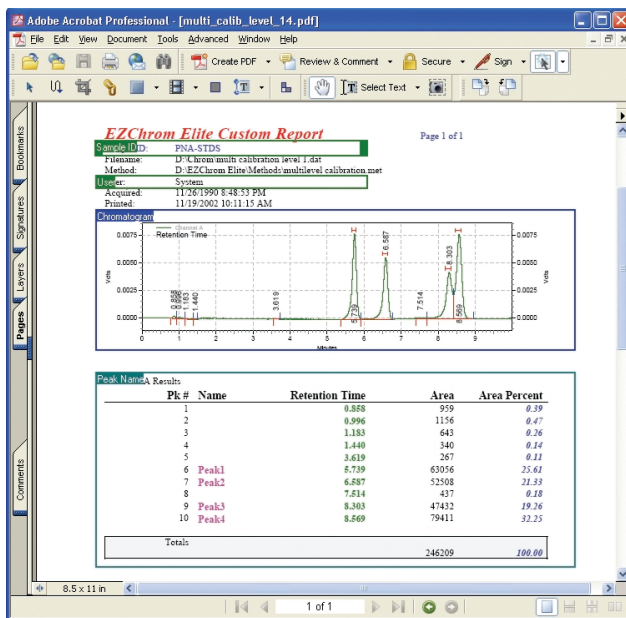
All functions are described in English, with no codes to remember. Reports and templates are designed using simple word processor-type commands. Therefore, templates can be written without resorting to a listing of specialized codes or a help file.

Easily Modified Chromatogram Display

The Custom Report has the ability to resize graphs and objects in the report. In order to have a zoomed-in section of the graph, just select the area with the mouse and it is resized. This eliminates the guesswork of scale settings. Objects can be resized and moved on templates for the perfect presentation. In addition, the trace and the zoomed sections, and even previous runs, can be included in the report.

Customized Report Templates

For situations where users wish to have a common report format for their laboratory, a custom report template is very easy to create. A template can be as many or as few pages as desired. Headers and footers can be edited so multipage reports will have the same information.



A template can be stored and displayed as a separate report selection as part of the method. For example, if you require a retention time drift report, a template called "Retention Time Drift" is created, with a table comparing expected-versus-actual retention times. The report is then displayed as a standard selection.

A number of templates are already available. EZChrom *Elite* and Agilent OL come standard with Area % and Internal Standard, External Standard, and Normalization report templates. Your company logo, specialized header information, or even text can be added to these templates.

Electronic Signoff on Results

EZChrom *Elite* has the permission rights to sign off on results and display the approval on the report. As with all GLP functions, this is dependent on security level. A lab protocol may be developed whereby one user has the rights to log onto an instrument, and another has the rights to sign off on the report.

Visit www.agilent.com/chem/scisw
or call toll free **1-800-227-9770**
(U.S. and Canada).

In other countries, please call your local
Agilent Technologies analytical sales office or
Authorized Agilent Technologies Distributor.

This information is subject to change without notice.
© Agilent Technologies, Inc. 2006
Printed in U.S.A. May 26, 2006
5989-3717EN



Agilent Technologies