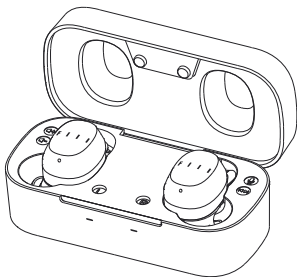




THE ART OF AUDIO



F I I I T1 X

TRUE WIRELESS EARBUDS

USER MANUAL

Important Safety Instructions

Please read the following safety instructions carefully before using this product. Please make sure to include these safety instructions with the product when deliver to a third party.

Health and safety

- Do not use the product in case it is apparently damaged;
- Do not use the product at a high volume level for an extended period of time;
- Do not use the product while driving or being engaged in activities that require full concentration;
- Keep the product, its packaging and accessories out of the reach of children and pets to avoid choking hazard;
- Keep the product away from medical devices that may be affected by magnetic field, such as an implanted cardiac pacemaker.

Product care

- Keep this product dry and at room temperature, avoid long time exposure to high temperature or humidity environments;
- Use accessories only provided by fiil;
- Excessive signal level may cause damaging overload;
- Clean the product only with dry and soft cloth.

Battery warning!

The product uses lithium polymer battery. Improper usage may lead to the risk of fire or burn. Please use the charger only supplied by qualified manufacturer (recommended output: voltage 5V, current ~500mA) or charge the product via PC USB port.

Specification and disclaimer

- The product is designed for portable devices and high-fidelity systems;
- Any usage other than those specified in the user manual is deemed as misuse;
- Please note that FIIL will accept no responsibility for any loss incurred by misuse.
- FIIL T1 X is designed by Fengfan(Beijing) Technology Co., Ltd. and made by Fengfan(Suzhou) Audio Tech. Co., Ltd.
- ‘FIIL’ is a registered trademark[®] of Fengfan (Beijing) Technology Co., Ltd.

Packaging Content



Earbuds X2
(L/R)



Charging Case X1



Earwings X3
L/M/S



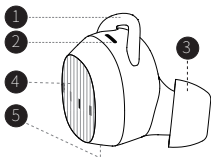
Eartips X4
L/M/S/XS



**Type C Charging
Cable X1**

Main User Interfaces

● Earbud



1 Earwing

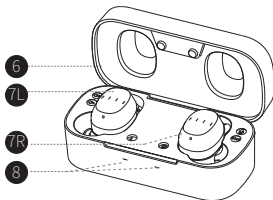
2 LED indicator

3 Eartip

4 Touch control

5 Microphone

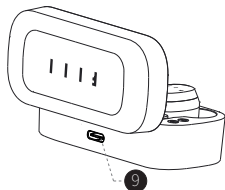
● Charging Case



6 Charging Case Cover

7L Left earbud

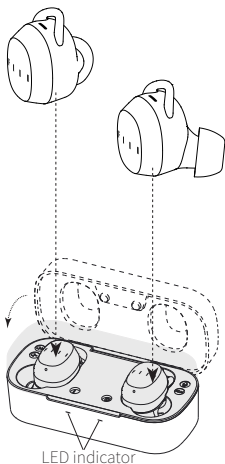
7R Right earbud



8 Charge indicators

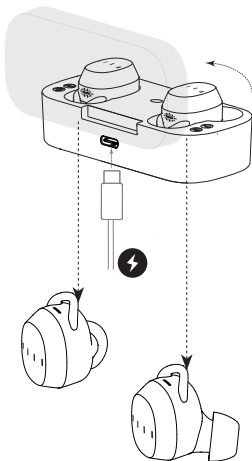
9 Type C connector

Get Started



● STEP1

Put earbuds into charging case and close the cover. Please connect USB cable to charge more than 10min if charging case's LED does not light on.



● STEP2

Open the charging case then earbuds will automatically get sync and enter pairing mode without any manual operation

*Notes : Please charge the charging case via USB adapter in advance.

Bluetooth Pairing

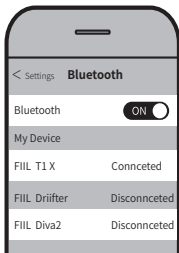
● Bluetooth pairing

For first usage of brand new FIIL T1 X, please refer to page5 “Get Started”, the earbud status indicator will continue to blink blue once entered pairing mode.

To begin a new bluetooth pairing, please press and hold any one of earbuds until the LED indicator blinks blue, when the earbuds are turned off.

● Search Connection

Enter setup menu of audio source devices, select “search device” in “Bluetooth” then select “FIIL T1 X” in the device list to connect.



Earbuds Sync

● Auto-Sync

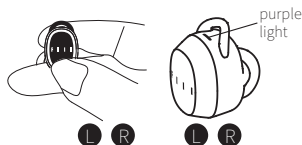
Please refer to page5 “Get Started”, the left and right earbuds will automatically get synced after Step2.

● Manual Sync



Step 1 - Power Off earbuds

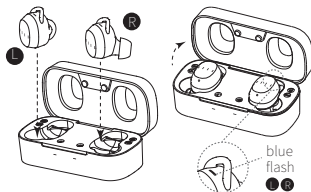
Press and hold both earbuds at the same time, do not release your fingers until both red lights are on.



Step 2 - Reset Sync

Press and hold the earbuds again, do not release your fingers until the purple light comes on.

Note: Please hold your finger until purple light and ignore all other lights during above process.

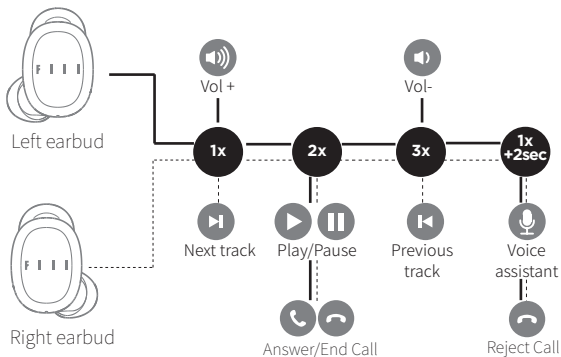


Step 3 - Reconnect bluetooth

① Put earbuds back in the charging case and close it;
② Delete the "FIIL T1 X" in your bluetooth device list;
③ Repeat the "Search Connection" in Bluetooth Pairing(Page 6);
*Notes: If a purple light comes on in earbud during ③, please **do not** connect Bluetooth but repeat ① and wait a little longer, or repeat "Step 2 -Reset Sync".

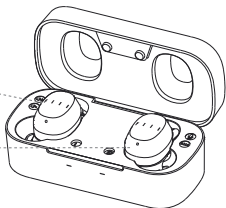
How to Control

● User Interface



Left earbud

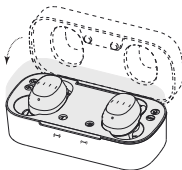
Right earbud



How to charge

● Charge earbud

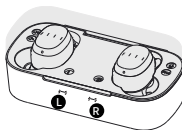
- When earbud reminds “recharge headset” or the LED indicator blinks red , that means battery is low and earbud should be charged.
- Place the earbuds into charging case and close, then earbud will be charged.



*Notes: Earbud will power off during charging.

● Charging Case indicator

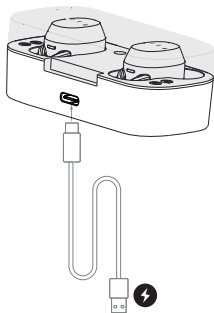
- When the red LED indicator (left or right) is on, it means the corresponding earbud is being charged .
- When the red LED indicator is off, it means the corresponding earbud is fully charged .



How to charge

● Recharge Charging Case

- When charging case is not able to charge earbud or its LED indicator blinks red, it means battery low and charging case should be recharged.
- Please connect Type C cable with USB adapter to recharge charging case.



● Charging Case indicator

- When both red LED indicators are light on, it means the charging case is being charged.
- When both red LED indicators are light off, it means the charging case and earbuds are fully charged.



Product Parameters

Item	Specifications
Earbud weight	~4.8g/each
Charging case weight	~40g
User Mode	Bluetooth True Wireless
Bluetooth	V5.0, supported protocols: HSP , HFP , A2DP , AVRCP BT range: up to 30m. Pairing code: 0000. iOS and Android devices supported.
Audio specification	Supported Code: AAC (for iOS) /SBC; Speaker specifications: ϕ 6.1mm, frequency range: 15Hz-22kHz
Power and battery	Rechargeable lithium-polymer battery; music time: up to 6 Hrs (medium level) on a single charge; Bluetooth standby time: up to 6 days ; charging time: ~ 40 minutes. Charging case: add 3 more charge cycle (18Hrs+)
Operating environment	Operating temperature: 0°C~50°C; storage temperature: -30°C to 70°C; IEC60529-IP65 Certified(earbuds)
Voice reminder	English
Certification	BQB Bluetooth 5.0,SRRC,RoHS,REACH,FCC,IC,CE,IP65

Warranty and Services



Fiil guaranteed: One Year Warranty for quality issues

Scan the QR code above with mobile phone to download fiil+ APP(FAQ inside). Enter information to register device. Contact the customer service for any quality issue via fiil+/Facebook/ Twitter service account ('Fiil Headphone') /email customer@fiil.com

Trouble Shooting

Problem	What to do
Earbuds don't turn on	<ul style="list-style-type: none">• Power on the earbuds .• Charge the battery.
Earbuds don't pair with Bluetooth device	<ul style="list-style-type: none">• On your Bluetooth device:<ul style="list-style-type: none">— Turn the Bluetooth feature on and then off.— Delete your Fiil T1 X Earbuds from the Bluetooth list on your device. Pair again.• Move your Bluetooth device closer to the earbuds and away from any interference or obstructions.• Pair a different Bluetooth device.
No sound	<ul style="list-style-type: none">• Power on the earbuds and charge the battery.• Increase the volume on your earbuds and Bluetooth device.• Press the Power/Bluetooth button to hear the connected device. Make sure you are using the correct device.• Move your Bluetooth device closer to the earbuds and away from any interference or obstructions.• Use a different music source.• Pair a different Bluetooth device.• If two Bluetooth devices are connected, pause the first device and play the other device.

Problem	What to do
Poor sound quality	<ul style="list-style-type: none"> • Use a different music source. • Pair a different Bluetooth device. • Disconnect the second device. • Move the Bluetooth device closer to the headphones, and away from any interference or obstructions. • Clear any debris or wax buildup from the earbuds and headphone nozzles.
Earbuds don't charge	<ul style="list-style-type: none"> • Open the USB connector and securely connect the small end of the USB cable to the USB connector. Make sure the connector on the cable is correctly aligned with the connector on the headphones. • Secure both ends of the USB cable. • If your earbuds have been exposed to high or low temperatures, let the earbuds return to room temperature and then try charging again.



FCC and IC COMPLIANCE STATEMENT

This device complies with Part 15 of the FCC Rules and Industry Canada License-exempt RSS standard(s).

Operation is subject to the following two conditions:

1. This device may not cause harmful interference, and
2. This device must accept any interference received, including interference that may cause undesired operation.

This equipment has been tested and found to comply with the limits for a Class B digital device, pursuant to Part 15 of the FCC Rules / with Canadian ICES-003. These limits are designed to provide reasonable protection against harmful interference in a residential installation. This equipment generates, uses, and can radiate radio frequency energy and, if not installed and used in accordance with the instructions, may cause harmful interference to radio communications.

However, there is no guarantee that interference will not occur in a particular installation. If this equipment does cause harmful interference to radio or television reception which can be determined by turning the radio or television off and on, the user is encouraged to try to correct interference by one or more of the following measures:

1. Reorient or relocate the receiving antenna.
2. Increase the separation between the equipment and receiver.
3. Connect the equipment into an outlet on another circuit.
4. Consult the dealer or an experienced radio/TV technician for help.

CAUTION STATEMENT

Any changes or modifications not expressly approved by the party responsible for compliance could void the user's authority to operate the equipment.



Correct disposal of This Product (Waste Electrical & Electronic Equipment)
(Applicable in the European Union and other European countries with separate collection systems)

This marking shown on the product or its literature indicates that it should not be disposed with other household wastes at the end of its working life.

To prevent possible harm to the environment or human health from uncontrolled waste disposal, please separate this from other types of wastes and recycle it responsibly to promote the sustainable reuse of material resources. Household users should contact either the retailer where they purchased this product, or their local government office for details of where and how they can take this item for environmentally safe recycling.

Business users should contact their supplier and check the terms and conditions of the purchase contract.

This product should not be mixed with other commercial wastes for disposal.



CAUTION

Risk of explosion if battery is replaced by an incorrect type.
Dispose of used batteries according to the instructions.



To prevent possible hearing damage, do not listen at high volume levels for long periods.



CE Mark Warning

RF Exposure Information

The device meets the EU requirements (1999/519/EC) on the limitation of exposure of the general public to electromagnetic fields by way of health protection.

Note: The maximum average emitted power of the device is less than 20mW.

售后服务

亲爱的FILL耳机用户：

耳机操作指引或常见问题可参考操作答疑、咨询400热线电话或关注微信公众号“FILL斐耳机”

售后政策

- *七天退货(外包装未拆封不影响二次销售)
 - *十五天无忧换货(产品判定非人为损坏的性能故障)
 - *一年保修(主机判定非人为损坏的性能故障)
- 注:欲了解详细保修政策,请访问

FILL官方中文网站:<http://www.fill.cn/service.php>

退换货步骤

1. 退换货需求请优先联系“FILL斐耳机”公众号在线客服或400 热线电

话: 4008507997进行沟通

2. 退换货请务必填写“退换货登记表”并与产品一同寄回售后部
3. 如需退货需把全套配件及外包装盒一起寄回售后部

售后服务登记表

购买渠道/订单号: _____

购买日期: _____

寄件人姓名: _____

联系电话: _____

寄件地址: _____ 省 _____ 市 _____ 区 _____

商品型号: _____ 退货 ☐ 换货 ☐ 维修 ☐ 颜色: _____ 请以“√”表示

原因: _____

产品序列号: _____

售后支持

尊敬的用户：

您好，为保证您的合法权益，建议您完整阅读本提示卡，以便查验您购买耳机的真伪。

第一种方法：登录fii+斐耳耳机官网<http://www.fii.com>进入首页点击售后服务--选择正品验证、产品注册。

第二种方法：手机用户在各应用商店输入fii+或者手机扫描页面中的二维码下载fii+ APP。打开手机fii+登录微信账号、选择服务、选择正品验证，产品注册。

第三种方法

售后电话：4008507997 查询耳机串号的真伪。本方式不收取任何查询费用，您只需根据通话时长支付国内外运营商的通讯费用。

服务时间：周一至周日 9:30 - 18:30



FiiL 承诺：产品质量问题1年保修

扫描上方二维码，手机下载fii+应用程序，并输入信息，注册设备质量问题可随时通过fii+/微信服务号（fii+斐耳耳机），

或联系售后客服：4008507997

产品中有害物质或元素的名称及含量

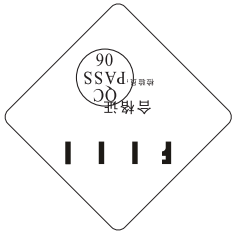
部件名称	有害物质或元素					
	铅 (Pb)	汞 (Hg)	镉 (Cd)	六价铬 (Cr(VI))	多溴联苯 (PBB)	多溴二苯醚 (PBDE)
印刷电路及组件	○	○	○	○	○	○
主体及附件(含包材)	○	○	○	○	○	○
线材及插针	×	○	○	○	○	○

○：表示该有害物质在该部件所有均质材料中的含量均在SJ/T 11363-2006规定的限量要求以下。

×：表示该有害物质至少在该部件的某一均质材料中的含量超SJ/T 11363-2006规定的限量要求；上表中打“×”的部件，由于技术原因目前无法实现替代，后续会逐渐改善。

在中华人民共和国境内销售的电子电气产品上将印有“环保使用期限限制”(EUPF)符号，圆圈中的数字代表产品的正常使用年限。

本表格依据 SJ/T 11364-2006 的规定编制



注：
 本产品符合《GB8898-2011 音频、视频及类似电子设备 安全要求》
 合格证(QC PASS) 表明符合产品质量检测标准，且检验合格，准予出厂

操作答疑

问题描述	解决方案
单耳无声、两耳无声、音质劣化	<p>开关机听语音提示,重新连接手机,更换音源试听。如果蓝牙耳机和电脑相连,由于电脑系统和硬件的复杂性以及驱动不完善,可能需要手动选择音频设备协议,或使用其他设备连接播放。</p>
无法充电,充电不进电、无法开机	<p>首先确保充电盒电量充足,尝试更换充电线或充电器。将耳机放入充电盒,插上电源之后查看耳机是否有指示灯亮,如充电指示正常则打开充电盒5-6s开机,尝试配对连接手机,使用相关功能。</p>
无法切换歌曲,无法调节音量	<p>排除第三方播放器或手机兼容性问题的,使用默认播放或尝试其他手机。</p>
无法找到蓝牙耳机,无法连接手机、蓝牙耳机连接不稳定。	<p>尝试将手机靠近耳机,或确认配对操作方法是否正确,清除手机蓝牙耳机列表并尝试重新配对。并请确认使用环境是否存在射频干扰。</p>
耳机无声、无法连接	<p>请将左右耳机放入充电盒合盖,然后打开充电盒让左右耳机自行配对;或者重置同步(参考第7页)</p>
佩戴耳塞时或轻微按压耳机时听到噼啪声,低音、高音不显著	<p>请更换较小号的耳套以消除佩戴时的异音。 更换较大号的耳套可以加强低频,更换较小号的耳套可以突出高频。</p>

产品参数

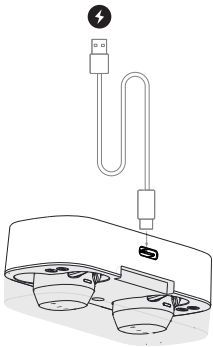
项目		规格
耳机重量(左右)		约4.8克
充电盒重量		约40克
耳机使用模式		蓝牙真无线
蓝牙		版本:5.0, 支持的协议:HSP、HFP、A2DP、AVRCP 传输距离:可达30米; 配码:0000; 支持iOS/安卓设备
音频规范		支持的解码:AAC (用于iOS)/SBC; 喇叭规格:6.1mm高密度钹磁铁全频带单元, 音乐频响应范围:15Hz-22kHz
电源和电池		可充电的锂聚合物电池; 音乐可持续播放长达6小时(中档音量) 待机时间长达6天; 充电时间:约40分钟; 配合充电盒使用, 共可提供额外18小时双耳RWS使用时长
适用环境		工作温度:0℃~50℃; 储存温度:-30℃~70℃; 通过IP65级防尘防水测试(耳机本体)
语音提示		普通话
认证		BQB Bluetooth 5.0,SRRC,RoHS,REACH,FCC,IC,CE,IP65

充电方式及电量指示

● 给充电盒补电

- 当充电盒红色指示灯间隔闪烁3下红灯时,或开合充电盒盖指示灯不亮时,需要给充电盒补电。

● 取出USB线连接充电器和充电盒以充电。



● 电量指示

- 当充电盒指示灯同时亮时,表示充电盒正通过外部USB充电器补电。



- 当充电盒指示灯同时熄灭时,表示充电盒补电完成。

*注:充电盒和耳机同时经由外部USB充电器充电时,充电盒的充电状态将优先指示。

充电方式及电量指示

● 给耳机充电

- 当耳机提示“请充电”或者耳机电量指示灯红灯闪烁时,此时需要给低电量的耳机充电。

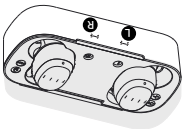


- 请将耳机放入充电盒对应位置,合上充电盒进行充电。此时充电盒对应位置的指示灯亮起,给耳机充电。

注:耳机充电时将断开同步/蓝牙并关机。

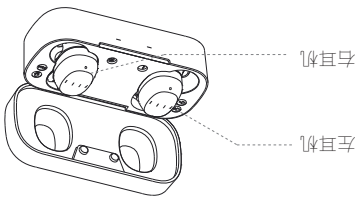
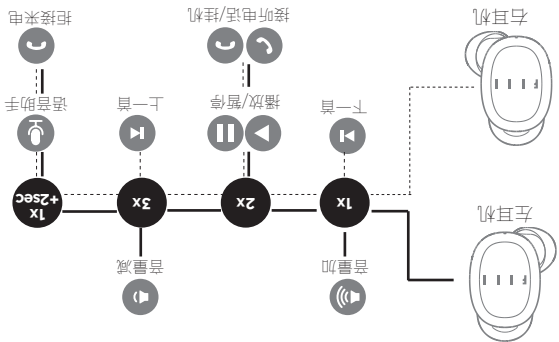
● 电量指示

- 当充电盒对应L、R位置指示灯亮时,表明充电盒正在给对应耳机充电。



- 当充电盒对应L、R位置指示灯熄灭时,表明充电盒内对应耳机充电完成。

操作控制



耳机同步

● 蓝牙同步 (左右耳机)

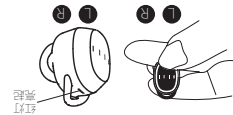
新购买的FIIL T1 X耳机:首次使用时,请参考第5页方式激活,左右耳机将自动完成蓝牙同步。

● 重置同步

如果使用左右同步丢失(单侧耳塞无声),请按照如下步骤手动同步并重新蓝牙连接。

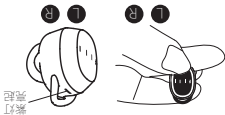
第1步 - 耳机关机

同时长按两边耳机,直至红灯亮起,然后松开手指。



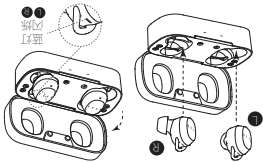
第2步 - 重置同步

再次长按两边耳机,直至紫灯亮起,然后松开手指。



第3步 - 重新蓝牙连接

① 将耳机放回充电盒并合上;
② 删除手机中已连接过的FIIL T1 X 蓝牙记录;
③ 重复蓝牙配对中搜索连接步骤(第6页);
*注:如果出现耳机闪紫灯,请先别连接蓝牙,重复①盖上电池盒等待稍长时间,或者重复“第2步-重置同步”之后,再重新执行“第3步-重新蓝牙连接”。



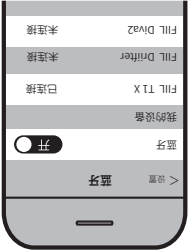
蓝牙配对

● 进入配对

新购买的FIIL T1 X耳机:首次使用,请参考第5页方式,将耳机放入充电盒合盖激活,打开充电盒耳机即自动进入蓝牙配对模式,蓝灯持续闪烁。曾配对过的耳机需要重新配对--关机时长按耳机触控面板直至蓝灯闪烁,或者删除手机中已连接过的FIIL T1X蓝牙记录。

● 搜索连接

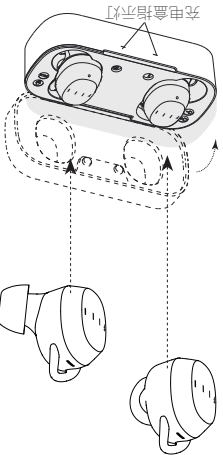
手动连接:进入手机的设置页面,在“蓝牙”选项中点击“搜索设备”,点击连接被搜索到的FIIL T1 X,完成蓝牙配对。
配对过的耳机在打开充电盒后,左右耳塞自动配对同步,耳机自动重连上一次配对的设备。



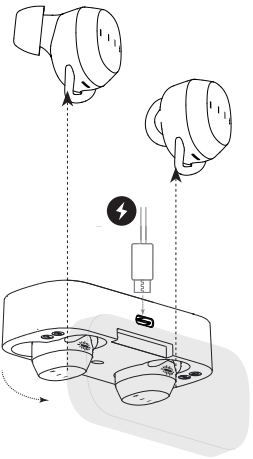
注:由于蓝牙耳机的特性,如果您所处环境存在对蓝牙信号的严重干扰,手机可能会出现搜索蓝牙设备缓慢的情况,请您靠近手机重新搜索或更换信号干扰较小的环境重新尝试。

首次使用

请按照如下步骤，开始激活耳机。



①将耳机都放入充电盒，然后合上；如果充电盒指示灯没有亮起，请连接USB线，至少充电10分钟。



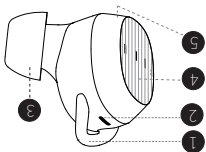
②打开充电盒，左右耳机将自动完成同步，耳机蓝灯闪烁，无需任何手动操作自动进入配对模式，等待手机连接。

*注：请使用USB线预先给充电盒充电

人机界面

●耳机本体

耳机

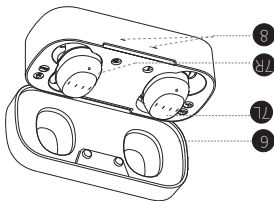


1 耳翼

2 耳机状态指示灯

3 耳塞

●充电盒



6

7L

7R

8

6 充电盒

7L 左耳机

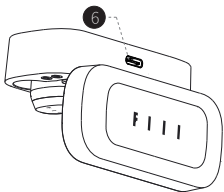
7R 右耳机

4 触控面板

5 麦克风

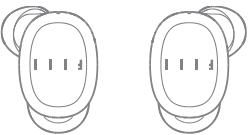
8 充电指示灯

9 Type C 充电口

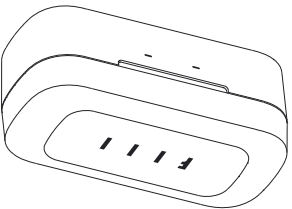


包装内容

耳机 X1 (L/R)



充电盒 X1



耳翼 X3
L/M/S



耳塞 X4
L/M/S/XS



Type C 充电线 X1



规范使用与免责声明

- 本产品专为便携式设备和高保真系统而设计;
- 任何未在使用说明书中指定的使用方法都被认为是对产品的错误使用;
- 对由于不规范或错误使用或其它人为过失而导致的损失, fiii 不承担任何责任。
- FILL T1 X 由峰范(北京)科技有限公司设计, 由峰范(苏州)音频科技有限公司制造。
- * 'fiii' 是峰范(北京)科技有限公司的注册商标®。

重要安全提示

使用前请认真完整的阅读本提示及使用说明书。
请在把产品交给第三方时务必附带本提示及使用说明书。

保护健康和安全

- 请不要使用有明显损伤的产品；
- 请不要长时间大音量听音使用；
- 请不要在驾驶或其它需要注意力集中的活动时使用；
- 请不要让儿童或宠物玩耍本产品或其包装和附件，以免误食；
- 请不要靠近心脏起搏器等易受磁场影响的物品尤其是医疗用品。

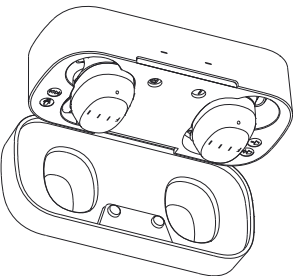
保护产品

- 请在常温下保存本产品，保持干燥，避免长时间暴露在高、低温下或潮湿的环境中；
- 请使用[i]提供的附件/配件；
- 请注意控制接入信号的幅度以免输入端过载损坏；
- 请只用干燥的软布清洁产品。

电池警告！

本产品使用锂聚合物电池，如使用不当可导致火灾或灼伤。请使用正规厂商提供的充电器（电压5V，电流~500mA）或电脑USB口对本产品充电。

F I I T 1 X 真无线运动蓝牙耳机 使用说明书



F I I T 1 X
 蓝牙耳机
 机