

- 操作说明书
- 操作說明書
- User Manual



CYWEE User Manual

CYWEE controller

English

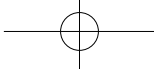
Thank you for your purchase of the **CYWEE** controller. Before use, review the user manual carefully and follow the instructions. "Health Information" contains safety warnings for the user while "Safety information" includes instructions on how to protect the controller from damage. If children are using the controller, read the contents carefully and monitor children during use. In addition, keep this manual in a safe location for future reference.

● Health information	P.28
● Safety information	P.29
● Product description	P.31
● Troubleshooting	P.38
● Terms of responsibility	P.39
● Federal Communication Commission Interference Statement	P.40

Package contents

Make sure the following components are in the package or contact your dealer for assistance.

- **CYWEE** Controller
- **CYWEE** Receiver
- One wrist strap
- Two AA Alkaline Batteries
- One user manual



Health information for users

CYXWEE

Health information

Warning

- Play games in a well-lit indoor room and keep a distance from the LCD or PC screen. Parents should monitor children during play.
- The stimulation of strong light or looking directly at a television or computer screen may cause muscle cramps and/or loss of consciousness in some people. If you are prone to have one of the above symptoms, get medical advice before using the product. If these symptoms occur during use, stop using the product immediately and obtain medical treatment.
- If your hand, wrist, or body is tired while using the product, take a break. If your body continues to feel pain or you feel uncomfortable, stop using the product and obtain medical treatment.
- If dizziness, nausea, fatigue, or other symptoms similar with motion sickness occur, stop using the product. If these symptoms persist, obtain medical treatment as soon as possible.
- Avoid using the product while you are tired, or for an extended period of time to prevent exhaustion.
- We recommend taking a 10~15 minute break every 30 minutes of use especially for those who do not exercise regularly, or people who suffer from heart disease or high blood pressure, or other related diseases.
- The game software is designed to be sensitive to your body's motions, so refrain from overly intense movements while using the **CYXWEE** controller to play games. Users with heart disease, diabetes, hypertension or respiratory disease should follow medical advice to limit the amount of physical exertion. Users who are pregnant or potentially pregnant should ask for medical advice before using this product.

Usage information

Warning

- During game play, grip the **CYXWEE** controller tightly, do not throw it around or wave it dangerously in order to avoid causing injuries to other people or damage to surrounding objects.
- Make sure all players tighten the wrist strap on their wrists. If the **CYXWEE** controller wrist strap is not tightened, it may fall off your wrist and cause damages.
- Before game play, make sure there are no other people or any objects within arms length, and make sure the distance between the **CYXWEE** controller and the computer or the TV is more than two meters. In addition, if there is more than one player playing the game, make sure there is sufficient space to avoid unintended collisions and accidents.



Safety information

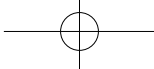
Information about the **CYWEE** controller and Wrist Strap

Warning

- Use the **CYWEE** authorized wrist strap; do not use any other wrist strap. If you use another wrist strap, the wrist strap may fall off and result in a broken or loose wrist strap, or even cause damages or injuries.
- If your hand is wet or sweaty, do not use the **CYWEE** controller. Dry your hands before using this device. Using it when your hands are wet may cause it to slip from your hand and cause damages or injuries.
- Do not swing or wave the **CYWEE** controller when only holding the wrist strap; doing so could cause the wrist strap to break and result in damages or injuries.
- Before using the **CYWEE** controller, make sure the wrist strap is not damaged. If the wrist strap is damaged, stop using this device and replace the wrist strap.
- When replacing the batteries, put the battery cover back on. Do not use the product without the battery cover or you may cause damages or injuries.
- If there is unusual sound, smell, or smoke originating from the controller, immediately remove the batteries and send the product to the maintenance center for inspection. Continuous usage may cause a short circuit or product malfunction.
- Do not use the **CYWEE** controller if any liquid has been spilled on it. Do not use a damp or cleaning solvent to clean the **CYWEE** controller, just send it to the maintenance center. Continuous usage may cause a short circuit or product malfunction.
- Do not use a damaged **CYWEE** controller; continuously using the product may cause electric shocks, injuries or product malfunction.
- Do not attempt to repair or make any adjustments to the **CYWEE** controller without any **CYWEE** authorization.
- Do not touch the battery connector with your fingers or other metals, to avoid electric shock, injuries or product malfunction.
- Do not use the product in locations with high volumes of wireless frequencies (e.g., hospitals or public agencies) to avoid interference with the radio waves of the **CYWEE** controller.
- Users with a pacemaker should maintain a distance of at least 22 cm between the product and the pacemaker to avoid the pacemaker radio waves from affecting the functions of the **CYWEE** controller.

Caution

- Do not place the product on the floor to avoid damages and injuries..
- Place the product in a location that is out of reach to children.
- The **CYWEE** controller is made of plastic and metal components. Regular disposal of the **CYWEE** controller may be extremely hazardous; dispose of it in accordance with your local government regulations.

**CYXWEE**

Guidelines

- Do not use or keep the product in a location with high humidity, dust or fumes.
- Do not directly expose the product to the sun, or locations that have abnormally high temperatures (e.g., near a stove or a heater).
- Wipe the **CYXWEE** controller with a clean, soft cloth. To avoid surface damage, do not use a cleanser, thinner, or alcohol to wipe the product.

Relevant usage information about batteries

Danger

- If any battery leakage occurs, thoroughly wash the affected surfaces with a large amount of water and immediately obtain medical treatment.
- Do not dispose of batteries in a fire.
- Do not use deformed or non-assigned batteries.
- Do not use metal to short the positive (+) and negative (-) ends.
- Do not put the batteries in backwards. Make sure that the positive (+) and negative (-) ends are in their correct positions.

Warning

- Do not mix used and new batteries, and do not mix different brands of batteries.
- Do not recharge alkaline or non-rechargeable batteries.
- Do not leave batteries in the controller for long periods of non-use.
- Do not use damaged, deformed or leaking batteries.
- If battery leakage occurs in the **CYXWEE** controller, stop usage immediately and send it to the **CYXWEE** maintenance center for inspection.

Warning

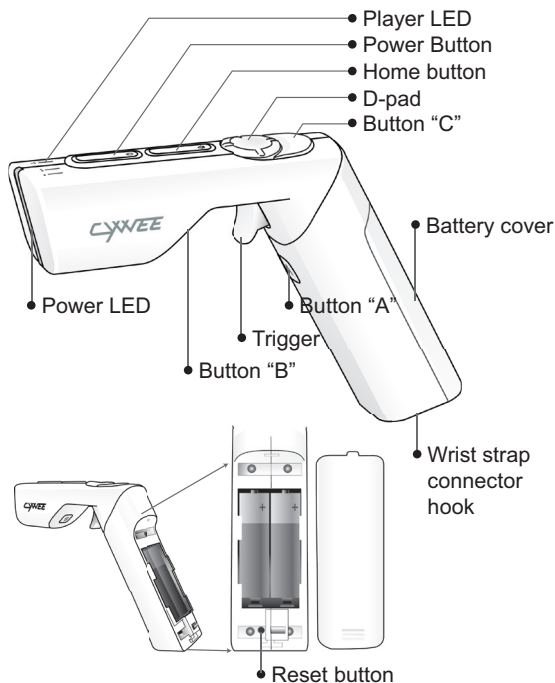
- **CYXWEE** controller uses AA batteries or AA rechargeable nickel metal hydride (NiMH) batteries. If you use rechargeable nickel metal hydride (NiMH) batteries, be sure to follow the manufacturer's guidelines for safe and proper usage.
- Do not use batteries in locations where the temperature rapidly changes.
- When disposing of the batteries, follow the regulations of your local government.



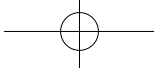
Product description

1. *CYXEE* controller

English

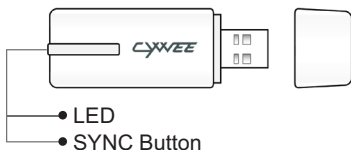


- Power LED
Shows the status of the *CYXEE* controller. Orange LED is lit when the controller is on.
- Player LED
Indicate which player the controller is set up for.
- Power Button
Press once to turn the power on, and hold for three seconds to turn the power off.



2. *CYXWEE* Receiver

CYXWEE



3. Installing Batteries in the *CYXWEE* controller

3-1

The *CYXWEE* controller uses two AA batteries. *CYXWEE* recommends high quality alkaline batteries for best performance and longevity of battery life. If you use rechargeable nickel metal hydride (NiMH) batteries, be sure to follow the manufacturer's guidelines for safety and proper usage.

3-2

Remove the battery cover and put in two AA alkaline batteries in accordance with the image shown below. Be sure to insert the negative (-) end first when inserting new batteries, and remove the plus (+) end first when replacing the batteries.

3-3

Replace the battery cover, ensure that it slides closed with a "click".

4. Wrist strap installation

4-1

Insert the thin cord of the wrist strap through the wrist strap connector hook, and loop the wrist strap through the thin cord circle and pull the wrist strap out gently.

4-2

Make sure you use a *CYXWEE* authorized wrist strap, do not use any other wrist strap.





5. Synchronizing the *CYXEE* receiver with the computer

5-1

Follow these steps when synchronizing the *CYXEE* receiver to the computer for the first time:

5-1-1 Make sure the computer power is on.

5-1-2 Press the power button on the *CYXEE* controller. Player LEDs 1 to 4 will flash once, in order, then the power LED of the *CYXEE* controller will turn orange, which indicates that the power is on.

5-1-3 Remove the cap of the *CYXEE* receiver, insert it in the USB port and press the SYNC button once. At this time, the *CYXEE* receiver LED will flash for 6-8 seconds before a connection is made. Press any button on the *CYXEE* controller to complete synchronization.

5-1-4 After a successful connection, the *CYXEE* receiver LED and the player LED will remain lit.



5-2

If you do not have a successful connection, press the *CYXEE* receiver button again and repeat steps 5-1-3 to 5-1-4.

5-3

After the *CYXEE* controller and the *CYXEE* receiver are synchronized once, there is no need to repeat the process.

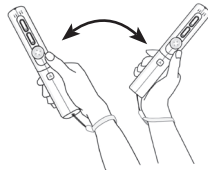
6. *CYXEE* controller basic operation

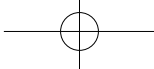
6-1

Power: Press the power button on the *CYXEE* controller once to turn the product on, and hold the power button for three seconds to turn it off. When the *CYXEE* controller becomes idle for 90 seconds, it will enter standby/energy-save mode. Once the *CYXEE* controller detects motion, power will be restored. If the *CYXEE* controller is low on power, the player LED will blink to remind you to change the batteries.

6-2

Wave: Wave the *CYXEE* controller up and down, and from side to side.

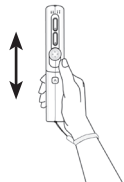




CYXWEE

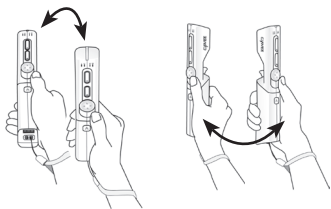
6-3

Pushing or Pulling: Move the controller forward or backward, toward and away from the screen.



6-4

Twist: Move the controller in a twisting motion by rotating your arm.



- User information about the **CYXWEE** controller
- Facing the computer screen, maintain a distance of 1~5 meters between the receiver and the tip of the **CYXWEE** controller.
- Make sure there are no people or objects at arms length between the **CYXWEE** controller and the **CYXWEE** receiver.
- If there is any equipment that may interfere with the radio frequency in the surrounding area of the **CYXWEE** controller and the **CYXWEE** receiver, keep a distance from that area or stop using the other wireless devices.
- Space confirmation
To use the **CYXWEE** controller safely, make sure there is ample game playing space while playing games.
- Ensure that there are no people or objects in the surrounding area to ensure full game playing space.
- Ensure that when you are waving the remote, there are no other objects at arms length.
- If more than two people are playing the game, make sure there is ample game space between each player to prevent collision.
- Stay at least two meters away from the TV or computer screen to avoid damaging the TV or the computer with the **CYXWEE** controller.

Warning!

Make sure there is ample game playing space at all times during game play!



7. Holding method and various modes of the *CYWEE* controller

7-1

The *CYWEE* controller can be held in either the gun or straight mode, switching between the two modes as follows:

- 7-1-1 To switch from gun mode to straight mode hold both ends of the *CYWEE* controller with both hands, with *CYWEE* logo in the left hand:



- 7-1-2 Turn the right hand wrist clockwise

- 7-1-3 Once completely turned, the remote should look like this:

- 7-1-4 To switch from straight mode to gun mode, turn the right end counterclockwise to reverse the turning direction, and repeat the above-mentioned steps.

7-2

3D Mouse mode

- This mode can be used in both straight and gun mode. The 3D mouse mode can be enabled and disabled by pressing Home and Button B simultaneously to switch between the browsing and non-browsing mouse modes.

- 7-2-1 In the browsing mode, move the mouse cursor will move up and down, left and right by moving your wrist in the intended direction. In this mode, if the mouse cursor goes beyond the borders of the screen, press Button A to freeze the mouse cursor and move the *CYWEE* controller position to reposition the cursor on screen.

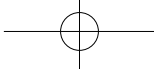
- 7-2-2 In the non-browsing mode, the mouse cursor will move up and down, left and right. Button A must be held down to move the mouse, when Button A is released, the mouse cursor will freeze again.

- 7-2-3 Pressing the trigger of the *CYWEE* controller is similar to using the left click of a computer mouse.

- 7-2-4 Pressing Button C on the *CYWEE* controller is similar to using the right click of a computer mouse.

Caution !

The default mode of the *CYWEE* controller is the browsing mode. In browsing mode, if the cursor goes beyond the borders of the screen, use Button A to move the cursor to the edge of the screen for recenter and then move it to the position you want.



CYWEE

7-3

Gun mode

- This mode requires putting the **CYWEE** controller into gun mode and holding it with one hand.
- The following operation is for basic reference only; for details and operating methods, see the game manuals.



7-4

Sports mode

- In sports mode, the **CYWEE** controller should be in straight mode.
- The following operation is for basic reference only; for details and operating methods, refer to the individual game manuals.

7-4-1 Front swing



7-4-2 Back swing



7-4-3 Serve



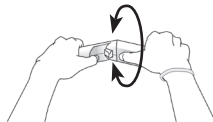
7-5

Aviation mode

- This mode requires putting the **CYWEE** controller into gun mode, and holding it with the hinge forward with the **CYWEE** logo in your left hand.
- The following operation is for basic reference only; for details and operating methods, refer to the individual game manuals.

7-5-1 To fly high, move the hinge of the **CYWEE** controller up.

7-5-2 To fly low, move the hinge of the **CYWEE** controller down.





7-5-3 To fly left, tilt the **CYWEE** controller to the left.



7-5-4 To fly right, tilt the **CYWEE** controller to the right.



7-6

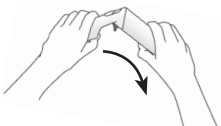
Racing mode

- This mode requires putting the **CYWEE** controller into gun mode and holding it with the hinge pointing up with the **CYWEE** logo in your left hand.
- The following operation is for basic reference only; for details and operating methods, refer to the game manuals.

7-6-1 Turn left



7-6-2 Turn right



Caution!

During game play, make sure you use the wrist strap and maintain a secure grip on the **CYWEE** controller. The **CYWEE** manufacturer is not responsible for any inappropriate usage of the **CYWEE** controller.

Caution!

- The **CYWEE** controller must be synchronized with the **CYWEE** receiver for usage. A successful synchronization will keep the **CYWEE** receiver LED and the **CYWEE** controller LED on.
- If the first connection fails, refer to section 5-2 and follow the steps again.



Troubleshooting



If any of the following situations occur while using the **CYWEE** controller, refer to the following Q&A list for help:

Situation 1: **CYWEE** controller cannot be used. Why?

- Is the **CYWEE** controller power on?

Make sure the **CYWEE** controller power is on. If so, make sure the batteries are correctly positioned in the **CYWEE** controller.

- Is the **CYWEE** controller in standby mode?

If the **CYWEE** controller has not been used for 90 seconds, it will enter standby mode. Just move the **CYWEE** controller to re-activate it.

- Is the **CYWEE** receiver plugged in?

Make sure the **CYWEE** receiver is plugged-in correctly and the LED is always on.

- Is there any interference with the position of the **CYWEE** receiver?

Remove any obstacles in front of the **CYWEE** receiver and make sure you can clearly see the front of the **CYWEE** receiver.

- Is the distance between the **CYWEE** controller and the **CYWEE** receiver too close or too far?

Keep a distance between the **CYWEE** controller and the **CYWEE** receiver of 1~5 meters.

Situation 2: Even after motions, there is no response from **CYWEE** controller, why?

- Is it the mode correct?

Follow the game instructions to ensure you are using the correct mode.

Situation 3: **CYWEE** receiver LED is not on

- Is the power on?

Make sure the computer power and the **CYWEE** controller power are both on.

- Is the distance too far?

If the **CYWEE** controller is too far away, the **CYWEE** receiver cannot sense it. Maintain a distance between the **CYWEE** controller and the receiver of 1~5 meters.

- Has the synchronization of the **CYWEE** controller failed?

Refer to section 5-2 for synchronization information.

Situation 4: **CYWEE** controller cursor control is not stable

- Does the LED continue to flash?

If it does, that means that the **CYWEE** controller is too far away. The **CYWEE** receiver will not be able to sense it; so maintain a distance between the controller and the receiver of 1~5 meters.

If it does not, remove the battery cover and press the reset button to allow the **CYWEE** controller to return to the default setting.

If any of the above solutions do not correct your problem or you have a question, please visit our website, www.cywee.com, for supplemental and/or updated information about our product.

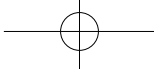


Terms of responsibility

In addition to the relevant laws and regulations, the following situations are not included in the warranty scope or liability of the company:

1. Product damage that has resulted from inappropriate product usage.
2. Product damage that has resulted from product repair without written authorization of the company.
3. User-inflicted product damage.
4. Product damage that has resulted from using the product in an abnormal environment.
5. Product damage caused by natural disasters.
6. Products without **CYXEE**-issued serial numbers.
7. Damage caused by using software or an object not provided by the company.
8. Samples, testers, non-mass production products and software.
9. Products under an expired warranty.

The liabilities of the company only include direct and actual damage. It does not include indirect, incidental or special damage (such as expected profit loss and moral damage compensation) and punitive damages. In addition to other regulations, the liabilities of the company to users will require the company, at most, to replace the **CYXEE** controller with the latest model.



Federal Communication Commission Interference Statement

This equipment has been tested and found to comply with the limits for a Class B digital device, pursuant to Part 15 of the FCC Rules. These limits are designed to provide reasonable protection against harmful interference in a residential installation. This equipment generates, uses and can radiate radio frequency energy and, if not installed and used in accordance with the instructions, may cause harmful interference to radio communications. However, there is no guarantee that interference will not occur in a particular installation. If this equipment does cause harmful interference to radio or television reception, which can be determined by turning the equipment off and on, the user is encouraged to try to correct the interference by one of the following measures:

- Reorient or relocate the receiving antenna.
- Increase the separation between the equipment and receiver.
- Connect the equipment into an outlet on a circuit different from that to which the receiver is connected.
- Consult the dealer or an experienced radio/TV technician for help.

FCC Caution: Any changes or modifications not expressly approved by the party responsible for compliance could void the user's authority to operate this equipment.

This device complies with Part 15 of the FCC Rules.

Operation is subject to the following two conditions: (1) This device may not cause harmful interference, and (2) this device must accept any interference received, including interference that may cause undesired operation.

This device and its antenna(s) must not be co-located or operating in conjunction with any other antenna or transmitter.

Country Code selection feature to be disabled for products marketed to the US/CANADA

This Class [B] digital apparatus complies with Canadian ICES-003.

Cet appareil numérique de la classe [B] est conforme à la norme NMB-003 du Canada.

FCC ID: WZS-CWCL01KP-C / WZS-CWCL01KP-D
IC ID: 8103A- CWCL01KP-C / 8103A- CWCL01KP-D
CMII ID: 2008DJ4905 / 2008DJ4906
MODEL: CW-CL01KP-C / CW-CL01KP-D
INPUT: AA*2 2.2-3.2V



CCAF09LP0060T7
CCAF09LP0070T0