

# AZ2100

## MINIATURE POWER RELAY

### FEATURES

- Versatility of both PC and "Trace-Saver" quick-connect terminals on contacts
- 30 Amp switching capability for both N.O. and N.C. contacts
- 1 Form A, B and C contacts available
- DC coils to 120 VDC
- Life expectancy to 10 million operations
- Class B insulation for high temperature applications
- Class F (155°C) versions available
- Available with an epoxy seal for automatic wave soldering and immersion cleaning
- UL, CUR file E44211 including versions meeting UL 508 and UL 873 spacing and contact rating requirements

### CONTACTS

<b>Arrangement</b>	SPDT (1 Form C) SPST (1 Form A and 1 Form B)
<b>Ratings</b>	Resistive load: Max. switched power: 900 W or 7200 VA Max. switched current: 30 A  Max. switched voltage: 30 VDC or 300 VAC <b>UL Rating:</b> See chart for UL contact ratings. AZ2100 Series meets UL 508 Group A spacing requirements. AZ2101 Series meets UL 508 Group B spacing requirements.
<b>Material</b>	Silver cadmium oxide
<b>Resistance</b>	< 20 milliohms initially (at rated current, voltage drop method)

### COIL

<b>Power At Pickup Voltage (typical)</b>	500 mW
<b>Max. Continuous Dissipation</b>	2.2 W at 20°C (68°F) ambient 1.8 W at 40°C (104°F) ambient
<b>Temperature Rise</b>	38°C (68°F) at nominal coil voltage
<b>Temperature</b>	Max. 130°C (266°F) Class B Max. 155°C (311°F) Class F



### GENERAL DATA

<b>Life Expectancy</b> <b>Mechanical</b> <b>Electrical</b>	Minimum operations 1 x 10 <sup>7</sup> 1 x 10 <sup>5</sup> at 30 A 120 VAC Res. (N.O.)
<b>Operate Time (max.)</b>	Max. 12 ms Typical: 8 ms
<b>Release Time (max.)</b>	Max. 5 ms Typical: 3.5 ms
<b>Dielectric Strength (at sea level for 1 min.)</b>	Group A: 2500 Vrms contact to coil Group B: 2000 Vrms contact to coil 1500 Vrms between open contacts
<b>Insulation Resistance</b>	100 megohms min. at 500 VDC, 20°C, 50% RH
<b>Dropout</b>	Greater than 10% of nominal coil voltage
<b>Ambient Temperature</b> <b>Operating</b>  <b>Storage</b>	-55°C (-67°F) to 100°C (212°F) Class B -55°C (-67°F) to 125°C (257°F) Class F -55°C (-67°F) to 130°C (266°F) Class B -55°C (-67°F) to 155°C (311°F) Class F
<b>Vibration</b>	0.062" DA at 10–55 Hz
<b>Shock</b>	20 g
<b>Enclosure</b>	P.B.T. polyester
<b>Terminals</b>	Tinned copper alloy, P.C. with quick-connect tabs, .250" wide, on top
<b>Max. Solder Temp.</b>	270°C (518°F)
<b>Max. Solder Time</b>	5 seconds
<b>Max. Solvent Temp.</b>	80°C (176°F)
<b>Max. Immersion Time</b>	30 seconds
<b>Weight</b>	43 grams

### NOTES

1. All values at 20°C (68°F).
2. Relay may pull in with less than "Must Operate" value.
3. Unsealed relays should not be dip cleaned.
4. Other coil resistances and sensitivities available upon request.
5. Specifications subject to change without notice.



# AMERICAN ZETTLER, INC.

[www.azettler.com](http://www.azettler.com)

75 COLUMBIA • ALISO VIEJO, CA 92656 • PHONE: (949) 831-5000 • FAX: (949) 831-8642 • E-MAIL: SALES@AZETTLER.COM

1/17/01W

# AZ2100

## RELAY ORDERING DATA: UL 508 Group A; UL 873 Version

STANDARD RELAYS: 1 Form A (SPST N.O.)					
COIL SPECIFICATIONS				ORDER NUMBER*	
Nominal Coil VDC	Max. Continuous VDC	Coil Resistance $\pm 10\%$	Must Operate VDC	Unsealed	Sealed
5	7.3	27	3.75	AZ2100-1A-5D	AZ2100-1A-5DE
6	8.9	40	4.5	AZ2100-1A-6D	AZ2100-1A-6DE
9	13.9	97	6.75	AZ2100-1A-9D	AZ2100-1A-9DE
12	17.5	155	9.0	AZ2100-1A-12D	AZ2100-1A-12DE
15	22.5	256	11.25	AZ2100-1A-15D	AZ2100-1A-15DE
18	27.4	380	13.5	AZ2100-1A-18D	AZ2100-1A-18DE
24	36.1	660	18.0	AZ2100-1A-24D	AZ2100-1A-24DE
48	68.4	2,560	36.0	AZ2100-1A-48D	AZ2100-1A-48DE
70	104.4	5,500	52.5	AZ2100-1A-70D	AZ2100-1A-70DE
110	163.2	13,450	82.5	AZ2100-1A-110D	AZ2100-1A-110DE

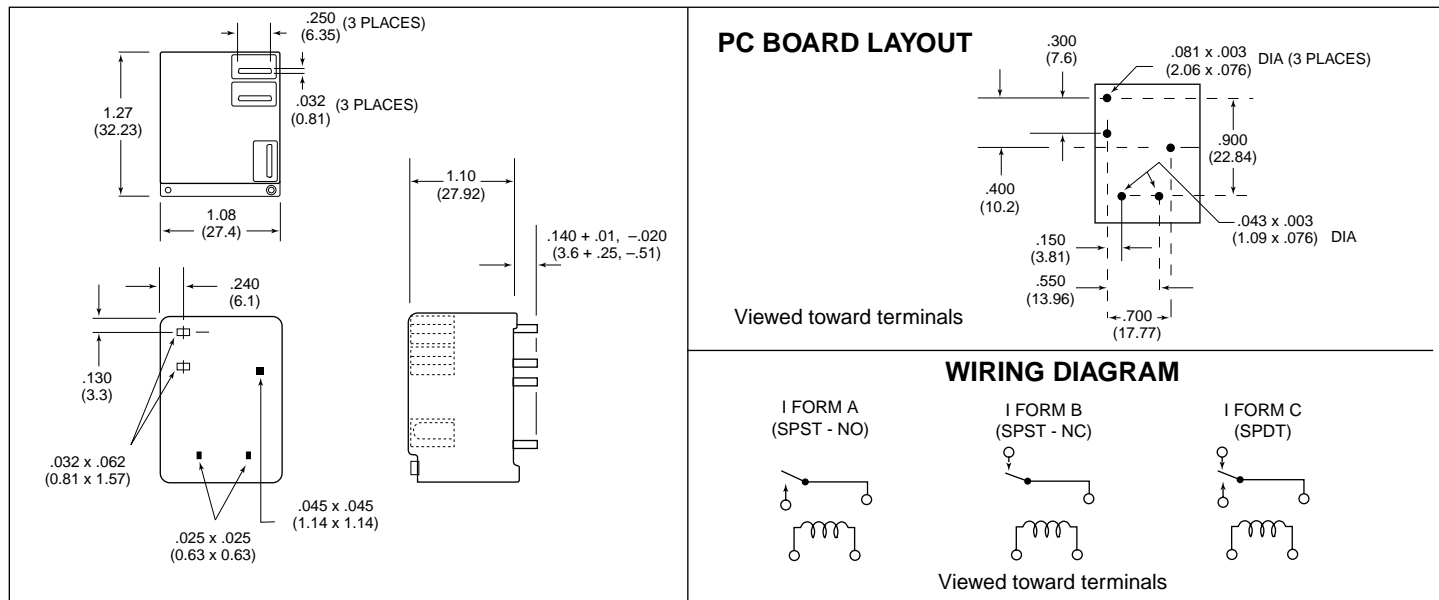
  

STANDARD RELAYS: 1 Form C (SPDT)					
COIL SPECIFICATIONS				ORDER NUMBER*	
Nominal Coil VDC	Max. Continuous VDC	Coil Resistance $\pm 10\%$	Must Operate VDC	Unsealed	Sealed
5	7.3	27	3.75	AZ2100-1C-5D	AZ2100-1C-5DE
6	8.9	40	4.5	AZ2100-1C-6D	AZ2100-1C-6DE
9	13.9	97	6.75	AZ2100-1C-9D	AZ2100-1C-9DE
12	17.5	155	9.0	AZ2100-1C-12D	AZ2100-1C-12DE
15	22.5	256	11.25	AZ2100-1C-15D	AZ2100-1C-15DE
18	27.4	380	13.5	AZ2100-1C-18D	AZ2100-1C-18DE
24	36.1	660	18.0	AZ2100-1C-24D	AZ2100-1C-24DE
48	68.4	2,560	36.0	AZ2100-1C-48D	AZ2100-1C-48DE
70	104.4	5,500	52.5	AZ2100-1C-70D	AZ2100-1C-70DE
110	163.2	13,450	82.5	AZ2100-1C-110D	AZ2100-1C-110DE

\*Substitute "1B" in place of "1A or 1C" to indicate 1 Form B. To indicate Class F version, add suffix "F".

Other coil resistances and sensitivities available upon request. Please contact the factory.

## MECHANICAL DATA



Dimensions in inches with metric equivalents in parentheses. Tolerance:  $\pm .010$ "



# AMERICAN ZETTLER, INC.

[www.azettler.com](http://www.azettler.com)

75 COLUMBIA • ALISO VIEJO, CA 92656 • PHONE: (949) 831-5000 • FAX: (949) 831-8642 • E-MAIL: SALES@AZETTLER.COM

1/17/01W

# AZ2100

## RELAY ORDERING DATA: UL 508 Group B

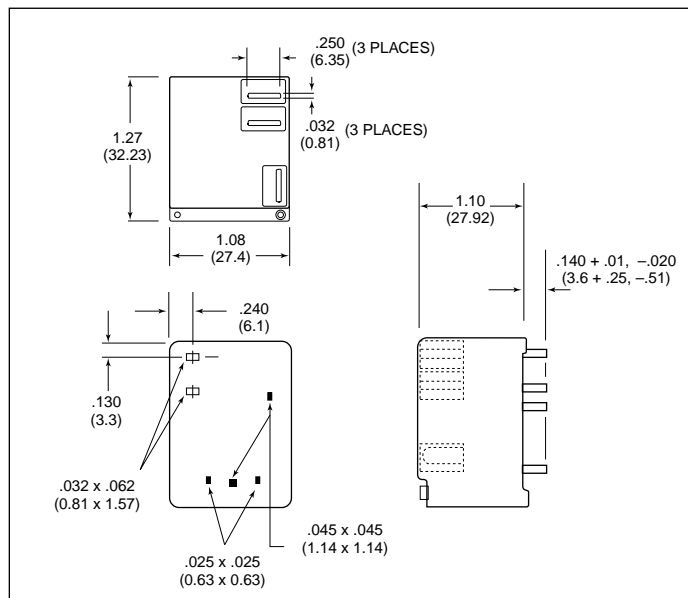
STANDARD RELAYS: 1 Form A (SPST N.O.)					
COIL SPECIFICATIONS				ORDER NUMBER*	
Nominal Coil VDC	Max. Continuous VDC	Coil Resistance $\pm 10\%$	Must Operate VDC	Unsealed	Sealed
5	7.3	27	3.75	AZ2101-1A-5D	AZ2101-1A-5DE
6	8.9	40	4.5	AZ2101-1A-6D	AZ2101-1A-6DE
9	13.9	97	6.75	AZ2101-1A-9D	AZ2101-1A-9DE
12	17.5	155	9.0	AZ2101-1A-12D	AZ2101-1A-12DE
15	22.5	256	11.25	AZ2101-1A-15D	AZ2101-1A-15DE
18	27.4	380	13.5	AZ2101-1A-18D	AZ2101-1A-18DE
24	36.1	660	18.0	AZ2101-1A-24D	AZ2101-1A-24DE
48	68.4	2,560	36.0	AZ2101-1A-48D	AZ2101-1A-48DE
70	104.4	5,500	52.5	AZ2101-1A-70D	AZ2101-1A-70DE
110	163.2	13,450	82.5	AZ2101-1A-110D	AZ2101-1A-110DE

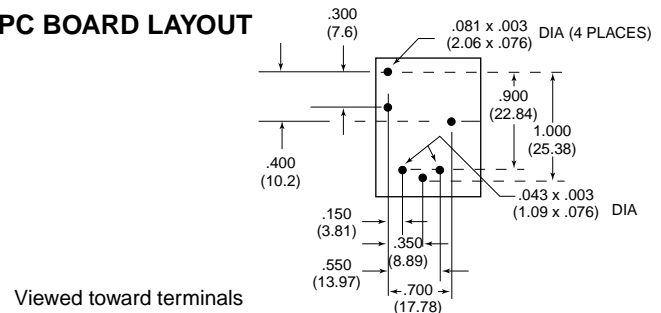
STANDARD RELAYS: 1 Form C (SPDT)					
COIL SPECIFICATIONS				ORDER NUMBER*	
Nominal Coil VDC	Max. Continuous VDC	Coil Resistance $\pm 10\%$	Must Operate VDC	Unsealed	Sealed
5	7.3	27	3.75	AZ2101-1C-5D	AZ2101-1C-5DE
6	8.9	40	4.5	AZ2101-1C-6D	AZ2101-1C-6DE
9	13.9	97	6.75	AZ2101-1C-9D	AZ2101-1C-9DE
12	17.5	155	9.0	AZ2101-1C-12D	AZ2101-1C-12DE
15	22.5	256	11.25	AZ2101-1C-15D	AZ2101-1C-15DE
18	27.4	380	13.5	AZ2101-1C-18D	AZ2101-1C-18DE
24	36.1	660	18.0	AZ2101-1C-24D	AZ2101-1C-24DE
48	68.4	2,560	36.0	AZ2101-1C-48D	AZ2101-1C-48DE
70	104.4	5,500	52.5	AZ2101-1C-70D	AZ2101-1C-70DE
110	163.2	13,450	82.5	AZ2101-1C-110D	AZ2101-1C-110DE

\*Substitute "1B" in place of "1A or 1C" to indicate 1 Form B. To indicate Class F version, add suffix "F".  
Other coil resistances and sensitivities available upon request. Please contact the factory.

## MECHANICAL DATA



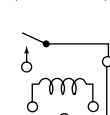
## PC BOARD LAYOUT



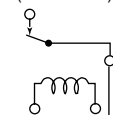
Viewed toward terminals

## WIRING DIAGRAM

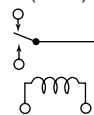
1 FORM A  
(SPST - NO)



1 FORM B  
(SPST - NC)



1 FORM C  
(SPDT)



Viewed toward terminals

Dimensions in inches with metric equivalents in parentheses. Tolerance:  $\pm .010$ "



**AMERICAN ZETTLER, INC.**

[www.azettler.com](http://www.azettler.com)

75 COLUMBIA • ALISO VIEJO, CA 92656 • PHONE: (949) 831-5000 • FAX: (949) 831-8642 • E-MAIL: SALES@AZETTLER.COM

1/17/01W

# AZ2100

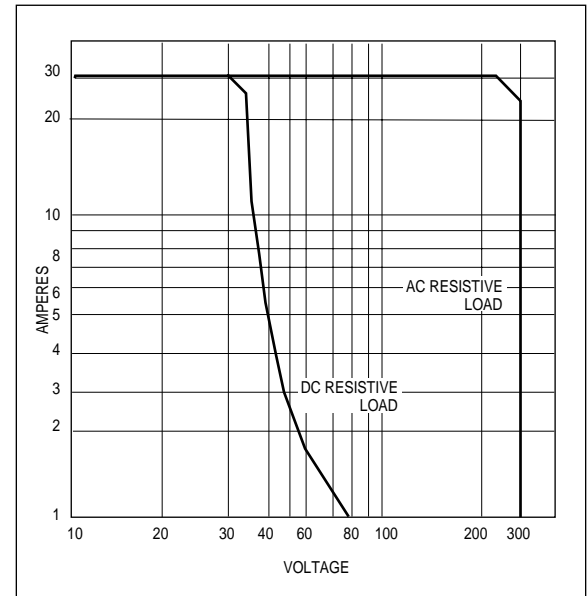
## UL/CUR File E44211 Approved Contact Ratings

Load Type	Cycles	Volts	Form A (NO)	Form B (NC)	Form C	
					NO	NC
General Purpose (Inductive)	100,000	125 or 240 VAC	30 A	15 A	—	15 A
	30,000	277 VAC	30 A	30 A	30 A	30 A
Resistive	100,000	125 or 240 VAC	30 A	15 A	—	—
	100,000	30 VDC	20 A	10 A	20 A	10 A
	100,000	277 VAC	20 A	—	—	—
	100,000 *	240 VAC	15 A	—	—	—
Ballast	6,000	125, 240 or 277 VAC	6 A	3 A	6 A	3 A
Pilot Duty	30,000	125 VAC	800 VA	275 VA	470 VA	275 VA
	30,000	240 VAC	690 VA	275 VA	470 VA	275 VA
	100,000	125 or 277 VAC	690 VA	—	690 VA	—
Motor Load	6,000	125 VAC	1 HP	1/4 HP	1 HP	1/4 HP
	6,000	240 VAC	2 HP	1 HP	2 HP	1 HP
	30,000	125 VAC	1 HP	—	1 HP	—
	100,000	125 or 277 VAC	3/4 HP	—	3/4 HP	—
Definite Purpose  (LRA-Locked Rotor)  (FLA-Full Load)	30,000 **	120 VAC	82.8 LRA 13.8 FLA	—	82.8 LRA 13.8 FLA	—
	30,000	125 VAC	96 LRA 30 FLA	33 LRA 10 FLA	60 LRA 20 FLA	33 LRA 10 FLA
	30,000 **	125 VAC	60 LRA 20 FLA	30 LRA 12 FLA	60 LRA 20 FLA	30 LRA 12 FLA
	100,000	125 VAC	82.8 LRA 27 FLA	—	82.8 LRA 27 FLA	—
	30,000	240 VAC	80 LRA 30 FLA	33 LRA 10 FLA	60 LRA 20 FLA	33 LRA 10 FLA
	30,000 **	240 VAC	41.4 LRA 6.9 FLA	—	41.4 LRA 6.9 FLA	—
	100,000	277 VAC	60 LRA 20 FLA	—	60 LRA 20 FLA	—
	100,000	277 VAC	60 LRA 20 FLA	—	60 LRA 20 FLA	—
Tungsten	6,000	125 VAC	15A	—	15A	3A
	6,000	240 VAC	5A	—	5A	3A
	6,000	120 VAC	—	3A	—	—
	6,000	240 VAC	—	3A	—	—
TV-5	25,000	120 VAC	TV-5	—	TV-5	TV-3
TV-3	25,000	120 VAC	—	TV-3	—	TV-3

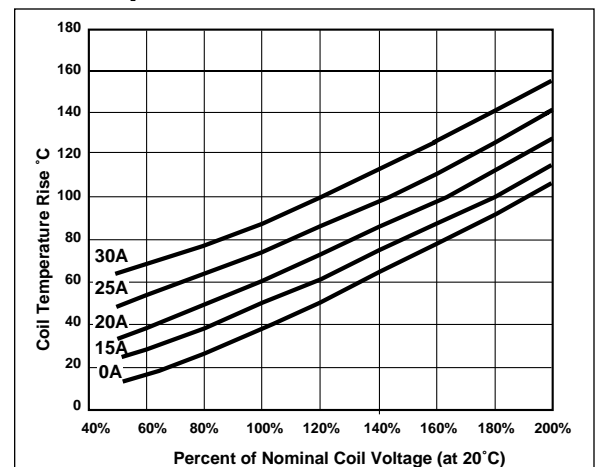
\* Ambient temperature 96°C (208°F) max. sealed and 105°C (221°F) unsealed.

\*\* Ambient temperature 85°C (185°F) max. sealed and unsealed.

## Maximum Switching Capacity



## Coil Temperature Rise



**AMERICAN ZETTLER, INC.**

[www.azettler.com](http://www.azettler.com)

75 COLUMBIA • ALISO VIEJO, CA 92656 • PHONE: (949) 831-5000 • FAX: (949) 831-8642 • E-MAIL: SALES@AZETTLER.COM

1/17/01W