

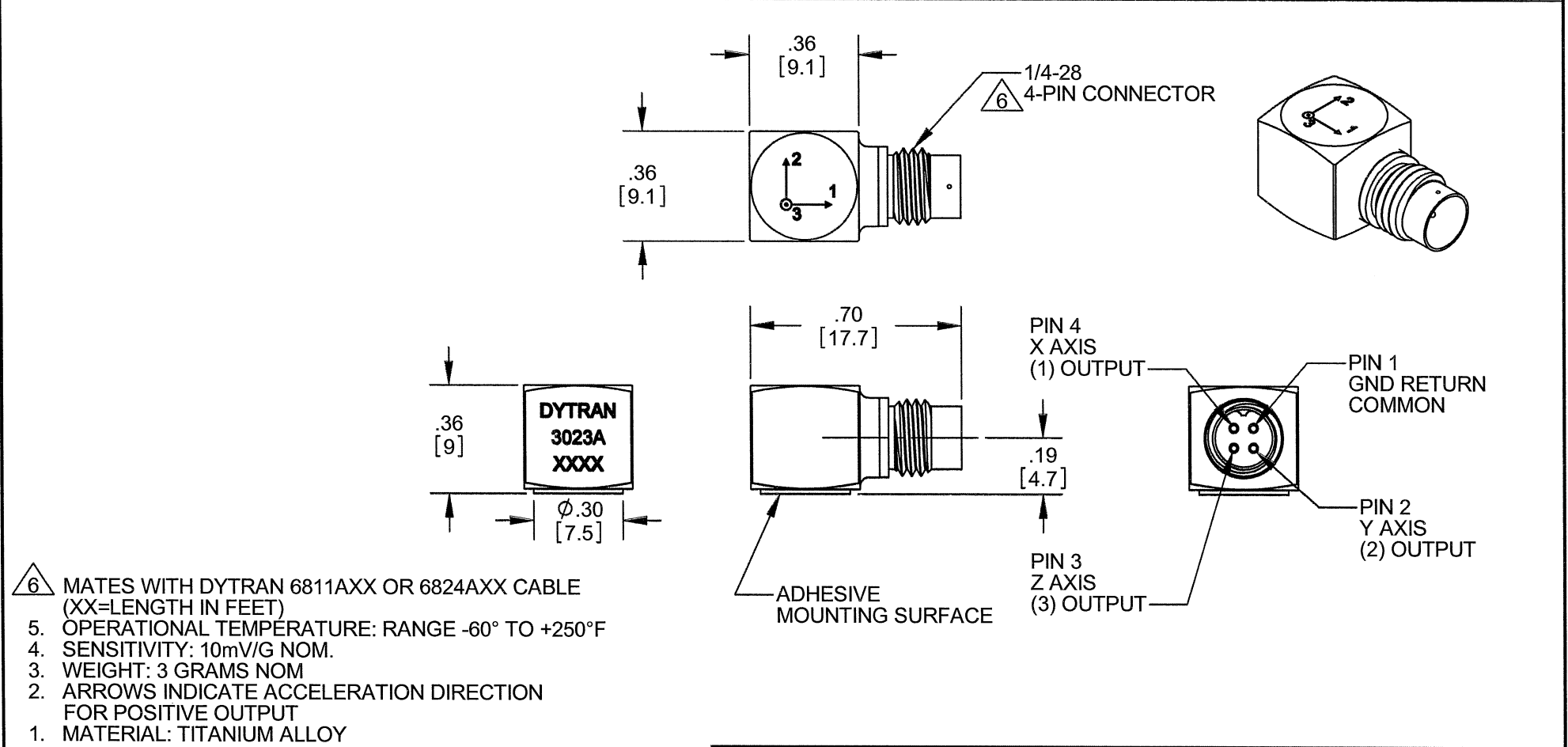


PROPRIETARY AND CONFIDENTIAL	REVISIONS					
THE INFORMATION CONTAINED IN THIS DRAWING IS THE SOLE PROPERTY OF DYTRAN INSTRUMENTS INC. ANY REPRODUCTION IN PART OR AS A WHOLE WITHOUT THE WRITTEN PERMISSION OF DYTRAN INSTRUMENTS INC. IS PROHIBITED	REV.	ECN	DESCRIPTION	BY/DATE	CHK	APPR
	A	6250	ADDED NOTE 5 & 6 AND REFORMATTED	RA, 11/23/09		



<p>6</p> <p>MATES WITH DYTRAN 6811AXX OR 6824AXX CABLE (XX=LENGTH IN FEET)</p> <p>5. OPERATIONAL TEMPERATURE: RANGE -60° TO +250°F</p> <p>4. SENSITIVITY: 10mV/G NOM.</p> <p>3. WEIGHT: 3 GRAMS NOM</p> <p>2. ARROWS INDICATE ACCELERATION DIRECTION FOR POSITIVE OUTPUT</p> <p>1. MATERIAL: TITANIUM ALLOY</p>		<p>NOTES: UNLESS OTHERWISE SPECIFIED.</p>		<p>CONTRACT NO.</p>		<p><b>DYTRAN</b> <b>MASTER</b> INSTRUMENTS, INC. <b>ONLY IF IN RED</b> <small>Chatsworth, CA</small></p>	
<p>3023A</p> <p>USED ON</p> <p>NEXT ASSY</p>		<p>UNLESS OTHERWISE SPECIFIED: INTERPRET DIM &amp; TOL PER ASME Y14.5M - 1994. REMOVE BURRS. COUNTERSINK INTERNAL THDS 90° TO MAJOR DIA. CHAM EXT THDS 45° TO MINOR DIA. THD LENGTHS AND DEPTHS ARE FOR MIN FULL THDS. THDS PER MIL-S-7742. DIMENSIONS APPLY AFTER FINISHING. ALL MACHINED SURFACES. TOTAL RUNOUT WITHIN .005. BREAK SHARP EDGES .005 TO .010. MACHINED FILLET RADII .005 TO .015. WELDING SYMBOLS PER AWS A2.4. ABBREVIATIONS PER MIL-STD-12.</p>		<p>UNLESS OTHERWISE SPECIFIED: DIMENSIONS ARE IN INCHES. DIMENSIONS IN BRACKETS [ ] ARE IN MILLIMETERS TOLERANCES ARE: INCHES    METRIC    ANGLES .XX ± .03    X ± 0.8    ± 1° .XXX ± .010    .XX ± 0.25</p>		<p>TITLE: <b>OUTLINE/INSTALLATION DRAWING, MODEL 3023A</b></p>	
<p>APPLICATION</p> <p>THIRD ANGLE PROJECTION USA</p>		<p>MATERIAL</p> <p>FINISH</p> <p>DO NOT SCALE DRAWING</p>		<p>APPROVALS</p> <p>ORIG    PML    05/09/03</p> <p>CHK    PML    05/12/03</p> <p>APP    NC    05/12/03</p> <p>APP</p>		<p>DATE</p> <p>05/09/03</p> <p>05/12/03</p> <p>05/12/03</p>	
				<p>SIZE    CAGE CODE    DWG. NO.</p> <p><b>A</b>    2W033    127-3023A</p>		<p>REV</p> <p><b>A</b></p>	
				<p>SCALE: 4:1    SOLIDWORKS    SHEET 1 OF 1</p>			



## SPECIFICATIONS, MODEL 3023A TRIAXIAL ACCELEROMETER

SPECIFICATIONS	VALUE	UNITS
PHYSICAL		
WEIGHT	3.0	GRAMS
SIZE (HEIGHT x WIDTH x DEPTH)	0.36 x .36 x .36	INCHES
MOUNTING	ADHESIVE MOUNT	
CONNECTOR	4-PIN [1]	
MATERIAL, HOUSING/CONNECTOR	TITANIUM ALLOY	
PERFORMANCE		
SENSITIVITY, -10 +15% [2]	10.0	mV/G
RANGE, F.S. (each axis)	+/- 500	G
FREQUENCY RESPONSE, -5 / +15%	1.5 to 10000	Hz
ELEMENT NATURAL FREQUENCY, NOM.	40	kHz
EQUIVALENT ELECTRICAL NOISE	.0095	G, RMS
LINEARITY [3]	1	%F.S.
TRANSVERSE SENSITIVITY, MAX,	5	%
SIGNAL POLARITY	POSITIVE FOR MOTION IN DIRECTION OF ARROWS ON HOUSING	
ENVIRONMENTAL		
MAXIMUM VIBRATION	+/- 600	G
MAXIMUM SHOCK	5000	G
TEMPERATURE RANGE	-60 to +250	°F
ENVIRONMENTAL SEAL	HERMETIC	
COEFFICIENT OF THERMAL SENSITIVITY	.03	%/°F
ELECTRICAL		
SUPPLY CURRENT RANGE, (each axis) [4]	2-to 20	mA
COMPLIANCE (SUPPLY) VOLTAGE RANGE (each axis)	+18 to +30	VDC
OUTPUT IMPEDANCE, TYP.	100	OHMS
OUTPUT BIAS VOLTAGE, NOM.	+10	VDC
DISCHARGE TIME CONSTANT, NOM.	0.3	SEC
GROUND ISOLATION	CASE GROUNDED	

[1] Connector mates with Dytran cable assy. Model 6811Axx. (xx = length in feet)

[2] Reference sensitivity measured at 100 Hz, 1 G RMS per ISA RP 37.2

[3] Linearity is % of specified full scale (or any lesser full scale range), zero-based best fit straight line method.

[4] Power only with Dytran LIVM power unit or other Dytran-compatible constant current type power unit. If power is applied without current limiting protection, the internal amplifier will be immediately destroyed.