

Manual for Eagle 100 and Lynx 500

This manual will help you installing, uninstalling and how to connect to a wireless network in different operating systems.

USB cradle usage/ placement	2
Download driver	2
Installation of driver in Windows 7 / 8	3
Installation of driver in Windows 10	4
Installation of driver in Mac OS X	5
Installation of driver in Linux	6
Connect to a wireless network using Windows 7	7
Connect to a wireless network using Windows 8	8
Connect to a wireless network using Windows 10	9
Connect to a wireless network using Mac OS X	10
Uninstallation of driver in Windows	11
Uninstallation of driver in Mac OS X	12
How do I find which driverversion is installed?	13



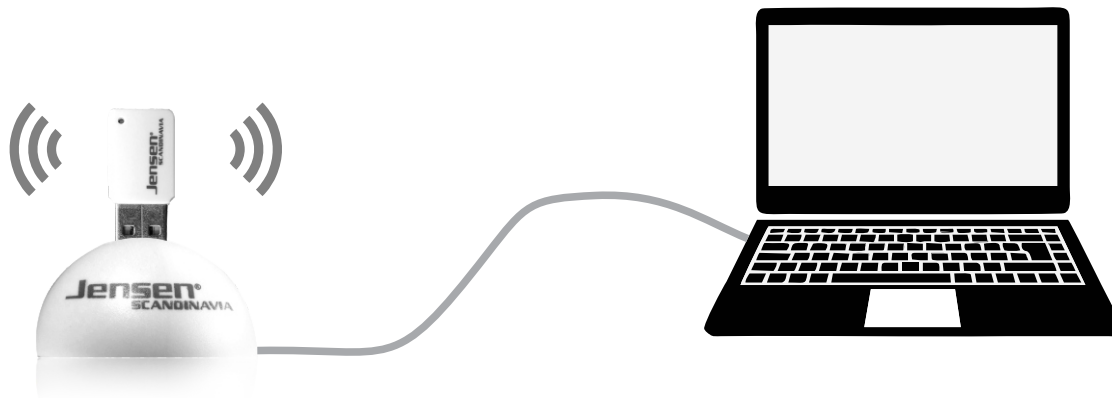
Jensen®

OF SCANDINAVIA

USB cradle usage / placement

In the giftbox you will find a USB cradle/adapter.

To get the best signal/connection you can use the USB cradle. This will allow you to place the Eagle 100/Lynx 500 a place where signal reception is better.



Download driver

On our website www.jensenscandinavia.com/downloads you will find the latest driver available for Eagle 100/Lynx 500.

We recommend that you always download the newest driver before installing Eagle 100/Lynx 500 on your system.

The driverfiles are in zip format and need to be unzipped before you can install it.

In Windows unzipping a file is done by running the file and then select «unzip files», then select where you want to unzip the files to (e. g. desktop) and click unzip.

In Mac OS X zip files are unzipped automatically by just running the file. There will be a new folder in the same folder as the zip file containing the unzipped files.

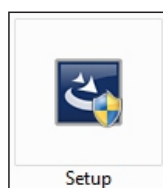
Installation of driver in Windows 7 / 8

Important! Do not connect the Eagle 100/Lynx 500 until the driver is fully installed.

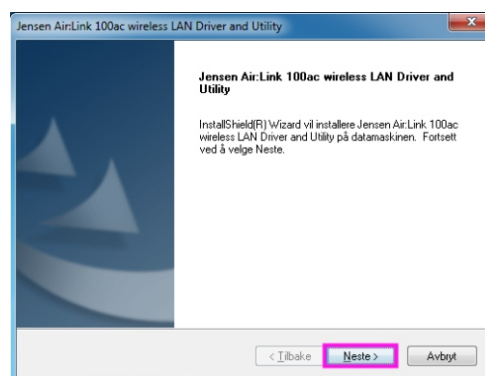
* If you have downloaded driver from our webpage you can run the setup.exe from within the folder you unzipped the driver to.

Insert the Eagle 100/Lynx 500 CD now

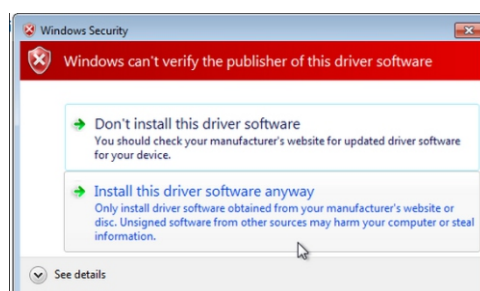
If the installation is not starting automatically please run the setup.exe file manually.
You will find the setup.exe file by click My computer and select CD (usually D:)



Click Next and wait for the setup to start

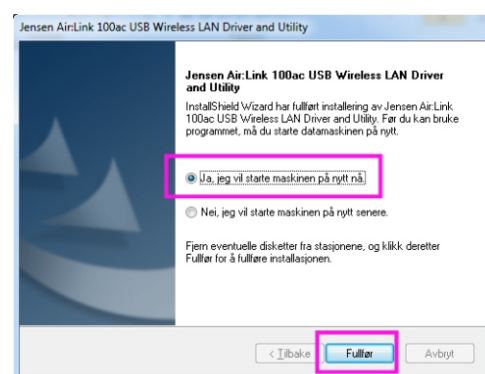


Select «Install this driver software anyway»



Windows now needs a restart

Select «Yes, I want to restart my computer now»



The driver for Eagle 100/Lynx 500 is now installed.

After restart of Windows you can connect the Eagle 100/Lynx 500 to the USB port on your PC.
The new device will be installed automatically and are ready for use after about 30 seconds.

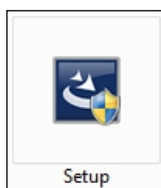
Installation of driver in Windows 10

Important! Do not connect the Eagle 100/Lynx 500 until the driver is fully installed.

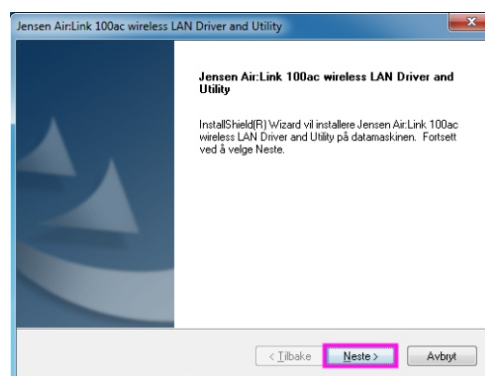
* If you have downloaded driver from our webpage you can run the setup.exe from within the folder you unzipped the driver to.

Insert the Eagle 100/Lynx 500 CD now

If the installation is not starting automatically please run the setup.exe file manually.
You will find the setup.exe file by click My computer and select CD (usually D:)

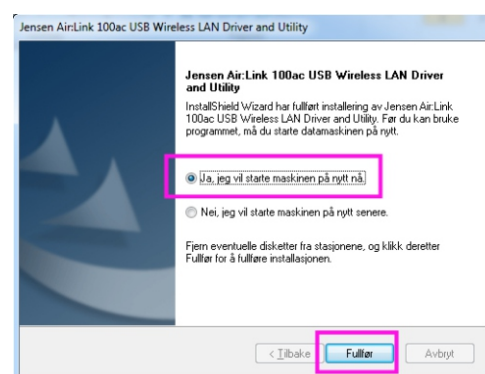


Click Next and wait for the setup to start



Windows now needs a restart

Select «Yes, I want to restart my computer now»



The driver for Eagle 100/Lynx 500 is now installed.

After restart of Windows you can connect the Eagle 100/Lynx 500 to the USB port on your PC.
The new device will be installed automatically and are ready for use after about 30 seconds.

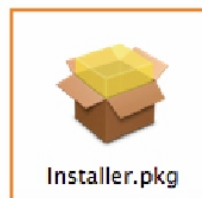
Installation of driver in Mac OS X

Important! Do not connect the Eagle 100/Lynx 500 before the driver is installed.

Insert the driver CD, open Finder and go to the folder Mac -> OS X and open the folder for your OS X version

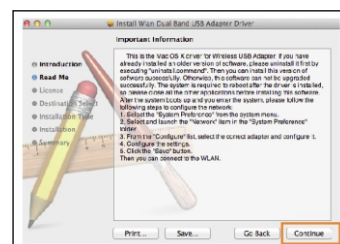
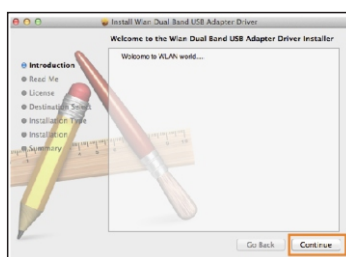
* If you have downloaded the driver please run the file installer.pkg to start the installation.

Double click on the file **Installer.pkg** to start the installation.

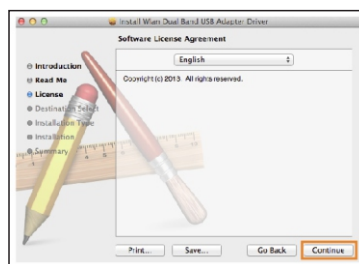


Uninstall.command

Click **Continue** and then **Continue** again.

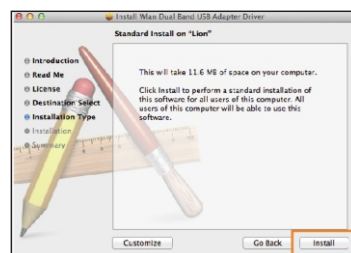


Click **Continue** and then **Agree**



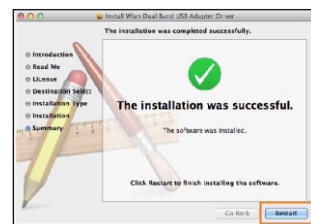
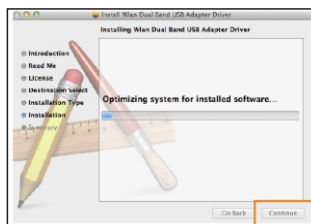
Click **Install**.

Enter the system password for your mac and then click **Continue Installation**.



When the driver is fully installed click **Restart**
This will initiate a reboot of your mac computer.

When the computer have startet again you can insert the Eagle 100/Lynx 500 to your computer.



Installation of driver in Linux

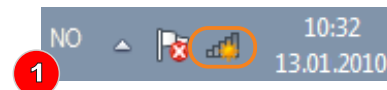
1. Download the latest Linux driver from www.jensenscandinavia.com/downloads
2. Copy the driver to your local folder.
3. Open console
4. Unzip the driver
5. Enter **make** (and click enter)
6. Enter **sudo apt-get install build-essential** (and click enter)
7. If you have the Eagle 500 - enter **sudo modprobe 8812au** (and click Enter)
If you have the Eagle 100 - enter **sudo modprobe 8821au** (and click Enter)

The driver should now be installed and your Eagle 100/Lynx 500 is ready for use.

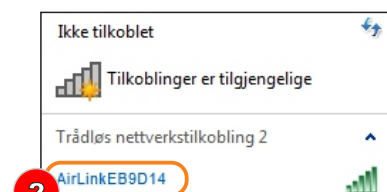
Connect to a wireless network using Windows 7

This guide show you how to connect to your AirLink router based on the built-in wireless tool for Windows 7. In some cases your computer is delivered with a third party software from the computer manufacturer. If so, please contact the computer manufacturer support for more detailed information.

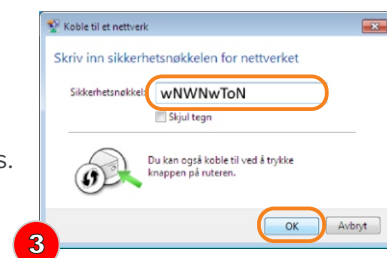
1. Click the icon for wireless network on the system tray



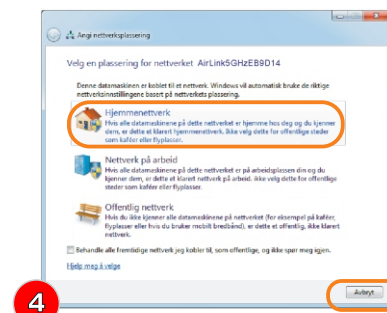
2 You will now see a list of available wireless networks in your area. Select your wireless network from the list. The name of your AirLink router can be found under the router.



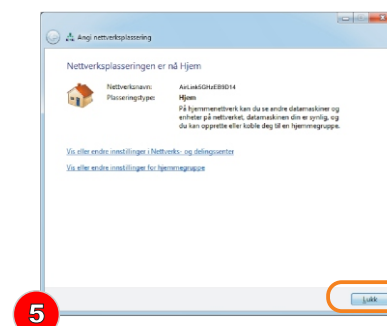
3. Please enter the encryption key for your wireless network and click OK. The encryption key can be found on top or under the router. The key is usually 8 digit with a mix of lower / upper case letters and numbers.



4. Select the placement of your network; **Home, work or public places**



5. Click **Close**.



6. The PC is now connected to the wireless network. The icon for wireless has now changed to white to indicate that the connection is working.



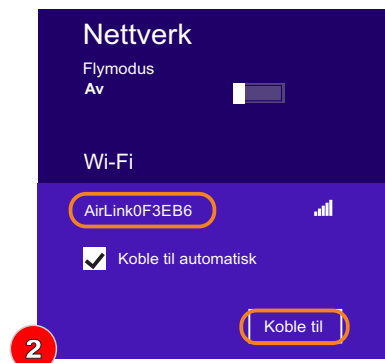
Connect to a wireless network using Windows 8

This guide show you how to connect to your AirLink router based on the built-in wireless tool for Windows 8. In some cases your computer is delivered with a third party software from the computer manufacturer. If so, please contact the computer manufacturer support for more detailed information.

1. Click the icon for wireless network on the system tray

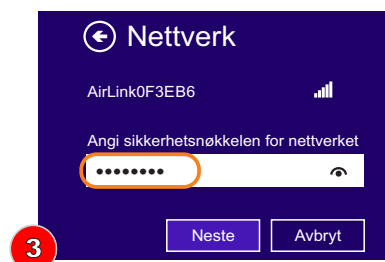


2. You will now see a list of available wireless networks in your area. Select your wireless network from the list and click **Connect**. The name of your router can be found under your router.



If there are several AirLink routers in your neighbourhood, it can be several AirLink routers on the list that look similar. Be carefull to select the AirLink router that matches the network name of your router.

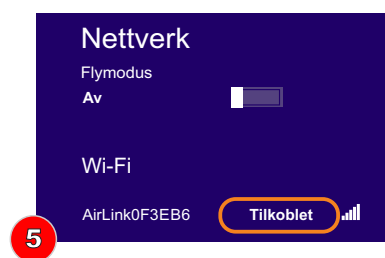
3. Please enter the encryption key for your Jensen router and click **Next**. The encryption key can be found on top or under the router. The key is 8 digit with a mix of lower / upper case letters and numbers.



4. Please select if you wish to activate sharing of files between devices in your network.



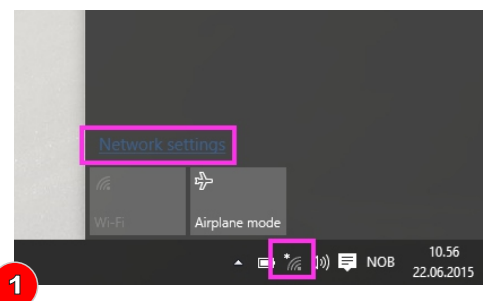
5. The PC is now connected to the wireless network.



Connect to a wireless network using Windows 10

This guide show you how to connect to your AirLink router based on the built-in wireless tool for Windows 10. In some cases your computer is delivered with a third party software from the computer manufacturer. If so, please contact the computer manufacturer support for more detailed information.

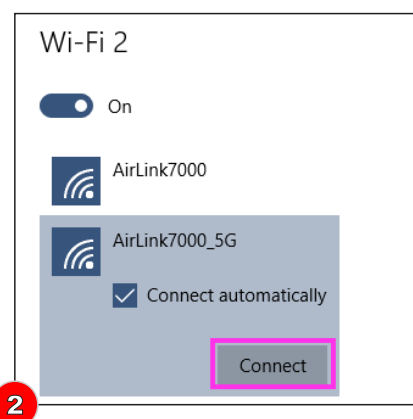
1. Click the icon for wireless network on the system tray and then Network settings



2. You will now see a list of available wireless networks in your area. Select your wireless network from the list and click **Connect**. The name of your router can be found under your router.



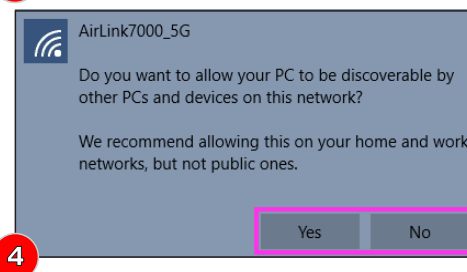
If there are several AirLink routers in your neighbourhood, it can be several AirLink routers on the list that look similar. Be careful to select the AirLink router that matches the network name of your router.



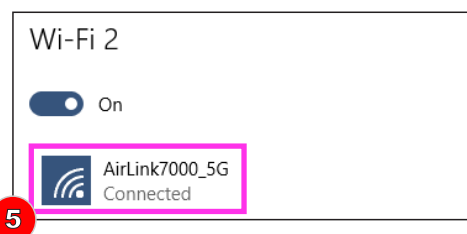
3. Please enter the encryption key for your Jensen router and click **Next**. The encryption key can be found on top or under the router. The key is 8 digit with a mix of lower / upper case letters and numbers.



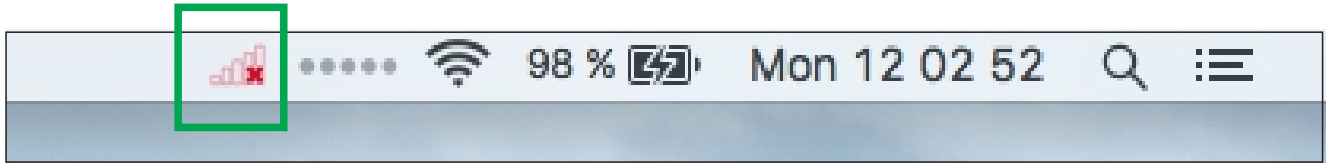
4. Please select if you wish to activate sharing of files between devices in your network.



5. The PC is now connected to the wireless network.



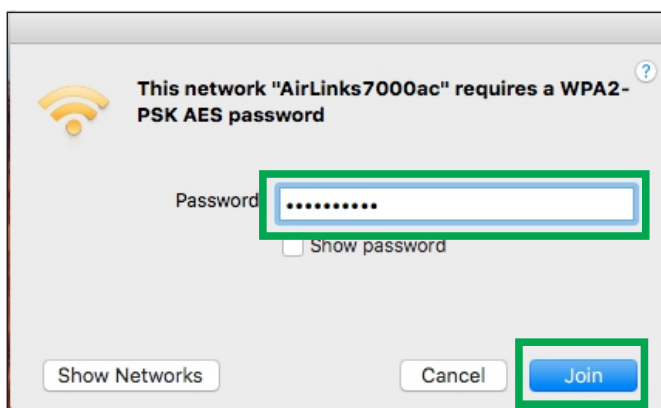
Connect to a wireless network using Mac OS X



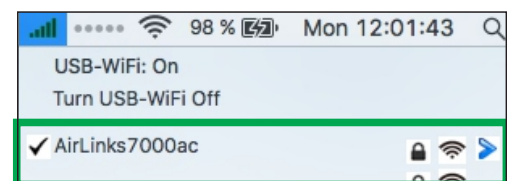
1) Click the icon for the Wireless network Utility as shown above.



2) Click on the wireless network you want to connect to.



3) Enter the password of the wireless network and click Join.



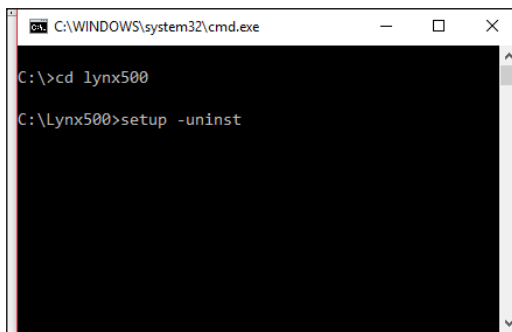
4) Open the Wireless network utility again to see the connection status.

Uninstallation of driver in Windows

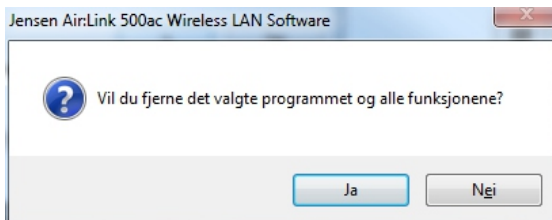
If you need to upgrade the driver for Eagle 100/Lynx 500 we recommend that you first uninstall (*) the current driver.

*) In the below instructions we are showing Lynx 500 as an example.
The procedure for Eagle 100 is the same.

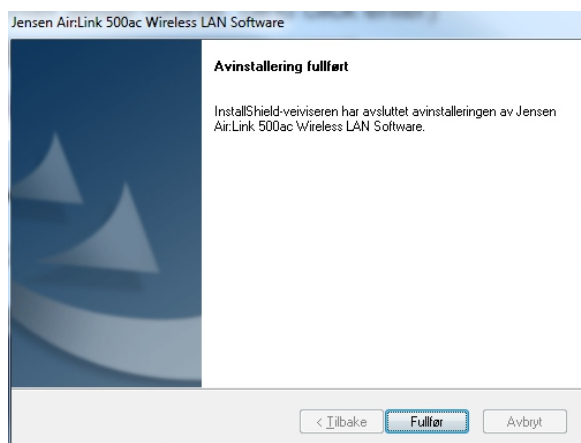
1. Download the latest driver for Eagle 100/Lynx 500 from www.jensenscandinavia.com/downloads
2. Unzip the downloaded file to the folder C:\Lynx500 (or another if you like)
3. Click the Windows key + R and enter CMD (and click Enter)



4. Enter CD\ (and click Enter)
 5. Enter CD Lynx500 (and click enter) *
- * If you have selected to unzip to a different folder you have to navigate to the folder instead.
6. Enter setup -uninst (and click Enter)



7. Click Yes



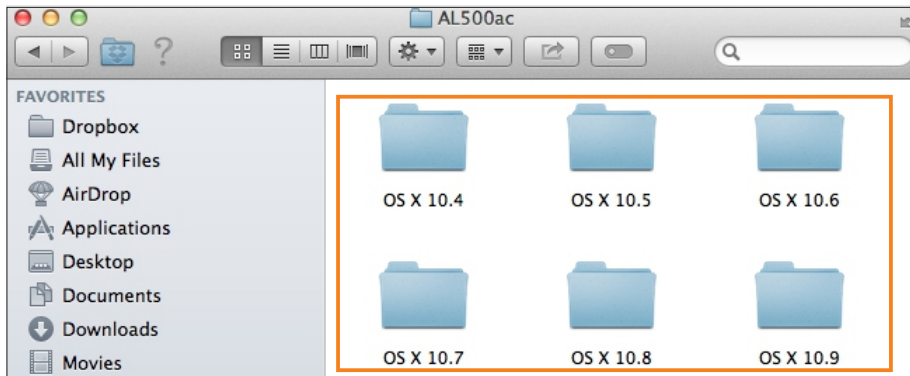
8. Click Finish.

The driver have now been removed from your Windows system, and you can now install the new driver by running the setup.exe file that are within the driver folder (c:\Lynx500)

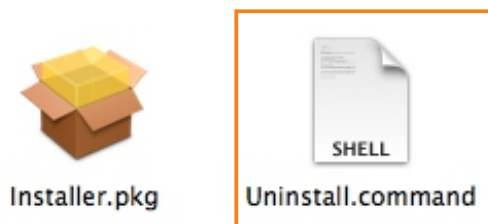


Uninstalling of the driver in Mac OS X

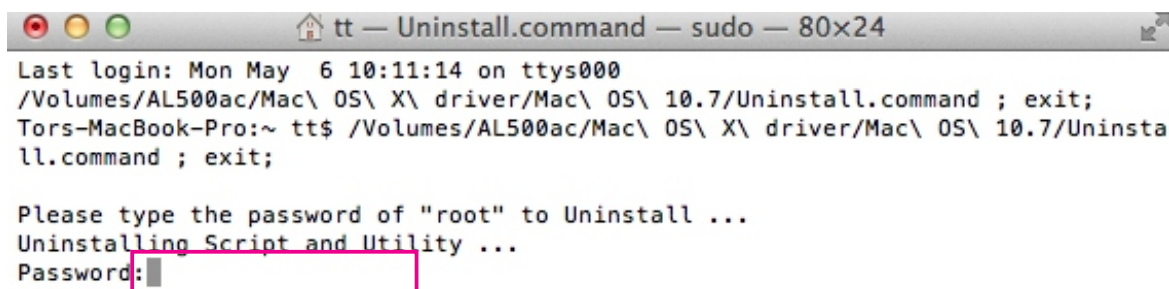
If you want to re-install the driver we recommend that you first uninstall the driver.



- 1) Insert the CD (or go into the folder of the downloaded driver) and open the folder for your OS X version.



- 2) Run the file Uninstall.command

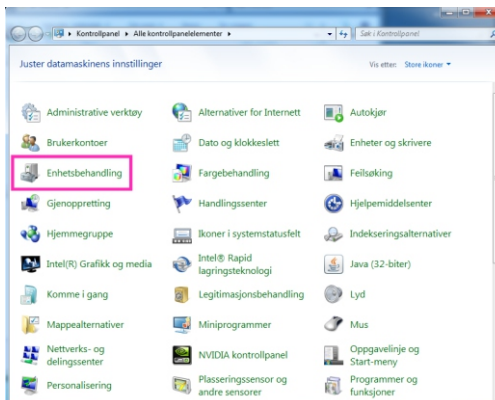


- 3) Enter the password for your OS X system (System password) and click Enter.
The driver for Eagle 100/Lynx 500 will now be uninstalled.

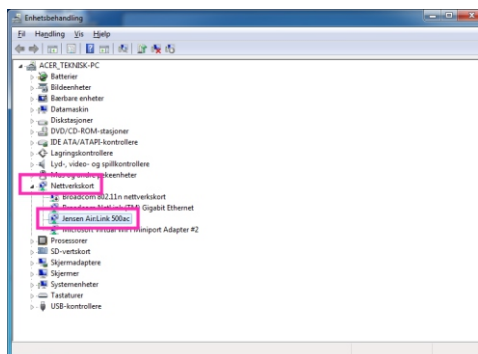
How do I find which driverversion is installed?

In Windows device manager you can find the version of the driver installed on your computer. If you want to upgrade the driver you can compare this version to the one available on our WEB page www.jensenscandinavia.com/downloads

Click Control panel -> System -> Device manager.



Open the Network card tab and then select Eagle 100/Lynx 500



Click the Driver tab.

Here you will see which driver version that are currently installed.

