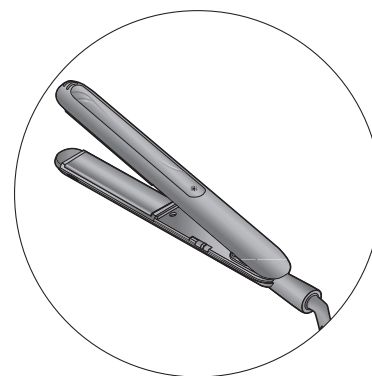


Panasonic®

使用说明书
Operating Instructions
(家用) 多功能美发器
(Household) Straight & Curl Straightener

型号 EH-HV21
Model No.

中文.....	3
English.....	15



Panasonic®

中文

使用说明书 (家用) 多功能美发器 型号 EH-HV21

目录

安全注意事项	4	使用后	13
部件名称	8	清洁	13
最佳定型效果的技巧	9	规格	13
使用前	10	故障排除	14
使用美发器	11		

感谢您购买这款Panasonic产品。
在使用本产品前，请仔细阅读本说明书并妥善保管，以备将来参考。

安全注意事项

为减少受伤、死亡、触电、火灾及财产损失的危险，请务必遵守以下安全注意事项。

标志说明

以下标志用于对因无视标志说明和使用不当而导致的危险、伤害和财产损失的程度进行分类和描述。



警告

表示可能会导致重伤或死亡。



注意

表示可能会导致轻伤或财产损失。

以下标志用于对需要遵循的说明的种类进行分类和描述。



此标志用于提醒用户注意禁止采取的操作步骤。



此标志用于提醒用户注意为了安全操作本产品而必须遵循的操作步骤。

“安全注意事项”中的图示可能与实际产品不同。



警告



请勿存放在儿童和婴幼儿的接触范围之内。请勿让他们使用本产品。

- 否则可能导致烫伤、触电或受伤。



请勿自行改装、拆解或维修。

- 否则可能因运转异常而导致着火或受伤。

请联系授权的维修中心进行维修。



使用时请勿超出家用电源插座或接线的额定功率。

- 在一个家用电源插座上连接太多插头而超出额定功率，可能会因过热而引发火灾。



请勿损坏电源线或插头。

请勿损坏或改装，或用力弯曲、拉拔或扭曲电源线。

另外，请勿在电源线上放置重物或挤压电源线。

- 否则可能因短路而引发触电、烫伤或火灾。



请勿在使用时捆扎电源线。

- 否则可能导致火灾或触电。



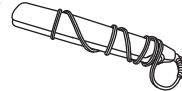
存放时请勿将电源线缠绕在美发器机身上。

- 否则可能导致电源线因负载而断线，并可能因短路而引发触电、烫伤或火灾。










当插头或电源线损坏（出现小裂纹、内部电线可见等）或发烫时，请勿使用。

- 否则可能因短路而导致烫伤、触电或火灾。



警告

-  当插头没有在家用电源插座上插紧时，切勿使用本产品。
- 否则可能因短路而导致烫伤、触电或火灾。
-  请勿用湿手将插头插入家用电源插座，或从电源插座上拔下插头。
- 否则可能导致触电或受伤。
-  请勿用湿手操作本产品。
- 否则可能因短路而引发触电或火灾。
-  请勿在本产品接通电源时，或使用后加热板仍很烫时，使其处于无人看管的状态。
- 否则可能导致火灾、烫伤、附近物品变色或变形。
-  请勿将本产品存放在浴室或湿度较大的地方。也不要将本产品放置在可能溅到水的位置（如卫生间台面）。
- 否则可能导致触电或火灾。
-  请勿在易燃物品（如酒精、汽油、稀释剂、喷雾剂、护发产品、卸甲水）附近使用本产品。
- 否则可能引发爆炸或火灾。
-  使用本产品时，请勿在美发器机身或头发上使用发胶或易燃的美发护发产品。
- 否则可能导致火灾、触电或烫伤。



请勿将本产品放入水中。
请勿在水源附近使用本产品。
请勿在浴缸、淋浴间、洗脸盆或其他盛水器皿附近使用本产品。
- 否则可能导致触电或火灾。



本产品上的该标志表示“请勿在水源附近使用本产品”。

如果发生异常和故障，请立即停止使用并拔下插头。
- 否则可能导致火灾、触电或受伤。



<异常或故障情况>

- 美发器机身偶尔停止，或电源线或插头异常发烫。
- 美发器机身变形或发出烧焦的气味。
- 请立即向授权的维修中心请求检查或维修。

将插头完全插入到插座中。



请务必确保本产品符合其机身上指示的额定电压的电源上运作。
- 否则可能导致火灾或触电。



请定期清洁插头，防止灰尘积聚。
- 否则可能因潮湿造成绝缘故障，从而引发火灾。
请拔下插头，然后用干布擦拭。

警告



在浴室内使用本产品时，使用后请拔下插头，因为即使本产品关闭后，接近水仍存在危险。
- 否则可能导致事故或受伤。



为了进一步保障您的安全，建议在浴室供电电路中安装一个额定漏电动作电流不超过30 mA的漏电保护装置（RCD）。向RCD安装商咨询。
- 否则可能导致事故或受伤。



本品不宜供肢体、感官或精神上有残疾者、缺乏经验和知识者（包括儿童）使用，除非有人对此类人加以监督或者对本产品的使用加以指导，且对使用者的安全能承担责任。请加强对儿童的监督，不要让他们使用本产品。
- 否则可能导致事故或受伤。



如果电源线损坏，为避免危险，必须由制造厂或其维修代理或类似的专职人员来更换。
- 否则可能导致事故或受伤。

注意



存放或使用，请勿缠绕电源线。
- 否则可能导致电源线因负载而断线，导致因短路而引发的触电或火灾。

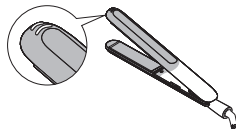


请勿使本产品掉落或受到冲击。
- 否则可能导致触电或着火。



请勿用于婴幼儿。
- 否则可能会造成烫伤。

请勿在使用中或刚使用后触碰阴影部分，因为这些地方会很烫。
- 否则可能会造成烫伤。



请勿使加热部分接触皮肤（耳朵、额头、颈部等）。
- 否则可能会造成烫伤。



请勿在头发上有永久性烫发液时使用本产品。
- 否则可能导致头发或皮肤问题。



请勿将本产品用于除打理头发以外的任何其他用途。（请勿用于宠物等。）
- 否则可能会造成烫伤。

注意

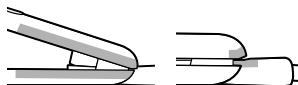


在同一束头发上使用本产品切勿超过 2 次。
- 否则可能会烫伤或损伤您的头发。



使用后，请从家用电源插座上拔下插头。
- 否则可能会因绝缘老化造成的漏电而引发触电或火灾。

使用期间注意不要让双手或手指接触阴影区域。
- 否则可能导致受伤。



拔下插头时，请捏住插头，不要拉扯电源线。
- 否则可能导致电源线断线，并可能因电源短路而导致触电、烫伤或火灾。



将本产品顺着头发向下滑动到底，期间不要停顿。
请仅在干净、干燥且不打结的头发上使用本产品。
建议的使用温度视发质而异。（参见第10页）
- 否则可能会烫伤或损伤您的头发。



请将本产品放在平坦的表面，并远离可燃物或受热后易碎的物体。

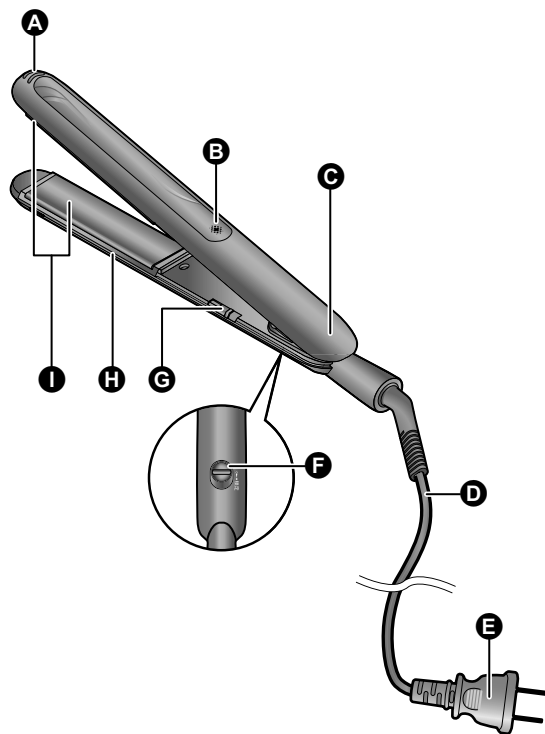
- 否则可能导致火灾、烫伤、附近物品变色或变形。

► 注意

- 定型只能维持1天。
用洗发水洗发后，头发将恢复正常状态。
- 直发效果可能因人而异。
- 一些类型的假发和接发会因热量而变弱并可能变形或老化。
请勿在此类假发和接发上使用本产品。

部件名称

中文

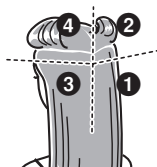


- Ⓐ 夹板梢
- Ⓑ 指示灯
- Ⓒ 手柄
- Ⓓ 电源线
- Ⓔ 插头
- Ⓕ 打开/关闭锁
- Ⓖ 电源开关/温度选择开关[0/180/200/230]
- Ⓗ 夹板
- Ⓘ 加热板



最佳定型效果的技巧

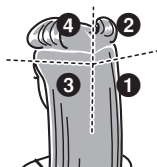
- 1 将头发梳理成相同的方向。
- 2 按照图中所示顺序，用束带和发夹将您的头发固定。
 - 如果您的头发浓密，将头发分成较多区块可以更方便地定型。



- 3 在电源关闭的情况下练习。
 - 请在电源关闭的情况下练习，直到熟练使用。

定型顺序

从头后部最底部的头发开始，按照①到②[或者③到④]的顺序定型。



发型和定型原则

直发效果因各人头发卷曲程度或发型等而异。

难以定型的头发

毛糙的头发，打结的头发

关于直发产品

- 使用完家用直发烫发液之后，切勿立即使用本美发器。否则，可能会损伤您的头发。（使用直发烫发液3-4天后，可使用本美发器。在美容院烫完直发3-4天后，也可使用本美发器。）

关于染发产品

- 染发会损伤头发。染发后，等待2或3天后，方可使用本美发器。如果采用暂时性染发剂，请在使用前将其洗净并弄干头发。
- 染发后需要一段时间才能稳定着色。对于暂时性染发剂的情况，如果染发剂未完全洗净则会弄脏美发器。此外，湿发无法烫直。

使用前

加热加热板

中文

1 解锁打开/关闭锁。



2 将插头插入家用电源插座。

3 滑动电源开关以开启美发器。
• 指示灯点亮。

4 根据头发发质和状态，将电源开关滑动到所需温度（[180]、[200]、[230]）。
• 首次使用美发器时，务必将温度设定为180。

指示灯	温度	发型	发质
230	约230 °C	浓密	稍稍受损
200	约200 °C	↕	↕
180	约180 °C	细软	受损

►注意

- 超过200时视为高温且可能损伤头发。
建议避免在此温度下连续使用，并仅在头发状况良好时使用。
- 开启美发器后，温度将在约15秒后升到工作温度（约100 °C）。
- 达到工作温度所需的时间因操作环境而异。

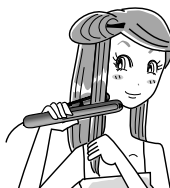
使用美发器

烫直

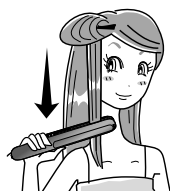
- 1** 拿起一束约5 cm宽的头发。
- 请勿拿起过多头发，否则可能难以烫直头发。



- 2** 以夹板面朝内的方式夹住发束。
- 将该束头发放在加热板中间并夹紧加热板。



- 3** 在夹紧头发的情况下，将美发器朝发梢方向移动。
- 请慢慢移动美发器（以慢于正常梳发的速度）。
 - 如果发觉难以烫直头发，请在捏住夹板梢的同时滑动美发器。
 - 烫直后，使用发膏、发蜡等使头发定型。



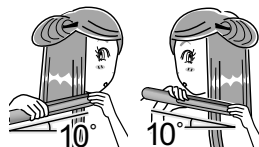
烫卷

<向内卷>

- 1** 拿起一束约3 cm宽的头发。
- 请勿拿起过多头发，否则可能难以烫卷头发。



- 2** 将机身倾斜10° 并夹住该束头发。
- 将该束头发放在加热板中间并夹紧加热板。
 - 在想要烫卷的位置上夹住头发。
 - 朝头后部倾斜机身10° 。





中文

3 夹住发束之后，将机身转动一个稍大于半圈（180°）的角度。

- 用双手转动机身。
- 将机身向内转动。



- 转动半圈后，确保发梢指向头后部。



<向外卷>

将机身向外转动。

- 唯一的区别在于您转动机身的方向。除此之外，请按照向内卷的步骤操作。



4 使美发器保持在转动半圈的位置，然后在夹住发束的同时，向下笔直滑动至发梢。

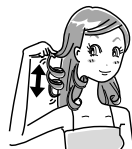
- 请慢慢移动美发器（以慢于正常梳发的速度）。



■ 建议速度（从头皮到发梢）

发长/温度等级	180 - 200	230
中短发	约3秒	约2秒
中长发	约4 - 5秒	约3 - 4秒
长发	约7 - 8秒	约5 - 6秒

- 使用温度等级设定为230的美发器时，请勿超出上述时长。
- 若需更明显的烫卷效果，请将机身转动一整圈（360°），然后滑动至发梢。
- 若需持久的烫卷效果，请在夹住一小束头发的同时，以相同速度慢慢移动美发器。
- 用手抓住已烫卷头发的发根部位。然后上下抖动。将会呈现更明显的烫卷效果。请勿在头发冷却之前梳理烫完的卷发。



- 烫卷后，使用发膏、发蜡等使头发定型。

使用后

- 1 滑动电源开关以关闭美发器。
- 2 从家用电源插座上拔下插头。
- 3 锁定打开/关闭锁，将美发器存放起来。



锁定

清洁

请在美发器已冷却且插头已从家用电源插座上拔下后再进行清洁。

- 当美发器变脏或其表面沾有造型产品等时，使用浸过肥皂水并拧干的布来清洁美发器，再将其擦拭干净。

► 注意

- 请勿使用酒精、除光液或清除剂（洗手液等）。否则可能导致美发器表面出现裂痕或褪色。
- 请勿将本产品与护发产品放在一起，也勿将化妆品附着在本产品上。否则可能因部件开裂导致故障或因塑料老化导致变色。

规格

产品名称	多功能美发器	
产品型号	EH-HV21	
原产地	泰国	
生产日期	请参见商品上的刻字。	
执行标准	GB4706.1, GB4706.15, GB4343.1, GB17625.1	
电源	100 V-130 V~ 50 Hz-60 Hz	220 V-240 V~ 50 Hz-60 Hz
功耗	51 W	55 W
夹板温度	约180 °C至230 °C	

本产品仅适合家庭使用。

故障排除

问题	可能原因	措施
使用期间，本产品散发出烧焦的气味。	▶ 灰尘等附着在加热板上。	▶ 清洁加热板，除去所有附着物。
加热板不热。	▶ 电源线断开连接。	▶ 立即停止使用。
机身部分变形。		▶ 请联系授权的维修中心
电源线弯曲或拧转时，电源时而关闭。		进行维修。
达到工作温度前需要一些时间。	▶ 达到工作温度（约100 ° C）的时间因地区而异。 100 - 130 V：约60秒 220 - 240 V：约15秒	

如果仍无法解决问题，请咨询购买的销售店或联系Panasonic授权的维修中心进行维修。



Operating Instructions
(Household) Straight & Curl Straightener
Model No. EH-HV21

Contents

Safety precautions.....	16	After Use.....	25
Parts identification	20	Maintenance.....	25
Tips for best styling results.....	21	Specifications	25
Before Use.....	22	Troubleshooting	26
Using the straightener	23		

Thank you for purchasing this Panasonic product.

Before operating this unit, please read these instructions completely and save them for future use.

English

Safety precautions

To reduce the risk of injury, loss of life, electric shock, fire, and damage to property, always observe the following safety precautions.

Explanation of symbols

The following symbols are used to classify and describe the level of hazard, injury, and property damage caused when the denotation is disregarded and improper use is performed.



WARNING

Denotes a potential hazard that could result in serious injury or death.



CAUTION

Denotes a hazard that could result in minor injury or property damage.

The following symbols are used to classify and describe the type of instructions to be observed.



This symbol is used to alert users to a specific operating procedure that must not be performed.



This symbol is used to alert users to a specific operating procedure that must be followed in order to operate the unit safely.

Illustrations in "Safety precautions" may vary from the actual product.



WARNING



Do not store within the reach of children or infants. Do not let them use the appliance.

- Doing so may cause burn, electric shock, or injury.



Never modify, disassemble, or repair.

- Doing so may cause ignition or injury due to abnormal operation.

Contact an authorized service center for repair.



Do not use in a way exceeding the rating of the household outlet or the wiring.

- Exceeding the rating by connecting too many plugs to one household outlet may cause fire due to overheating.



Do not damage the cord or plug.

Do not damage, modify, or forcibly bend, pull, or twist the cord.

Also, do not place anything heavy on or pinch the cord.
- Doing so may cause electric shock, burn or fire due to a short circuit.



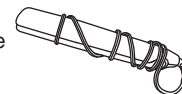
Do not use with the cord bundled.

- Doing so may cause fire or electric shock.



Do not wrap the cord around the main body when storing.


- Doing so may cause the wire in the cord to break with the load, and may cause electric shock, burn or fire due to a short circuit.




Do not use when the plug or cord is damaged (small cracks, inner wires visible, etc.) or hot.


- Doing so may cause burn, electric shock, or fire due to a short circuit.


WARNING


 **Never use the appliance if the plug fits loosely in a household outlet.**
- Doing so may cause burn, electric shock, or fire due to a short circuit.


 **Do not connect or disconnect the plug to a household outlet with a wet hand.**
- Doing so may cause electric shock or injury.


 **Do not use the appliance with a wet hand.**
- Doing so may cause electric shock or fire due to a short circuit.

 **Do not leave the appliance unattended with the power connected or after use while the Iron Plate is still hot.**
- Doing so may cause fire, burn, or discoloration or deformation of objects nearby.

 **Do not store the appliance in a bathroom or location with high humidity. Also, do not place in a location where water may spill (such as top of a vanity).**
- Doing so may cause electric shock or fire.

 **Do not use in proximity of flammable materials (such as alcohol, benzene, thinner, spray, hair care product, nail polish remover).**
- Doing so may cause an explosion or fire.


 **Do not apply hair spray or flammable hair product to the main body or hair while using the appliance.**
- Doing so may cause fire, electric shock, or burn.


 **Do not immerse the appliance in water. Do not use the appliance near water. Do not use the appliance near bathtubs, showers, basins or other vessels containing water.**
- Doing so may cause electric shock or fire.




This symbol on the appliance means “Do not use this appliance near water”.


Immediately stop using and remove the plug if there is any abnormality or malfunction.
- Failure to do so may cause fire, electric shock, or injury.


 **<Abnormality or malfunction cases>**
• **The main body stops occasionally, or the cord or the plug is abnormally hot.**
• **The main body is deformed or smells of burning.**
- Immediately request inspection or repair at an authorized service center.


Fully insert the plug.
 **Always ensure the appliance is operated on an electric power source matched to the rated voltage indicated on the appliance.**
- Failure to do so may cause fire or electric shock.


Regularly clean the plug to prevent dust from accumulating.
 - Failure to do so may cause fire due to insulation failure caused by humidity.
Disconnect the plug and wipe with a dry cloth.

WARNING


 When the appliance is used in a bathroom, unplug it after use since the proximity of water presents a hazard even when the appliance is switched off.
- Failure to do so may cause an accident or injury.


 For additional protection, the installation of a residual current device (RCD) having a rated residual operating current not exceeding 30 mA is advisable in the electrical circuit supplying the bathroom. Ask your installer for advice.
- Failure to do so may cause an accident or injury.


 This appliance is not intended for use by persons (including children) with reduced physical, sensory or mental capabilities, or lack of experience and knowledge, unless they have been given supervision or instruction concerning use of the appliance by a person responsible for their safety. Children should be supervised to ensure that they do not play with the appliance.
- Failure to do so may cause an accident or injury.

 If the supply cord is damaged, it must be replaced by the manufacturer, its service agent, or similarly qualified persons in order to avoid a hazard.
- Failure to do so may cause an accident or injury.

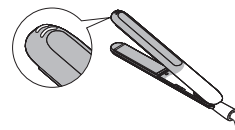
CAUTION


 **Do not store or use the cord in a twisted state.**
- Doing so may cause the wire in the cord to break with the load, leading to electric shock or fire due to a short circuit.


 **Do not drop or subject to shock.**
- Doing so may cause electric shock or ignition.


 **Do not use on infants.**
- Doing so may cause burn.

Do not touch the shaded areas when in use or right after use since they will be hot.
- Doing so may cause burn.



 **Do not let the heated section touch the skin (ears, forehead, neckline, etc.).**
- Doing so may cause burn.

 **Do not use the appliance with permanent wave liquids applied to your hair.**
- Doing so may cause hair or skin trouble.

 **Do not use the appliance for any purpose other than the care of your own hair. (Do not use on pets, etc.)**
- Doing so may cause burn.



CAUTION



Do not use the appliance on the same bundle of hair for more than 2 times.

- Doing so may cause burn or damage your hair.



Disconnect the plug from the household outlet after use.

- Failure to do so may cause electric shock or fire due to electrical leakage resulting from insulation deterioration.

During use, be careful not to catch your hands or fingers in the shaded areas.

- Failure to do so may cause injury.



Disconnect the plug by holding onto it instead of pulling on the cord.



- Failure to do so may cause the wire in the cord to break, and may cause burn, electric shock, or fire due to a short circuit.

Slide the appliance down your hair without stopping.



Only use the appliance on clean, dry and tangle-free hair.

Recommended temperature for use depends on each hair type of condition. (see page 22)

- Failure to do so may cause burn or damage your hair.



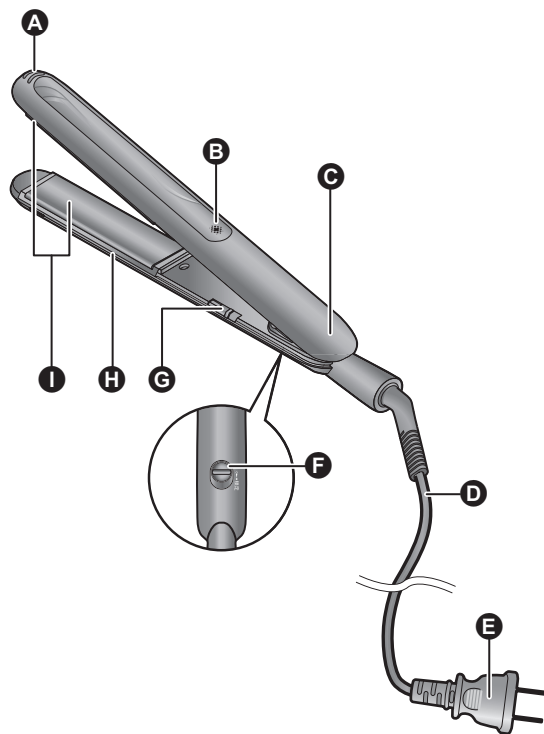
Always place the appliance on a heat-resistant, stable flat surface.

- Failure to do so may cause fire, burns or discoloration or deformation of surrounding objects.

► Notes

- Styling will hold for 1 day only.
Hair will return to its normal condition after shampoo.
- Effectiveness of straightening may vary among individuals.
- Some types of wigs and hair extensions will be weakened by heat and may deform or deteriorate. Do not use the appliance on these items.

Parts identification



- A** Holding Tip
- B** Illumination Lamp
- C** Grip
- D** Cord
- E** Plug
- F** Open/Close Lock
- G** Power Switch/Temperature Selector [0/180/200/230]
- H** Press Plate
- I** Iron Plate

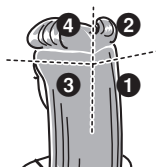


Tips for best styling results

1 Brush your hair to ensure it is lying in the same direction.

2 Bundle and pin to hold your hair in the order shown in the illustration.

- If you have thick hair, separating the hair into more blocks will make the styling easier.

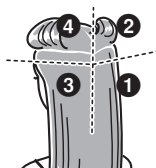


3 Practice with the power off.

- Please practice with the power off until you get used to it.

Styling order

Start styling from the bottom of the back of your head in the order of ① to ② and ③ to ④.



Hair types and styling guidelines

The hair styling effect may differ among individuals by the degree of curliness and hair type.

Hard-to-style hair

Coarse hair, Kinked hair

About hair-straightening products

- Do not use the straightener immediately after a home straight perm liquid is used. Doing so may damage your hair. (The straightener may be used 3-4 days after a straight perm liquid. The straightener may also be used 3-4 days after having your hair treated at a beauty parlor.)

About dyeing products

- Dyeing places great stress on the hair. After dyeing please wait for 2 or 3 days before using the straightener. If you use a temporary dye, wash it out and dry your hair before use.
- It takes some time after dyeing for the color to settle. In the case of the temporary dye, the dye can dirty the straightener if it is not fully washed out. Also, your hair cannot be straightened when it is wet.

Before Use

Heating the Iron Plate

1 Release the Open/Close Lock.



2 Insert the plug into the household outlet.

3 Slide the Power Switch to turn on the straightener.

- The illumination lamp glows.

4 Slide the Power Switch to your desired temperature ([180], [200], [230]) according to the type and condition of your hair.

- When you use the straightener for the first time, be sure to set the temperature level to 180.

Indicator	Temperature	Hair type	Hair Condition
230	Approx. 230 °C	Thick	Less damaged
200	Approx. 200 °C	↕	↕
180	Approx. 180 °C	Fine	Damaged

► Notes

- A temperature level of more than 200 is high and may damage your hair.
We recommend that you avoid continuous lengthy use of this level, and only use it if your hair is in a suitable condition.
- After switching on, the straightener reaches operating temperature (approximately 100 °C) after about 15 seconds.
- The time taken to reach operating temperature may vary depending on the operating environment.

Using the straightener

Straightening

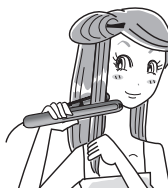
1 Hold a bundle of hair with a width of approximately 5 cm.

- Do not take much hair as it may be difficult to straighten your hair.



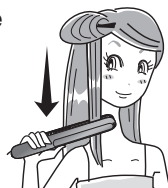
2 Clamp the bundle of hair with the Press Plate facing inwards.

- Clamp the bundle of hair in the center of the Iron Plate.



3 With the hair clamped, move the straightener straight toward the hair ends.

- Move the straightener slowly (at a speed slower than ordinary brushing).
- If you find the hair hard to straighten, slide the straightener while holding the Press Plate Tips.
- After straightening, style your hair using hair cream, wax, etc.



Curling

<For inward curls>

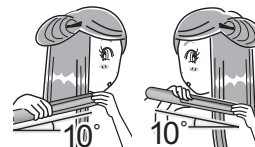
1 Hold a bundle of hair with a width of approximately 3 cm.

- Do not take much hair as it may be difficult to style your hair.



2 Tilt the main body 10° and clamp the bundle of hair.

- Clamp the bundle of hair in the center of the Iron Plate.
- Clamp the hair just above the point at which you want to make curls.
- Tilt the main body 10° towards the back-of-the-head.



3 After clamping a bundle of hair, rotate the main body through an angle amounting to slightly more than a half-rotation (180°).

- Rotate the main body with both hands.
- Rotate the main body inwards.



- After the half-rotation, ensure that the hair tips protrude towards the back-of-the-head.

<For outward curls>

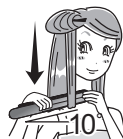
Rotate the main body outwards.

- The only difference is the direction in which you rotate the main body. Otherwise, follow the steps for inward curls.



4 Keeping the straightener in the half-rotated position, slide it straight down towards the hair ends while clamping the bundle of hair.

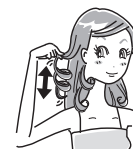
- Move the straightener slowly (at a speed slower than ordinary brushing).



■ Recommended speeds (from scalp to hair ends)

Hair length/ Temperature level	180 - 200	230
Medium	Approx. 3 sec.	Approx. 2 sec.
Semi-long	Approx. 4 - 5 sec.	Approx. 3 - 4 sec.
Long	Approx. 7 - 8 sec.	Approx. 5 - 6 sec.

- When using the straightener with the temperature level set at 230, do not exceed the time mentioned.
- For a more defined curl, make a full rotation (360°) of the main body and slide it towards the hair ends.
- For an effective curl, move the straightener slowly at a same speed while clamping a small bundle of hair.
- Grip the root of an already created curl with your hand. Then move it up and down. It will give you a more defined curl.
Do not detangle the finished curls until the hair cools down.
- After curling, style your hair using hair cream, wax, etc.



After Use

- 1 Slide the Power Switch to turn off the straightener.
- 2 Remove the plug from the household outlet.
- 3 Shut the Iron Plate with the Open/Close Lock to store it.



Maintenance

Clean the straightener after it has cooled and with the plug removed from the household outlet.

- When the straightener has become dirty or styling product, etc. have gotten onto it, please soak a rag in soapy water, wring it out, and wipe the unit clean.

► Notes

- Do not use alcohol, polish remover, or detergent (liquid hand soap, etc.).
Doing so may crack or discolor the surface of the straightener.
- Do not leave the appliance with hair care products or cosmetics still adhered on it.
Doing so may result in malfunction of part cracks or discoloration due to plastic deterioration.

Specifications

Product name	Straight & Curl Straightener	
Product model	EH-HV21	
Place of origin	Thailand	
Date of production	See engraving on the commodity.	
Execution standard	GB4706.1, GB4706.15, GB4343.1, GB17625.1	
Power source	100 V-130 V~ 50 Hz-60 Hz	220 V-240 V~ 50 Hz-60 Hz
Power consumption	51 W	55 W
Iron temperature	Approx. 180 °C to 230 °C	

This product is intended for household use only.

Troubleshooting

Problem	Possible cause	Action
During use, the unit gives off a burning smell.	▶ Dust etc. are adhered to the Iron Plate.	▶ Clean the Iron Plate to remove any adherents.
The Iron Plate does not get hot.	▶ The cord is disconnected.	▶
The main body is partially deformed.		▶ Stop using immediately. Contact an authorized service center for repair.
If the Power cord is bent or twisted, sometimes the power turns off.		▶
It takes time to reach operating temperature.	▶ The time to reach operating temperature (approximately 100 °C) differs depending on the area. 100 - 130 V: about 60 seconds 220 - 240 V: about 15 seconds	

If problems still cannot be solved, contact the store where you purchased the unit or a service center authorized by Panasonic for repair.

[illegible]

This image shows a single sheet of white paper with horizontal ruling lines. The lines are evenly spaced and run across the width of the page. There are no margins, text, or other markings on the paper.



Panasonic

保修证

保修条款

有关保修期内Panasonic商品的保修（无偿修理），从购入之日起开始实施。

1.保修期内的商品只可在Panasonic认定维修店进行保修；保修时，请出示本保修证及购机发票。
以下两点需特别注意：

- a. 本保修证遗失后不再补发，请妥善保管。
- b. 本保修证仅限于中华人民共和国内有效(香港、澳门、台湾三地区暂不可使用)。

2.自购入之日起在以下期间内，在正常使用中发生故障的情况下进行保修。

- 整机（除商用产品）.....2年内无偿
- 整机（商用产品）.....6个月

3.属下列情况之一者，即使在保修期内，也不能以保修对待，但是可以实行收费修理：

- a. 未按商品使用说明书要求使用、维护、保管而造成损坏的；
- b. 因不正确操作、电源不正常、破损（如：掉落等）而造成损坏的；
- c. 不经Panasonic认定维修店维修人员拆卸造成损坏的；
- d. 不能出示本保修证及有效购机发票的；
- e. 保修证上记录的信息与商品实物标识不符或者涂改的；
- f. 因不可抗力因素（如雷电、地震、火灾、水灾等）造成损坏的。

4.本保修条款只适用于消费者个人为生活消费需要而购买使用的场合，不适用于经营性等使用。



[商品信息]

商品名称: 多功能美发器 产 地: 泰国

商品型号: EH-HV21 制造编号:

[保修回执] 以下回执是保修的重要依据，请勿自行撕下

保修结算 4

商品型号: EH-HV21 制造编号:

保修结算 3

商品型号: EH-HV21 制造编号:

保修结算 2

商品型号: EH-HV21 制造编号:

保修结算 1

商品型号: EH-HV21 制造编号:

促销员留存

商品型号: EH-HV21 制造编号:





保修证管理编码印刷处:

【销售记录】此处所载信息仅于商品保修时作核对之用，本公司不对该信息进行收集记录。

销售店
(盖章)

销售日期:

发票号码:

顾客姓名:

联系电话:

顾客地址: 邮 编:

销售店名称: 销售店电话:

销售店地址: 邮 编:

【维修记录】

维修店名称: 联系电话: 送修日:

维修店地址: 邮 编:

故障内容: 故障原因:

维修内容: 维修日期:

维修员签字: 交验日期:

维修店名称: 联系电话: 送修日:

维修店地址: 邮 编:

故障内容: 故障原因:

维修内容: 维修日期:

维修员签字: 交验日期:

维修店名称: 联系电话: 送修日:

维修店地址: 邮 编:

故障内容: 故障原因:

维修内容: 维修日期:

维修员签字: 交验日期:

本保修证因含有消费者个人信息，请妥善保管。

Panasonic客户咨询服务中心: 4008-811-315

Panasonic官方网站: <http://panasonic.cn>

松下家电（中国）有限公司



产品中有害物质的名称及含量

部件名称	有害物质						备注
	铅 (Pb)	汞 (Hg)	镉 (Cd)	六价铬 (Cr (VI))	多溴联苯 (PBB)	多溴二苯醚 (PBDE)	
塑料部件	○	○	○	○	○	○	
金属部件	×	○	○	○	○	○	
电源线、 内部配线	×	○	○	○	○	○	仅部分机型 含有该部件
电气回路组件	×	○	○	○	○	○	仅部分机型 含有该部件
玻璃、陶瓷	×	○	○	○	○	○	仅部分机型 含有该部件
本表格依据SJ/T 11364的规定编制。 ○：表示该有害物质在该部件所有均质材料中的含量均在GB/T 26572规定的限量要求以下。 ×：表示该有害物质至少在该部件的某一均质材料中的含量超出GB/T 26572规定的限量要求。							



此标志标识产品的环保使用期限为10年，在环保使用期限内，产品中含有的有毒有害物质或元素在正常使用下不会发生外泄或突变，用户使用该产品不会对环境造成严重污染或对其人身、财产造成严重损害。产品过了环保使用期要废弃时，必须按国家相关法律法规进行合理处理。



制造商：松下电子制造(泰国)株式会社
Navanakorn Industrial Estate, Zone 3 No. 106 Moo 18, Khlong 1,
Khlong Luang, Pathum Thani 12120, Thailand
进口商：松下家电(中国)有限公司
杭州经济技术开发区 松乔街2号
原产地：泰国

® CH, EN

泰国印刷
Printed in Thailand
EH9210HV214951 Y0619-0
发行：2019年06月