

# USER MANUAL RIC – HEARING SYSTEMS SUN LI-ION G4

# CONTENT

Welcome	4
Your hearing instruments	5
Instrument type	5
Getting to know your hearing instruments	5
Components and names	6
Controls	8
Settings	9
Daily use	10
Charging	10
Turning on and off	11
Switching to standby mode	12
Inserting and removing the hearing instruments	13
Adjusting the volume	17
Changing the hearing program	18
Further adjustments (optional)	18
Special listening situations	19
On the phone	19
Audio induction loops	21

Maintenance and care	22
Hearing instruments	22
Ear pieces	25
Professional maintenance	27
Important safety information	28
Further information	30
Safety information	30
Wireless functionality	30
Accessories	30
Operating, transport and storage conditions	31
Disposal information	32
Symbols used in this document	32
Troubleshooting	33
Service and warranty	34

## WELCOME

Thank you for choosing our hearing instruments to accompany you through everyday life. Like anything new, it may take you a little time to become familiar with them.

This guide, along with support from your Hearing Care Professional, will help you understand the advantages and greater quality of life your hearing instruments offer.

To receive the most benefit from your hearing instruments, it is recommended that you wear them every day, all day. This will help you get adjusted to them.



### CAUTION

It is important to read this user guide and the safety manual thoroughly and completely. Follow the safety information to avoid damage or injury.



Before using your hearing instruments for the first time, fully charge them. Follow the instructions in the charger's user guide.

## YOUR HEARING INSTRUMENTS



This user guide describes optional features that your hearing instruments may or may not have.

Ask your Hearing Care Professional to indicate the features that are valid for your hearing instruments.

### INSTRUMENT TYPE

Your hearing instruments are a RIC (Receiver-in-Canal) model. The receiver is placed within the ear canal and connected to the instrument via a receiver cable. The instruments are not intended for children under the age of 3 years or persons with a developmental age of under 3 years.

A power cell (lithium-ion rechargeable battery) is permanently built into your hearing instrument. This enables easy charging with our inductive charger.

### GETTING TO KNOW YOUR HEARING INSTRUMENTS

It is recommended to familiarize yourself with your new hearing instruments. With the instruments in your hand try using the controls and note their location on the instrument. This will make it easier for you to feel and press the controls while wearing the hearing instruments.





**i** If you have problems pressing the controls of your hearing instruments while wearing them, you can ask your Hearing Care Professional whether a remote control or a smartphone app to control your instruments is available.

## COMPONENTS AND NAMES




- |                       |  |
|-----------------------|--|
| 1 Ear piece           | 5 Push button<br>(control, on/off switch)  |
| 2 Receiver            | 6 Side indicator<br>(red = right ear,<br>blue = left ear)<br>and receiver connection |
| 3 Receiver cable      |  |
| 4 Microphone openings |  |

You can use standard or custom-made ear pieces.

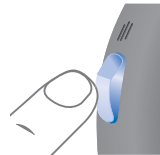
Standard ear pieces		Size
<input type="checkbox"/>		Click Dome, Open or Closed
<input type="checkbox"/>		Click Dome Semi-open
<input type="checkbox"/>		Click Dome Double
<input type="checkbox"/>		Click Sleeve, Open or Closed

You can easily exchange the standard ear pieces. Read more in section "Maintenance and care".

Custom-made ear pieces	
<input type="checkbox"/>	 CLIC MOULD

CONTROLS

With the push button you can, for example, switch hearing programs. The Hearing Care Professional has programmed your desired functions to the push button.



Push button function	L	R
Press briefly:		
Program change	<input type="checkbox"/>	<input type="checkbox"/>
Volume up	<input type="checkbox"/>	<input type="checkbox"/>
Volume down	<input type="checkbox"/>	<input type="checkbox"/>
Tinnitus-Noiser volume up	<input type="checkbox"/>	<input type="checkbox"/>
Tinnitus-Noiser volume down	<input type="checkbox"/>	<input type="checkbox"/>
Press long:		
Turn on/off	<input type="checkbox"/>	<input type="checkbox"/>

L = Left, R = Right

**i** You can also ask your Hearing Care Professional whether a remote control or a smartphone app to control your instruments is available.

SETTINGS

Hearing programs
1
2
3
4
5
6
Read more in section "Changing the hearing program".
Features
<input type="checkbox"/> <b>AutoPhone</b> automatically switches to the telephone program when the telephone receiver approaches the ear. Read more in section "On the phone".
<input type="checkbox"/> <b>2earPhone</b> transmits the telephone call into both ears when the telephone receiver is held to either ear. Read more in section "On the phone".
<input type="checkbox"/> The <b>Tinnitus-Noiser</b> feature generates a sound to distract you from your tinnitus.
<input type="checkbox"/> The <b>binaural synchronization</b> functionality enables simultaneous control of both hearing instruments. Read more in section "Wireless functionality".

# DAILY USE

## CHARGING

Place your hearing instruments in the charger.

- Follow the instructions in the charger's user guide. You can also find useful tips for charging in the charger's user guide.



## LOW POWER INDICATION

You will hear an alert signal to indicate the power cell is running low. The signal will be repeated every 15 minutes. Depending on the usage of your hearing instruments, you have approximately 2 hours to charge your hearing instruments before they stop working.

## REPLACEMENT OF THE POWER CELL

If the fully charged hearing instruments do not last over a full day of use (16 hours) then we recommend to have the power cell replaced by your Hearing Care Professional.

## TURNING ON AND OFF

You have the following options to turn your hearing instruments on or off.

Via charger:

- Turning on: Take the instruments out of the charger. The startup melody is played in your hearing instruments. The **default** volume and hearing program are set.
- Turning off: Place the hearing instruments in the charger.

Note that the charger must be connected to the power supply. For details refer to the charger's user guide.

Via push button:

- Turning on: Press and hold the push button until the startup melody starts to play. Release the push button while the melody is playing. The **default** volume and hearing program are set.
- Turning off: Press and hold the push button for several seconds. Depending on the settings of your push button, signal tones may be played before the hearing instrument turns off.

See also the tips for charging in the charger's user guide.

## SWITCHING TO STANDBY MODE

Via remote control or smartphone app, you can switch your hearing instruments to standby mode. This mutes the hearing instruments. When you leave standby mode, the **previously** used volume and hearing program are set.

Note:

- In standby mode, the hearing instruments are **not** turned off completely. They draw some power.

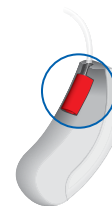
Therefore we recommend to use standby mode only for a short period of time.

- If you want to leave standby mode, but the remote control or app is not at hand: Turn your hearing instruments off and on again (via push button or by shortly placing them in the charger until one or more orange LEDs light up). In this case, the **default** volume and hearing program are set.

## INSERTING AND REMOVING THE HEARING INSTRUMENTS

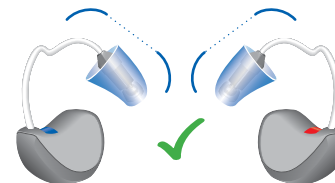
Your hearing instruments have been fine-tuned for your right and left ear. Colored markers indicate the side:

- red marker = right ear
- blue marker = left ear

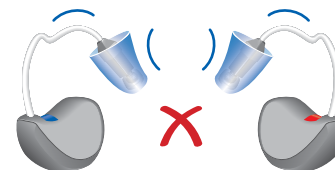


- When using Click Sleeves: Ensure that the curve of the Click Sleeve corresponds with the bend in the receiver cable.

Correct:



Incorrect:

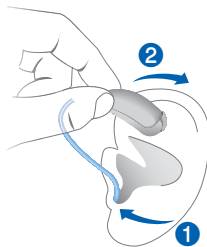


Inserting a hearing instrument:

- Hold the receiver cable at the bend closer to the ear piece.
- Carefully push the ear piece in the ear canal ①.
- Twist it slightly until it sits well.

Open and close your mouth to avoid accumulation of air in the ear canal.

- Lift the hearing instrument and slide it over the top of your ear ②.



#### CAUTION

Risk of injury!

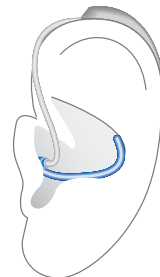
- Insert the ear piece carefully and not too deeply into the ear.



- It may be helpful to insert the **right** hearing instrument with the **right** hand and the **left** hearing instrument with the **left** hand.
- If you have problems inserting the ear piece, use the other hand to gently pull your earlobe downwards. This opens the ear canal and eases insertion of the ear piece..

The optional retention strand helps to securely retain the ear piece in your ear. To position the retention strand:

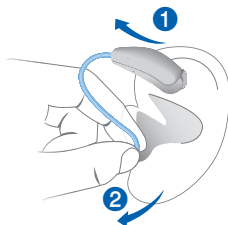
- Bend the retention strand and position it carefully into the bottom of the bowl of your ear (refer to the picture).





Removing a hearing instrument:

- Lift the hearing instrument and slide it over the top of your ear ①.
- If your hearing instrument is equipped with a custom shell or a Click Mold, remove it by pulling the small removal cord toward the back of your head.
- For all other ear pieces: Grip the receiver in the ear canal with two fingers and pull it carefully out ②.



Do not pull the receiver cable.



#### CAUTION

Risk of injury!

- In very rare cases the ear piece could remain in your ear when removing the hearing instrument. If this happens, have the ear piece removed by a medical professional.

Clean and dry your hearing instruments after usage.

Read more in section "Maintenance and care".

## ADJUSTING THE VOLUME

Your hearing instruments automatically adjust the volume to the listening situation.

- If you prefer manual volume adjustment, press the push button briefly or use a remote control.

Refer to section "Controls" for the setting of the push button.

An optional signal tone can indicate the volume change. Once the maximum or minimum volume has been reached, you may hear an optional signal tone.

## CHANGING THE HEARING PROGRAM

Depending on the listening situation, your hearing instruments automatically adjust their sound.

Your hearing instruments may also have several hearing programs which allow you to change the sound, if needed. An optional signal tone can indicate the program change.

- To change the hearing program, press the push button briefly or use a remote control.

Refer to section "Controls" for the setting of your controls.  
Refer to section "Settings" for a list of your hearing programs.



If the AutoPhone or the 2earPhone function is activated, the hearing program switches automatically to a telephone program when the telephone receiver is close to the ear.

Read more in section "On the phone".

## FURTHER ADJUSTMENTS (OPTIONAL)

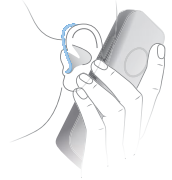
The controls of your hearing instruments can also be used to change, for example, the **Tinnitus-Noiser** level.

Refer to section "Controls" for the setting of your controls.

## SPECIAL LISTENING SITUATIONS

### ON THE PHONE

When you are on the phone, hold the telephone receiver slightly above your ear. The hearing instrument and telephone receiver have to be aligned. Turn the receiver slightly so that the ear is not completely covered.



### TELEPHONE PROGRAM

You may prefer a certain volume when using the phone. Ask your Hearing Care Professional to configure a telephone program.

- Switch to the telephone program whenever you are on the phone or use the automatic program switch.

If a telephone program or the automatic program switch are configured for your hearing instruments, it is listed in section "Settings".

## AUTOMATIC PROGRAM SWITCH

### (AutoPhone or 2earPhone)

Your hearing instrument can **automatically** select the telephone program when you bring the telephone handset close to the hearing instrument. 2earPhone even transmits the call into both ears. When you are finished speaking on the phone, move the handset away from the hearing instrument and microphone mode will re-engage.

If you want to use this function, ask your Hearing Care Professional to do the following:

- Activate the AutoPhone or the 2earPhone function.
- Check the telephone receiver's magnetic field.

For the automatic program switch, your hearing instrument detects the telephone receiver's magnetic field. Not all telephones produce a magnetic field strong enough to activate this function. In this case, you can use the AutoPhone magnet, which is available as an accessory, and attach it to the telephone receiver.

See the AutoPhone magnet user guide for instructions on how to position the magnet.



### NOTICE

Use the approved AutoPhone magnet only. Ask your Hearing Care Professional for this accessory.

## AUDIO INDUCTION LOOPS

Some telephones and public places like theatres offer the audio signal (music and speech) via an audio induction loop. With this system, your hearing instruments can directly receive the desired signal – without distracting noise in the environment.

You can usually recognize audio induction loop systems by certain signs.



Ask your Hearing Care Professional to configure a telecoil program.

- Switch to the telecoil program whenever you are in a place with an audio induction loop.

If a telecoil program is configured for your hearing instruments, it is listed in section "Settings".

## TELECOIL PROGRAM AND REMOTE CONTROL



### NOTICE

For instruments with wireless connectivity: When the telecoil program is active, the remote control may cause a pulsing noise.

- Use the remote control with a distance greater than 10 cm (4 inches).

## MAINTENANCE AND CARE

To prevent damage it is important that you take care of your hearing instruments and follow a few basic rules, which will soon become a part of your daily routine.

### HEARING INSTRUMENTS

#### CLEANING

Your hearing instruments have a protective coating. However, if not cleaned regularly you may damage the hearing instruments or cause personal injury.

- Clean your hearing instruments daily with a soft, dry tissue.
- Never use running water or immerse the devices in water.
- Never apply pressure while cleaning.
- Ask your Hearing Care Professional for recommended cleaning products, special care sets, or more information on how to keep your hearing instruments in good condition.



#### DRYING

Your charger dries the hearing instruments while charging. You can also use conventional products to dry your hearing instruments. Ask your Hearing Care Professional for recommended drying products and for individual instructions on when to dry your hearing instruments.

#### AUFBEWAHREN

- Short-term storage (up to several days): Turn off your hearing instruments via the push button or place them in the powered charger.

The charger must be connected to the power supply. If the charger is not connected to power supply and you place your hearing instruments in the charger, the hearing instruments are **not** turned off.

Note that when you turn off the hearing instruments via a remote control or smartphone app, the hearing instruments are **not** turned off completely. They are in standby-mode and still draw some power.

- Long-term storage (weeks, months, ...): First, fully charge your hearing instruments. Turn them off via the push button before storing them. We recommend using drying products while storing the hearing instruments.

At 6 month intervals you will have to charge the hearing systems to avoid an unrecoverable deep-discharge of the power cell. Deep-discharged power cells cannot be charged anymore and they have to be replaced. We recommend recharging more frequently than 6 month intervals.

Observe the storage conditions in section "Operating, transport and storage conditions".

## EAR PIECES

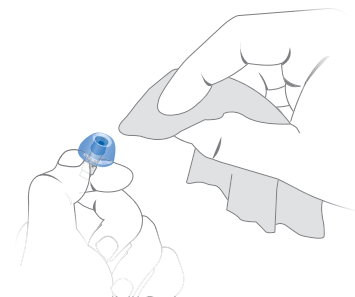
### CLEANING

Cerumen (ear wax) may accumulate on the ear pieces. This may affect sound quality. Clean the ear pieces daily.

For all types of ear pieces:

- Clean the ear piece right after removal with a soft and dry tissue.

This prevents that cerumen becomes dry and hard.



For Click Domes or Click Sleeves:

- Push the tips of the ear pieces together.

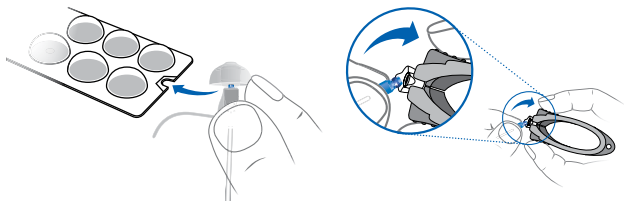


## EXCHANGING

Exchange standard ear pieces approximately every three months. Replace them sooner if you notice cracks or other changes. The procedure for exchanging standard ear pieces depends on the type of ear piece. In section "Components and names", your Hearing Care Professional has marked your type of ear piece.

## EXCHANGING CLICK DOMES

- To remove the old Click Dome, use the removal tool or follow the instructions on the packaging of the Click Domes. Be careful not to pull the receiver cable.



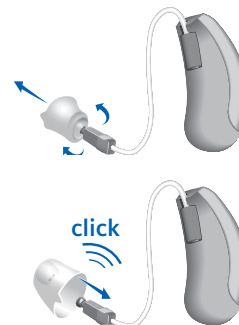
The removal tool is available as an accessory.

- Take particular care that the new Click Dome clicks noticeable in place.
- Check the firm fit of the new Click Dome.



## EXCHANGING CLICK SLEEVES

- Turn the Click Sleeve inside out.
- Hold the Click Sleeve and the receiver (not the receiver cable) tightly with your fingers and pull the Click Sleeve off.
- Take particular care to ensure that the new Click Sleeve clicks noticeably into place.



## PROFESSIONAL MAINTENANCE

Your Hearing Care Professional can perform a thorough professional cleaning and maintenance.

Custom-made ear pieces and wax filters should be exchanged as needed by your Hearing Care Professional.

Ask your Hearing Care Professional for your individual recommendation of maintenance intervals and for support.

## IMPORTANT SAFETY INFORMATION

This section contains important safety information regarding the power cell. For more safety information, refer to the safety manual supplied with the hearing instruments.



### WARNING

A power cell (lithium-ion rechargeable battery) is permanently built into your hearing instrument. Incorrect use of the power cell or the hearing instrument can cause the power cell to burst.

Risk of injury, fire or explosion!

- Follow the safety instructions for power cells in this section.
- Observe the operating conditions. Refer to section "Operating, transport and storage conditions".
- Pay special attention to protect your hearing instruments from extreme heat (e.g. fire, microwave oven, inductive oven or other high-induction fields) and sunlight.
- Charge your hearing instruments only with the approved charger. Ask your Hearing Care Professional for support.
- Do not disassemble the power cell.

Replacement and repair have to be performed by a professional. Therefore:

- Do not repair or replace the power cell yourself.
- Do not use the hearing instruments when their performance after charging reduces considerably.
- In the unlikely event of a power cell bursting or exploding, keep all combustible parts away.

In any of the above cases, return your hearing instruments to the Hearing Care Professional.

## FURTHER INFORMATION

### SAFETY INFORMATION

For more safety information, refer to the safety manual supplied with the device.

### WIRELESS FUNCTIONALITY

Your hearing instruments are equipped with wireless functionality. This provides synchronization between your two hearing instruments:

- If you change the program or volume on one instrument, the other one is automatically changed, too.
- Both hearing instruments automatically adapt to the listening situation simultaneously.

Wireless functionality enables the use of a remote control.

### ACCESSORIES

The type of available accessories depends on the instrument type. Examples are: a remote control, an audio streaming device, or a smartphone app for remote control.

Some hearing instrument types support CROS and BiCROS solutions for people with single-sided deafness.

Consult your Hearing Care Professional for further information.

### OPERATING, TRANSPORT AND STORAGE CONDITIONS

Operating conditions	Discharging	Charging
Temperature	0 to 50 °C	10 to 35 °C
Relative humidity	5 to 93 %	5 to 93 %

During extended periods of transport and storage, please observe the following conditions:

	Storage	Transport
Temperature	0 to 25 °C	-20 to 60 °C
Relative humidity	20 to 80 %	5 to 90 %

Note that you have to charge the hearing instruments at least every 6 months. For details refer to section "Maintenance and care".

For other parts, such as the charger, other conditions may apply.



#### WARNING

Risk of injury, fire or explosion during shipment.

- Ship power cells or hearing instruments according to local regulations.



## DISPOSAL INFORMATION

- To avoid environmental pollution, do not throw power cells or hearing instruments into household trash.
- Recycle or dispose of power cells or hearing instruments according to local regulations.

## SYMBOLS USED IN THIS DOCUMENT



Points out a situation that could lead to serious, moderate, or minor injuries.



Indicates possible property damage.



Advice and tips on how to handle your device better.

## TROUBLESHOOTING

### Problem and possible solutions

Sound is weak.

- Increase the volume.
- Charge the hearing instrument.
- Clean or exchange the ear piece.

Hearing instrument emits whistling sounds.

- Reinsert the ear piece until it fits securely.
- Decrease the volume.
- Clean or exchange the ear piece.

Sound is distorted.

- Decrease the volume.
- Charge the hearing instrument.
- Clean or exchange the ear piece.

Hearing instrument emits signal tones.

- Charge the hearing instrument.

Hearing instrument does not work.

- Turn the hearing instrument on.
- Charge the hearing instrument. Observe also the status LEDs on the charger.

Consult your Hearing Care Professional if you encounter further problems.

## SERVICE AND WARRANTY

Serial numbers	Instrument	Receiver unit
Left:		
Right:		
Service dates		
1:	4:	
2:	5:	
3:	6:	
Warranty		
Date of purchase:		
Warranty period in months:		
Your Hearing Care Professional		

## NOTES

This image shows a single sheet of white paper with horizontal ruling lines. The lines are evenly spaced and run across the width of the page. There are no margins, text, or other markings on the paper.



**AS AUDIO-SERVICE GmbH**

Alter Postweg 190 · 32584 Löhne · Germany

[www.audioservice.com](http://www.audioservice.com)



Art. No. 109 47 584 / V2 · 02.2018 · Subject to technical modifications. Errors excepted.