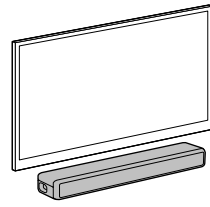


Startup Guide

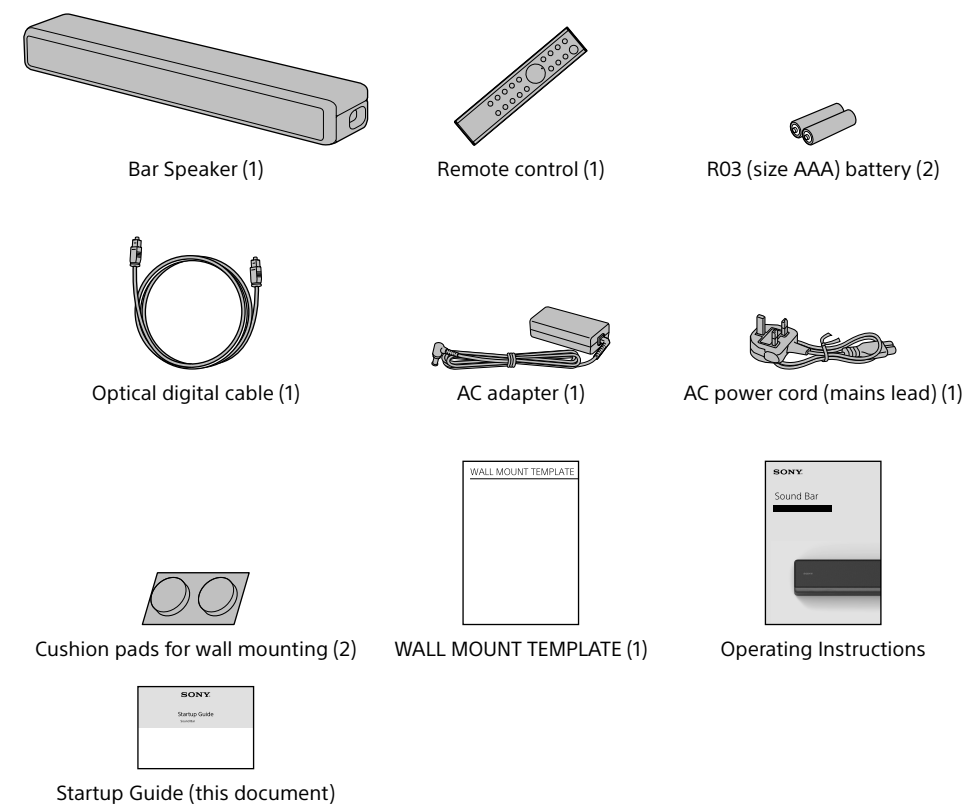
Sound Bar : HT-SF200

Refer to the Operating Instructions (separate document) for the following methods.

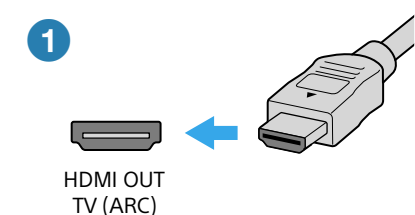
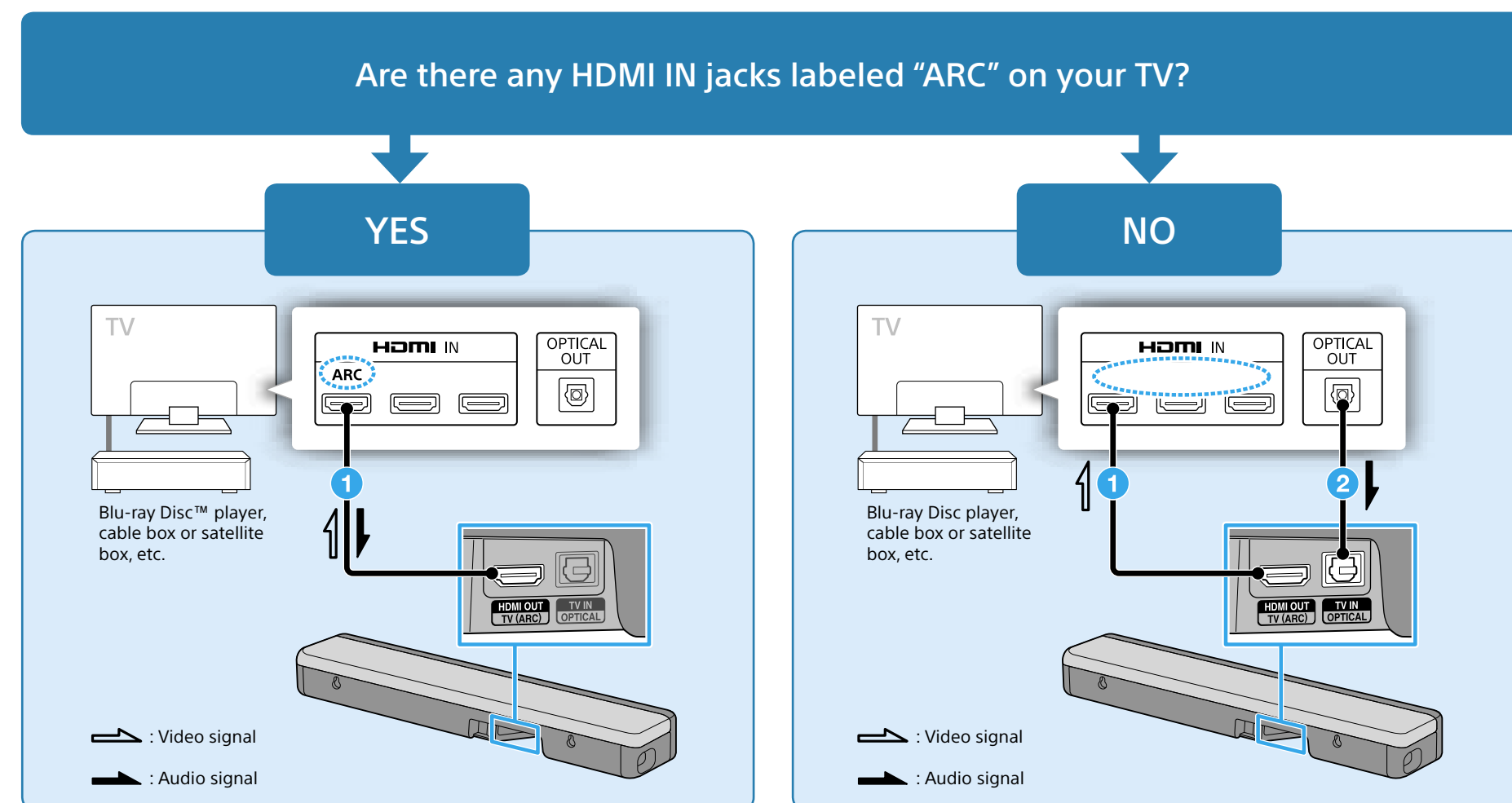
- Mounting the Bar Speaker on a Wall
- Connecting Sony TV with the BLUETOOTH Function Wirelessly



What's in the box



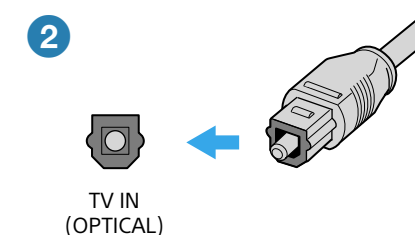
1 Connecting with a TV



Use an HDMI cable (not supplied) to connect an HDMI IN jack on your TV and the HDMI OUT (TV (ARC)) jack on the Bar Speaker. High Speed HDMI Cable with Ethernet is recommended for the HDMI cable.

Note

- Make sure that the cable is firmly inserted.
- When your TV does not have an HDMI IN jack labeled "ARC," you also need to connect the TV and the Bar Speaker via the optical digital cable (supplied) as instructed in step 2. There will be no sound output from the TV if the TV and the Bar Speaker are connected only via the HDMI cable.

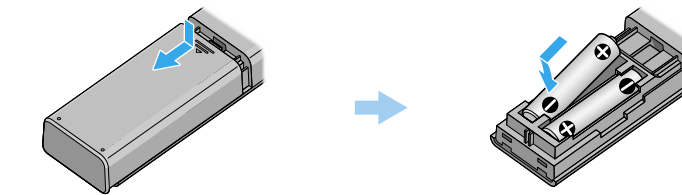


When there is no HDMI IN jack labeled "ARC" on your TV, use the optical digital cable (supplied) to connect an optical out jack on your TV and the TV IN (OPTICAL) jack on the Bar Speaker.

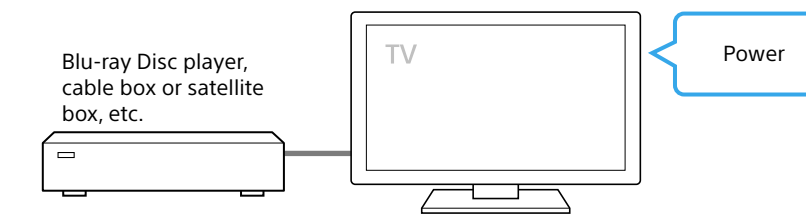
Note

- Check the shape of the optical digital cable's connectors and the jacks on the TV and the Bar Speaker. Insert the connectors into the jacks in the right directions. If you forcibly insert the connectors in the wrong directions, the connectors and the jacks may be damaged.

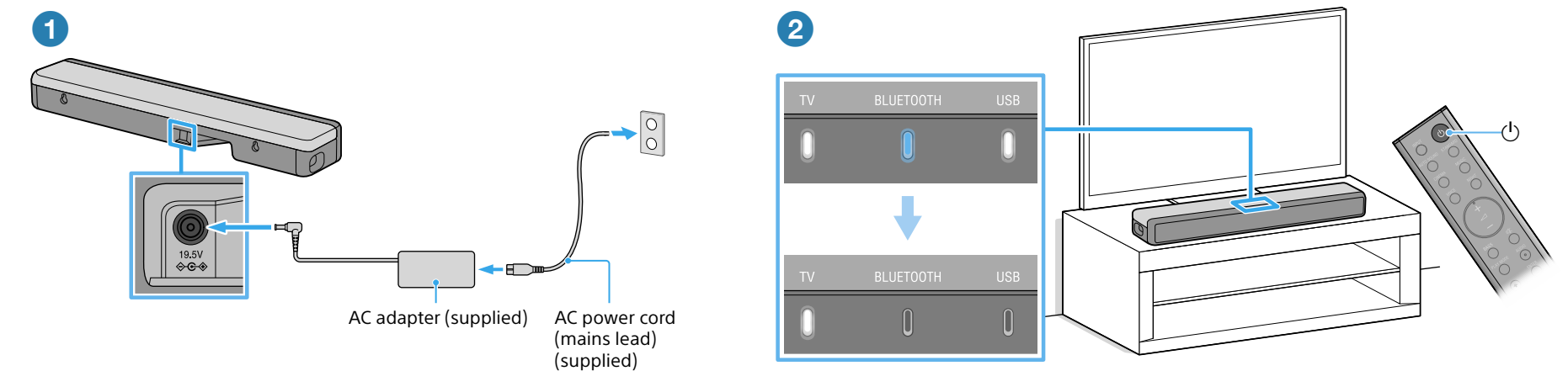
2 Setting up the remote control



3 Turning on the TV



4 Turning on the Bar Speaker



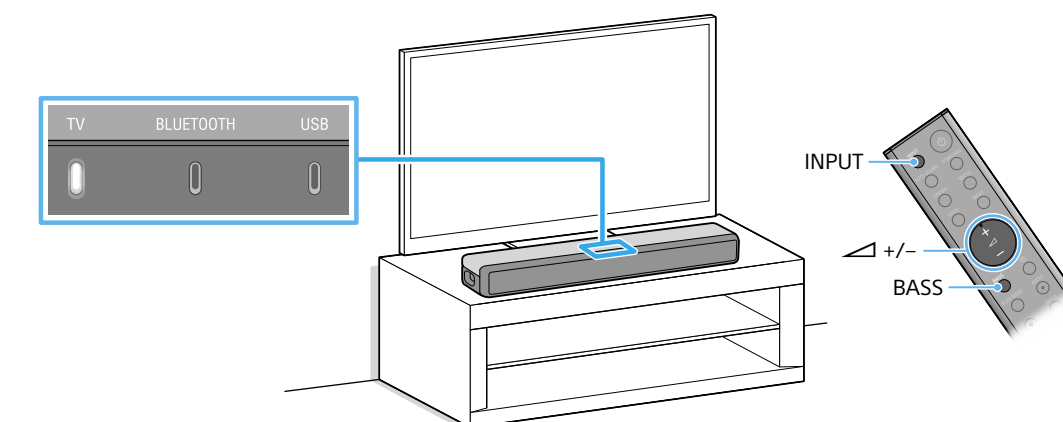
- 1 Connect the AC adapter and AC power cord (mains lead), then connect the plug of the AC adapter to the Bar Speaker until it clicks. Connect the AC power cord (mains lead) to the AC outlet (mains).
- 2 Press (power) on the remote control of the Bar Speaker. After the TV, BLUETOOTH and USB indicators light up in sequence for a few seconds, only the TV indicator lights up.

Note

- Do not place magnetic cards on the Bar Speaker or near the Bar Speaker.

5 Listening to the sound

1/2



- 1 Make sure that the TV indicator on the Bar Speaker lights up. When the TV indicator on the Bar Speaker does not light up, press INPUT on the remote control of the Bar Speaker to select the TV input.
- 2 Adjust the volume by pressing +/- on the remote control of the Bar Speaker. Adjust the level of the bass tone by pressing BASS on the remote control of the Bar Speaker.

Note

- Depending on the order in which you turn on the TV and the Bar Speaker, the Bar Speaker may enter muting mode. In this case, turn on the TV first, then the Bar Speaker.