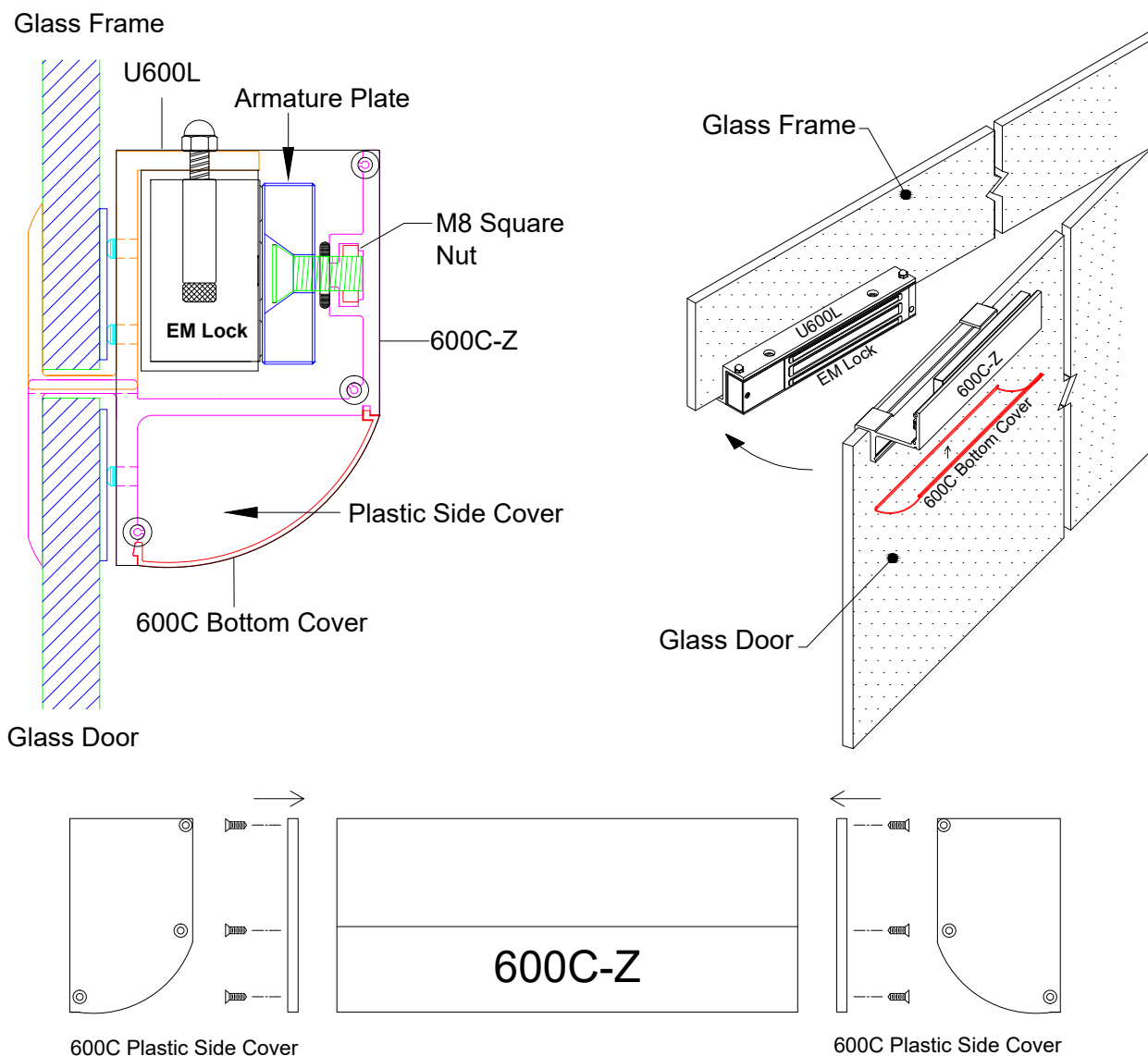




600C-DSU Cover Bracket Installation Guide



General Installation Steps

1. Pre-Align the location of the EM Lock to be fixed on the glass frame
2. Install the U600L on the Glass Door Frame
 - Put in the AL-Plate and U-rubber in between the glass frame
 - Tighten the M4 Set screws
3. Install the EM Lock onto the U600L using Allen key
4. Pre-Align the location of the Armature Plate to be fixed on the glass door
5. Install the 600C-Z on the Glass Door
 - Put in the AL-Plate and U-rubber in between the glass door
 - Tighten the M4 Set screws
6. Install in the Armature Plate by tightening screw M8x16 on the square nut
 - Put in rubber washer for armature plate flexibility
7. Slot in the 600C Bottom Cover into the 600C-Z
8. Install the 600C Plastic Side Cover on Left & Right of the 600C-Z