



FREESTYLE CAR SEAT **INSTRUCTION MANUAL**



This child restraint complies with
ECE regulations for use by children:

- Group 0+ / I / II / III
- Mass: Birth to 36 kg

From birth to 13 kg (Rear-facing, Group 0+)

From 9 kg to 36 kg (Forward-facing, Group I / II / III)

For children approx. 0 - 12 years

READ THIS MANUAL

Do not install or use this child restraint until you read
and understand the instructions in this manual and in
your vehicle owner's manual.

**FAILURE TO PROPERLY USE THIS CHILD RESTRAINT
INCREASES THE RISK OF SERIOUS INJURY OR DEATH IN
A SHARP TURN, SUDDEN STOP OR CRASH.**



**IF YOU HAVE ANY PROBLEMS, PLEASE DO
NOT RETURN THIS PRODUCT TO THE PLACE
OF PURCHASE. PLEASE CONTACT CUSTOMER
SERVICE AT +44 (0) 1704 549881 OR AT
WWW.HARMONYJUVENILE.COM**

TABLE OF CONTENTS

Registration information	3
If you need help.....	4
Warnings	4
General warnings.....	4
Usage warnings	6
Injury warnings.....	7
Vehicle warnings.....	8
Certifications	8
Airbag warnings.....	10
Damage warnings.....	10
Mass and height limitations	11
Rear-facing with built-in harness.....	12
Forward-facing	12
Maximum height	13
Parts list.....	14
Vehicle seating positions	16
Safe vehicle seat belt systems	17
Unsafe vehicle seat belt systems.....	18
Preparing child restraint for use	19
Adjusting headrest and harness shoulder straps.....	19
Rotation	21
Recline	22
Installing child restraint in harness mode: Isofix and	
Top Tether.....	23
Isofix	23
Using Top Tether.....	24
Installing with Isofix system & Top Tether Rear-facing	
Group 0+ (0 - 13 kg).....	24
Disengaging Isofix connectors	26
Installing Forward-facing Group I (9 - 18 kg)	26
Using child restraint with built-in harness.....	29
Securing child in child restraint	29
Removing child from child restraint	31
Using child restraint in booster mode (without built-in harness)....	31
Removing/installing harness	31
Preparing booster seat for use	33
Securing child and booster seat in vehicle	34
Installation - booster seat.....	35
Aircraft installation	37
Instruction manual storage	37
Removing/installing fabric seat cover	37
Care and maintenance	38
Warranty.....	39

REGISTRATION INFORMATION

REGISTER YOUR CHILD RESTRAINT TODAY! Child restraints could be recalled for safety reasons. You must register this restraint to be reached in a recall, and to be eligible to receive replacement parts while under warranty.

The model number, serial number and manufacturing date can be found on a label on the underside of the child restraint.

Visit www.harmonyjuvenile.com/register to register your child restraint online, mail-in the registration card or send your name, address, the restraint's model number, manufacturing date and date of purchase to:

**Harmony Juvenile Products UK
10 Beach Priory Gdns.
Southport, UK
PR8 1RT**

or call: +44 (0) 1704 549881

For recall information, any questions you may have, or to make a change of address or contact information please call Customer Service at +44 (0) 1704 549881 or visit us online at **www.harmonyjuvenile.com**.

**PLEASE DO NOT SEND IN YOUR
REGISTRATION CARD IF YOU HAVE
REGISTERED YOUR RESTRAINT ONLINE.**

IF YOU NEED HELP

Please fill in the information below for future reference. The model number and manufacturing date can be found on a label on the underside of the child restraint.

Model Number: _____

Manufacture Date: _____

Date of Purchase: _____

Our Customer Service Department is standing by to help you with any questions or concerns you may have regarding installation, use, care and/or parts. Please have your product's model number and manufacturing date available when contacting us.

WARNINGS

GENERAL WARNINGS



WARNING!

The safety of your child and the effectiveness of this child restraint depend on:

1. **Selecting a suitable location** for the child restraint in your vehicle.
2. **Properly routing the vehicle seat belt.**
3. **Properly securing both your child and the child restraint in the vehicle.** Many seat belts are **NOT** safe to use with this child restraint. Please review the sections "Safe/Unsafe vehicle seat belt systems" carefully. If in doubt about installing this child restraint, consult the vehicle owner's manual or call the Harmony Customer Service Department.



WARNING!

FAILURE TO PROPERLY READ, FOLLOW AND USE THESE INSTRUCTIONS AND THE CHILD RESTRAINT LABELS INCREASES THE RISK OF SERIOUS INJURY OR DEATH IN A SHARP TURN, SUDDEN STOP OR CRASH. Your child's safety depends on the proper installation and use of this child restraint. Even if this child restraint seems easy to install and use, it is **VERY IMPORTANT** to read and understand these instructions and the vehicle owner's manual.

Follow all labels on this child restraint and in these written instructions. **DO NOT INSTALL OR USE THIS CHILD RESTRAINT UNTIL YOU READ AND UNDERSTAND THE INSTRUCTIONS IN THIS MANUAL AND IN YOUR VEHICLE OWNER'S MANUAL.**

NO CHILD RESTRAINT CAN GUARANTEE PROTECTION WHEN THE VEHICLE IS SERIOUSLY IMPACTED. However, when correctly installed, a child restraint will substantially improve the chances for survival and reduce the risk of serious injury in most crashes.

Carefully follow the instructions in this manual and in your vehicle owner's manual. If there is a discrepancy between the two, the vehicle owner's manual must take precedence with regards to seat belts and/or airbags.

- ! DO NOT** allow children to play with this child restraint.
- ! NEVER** leave children alone in a vehicle under any circumstance.
- !** It is recommended that children are not left in their child restraint system unattended.
- !** Set a good example by **ALWAYS** wearing your seat belt. Make it a firm rule that the vehicle does not move until everyone is buckled up. **MAKE NO EXCEPTIONS.**

- ! Harmony Juvenile Products advises against loaning or passing along a child restraint. **DO NOT USE A SECOND-HAND CHILD RESTRAINT** or a child restraint whose history you do not know.
- ! When disposing a child restraint system, ensure to dispose of the unit in a way others cannot reuse it (e.g. use a dark trash bag, do not sell to a thrift shop or in a garage sale, etc.).
- ! Store the child restraint in a safe place when not in use. **DO NOT** place heavy objects on top of the child restraint while in storage.
- ! **DO NOT** remove any stickers or warnings as they contain important information.

USAGE WARNINGS



WARNING!

- ! **ALWAYS** ASSIST YOUR CHILD WHEN GETTING INTO AND OUT OF THE CHILD RESTRAINT.
- ! **ENSURE** THAT THE CHILD RESTRAINT IS LEVEL, STABLE AND DOES NOT ROCK SIDE-TO-SIDE. IF THE CHILD RESTRAINT IS NOT STABLE, TRY ANOTHER SEATING LOCATION.
- ! **DO NOT ADD ANYTHING BEHIND OR UNDER THE CHILD RESTRAINT.**

According to accident statistics, **CHILDREN ARE SAFER WHEN PROPERLY RESTRAINED IN THE REAR SEATING POSITIONS THAN IN THE FRONT SEATING POSITION.**

Please study the section “Vehicle seating positions”.

- ! **DO NOT** use any load bearing contact points other than those described in the instructions and marked in the child restraint.
- ! **DO NOT** allow others to install or use this child restraint unless they read and understand all the instructions and labels.

! DO NOT GIVE THIS CHILD RESTRAINT to someone else without also giving them this instruction manual. Additional instruction manuals can be downloaded directly from www.harmonyjuvenile.com.

! To ensure proper child restraint use, keep and store this instruction manual and refer to it when necessary.

! DO NOT LEAVE A CHILD RESTRAINT UNSECURED IN YOUR VEHICLE. In a collision, sharp turn or sudden stop, an unsecured child restraint can injure other occupants. Remove it or make sure that it is securely attached with the vehicle seat belt, even when not in use.

INJURY WARNINGS

! INJURIES MAY OCCUR EVEN IF YOU ARE NOT IN A CRASH if the child restraint is not properly installed or if your child is not properly secured in the child restraint.

! The rigid items and plastic parts of a child restraint shall be so located and installed that they are not liable, during everyday use of the vehicle, to become trapped by a movable seat or in a door of the vehicle.

! DO NOT leave folding vehicle seats unlatched. In the event of a sharp turn, sudden stop or crash, a loose seat back could prevent the child restraint from protecting the child as well as it should.

! It is recommended that any luggage or other objects liable to cause injuries in the event of a collision shall be properly secured. In the event of a sharp turn, sudden stop or crash, loose objects will keep moving, potentially causing serious injuries.

! The child restraint shall not be used without the cover. It **MUST** always be used with the fabric cover provided by the manufacturer.

! The seat cover should not be replaced with any other than the one recommended by the manufacturer, because the cover constitutes an integral part of the restraint performance.

! **PARTS OF THE CHILD RESTRAINT COULD BECOME HOT ENOUGH TO BURN THE CHILD IF LEFT IN THE SUN.** Contact with these parts can injure your child. **ALWAYS** touch the surface of any metal or plastic parts before putting your child in the child restraint. Cover the child restraint with a towel or blanket when the vehicle is parked in direct sunlight. **KEEP AWAY FROM SUNLIGHT, OTHERWISE IT MAY BE TOO HOT FOR THE CHILD'S SKIN.**

VEHICLE WARNINGS

! **DO NOT** use this child restraint with unsafe vehicle seat belts listed in section "Unsafe vehicle seat belt systems" of this manual.

! **DO NOT** use this child restraint if it can't be properly installed. It is possible that your vehicle has no suitable seating position for this child restraint due to seat belt type, airbag system and/or lack of location of a tether strap anchor. Read and follow these instructions, and your vehicle owner's manual carefully.

CERTIFICATIONS

This is a "Universal" child restraint. It is approved to UN ECE regulation 44, 04 series of amendments, for general use in vehicles and it will fit most, but not all, car seats.

A correct fit is likely if the vehicle manufacturer has declared in the vehicle handbook that the vehicle is capable of accepting a "Universal" child restraint for this age group.

This child restraint has been classified as "Universal" under more stringent conditions than those which applied to earlier designs which do not carry this notice.

If in doubt, please consult the child restraint manufacturer or the retailer.

For Installation with ISOFIX (ISOFIX attachments and top tether):

This is an ISOFIX CHILD RESTRAINT SYSTEM. It is approved to Regulation No. 44, 04 series of amendments for general use in vehicles fitted with ISOFIX anchorages systems. It is suitable for fixing into the seat positions of most cars.

It will fit vehicles with positions approved as ISOFIX positions (as detailed in the vehicle handbook), depending on the category of the child restraint and of the fixture.

Seat positions in other cars may also be suitable to accept the child restraint. If in doubt, consult either the child restraint manufacturer or vehicle manufacturer.

The mass group and the ISOFIX size class for which this device is intended is ISOFIX size class E for Group 0+ rear-facing.

This child restraint is classified for “Semi-Universal” use when installed using the Isofix connectors in conjunction with the 3-point vehicle seat belt (certain models only) and is suitable for fixing into the seat positions of the following cars:

CAR (Model)	FRONT		REAR	
	Outer	Centre	Outer	Centre
	No	No	Yes	No
Refer to www.harmonyjuvenile.com/uk/resources				

Seat positions in other cars may also be suitable to accept this child restraint. If in doubt, consult either the child restraint manufacturer or the retailer.

! Only suitable for use in the listed vehicles fitted with 3-point with retractor safety-belts, approved to ECE Regulation No. 16 or other equivalent standards.

This restraint is **NOT CERTIFIED** for aircraft use.

This child restraint must **NOT** be used in homes, boats, buses, motorcycles, motor homes, or any other vehicles that have non-forward-facing seats, missing seat belts, or whose seat belts do not meet the requirements of this child restraint.

AIRBAG WARNINGS

! NEVER PLACE THIS CHILD RESTRAINT IN A VEHICLE SEATING LOCATION THAT HAS AN ACTIVE FRONTAL AIRBAG. An inflating airbag may cause serious injury or death. Refer to your vehicle owner's manual for information about airbags and child restraint installation.

This child restraint may be used in a rear seating position equipped with side impact airbags providing they are:

- Roof mounted;
- "Curtain" type deployment;
- Will **NOT** interfere with, impact or in any way reposition the child restraint when inflated.

! If a vehicle's front seat location must be used, **ALWAYS** disable the airbag. Failure to disable the airbag system can result in serious injury or death. Follow the vehicle owner's manual for instructions on disabling the front airbag system.

Please refer to your vehicle owner's manual for airbag type, and for appropriate use with child restraints.

DAMAGE WARNINGS

! It is recommended that the device should be changed when it has been subject to violent stresses in an accident.

! DO NOT USE A CHILD RESTRAINT THAT HAS BEEN IN AN ACCIDENT OF ANY KIND. An accident can cause damage to the child restraint that you cannot see.

! DO NOT use this child restraint if it is damaged in any way or has missing parts.

- ! **NEVER** use a cut, frayed or damaged vehicle seat belt or harness.
- ! **DO NOT** tamper with or modify the child restraint, for any reason. Any unauthorised or additions to the device without the approval of the Type Approval Authority can cause serious injury or death in a sharp turn, sudden stop, or crash.
- ! **DO NOT** use anything to raise the child restraint off the vehicle seat. Untested modifications, such as adding extra padding, could affect the safety of the child restraint and result in serious injury or death in a crash.
- ! **DO NOT, EXCEPT AS DESCRIBED IN THESE INSTRUCTIONS, MODIFY YOUR CHILD RESTRAINT, DISASSEMBLE ANY PART OR CHANGE THE WAY THE VEHICLE SEAT BELTS ARE USED.** This includes any accessories or parts by other manufacturers as non-tested accessories can affect the safety of the child restraint.

MASS AND HEIGHT LIMITATIONS



WARNING!

THIS CHILD RESTRAINT HAS DIFFERENCES IN INSTALLATION AND USAGE DEPENDING ON THE WEIGHT AND HEIGHT OF YOUR CHILD. FAILURE TO USE THIS CHILD RESTRAINT WITHIN THESE GUIDELINES MAY INCREASE THE RISK OF SERIOUS INJURY OR DEATH.

- ! **WARNING:** Verify your child's height and weight frequently. **DO NOT** guess before choosing the proper setup for your child.

Harmony Juvenile Products recommends that you **ALWAYS** confirm country laws with local authorities. Laws can vary from country to country regarding minimum/maximum child restraint requirements for age, mass and height.

REAR-FACING WITH BUILT-IN HARNESS

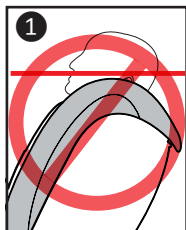
To use this child restraint, your child **MUST MEET ALL** of the following requirements:

- **GROUP 0+**

**Rear-facing
(with built-in harness):**

between 0 - 13 kg
(0 - 28.7 lbs.)

- Child's ears **MUST BE BELOW** top of the headrest. If tops of ears are above the top of the headrest ①, the child is too large for the child restraint.



! WARNING: **DO NOT** use this child restraint forward-facing until the child has reached a minimum of 9 kg.

FORWARD-FACING

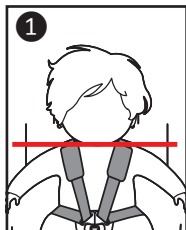
To use this child restraint, your child **MUST MEET ALL** of the following requirements:

- **GROUP I**

**Forward-facing
(with built-in harness):**

between 9 - 18 kg
(19.8 - 39.7 lbs.)

- Shoulders are **BELOW** top harness slots ①.
- Child's ears **MUST BE BELOW** top of the headrest ②. If tops of ears are above the top of the headrest, the child is too large for the child restraint.

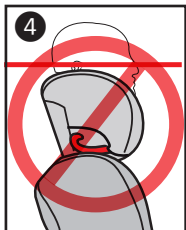


- **GROUP II / III**
Forward-facing
(without built-in harness):
between 15 - 36 kg
(33 - 79 lbs.)

- Shoulder belt **MUST** lie across the **MIDDLE** of the child's shoulder and chest, and lap portion **MUST** be positioned low across child's hips **3**.



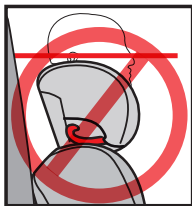
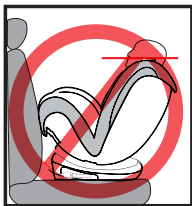
- Child's ears **MUST BE BELOW** top of booster seat headrest at its maximum height. If tops of ears are above the top of the headrest at its maximum height, the child is too large for the booster seat **4**.



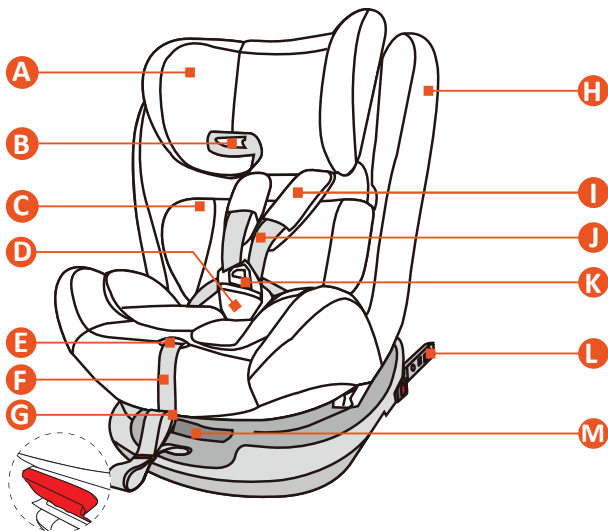
MAXIMUM HEIGHT

WARNING!

Child is too tall when top of ears (mid-point of child's head) are above the top of the child restraint/booster seat headrest at its maximum height.



PARTS LIST



- A. Headrest
- B. Shoulder Belt Positioning Guides
- C. Infant Insert Cushion
- D. Crotch Strap and Pad
- E. Metal Up-front Harness Adjustment Button (under fabric)
- F. Up-front Harness Adjustment Strap
- G. Recline Handle

- H. Backrest
- I. Shoulder Pads
- J. Harness Straps
- K. Buckle
- L. Isofix Connectors
- M. Rotation Adjuster
- N. Isofix Insert Guides
- O. Locking Clip

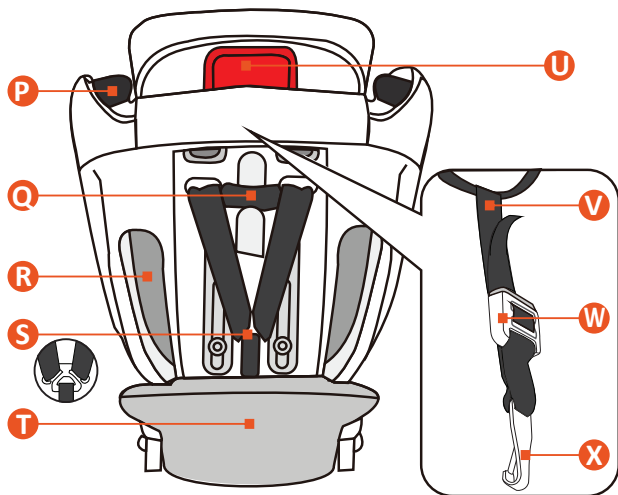


N



O

PARTS LIST



- P. Backrest Belt Guides
- Q. Harness Strap Connector
- R. Backrest Belt Slot Opening
- S. Harness Splitter Plate
- T. Base

- U. Headrest Height Adjuster
- V. Top Tether Strap
- W. Top Tether Adjuster
- X. Top Tether Hook

TO PURCHASE REPLACEMENT PARTS:

In the United Kingdom, please contact us at
www.harmonyjuvenile.com
or by calling +44 (0) 1704 549881.



IF YOU HAVE ANY PROBLEMS, PLEASE DO NOT RETURN THIS PRODUCT TO THE PLACE OF PURCHASE. PLEASE CONTACT CUSTOMER SERVICE AT +44 (0) 1704 549881 OR AT WWW.HARMONYJUVENILE.COM

VEHICLE SEATING POSITIONS

WARNING!

FAILURE TO PROPERLY SECURE YOUR CHILD AND THE CHILD RESTRAINT IN YOUR VEHICLE INCREASES THE RISK OF SERIOUS INJURY OR DEATH IN THE EVENT OF A SHARP TURN, SUDDEN STOP OR CRASH.

WARNING!

IMPROPER PLACEMENT OF THE CHILD RESTRAINT INCREASES THE RISK OF SERIOUS INJURY OR DEATH.

Some seating positions in your vehicle may **NOT** be safe for this child restraint. Some vehicles have **NO** seating positions which are compatible with this child restraint due to seating surface, seat belt type and/or airbag system. Read and follow these instructions, and your vehicle owner's manual carefully.

WARNING!

Children aged 13 and under **MUST** ride in the rear seats, away from front airbags. The only exception is if the airbags are turned off. When using a child restraint in a vehicle with active airbags, refer to the vehicle owner's manual for additional installation instructions and precautions. For rear seat installation, adjust the front seat forward enough to ensure the child's feet do not hit the backrest of the front seat.



WARNING!

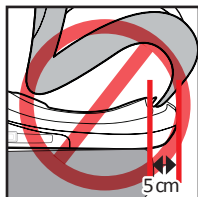
Only use this child restraint in forward-facing vehicle seats. Side-facing or rear-facing seats in vans, station wagons or trucks **CANNOT** be used.

THE VEHICLE SEAT MUST FACE FORWARD. DO NOT use the child restraint with the following vehicle seats:

- Seats which face sides of vehicle.
- Seats which face rear of vehicle.
- Rear seats of small extended cab pickup trucks.



- The front of the child restraint **MUST NOT** hang over the edge of the vehicle seat by more than 5 cm (2 inches).



Refer to the vehicle owner's manual for child restraint installation instructions for your specific vehicle.

! DO NOT use this child restraint in a seating position where the vehicle seat belt or seat belt buckle is not easily accessible with the child restraint secured in place.

SAFE VEHICLE SEAT BELT SYSTEMS



WARNING!

SEAT BELTS DIFFER FROM VEHICLE TO VEHICLE AND FROM SEATING LOCATION TO SEATING LOCATION WITHIN THE SAME VEHICLE. NOT ALL VEHICLE SEAT BELTS CAN BE USED WITH THIS CHILD RESTRAINT.

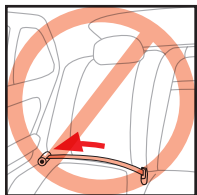
You must determine if your vehicle's seat belts are compatible for use with this child restraint. If you are unsure, consult your vehicle owner's manual or call Harmony Juvenile Products.

! This child restraint is suitable for use in the listed vehicles fitted with 3-point with retractor safety-belts (lap-and-shoulder), approved to ECE Regulation No. 16 or other equivalent standards.

Review your vehicle owner's manual for vehicle seat belt use with child restraints.

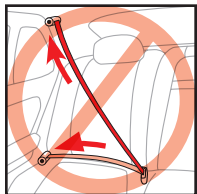
UNSAFE VEHICLE SEAT BELT SYSTEMS

This child restraint can be installed properly using **MOST** vehicle 3-point lap-and-shoulder seat belts. However, some vehicle seat belts are not safe to use as their anchoring points for the lap belt may not allow for a secure installation. **NEVER** use any unsafe vehicle seat belt systems.



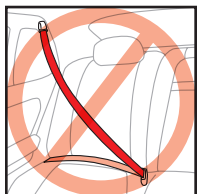
DO NOT USE ANY OF THE FOLLOWING VEHICLE SEAT BELT SYSTEMS WITH THIS CHILD RESTRAINT:

! NEVER use a lap-only belt.



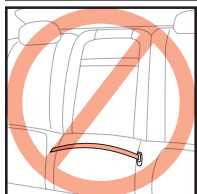
! NEVER use a seat belt that does not lock in the event of a sharp turn, sudden stop, or crash.

! NEVER use a cut, frayed or damaged vehicle seat belt.



! NEVER use motor driven automatic seat belts.

! NEVER use a vehicle seat belt system where the lap and shoulder belts have independent retractors.



! NEVER use a vehicle seat belt system with top or bottom anchorage points attached to the door in any way.

! NEVER use lap belts whose anchor points are forward of the seat crease.

PREPARING CHILD RESTRAINT FOR USE

WARNING!

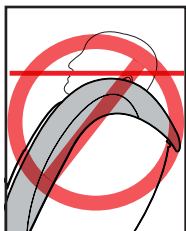
INCORRECT USE OF THE HARNESS SYSTEM IS THE MOST COMMON MISTAKE PEOPLE MAKE. IT IS VERY IMPORTANT TO READ, UNDERSTAND AND FOLLOW ALL INSTRUCTIONS AND WARNINGS. DO NOT MISTAKE COMFORT FOR SAFETY. THE HARNESS SYSTEM MUST BE SNUGLY ADJUSTED AT ALL TIMES.

! WARNING: When used rear-facing, the shoulder harness must be **EVEN OR SLIGHTLY BELOW** the child's shoulders.

! WARNING: When used forward-facing, the shoulder harness must be **EVEN OR SLIGHTLY ABOVE** the child's shoulders. If the upper most harness position is below the child's shoulders, **DO NOT** use this child restraint.

! ENSURE the harness height is correct for your child's size. **VERIFY OFTEN.**

! WARNING: DO NOT use this child restraint if the midpoint of your child's head is above the top of the child restraint.



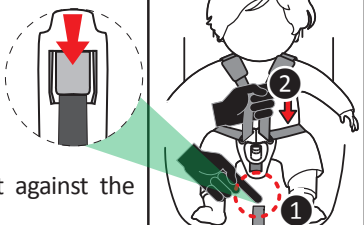
ADJUSTING HEADREST AND HARNESS SHOULDER STRAPS

1. Loosen harness system by pushing the up-front metal harness adjuster at the front of the seat just above the adjustment strap (**UNDER THE FABRIC**) ① and by simultaneously pulling the chest straps towards you ②.

TIP: PULL ON THE HARNESS STRAPS. DO NOT PULL

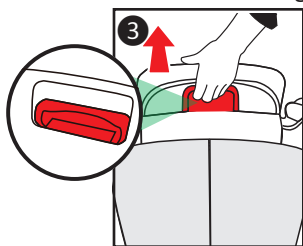
ON THE HARNESS PADS AS THEY ARE LOCKED IN PLACE.

2. To determine what harness height is appropriate for your child, place your child in the child restraint with their back flat against the backrest.



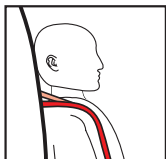
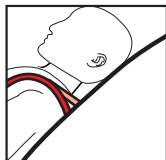
3. Your child restraint has eleven (11) height adjustments:

- Use one hand to squeeze the headrest height adjustment handle found on the rear of the headrest **3** while simultaneously pulling the headrest up or down to the desired height with the other hand **4**.



Adjust headrest height so that:

- When **REAR-FACING**, the harness straps **MUST** be in the height position **EVEN** with or just **BELOW** the shoulders.
- When **FORWARD-FACING**, the harness straps **MUST** be in the height position **EVEN** with or just **ABOVE** the shoulders.



REMEMBER to check the shoulder straps position frequently and move them to the next position when necessary.

The shoulder pads and crotch pads are optional and are not a safety feature.

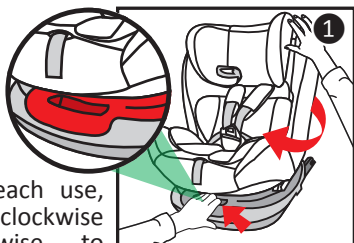


WARNING!

FAILURE TO ADJUST THE HARNESS STRAPS CORRECTLY COULD RESULT IN SERIOUS INJURY OR DEATH.

ROTATION

Pull the rotation adjuster located on the front of the base towards you to safely rotate the seat ①.



! WARNING: Before each use, try to rotate the seat clockwise and counter-clockwise to ensure the seat position is securely locked in place.

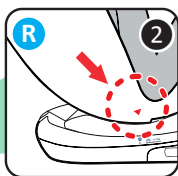
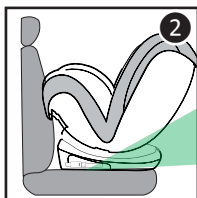
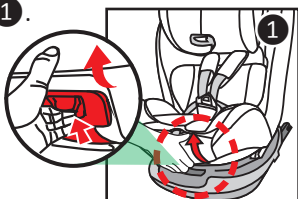
! WARNING: ENSURE seat is fully locked into place **BEFORE** each use.

THE ROTATION FEATURE IS DESIGNED TO AID IN MOVING THE SEAT FROM REAR-FACING TO FORWARD-FACING EASILY, BUT MIGHT REQUIRE LOOSENING THE INSTALLATION FOR EASY ROTATION DEPENDING ON THE VEHICLE SEAT SHAPE AND DESIGN.

RECLINE

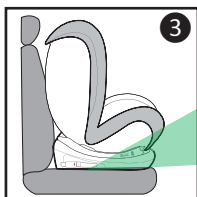
Place the child restraint in the desired seating position (see “Choosing an appropriate vehicle seat location”). Lift the recline handle found underneath the front of the seat and adjust the base to the desired angle. Release the handle when done and gently push on the seat to ensure it is firmly locked in place. An audible ‘click’ will ensure it is locked in place ①.

WHEN INSTALLING THE SEAT REAR-FACING, THE SEAT MUST BE ROTATED TO THE REAR-FACING POSITION, AND FULLY RECLINED TO POSITION #5 WITH THE BLUE R ②.



WHEN INSTALLING THE SEAT FORWARD-FACING, THE SEAT MUST BE ROTATED TO THE FORWARD-FACING POSITION, AND BE ADJUSTED IN POSITIONS #1 - #4 WITH THE RED ① ② ③ ④ ③.

PLEASE USE THE RECLINE THAT ALLOWS FOR THE BEST AND TIGHTEST INSTALLATION.



INSTALLING CHILD RESTRAINT IN HARNESS MODE: ISOFIX AND TOP TETHER

Isofix is used for installing the child restraint **IN CONJUNCTION WITH** the use of the Top Tether.

! Isofix connectors can **ONLY** be used if your vehicle has the Isofix anchors installed and designated Isofix seating positions. Check your vehicle owner's manual to see which seating positions may be suitable with Isofix.

If an Isofix installation is not an option, then the Isofix option can **NOT** be used in your vehicle. Use the belt-only installation method.

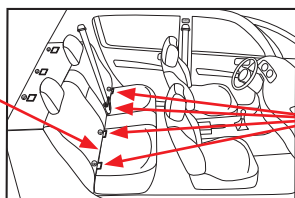
ISOFIX

If your vehicle is equipped with Isofix anchors, the vehicle Isofix anchorage points may be visible at the seat crease. If not visible, they may be marked with this symbol.



Check your vehicle owner's manual for your vehicle's exact Isofix locations, anchor identifications and usage requirements for use with a child restraint.

Vehicle
seat crease



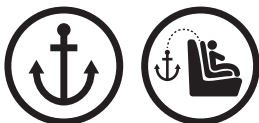
Isofix
anchor
points



! WARNING: CONSULT YOUR VEHICLE OWNER'S MANUAL FOR THE EXACT PLACEMENT OF THESE ELEMENTS IN YOUR VEHICLE, AND FOR MAXIMUM ISOFIX WEIGHT ALLOWANCES PRIOR TO INSTALLATION AS SOME MANUFACTURERS HAVE LOWER MAXIMUM WEIGHT ALLOWANCES FOR ISOFIX USAGE.

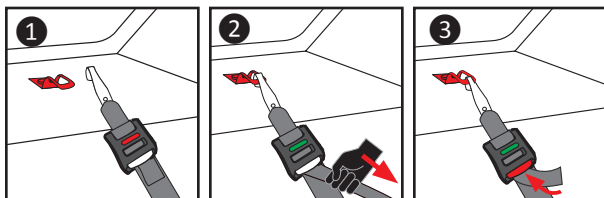
USING TOP TETHER

Your vehicle's Top Tether Anchor Points may be identified using one of these symbols:



- Check that the Top Tether is securely attached to the child restraint.
- Fasten Top Tether clip to anchor point ensuring the clip is facing downwards and the strap is not twisted **1**.
- With the child restraint installed with the Isofix or vehicle seat belt, tighten the Top Tether strap securely by pulling on the free end of the Top Tether strap **2**.
- To loosen, press the Top Tether release button **3**.

! WARNING: Ensure that Top Tether strap is **NOT** twisted.



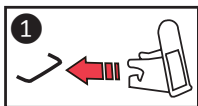
INSTALLING WITH ISOFIX SYSTEM & TOP TETHER REAR-FACING GROUP 0+ (0 - 13 KG)

! MAKE SURE THE CHILD RESTRAINT IS IN THE MOST RECLINED POSITION **R (SEE "RECLINE").**

! WHEN YOUR CHILD REACHES 13 KG, REMOVE THE INFANT INSERT CUSHION AND BODY INSERT CUSHION.

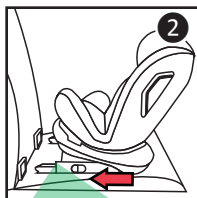
1. Install Isofix insert guides **1**:

With the guides facing upwards, push plastic casing into the Isofix anchors.



2. Identify the Isofix connectors located at the rear of the seat base.

3. Press the Isofix Release Button on each Isofix arm to release the two Isofix arms for installation.



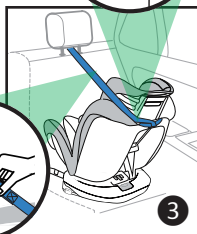
4. Place the child restraint flush against a forward-facing vehicle seat, centered between the Isofix anchors. The child restraint must be level, stable and not rock side-to-side (see "Vehicle seating positions").



5. Gently guide the Isofix connectors against the anchors, engaging the Isofix connectors. An audible "click" will be heard when engaged and the indicator window will turn **GREEN** 2.



6. Secure the top of the child restraint using the Top Tether strap 3 by fastening the Top Tether clip to the anchor point available in your vehicle as shown 4 (see "Using Top Tether").



You will be able to rotate the seat 90° towards you with the Top Tether installed. If rotation is difficult, loosen Isofix connectors to rotate. Reinstall before use.

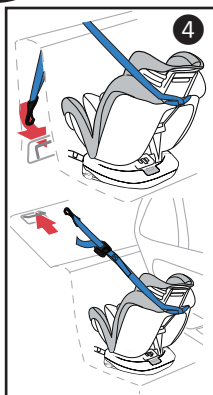


! WARNING: Rear-facing cars seats must be properly levelled:

- Too reclined can result in injury;
- Too upright can result in breathing difficulties.

! ENSURE that your infant is resting in the car seat in a way where their head cannot fall forward easily on its own.

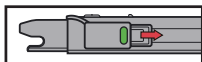
! ENSURE that your infant's bottom and back are flat against the child restraint and that your infant does **NOT** slouch.



DISENGAGING ISOFIX CONNECTORS

To release the Isofix connectors:

Press the Isofix Release Button on each side of the Isofix connectors.

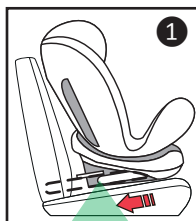


INSTALLING FORWARD-FACING GROUP I (9 - 18 KG)

IF YOUR CHILD HAS REACHED 9 KG, YOU CAN USE THE SEAT IN THE FORWARD-FACING POSITION.

! MAKE SURE THE CHILD RESTRAINT IS IN RECLINE POSITIONS ① ② ③ ④ (SEE "RECLINE").

1. **ISOFIX INSTALLATION:** Locate the Isofix connectors underneath the rear of the seat backrest. Gently guide the Isofix connectors against the anchors, engaging the Isofix connectors. An audible "click" will be heard when engaged and the indicator window will turn **GREEN** ①.



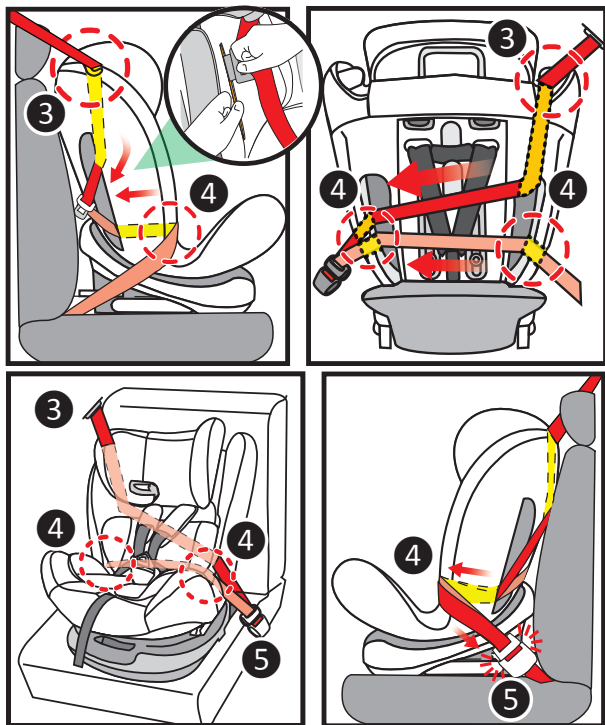
2. Place the child restraint flush against a forward-facing vehicle seat ②. The vehicle seat **MUST** be equipped with a 3-point lap-and-shoulder belt. The child restraint must be level, stable and not rock side-to-side (see "Vehicle seating positions").



3. Thread the vehicle shoulder belt portion of the seat belt behind the headrest **ON THE SAME SIDE** as the seat belt retractor ③.



4. Open harness system and lift insert cushion. Thread the lap portion of the vehicle's seat belt through the red belt base positioning guide **ON THE SAME SIDE** as the seat



belt retractor. Replace insert cushion.

5. From **BEHIND** the child restraint, pass both the lap and shoulder portions around the rear of the seat and back through the opening on the opposite side of the seat as indicated ④. Take both portions of the vehicle seat belt and guide them over the side of the child restraint.
6. Buckle the vehicle seat belt. Listen for an audible “click” ⑤. The vehicle seat belt **MUST NOT** be twisted.
7. If your vehicle is equipped with a ELR/ALR switchable seat belt retractor system, we recommend that you pull out the full length of the vehicle seat belt (until you cannot pull out any more slack). This locks the

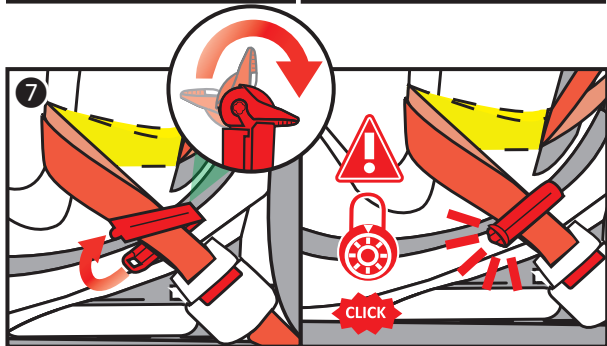
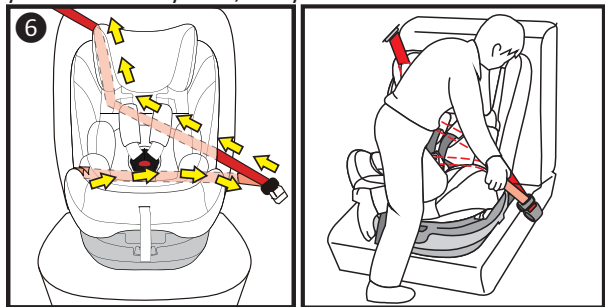
retractor. If not equipped with switchable ELR/ALR retractor, continue with step #8.

8. Tighten vehicle seat belt by placing your knee on the child restraint base and by using your full weight to push the child restraint down as you simultaneously release the extra belt length until seat belt is taught and has no slack **6**. Manually pull out of all of the slack from the **LAP PORTION** and then feed the shoulder portion back into the retractor.

9. Attach the locking clip around both lap and shoulder belts once vehicle seat belt is adjusted and tightened **7**.

You will not be able to rotate the seat with the vehicle seat belt installed.

For more information on how to tighten the seat belt for your seat belt system, see your vehicle owner's manual.



USING CHILD RESTRAINT WITH BUILT-IN HARNESS

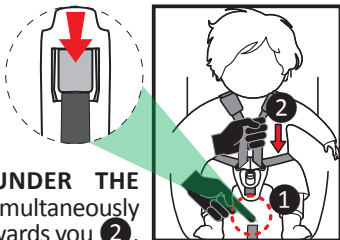
WARNING!

FAILURE TO FASTEN AND TIGHTEN THE HARNESS SYSTEM CORRECTLY MAY CAUSE THE CHILD TO BE EJECTED FROM THE RESTRAINT SYSTEM IN CASE OF A SHARP TURN, SUDDEN STOP OR CRASH CAUSING SERIOUS INJURY OR DEATH. In a crash, the child restraint will provide **NO** protection for your child unless the harness straps are properly secured. **DO NOT** mistake comfort for safety. Harness system **MUST** be snugly adjusted. Follow these instructions carefully.

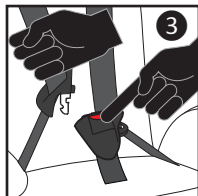
- ! Incorrect use of the harness system is the most common mistake people make. It is **VERY** important to read, understand and follow **ALL** instructions and warnings. **DO NOT** mistake comfort for safety. The harness system **MUST** be snugly adjusted at all times.
- ! Snugly adjust the harness provided with this child restraint around your child. A snug strap is one with no slack. It should not press on the child's flesh or cause your child's body to be in an unnatural position. You should only be able to slide **ONE FINGER** between the shoulder straps and the child's shoulder.
- ! Avoid unnecessary bulky clothing.

SECURING CHILD IN CHILD RESTRAINT

1. To loosen the harness strap: Push the up-front metal harness adjuster at the front of the seat just **ABOVE** the adjustment strap (**UNDER THE FABRIC**) ① and simultaneously pull the chest strap towards you ②.



TIP: PULL ON THE HARNESS STRAPS. DO NOT PULL ON THE HARNESS PADS AS THEY ARE LOCKED IN PLACE.

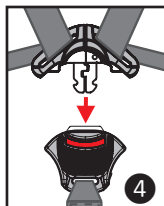
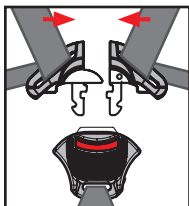


2. Unbuckle harness straps by pressing on the **RED** buckle release button and by pulling the buckle clips out **3**. Move harness straps to the side.

3. Place child in child restraint with child's back flat against back of the backrest.

4. Adjust headrest height (see "Adjusting headrest and harness shoulder straps").

5. Place harness straps over child's shoulders. Hold the two buckle clips together and insert the two-piece buckle clip into buckle until they 'click' into place **4**.



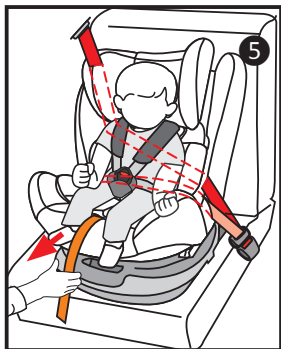
! ENSURE that the buckle is properly fastened by gently tugging on it.

! ENSURE that the straps are **NOT** twisted.

! DO NOT use child restraint if harness does not lock.

6. Tighten harness system by gently pulling on the up-front harness adjuster strap until all slack is removed from the system **5**.

! ENSURE straps are flat and snug against child's shoulders and thighs. You should **NOT** be able to slide more than one finger between the strap and the child's shoulder **6**.



A snug strap should not allow any slack. It lies in a relatively straight line without sagging. It should not press the child's flesh or cause your child's body to be in an unnatural position.



! Any straps holding the restraint to the vehicle should be tight, any straps restraining the child should be adjusted to the child's body, and all straps should not be twisted.

REMOVING CHILD FROM CHILD RESTRAINT

1. Loosen the harness system by pressing on the up-front metal harness adjuster (**UNDER THE FABRIC**), and simultaneously pulling the shoulder straps towards you.
2. Unbuckle harness by pressing on the **RED** buckle release button.

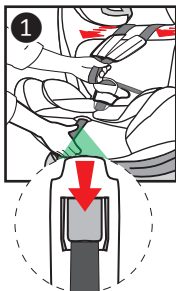
USING CHILD RESTRAINT IN BOOSTER MODE (WITHOUT BUILT-IN HARNESS)

REMOVING/INSTALLING HARNESS

IF YOUR CHILD HAS REACHED 15 KG, YOU CAN USE THE SEAT IN BOOSTER MODE.

Harmony Juvenile Products advises that your child remains in a 5-point harness for as long as possible per the mass and height requirements of the child restraint.

1. Keep the harness buckled. Loosen the harness system by pressing on the up-front metal harness adjuster (**UNDER THE FABRIC**), and simultaneously pulling the shoulder straps towards you **1**.
2. **To remove the harness pads:** Undo the snaps on each harness pad and remove. Set aside.



3. Tuck harness straps and clips behind backrest fabric cover **2**.

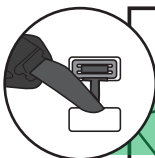


4. To remove the crotch buckle:

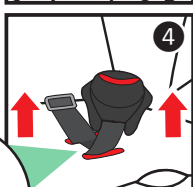
- Lift the fabric seat cover on the base of the child restraint to expose the slot **3**.



- Pull up both ends of the crotch strap (the buckle and metal plate) and slide strap through the opening in the plastic base **4**.



Continue to thread the crotch strap through the fabric seat cover and completely remove it **5**.

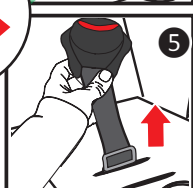


- Replace fabric seat cover.

To adjust crotch buckle:

- The crotch buckle has two (2) positions.

- Remove crotch buckle and reinstall with crotch buckle facing forward out of the desired slot **6**.



5. To reinstall harness system: repeat the previous steps in reverse order.

! WARNING: Harness straps **MUST** be attached with the Harness Strap Connector (backrest).

! WARNING: ENSURE that the buckle is facing **FORWARD** **7**.

! ENSURE that the strap is **COMPLETELY** in the slot and the crotch strap is **NOT** twisted.



6. Replace fabric seat cover and fabric crotch pad.



WARNING!

FAILURE TO REINSTALL THE HARNESS SYSTEM AND CROTCH STRAP CORRECTLY COULD RESULT IN SERIOUS INJURY OR DEATH.

PREPARING BOOSTER SEAT FOR USE

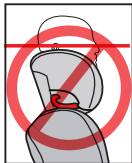


WARNING!

INCORRECT USE OF THE VEHICLE'S 3-POINT LAP-AND-SHOULDER SEAT BELT SYSTEM IS THE MOST COMMON MISTAKE PEOPLE MAKE. IT IS VERY IMPORTANT TO READ, UNDERSTAND AND FOLLOW ALL INSTRUCTIONS AND WARNINGS. DO NOT MISTAKE COMFORT FOR SAFETY. THE VEHICLE'S 3-POINT LAP-AND-SHOULDER SEAT BELT MUST BE SNUGLY ADJUSTED AT ALL TIMES.

! ENSURE the vehicle shoulder belt's position is correct for your child's size. **VERIFY OFTEN.**

! WARNING: **DO NOT** use this booster seat if the midpoint of your child's head is above the top of the booster seat headrest at its maximum height.



SECURING CHILD AND BOOSTER SEAT IN VEHICLE

WARNING!

FAILURE TO PROPERLY SECURE YOUR CHILD IN THE BOOSTER SEAT INCREASES THE RISK OF SERIOUS INJURY OR DEATH IN THE EVENT OF A SHARP TURN, SUDDEN STOP OR CRASH. In a crash, the booster seat provides **NO** protection for your child unless the vehicle 3-point lap-and-shoulder belt is properly secured. Follow these instructions carefully to properly secure your child.

IF YOUR CHILD HAS REACHED 15 KG, YOU CAN USE THE SEAT IN BOOSTER MODE.

! MAKE SURE THE CHILD RESTRAINT IS IN RECLINE POSITIONS 1 2 3 4 (SEE "RECLINE").

! WARNING: You **MUST** use the vehicle 3-point lap-and-shoulder belt system when restraining the child in the booster seat **1**.

! WARNING: Vehicle belts **MUST** be tight, adjusted to the child's body, and should not be twisted **1**.

! NEVER use a vehicle lap-only belt to secure child in booster seat **2**.

! NEVER USE A LOOSE SHOULDER BELT.

! NEVER position the shoulder belt under the child's arm **3** or place the shoulder belt behind the child's back **4**.

Lap portion of lap-and-shoulder belt MUST be low and snug across the hips, with the pelvis firmly engaged, just touching the child's thighs. The lap portion MUST NOT be lying across



the child's stomach as this can cause major injuries to the child in case of a sharp turn, sudden stop or crash.

! DO NOT allow the child to slouch, slide down in the seat, or create slack in the belt system **5**. If child will not keep vehicle belt properly positioned, **DO NOT** use this booster seat.

! The vehicle seat headrest should not create a gap between vehicle seat and booster seat 6. If so, remove the vehicle headrest.



! DO NOT use any load bearing contact points other than those described in the instructions and marked in the child restraint.

IF IN DOUBT ABOUT THESE POINTS OR ANY QUESTIONS RELATED TO INSTALLATION, PLEASE CONTACT HARMONY JUVENILE PRODUCTS.

INSTALLATION - BOOSTER SEAT

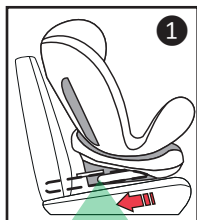


WARNING!

DUE TO VARYING ANGLES OF VEHICLE SEAT BELT RETRACTORS, EXCESS SLACK IN THE VEHICLE BELT SYSTEM MIGHT NOT BE REMOVED AUTOMATICALLY. Once the lap and shoulder portions of the seat belt are properly positioned and the buckle is attached, FEED ANY REMAINING SLACK OF THE SEAT BELT MANUALLY BACK INTO THE RETRACTOR TO TIGHTEN THE WHOLE SYSTEM.

! MAKE SURE THE CHILD RESTRAINT IS IN RECLINE POSITIONS ① ② ③ ④ (SEE "RECLINE").

1. Place the booster seat flush against a forward-facing vehicle seat, centered between the Isofix anchors. The vehicle seat **MUST** be equipped with a 3-point lap-and-shoulder belt. Booster must be level, stable and not rock side-to-side (see "Vehicle seating positions").

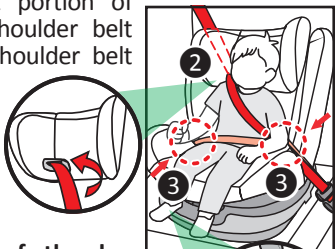


2. **ISOFIX INSTALLATION:** Locate the Isofix connectors underneath the rear of the seat backrest. Gently guide the Isofix connectors against the anchors, engaging the Isofix connectors. An audible "click" will be heard when engaged and the indicator window will turn **GREEN** ①.

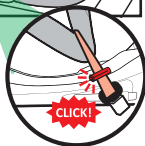


3. Place child in the booster seat with child's back flat against the back of the booster seat.
4. Adjust headrest height (see "Adjusting headrest and harness shoulder straps").

5. Thread shoulder belt portion of the 3-point lap-and-shoulder belt system through the shoulder belt guide ② and ensure that shoulder belt lies across child's shoulder and chest, and **NOT** across child's face or neck.



6. Thread both sides of the lap belt over lower guides on both sides as indicated ③. **ENSURE** that the belt is snug across the child's hips. It is important to ensure that any lap



strap is worn low down, so that the pelvis is firmly engaged, just touching their thighs and is **NOT** across their stomach.

7. Buckle the vehicle seat belt into place and ensure it is secure by gently pulling on it.

! Any straps holding the restraint to the vehicle should be tight, any straps restraining the child should be adjusted to the child's body, and all straps should not be twisted.

! Teach your child that seat belts are not toys and should **NEVER** be played with, regardless of whether the car is in motion or not.

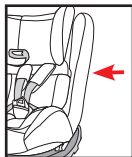
! **ALWAYS** be aware of what your children are doing in the back seat.

AIRCRAFT INSTALLATION

This child restraint is **NOT CERTIFIED** for aircraft use. Aircraft seats are not equipped with 3-point lap-and-shoulder belts which are required for use with this child restraint.

INSTRUCTION MANUAL STORAGE

We recommend that you store your instruction manual in the mesh pouch under the backrest fabric on the side of the child restraint.



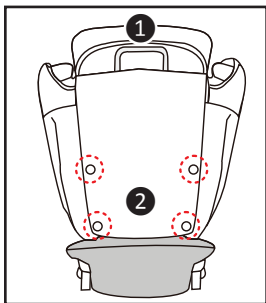
REMOVING/INSTALLING FABRIC SEAT COVER

Headrest:

Adjust headrest to its maximum height (see "Adjusting headrest and harness shoulder straps"). Grasp the fabric from the top and behind the headrest **1** and slide fabric cover off.

Backrest and seat base:

- **ENSURE** harness system is unfastened and crotch strap is removed (see “Removing/installing harness”).
- Undo the snaps found in front and behind the backrest **2**. Grasp fabric cover from the front of the seat, and gently slide the cover off to remove.



TO INSTALL:

To reinstall fabric covers, repeat previous steps in reverse order.

CARE AND MAINTENANCE

CLEANING YOUR SEAT COVER:

- **MACHINE WASH SEPARATELY** using cold water - delicate cycle.
- **DO NOT BLEACH.**
- **DRIP DRY** to prevent cover from shrinking.

CLEANING THE PLASTIC SHELL:

- **SPONGE CLEAN** using warm water and mild soap.
- **TOWEL DRY.**
- **DO NOT** use solvents, abrasive cleaners, or disassemble child restraint in any way, except as instructed.

CLEANING HARNESS STRAPS:

- Spot clean with a damp cloth. **DO NOT BLEACH.** **DO NOT** immerse the straps in water. Doing so may weaken the straps.

CLEANING METAL, PLASTIC HARNESS PARTS AND ROTATION BASE:

- Use mild soap and cool water on a damp cloth.

! NEVER lubricate the buckle. If buckle or harness

adjuster sticks or will not remain tight, check for foreign objects such as food, dirt, etc. Remove objects with tweezers and/or clean with a cotton swab. If you cannot get the harness to remain tight with the buckle securely locked, **DO NOT USE** this child restraint. Call Harmony Juvenile Products to purchase a replacement harness or buckle.

WARRANTY

This child restraint was manufactured by Harmony® Juvenile Products (HJP). HJP warrants this product to the original retail purchaser as follows:

LIMITED 2-YEAR WARRANTY

The following warranty conditions only apply to the country in which this product was first sold through retail channels to a consumer.

This child restraint is warranted against defective materials and workmanship for **TWO (2)** years from the date of original purchase. *An original receipt is required to validate your warranty.* HJP will, at its option, provide replacement parts for this product or replace this product. HJP reserves the right to discontinue or change fabrics, parts, models or products, or to make substitutions.

To make a claim under this warranty, you must contact HJP Customer Service at **www.harmonyjuvenile.com**, or call +44 (0) 1704 549881, or write to 10 Beach Priory Gdns., Southport, UK, PR8 1RT.

Proof of purchase is required and shipping charges are the responsibility of the consumer.

WARRANTY LIMITATIONS

This warranty does not include:

1. Damages which arise from negligence, misuse, or use not in accordance with this instruction manual.
2. Damage and wear arising from excessive stress.
3. Replacement of fabric as a result of natural wear or

fading of the fabric as a result of exposure to the sun or UV radiation.

The use of non-Harmony branded covers, inserts, toys, accessories or tightening devices is not approved by HJP. Their use could cause this child restraint to fail federal safety standards or perform worse in a crash. Their use automatically voids the HJP warranty.

LIMITATIONS OF DAMAGES

The warranty and remedies as set forth above are exclusive and in lieu of all others, oral or written, expressed or implied. In no event will HJP or the retailer selling this product be liable to you for any damages, including incidental or consequential damages, or loss of use arising out of the use or inability to use this product.

PLEASE REGISTER THIS CHILD RESTRAINT WITHIN 30 DAYS OF PURCHASE TO EXPEDITE WARRANTY CLAIMS AND TO VERIFY ORIGINAL DATE OF PURCHASE.