

# PA-112U

## 0-10V Dimmer

### Product Features

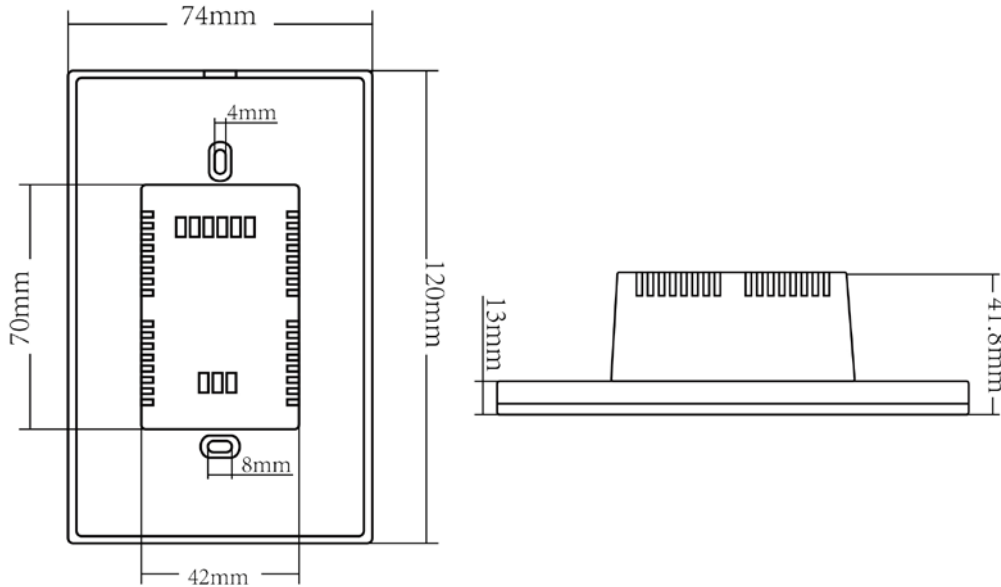
- Wide input voltage of 100-240VAC
- Single channel, output 0-10V analog dimming signal
- Can achieve 255 levels brightness adjustment
- High sensitive & high stable touch panel, fast & precise control
- Interface using tempered glass material, stylish appearance



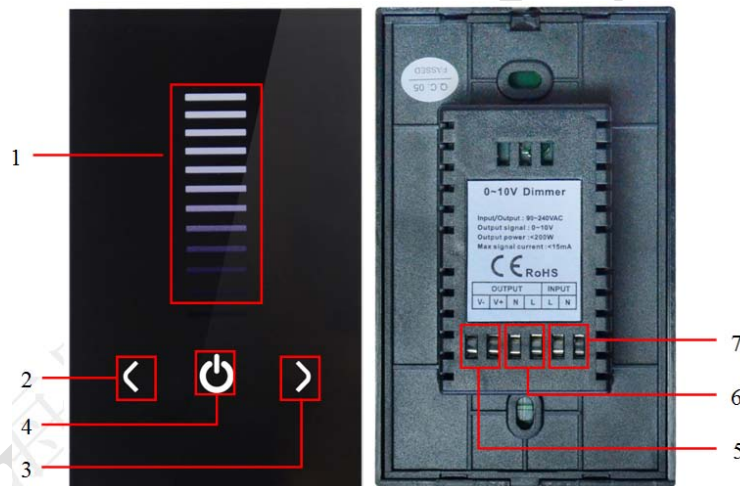
### Technical Parameters

Item		Parameters
Input	Voltage	100-240VAC
	Frequency	50/60Hz
	Static power	<1W
Output	Channel	1
	Voltage	100-240VAC
	Frequency	50/60Hz
	Analog signal	0-10V
	Maximum signal current	<15mA
	Power	<200W
Others	Dimension	74*120*41.8mm (L*W*H)
	Packing size	145*99*53mm (L*W*H)
	N.W.	184g
	G.W.	241g
	Operating temperature	-20℃ - 60℃

## Dimension(mm)



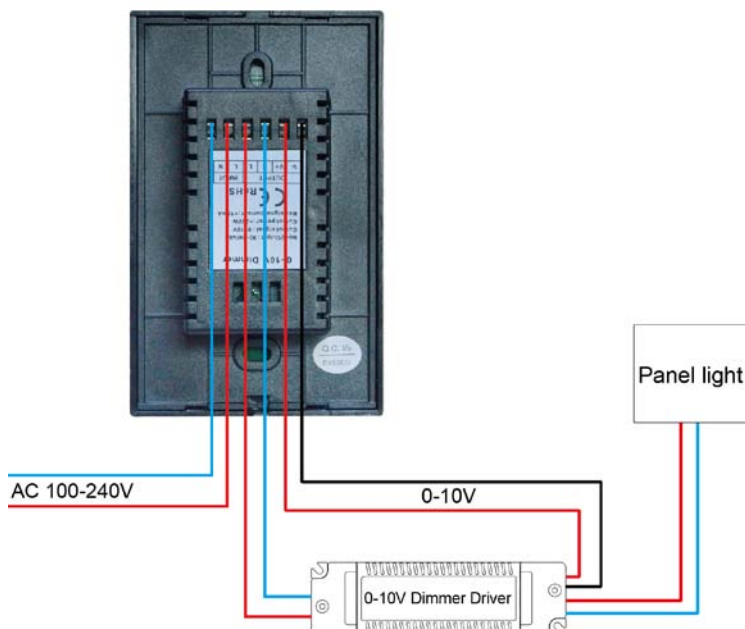
## Function Show of The Product



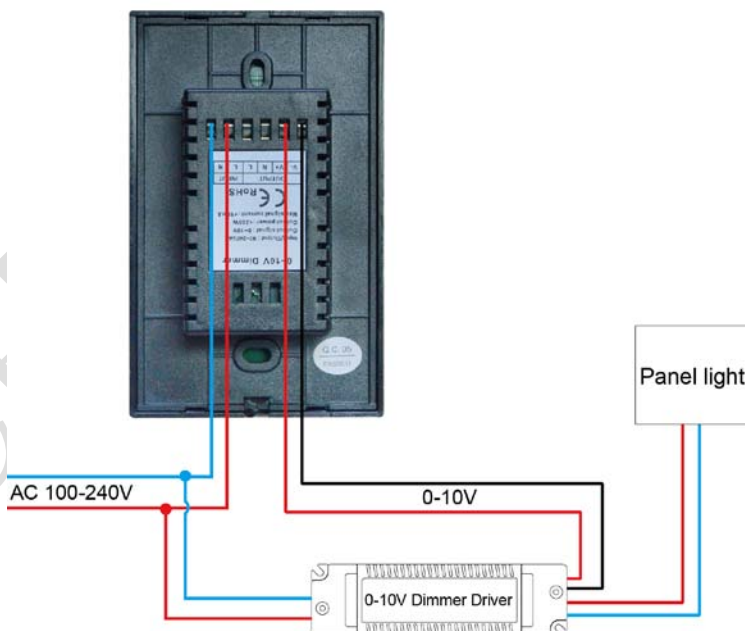
1	Brightness slider. It can adjust brightness 1-255 according to the color on the slider when touching by your finger
2	Brightness reduce key. Brightness reduce 1 with each short press, With long press the key for 3 seconds, it could reduce brightness quickly until the darkest.
3	Brightness increase key. Brightness increase 1 with each short press, With long press the key for 3 seconds, it could reduce brightness quickly until the brightest.
4	ON/OFF key. Turn on/off this dimmer at any state; when the dimmer is turned on, long press the key for 3 seconds, you can turn on/off buzzer.
5	0/10V analog signal output port
6	AC output port
7	AC input port

## Wiring Diagram

**Mode 1:** Suitable for the dimming driver with less than 200W. The switch button of dimmer can turn on or off the dimming driver.



**Mode 2:** Suitable for the dimming driver with greater than 200W, the dimming driver is supplied by the power grid. The dimmer can not turn on or off the dimming driver.

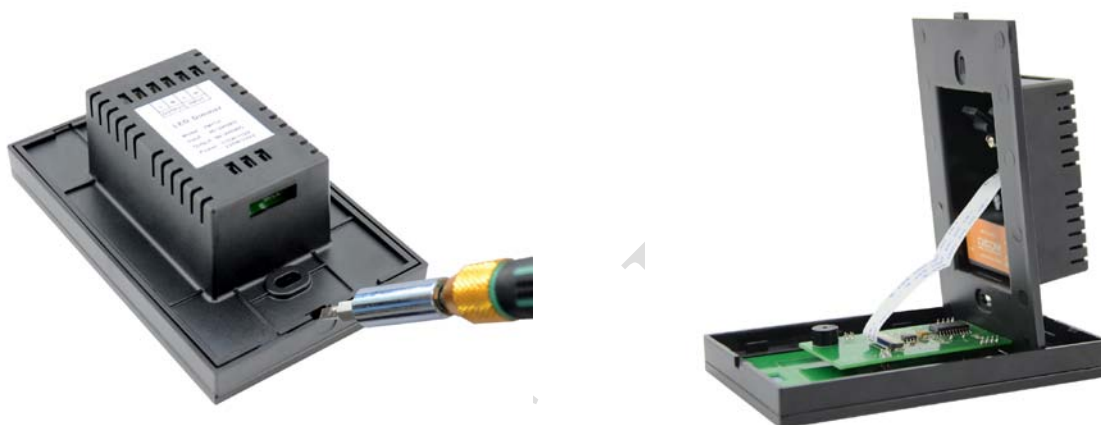


## Installation Guide

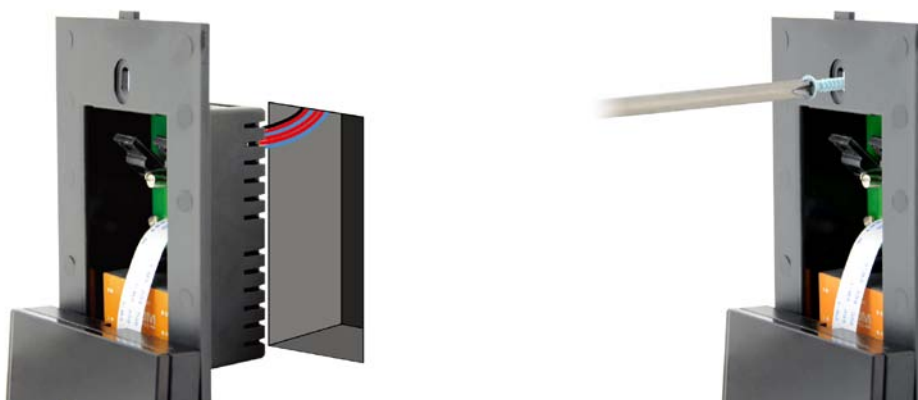
1. Connect wire according to typical application. Refer to typical application.



2. Gently pry gaps in touch panel with a screwdriver, and then you can slowly remove the panel.



3. Mount the controller on the cassette in the wall after connecting the wire, and then nail the screw, fix it on the wall, finally you can install the switch pedestal on the wall.



4. Buckle the glass panel to the bottom box in the right direction.

### Remarks:

1. Connect the load wire at first, then connect the power wire; Please ensure short circuit can not occur between connecting wire before you turn on the power.
2. Power supply voltage range is 100-240VAC, 50-60Hz, it may burn out the dimmer once exceed the voltage or frequency range.