

BALDOR MN412 Rectifier Manual

<http://www.manuallib.com/baldor/mn412-rectifier-manual.html>

WARNING statements describe conditions that may lead to personnel injury including potentially fatal injuries if the machine is improperly used and warnings are not followed.

ManualLib.com collects and classifies the global product instruction manuals to help users access anytime and anywhere, helping users make better use of products.

<http://www.manuallib.com>

BALDOR®

Instruction Manual For D-Series Replacement Rectifier Package

SAFETY NOTICE: **WARNING** statements describe conditions that may lead to personnel injury including potentially fatal injuries if the machine is improperly used and warnings are not followed.

Caution statements describe conditions that may lead to equipment damage.

- WARNING:** Be sure to read and follow all Instruction, Warning and Caution statements in the appropriate motor manual. Failure to do so may result in serious or fatal injury.
- WARNING:** Only qualified personnel should attempt the installation, operation and maintenance of this equipment. Proper guards and other suitable safety devices or procedures as may be desirable or as may be specified in safety codes, are neither provided by Baldor nor are the responsibility of Baldor. Safety devices are the owners responsibility.
- WARNING:** Disconnect all electrical power from the motor and accessory devices and TAG Power Source before performing this procedure. Electrical shock can cause serious or fatal injury.

Receiving & Inspection

When you receive your control, there are several things you should do immediately.

1. Observe the condition of the shipping container and report any damage immediately to the commercial carrier that delivered your control.
2. Remove the control from the shipping container and remove all packing materials from the control. The container and packing materials may be retained for future shipment.
3. Verify that the part number of the control you received is the same as the part number listed on your purchase order.
4. Inspect the control for external physical damage that may have been sustained during shipment and report any damage immediately to the commercial carrier that delivered your control.

Description

This rectifier package is made for the D-Series Motor Brake. It provides either full wave rectification (low voltage) or one-half wave rectification (high voltage) of AC voltage input. The standard D-Series VAC Motor Brake has a rectifier located on the brake coil internal to the brake. If the brake initially had the incorrect coil or was wired incorrectly, this internal rectifier could be blown. The resistance of the brake coil must be measured between brake leads B4 and B5 to ensure that the brake coil is the correct coil and still intact. The proper resistance values are shown in Table 1. Only if the coil resistance is verified to be correct should this replacement rectifier package be used. This package is capable of operating at any of the standard D-Series Brake nameplate voltages 104 through 575 VAC, 50 or 60 Hz.

Mounting

The Replacement Rectifier Package may be placed inside the motor conduit box. The Replacement Rectifier Package dimensions are shown in Figure 1.

Figure 1

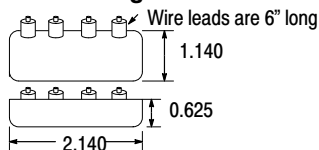


Table 1

Coil Voltage Low/High	3 & 6 lb-ft Resistance (ohms)	10 through 50 lb-ft Resistance (ohms)
115/230VAC	562	387
230/460VAC	2078	1550
287/575VAC	2987	2245
104/208VAC	384	290
190/380VAC	1341	923
250/500VAC	2336	1793

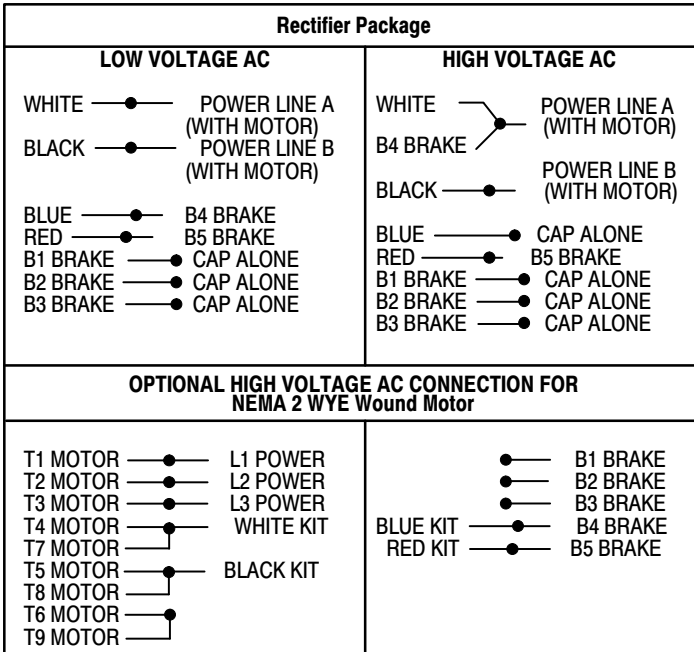
Wiring

Caution:

Do not use connection diagram on the brake label! Connect brake as described here only. Failure to connect as shown could result in damage to the replacement rectifier circuit.

Refer to Figure 2 for the correct connection information. Failure to follow Figure 2 can damage the Coil/Rectifier Package.

Figure 2



**Baldor Electric Company
World Headquarters**

P.O. Box 2400 Ft. Smith, AR 72902-2400
(479) 646-4711 Fax (479) 648-5792
www.baldor.com



* 4 1 2 - 8 0 8 *

All rights reserved. Printed in USA
MN412