

ABB MS10 Buoyancy level switch datasheet

<http://www.manuallib.com/abb/ms10-buoyancy-level-switch-datasheet.html>

The MS10 is a single-pole electric switch capable of sensing the liquid level inside a process vessel.

ManualLib.com collects and classifies the global product instruction manuals to help users access anytime and anywhere, helping users make better use of products.

<http://www.manuallib.com>

MS10

Buoyancy level switch K-TEK products

Measurement made easy



Introduction

The MS10 is a single-pole, double-throw electric switch capable of sensing the liquid level inside a process vessel. The unit is typically mounted via the integral 1-1/2" MNPT connection. Several standard adapters are available for use when a 1-1/2" FNPT is not available on the vessel. The MS10 requires no preventative maintenance as it is totally sealed. The MS10 provides either a normally open or normally closed dry contact to activate external devices such as alarms or solenoids. Variations in process fluid specific gravity have minimal effect on the level measured because of the small size of the integral float.

Features

- Electrical Contacts are Magnetically Isolated from Process
- Mounting Via 1-1/2" NPT Process Connection
- Optional Flange Mounting Adapters Available
- Hermetically Sealed SPDT Switch (NO / NC Contact)
- Vibration Resistant
- Switch is Totally Enclosed within Stainless Steel Housing
- Hex Shaped Housing & SPDT Contacts Allow for Easy Installation
- FM, CSA, ATEX and GOST Russia Approved
- CRN Registered

Power and productivity
for a better world™



SPECIFICATIONS

Switch type	Magnetically actuated, hermetically sealed, bi-stable switch. Single pole, double throw (Form C)
Contact Material	Rhodium alloy
Switch Action	Break before make
Max Deadband	Approx. +/- 0.50" of float travel
Contact Ratings	AC rating (max): 250 V or 1 amp resistive or 100 VA DC rating (max): 125 V or 0.5 amp resistive or 100 W Lamp Load Rating: 1/3 A @ 125 VAC See IR10 for higher Switch Contact Ratings
Process Temp.	-40 to 450°F / -40 to 232°C Contact factory regarding use in colder applications
Contact Temp.	-40 to 302°F / -40 to 150°C
Maximum Pressure	1500 psig / 103 bar standard 5000 psig / 345 bar with HP option
Customer Connections	1-1/2" MNPT Process, 1/2" FNPT conduit and AWG 20 wiring harness (18 inch). MS-10 housing is 2" Hex for tightening into process connection
Insertion Length	4" (101mm) Standard; Optional 5" (127mm), 6" (152mm) or 6-1/2" (165mm) Up to 14" (356mm) Insertion Length
Materials	316/L Stainless Steel
Specific Gravity	0.4 Minimum (Clean Fluids)

Consult Factory for Special Application Requirements

APPROVALS

Factory Mutual Research Corp and CSA Canadian Standards Associations Hazardous Locations:

FM



XP CL I, Div 1 & 2, GP A,B,C,D
T6@Ta=176°F (80°C)



DIP CL II, Div 1 & 2, GP E,F,G CL III
I /1 / AEx d IIC T6@Ta=176°F(80°C)
IS I /1 / A,B,C,D T6@Ta=176°F(80°C)
I /0/ AEx ia IIC T6@Ta=176°F(80°C)

ATEX



II 1 G EEx ia IIC T6
(-40°C < Tamb < +80°C)
(-40°F < Tamb < +176°F)

GOST Russia

0ExiaIIC T6 IP67

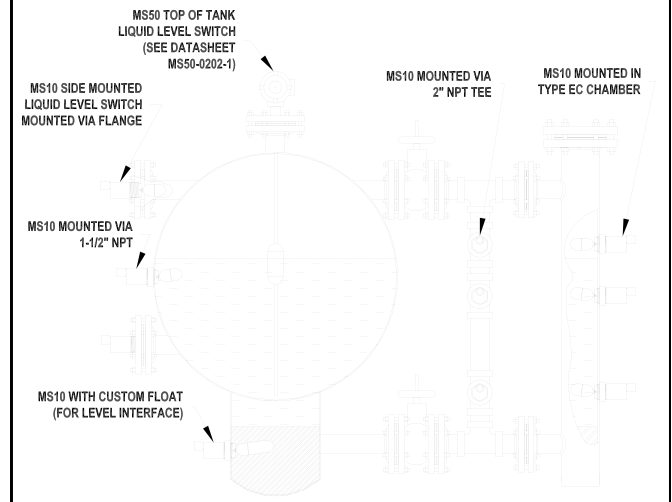
GOST Kazakhstan

0ExiaIIC T6 IP67



CRN Registered

Sample Application Using K-TEK Level Switches



ORDERING INFORMATION

- Omit items that are standard or not required

MS10 / a / b / c / d / e:

/a Process Connection

CAUTION: Requires minimum 2 1/2" nozzle ID.

15	1 1/2" MNPT (Standard)
20	2" MNPT
S6	316/L Stainless Steel
S4	304/L Stainless Steel
CST	Carbon Steel
WPxx	Welded Flange (specify type, material & rating from SLG-0001-1 Flange Designation Chart)
FLxx	Loose Flange (specify type, material & rating from SLG-0001-1 Flange Designation Chart)

Mounting Adapter Material

T2	2" NPT, 3000# Modified Tee Includes 1 1/2" x 2" reducer bushing
S2	2" Socket Weld, 3000# Modified Tee Includes 1 1/2" x 2" reducer bushing

/b Tag with Customer Specified Information

X	None
NT	316 Stainless Steel Hanging Name Tag

/c Insertion Length

EXT1	4 in. / 101 mm Insertion Length (Standard)
EXT2	5 in. / 127 mm Insertion Length
EXT3	6 1/2 in. / 165 mm Insertion Length
EXT4	6 in. / 152 mm Insertion Length (HP Option Only)
EXTn	Custom Insertion Length n = 6 3/4" to 14 in / 168 to 356 mm

/d Other Options

X	None
HP	Up to 5000 psig / 345 bar 1. 3900 psig max with CRN approval. 2. Flanged process connection required. 3. Only available with EXT4 insertion length. 4. Contact factory regarding materials of construction. 5. Requires a 3 1/2" minimum nozzle ID.

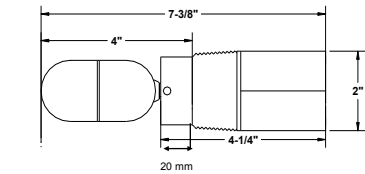
/e Approvals

X	None
FM	Factory Mutual
CSX	Canadian Standards Association Flameproof
CSI	Canadian Standards Association Intrinsically Safe
CEI	ATEX Intrinsically Safe
GR	GOST Russia
GK	GOST Kazakhstan

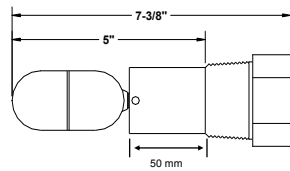


Application Inductive and Capacitive loads require special considerations.

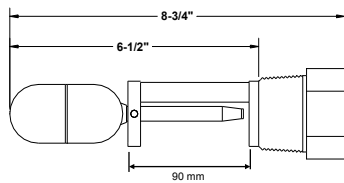
Note Contact factory for technical literature and/or applications assistance.



/ EXT1 option (standard)

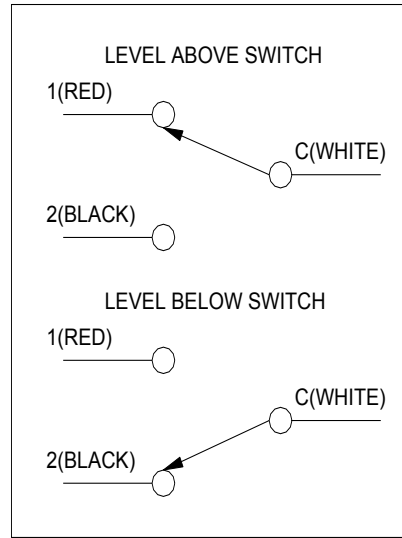


/EXT2 option

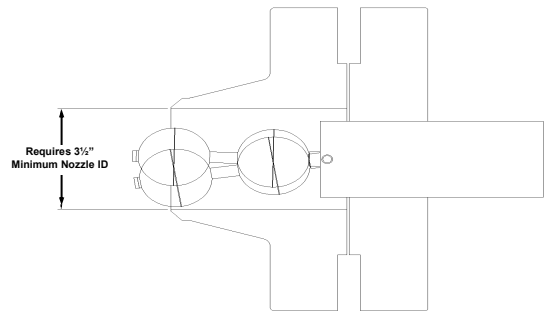


/EXT3 option

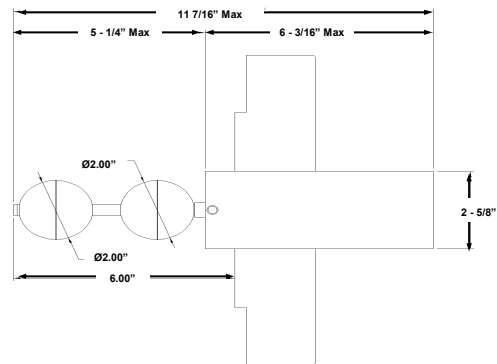
Figure 1—Operation of Electrical Contacts



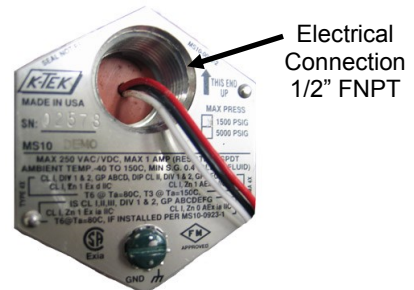
HP Option Through Nozzle Installation



High Pressure (HP) / EXT 4 Option



Wiring Connection Photo



Contact us

ABB Inc.

18321 Swamp Road
Prairieville, LA 70769 USA
Phone: +1 225 673 6100
Service: +1 225 677 5836
Fax: +1 225 673 2525
E-mail: quotes.ktek@us.abb.com
Service e-mail: ktek-service@us.abb.com

ABB Inc.

585, Boulevard Charest E., Suite 300
Quebec, QC Canada G1K 9H4
Phone: +1 418 877 2944
Service: +1 800 858 3847
Fax: +1 418 877 2834
E-mail: qc_rfq@ca.abb.com
Service e-mail: laserscanner.support@ca.abb.com

ABB Engineering (Shanghai) Ltd.

No. 5, Lane 369, Chuangye Road
Kangqiao Town, Pudong District
Shanghai, 201319, P.R. China
Phone: +86 10 64231407
Service: +86 21 61056421
Fax: +86 10 64371913
E-mail: shan.li@cn.abb.com
Service e-mail: rola.li@cn.abb.com

ABB Limited

Salterbeck Trading Estate
Workington, Cumbria, England CA14 5DS
Phone: +44 7885333752
Service: +44 145 3826661
E-mail: enquiries.mp.uk@gb.abb.com
Service e-mail: abb.service@gb.abb.com

www.abb.com/level

Note:

We reserve the right to make technical changes or modify the contents of this document without prior notice. With regard to purchase orders, the agreed particulars shall prevail. ABB does not accept any responsibility whatsoever for potential errors or possible lack of information in this document.

We reserve all rights in this document and in the subject matter and illustrations contained therein. Any reproduction, disclosure to third parties or utilization of its contents – in whole or in parts – is forbidden without prior written consent of ABB.

All copyrights and trademarks are the property of their rightful owners.

Copyright© 2013 ABB
All rights reserved



Sales



Service