

STOP!

BEFORE INSTALLING OR CONNECTING IK-WB01A/ IK-WB11A TO
YOUR PC, READ THIS QUICK START GUIDE

THANK YOU

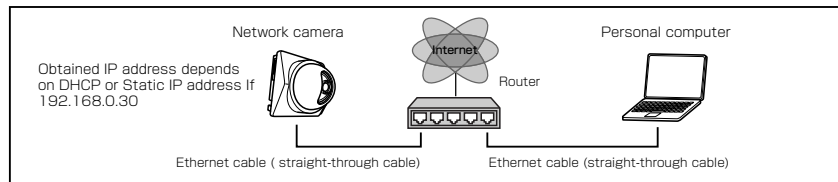
TOSHIBA

Quick Start Guide for Network connection

The following software must be downloaded and installed before installing the IK-WB01A/11A:

- Sun Microsystems JAVA™ software
 - o <http://www.java.com>
- Internet Explorer™ Version 6.0
 - o <http://www.microsoft.com/windows/ie>
- or Netscape™ Version 7.0
 - o <http://channels.netscape.com/ns/browsers>
- Toshiba Camera Finder software
 - o <http://www.netcam.toshiba.com>

- 1) Connect the IK-WB01A/11A to your network using a Cat5/Ethernet cable BEFORE powering on your camera. Repeat this step for any additional cameras.



- 2) Power on your devices in the following order: cable or DSL modem, router or hub, PCs.
- 3) Power on the IK-WB01A/11A.
- 4) Run the Toshiba Camera Finder software to automatically detect your cameras. Refer to both the Basic and Advanced User's Guides for more details.
- 5) If the camera is not found, power off the camera and repeat the above steps.
- 6) Click on User to view video, or Administrator to change the settings.

If you do not have a static IP address for your Internet connection, Toshiba offers a DDNS service that will allow you to have an Internet address for your camera.

- 1) Register for Toshiba's DDNS service by clicking on the link IK-WB11A settings under Network Settings>DDNS
- 2) Follow the instructions to set up your account.

Quick Start Guide for Direct* PC connection

* A Cat5 Crossover cable is required

The following software must be downloaded and installed before installing the IK-WB01A/11A:

- Sun Microsystems JAVA™ software
 - o <http://www.java.com>
- Internet Explorer™ Version 6.0
 - o <http://www.microsoft.com/windows/ie>
- or Netscape™ Version 7.0
 - o <http://channels.netscape.com/ns/browsers>
- Toshiba Camera Finder software
 - o <http://www.netcam.toshiba.com>

- 1) Connect the IK-WB01A/11A to your PC using a Cat5 Crossover cable BEFORE powering on your camera.
- 2) Change the IP address of your PC to Use the following IP address:

IP address: 192.168.0.50
Subnet mask: 255.255.255.0

Refer to the User's Guide for more information.

- 3) Power on the IK-WB01A/11A.
- 4) Run the Toshiba Camera Finder software to automatically detect your cameras. Refer to both the Basic and Advanced User's Guides for more details.
- 5) If the camera is not found, power off the camera and repeat the above steps.
- 6) Click on User to view video, or Administrator to change the settings.

If you do not have a static IP address for your Internet connection, Toshiba offers a DDNS service that will allow you to have an Internet address for your camera.

- 1) Register for Toshiba's DDNS service by clicking on the link IK-WB11A settings under Network Settings>DDNS
- 2) Follow the instructions to set up your account.

Login

- Enter "root" in the Login field and "ikwb" in the Password field.
- Click the Login button.

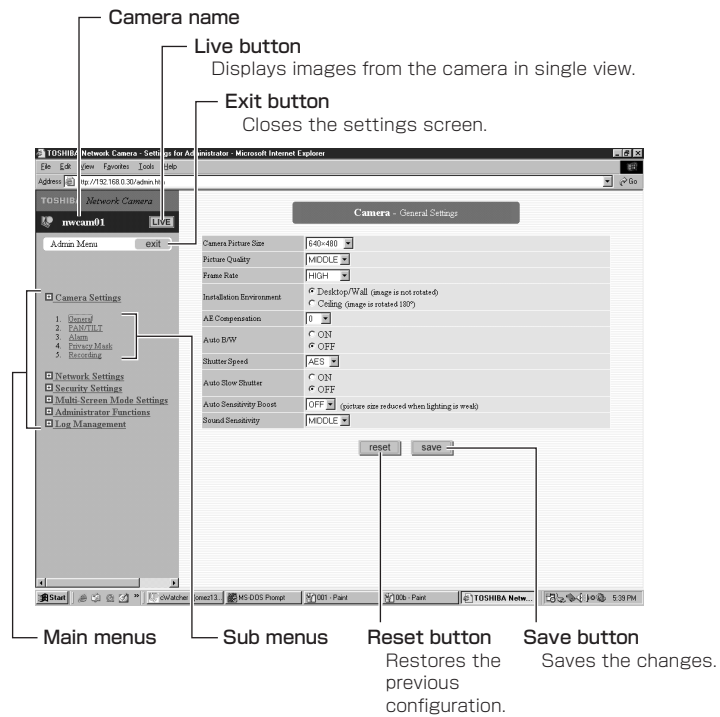
Changing the Login ID and Password

- From the Admin menu, click Administrator Functions and then select Changing the Password.
- Enter "root" in the Current Login ID field and "ikwb" in the Current Password field.
- Enter a new login ID in the New Login ID field and a new password in the New Password field and New Password (Confirm) field.
- Click the Save button.

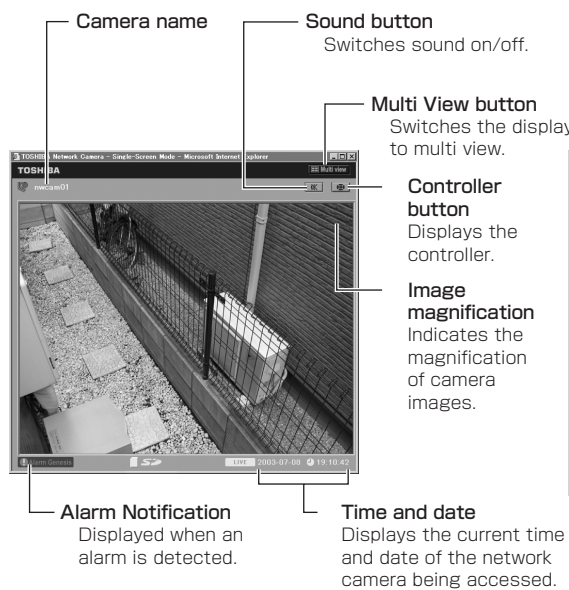
Other Settings

- For details on other settings, refer to Both the Basic and Advanced User's Guides.

●Admin Menu Screen



●Single View

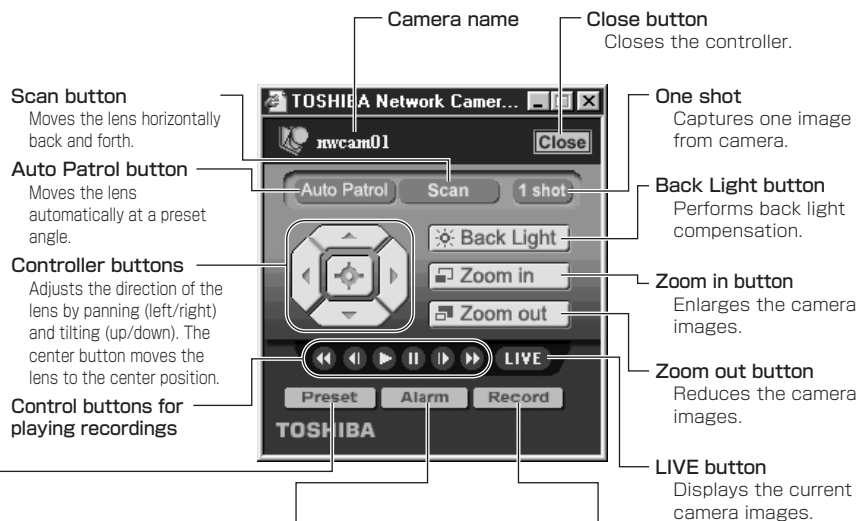


●Multi View

All the buttons and icons, except the button for switching views, function the same as those of single view.



●Administrator Controller



●Preset controller

●Alarm list controller

●Record list controller (IK-WB11)

