

**SONY®**

**PCS-1**

**PCS-11**

**PCS-TL50**

**PCS-G70**

**PCS-1600**

Video Communication System

**Phone Book Edit Program**

Version 3.00

Operation Manual

## **CONFIDENTIAL**

The material in this manual consists of information that is the property of Sony Electronics Inc. and is intended for use by the purchasers of the equipment described in this manual. Sony Electronics Inc. expressly prohibits the duplication of any portion of this manual or the use thereof for any purpose other than the operation or maintenance of the equipment described in this manual without the express written permission of Sony Electronics Inc.

The software described herein may also be governed by the terms of a separate end user license agreement.

Printed in USA

July 2005

©2005 Sony Electronics Inc.

Broadcast & Business Solutions Company

3300 Zanker Road, San Jose, CA 95134

# Table of Contents

<b>1. INTRODUCTION</b>	<b>1</b>
<b>2. SYSTEM REQUIREMENTS</b>	<b>1</b>
2-1. PCS System	1
2-2. Operating System	1
<b>3. DATA SPECIFICATIONS</b>	<b>1</b>
3-1. Format	1
3-2. Number of Entries and File Size	2
<b>4. INITIAL SETTINGS</b>	<b>2</b>
<b>5. MENU ITEMS</b>	<b>4</b>
<b>6. KEYBOARD SHORTCUTS</b>	<b>5</b>
<b>7. OPERATION INSTRUCTIONS</b>	<b>6</b>
<b>7-1. Cells</b>	<b>6</b>
7-1-1. Replacing Pictures	6
7-1-2. Sorting and Sizing Columns	6
7-1-3. Cut, Copy, Paste, Delete	6
7-1-4. Editing Rows	7
7-1-5. Selecting and Deleting Pictures	7
7-1-6. Required Fields	8
<b>7-2. Buttons</b>	<b>8</b>
7-2-1. Load Data Button	8
7-2-2. Save Data Button	9
7-2-3. Convert Button	9
<b>7-3. Phone Book Data Through Network</b>	<b>10</b>

# 1. INTRODUCTION

The Phone Book Edit Program is used to manage phone book data for PCS video communication systems. This operation manual describes how to use the program to manage data in the phone book.

Phone book data can be:

- Edited and saved on a memory stick.
- Converted to different PCS systems.
- Acquired and registered from a PCS terminal on a network without a memory stick.

Pictures can be pasted to the phone book.

# 2. SYSTEM REQUIREMENTS

## 2-1. PCS System

The Phone Book Edit Program is compatible with the following PCS systems:

PCS-1600 V3.33 or higher

PCS-1 V3.00 or higher

PCS-11 V3.00 or higher

PCS-TL50 V2.00 or higher

PCS-G70 V2.00 or higher

## 2-2. Operating System

Microsoft Windows XP

# 3. DATA SPECIFICATIONS

## 3-1. Format

Phone book data is in CSV format and is saved to the following folder of the memory stick:

S:\MSSONY\PRO\TVCONF\LIST\PCS\_DLST.CSV

Pictures are in JPEG format and are saved to the following folder of the memory stick:

S:/MSSONY/PRO/TVCONF/LIST/LSPXXXXX.JPG

**NOTE:** XXXXX corresponds to the five-digit list number.

### 3-2. Number of Entries and File Size

The maximum number of entries that can be registered in the phone book is 500. (PCS-G70 allows 503.)

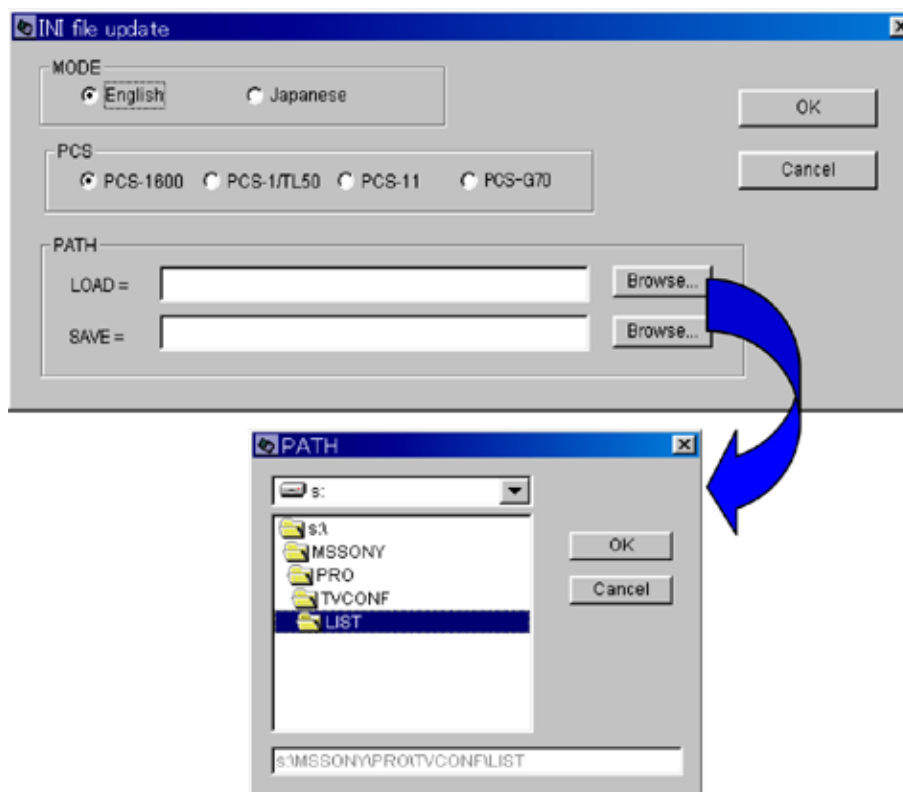
The maximum picture size is 80 × 60 (with a file size of 2K or less).

## 4. INITIAL SETTINGS

When starting the Phone Book Edit Program for the first time, set initial settings as follows:

1. Start the Phone Book Edit Program.

The INI file update window in Figure 1 appears.



**Figure 1**

2. Select the appropriate items:

MODE	English or Japanese
PCS	PCS-1600, PCS-1/TL50, PCS-11, or PCS-G70
LOAD	Specify folder for reading phone book data. Example: S:\MSSONY\PRO\TVCONF\LIST
SAVE	Specify folder for saving phone book data. Example: S:\MSSONY\PRO\TVCONF\LIST

**NOTE:** The PCS.INI file is located at: C:\Program Files\PhoneBookEdit\

3. Click OK to complete the initial settings.

After you click OK, the phone book data in the folder that you specified is read, and the entries and pictures are displayed in cells as shown in Figure 2.

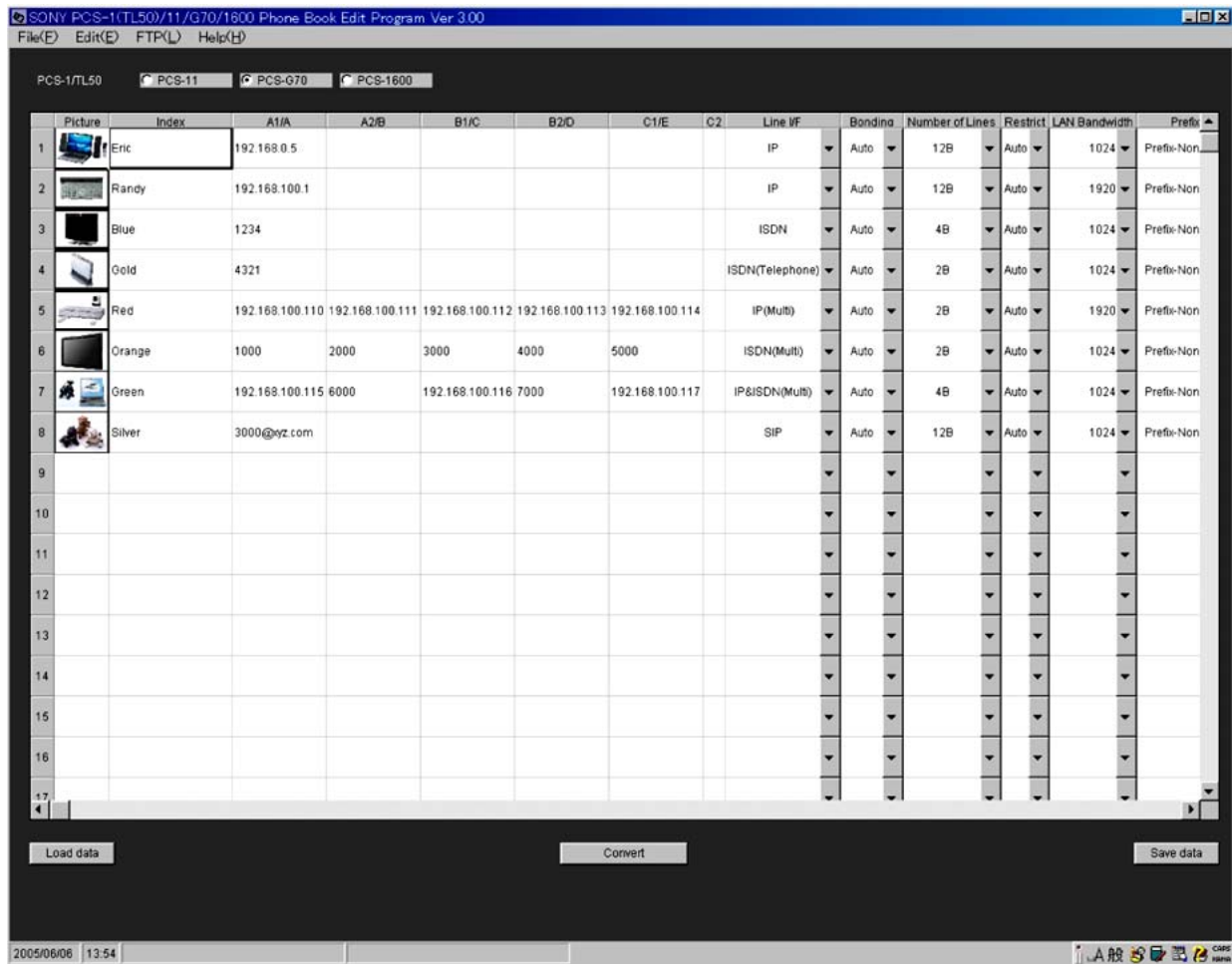


Figure 2

## 5. MENU ITEMS

**Table 1. Menu Items**

Menu	Submenu	Keyboard Shortcut	Function
File(E)	Open	Ctrl+O	Reads phone book data.
	Save	Ctrl+S	Saves phone book data.
	Convert	Ctrl+P	Converts phone book data.
	Exit	Ctrl+F	Exits application.
Edit(E)	Delete	Del	Deletes selected cell or row.
	Copy	Ctrl+C	Copies selected cell or row to clipboard.
	Cut	Ctrl+X	Cuts selected cell or row to clipboard.
	Paste	Ctrl+V	Pastes selected cell or row from clipboard.
	Undo	Ctrl+Z	Returns to previous operation. (Only one undo is available.)
	Clear	Default	Displays default value in selected cell or row.
	Initial setting	Ctrl+I	Changes initial file settings, then redisplay data.
FTP(L)	—	—	Acquires and registers phone book data from PCS terminal on network.
Help(H)	—	F1	Displays Help window.

## 6. KEYBOARD SHORTCUTS

**Table 2**

<b>Keyboard Shortcut</b>	<b>Function</b>
Arrow (up, down, left, right)	Moves cursor focus to different cell.
Tab	Moves cursor focus to next cell.
Shift+Tab	Moves cursor focus back to the previous cell.
Enter	Opens and closes pull down menu, and enters input.
Space	Enters selection mode of pull down menu.
Ctrl+C	Copies selected cell or row to clipboard.
Ctrl+X	Cuts selected cell or row to clipboard.
Ctrl+V	Pastes selected cell or row from clipboard.
Ctrl+Z	Returns to previous operation. (Only one undo is available.)
Del	Deletes selected cell or row.
F1	Displays Help window.
F2	Opens row edit dialog box.



## 7. OPERATION INSTRUCTIONS

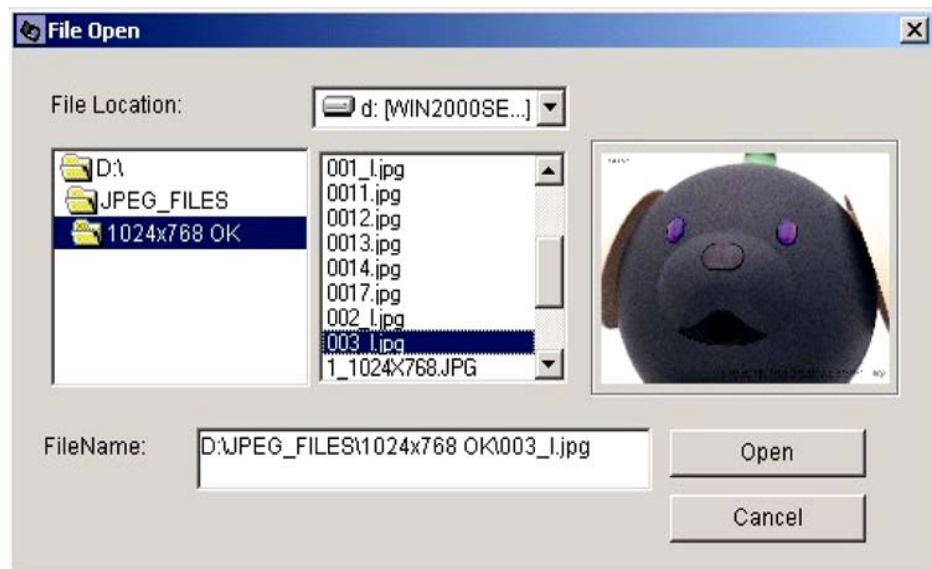
### 7-1. Cells

#### 7-1-1. Replacing Pictures

To replace pictures:

1. Double-click the picture within its cell.

The following dialog box is displayed. (See Figure 3.)



**Figure 3**

2. Navigate to the appropriate JPEG file, then click Open.

#### 7-1-2. Sorting and Sizing Columns

To sort the Index or Line I/F column, click the column header, which is then sorted in ascending or descending order.

Column width can be changed, except for the Picture column.

---

**NOTE:** Row height cannot be changed.

---

#### 7-1-3. Cut, Copy, Paste, Delete

Cells or rows can be cut, copied, pasted, or deleted.

---

**NOTE:** Rows cannot be inserted.

---

### 7-1-4. Editing Rows

To edit a row, right click the selected cell, or press F2. The following Editing dialog box is displayed. (See Figure 4.)

**Figure 4**

### 7-1-5. Selecting and Deleting Pictures

To select a file for the picture:

1. Click in the picture area.
2. When the File Open dialog box appears, select the picture from the appropriate folder, and click Open.

To delete a picture, click the Clear button.

### 7-1-6. Required Fields

Index is a required field. If the Index field is blank, the error message "Please input" appears.

The data required in the LAN Bandwidth field depends on which PCS system radio button is selected:

PCS-1600/11: 1-1024

PCS-1/TL50: 1-1920

PCS-G70: 1-4096

For fields other than Index and LAN Bandwidth, the default value is input when left blank.

## 7-2. Buttons

### 7-2-1. Load Data Button

To load phone book data:

1. Click the Load Data button.
2. When the Load dialog box appears, select the appropriate folder containing the phone book data.

**NOTE:** Folders on the PC (as well as the memory stick) can be specified.

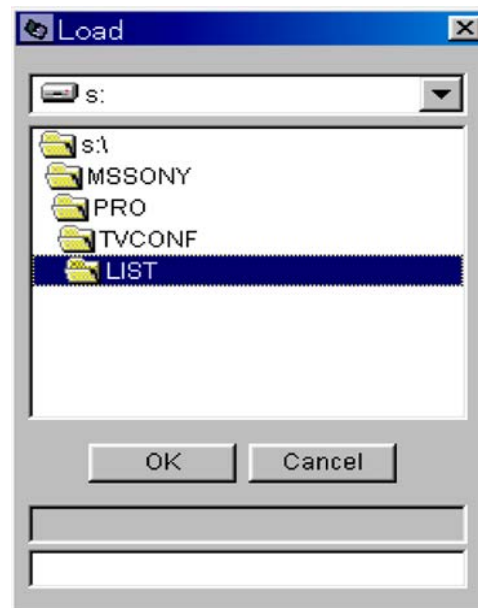
3. Click OK.

The phone book data is read, and the contents are displayed in the cells.

---

**NOTE:** If you click OK, and phone book data does not exist in the specified folder, the Load dialog box is displayed as shown in Figure 5.

---



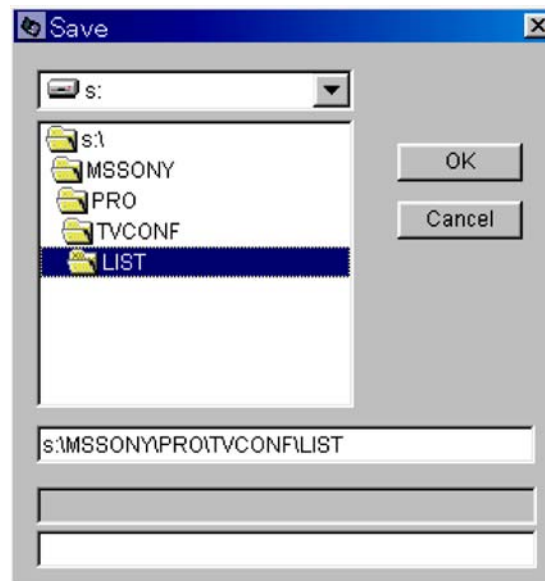
**Figure 5**

### 7-2-2. Save Data Button

To save the contents of cells to a phone book data file:

1. Click the Save Data button.
2. When the Save dialog box appears, select the appropriate folder containing the phone book data. (See Figure 6.)

**NOTE:** Folders on the PC (as well as the memory stick) can be specified.



**Figure 6**

3. Click OK.

The phone book data is saved to the appropriate phone book data file.

### 7-2-3. Convert Button

To convert phone book data from the current PCS system to another PCS system:

1. Click the appropriate PCS radio button at the top of the screen. (See Figure 7.)



**Figure 7**

2. Click the Convert button.

The data are converted. The converted contents are displayed in the cells, and the PCS indicator in the upper left of the screen changes.

---

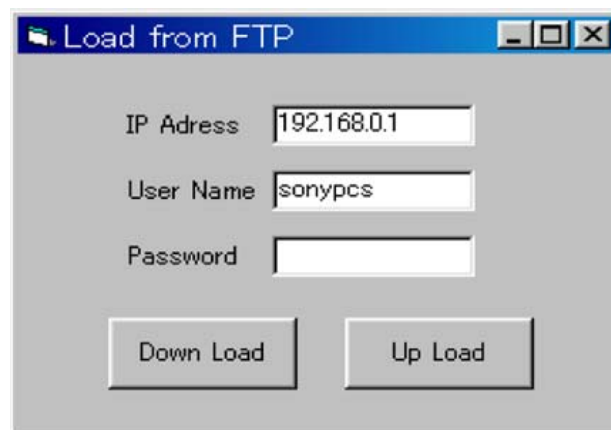
**CAUTION:** If phone book data is converted two or more times, the data may not be completely returned.

---

### 7-3. Phone Book Data Through Network

To exchange phone book data with a PCS terminal through a network:

1. Click the FTP(L) menu.
2. The Load from FTP dialog box appears. (See Figure 8.)



**Figure 8**

3. Enter:

IP Address  
User Name  
Password

**NOTE:** Confirm the user name and password of the PCS terminal from the administrator.

4. Click the Down Load button.

The phone Book data from the PCS terminal is read, which takes approximately three minutes.

---

**NOTE:** PCS-1600 does not support the FTP function. The LOAD folder can only be accessed via FTP.

---