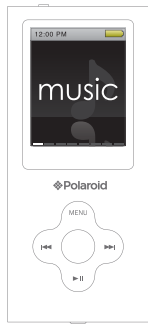


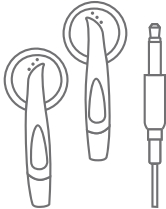


User Guide

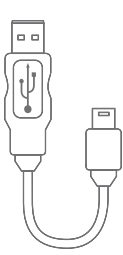
In the box



Player



Headphones



USB Cable

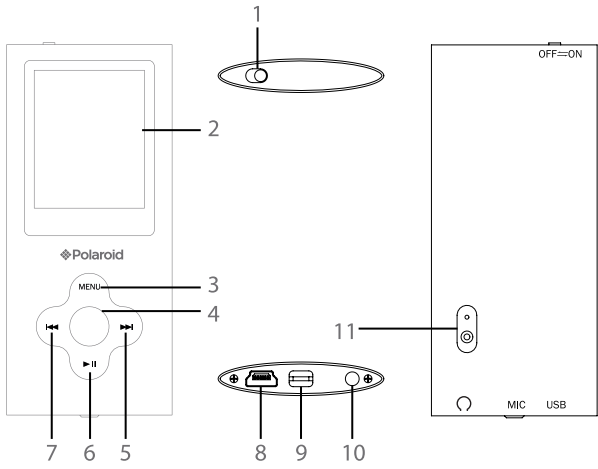


User Guide



CD

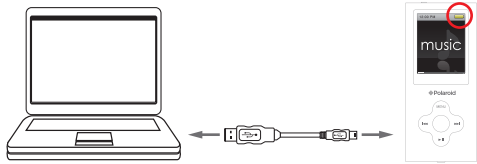
Location of controls



1. [POWER] On-Off switch
2. LCD screen
3. [MENU] button: previous menu / main menu
4. [SELECT] button: confirm selection / volume menu / main menu (hold)
5. [▶▶] button: next file / fast forward (hold) / volume up
6. [▶||] button: play / pause / power on-off (hold) / shutter (camera) / start-stop video recording
7. [◀◀] button: previous file / rewind (hold) / volume down
8. Mini USB Port
9. Microphone
10. Headphone jack
11. Camera lens

Charging

1. Slide the [POWER] switch to the **ON** position.
NOTE: The player will not charge while in the power **OFF** position.
2. Connect the player to your computer using the included USB cable.
3. Charge the battery between 3-5 hours. Do not charge for more than 8 hours.
4. The battery icon will move while charging and stop moving when fully charged.
5. Make sure the player fully charged before turning it on.



NOTE: Charge the player for at least 8 hours before using it for the first time.

Battery level indication:

- indicates that the battery is full.
- indicates low battery; the player should be charged as soon as possible.

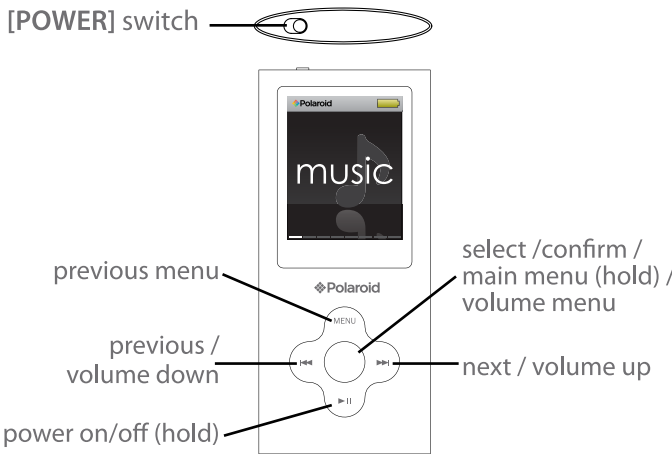
Basic operation

Turning on/off

Make sure the MP3 player is fully charged before turning it on.

- To turn on the player, make sure the [POWER] switch is in the "ON" position and press and **HOLD** the [▶||] button until the display lights up.
- To turn off the player, press and **HOLD** the [▶||] button until the display shuts off or slide the [POWER] switch to the "OFF" position.

Slide left to turn ON ← → Slide right to turn OFF



To navigate the main menu

- [▶▶] button - moves the selection right to the next option.
- [◀◀] button - moves the selection left to the previous option.
- [SELECT] button - makes a selection.

To navigate sub-menus

- [▶||] button - moves the selection down.
- [◀◀] button - moves the selection up.
- [SELECT] button - select option / **HOLD** for main menu.
- [MENU] button - return to previous menu.

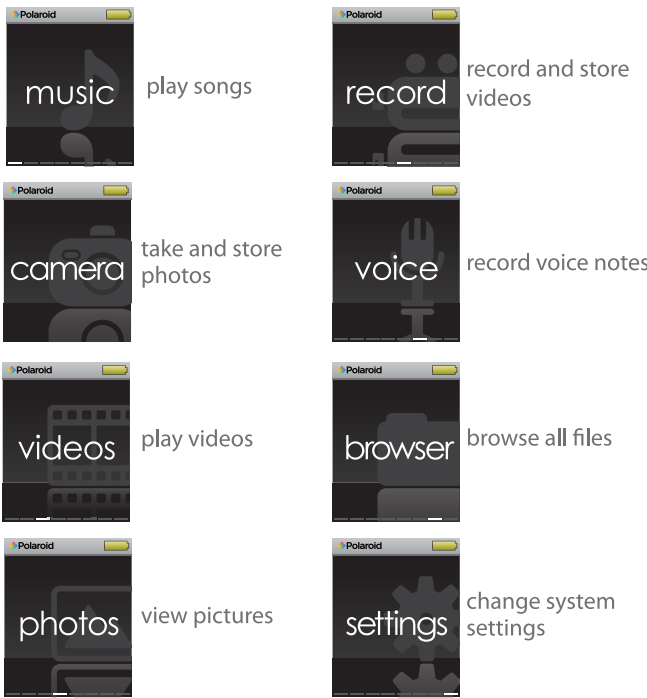
Adjusting the volume

NOTE: You must be in playback mode to access the volume menu.

1. Press the [SELECT] button to open the volume menu (a speaker will be shown on the screen).
2. Press [◀◀] to decrease volume.
3. Press [▶▶] to increase volume.
4. Press [SELECT] again to confirm and exit volume menu.

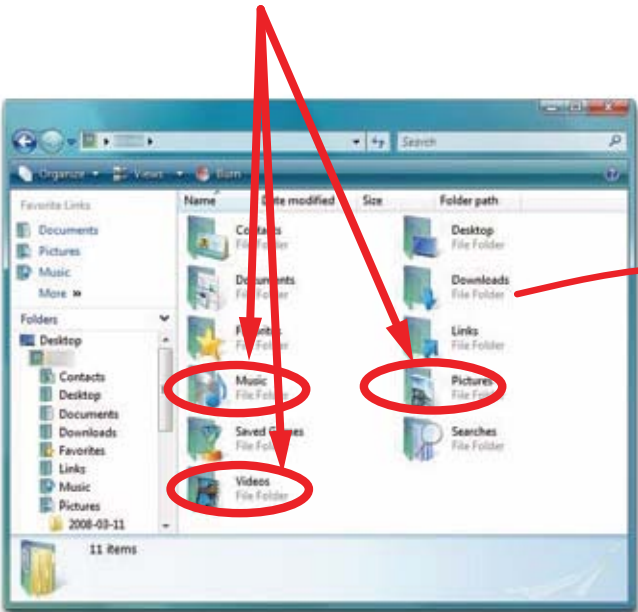
Main menu

After turning on the player, the main menu appears. Use the [◀◀] or [▶▶] buttons to scroll to the desired option on the main menu and press the [SELECT] button to confirm your choice. To return to the main menu at any time, press and **HOLD** the [SELECT] button.



Transferring media files to the player

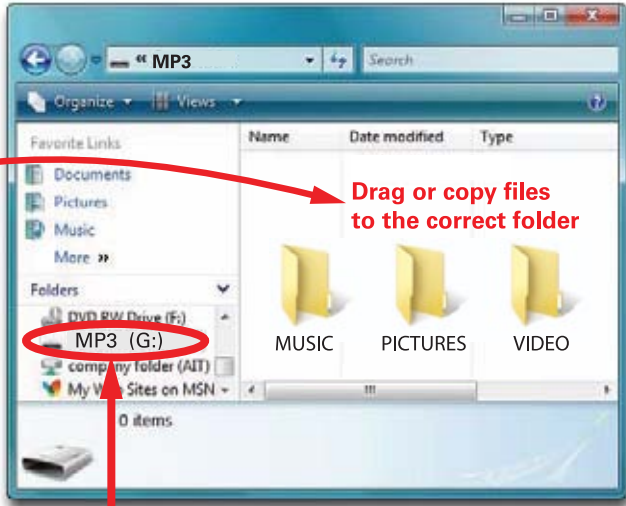
1. Find music, picture, or video files on your computer.



IMPORTANT: Do not disconnect the MP3 Player from the PC while transferring files as doing so will damage the MP3 Player and your files.

NOTE: Screenshots above may be slightly different than your computer's operating system.

2. Connect the MP3 Player to your computer, and locate "MP3."
3. Drag and Drop or Copy and Paste the files to the appropriate file type folder (MUSIC, PICTURES, VIDEO, etc.).



Locate "MP3"

When you are done, disconnect your MP3 Player from the computer using the "Safe Device Removal" utility in the taskbar.

Music

To play music

1. Select "music" from the main menu and press the [SELECT] button to confirm.
2. Scroll to the desired folder and press the [SELECT] button to confirm.
3. Use the [◀◀] or [▶▶] button to select a track then press the [SELECT] button to start playing the selected track.
4. Press the [MENU] button at any time to return to the previous menu.

Pausing playback

1. While a song is playing, press the [▶||] button to pause the playback.
2. To resume the playback, press the [▶||] button once again.

Skipping Tracks

1. Press the [▶▶] button to skip forward to the next track.
2. Press the [◀◀] button to skip back to the previous track.

Searching backward or forward within a track

1. Press and **HOLD** the [◀◀] button to rewind within a track.
2. Press and **HOLD** the [▶▶] button to fast forward within a track.

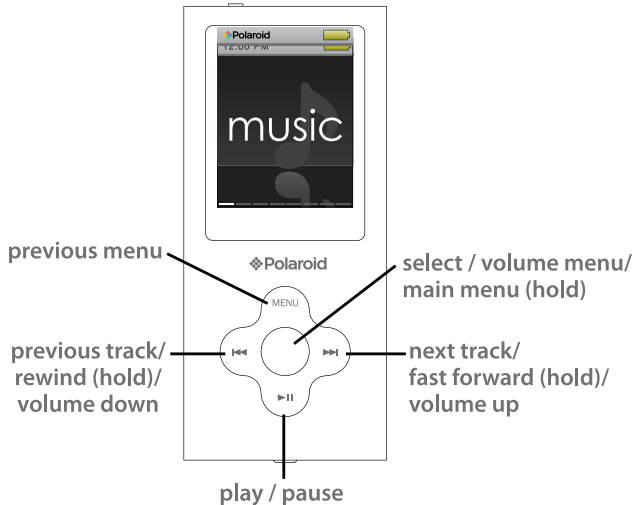
Adjusting the volume

*See "Basic operation".

Music submenu

1. While playing music, press and **HOLD** the [MENU] button for 2 full seconds and release to open the music submenu.
2. Use the [◀◀] or [▶▶] right buttons to select and option and press the [SELECT] button to confirm.

NOTE: To save a song to a "favorites" list, open the music submenu and select "Add to MyList" where you can choose from five playlists. To access the playlists, select "My Music List" from the music menu.

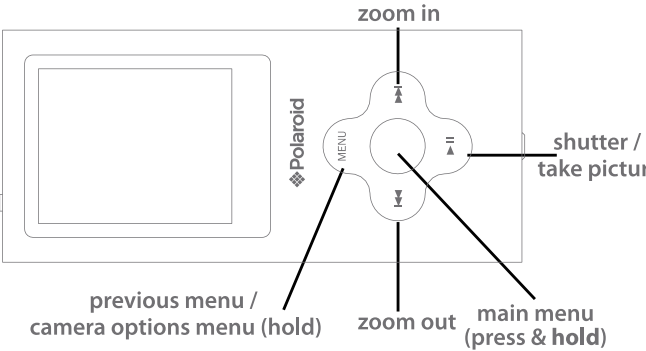


Camera

To use the camera

1. Select “**camera**” from the main menu and press the [SELECT] button to confirm. The LCD screen turns into the viewfinder screen.
2. Press the [▶▶] button to zoom in.
3. Press the [◀◀] button to zoom out.
4. Press the [▶II] button to take a picture and save the file.
5. Press and **HOLD** the [MENU] button for two full seconds then release to bring up the camera menu where you can change the camera’s settings.
6. Press the [MENU] button to return to camera mode.
Press again to go to main menu.

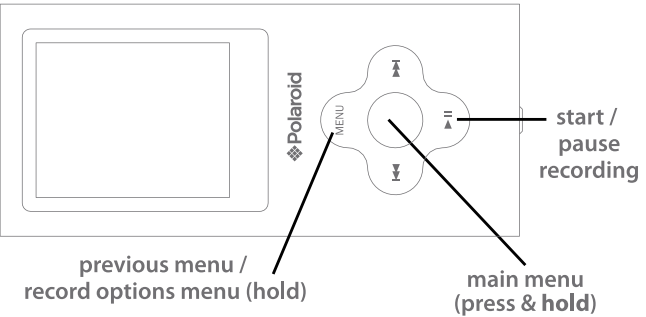
Note: Camera pictures will be saved in a folder which can be found in the “**photos**” section. You can also find the camera pictures in the “**PICTURES**” folder of the “**browser**” section.



Video camera

1. Select “**record**” from the main menu and press the [SELECT] button to confirm. The LCD screen turns into the viewfinder screen.
2. Press the [▶II] button to start recording.
3. Press the [▶II] button again to pause the recording.
4. Press the [MENU] button to stop recording and save the file.
5. Press and **HOLD** the [MENU] button for two full seconds and release to bring up the recording options menu where you can change the recording settings.

Note: Recorded videos will be saved in a “**CAMERA**” folder in the “**videos**” section. You can also find the recorded videos in the “**VIDEOS**” folder of the “**browser**” section.



Browser and deleting files

The “**browser**” section is a file directory of all information on the player. All files are categorized into their respective folders. Select “**browser**” from the main menu and press [SELECT] to confirm. You can now browse through all of your files easily by category. Press and **HOLD** the [SELECT] button at any time to return to the main menu.



Deleting files:

1. Connect the MP3 Player to your computer, and locate “**MP3.**”
2. Open “**MP3**” by double clicking on it.
3. Locate the file you would like to delete and **RIGHT** click on the file.
4. Locate “**Delete**” and **LEFT** click on the selection.
5. Select Yes or No to confirm or deny deletion of the file.

Or

1. Connect the MP3 Player to your computer, and locate “**MP3.**”
2. Open “**MP3**” by double clicking on it.
3. Locate the file you would like to delete and **RIGHT** click on the file.
4. Press **DELETE** on the keyboard.

System settings

Select “**settings**” from the main menu and press the [SELECT] button to confirm.



System Settings options:

- Date & Time:** Change the date and time displayed on the player.
- Display:** Change the backlight timer and brightness to conserve battery power.
- Power Saving:** Set the Auto-Off timer (“**Idle Time**”). This timer turns the player off after the chosen period of inactivity to conserve battery power. Also set the Sleep Timer.
- Language:** Change the display language of the player.
- Player Information:** View the player information including free space, etc.

Note: When changing settings, press and **HOLD** the [MENU] button to move the cursor to the next option.

Legal information

FCC Part 15:
This device complies with Part 15 of the FCC Rules. Operation is subject to the following two conditions:

- (1) this device may not cause harmful interference, and
- (2) this device must accept any interference received, including interference that may cause undesired operation.

Warning: Changes or modifications to this equipment not expressly approved by the party responsible for compliance could void the user’s authority to operate the equipment.

NOTE: This equipment has been tested and found to comply with the requirements for a Class B digital device under Part 15 of the Federal Communications Commission (FCC) rules. These requirements are intended to provide reasonable protection against harmful interference in a residential installation. This equipment generates, uses and can radiate radio frequency energy and, if not installed and used in accordance with the instructions, may cause harmful interference to radio communications.

However, there is no guarantee that interference will not occur in a particular installation. If this equipment does cause harmful interference to radio or television reception, which can be determined by turning the equipment off and on, the user is encouraged to try to correct the interference by one or more of the following measures:

- Reorient or relocate the receiving antenna.
- Increase the separation between the equipment and receiver.
- Connect the equipment into an outlet on a circuit different from that to which the receiver is connected.
- Consult the dealer or an experienced radio/TV technician for help.

Do not attempt to repair or modify this equipment.

Shielded USB cables must be used with this unit to ensure compliance with the Class B FCC limits.

PLR IP Holdings, LLC, its licensees and affiliates, fully support all electronic waste initiatives. As responsible stewards of the environment, and to avoid violating established laws, you should properly dispose of this product in compliance with all applicable regulations, directives or other governance in the area where you reside. Please check with local authorities or the retailer where you purchased this product to determine a location where you can appropriately dispose of the product.

You may also go to [HYPERLINK "http://www.polaroid.com"](http://www.polaroid.com) www.polaroid.com and reference About / Electronic Recycling to learn more about the specific laws in your area and to locate a collection facility near your home.

If your electronic device has internal memory on which personal or other confidential data may be stored, you may want to perform a data sanitization process before you dispose of your device to assure another party cannot access your personal data. Data sanitization varies by the type of product and its software, and you may want to research the best sanitization process for your device before disposal. You may also check with your local recycling facility to determine their data sanitization procedures during the recycling process.

Troubleshooting

Can not power on

- The battery may be exhausted, please recharge the battery.
- Check that the [POWER] switch is in the **ON** position.

Files can not be transferred to the player

- Check if the driver is installed correctly in the computer by disconnecting and then reconnecting the player to the computer
- Check the connection between the player and PC, and confirm the USB cable is properly connected.

Player not recognized by computer

- Check the connection between the player and PC, and confirm the USB cable is properly connected.
- Check that the [POWER] switch is in the **ON** position.

No sound from the headphones

- Please ensure the volume is turned up, and the headphones are properly connected.
- Check if the format of music file is supported by the player.

Can not record

- Check if there is enough memory and battery capacity.

Display is in the wrong language

- Please ensure you selected the correct language from the “**Settings**” menu.

The buttons do not work

- Slide the [POWER] switch to the left to unlock the player.

I cannot display my .jpg files

- Many digital cameras and image editing softwares add hidden data to the .jpg files. This data can prevent the player from loading the images. Try to eliminate them by saving the file with another name.

Limited Warranty

This product as supplied and distributed new by AIT, Inc. (“AIT”) to the original consumer purchaser is warranted by AIT against defects in material and workmanship for a period of one year from your date of purchase (“Warranty”). In the unlikely event that this product is defective, or does not perform properly, you may within one year from your original date of purchase return it to the authorized service center for repair or exchange.

TO OBTAIN WARRANTY SERVICE:

- Provide proof of the date of purchase within the package (Dated bill of sale).
- Prepay all shipping costs to the authorized service center, and remember to insure your return.
- Include a return shipping address (no P.O. Boxes), a telephone contact number, and the defective unit within the package.
- Describe the defect or reason you are returning the product.

Your product will be repaired or replaced, at our option, for the same or similar model of equal value if examination by the service center determines this product is defective. Products received damaged as a result of shipping, will require you to file a claim with the carrier.

The shipping address of the authorized service center is:

AIT, Inc.
ATTN: Customer Service (2nd Floor)
14-C 53rd Street
Brooklyn, NY 11232

IN NO EVENT WILL AIT, ITS MANUFACTURERS, DISTRIBUTORS OR PLR IP HOLDINGS, LLC BE LIABLE FOR ANY INCIDENTAL, DIRECT, INDIRECT, SPECIAL, PUNITIVE OR CONSEQUENTIAL DAMAGES (SUCH AS, BUT NOT LIMITED TO, DAMAGES FOR LOSS OF PROFITS, BUSINESS, SAVINGS, DATA OR RECORDS) RELATED TO THIS PRODUCT. EXCEPT AS STATED HEREIN, NO OTHER WARRANTIES SHALL APPLY.

Should you have any questions or problems concerning this product, please contact our customer service department at:

Customer Support:
☎ 1-877-768-8483 (Toll Free)
✉ polaroidsupport@southern telecom.com

Monday - Thursday: 9AM - 5PM (EST)
Friday: 9AM - 3PM (EST)