

# Panasonic®

## Operating Instruction

### Software (For Setting Up PostScript3 Printer Driver)

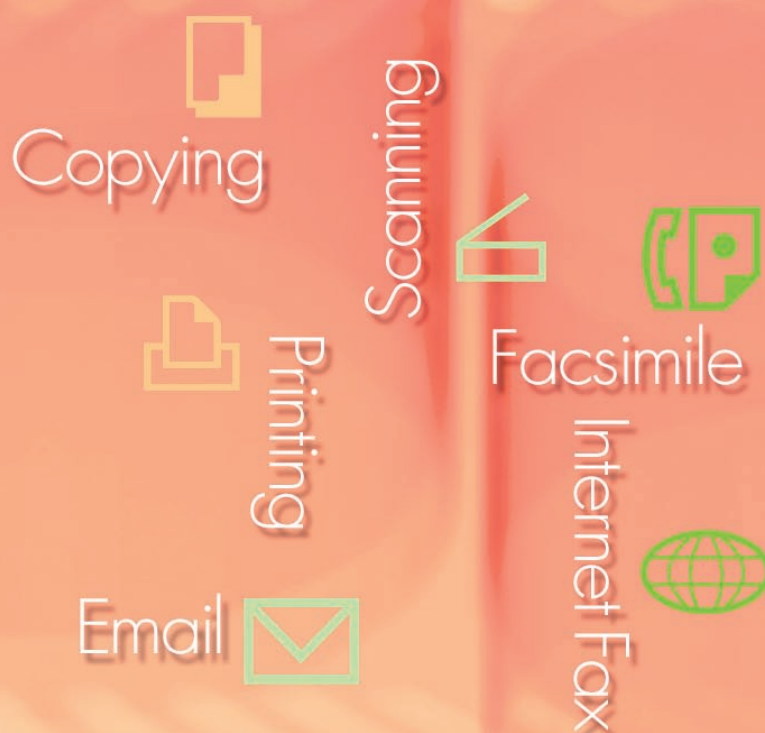
System  
Requirements

General Installation  
Overview

Installing for Windows

Installing for  
Macintosh

Utilities



**WORKIO™**

Before using this software, please carefully read this manual, and keep this documentation in a safe place for future reference.

English

The following trademarks and registered trademarks are used throughout this manual:

Microsoft, MS-DOS, Windows, Windows NT and Windows Server are either registered trademarks or trademarks of Microsoft Corporation in the USA and other countries. Microsoft product screen shot(s) reprinted with permission from Microsoft Corporation. i386, i486, Celeron, Intel Centrino and Pentium are trademarks of Intel Corporation and its subsidiaries.

The USB-IF Logos are trademarks of Universal Serial Bus Implementers Forum, Inc.

TrueType is a registered trademark of Apple Computer, Inc.

Novell, NetWare, IntranetWare, NDS are registered trademarks of Novell, Inc. in the USA and other countries.

PEERLESSPage™ is a trademark of the PEERLESS Systems Corporation; and, PEERLESSPrint and Memory Reduction Technology® are registered trademarks PEERLESS Systems Corporation; and, COPYRIGHT © 2005 PEERLESS Systems Corporation. COPYRIGHT © 2006 Adobe Systems Incorporated. All Rights Reserved; and Adobe® PostScript® 3™.

Universal Font Scaling Technology (UFST) and all typefaces have been licensed from Monotype Imaging Inc.

Agfa® and the Agfa rhombus are registered trademarks of Agfa-Gevaert N.V. registered in the U.S. Patent and Trademark Office and may be registered in other jurisdictions. Monotype® is a registered trademark of Monotype Imaging Inc. registered in the U.S. Patent and Trademark Office and may be registered in other jurisdictions.

ColorSet™, Profile Tool Kit™, Profile Studio™ and Profile Optimizer™ are trademarks of Monotype Imaging Inc. and may be registered in certain jurisdictions.

COPYRIGHT © 2005 Monotype Imaging Inc. All Rights Reserved.

PCL is a trademark of Hewlett-Packard Company.

Adobe, Acrobat, Adobe Reader, Adobe Type Manager, PostScript, PostScript 3 and Reader are either registered trademarks or trademarks of Adobe Systems Incorporated in the United States and/or other countries.

All other product/brand names, trademarks or registered trademarks identified herein are the property of their respective owners.

© 2006 Panasonic Communications Co., Ltd. All Rights Reserved.

Unauthorized copying and distribution is a violation of law.

Published in Japan.

The contents of these Operating Instructions are subject to change without notice.

# Table of Contents

---

<b>System Requirements .....</b>	<b>4</b>
<b>General Installation Overview .....</b>	<b>6</b>
<b>Installing for Windows (for DP-C354/C264/C323/C263/C213) .....</b>	<b>8</b>
■ Install the Drivers and Utilities for Network Printer (Complete Install).....	8
■ Installing the Driver for USB Port Connection .....	12
■ Device Settings .....	18
■ Setting Up the Shared Setting for Server PC .....	19
■ Setting Up the Client PC .....	25
<b>Installing for Windows (for DP-8060/8045/8035) .....</b>	<b>26</b>
■ Install the Drivers and Utilities for Network Printer (Complete Install).....	26
■ Install the Drivers for Parallel Port Connection.....	30
■ Device Settings .....	32
■ Setting Up the Shared Setting for Server PC .....	33
■ Setting Up the Client PC .....	39
<b>Installing for Windows (for DP-8020E/8020P) .....</b>	<b>40</b>
■ Install the Drivers and Utilities for Network Printer (Complete Install).....	40
■ Installing the Driver for USB Port Connection .....	44
■ Device Settings .....	50
■ Setting Up the Shared Setting for Server PC .....	52
■ Setting Up the Client PC .....	58
<b>Installing for Macintosh .....</b>	<b>60</b>
■ Installing for Mac OS 8.6/9.x .....	60
■ Installing for Mac OS X.....	68
■ Device Settings .....	78
<b>Utilities.....</b>	<b>82</b>
■ Job Status Utility.....	82
Installing the Job Status Utility .....	82
Setting Up the Job Status Utility .....	84
■ PS Driver Security Utility .....	85
Installing the PS Driver Security Utility for Windows .....	85
Using the PS Driver Security Utility for Windows .....	88
Installing the PS Driver Security Utility for Macintosh .....	89
Using the PS Driver Security Utility for Macintosh .....	91

## System Requirements

Personal Computer : IBM PC/AT and compatibles (CPU Pentium II or greater is required, Pentium 4 or greater is recommended)

Apple Macintosh computer (PowerPC G3 or greater is required, G4 or greater is recommended)

Operating System : Windows 98<sup>\*1</sup>, Windows Me<sup>\*2</sup>, Windows NT 4.0<sup>\*3</sup> (With Service Pack 3 or later is required), Windows 2000<sup>\*4</sup>, Windows XP<sup>\*5</sup>, Windows Server 2003<sup>\*6</sup>  
Macintosh OS 8.6/9.x<sup>\*7</sup>, Macintosh OS X 10.1-10.4<sup>\*8</sup>

System Memory : The minimum recommended Memory for each OS is as follows:

Windows 98, Windows Me : 128 MB or greater

Windows 2000, Windows XP,  
Windows NT 4.0, Windows

Server 2003 : 256 MB or greater

Macintosh OS 8.6/9.x : 128 MB or greater

Macintosh OS X 10.1-10.4 : 128 MB or greater

Interface : 10Base-T/100Base-TX Ethernet Port/USB Port. (DP-C354/C264/C323/C263/C213, DP-8020E/8020P)  
10Base-T/100Base-TX Ethernet Port/Parallel Port. (DP-8060/8045/8035)

Free Disk Space : 40 MB or greater

CD-ROM Drive : Used for installing the software and utilities from the CD-ROM.

\*1 Microsoft® Windows® 98 operating system (hereafter Windows 98)

\*2 Microsoft® Windows® Millennium Edition operating system (hereafter Windows Me)

\*3 Microsoft® Windows NT® operating system Version 4.0 (hereafter Windows NT 4.0)

\*4 Microsoft® Windows® 2000 operating system (hereafter Windows 2000)

\*5 Microsoft® Windows® XP operating system (hereafter Windows XP)

\*6 Microsoft® Windows Server™ 2003 operating system (hereafter Windows Server 2003)

\*7 Apple Macintosh OS 8.6/9.x

\*8 Apple Macintosh OS X



## Memo

# General Installation Overview

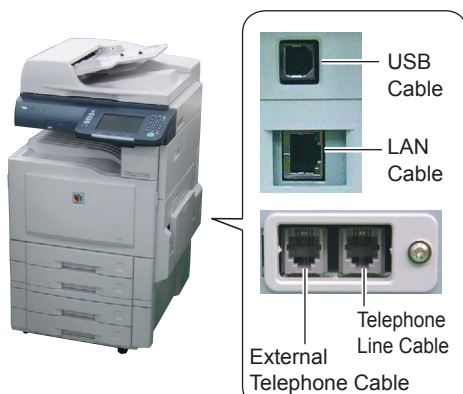
Follow the guidelines in this booklet when installing, and setting up the printer driver. Please read all procedures completely before carrying out.

## 1 Connection

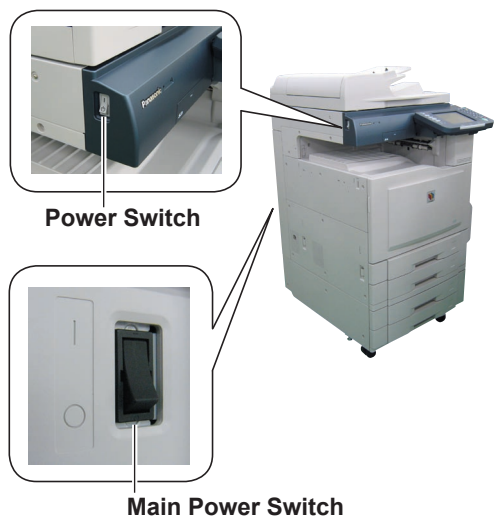
- ① Use a LAN cable when connecting the printer to the Network.  
Use an USB or Parallel cable when connecting as a local printer.
- ② Turn ON ( I ) the Main Power Switch first, and then turn ON ( I ) the Power Switch.

**Main Power Switch** : Rear of the machine.  
**Power Switch** : Left, or Right side of the machine.

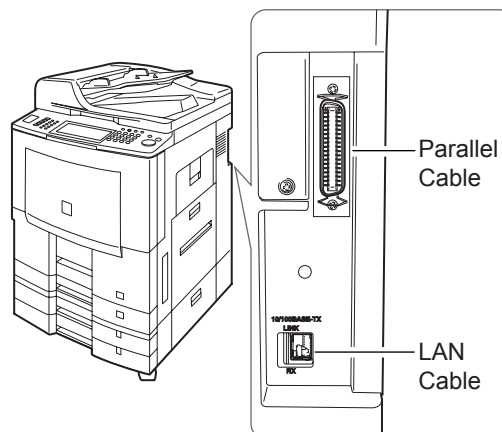
### DP-C354/C264/C323/C263/C213



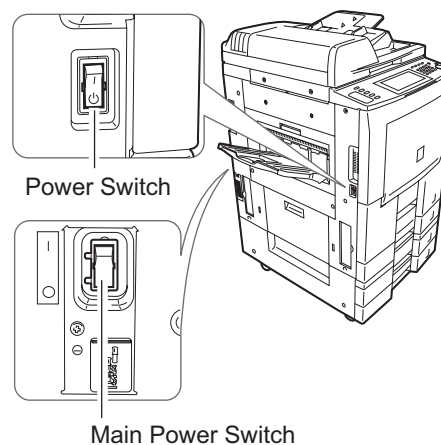
- USB Cable is used for Local Printer connection.



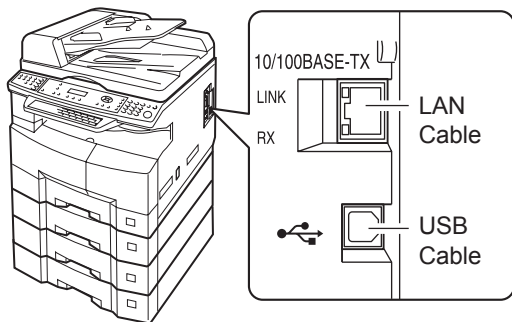
### DP-8060/8045/8035



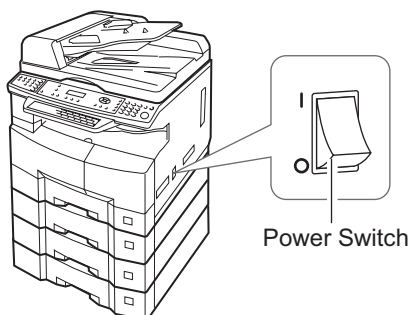
- Parallel Cable is used for Local Printer connection.



## DP-8020E/8020P



- USB Cable is used for Local Printer connection.



## 2 Installation

Install the printer driver and utility softwares. If you want to install only desired software, you can select the install software as "Custom install".

## 3 Setting up

### ■ Network Connection

If your PC connection environments is at Server-Client connection, first of all, please install the driver to the server PC. And then, install driver to client PC. Next, setup each PC.

#### For Windows OS

- Shared Setting
- Setting Up for Client

#### For Mac OS

- Create desktop (for Mac OS ver8 or 9)
- Printer List Setting (for Mac OS X)
- Device Setting

### ■ Local Connection

- Device Setting

### NOTE

- When using the Printer on the Network network environment, install the IPX/SPX setup wizard. Refer to the Operating Instruction (For IPX-SPX setup wizard) on the provided CD-ROM.
- When there are two printer drivers (for Network Port Connection and Parallel or USB Port Connection) for the same model, each printer driver can be used normally. The printer driver can be selected from the Printer List of the Print Screen within the application software.
- Network Print Server Connection Printer  
The Print Server name will be automatically added. On Peer to Peer Connection (Direct Connection) the Print Server name is not added. Change the Printer Name using the Windows Printer Settings for convenience.

## 4 Utilities

### Job Status Utility (Only Windows OS)

A Job Completion Notice will be displayed on the PC screen when the Copy/Print Job is completed.

### PS Driver Security Utility

The setting of Printer Driver, etc., is protected by PS Driver Security Utility.

### Others

Please proceed installation, according to the instruction of the screen.

# Installing for Windows (for DP-C354/C264/C323/C263/C213)

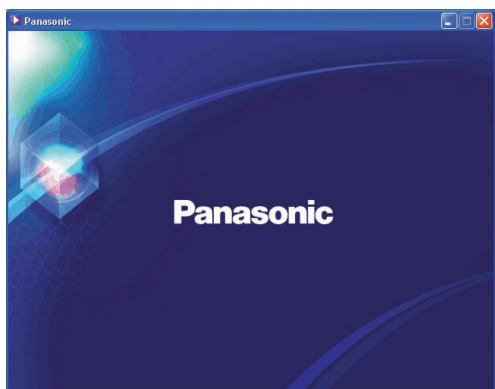
## Install the Drivers and Utilities for Network Printer (Complete Install)

Install the PostScript3 driver. Then install the Job Status Utility and PostScript Security Utility automatically. The printer must be connected to the network.

### NOTE

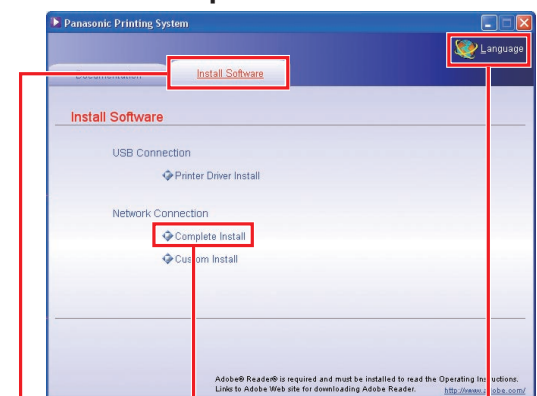
PCL6 Printer Driver is not contained in the installer of DP-C354/C264/C323/C263/C213.

- 1 Insert the “**Panasonic Printing System**” CD-ROM.  
The opening screen is displayed.



- If the CD-ROM does not launch automatically, double click “**My Computer**” on the Desktop or on the Start menu, and then double click the CD-ROM icon.

- 2 You can select the “**Documentation**” or “**Install Software**”. Click the “**Install Software**” tab, and then select “**Complete Install**”.

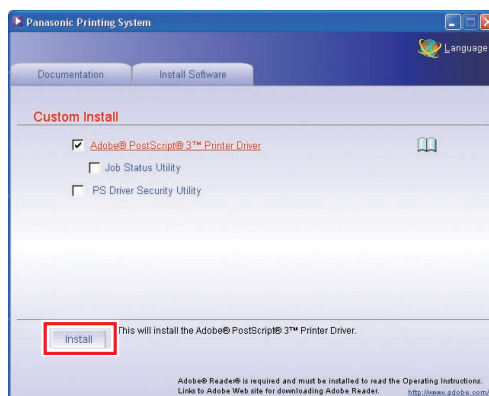


Language Selection

- Screen Language will be automatically selected using with your PC language. If you want to change the language, click “**Language**”, and then choose the desired language and click “**OK**”.

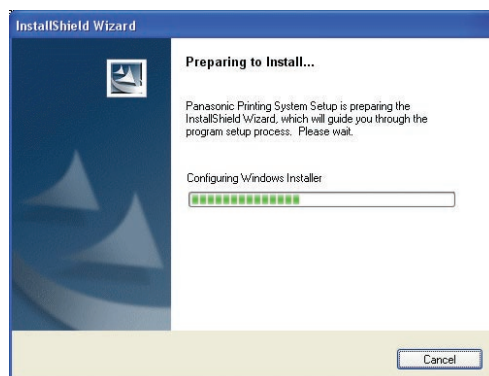


- If you choose “**Custom Install**”, you can select the desired Software. Click “**Install**”, and selected software will be installed.

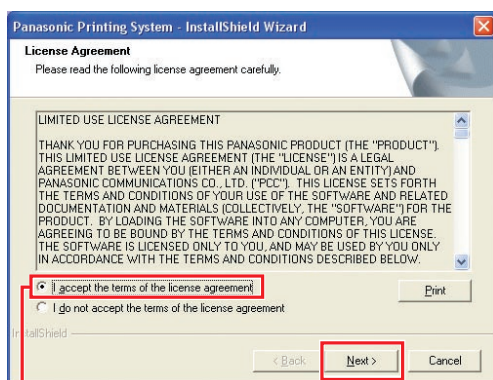


- You can install the applications you wish to install by checking the box next to the software names. Also, uncheck the box if you do not want to install any of the displayed software.

- 3 The InstallShield Wizard screen is displayed.

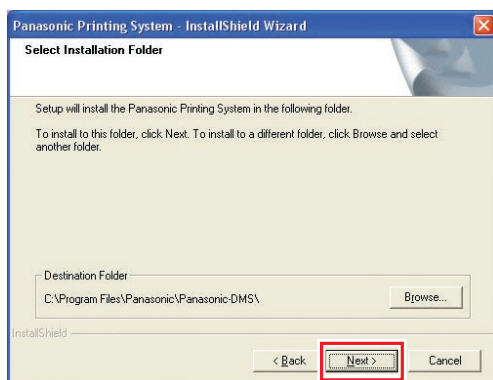


## 4 Check "I accept the terms of the license agreement", and then click "Next".



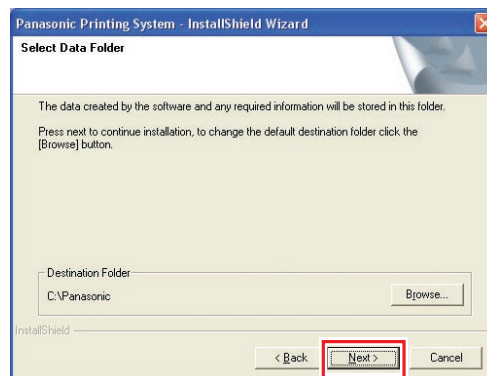
- Make sure that your printer is connected to the network properly, and the Power Switch is ON before clicking "Next".

## 5 Click "Next".



- Above Screen will not be shown when another model's **Panasonic Document Management System** has been installed.
- If you wish to change the folder, click "Browse", and then the desired folder to install.

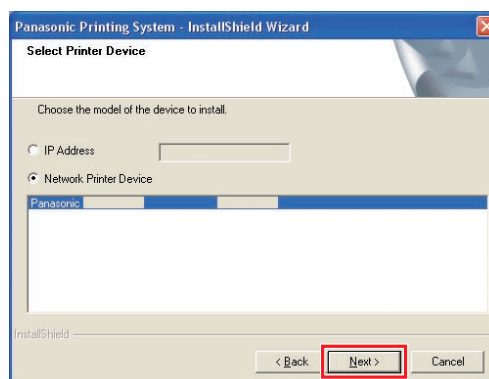
## 6 Click "Next".



- Above Screen will not be shown when another model's **Panasonic Document Management System** has been installed.
- If you wish to change the folder, click "Browse", and then the desired folder to install.

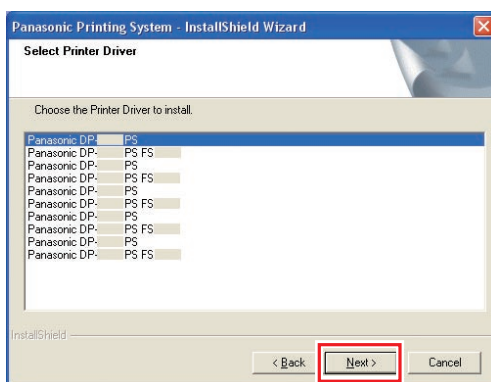
## 7 The Wizard automatically searches for printers connected with your network, and displays the found printers in the **Network Printer Device** window.

Select a printer, and then click "Next".



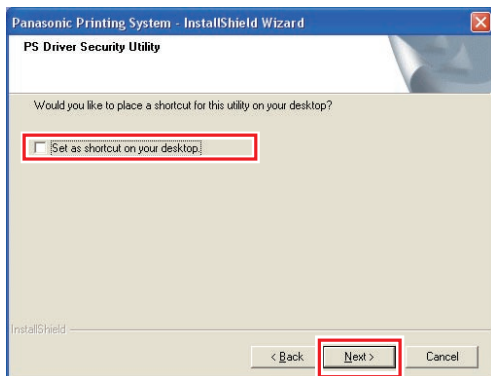
- Only the printers connected with your network can be used as a network printer.

- If your printer has not been connected to the network yet, enter its allocated IP Address on the “Select Printer Device” screen of step7 of previous page. Then it will display the printers as following figure. Then select a printer and click “**Next**”.

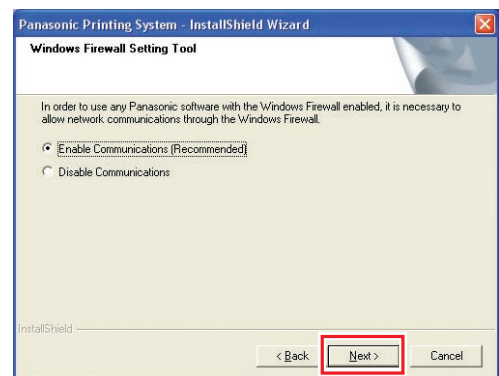


- Panasonic DP-Cxxx :  
Machine without a Finisher option or with the 1-bin Saddle Stitch Finisher (DA-FS356) or Outer Tray (DA-XT320).
- Panasonic DP-Cxxx + FS350 :  
Machine with the 1-bin Stapler Finisher (DA-FS350) or Outer Tray (DA-XT320).

- 8 If you want to place the security utility's shortcut on your desktop, check the box. Click “**Next**”.

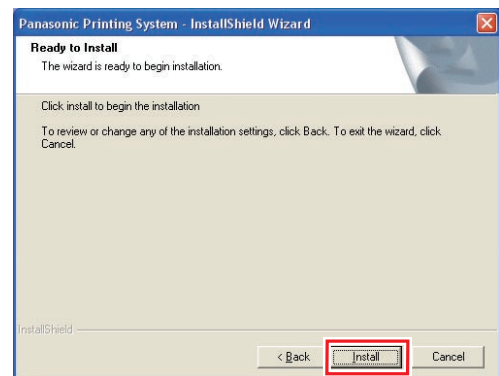


- 9 Select “**Enable Communications (Recommended)**”, and then click “**Next**”.



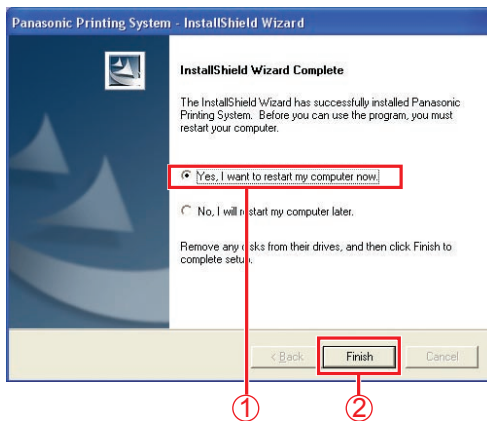
- Above screen only displays when you are installing the Job Status Utility on Windows XP (Service Pack 2 or later), or Windows 2003 Server (Service Pack 1 or later).

- 10 Click “**Install**”.



# 11

Check **“Yes, I want to restart my computer now.”**, and then click **“Finish”**.



- If you cannot shut down the computer immediately, choose **“No, I will restart my computer later.”**. However, the new setting is only applied after rebooting your computer.

Memo:

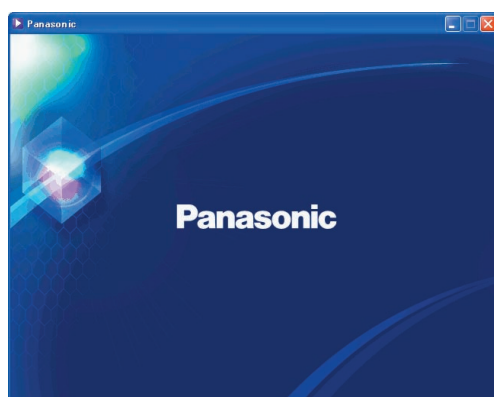


## Installing the Driver for USB Port Connection

### ATTENTION

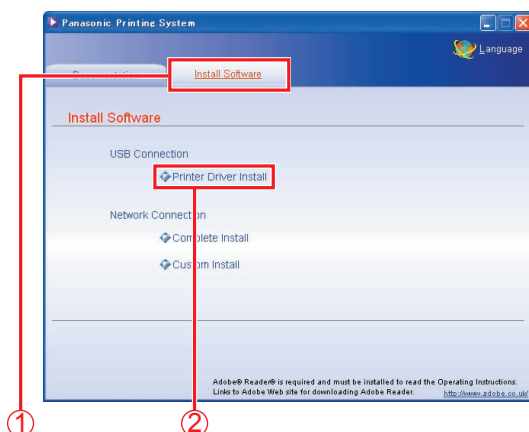
Do not connect the USB cable until you reach the step 8 (A, B, C)

- 1 Insert the **“Panasonic Printing System”** CD-ROM.  
The Panasonic opening screen is displayed.



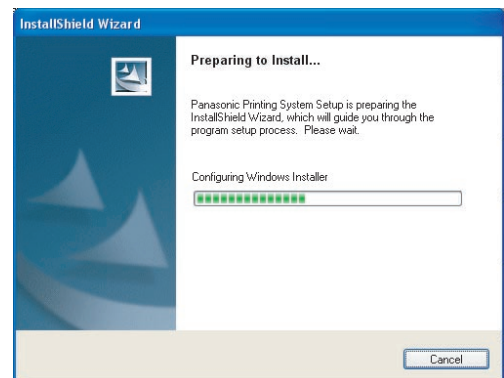
- If the CD-ROM does not launch automatically, double-click **“My Computer”** on the Desktop or on the Start menu, and then double-click the CD-ROM icon.

- 2 Click the **“Install Software”** tab, and then select **“Printer Driver Install”**.

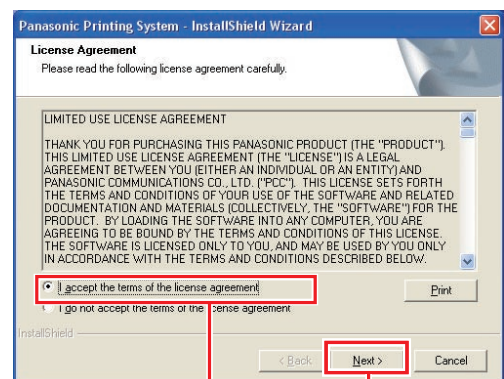


- USB connection **“Printer Driver Install”** is not selectable with Windows NT 4.0.

- 3 The Install Shield Wizard screen is displayed.



- 4 Check **“I accept the terms of the license agreement”**, and then click **“Next”**.

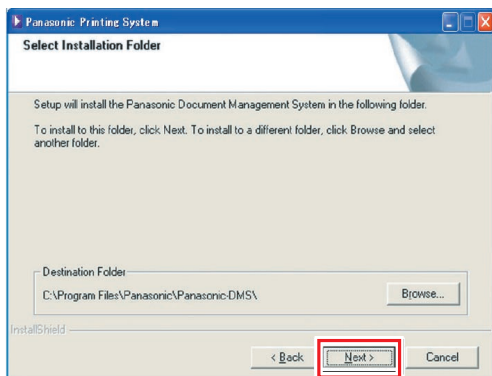


1

2

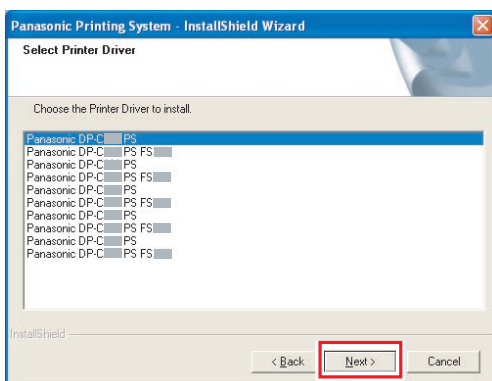


## 5 Click "Next".



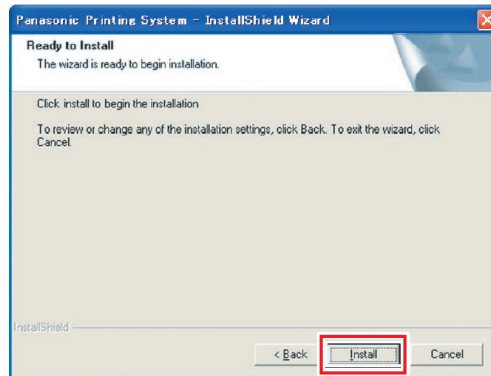
- Above Screen will not be shown if there is other model's **Panasonic Document Management System** installed.
- If you wish to change the folder, click "**Browse**", and then the desired folder to install.

## 6 Select the Printer Driver that you want to install, and then click "Next".



- **Panasonic DP-Cxxx :**  
Machine without a Finisher option or with the 1-bin Saddle Stitch Finisher (DA-FS356) or Outer Tray (DA-XT320).
- **Panasonic DP-Cxxx + FS350 :**  
Machine with the 1-bin Stapler Finisher (DA-FS350) or Outer Tray (DA-XT320).

## 7 Click "Install".



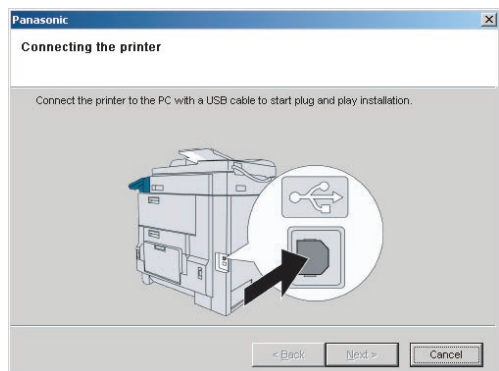
**Windows 98 / Windows Me**  
go to steps 8A and 9

**Windows 2000**  
go to steps 8B and 9

**Windows XP / Windows Server 2003**  
go to steps 8C and 9

## 8A <Windows 98 / Windows Me>

Connect the USB cable to your machine.

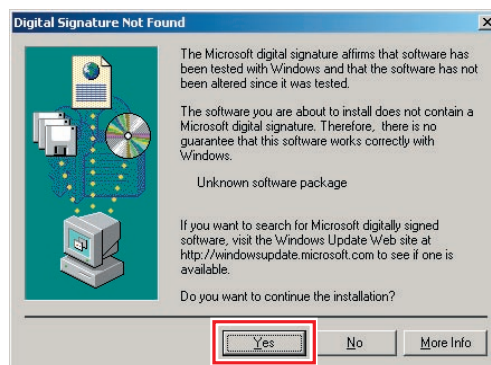


- Above screen will disappear automatically, if a printer is added.

## 8B <Windows 2000>

Click "Yes".

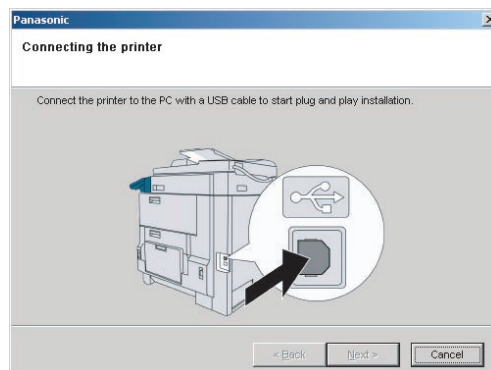
-1



## 8B

Connect the USB cable to your machine.

-2

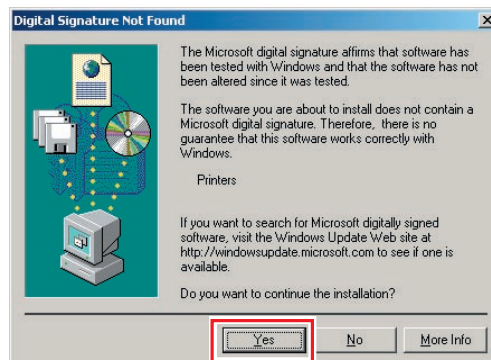


- Above screen will disappear automatically, if a printer is added.

## 8B

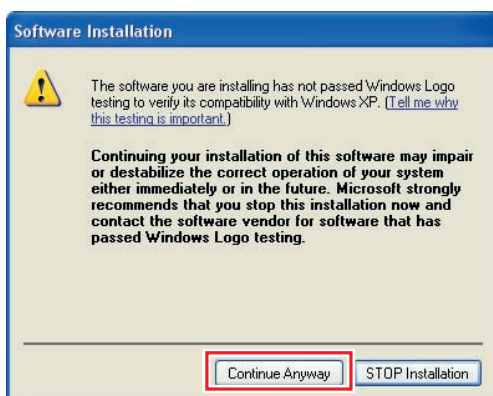
Click "Yes".

-3



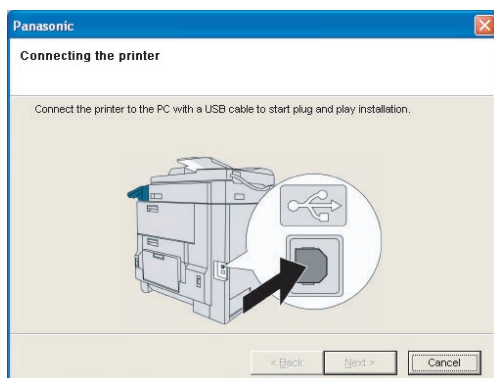
**8C** <Windows XP / Windows Server 2003>  
Click "Continue Anyway".

-1



**8C** Connect the USB cable to your machine.

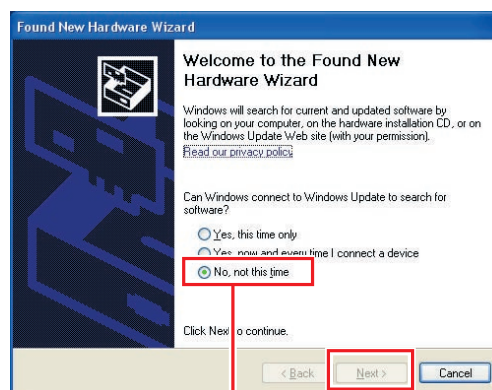
-2



- Above screen will disappear automatically, if a printer is added.

**8C** Select "No, not this time", and then click "Next".

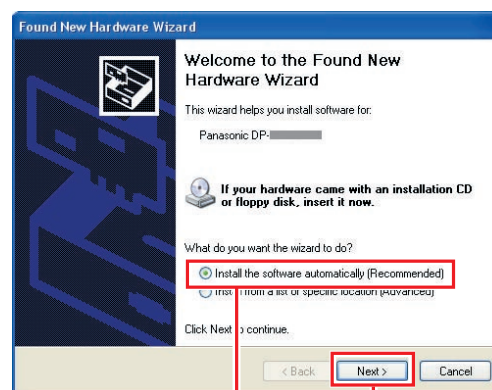
-3



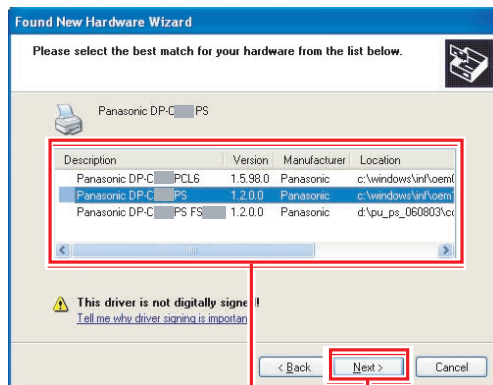
- Above screen will be displayed when you have installed the Windows XP Service Pack 2.

**8C** Select "Install the software automatically (Recommended)", and then click "Next".

-4



- 8C-5** If you have a previous version of the Printer Driver installed, select the latest version of the “.inf” file, and then click **“Next”**.

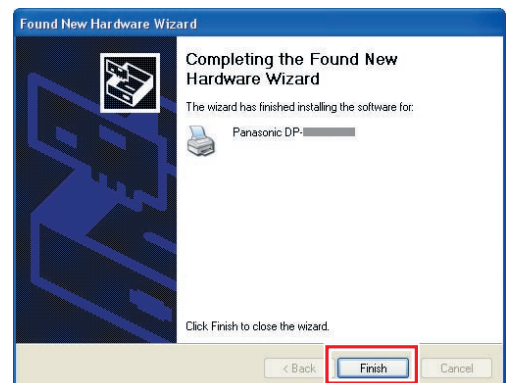


- Above screen will not be displayed when installing the Printer Driver for the first time.

- 8C-6** Click **“Continue Anyway”**.

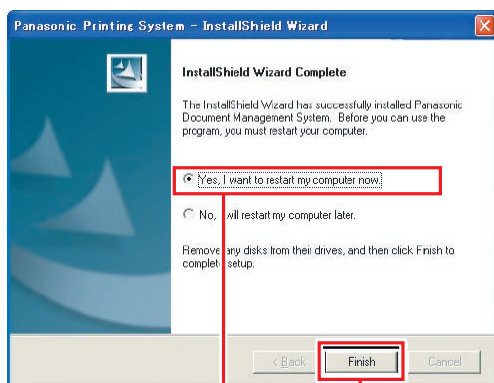


- 8C-7** Click **“Finish”**.



9

Check **“Yes, I want to restart my computer now.”**, and then click **“Finish”**.



- If you cannot shut down the computer immediately, choose **“No, I will restart my computer later.”**. However, the new setting is only applied after rebooting your computer.

Memo:

## Device Settings

Setting up the Paper Feeder, Hard Disk Drive, Finisher, and etc..

- 1 Open the Printer Dialog Box using the following procedures.

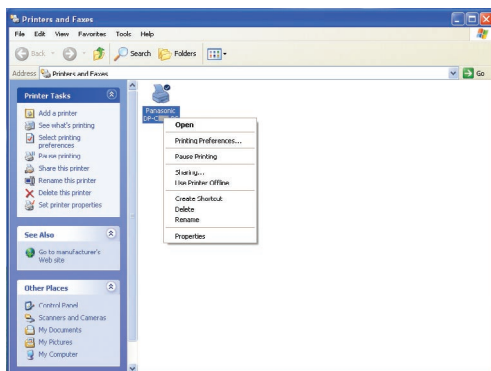
Windows XP/Server 2003 :

Select **"Start"** → **"Settings"** → **"Printers and Faxes"**

Other Windows OS :

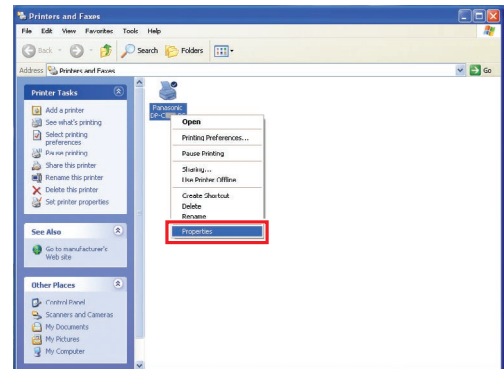
Select **"Start"** → **"Settings"** → **"Printers"**

- 2 Right-click the printer that you want to configure.

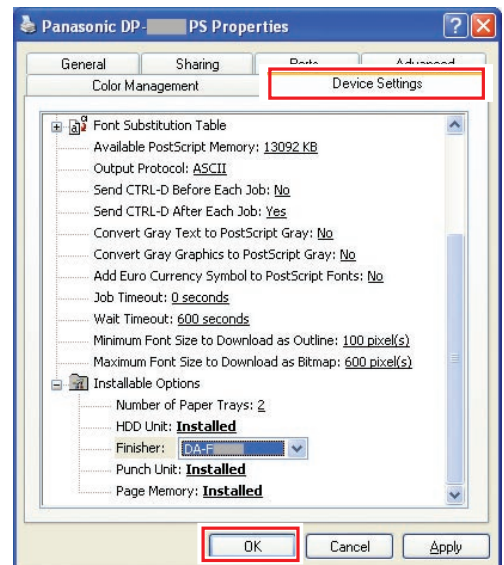


- Above screen is different according to the each Windows OS.

- 3 Click **"Properties"**.



- 4 Select **"Device Settings"** or **"Device Options"** tab, and configure the optional devices, and then click **"OK"**.

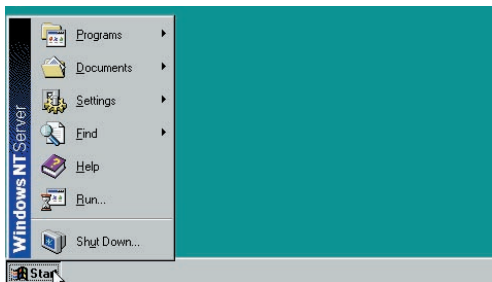


## Setting Up the Shared Setting for Server PC

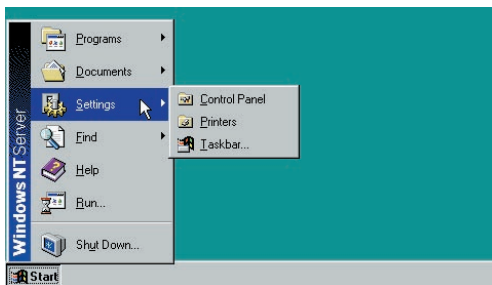
Add the Printer Driver if your client OS is different from the Network Print Server. Using the **PrnCopy.exe** before installing the Printer Driver. On the Panasonic Printing System CD-ROM, there is a tool to create the Printer Driver for various Windows OS. Open the CD-ROM with the Explorer, Go **"Tools"** → **"PrnCopy"** folder. In the **"PrnCopy"** folder, double click the **PrnCopy.exe** file, a folder will be created on your Desktop. Please select an appropriate printer driver in the folder when you add the Printer Driver for a client OS.

### Setting Up the Shared Setting for Windows NT Server.

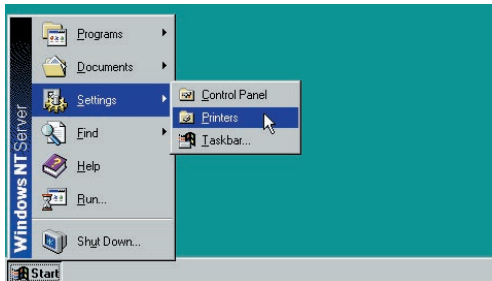
1 Click **"Start"**.



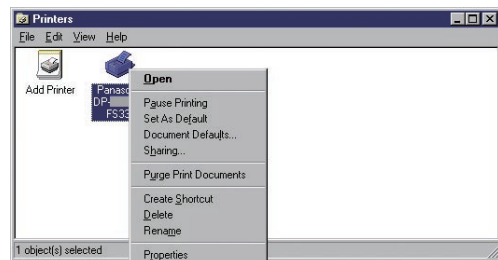
2 Select **"Settings"**.



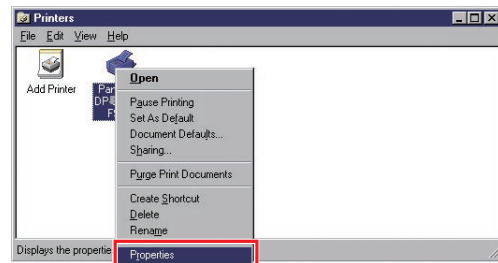
3 Click **"Printers"**.



4 Right-Click the printer that you want to share.

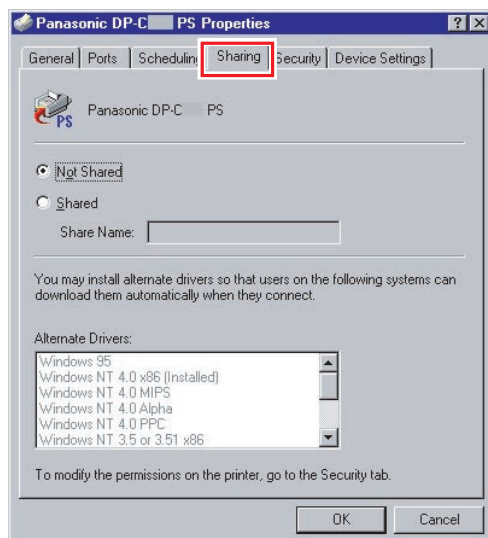


5 Click **"Properties"**.

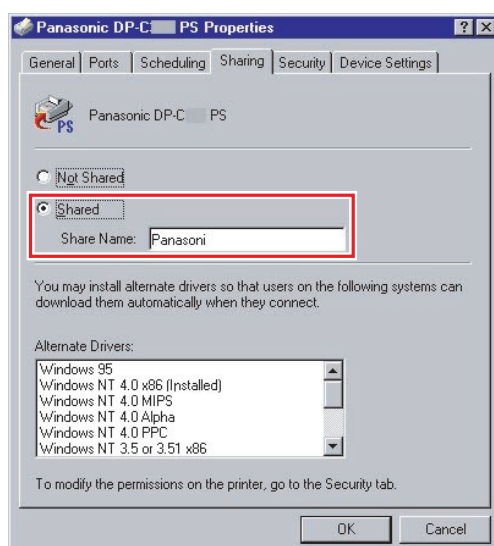




## 6 Click on the “Sharing” tab.



## 7 Check “Shared”, and then enter the Share Name. Ex: Panasoni



### NOTE

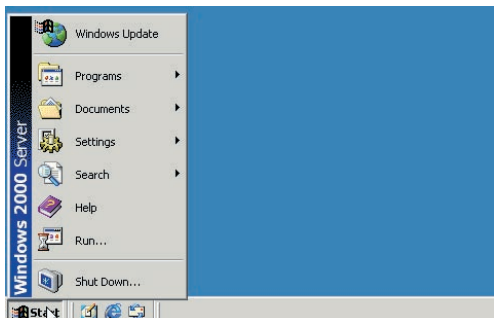
If you need to install an alternate printer driver for your client OS, select the type of OS from the alternate driver list, and click [OK]. You can manually add the Printer Driver by following the instructions on the screen. To easily create the Printer Drivers for various OS, use the **PrnCopy.exe** before the installation. (See page 19)

## 8 Click “OK” to close the screen.

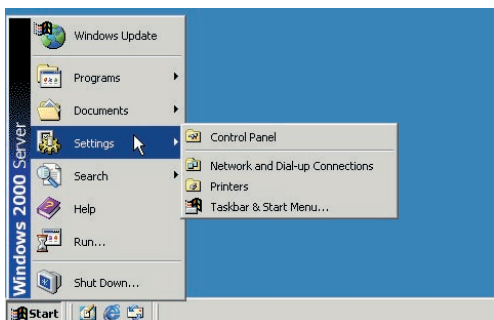


## Setting Up the Shared Setting for Windows 2000 Server.

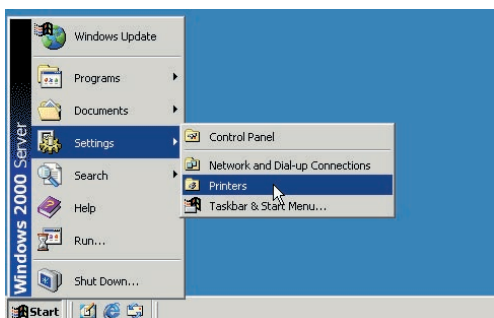
1 Click **"Start"**.



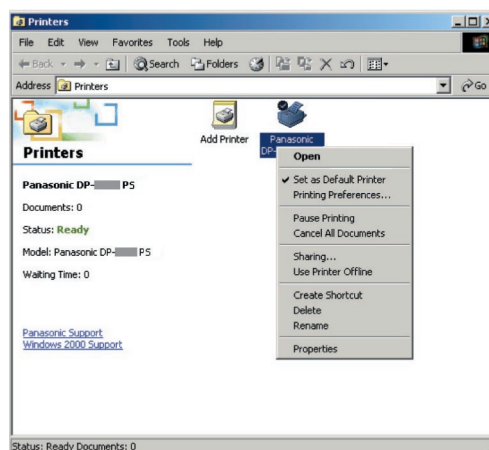
2 Select **"Settings"**.



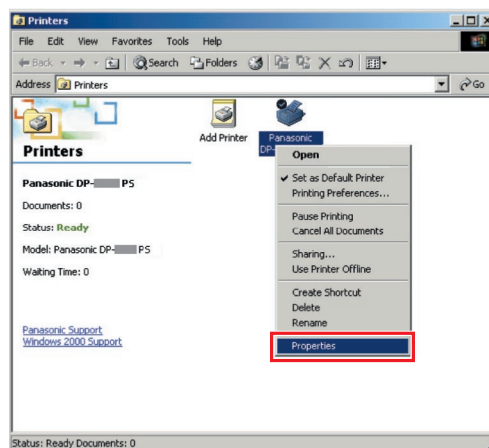
3 Click **"Printers"**.



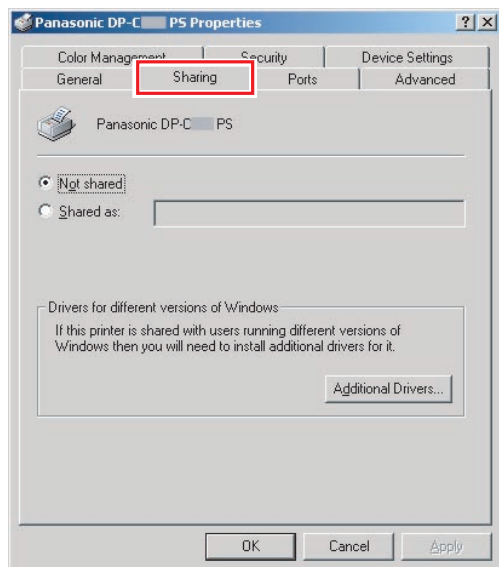
4 Right-Click the printer that you want to share.



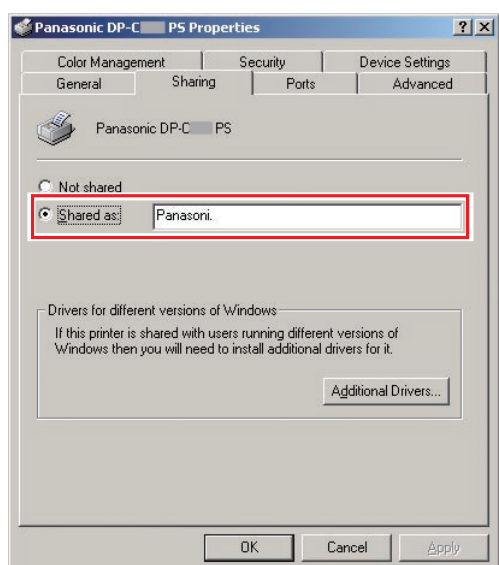
5 Click **"Properties"**.



## 6 Click on the “Sharing” tab.



## 7 Check “Shared as”, and then enter the Share Name. Ex: Panasoni



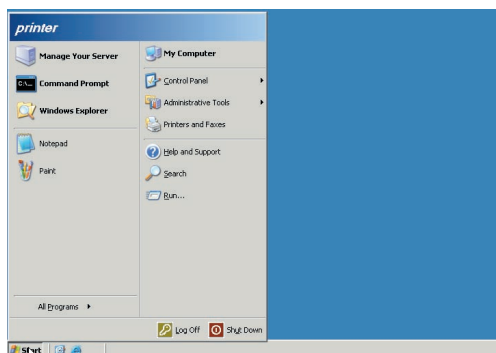
### NOTE

If you need to install an alternate printer driver for your client OS, click [**Additional Drivers...**], you can manually add the Printer Driver by following the instructions on the screen. To easily create the Printer Drivers for various OS, use the **PrnCopy.exe** before the installation. (See page 19)

## 8 Click “OK” to close the screen.

## Setting Up the Shared Setting for Windows Server 2003.

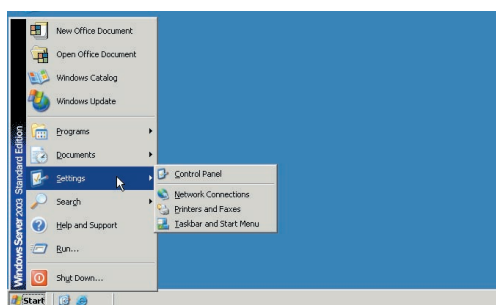
### 1 Click **"Start"**. (Category View Mode)



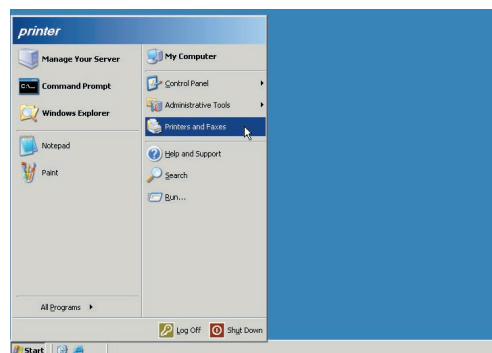
(Classic View Mode)



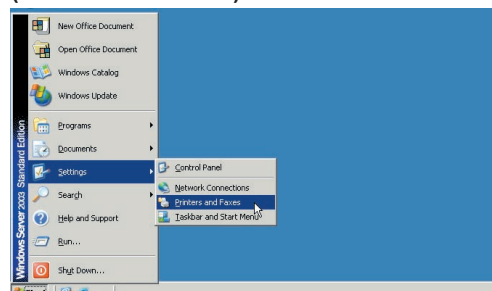
### 2 Select **"Settings"**. (Classic View Mode)



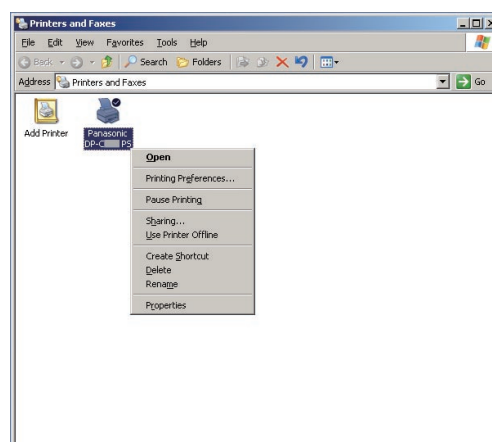
### 3 Click **"Printers and Faxes"**. (Category View Mode)



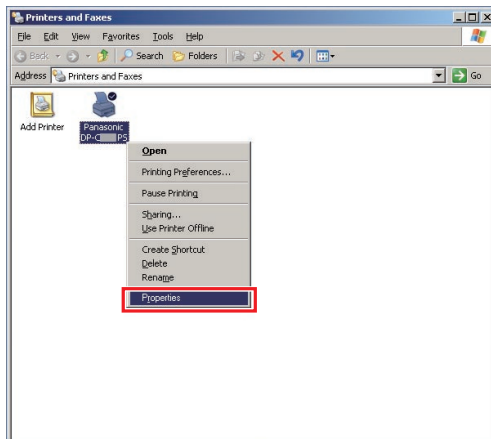
(Classic View Mode)



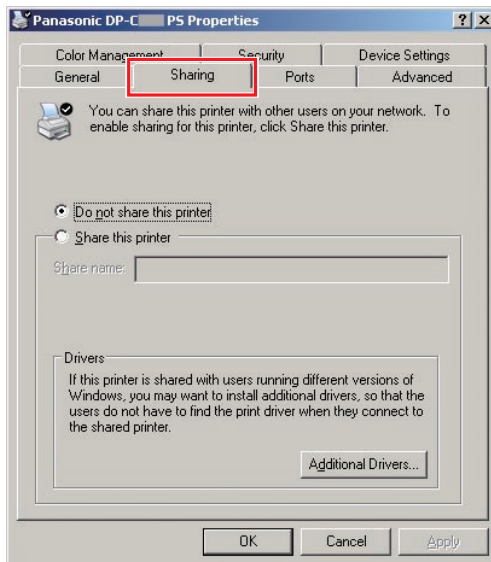
### 4 Right-Click the printer that you want to share.



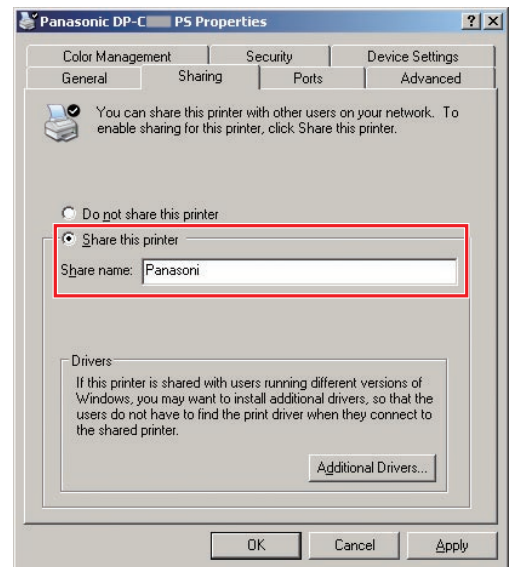
## 5 Click “Properties”.



## 6 Click on the “Sharing” tab.



## 7 Check “Share this printer”, and then enter the Share Name. Ex: Panasonic



### NOTE

If you need to install an alternate printer driver for your client OS, click [**Additional Drivers...**], you can manually add the Printer Driver by following the instructions on the screen. To easily create the Printer Drivers for various OS, use the **PrnCopy.exe** before the installation. (See page 19)

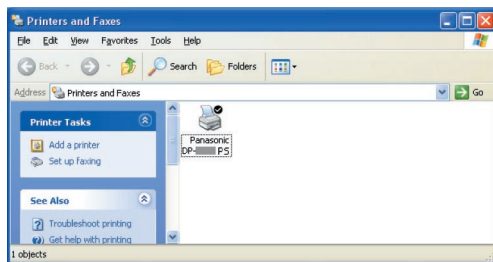
## 8 Click “OK” to close the screen.

## Setting Up the Client PC

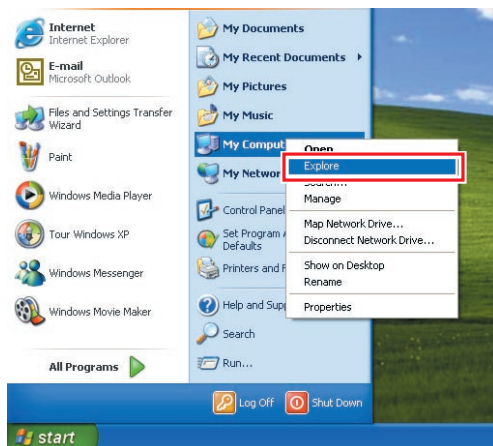
The illustrations shown for the previous steps are for Windows XP.

The procedures for other Windows Operating Systems are basically the same, even though some of the details may differ.

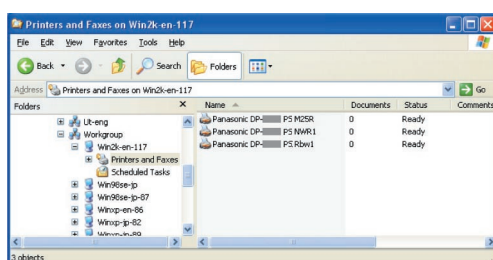
- 1 Open the Printers and Faxes window.



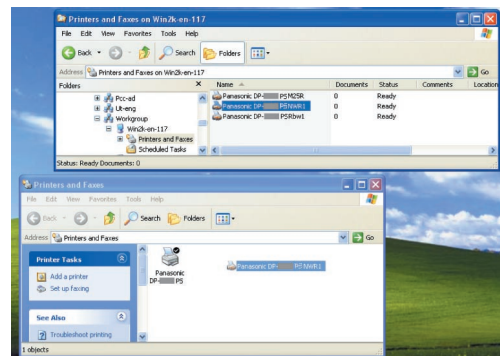
- 2 Click "Start", right-click "My Computer", and then select "Explore".



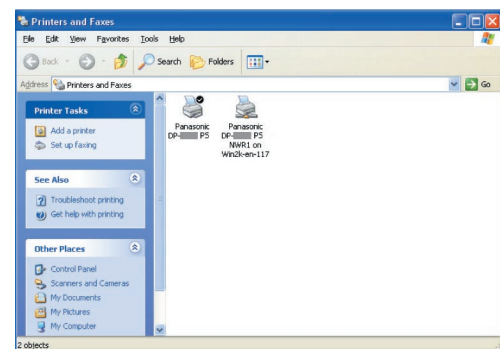
- 3 Select the Shared Printer on your Printer Server.



- 4 Drag-and-drop the printer icon onto the Printer and Faxes window.



- 5 Verify that the Printer icon is copied onto the Printer and Faxes window.

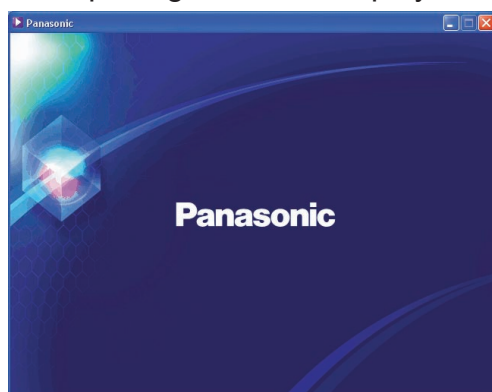


# Installing for Windows (for DP-8060/8045/8035)

## Install the Drivers and Utilities for Network Printer (Complete Install)

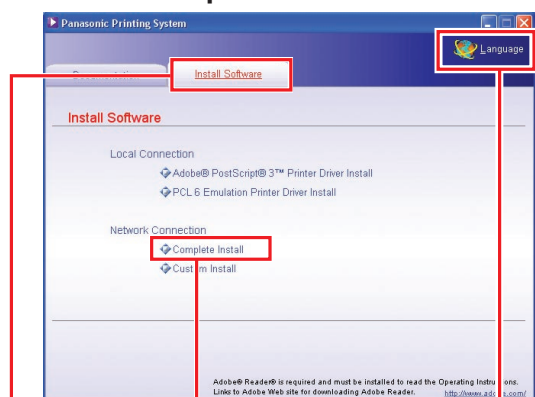
Install the PostScript3 driver and PCL6 Emulation driver. Then install the Job Status Utility and PostScript Security Utility automatically. It is necessary to be connected the printer with the network.

- 1 Insert the “**Panasonic Printing System**” CD-ROM.  
The opening screen is displayed.



- If the CD-ROM does not launch automatically, double click “**My Computer**” on the Desktop or on the Start menu, and then double click the CD-ROM icon.

- 2 You can select the “**Documentation**” or “**Install Software**”. Click the “**Install Software**” tab, and then select “**Complete Install**”.

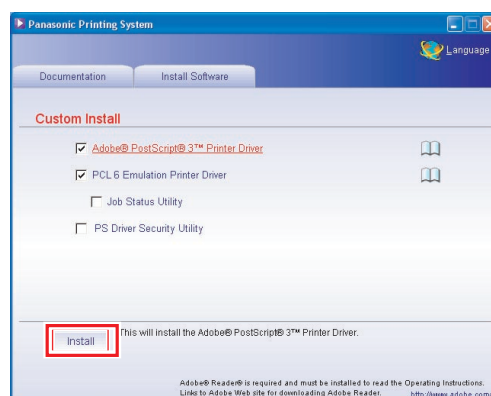


### Language Selection

- Screen Language will be automatically selected using with your PC language. If you want to change the language, click “**Language**”, and then choose the desired language and click “**OK**”.

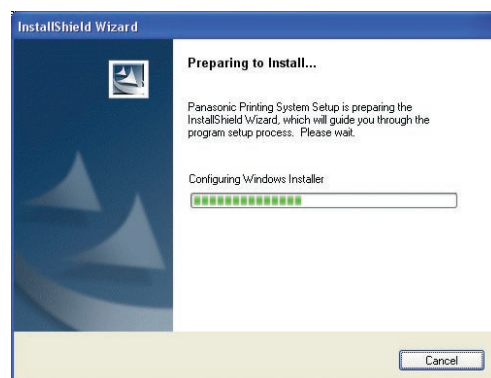


- If you choose “**Custom Install**”, you can select the desired Software. Click “**Install**”, and selected software will be installed.



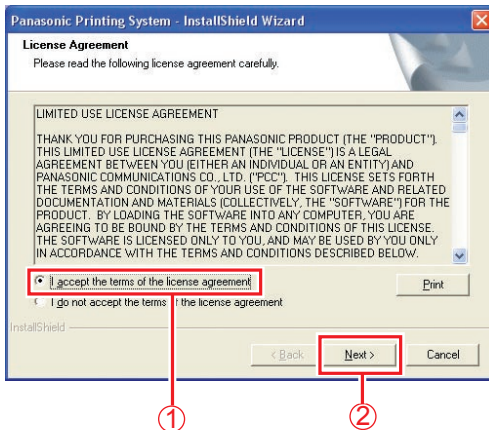
- You can install the applications you wish to install by checking the box next to the software names. Also, unmark the check box if you do not want to install any of the displayed software.

- 3 The InstallShield Wizard screen is displayed.



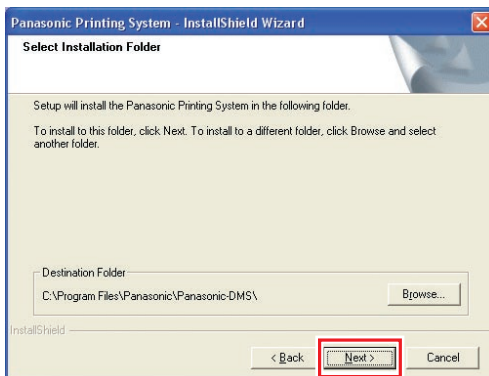


## 4 Check "I accept the terms of the license agreement", and then click "Next".



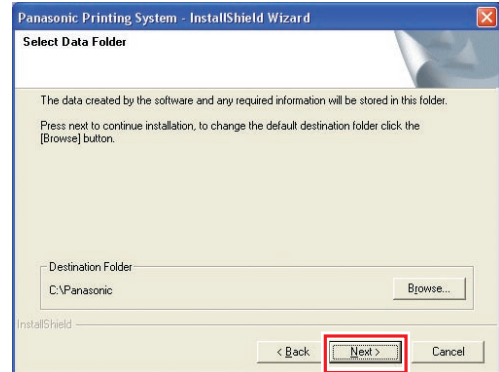
- Make sure that your printer is connected to the network properly, and the Power Switch is ON before clicking "Next".

## 5 Click "Next".



- Above Screen will not be shown when another model's **Panasonic Document Management System** has been installed.
- If you wish to change the folder, click "Browse", and then the desired folder to install.

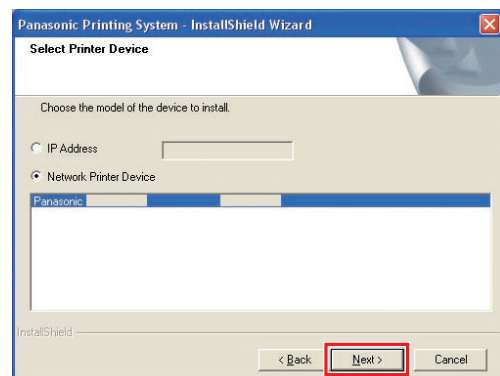
## 6 Click "Next".



- Above Screen will not be shown when another model's **Panasonic Document Management System** has been installed.
- If you wish to change the folder, click "Browse", and then the desired folder to install.

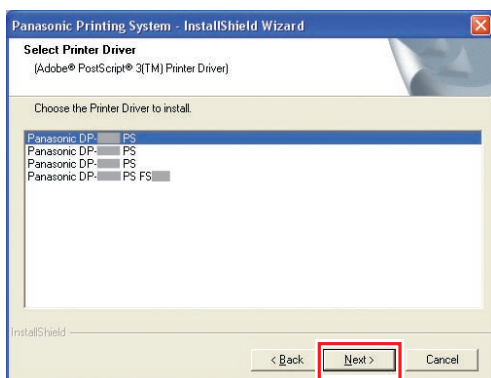
## 7 The Wizard automatically searches for printers connected with your network, and displays the found printers in the **Network Printer Device** window.

Select a printer, and then click "Next".



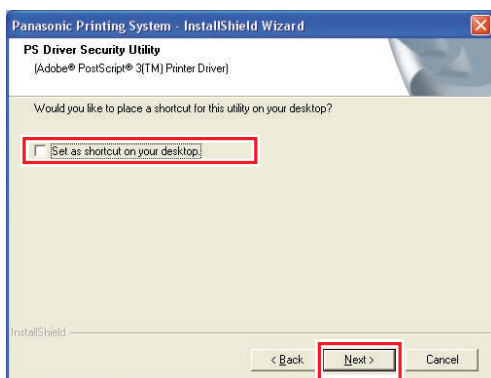
- Only the printers connected with your network can be used as a network printer.

- If your printer has not been connected to the network yet, enter its allocated IP Address on the “Select Printer Device” screen of step7 of previous page. Then it will display the printers as following figure. Then select a printer and click “**Next**”.

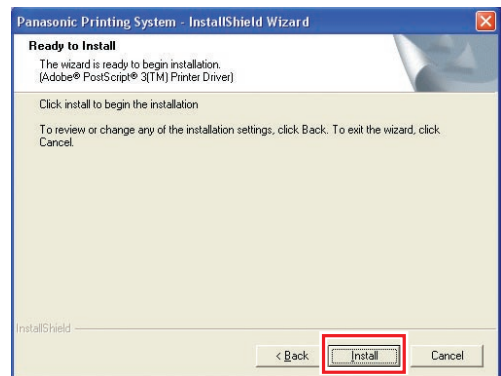


- Panasonic DP-8035 + FS330 : Machine with the 2-bin Stapler Finisher (DA-FS330)

- 8 If you want to place the security utility's shortcut on your desktop, check the box. Click “**Next**”.



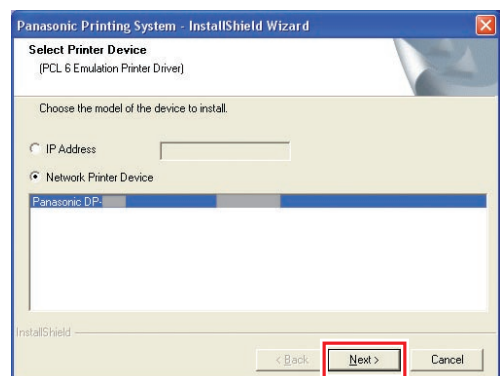
- 9 Click “**Install**”.



- 10 The Wizard automatically searches for printers connected with your network, and displays the found printers in the **Network Printer Device** window.

Select a printer, and then click “**Next**”.

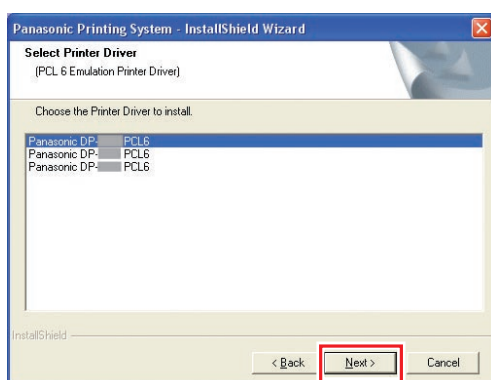
- Installation of “PCL6 Emulation Printer Driver” begins from here.



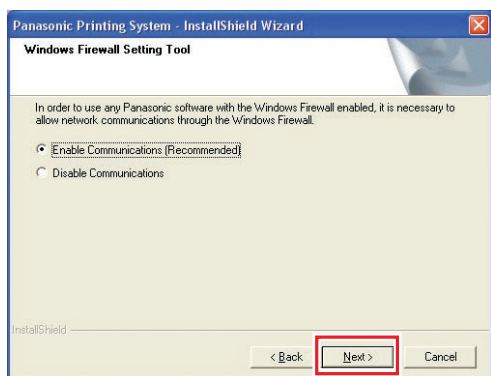
- Only the printers connected with your network can be used as a network printer.



- If your printer has not been connected with the network yet, enter its allocated IP Address on the “Select Printer Device” screen of step10 of previous page. Then it will display the printer device as following figure. Select a printer, and click “Next”.

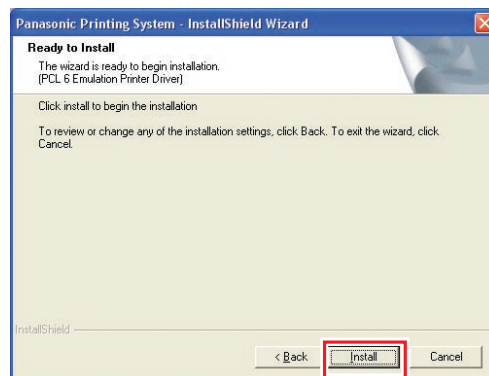


## 11 Select “Enable Communications (Recommended)”, and then click “Next”.

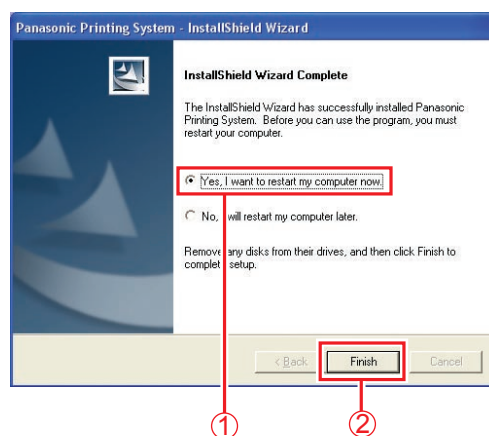


- Above screen only displays when you are installing the Job Status Utility on Windows XP (Service Pack 2 or later), or Windows 2003 Server (Service Pack 1 or later).

## 12 Click “Install”.



## 13 Check “Yes, I want to restart my computer now.”, and then click “Finish”.

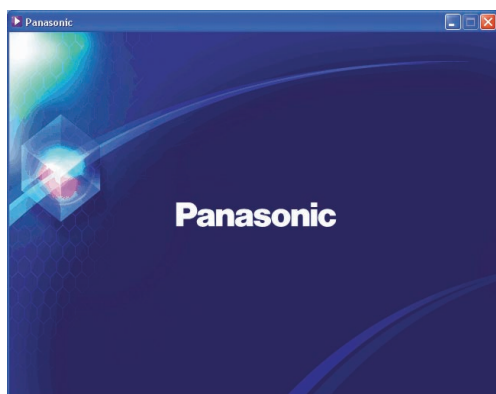


- If you cannot shut down the computer immediately, choose “No, I will restart my computer later.”. However, the new setting is only applied after rebooting your computer.

## Install the Drivers for Parallel Port Connection

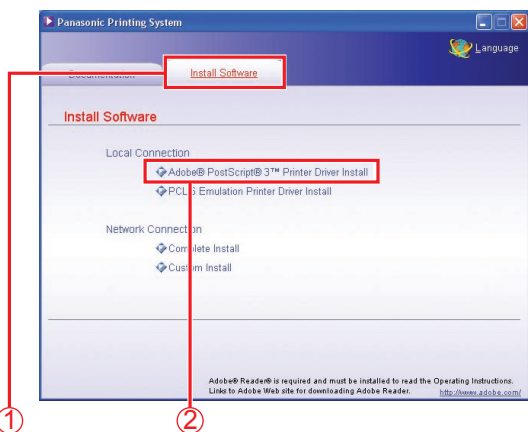
Beforehand, connect the printer to PC's parallel port with the printer cable. (see page 6)

- 1 Insert the **"Panasonic Printing System"** CD-ROM.  
The opening screen is displayed.

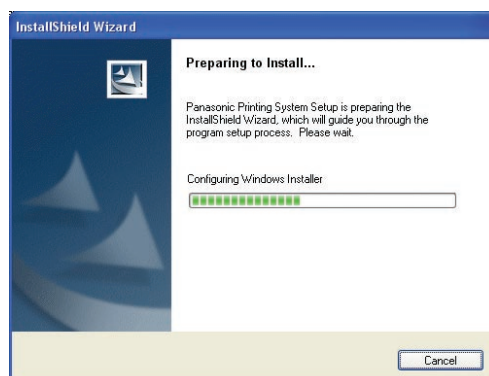


- If the CD-ROM does not launch automatically, double-click **"My Computer"** on the Desktop or on the Start menu, and then double-click the CD-ROM icon.

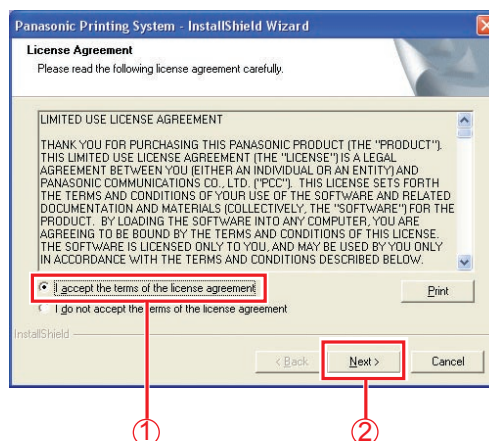
- 2 You can select the **Documentation** or **Install Software**. Click the **Install Software** tab, and then select **Adobe PostScript3 Printer Driver Install** or **PCL 6 Emulation Printer Driver install**.



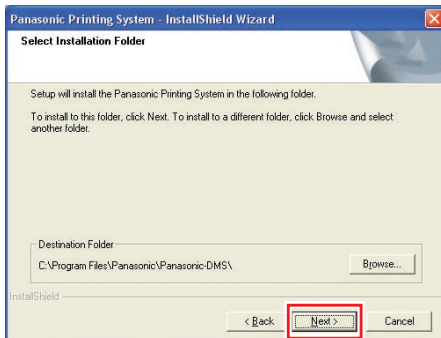
- 3 The InstallShield Wizard screen is displayed.



- 4 Check **"I accept the terms of the license agreement"**, and then click **"Next"**.

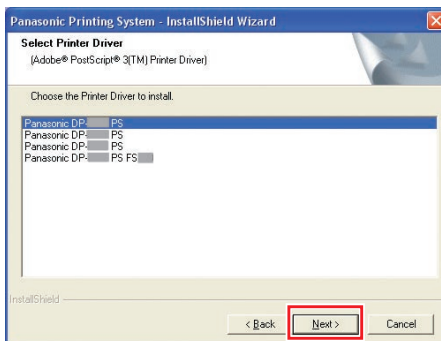


## 5 Click "Next".

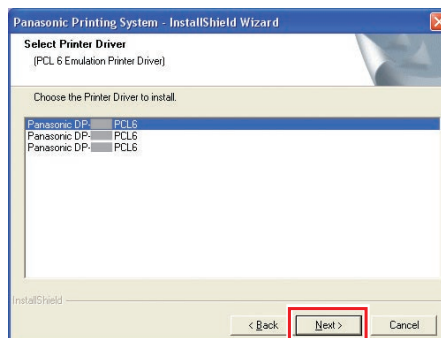


- Above Screen will not be shown when another model's **Panasonic Document Management System** has been installed.
- If you wish to change the folder, click "**Browse...**", and then the desired folder to install.

## 6 Select the Printer Driver that you want to install, and then click "Next". A screen changes with selected Printer Driver.

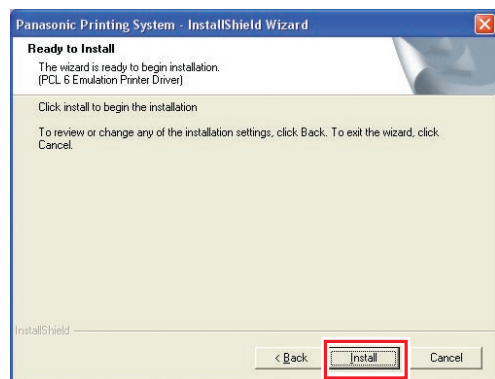


- When you select the PostScript3 Driver Install.
- Panasonic DP-8035 + FS330 : Machine with the 2-bin Stapler Finisher (DA-FS330)

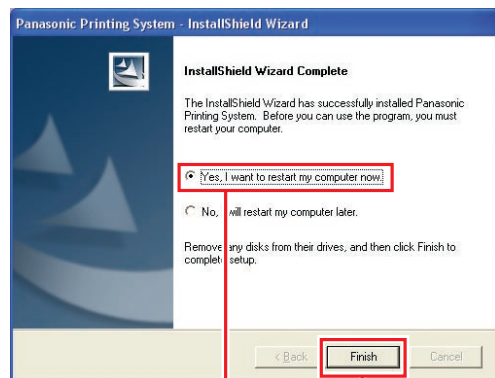


- When you select the PCL 6 Emulation Printer Driver Install.

## 7 Click "Install".



## 8 Check "Yes, I want to restart my computer now.", and then click "Finish".



- If you cannot shut down the computer immediately, choose "**No, I will restart my computer later.**". However, the new setting is only applied after rebooting your computer.

## Device Settings

Setting up the Paper Feeder, Hard Disk Drive, Finisher, and etc..

- 1 Open the Printer Dialog Box using the following procedures.

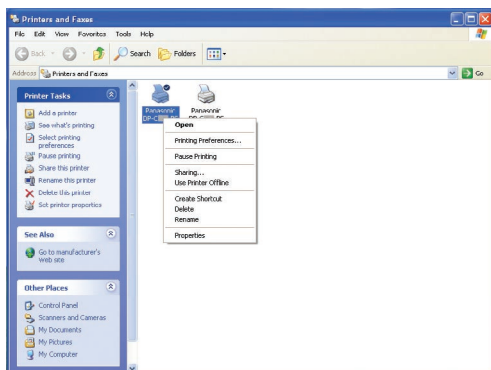
Windows XP/Server 2003:

Select **"Start"** → **"Settings"** → **"Printers and Faxes"**

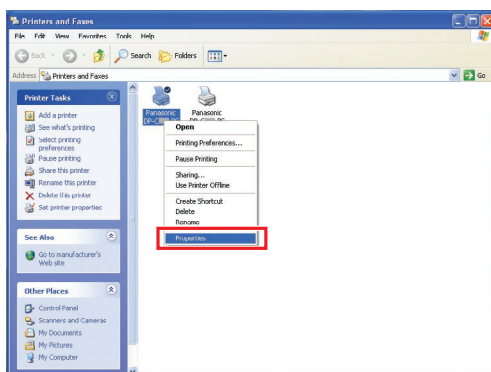
Other Windows OS:

Select **"Start"** → **"Settings"** → **"Printers"**

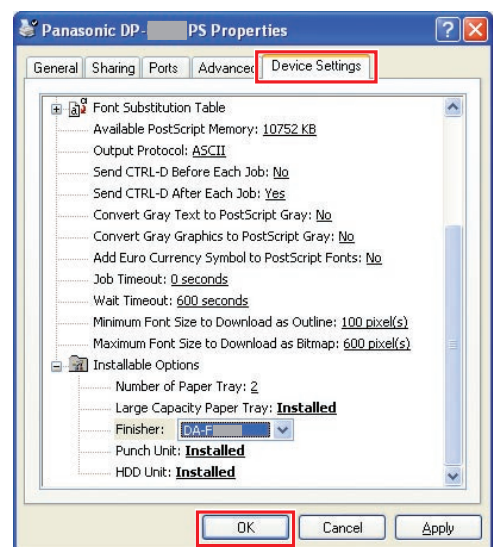
- 2 Right-click the printer icon that you want to configure.



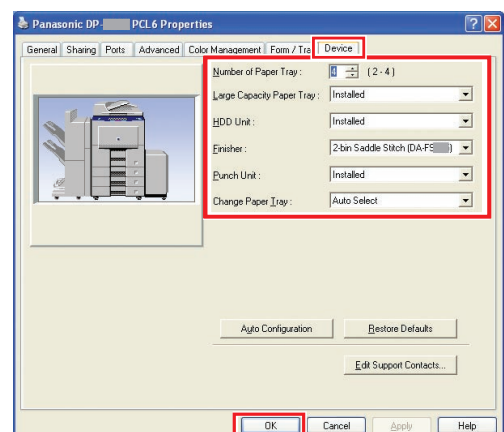
- 3 Click **"Properties"**.



- 4 Click on the **"Device Settings"**, **"Device Option"** or **"Device"** tab, and configure the optional devices, and then click **"OK"**.



- When you select the PostScript3 printer.



- When you select the PCL 6 Emulation printer.

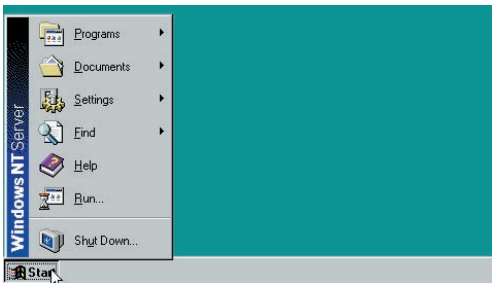
## Setting Up the Shared Setting for Server PC

Add the Printer Driver if your client OS is different from the Network Print Server. Using the **PrnCopy.exe** before installing the Printer Driver. On the Panasonic Printing System CD-ROM, there is a tool to create the Printer Driver for various Windows OS. Open the CD-ROM with the Explorer, Go “**Tools**” → “**PrnCopy**” folder.

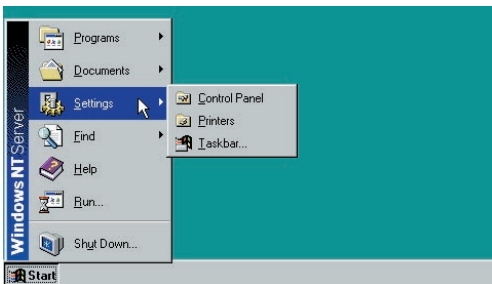
In the “**PrnCopy**” folder, double click the **PrnCopy.exe** file, a folder will be created on your Desktop. Please select an appropriate printer driver in the folder when you add the Printer Driver for a client OS. Although it explains for the PS driver, it is possible to advance it for the PCL6 Emulation driver according to the same procedure.

## Setting Up the Shared Setting for Windows NT Server.

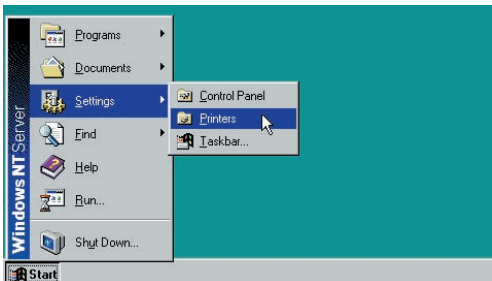
1 Click “**Start**”.



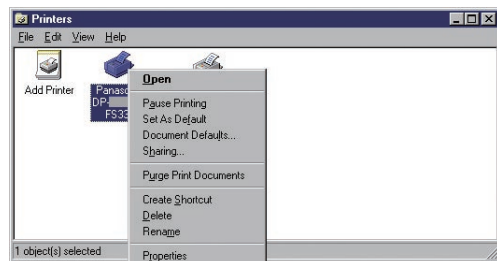
2 Select “**Settings**”.



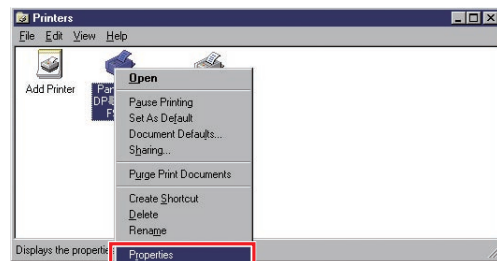
3 Click “**Printers**”.



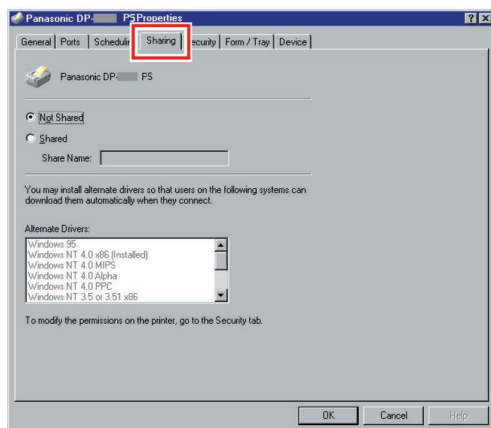
4 Right-Click the printer that you want to share.



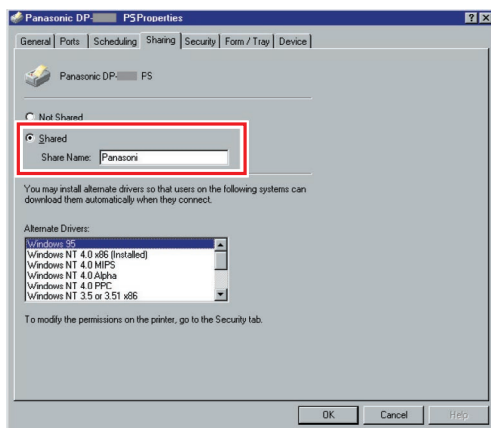
5 Click “**Properties**”.



## 6 Click on the “Sharing” tab.



## 7 Check “Shared”, and then enter the Share Name. Ex: Panasoni



### NOTE

If you need to install an alternate printer driver for your client OS, select the type of OS from the alternative driver list, and click [OK]. You can manually add the Printer Driver by following the instructions on the screen. To easily create the Printer Drivers for various OS, use the **PrnCopy.exe** before the installation. (See page 33)

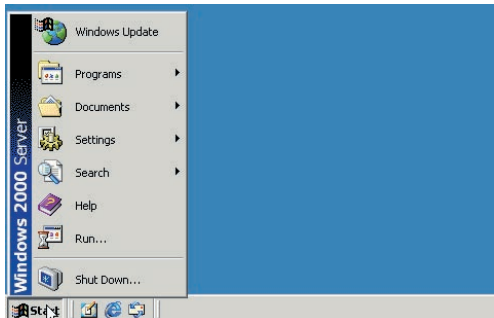
## 8 Click “OK” to close the screen.

Memo:

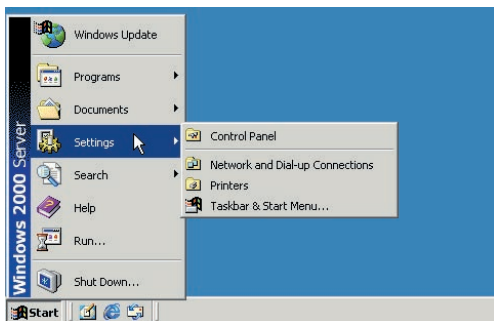


## Setting Up the Shared Setting for Windows 2000 Server.

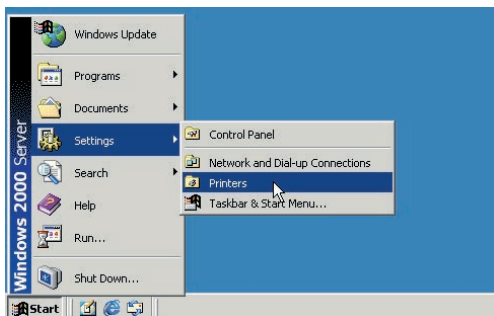
1 Click **"Start"**.



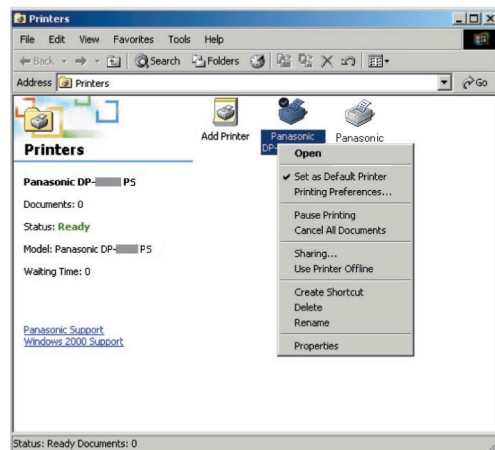
2 Select **"Settings"**.



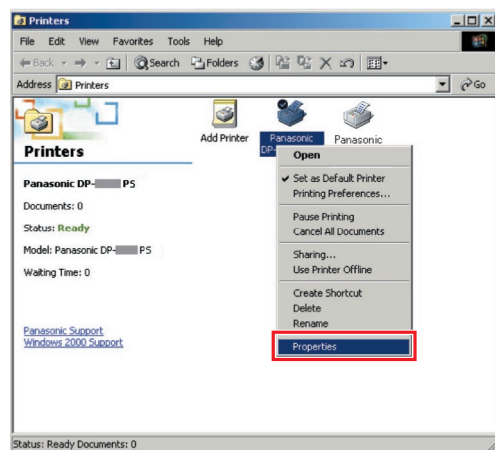
3 Click **"Printers"**.



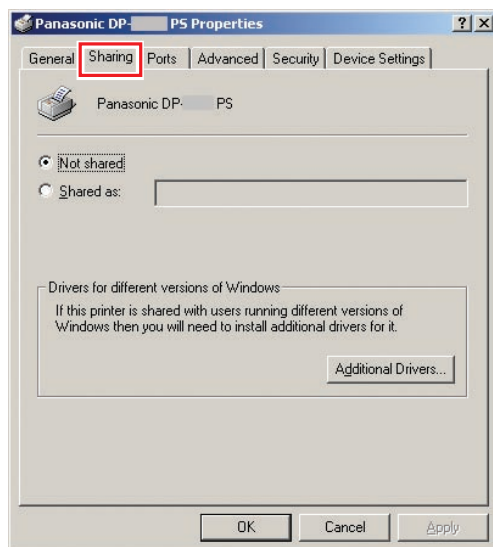
4 Right-Click the printer that you want to share.



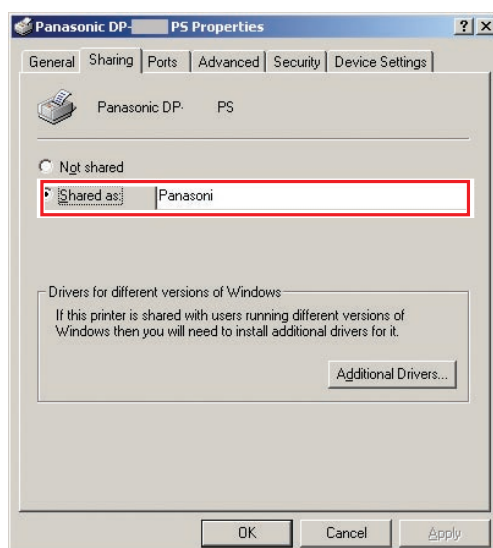
5 Click **"Properties"**.



6 Click on the “**Sharing**” tab.



7 Check “**Shared as**”, and then enter the Share Name.  
Ex: Panasoni



**NOTE**

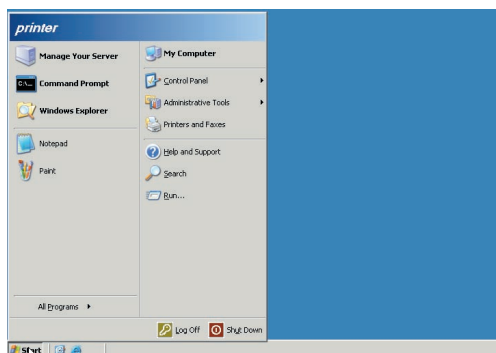
If you need to install an alternate printer driver for your client OS, click **[Additional Drivers...]**, you can manually add the Printer Driver by following the instructions on the screen. To easily create the Printer Drivers for various OS, use the **PrnCopy.exe** before the installation. (See page 33)

8 Click “**OK**” to close the screen.



## Setting Up the Shared Setting for Windows Server 2003.

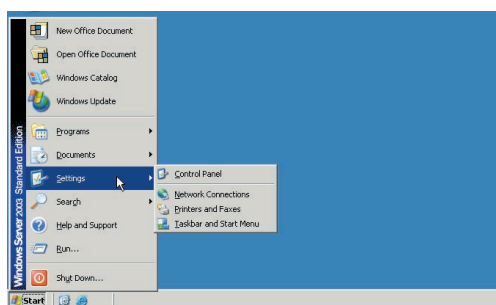
### 1 Click **"Start"**. (Category View Mode)



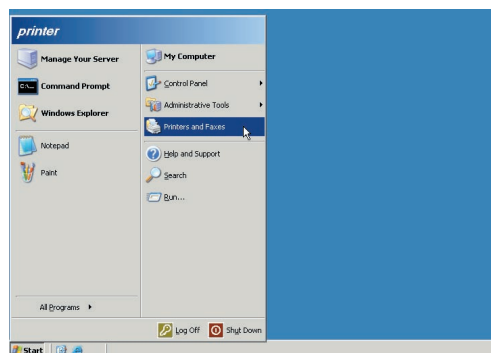
(Classic View Mode)



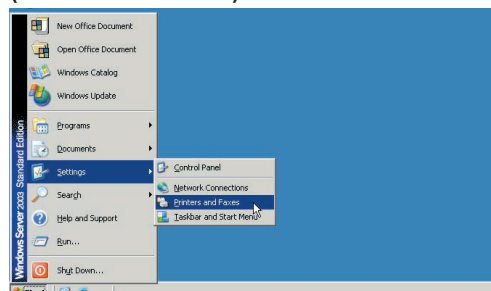
### 2 Select **"Settings"**. (Classic View Mode)



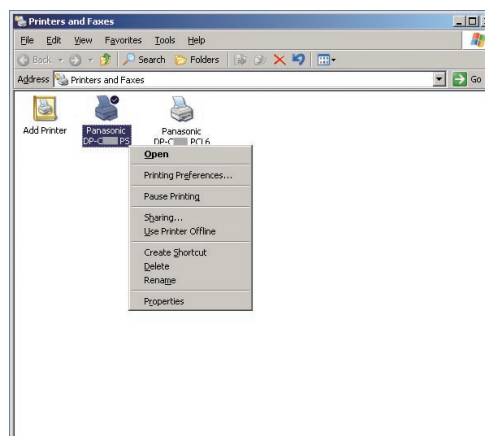
### 3 Click **"Printers and Faxes"**. (Category View Mode)



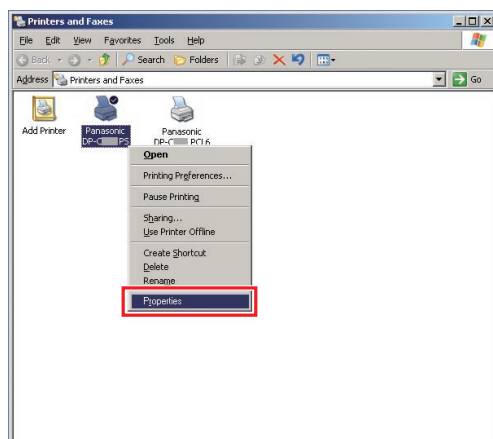
(Classic View Mode)



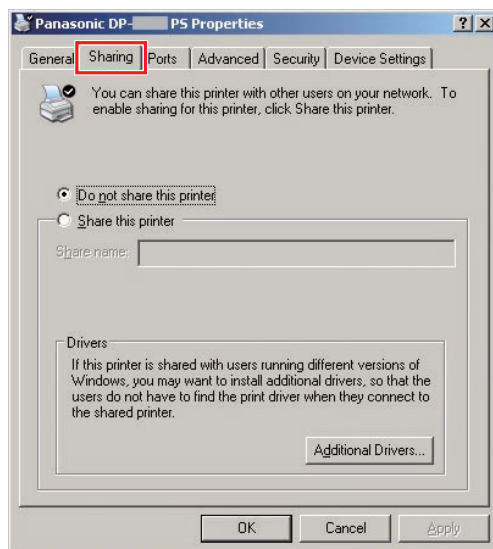
### 4 Right-Click the printer that you want to share.



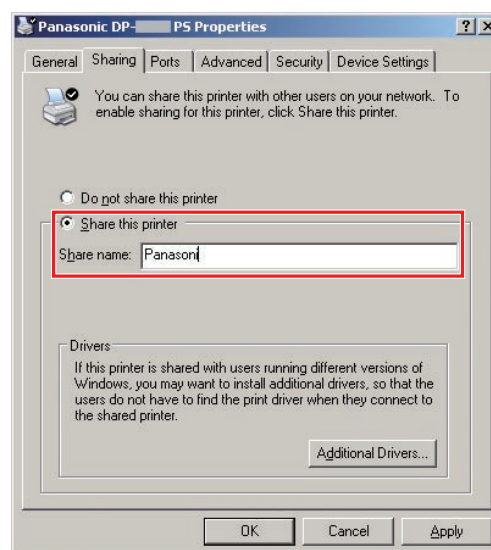
## 5 Click "Properties".



## 6 Click on the "Sharing" tab.



## 7 Check "Share this printer", and then enter the Share Name. Ex: Panasonic



### NOTE

If you need to install an alternate printer driver for your client OS, click **[Additional Drivers...]**, you can manually add the Printer Driver by following the instructions on the screen. To easily create the Printer Drivers for various OS, use the **PrnCopy.exe** before the installation. (See page 33)

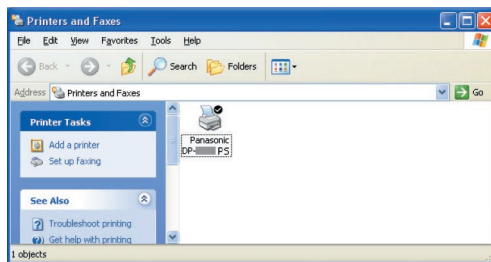
## 8 Click "OK" to close the screen.

## Setting Up the Client PC

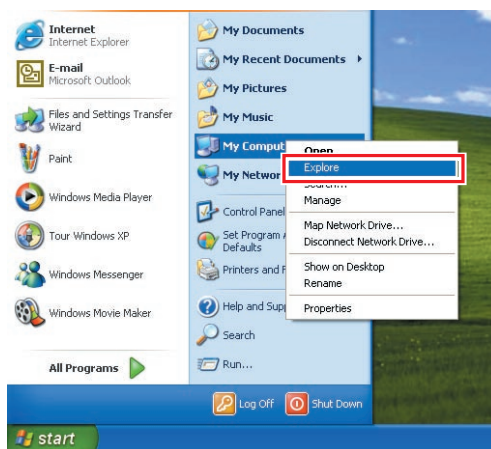
The illustrations shown for the previous steps are for Windows XP.

The procedures for other Windows Operating Systems are basically the same, even though some of the details may differ.

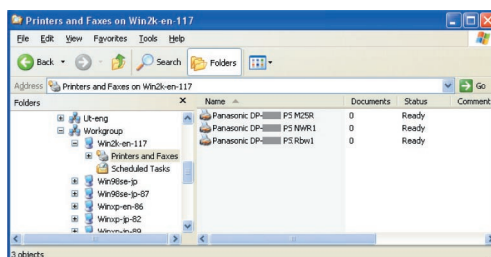
- 1 Open the Printers and Faxes window.



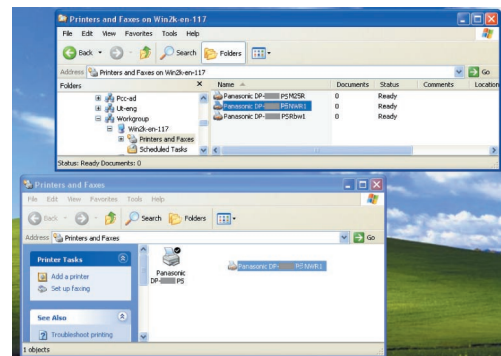
- 2 Click "Start", right-click "My Computer", and then select "Explore".



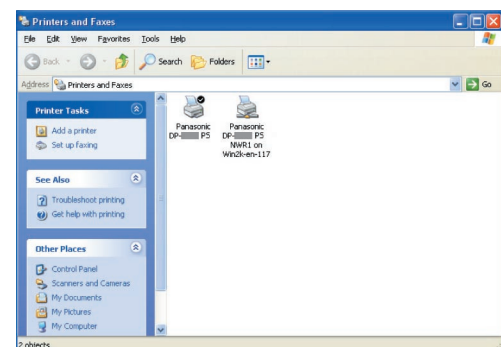
- 3 Select the Shared Printer on your Printer Server.



- 4 Drag-and-drop the printer icon onto the Printers and Faxes window.



- 5 Verify that the Printer icon is copied onto the Printers and Faxes window.



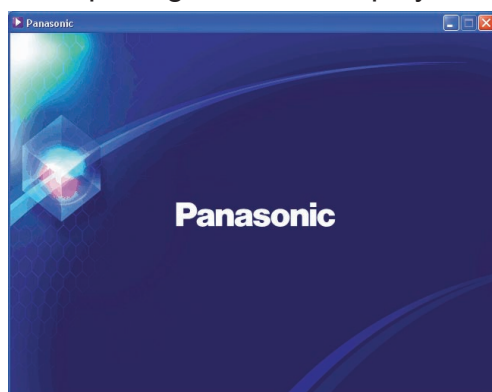
# Installing for Windows (for DP-8020E/8020P)

## Install the Drivers and Utilities for Network Printer (Complete Install)

Install the PostScript3 driver and PCL6 Emulation driver. Then install the Job Status Utility and PostScript Security Utility automatically. It is necessary to be connected the printer with the network.

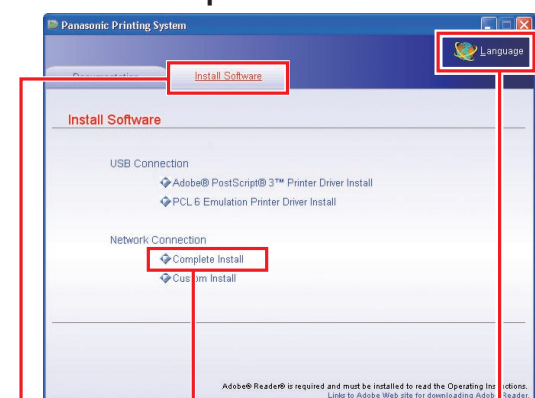
\* DP-8020P is not available for USA and Canada.

- 1 Insert the “**Panasonic Printing System**” CD-ROM.  
The opening screen is displayed.



- If the CD-ROM does not launch automatically, double click “**My Computer**” on the Desktop or on the Start menu, and then double click the CD-ROM icon.

- 2 You can select the “**Documentation**” or “**Install Software**”. Click the “**Install Software**” tab, and then select “**Complete Install**”.

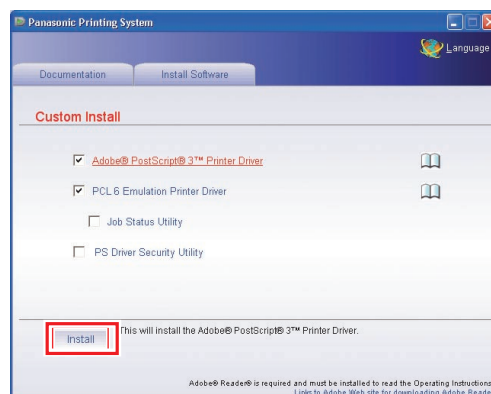


Language Selection

- Screen Language will be automatically selected using with your PC language. If you want to change the language, click “**Language**”, and then choose the desired language and click “**OK**”.

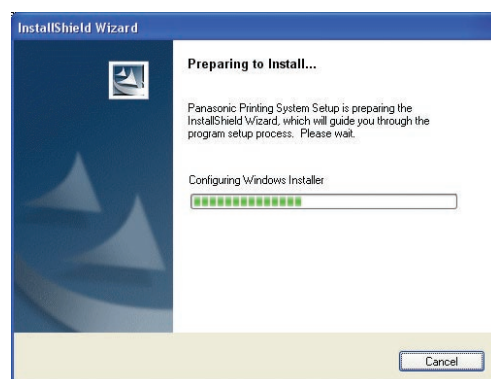


- If you choose “**Custom Install**”, you can select the desired Software. Click “**Install**”, and selected software will be installed.

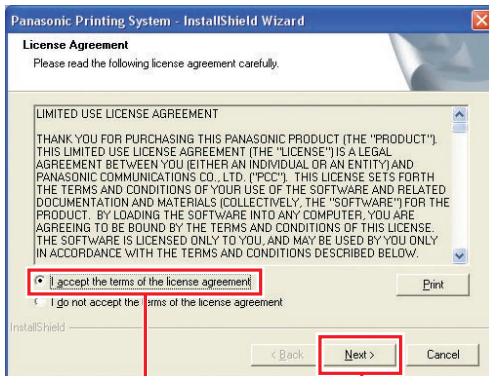


- You can install the applications you wish to install by checking the box next to the software names.  
Also, unmark the check box if you do not want to install any of the displayed software.

- 3 The InstallShield Wizard screen is displayed.

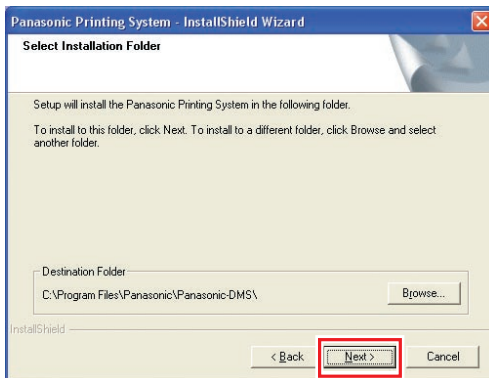


## 4 Check "I accept the terms of the license agreement", and then click "Next".



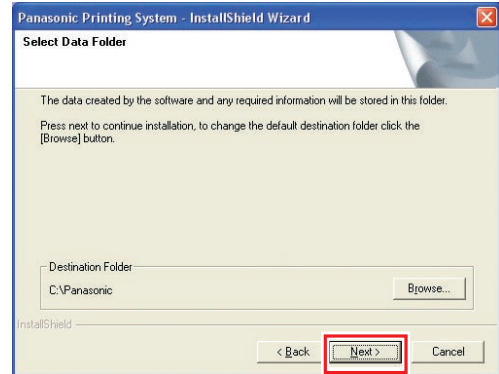
- Make sure that your printer is connected to the network properly, and the Power Switch is ON before clicking "Next".

## 5 Click "Next".



- Above Screen will not be shown when another model's **Panasonic Document Management System** has been installed.
- If you wish to change the folder, click "Browse", and then the desired folder to install.

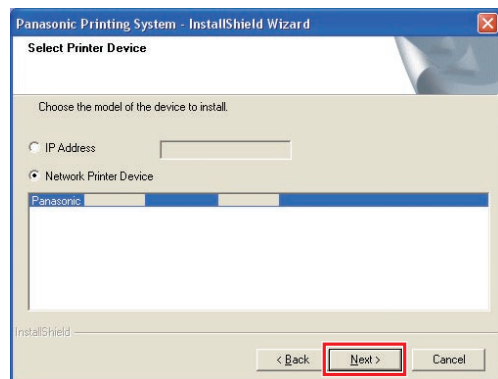
## 6 Click "Next".



- Above Screen will not be shown when another model's **Panasonic Document Management System** has been installed.
- If you wish to change the folder, click "Browse", and then the desired folder to install.

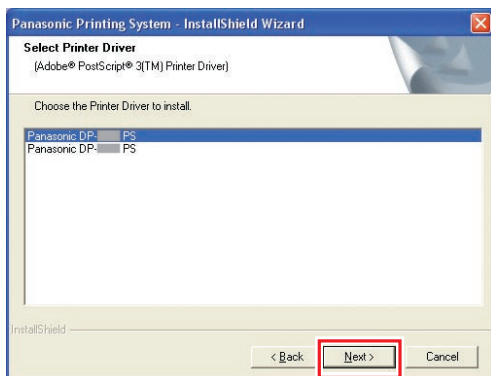
## 7 The Wizard automatically searches for printers connected with your network, and displays the found printers in the **Network Printer Device** window.

Select a printer, and then click "Next".

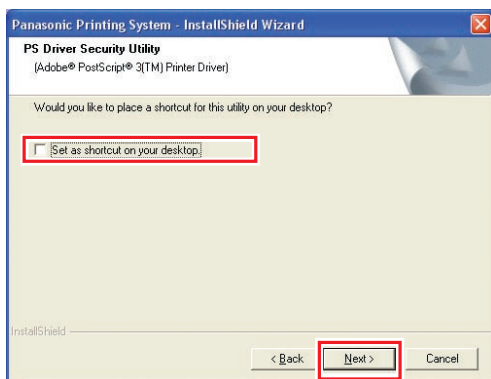


- Only the printers connected with your network can be used as a network printer.

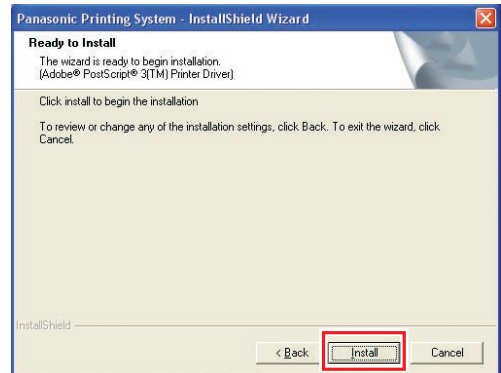
- If your printer has not been connected to the network yet, enter its allocated IP Address on the “Select Printer Device” screen of step7 of previous page. Then it will display the printers as following figure. Then select a printer and click “Next”.



- 8 If you want to place the security utility's shortcut on your desktop, check the box. Click “Next”.



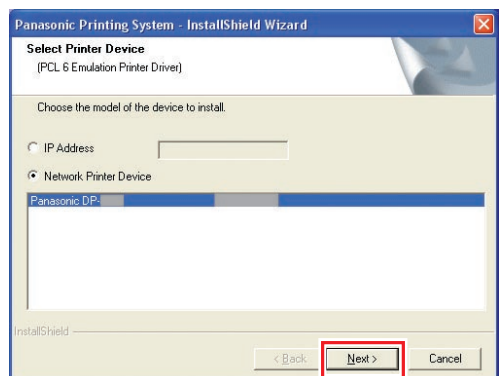
- 9 Click “Install”.



- 10 The Wizard automatically searches for printers connected with your network, and displays the found printers in the **Network Printer Device** window.

Select a printer, and then click “Next”.

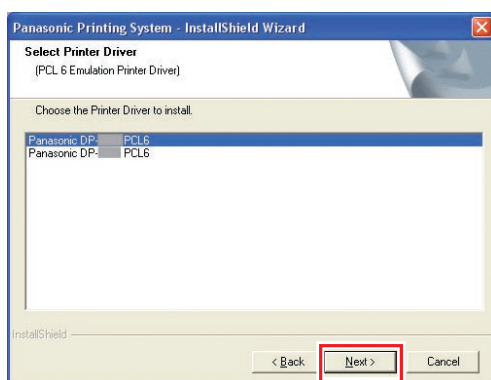
- Installation of “PCL6 Emulation Printer Driver” begins from here.



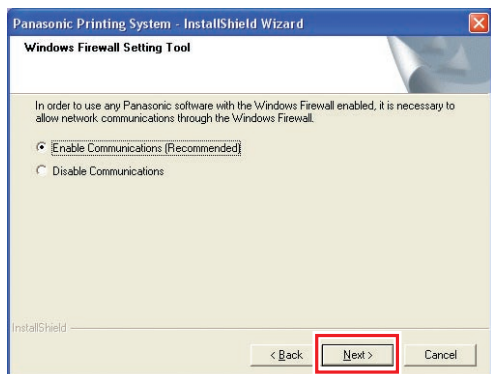
- Only the printers connected with your network can be used as a network printer.



- If your printer has not been connected with the network yet, enter its allocated IP Address on the “Select Printer Device” screen of step10 of previous page. Then it will display the printer device as following figure. Select a printer, and click “Next”.

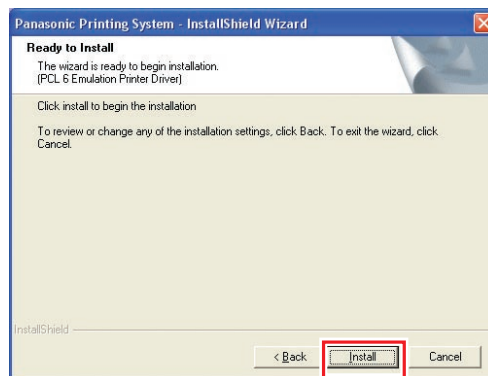


## 11 Select “Enable Communications (Recommended)”, and then click “Next”.

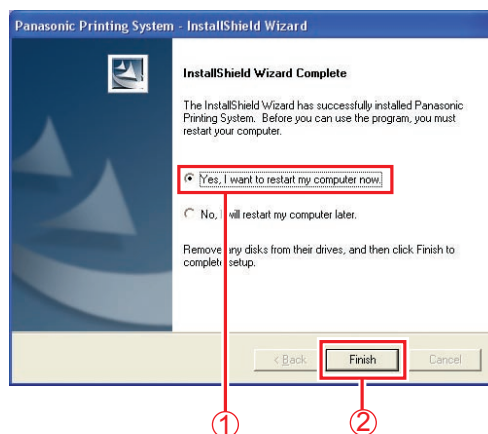


- Above screen only displays when you are installing the Job Status Utility on Windows XP (Service Pack 2 or later), or Windows 2003 Server (Service Pack 1 or later).

## 12 Click “Install”.



## 13 Check “Yes, I want to restart my computer now.”, and then click “Finish”.



- If you cannot shut down the computer immediately, choose “No, I will restart my computer later.”. However, the new setting is only applied after rebooting your computer.

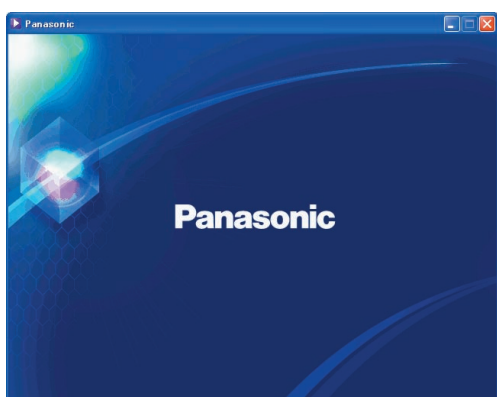


## Installing the Driver for USB Port Connection

### ATTENTION

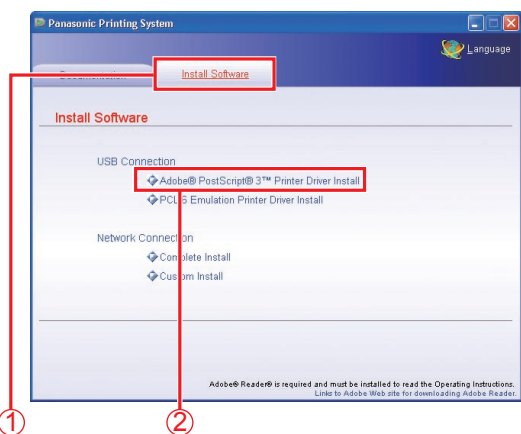
Do not connect the USB cable until you reach the step 8 (A, B, C)

- 1 Insert the **“Panasonic Printing System”** CD-ROM.  
The Panasonic opening screen is displayed.



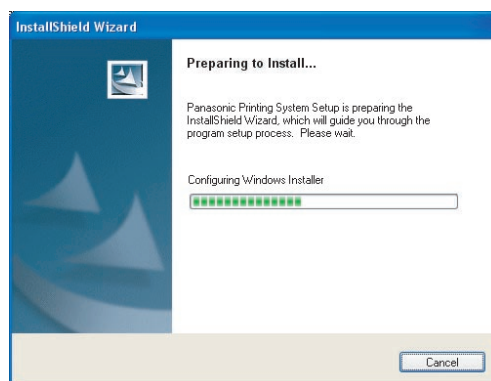
- If the CD-ROM does not launch automatically, double-click **“My Computer”** on the Desktop or on the Start menu, and then double-click the CD-ROM icon.

- 2 Click the **“Install Software”** tab, and then select the **“Adobe PostScript3 Printer Driver Install”** or **“PCL6 Emulation Printer Driver Install”**.

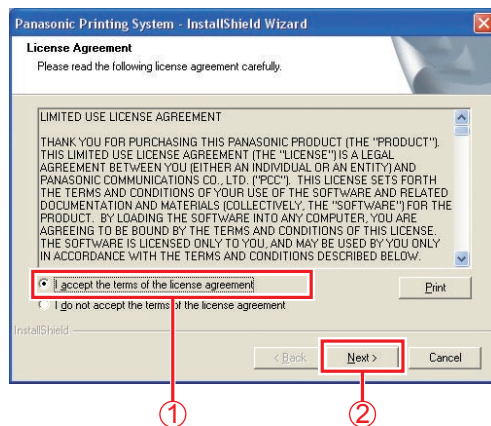


- USB connection **“Printer Driver Install”** is not selectable with Windows NT 4.0

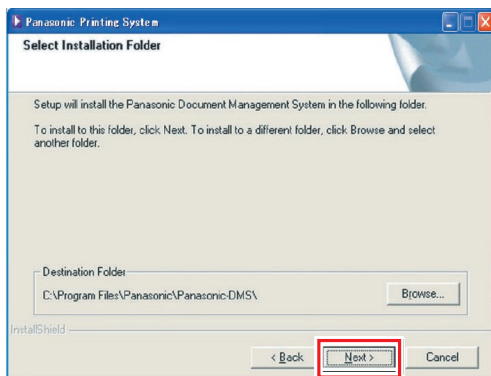
- 3 The Install Shield Wizard screen is displayed.



- 4 Check **“I accept the terms of the license agreement”**, and then click **“Next”**.

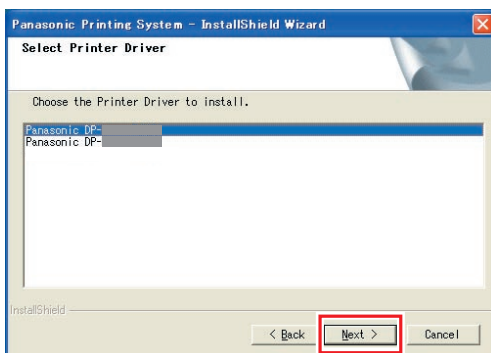


## 5 Click "Next".

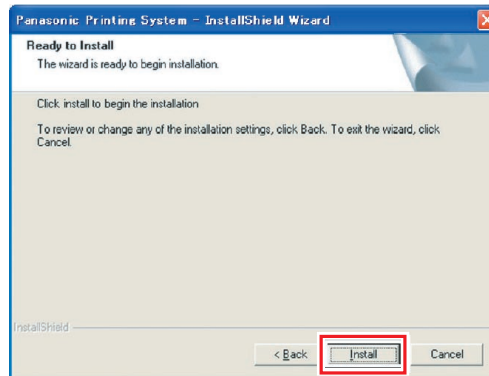


- The above Screen will not be shown if there is other model's **Panasonic Document Management System** installed.
- If you wish to change the folder, click "**Browse**", and then the desired folder to install.

## 6 Select the Printer Driver that you want to install, and then click "Next".



## 7 Click "Install".



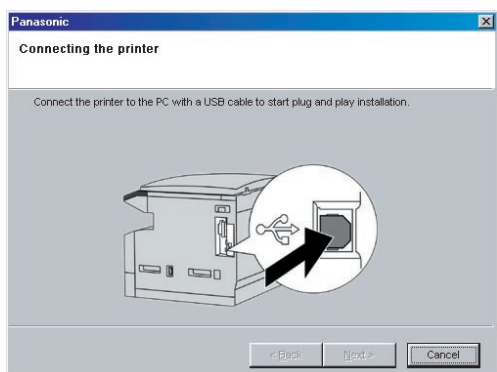
**Windows 98 / Windows Me**  
go to steps 8A and 9

**Windows 2000**  
go to steps 8B and 9

**Windows XP / Windows Server 2003**  
go to steps 8C and 9

## 8A <Windows 98 / Windows Me>

Connect the USB cable to your machine.

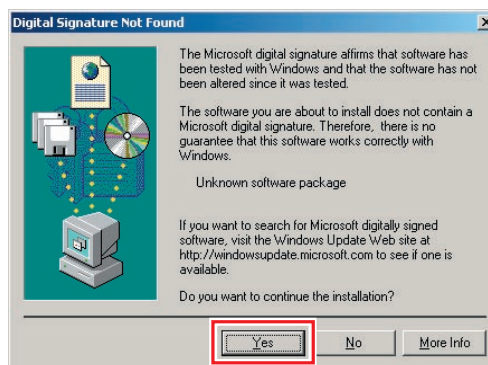


- Above screen will disappear automatically, if a printer is added.

## 8B <Windows 2000>

Click "Yes".

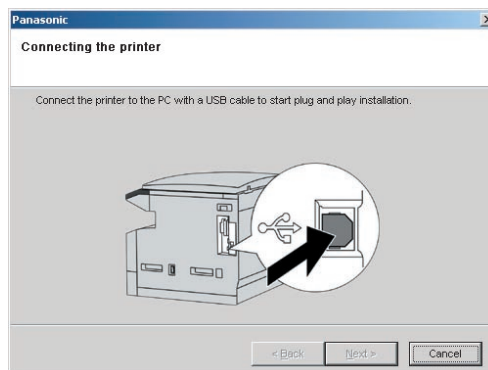
-1



## 8B

Connect the USB cable to your machine.

-2

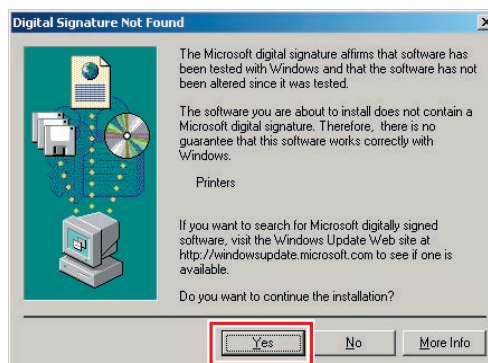


- Above screen will disappear automatically, if a printer is added.

## 8B

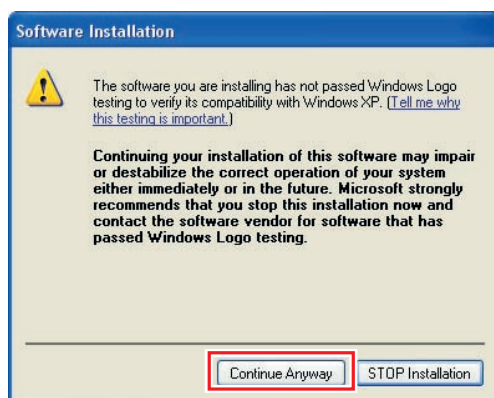
Click "Yes".

-3



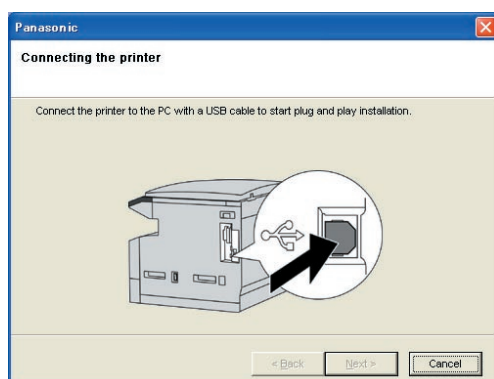
**8C** <Windows XP / Windows Server 2003>  
Click "Continue Anyway".

-1



**8C** Connect the USB cable to your machine.

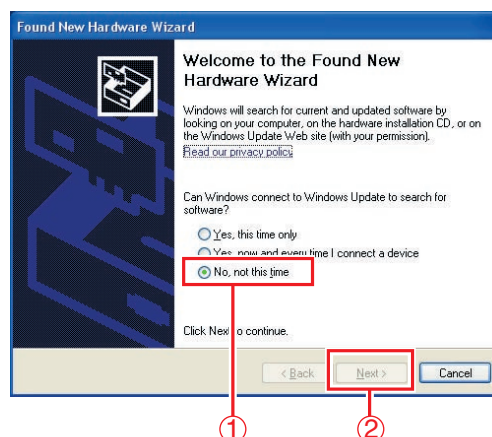
-2



- Above screen will disappear automatically, if a printer is added.

**8C** Select "No, not this time", and then click "Next".

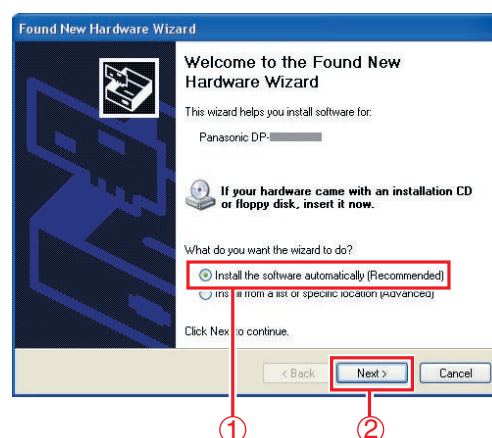
-3



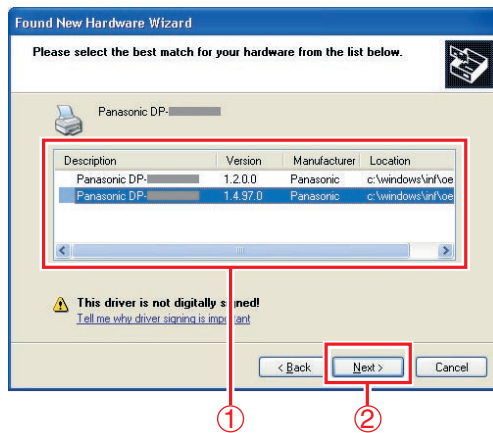
- Above screen will be displayed when you have installed the Windows XP Service Pack 2.

**8C** Select "Install the software automatically (Recommended)", and then click "Next".

-4

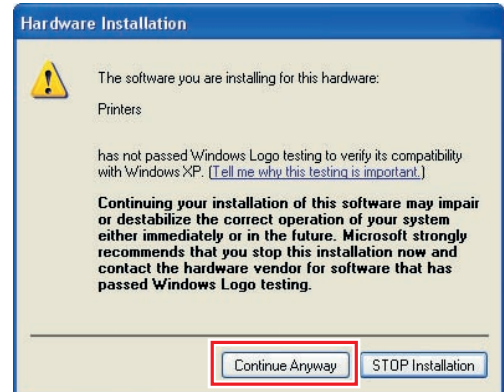


- 8C-5** If you have a previous version of the Printer Driver installed, select the latest version of the “.inf” file, and then click **“Next”**.

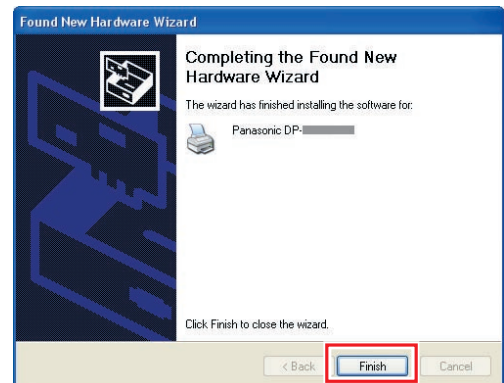


- Above screen will not be displayed when installing the Printer Driver for the first time.

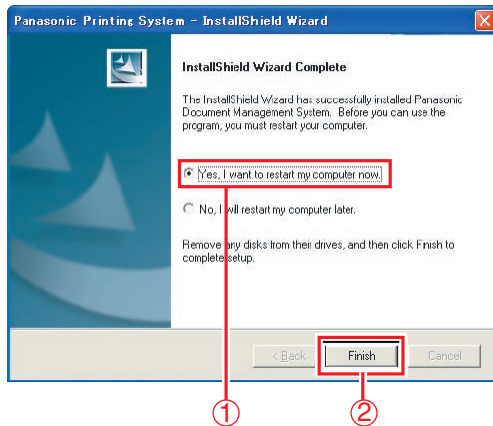
- 8C-6** Click **“Continue Anyway”**.



- 8C-7** Click **“Finish”**.



- 9 Check **“Yes, I want to restart my computer now.”**, and then click **“Finish”**.



- If you cannot shut down the computer immediately, choose **“No, I will restart my computer later.”**. However, the new setting is only applied after rebooting your computer.

Memo:



## Device Settings

Setting up the Paper Feeder, Hard Disk Drive, Finisher, and etc..

- 1 Open the Printer Dialog Box using the following procedures.

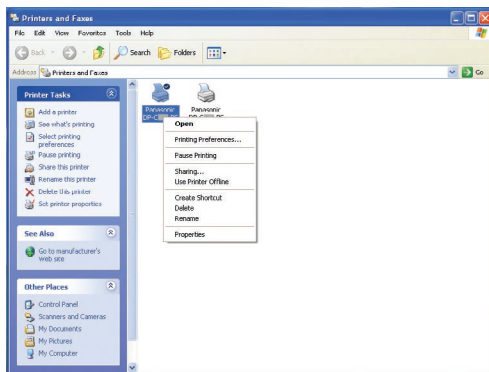
Windows XP/Server 2003:

Select **"Start"** → **"Settings"** → **"Printers and Faxes"**

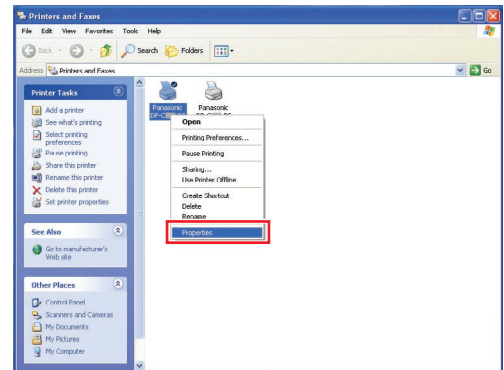
Other Windows OS:

Select **"Start"** → **"Settings"** → **"Printers"**

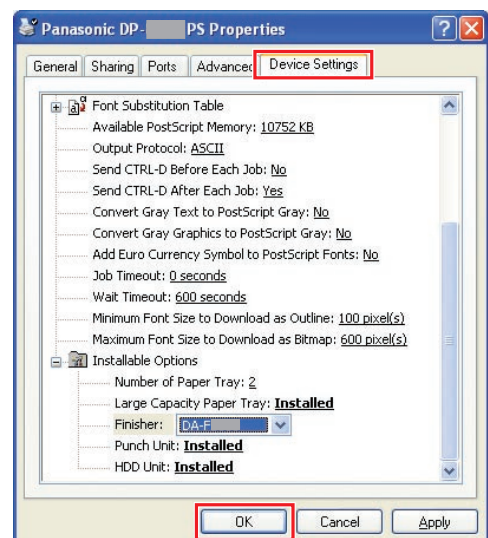
- 2 Right-click the printer that you want to configure.



- 3 Click **"Properties"**.

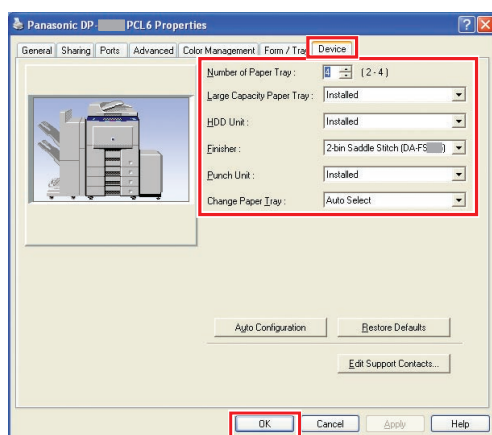


- 4 Select **"Device Settings"**, **"Device Options"** or **"Device"** tab, and configure the optional devices, and then click **"OK"**.



- When you select the PostScript3 printer.





- When you select the PCL 6 Emulation printer.

**Memo:**

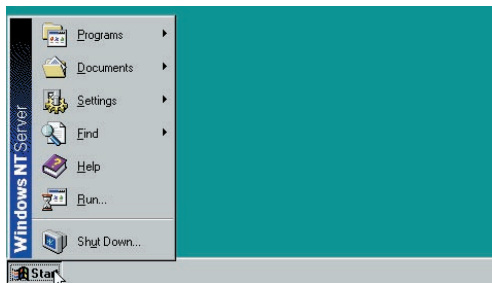
## Setting Up the Shared Setting for Server PC

Add the Printer Driver if your client OS is different from the Network Print Server. Using the **PrnCopy.exe** before installing the Printer Driver. On the Panasonic Printing System CD-ROM, there is a tool to create the Printer Driver for various Windows OS. Open the CD-ROM with the Explorer, Go “**Tools**” → “**PrnCopy**” folder.

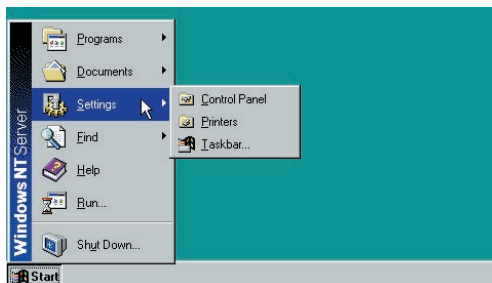
In the “**PrnCopy**” folder, double click the **PrnCopy.exe** file, a folder will be created on your Desktop. Please select an appropriate printer driver in the folder when you add the Printer Driver for a client OS. Although it explains for the PS driver, it is possible to advance it for the PCL6 Emulation driver according to the same procedure.

## Setting Up the Shared Setting for Windows NT Server.

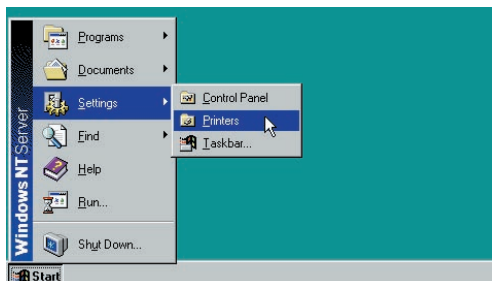
1 Click “**Start**”.



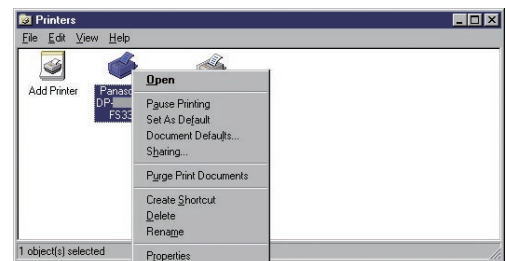
2 Select “**Settings**”.



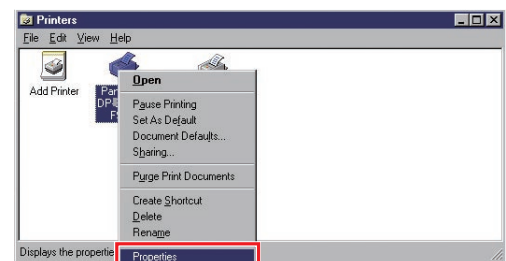
3 Click “**Printers**”.



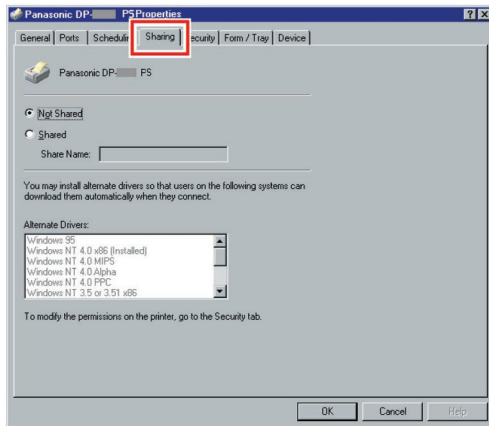
4 Right-Click the printer that you want to share.



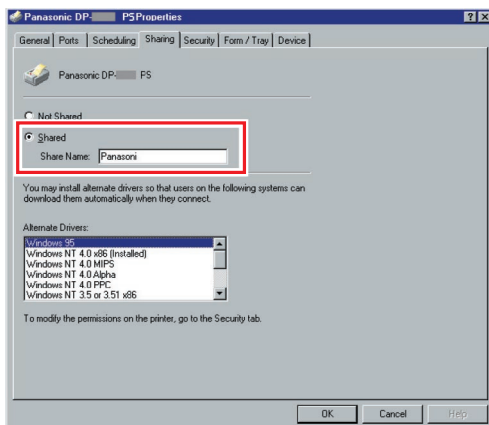
5 Click “**Properties**”.



## 6 Click on the “Sharing” tab.



## 7 Check “Shared”, and then enter the Share Name. Ex: Panasoni



### NOTE

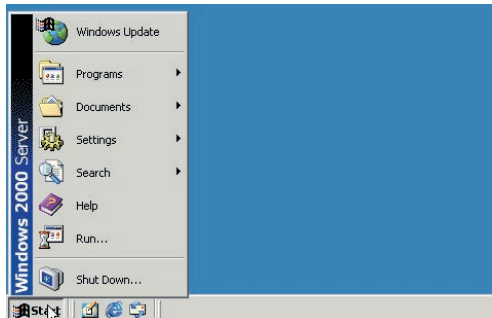
If you need to install an alternate printer driver for your client OS, select the type of OS from the alternate driver list, and click [OK]. You can manually add the Printer Driver by following the instructions on the screen. To easily create the Printer Drivers for various OS, use the **PrnCopy.exe** before the installation. (See page 52)

## 8 Click “OK” to close the screen.

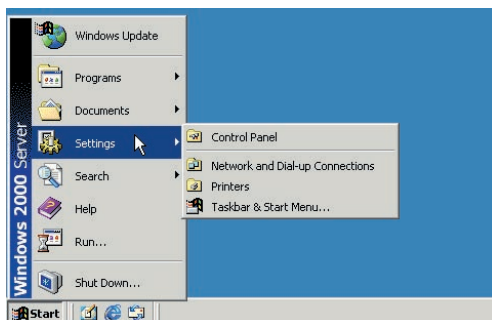
Memo:

## Setting Up the Shared Setting for Windows 2000 Server.

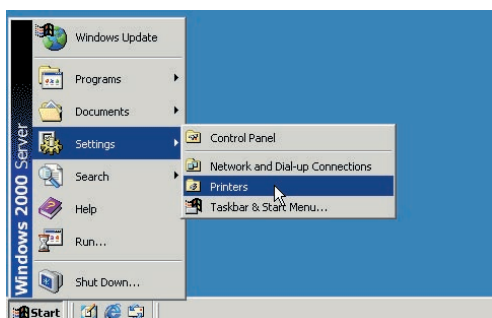
1 Click **"Start"**.



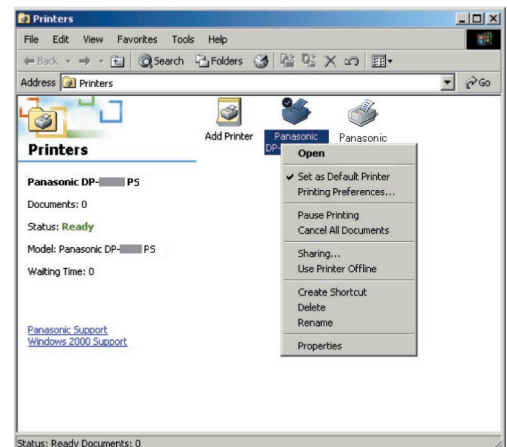
2 Select **"Settings"**.



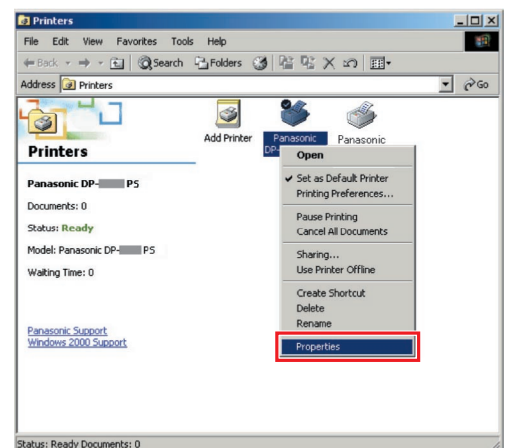
3 Click **"Printers"**.



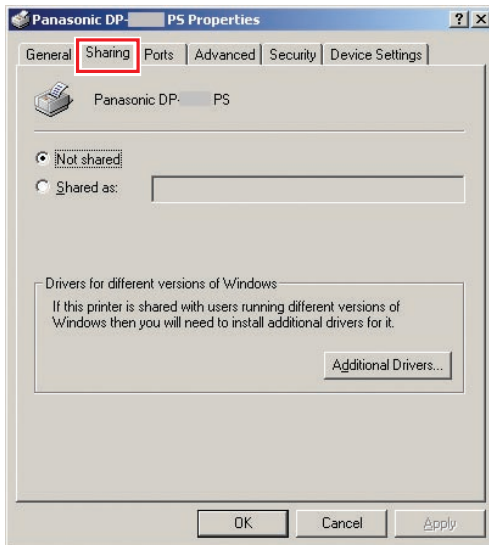
4 Right-Click the printer that you want to share.



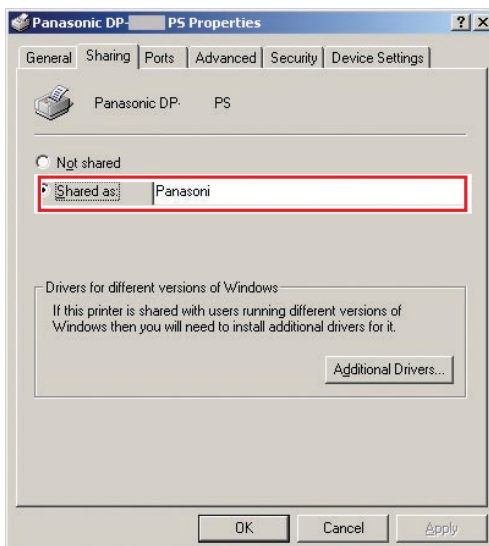
5 Click **"Properties"**.



## 6 Click on the “Sharing” tab.



## 7 Check “Shared as”, and then enter the Share Name. Ex: Panasoni



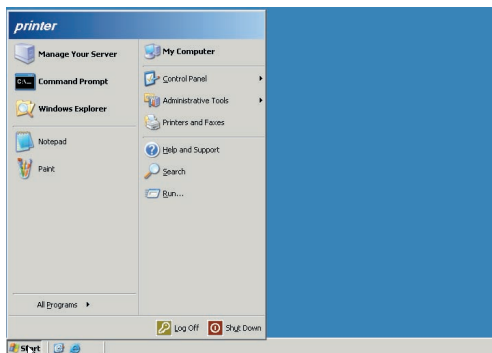
### NOTE

If you need to install an alternate printer driver for your client OS, click [**Additional Drivers...**], you can manually add the Printer Driver by following the instructions on the screen. To easily create the Printer Drivers for various OS, use the **PrnCopy.exe** before the installation. (See page 52)

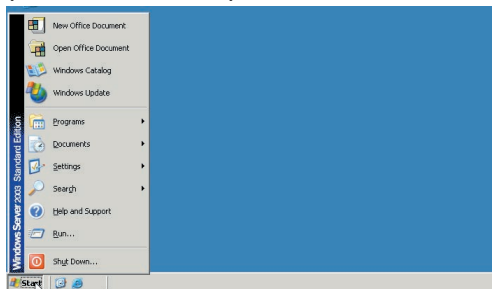
## 8 Click “OK” to close the screen.

## Setting Up the Shared Setting for Windows Server 2003.

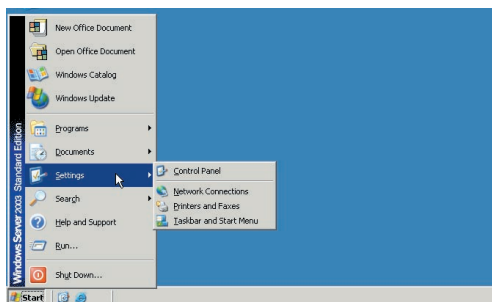
1 Click **"Start"**.  
(Category View Mode)



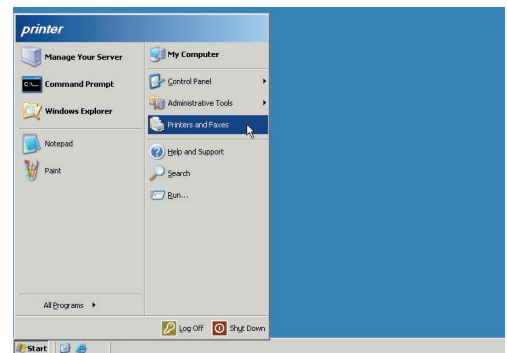
(Classic View Mode)



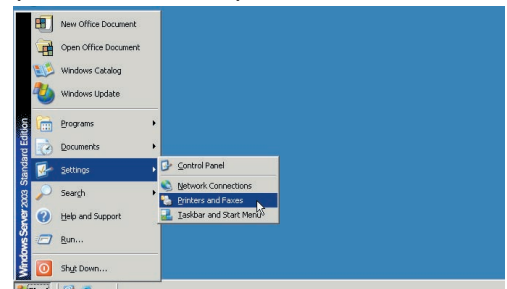
2 Select **"Settings"**.  
(Classic View Mode)



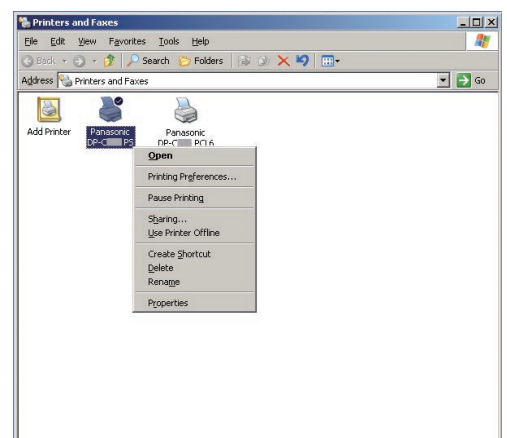
3 Click **"Printers and Faxes"**.  
(Category View Mode)



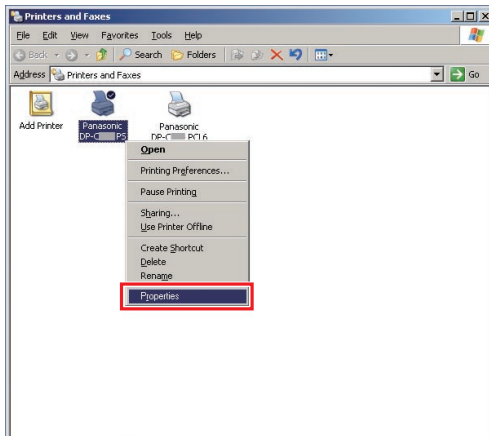
(Classic View Mode)



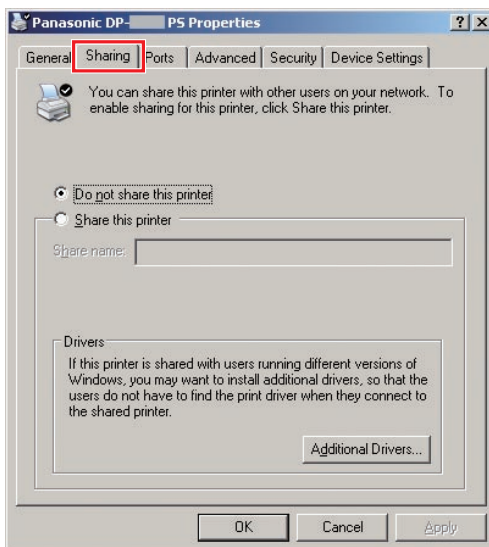
4 Right-Click the printer that you want to share.



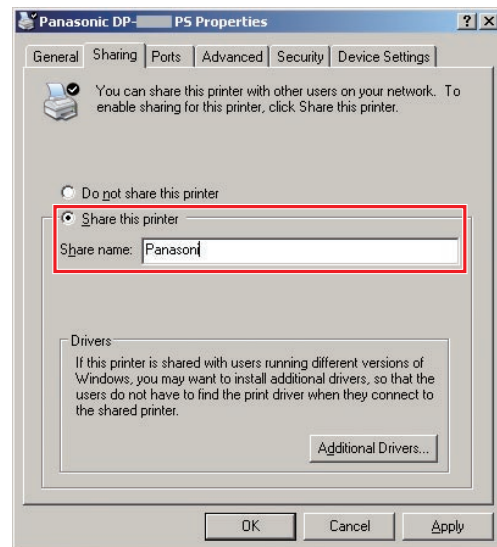
## 5 Click “Properties”.



## 6 Click on the “Sharing” tab.



## 7 Check “Share this printer”, and then enter the Share Name. Ex: Panasoni



### NOTE

If you need to install an alternate printer driver for your client OS, click **[Additional Drivers...]**, you can manually add the Printer Driver by following the instructions on the screen. To easily create the Printer Drivers for various OS, use the **PrnCopy.exe** before the installation. (See page 52)

## 8 Click “OK” to close the screen.

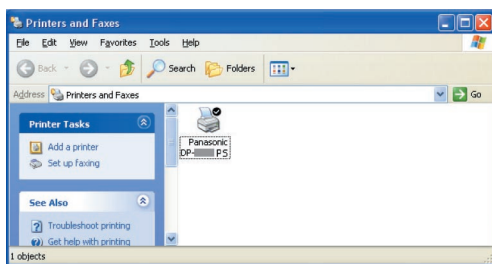


## Setting Up the Client PC

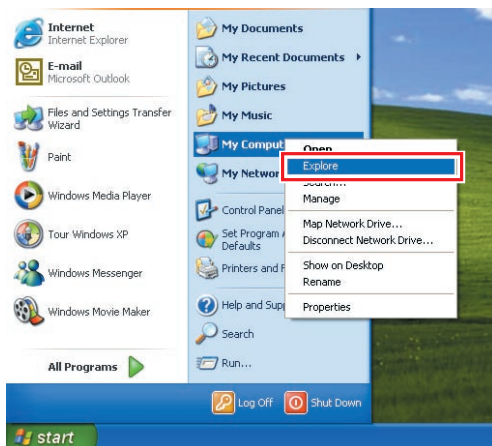
The illustrations shown for the previous steps are for Windows XP.

The procedures for other Windows Operating Systems are basically the same, even though some of the details may differ.

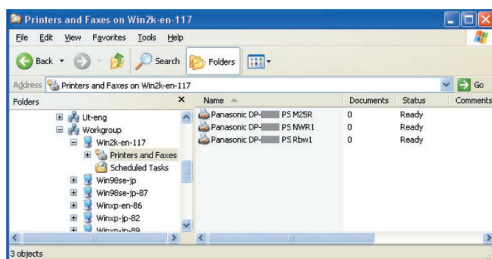
- 1 Open the Printers and Faxes window.



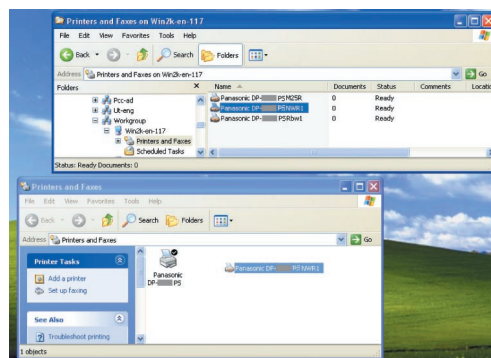
- 2 Click **“Start”**, right-click **“My Computer”**, and then select **“Explore”**.



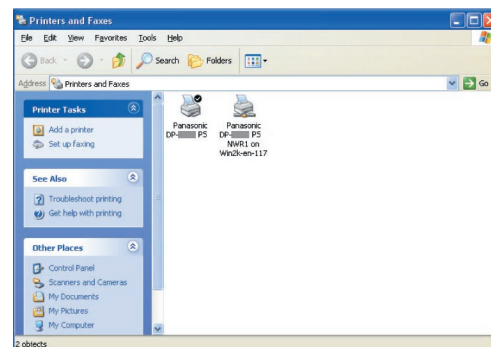
- 3 Select the Shared Printer on your Printer Server.



- 4 Drag-and-drop the printer icon onto the Printers and Faxes window.



- 5 Verify that the Printer icon is copied onto the Printers and Faxes window.



## Memo

# Installing for Macintosh

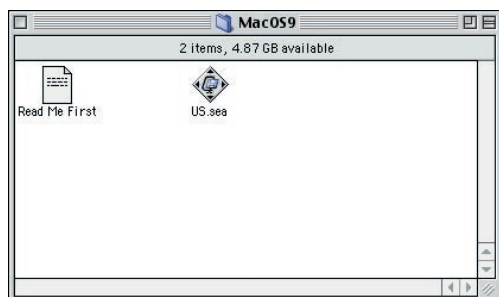
## Installing for Mac OS 8.6/9.x

### Installing the PS Printer Driver

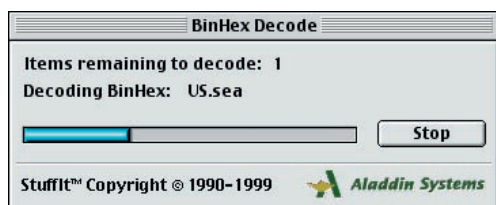
#### NOTE

Though each model is common to the installation in Macintosh.  
The procedure is different according to the version of Mac OS.

- 1 Insert the **Panasonic Printing System CD**.
- 2 Double-click the CD icon on the desktop. Open **Macintosh > English > AdobePostScriptDriver > MacOS9** folder.



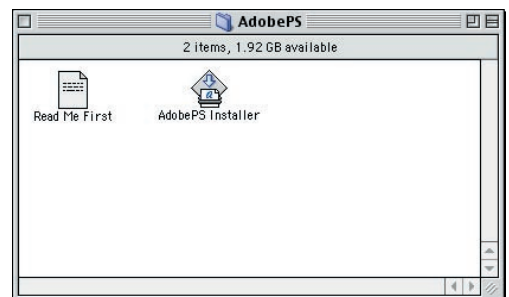
- 3 Copy **US.sea.hqx** into your desktop. Then double-click the **US.sea.hqx** icon to decompress it.



#### NOTE

The extension of **“.hqx”**, **“sit”**, or **“.sea”** file can decompress by Stuffit Expander by Aladdin Systems. Stuffit Expander is equipped normally in Mac OS 8.6/9.x.

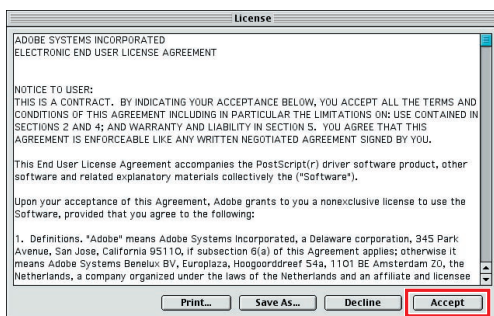
- 4 Open **US > AdobePS** folder, and double-click the **AdobePS Installer** icon to start the setup.



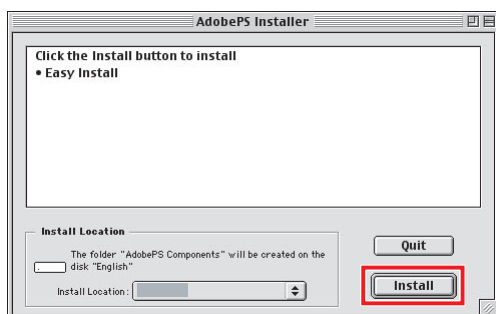
- 5 The setup screen will be displayed. Click **“Continue...”**.



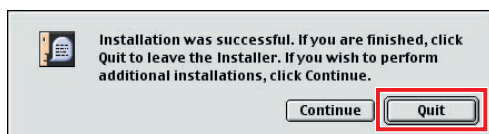
## 6 Click “Accept”.



## 7 Click “Install”.



## 8 Click “Quit”.



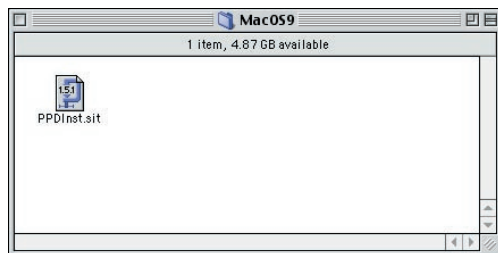
The install process is completed.

Memo:

## Installing the PPD file

After completing the installation of the AdobePS Printer Driver, install the PostScript printer description (PPD) file into the System Folder as follows:

- 1 Double-click the CD icon.  
Open **Macintosh > English > Driver > MacOS9** folder.



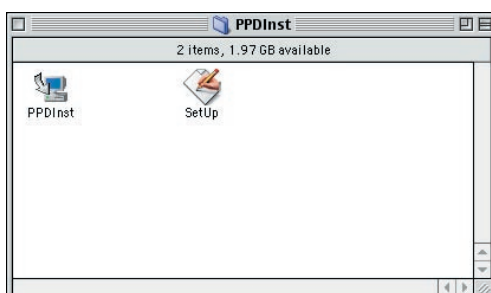
- 2 Copy **PPDInst.sit** into your desktop. Then double-click the **PPDInst.sit** icon to decompress it.



### NOTE

The extension of ".hqx", ".sit", or ".sea" file can decompress by Stuffit Expander by Aladdin Systems. Stuffit Expander is equipped normally in Mac OS 8.6/9.x.

- 3 Open the **PPDInst** folder on desktop, then double-click the **Setup** icon to start the setup.

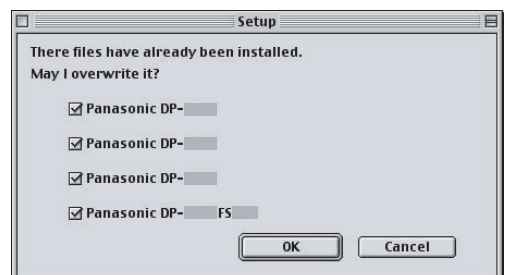


### NOTE

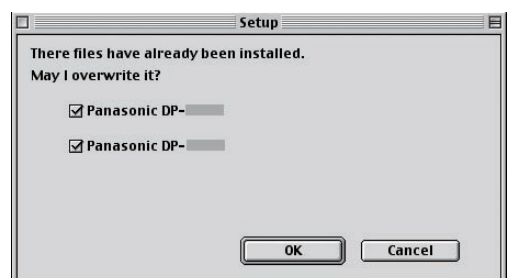
Select the desired printer and click "OK" when the PPD file has already been installed and overwriting installation is performed.  
A screen changes with models.



- In the case of DP-C354/C264/C323/C263/C213



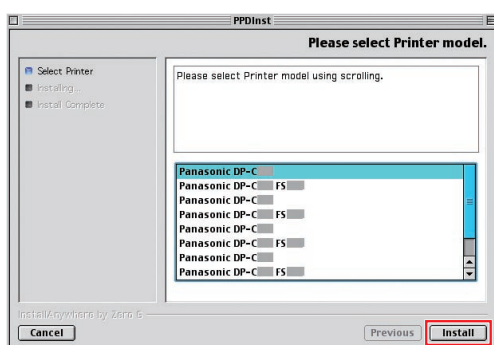
- In the case of DP-8060/8045/8035



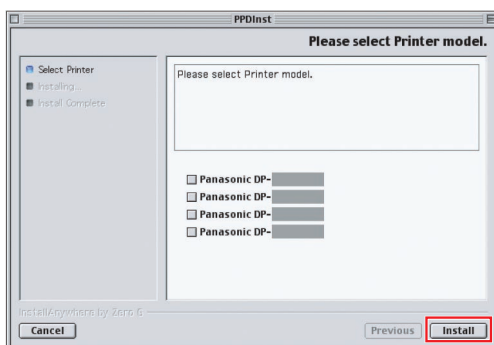
- In the case of DP-8020E/8020P

## 4 Select a printer, and then click “Install”.

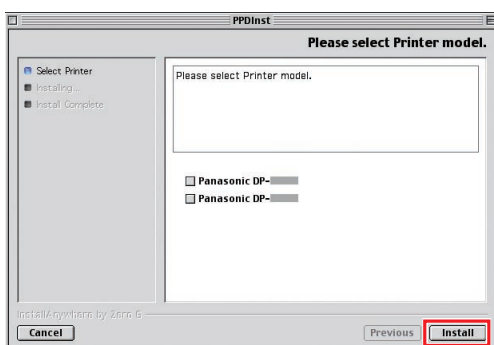
A screen changes with models.



- In the case of DP-C354/C264/C323/C263/C213
- Panasonic DP-Cxxx :  
Machine without a Finisher option or with the 1-bin Saddle-Stitch Finisher (DA-FS356) or Outer Tray (DA-XT320).
- Panasonic DP-Cxxx + FS350 :  
Machine with the 1-bin Stapler Finisher (DA-FS350) or Outer Tray (DA-XT320).

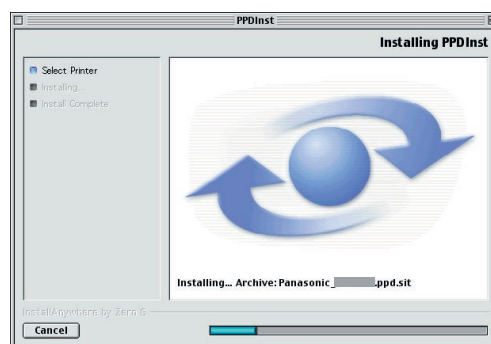


- In the case of DP-8060/8045/8035
- Panasonic DP-8035 + FS330 :  
Machine with the 2-bin Stapler Finisher (DA-FS330)

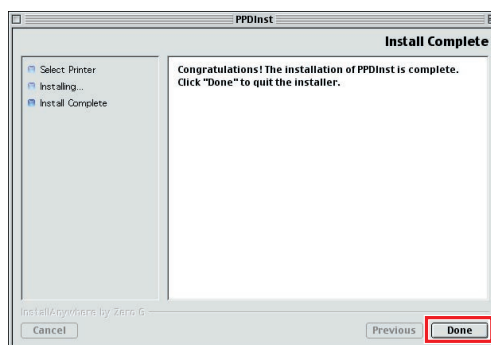


- In the case of DP-8020E/8020P

## 5 A progress bar indicates that the PPD file is being installed.



## 6 Click “Done”.



This install process is completed.

## Creating Desktop Printer

Use the Desktop Printer Utility to assign the installed AdobePS Printer Driver and PPD file to the connected printer, and create a Desktop Printer.

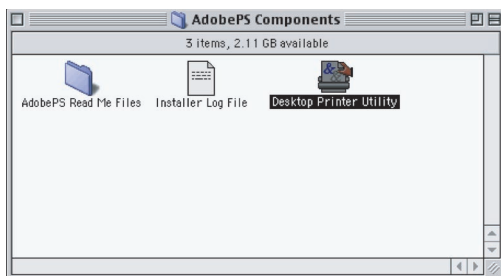
### NOTE

The following describes how to perform this procedure using the Desktop Printer Utility. However, you can also assign the printer using Chooser from the Apple Menu.

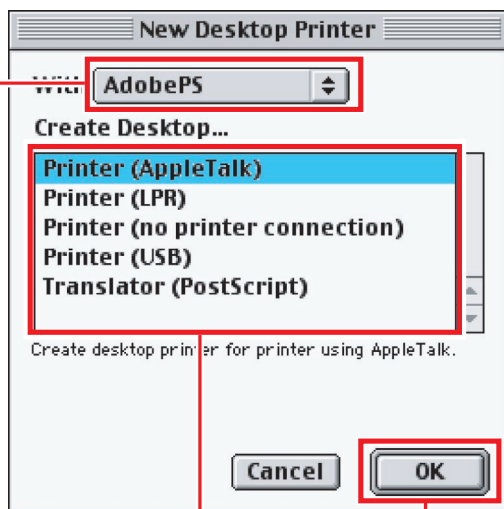
- 1 Open **AdobePS Components** folder in your Hard Disk Drive. Then double-click the **Desktop Printer Utility** icon to start the utility.

### NOTE

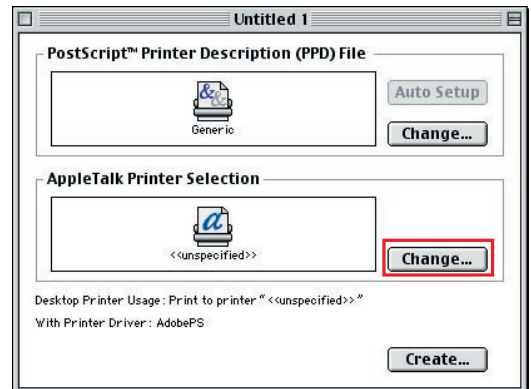
If the **Desktop Printer Utility** is not on the **Adobe PS Components**, follow the “Installing the PS Printer Driver” (See page 60).



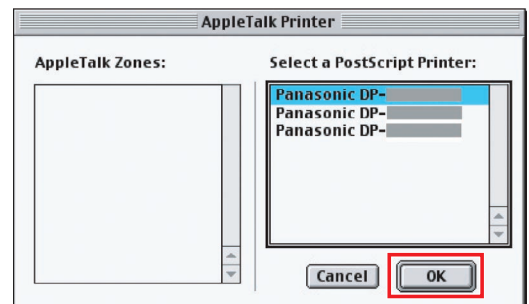
- 2 Select **AdobePS** from **With** menu and select the printer connection method on the **Create Desktop...** menu. Click “OK”.



- 3 Click the “**Change...**” button on the **AppleTalk Printer Selection**.

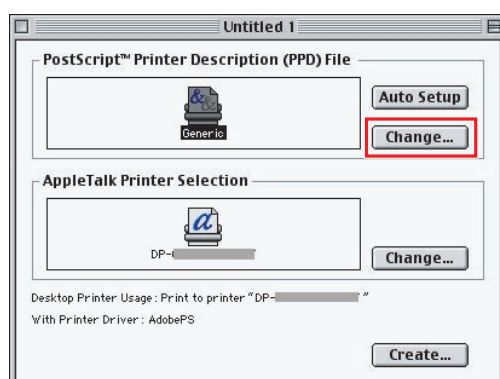


- 4 Select a printer, and click “OK”.

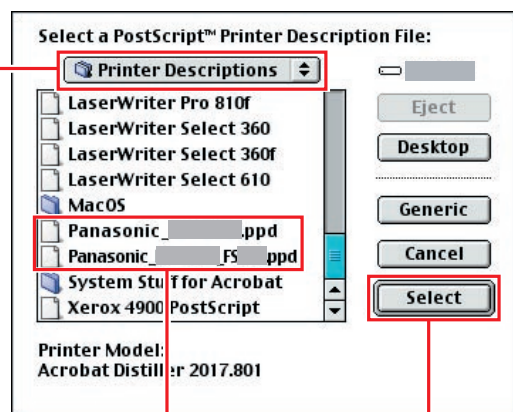




## 5 Click “Change...” on the PostScript Printer Description (PPD) File.



## 6 Select the “Printer Descriptions” from HDD > System Folder > Extensions. Select the appropriate PPD file for the PostScript Printer.



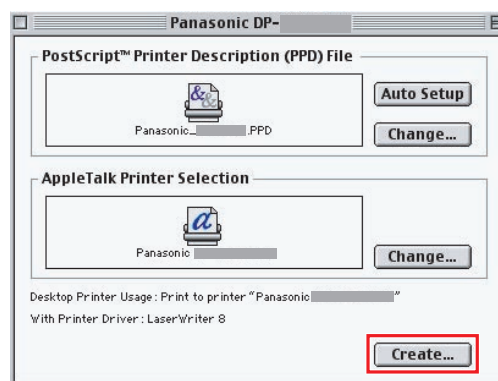
### <DP-C354/C264/C323/C263/C213>

- Panasonic DP-Cxxx :  
Machine without a Finisher option or with the 1-bin Saddle-Stitch Finisher (DA-FS356) or Outer Tray (DA-XT320).
- Panasonic DP-Cxxx + FS350 :  
Machine with the 1-bin Stapler Finisher (DA-FS350) or Outer Tray (DA-XT320).

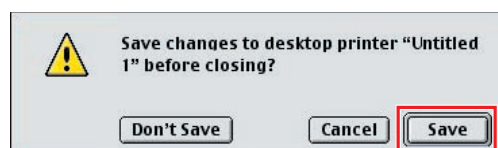
### <DP-8060/8045/8035>

- Panasonic DP-8035 + FS330 :  
Machine with the 2-bin Stapler Finisher (DA-FS330)

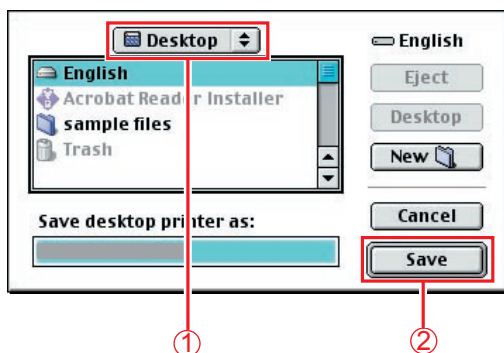
## 7 Click “Create...”.



## 8 Click “Save”.



9 Select a “Desktop” and click “Save”.



- When you want to change destination folder, select it.

10 A status bar indicates that the desktop printer is being created.



11 The utility creates a new desktop printer icon for your device.



Memo:

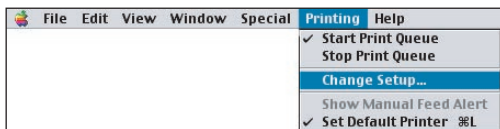
## Device Settings

In the Device Setting Dialog box, it can be set the optional device settings in detail.

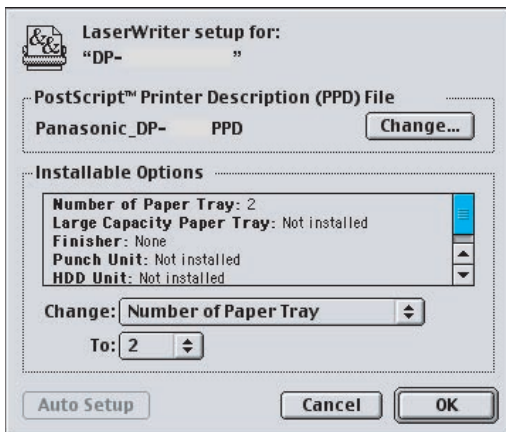
- 1 Select the desired printer icon.



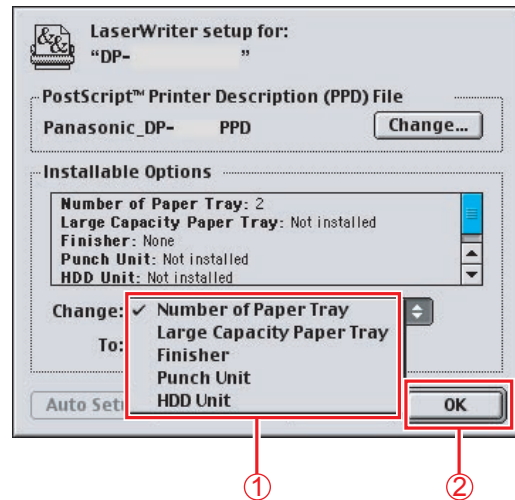
- 2 Select a "Printing" from toolbar, and click the "Change Setup...".



Open the Setup dialog.



- 3 Click the up/down spin control of "Change...", and set the install option.



- 4 Select the install option, and click "OK".

## Installing for Mac OS X

A PostScript printer driver is already provided in Mac OS X. You need to install the PostScript printer description (PPD) file, and add the printer into your system for printing.

### NOTE

In order to utilize the mailbox function of the Panasonic printer, change the settings using the PS Driver Security Utility after installing the PPD file. And then, add the Panasonic printer to the printer list. For more details, refer to “**Installing the PS Driver Security Utility for Macintosh**” (See page 89).

## Installing the PS Printer Description (PPD) File

**1** Insert the **Panasonic Printing System CD**.

**2** Double-click the CD icon on the desktop.

**For Mac OS X 10.1**

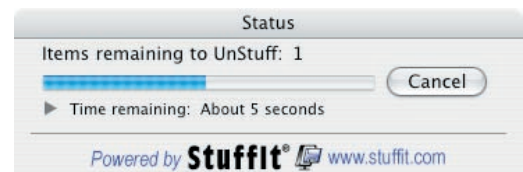
Open **Macintosh > English > Driver > MacOSX101** folder.

**For Mac OS X 10.2 later**

Open **Macintosh > English > Driver > MacOSX102-later** folder.



**3** Copy **PPDInst.dmg.zip (PPDInst.dmg.sit for Mac OS X 10.1)** into your desktop. Then double-click the **PPDInst.dmg.zip (PPDInst.dmg.sit for Mac OS X 10.1)** icon to decompress it.



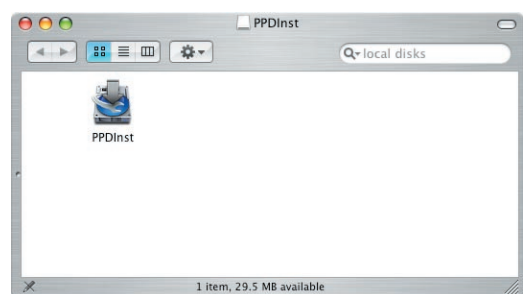
### NOTE

For Mac OS X 10.1/10.2/10.3, the **PPDInst.dmg.zip (PPDInst.dmg.sit for Mac OS X 10.1)** file can decompress by Stuffit Expander by Aladdin Systems.

Stuffit Expander is equipped normally in Mac OS X 10.1/10.2/10.3.

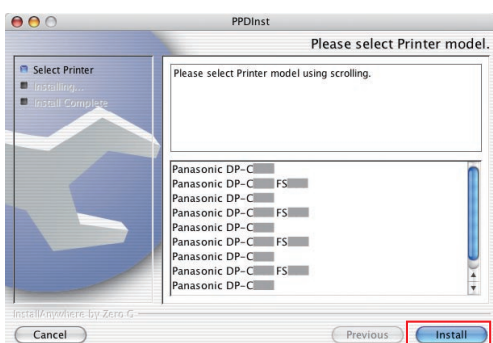
For Mac OS X 10.4, the **PPDInst.dmg.zip** file can decompress by Mac OS.

**4** Double-click the **PPDInst.dmg** or **PPDInst** icon to start the setup.

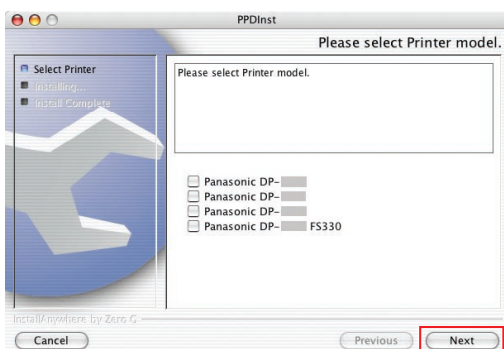


## 5 Select a printer, and click “Install” or “Next”.

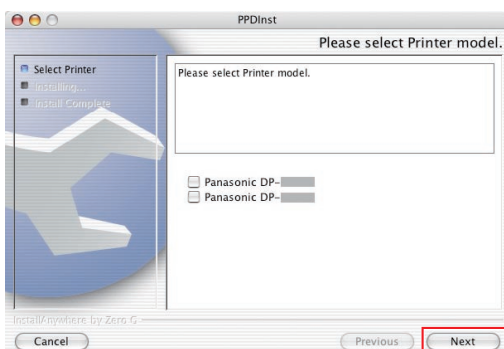
A screen changes with models.



- In the case of DP-C354/C264/C323/C263/C213
- Panasonic DP-Cxxx :  
Machine without a Finisher option or with the 1-bin Saddle-Stitch Finisher (DA-FS356) or Outer Tray (DA-XT320).
- Panasonic DP-Cxxx + FS350 :  
Machine with the 1-bin Stapler Finisher (DA-FS350) or Outer Tray (DA-XT320).

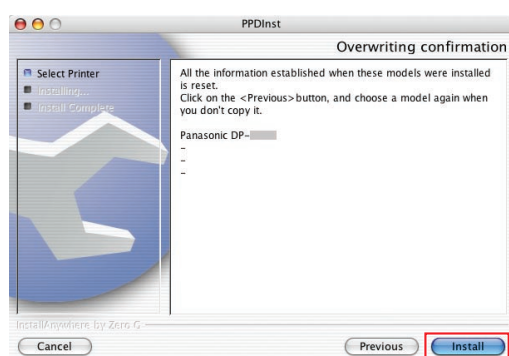


- In the case of DP-8060/8045/8035
- Panasonic DP-8035 + FS330 :  
Machine with the 2-bin Finisher (DA-FS330)



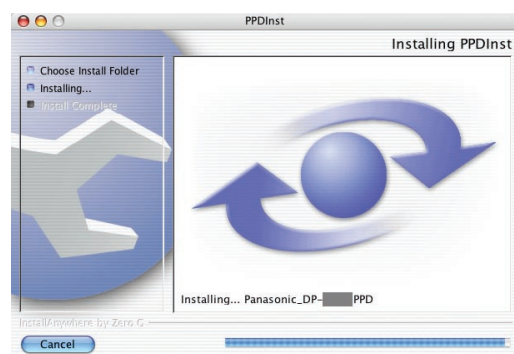
- In the case of DP-8020E/8020P

## 6 Verify the printer model to be installed and click “Install”.

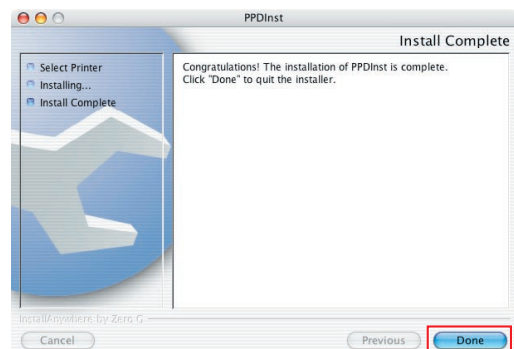


- When other PPD file has already been installed, this screen is displayed.

## 7 A progress bar indicates that the PPD file is being installed.

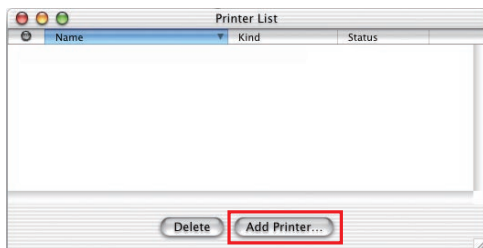


## 8 Click “Done”.



## Add the printer in the Printer List (for Mac OS X 10.1)

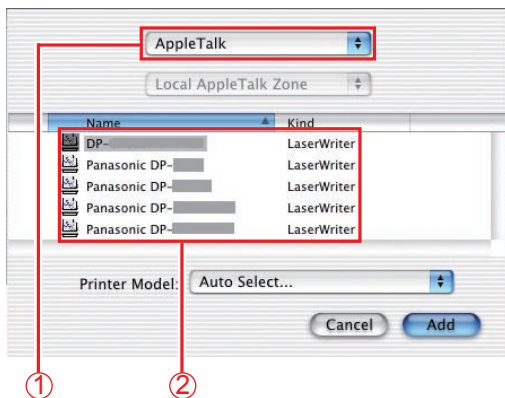
- 1 Open **Printer Center** from **Applications > Utilities** and select **[Add Printer...]** on **[Printer List]**.



- The next screen is displayed when adding a printer for the first time. Click **"Add..."**.

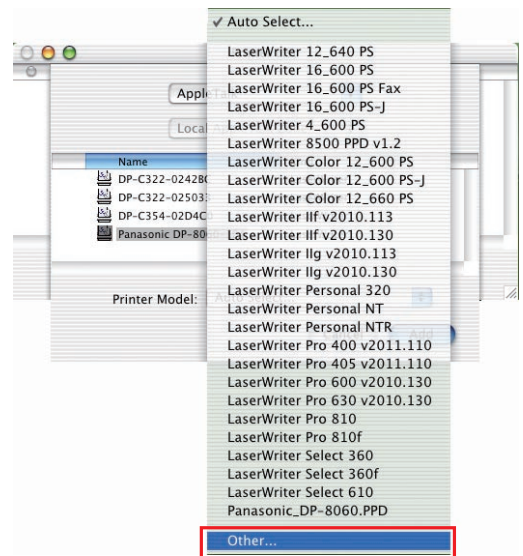


- 2 Select the printer connection method on the top menu. The list of the connected printer is displayed. Select the appropriate printer from **Name**.



- The Panasonic printer is compatible with AppleTalk. Selecting LPR connection is available, however, the operation is not guaranteed.

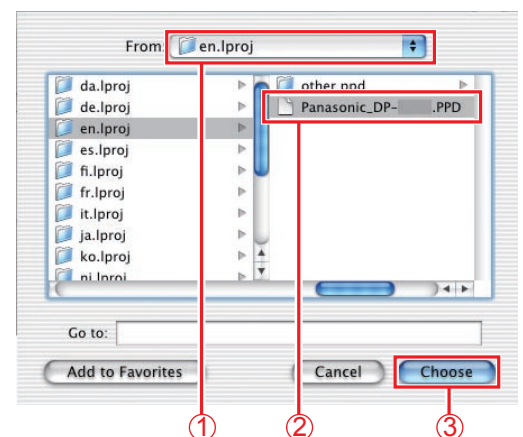
- 3 Select **[Other...]** from **Printer Model** pull down menu.



### NOTE

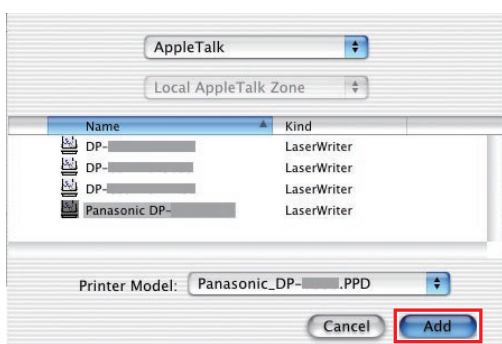
In order to choose a printer driver correctly, we recommend you to select from **"Other..."**.

- 4 Select the corresponding driver from **HDD > Library > Printers > PPDs > Contents > Resources > en.lproj...** and click **"Choose"**.





- 5** A status bar indicates that the printer is being created. Click **Add**.



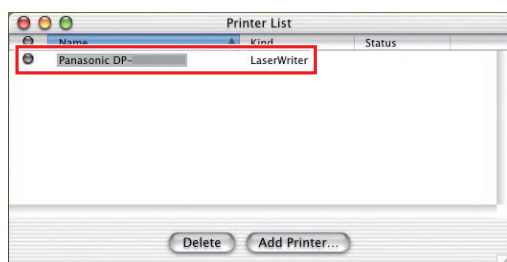
**<DP-C354/C264/C323/C263/C213>**

- Panasonic DP-Cxxx :  
Machine without a Finisher option or with the 1-bin Saddle-Stitch Finisher (DA-FS356) or Outer Tray (DA-XT320).
- Panasonic DP-Cxxx + FS350 :  
Machine with the 1-bin Stapler Finisher (DA-FS350) or Outer Tray (DA-XT320).

**<DP-8060/8045/8035>**

- Panasonic DP-8035 + FS330 :  
Machine with the 2-bin Stapler Finisher (DA-FS330)

- 6** The printer is added in the **Printer List**.

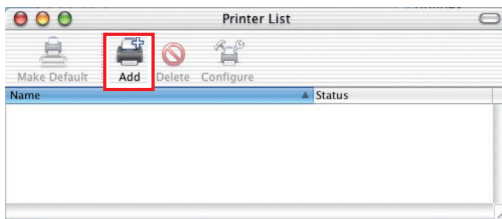


**Memo:**

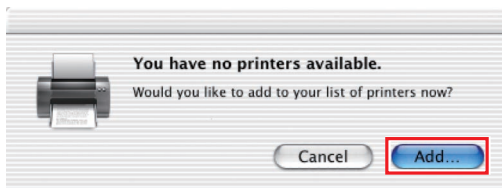


## Add the printer in the Printer List (for Mac OS X 10.2)

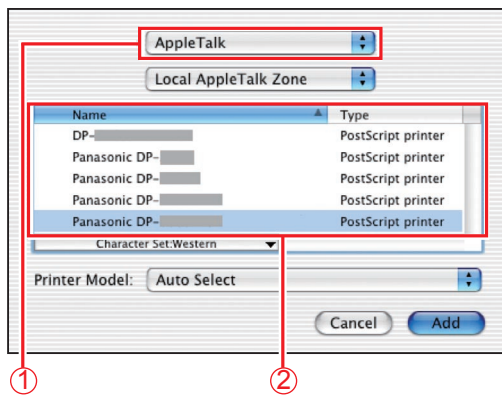
- 1 Open **Printer Center** from **Applications > Utilities** and select **[Add]** on **[Printer List]**.



- The next screen is displayed when adding a printer for the first time. Click **"Add..."**.

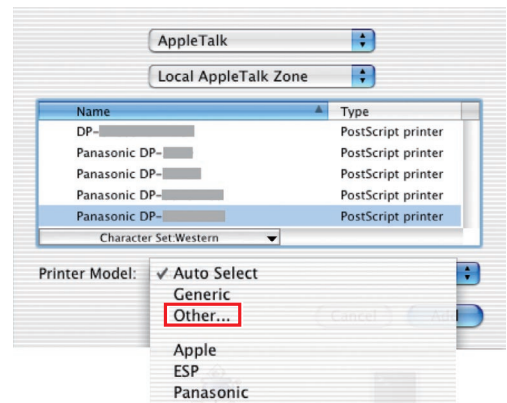


- 2 Select the printer connection method on the top menu. The list of the connected printer is displayed. Select the appropriate printer from **Name**.



- The Panasonic printer is compatible with AppleTalk. Selecting LPR connection is available, however, the operation is not guaranteed.

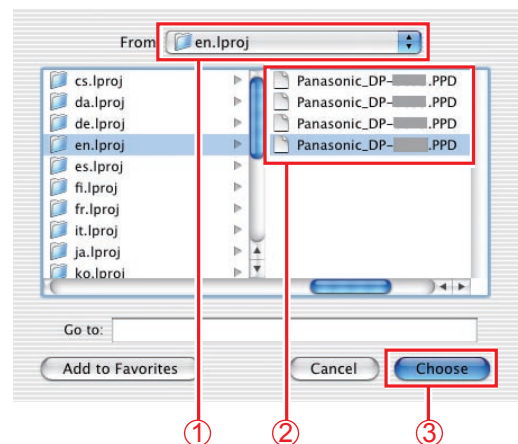
- 3 Select **[Other...]** from **Printer Model** pull down menu.



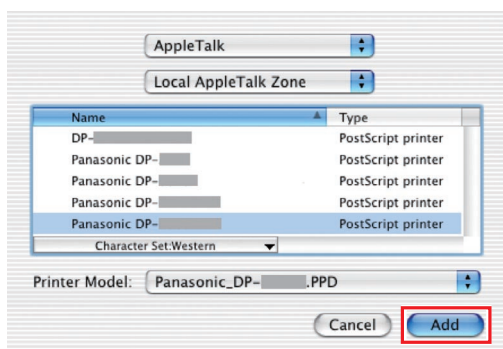
### NOTE

In order to choose a printer driver correctly, we recommend you to select from **"Other..."**.

- 4 Select the corresponding driver from **HDD > Library > Printers > PPDs > Contents > Resources > en.lproj...** and click **"Choose"**.



- 5** A status bar indicates that the printer is being created. Click **Add**.



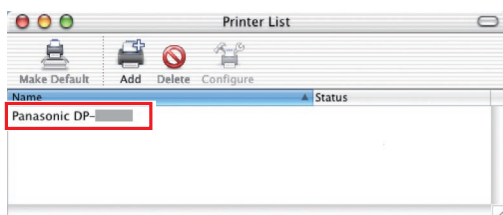
**<DP-C354/C264/C323/C263/C213>**

- Panasonic DP-Cxxx :  
Machine without a Finisher option or with the 1-bin Saddle-Stitch Finisher (DA-FS356) or Outer Tray (DA-XT320).
- Panasonic DP-Cxxx + FS350 :  
Machine with the 1-bin Stapler Finisher (DA-FS350) or Outer Tray (DA-XT320).

**<DP-8060/8045/8035>**

- Panasonic DP-8035 + FS330 :  
Machine with the 2-bin Stapler Finisher (DA-FS330).

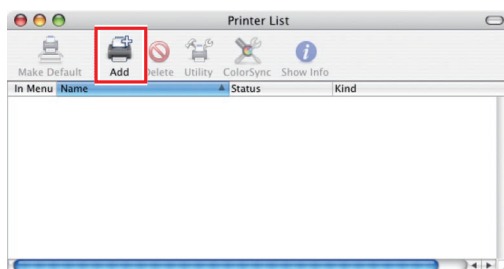
- 6** The printer is added in the **Printer List**.



**Memo:**

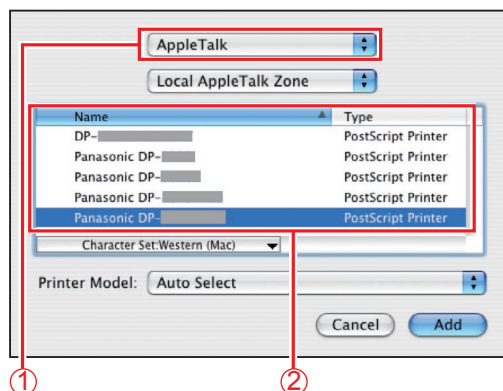
## Add the printer in the Printer List (for Mac OS X 10.3)

- 1 Open **Printer Setup Utility** from **Applications > Utilities** and select **[Add]** on **[Printer List]**.



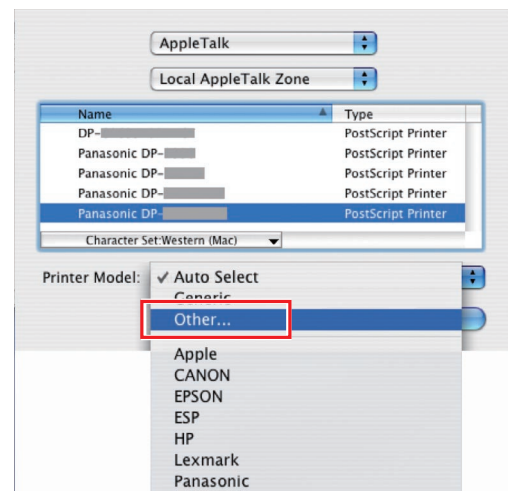
- The next screen is displayed when adding a printer for the first time. Click **"Add"**.

- 2 Select the printer connection method on the top menu. The list of the connected printer is displayed. Select the appropriate printer from **Name**.



- The Panasonic printer is compatible with AppleTalk. Selecting LPR connection is available, however, the operation is not guaranteed.

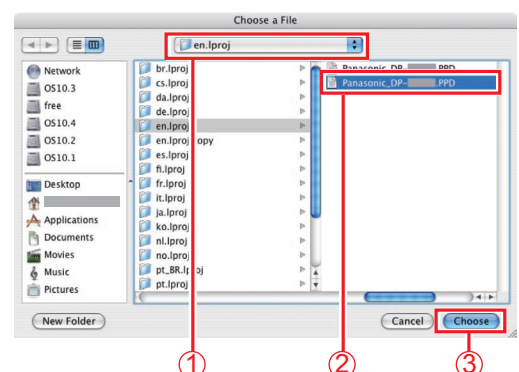
- 3 Select **[Other...]** from **Printer Model** pull down menu.



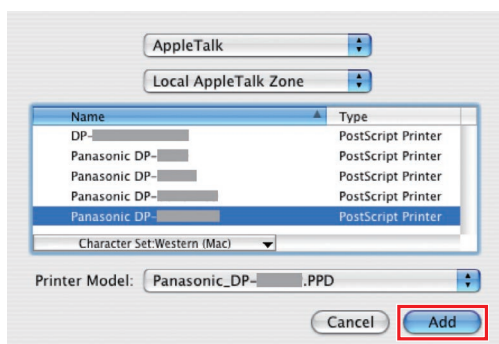
### NOTE

In order to choose a printer driver correctly, we recommend you to select from **"Other..."**.

- 4 Select the corresponding driver from **HDD > Library > Printers > PPDs > Contents > Resources > en.lproj...** and click **"Choose"**.



- 5 A status bar indicates that the printer is being created. Click **Add**.



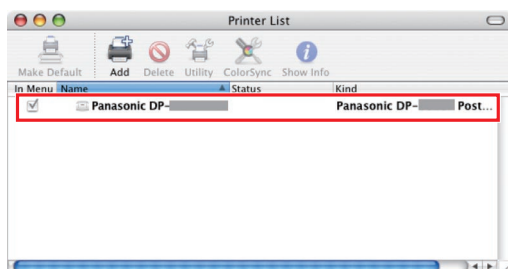
#### <DP-C354/C264/C323/C263/C213>

- Panasonic DP-Cxxx :  
Machine without a Finisher option or with the 1-bin Saddle-Stitch Finisher (DA-FS356) or Outer Tray (DA-XT320).
- Panasonic DP-Cxxx + FS350 :  
Machine with the 1-bin Stapler Finisher (DA-FS350) or Outer Tray (DA-XT320).

#### <DP-8060/8045/8035>

- Panasonic DP-8035 + FS330 :  
Machine with the 2-bin Stapler Finisher (DA-FS330).

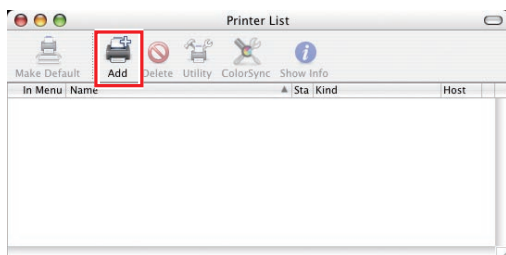
- 6 The printer is added in the **Printer List**.



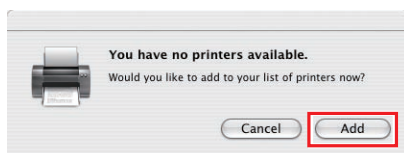
Memo:

## Add the printer in the Printer List (for Mac OS X 10.4)

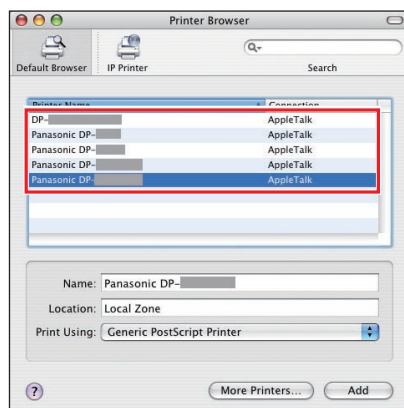
- 1 Open **Printer Setup Utility** from **Applications > Utilities** and select **[Add]** on **[Printer List]**.



- The next screen is displayed when adding a printer for the first time. Click **"Add"**.

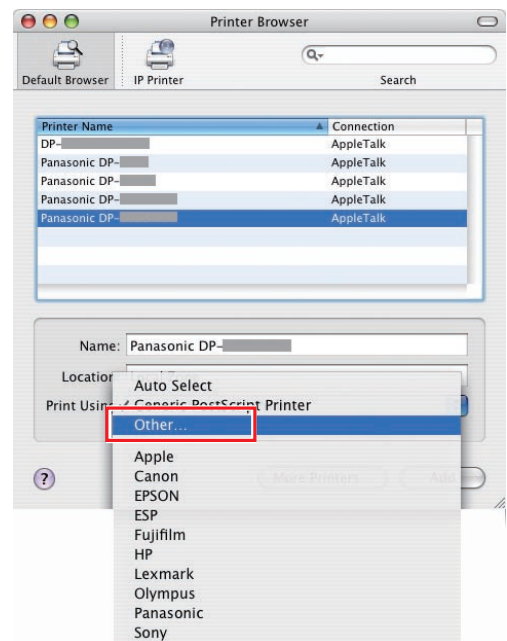


- 2 The list of the connected printer is displayed. Select the appropriate printer from **Printer Name**.



- The Panasonic printer is compatible with AppleTalk.

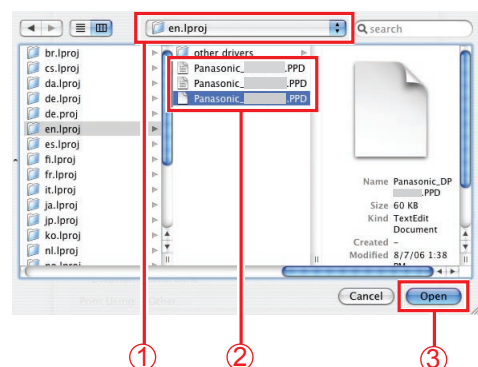
- 3 Select **[Other...]** from **Print Using** pull down menu.



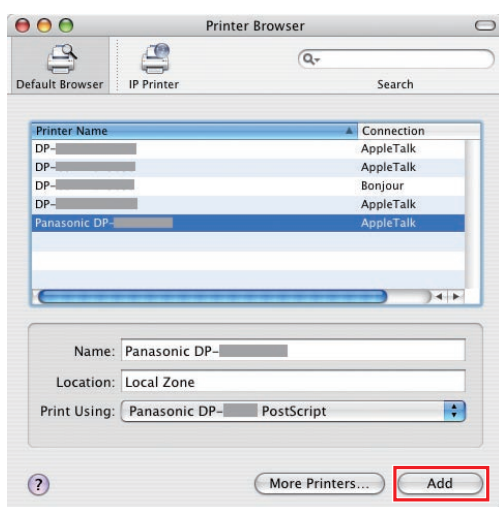
### NOTE

In order to choose a printer driver correctly, we recommend you to select from **"Other..."**.

- 4 Select the corresponding driver from **HDD > Library > Printers > PPDs > Contents > Resources > en.lproj...** and click **"Open"**.



- 5 A status bar indicates that the printer is being created. Click **Add**.



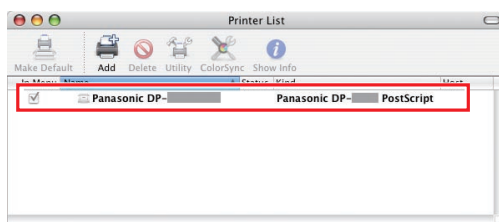
**<DP-C354/C264/C323/C263/C213>**

- Panasonic DP-Cxxx :  
Machine without a Finisher option or with the 1-bin Saddle-Stitch Finisher (DA-FS356) or Outer Tray (DA-XT320).
- Panasonic DP-Cxxx + FS350 :  
Machine with the 1-bin Stapler Finisher (DA-FS350) or Outer Tray (DA-XT320).

**<DP-8060/8045/8035>**

- Panasonic DP-8035 + FS330 :  
Machine with the 2-bin Stapler Finisher (DA-FS330).

- 6 The printer is added in the **Printer List**.



Memo:

## Device Settings

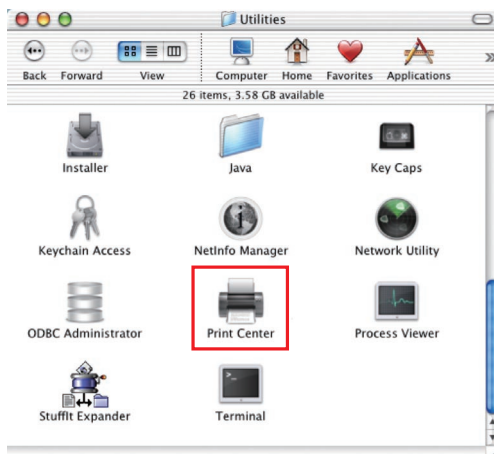
### ■Setting up for Mac OS X 10.2

In the Device Setting Dialog box, it can be set the optional device settings in detail.

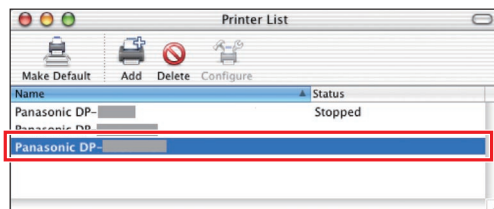
#### NOTE

A setup of apparatus cannot be performed in Mac OS X 10.1.

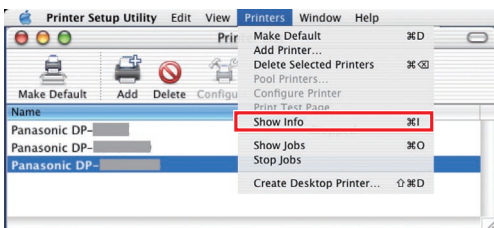
- 1 Open **Printer Center** from **Applications > Utilities**.



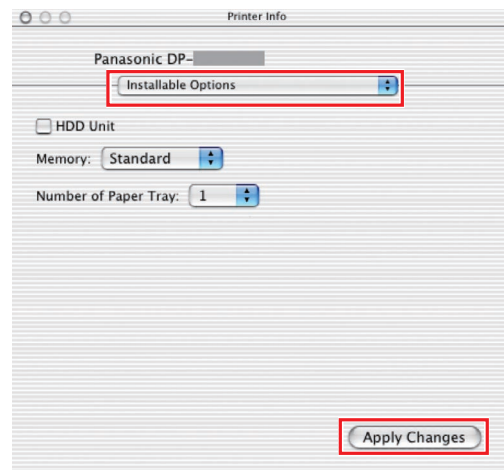
- 2 Select the corresponding printer from printer list.



- 3 Click **"Printers"** on from menu bar, and then **"Show Info"**.



- 4 Setting the **"Installable Options"**, and then click **"Apply Changes"**.

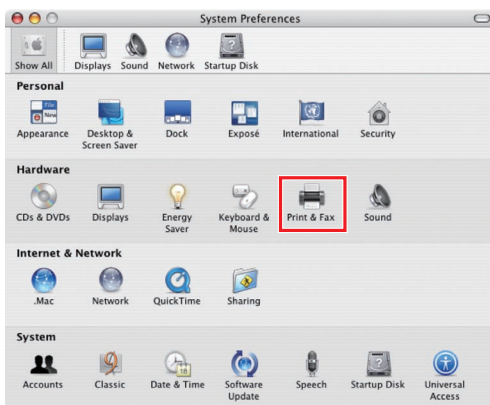




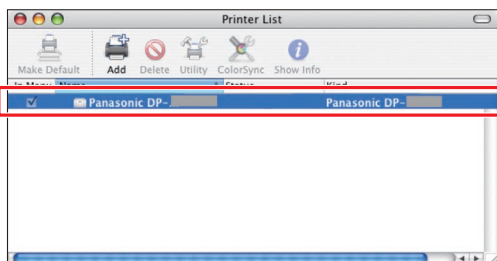
## ■Setting up for Mac OS X 10.3

In the Device Setting Dialog box, it can be set the optional device settings in detail.

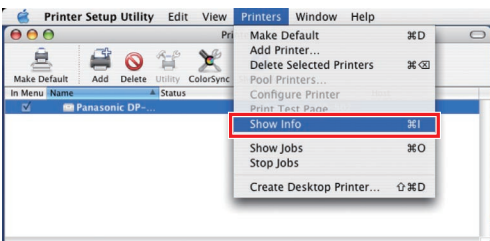
- 1 Open “**System Preferences**”, and click “**Printer & Fax**”.



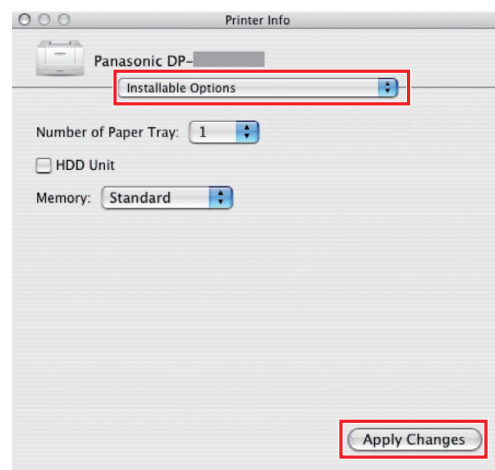
- 2 Select the corresponding printer from printer list.



- 3 Click “**Printers**” on from menu bar, and then “**Show Info**”.



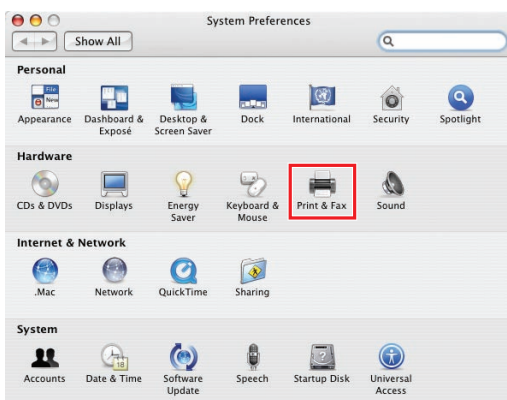
- 4 Setting the “**Installable Options**”, and then click “**Apply Changes**”.



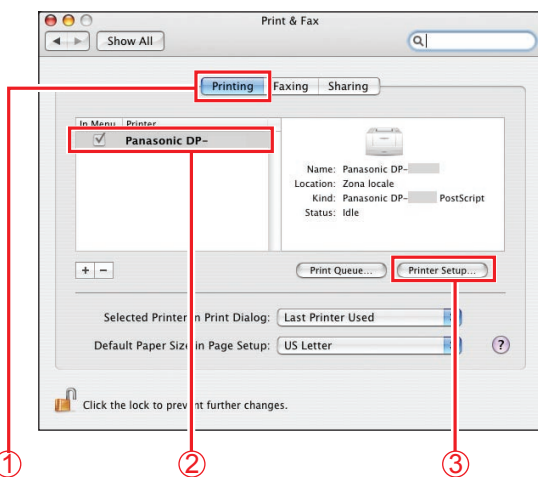
## ■Setting up for Mac OS X 10.4

In the Device Setting Dialog box, it can be set the optional device settings in detail.

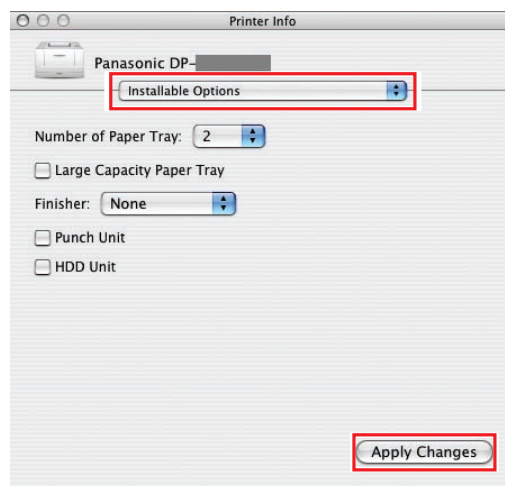
- 1 Open “**System Preferences**”, and then click “**Print & Fax**”.



- 2 Click “**Printing**”. Select printer, and then click “**Printer Setup...**”.



- 3 Setting the “**Installable Options**”, and then click “**Apply Changes**”.



## Memo

# Utilities

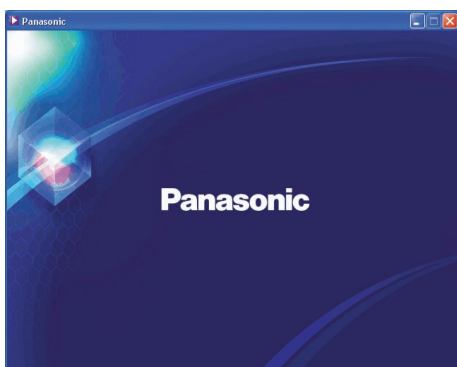
## Job Status Utility

### Installing the Job Status Utility

#### NOTE

- When installing on Windows NT 4.0 and Windows 2000/XP/Windows Server 2003, logon to the computer/network using an account with administrator rights.
- For Win98/Me, restart your PC after configuration. Reconfigure the device setting because it returns to the default setting after restart.
- Unless in the case of PostScript it installs PS driver security utility previously and sets up User ID, a Password, etc., Job Status Utility does not operate.
- Job Status Utility operates only by Windows OS.

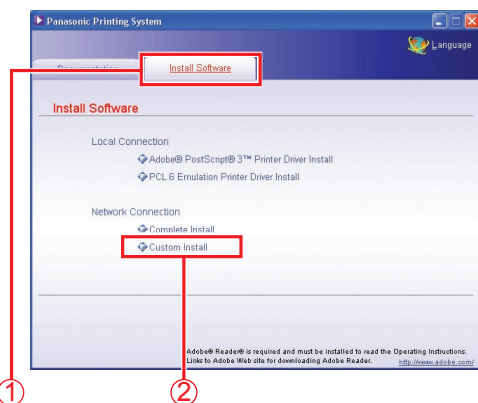
- 1 Insert the **“Panasonic Printing System”** CD-ROM.  
The opening screen is displayed.



#### NOTE

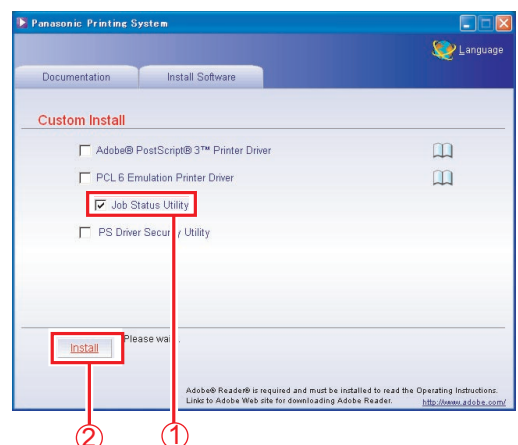
If the CD-ROM does not launch automatically, double click **“My Computer”** on the **Desktop** or on the **Start** menu, and then double click the **CD-ROM** icon.

- 2 Click **“Install Software”**, and then select **“Custom Install”**.



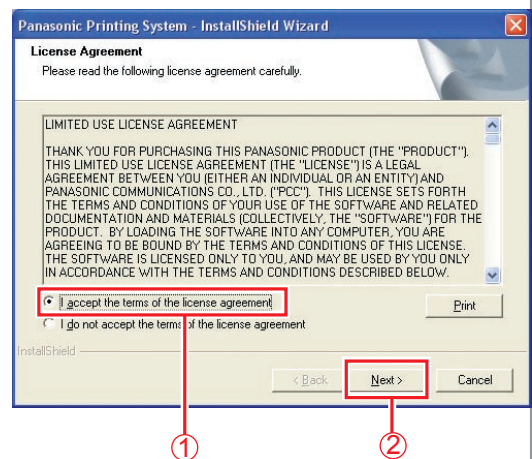
- The screen changes with models.

- 3 Check **“Job Status Utility”**, and then click **“Install”**.

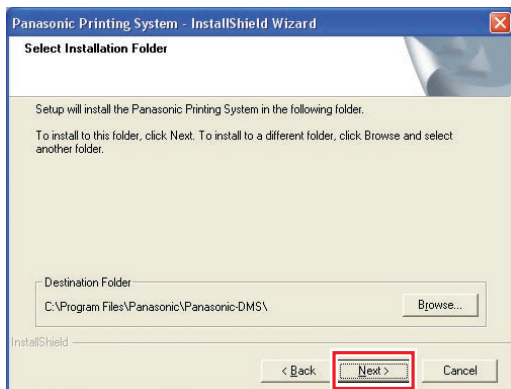


- The screen changes with models.

- 4 Check **“I accept the terms of the license agreement”**, and then click **“Next”**.

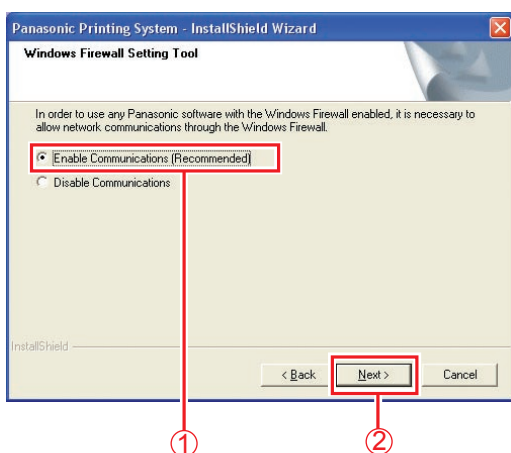


## 5 Click “Next”.



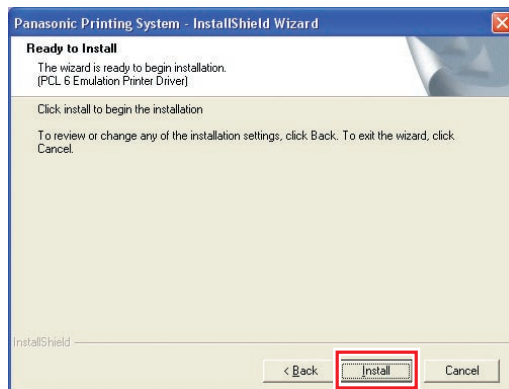
- Above Screen will not be shown when another model's **Panasonic Document Management System** has been installed.
- If you wish to change the folder, click “Browse”, and then the desired folder to install.

## 6 Select “Enable Communications (Recommended)”, and then click “Next”.

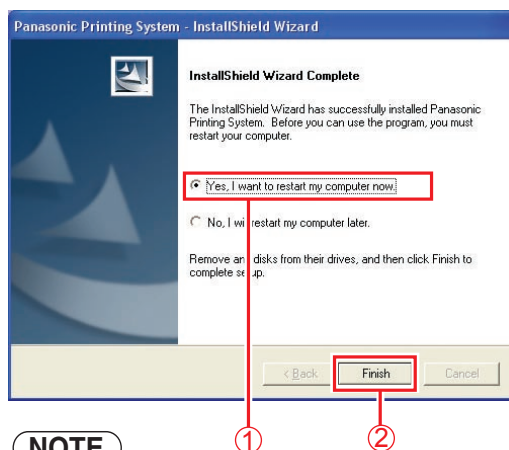


- Above screen only displays when you are installing the Job Status Utility on Windows XP (Service Pack 2 or later), or Windows 2003 Server (Service Pack 1 or later).

## 7 Click “Install”.



## 8 Check “Yes, I want to restart my computer now.”, and then click “Finish”.

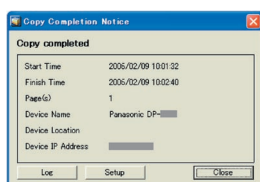


### NOTE

If you cannot shut down the computer immediately, choose “No, I will restart my computer later.”. However, the new setting is only applied after rebooting your computer.

## Setting Up the Job Status Utility


Ex: Copy Job

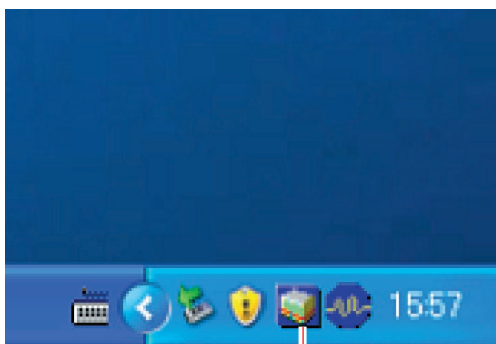


The Job Status Utility software will display the pop-up Completion Notice on your Windows Desktop when the Print, PC Fax, Copy, or a Fax job is completed.

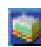
The information displayed in the Completion Notice vary according to the type of job being performed.

**1** Install the Job Status Utility, located on the Panasonic Printing System CD-ROM.

**2** Confirm that the Job Status Utility icon  is shown on the task bar.




Panasonic Job Status Utility Icon

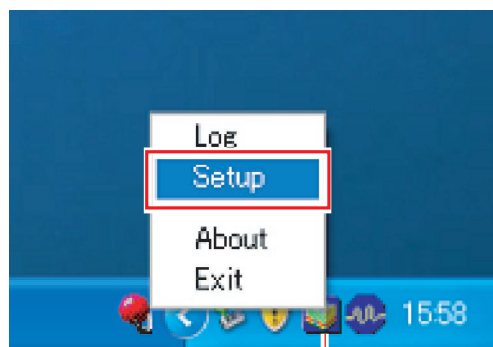
- If the Job Status Utility icon  is not shown on the task bar, click "Start", select "All Programs" → "Panasonic" → "Job Status Utility" → "Job Status Utility" to activate the Job Status Utility icon.

**3** For PC Fax and PC Print only  
Setup the Job Status Utility as described next.

### For Copy, Fax and Internet Fax only

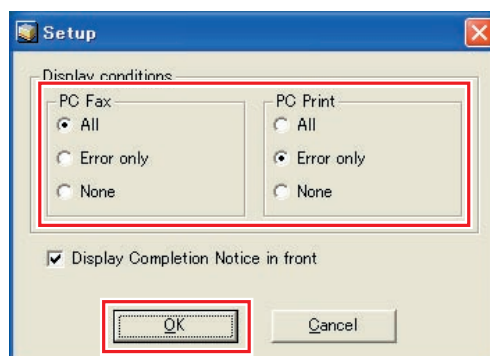
Refer to the Operating Instructions ( For Communications Utility ) on the provided CD-ROM.

**4** Right-click the Job Status Utility icon  on the task bar, and select "Setup" from the menu.



Panasonic Job Status Utility Icon

**5** Choose the display condition for the Setup window, and then select "OK".



- All** : Always displays after each transmission or print job.
- Error only** : Displays only when an error occurs.
- None** : Does not display.

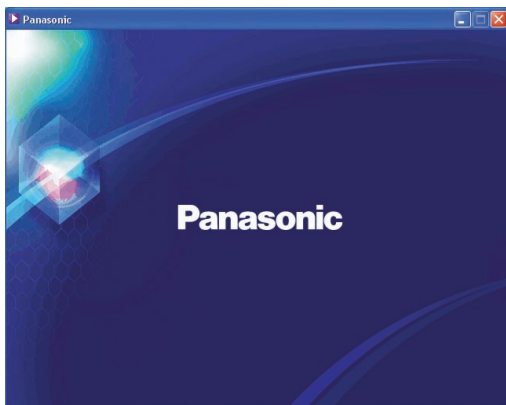
# PS Driver Security Utility

## Installing the PS Driver Security Utility for Windows

### NOTE

- When installing on Windows NT 4.0 and Windows 2000/XP/Windows Server 2003, logon to the computer/network using an account with administrator rights.
- For Win98/Me, restart your PC after configuration. Reconfigure the device setting because it returns to the default setting after restart.
- It is not necessary to install it for the Security Utility of the same version.

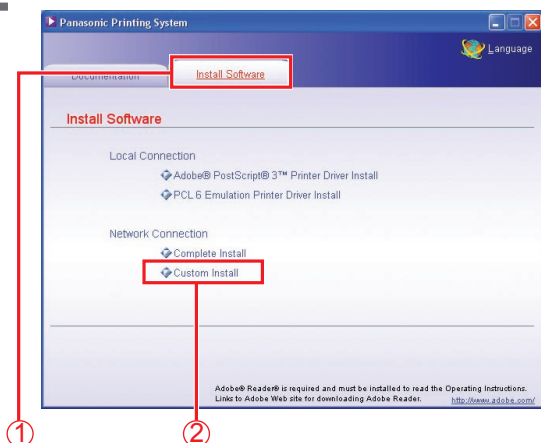
- 1 Insert the “**Panasonic Printing System**” CD-ROM.  
The opening screen is displayed.



### NOTE

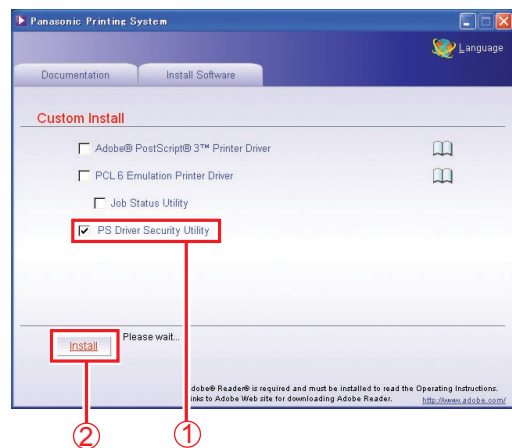
If the CD-ROM does not launch automatically, double click “**My Computer**” on the **Desktop** or on the **Start** menu, and then double click the **CD-ROM** icon.

- 2 Select “**Custom Install**”.



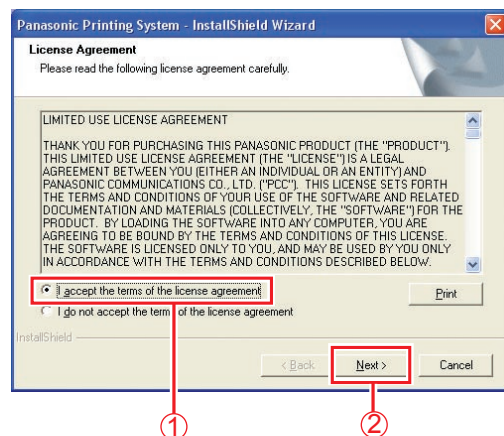
- The screen changes with models.

- 3 Check “**PS Driver Security Utility**”, and then click “**Install**”.



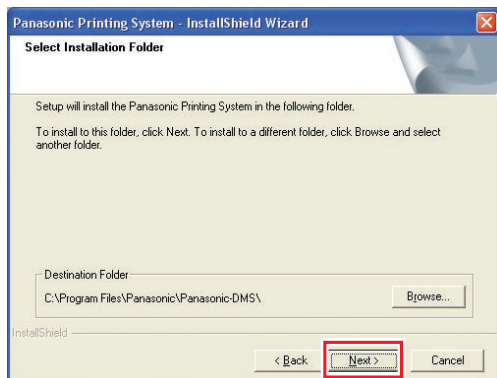
- The screen changes with models.

- 4 Check “**I accept the terms of the license agreement**”, and then click “**Next**”.



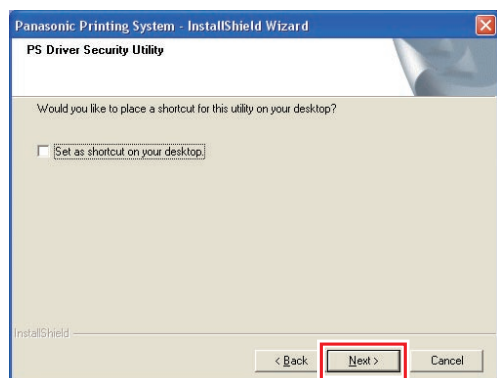


## 5 Click “Next”.

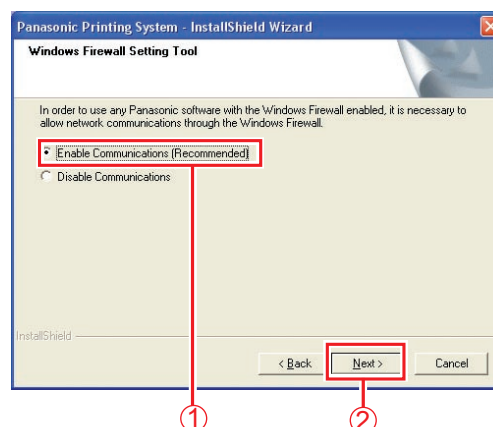


- Above Screen will not be shown when another model's **Panasonic Document Management System** has been installed.
- If you wish to change the folder, click “Browse”, and then the desired folder to install.

## 6 Check “Set as shortcut on your desktop”, and then click “Next”.

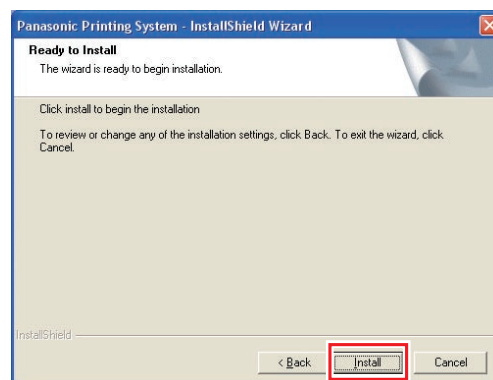


## 7 Select “Enable Communications (Recommended)”, and then click “Next”.

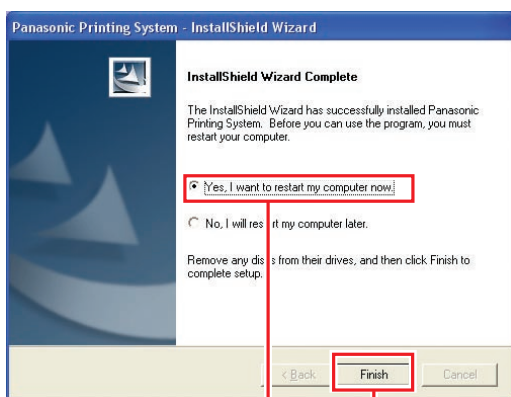


- Above screen only displays when you are installing the Job Status Utility on Windows XP (Service Pack 2 or later), or Windows 2003 Server (Service Pack 1 or later).

## 8 Click “Install”.



- 9 Check **“Yes, I want to restart my computer now.”**, and then click **“Finish”**.



**NOTE**

If you cannot shut down the computer immediately, choose **“No, I will restart my computer later.”**. However, the new setting is only applied after rebooting your computer.

Memo:

## Using the PS Driver Security Utility for Windows

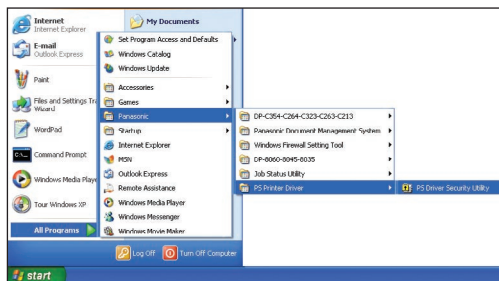
### NOTE

- When installing on Windows NT 4.0 and Windows 2000/XP/Windows Server 2003, logon to the computer/network using an account with administrator rights.
- For Win98/Me, restart your PC after configuration. Reconfigure the device setting because it returns to the default setting after restart.
- When you connect your PC to multiple printers, you don't have to install PS Driver Security Utility to one PC more than twice. Do not install PS Driver Security Utility repeatedly when it has already been installed.

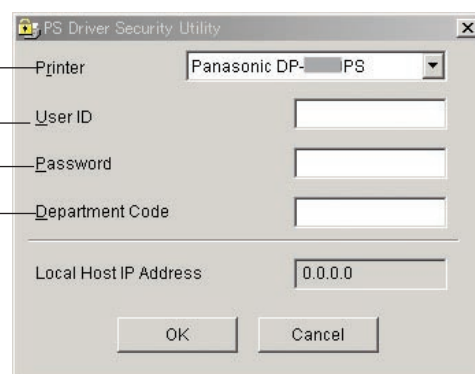
- 1 The icon of **PS Driver Security Utility** on a desktop is double-clicked.



- When opening from a start menu, click [**All Programs > Panasonic > PS Printer Driver > PS Driver Security Utility**]



- 2 The setting screen of PS Driver Security Utility appears.



1. Printer  
Select the model No. of this machine.
2. User ID  
Type User ID (Up to 8 digits). User ID is required when printing the Confirmation Print, Mail Box and Security Box.
3. Password  
Type the Password (4 digits) for a Security Box.
4. Department Code  
Type the Department Code (Up to 8 digits) which is used for the administrator.

### NOTE

The information on the before item of 1-4 inputs, and if PS Driver Security Utility is opened again, Local Host IP Address will appear automatically.

- 3 Click "**OK**".

## Installing the PS Driver Security Utility for Macintosh

### NOTE

For Mac OS X, follow the procedures below when installing the PS Driver Security Utility.

1. Install the PPD file.
  2. Change the settings using the PS Driver Security Utility.
  3. Add the PS printer driver.
- The driver is required to be deleted if it has already been installed.

**1** Exit from all applications, then insert the **Panasonic Printing System CD** into the CD-ROM drive.

**2** Double-click the CD icon on the desktop.

**For Mac OS 8.6/9.x :**

Open **Macintosh > English > SecurityUtility > MacOS9** folder.

**For Mac OS X 10.1 :**

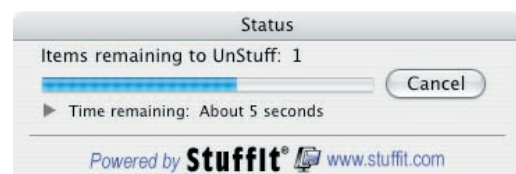
Open **Macintosh > English > SecurityUtility > MacOSX101** folder.

**For Mac OS X 10.2, later :**

Open **Macintosh > English > SecurityUtility > MacOSX102-later** folder.



**3** Copy **PSSecure.dmg.zip** (**PSSecure.dmg.sit** for OS X 10.1, **PSSecure.bin** for OS 8.6/9.x) into your desktop. Then double-click the **PSSecure.dmg.zip** (**PSSecure.dmg.sit** for OS X 10.1, **PSSecure.bin** for OS 8.6/9.x) icon to decompress it.



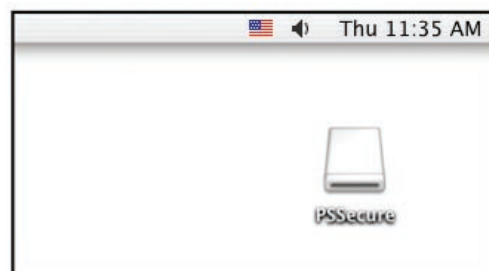
### NOTE

The **PSSecure.dmg.zip** (**PSSecure.dmg.sit** for OS X 10.1, **PSSecure.bin** for OS 8.6/9.x) file can decompress by Stuffit Expander by Aladdin Systems.

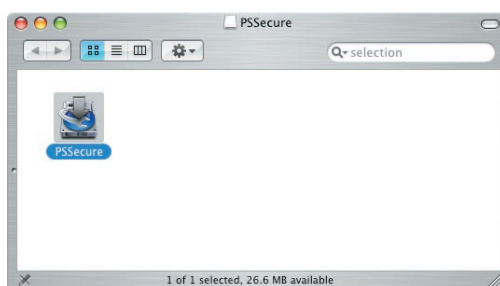
Stuffit Expander is equipped normally in Mac OS 8.6/9.x, OS X 10.1/10.2/10.3.

For Mac OS10.4, **PSSecure.dmg.zip** file can decompress by Mac OS.

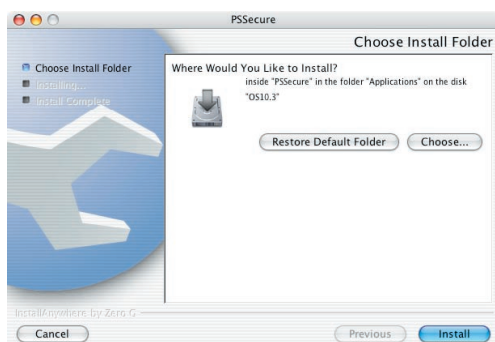
**4** Open **PSSecure.dmg** or **PSSecure** on your desktop (Only OS X).



- 5 Double-click the **PSSecure** icon to start the setup.



- 6 Click **“Install”**.



- If you want to change install folder, click the **“Choose...”** button, and select desired folder name.

- 7 A progress bar indicates that the PS Driver Security Utility is being installed.



- 8 Click **“Done”**.



- 9 The **PS Driver Security Utility** icon is created on your desktop.



**NOTE**

For Mac OS 8.6/9.x, the application is installed under **Applications (Mac OS 9) > PPSecure** folder by default.  
For Mac OS 10.1/10.4, the application is installed under **Applications > PPSecure** folder by default.

## Using the PS Driver Security Utility for Macintosh

### NOTE

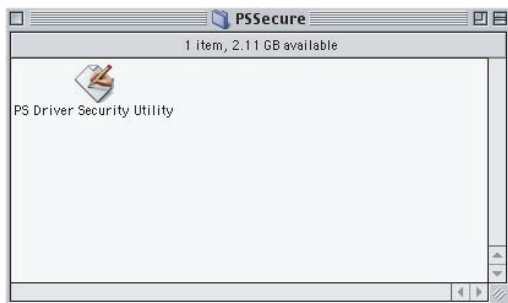
First of all, install the Security Utility correctly referring to page 89.

- 1 Double-click the icon of **PS Driver Security Utility** on a desktop.

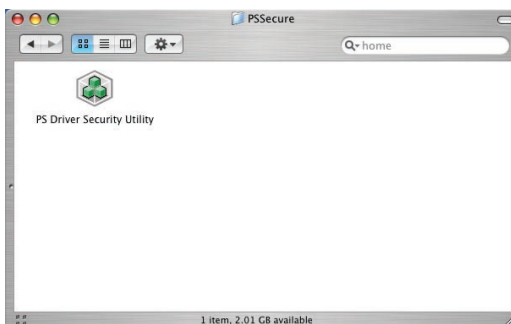


Since PS Driver Security Utility is installed in the **[Applications] > [PSSecure]** folder as initial setting, for this reason, it double-clicks the icon of PS Driver Security Utility in a **[PSSecure]** folder.

- In case of Mac OS 8.6/9.x, it is displayed “**Applications (Mac OS 9)**”.
- The screen changes with Mac OS.



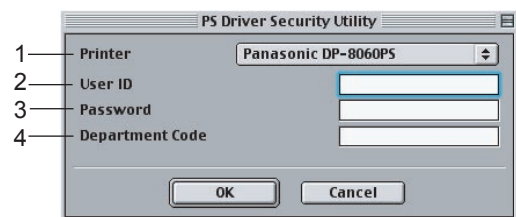
<Mac OS 8.6/9.x>



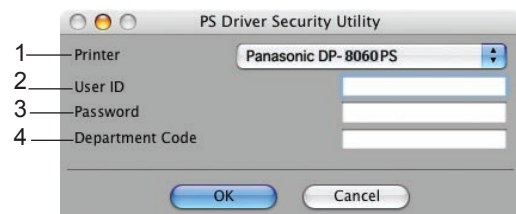
<Mac OS X>

- 2 PS Driver Security Utility appears.

- The screen changes with Mac OS.



<Mac OS 8.6/9.x>



<Mac OS X>

- 3 Input the following information.

1. Printer  
Select the model No. of this machine.
2. UserID  
Type User ID (Up to 8 digits). User ID is required when printing the Confirmation Print, Mail Box and Security Box.
3. Password  
Type the Password (4 digits) for a Security Box.
4. Department Code  
Type the Department Code (Up to 8 digits) which is used for the administrator.

- 4 Click “**OK**”.

**USA Only**

## **WARRANTY**

PANASONIC DIGITAL DOCUMENT COMPANY MAKES NO WARRANTIES, GUARANTEES OR REPRESENTATIONS, EXPRESSED OR IMPLIED, TO CUSTOMER WITH RESPECT TO THIS PANASONIC MACHINE, INCLUDING BUT NOT LIMITED TO, ANY IMPLIED WARRANTY OF MERCHANTABILITY OR FITNESS FOR A PARTICULAR PURPOSE.

PANASONIC DIGITAL DOCUMENT COMPANY ASSUMES NO RISK AND SHALL NOT BE SUBJECT TO LIABILITY FOR ANY DAMAGE, INCLUDING, BUT NOT LIMITED TO DIRECT, INDIRECT, SPECIAL, INCIDENTAL OR CONSEQUENTIAL DAMAGES OR LOSS OF PROFITS SUSTAINED BY THE CUSTOMER IN CONNECTION WITH THE USE OR APPLICATION OF THIS PANASONIC MACHINE. SEE YOUR DEALER FOR DETAILS OF DEALER'S WARRANTY.

© 2006 Panasonic Communications Co., Ltd. All Rights Reserved.

Unauthorized copying and distribution is a violation of law.

The contents of these Operating Instructions are subject to change without notice.

For Service, Call: \_\_\_\_\_

Panasonic Digital Document Company,  
Unit of Panasonic Corporation of North America  
One Panasonic Way  
Secaucus, New Jersey 07094  
<http://panasonic.co.jp/pcc/en/>

Panasonic Canada Inc.  
5770 Ambler Drive  
Mississauga, Ontario L4W 2T3  
<http://www.panasonic.ca>

C1006-1116 (06)  
PJQMC0923YA  
November 2006  
Published in Japan