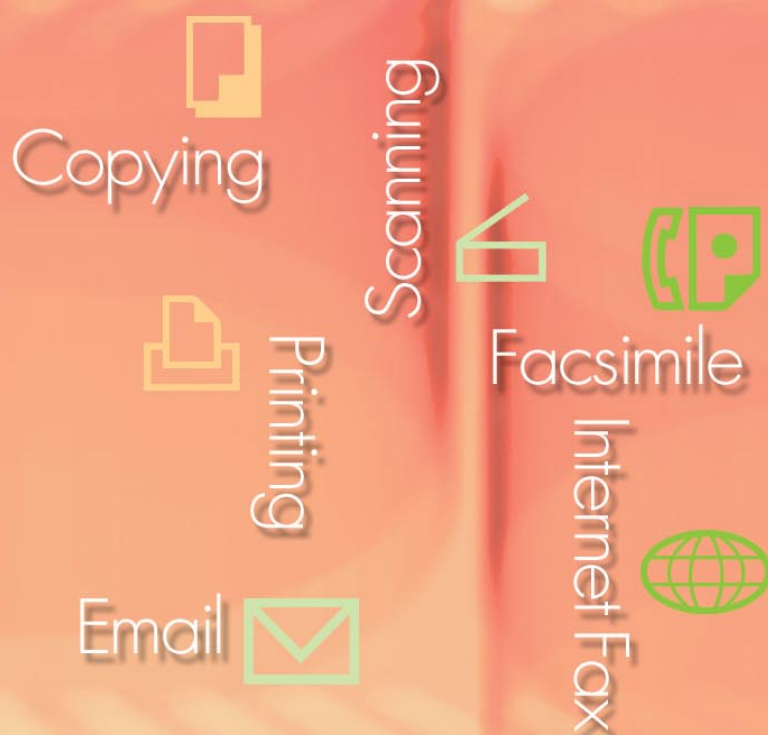


## Operating Instructions Software ( Communications Utility )

For Digital Imaging Systems



The following trademarks and registered trademarks are used throughout this manual:

Microsoft, MS-DOS, Windows, Windows NT and Windows Server are either registered trademarks or trademarks of Microsoft Corporation in the USA and other countries. i386, i486, Celeron, Intel Centrino and Pentium are trademarks of Intel Corporation. The USB-IF Logos are trademarks of Universal Serial Bus Implementers Forum, Inc. TrueType is a registered trademark of Apple Computer, Inc. Novell, NetWare, IntranetWare, NDS are registered trademarks of Novell, Inc. in the USA and other countries.

PEERLESSPage™ is a trademark of the PEERLESS Systems Corporation; and, PEERLESSPrint and Memory Reduction Technology® are registered trademarks PEERLESS Systems Corporation; and, COPYRIGHT © 2005 PEERLESS Systems Corporation. COPYRIGHT © 2005 Adobe Systems Incorporated. All Rights Reserved; and Adobe® PostScript® 3™

Universal Font Scaling Technology (UFST) and all typefaces have been licensed from Agfa Monotype.

Agfa® and the Agfa rhombus are registered trademarks of Agfa-Gevaert N.V. registered in the U.S. Patent and Trademark Office and may be registered in other jurisdictions. Monotype® is a registered trademark of AMT registered in the U.S. Patent and Trademark Office and may be registered in other jurisdictions.

ColorTune® is a registered trademark of Agfa-Gevaert N.V. registered in the U.S. Patent and Trademark Office and may be registered in other jurisdictions. Profile Tool Kit™, Profile Studio™ and Profile Optimizer™ are trademarks of AMT and may be registered in certain jurisdictions. PCL is a trademark of Hewlett-Packard Company.

Adobe, Acrobat, Adobe Reader, Adobe Type Manager, PostScript, PostScript 3 and Reader are either registered trademarks or trademarks of Adobe Systems Incorporated in the United States and/or other countries.

All other product/brand names, trademarks or registered trademarks identified herein are the property of their respective owners.

© 2006 Panasonic Communications Co., Ltd. All Rights Reserved.  
Unauthorized copying and distribution is a violation of law.  
Published in Japan.

The contents of these Operating Instructions are subject to change without notice.

## Table of Contents

---

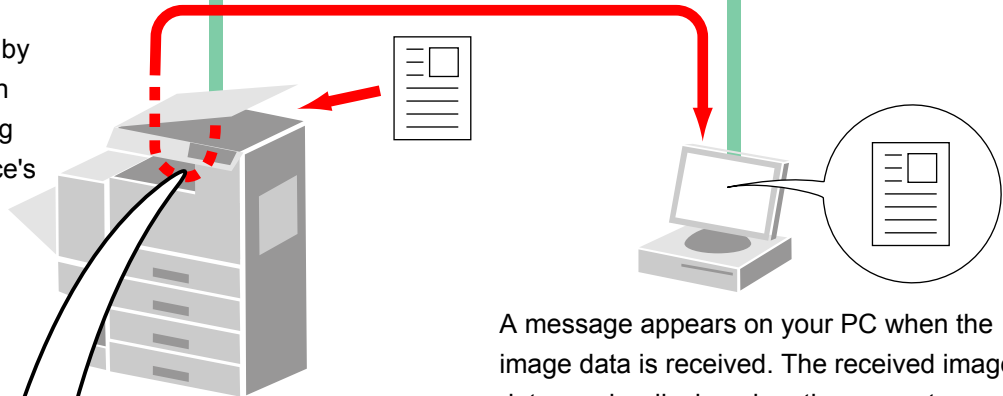
<b>General Description .....</b>	<b>4</b>
<b>System Requirements .....</b>	<b>6</b>
<b>Scanner Settings .....</b>	<b>8</b>
■ Scanner Reception Notification .....	8
■ Scanner Configuration.....	9
■ Panasonic Communications Utility .....	12

## General Description

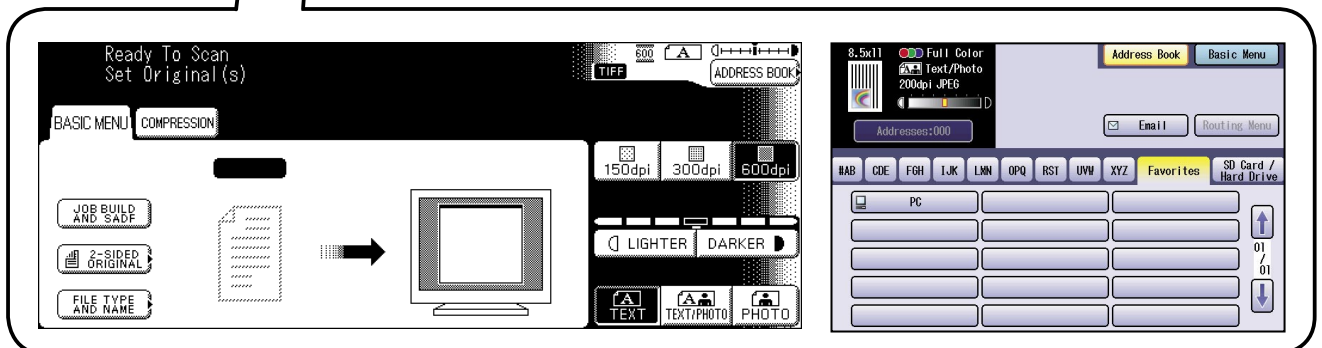
The Communications Utility software uses devices connected to the network to scan documents, and receives the scanned image data on a computer.

The scanned image data is automatically sent to a specified computer.

Scanning is performed by placing the document in the scanner and starting the scan from the device's control panel.



A message appears on your PC when the image data is received. The received image data can be displayed on the computer screen.



The Panasonic Document Management System includes the Panasonic Communications Utility for setting up the scanner, PC-Fax, and other functions on Panasonic models.

To enable the Network Scanning feature and/or Panafax Desktop, the Panasonic Communications Utility must be activated on your PC in advance.

The Panasonic Communications Utility is permanently displayed in the Windows Taskbar. The following settings are available from the menu opened by right-clicking on the icon.

- Setup the "Reception Notification" display method for a scanner, PC-Fax, or other device.
- Open the Scanner Configuration dialog box.
- Start the Panafax Desktop application.
- Open the Fax Receive Log Window.

## System Requirements

- Personal Computer : IBM PC/AT and compatibles (CPU Pentium II or greater is required, Pentium 4 or greater is recommended)
- Operating System : Windows 98\*<sup>1</sup>, Windows Me\*<sup>2</sup>, Windows NT 4.0\*<sup>3</sup> (With Service Pack 3 or later is required), Windows 2000\*<sup>4</sup>, Windows XP\*<sup>5</sup>, Windows Server 2003\*<sup>6</sup>
- System Memory : The minimum recommended Memory for each OS is as follows:
  - Windows 98, Windows Me : 128 MB or greater
  - Windows 2000, Windows XP,  
Windows NT 4.0,  
Windows Server 2003 : 256 MB or greater
- Free Disk Space : 200 MB or greater
- CD-ROM Drive : Used for installing the software and utilities from the CD-ROM.
- Interface : 10Base-T/100Base-TX Ethernet port

\*1 Microsoft® Windows® 98 operating system (hereafter Windows 98)

\*2 Microsoft® Windows® Millennium Edition operating system (hereafter Windows Me)

\*3 Microsoft® Windows NT® operating system Version 4.0 (hereafter Windows NT 4.0)

\*4 Microsoft® Windows® 2000 operating system (hereafter Windows 2000)

\*5 Microsoft® Windows® XP operating system (hereafter Windows XP)

\*6 Microsoft® Windows Server™ 2003 operating system (hereafter Windows Server 2003)

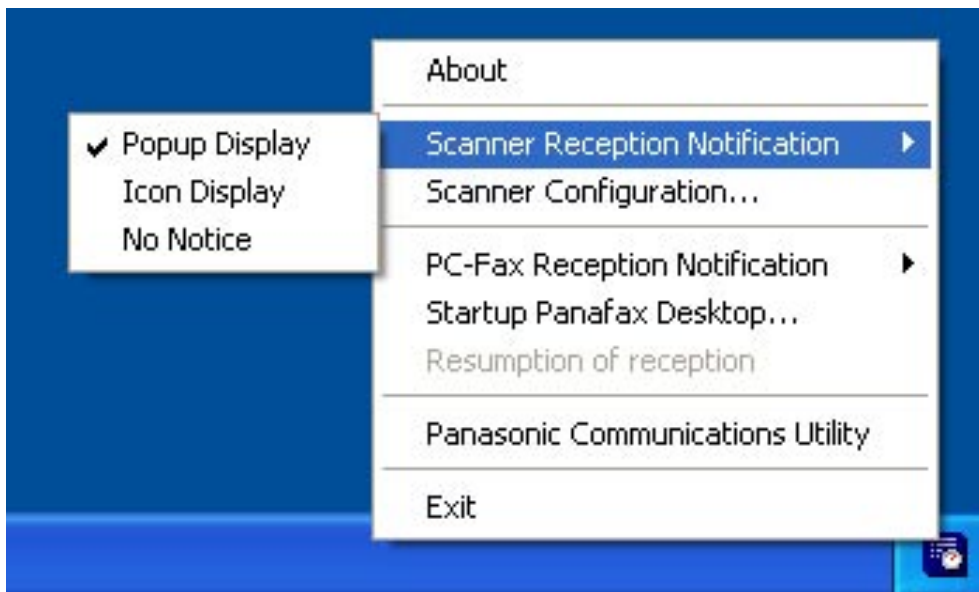
## Memo

## Scanner Reception Notification

To activate the **Panasonic Communications Utility**, select **Panasonic** → **Panasonic Document Management System** → **Communications Utility** in the **All Programs** folder of the **Start** menu.  
(i.e. Windows XP)

### • Scanner Reception Notification

Right-click the **Panasonic Communications Utility** icon, select the **Scanner Reception Notification**, and then select either **Popup Display**, or **Icon Display**.




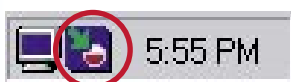
#### <Popup Display>

Displays the following screen on the desktop and the **Panasonic Communications Utility** icon in the taskbar changes appearance when the scanned image is received.



#### <Icon Display>

When the scanned image is received, the  icon is displayed on the desktop and the **Panasonic Communications Utility** icon changes appearance, as shown below.



#### <No Notice>

No notification message is displayed on your PC even when the scanned image is received.



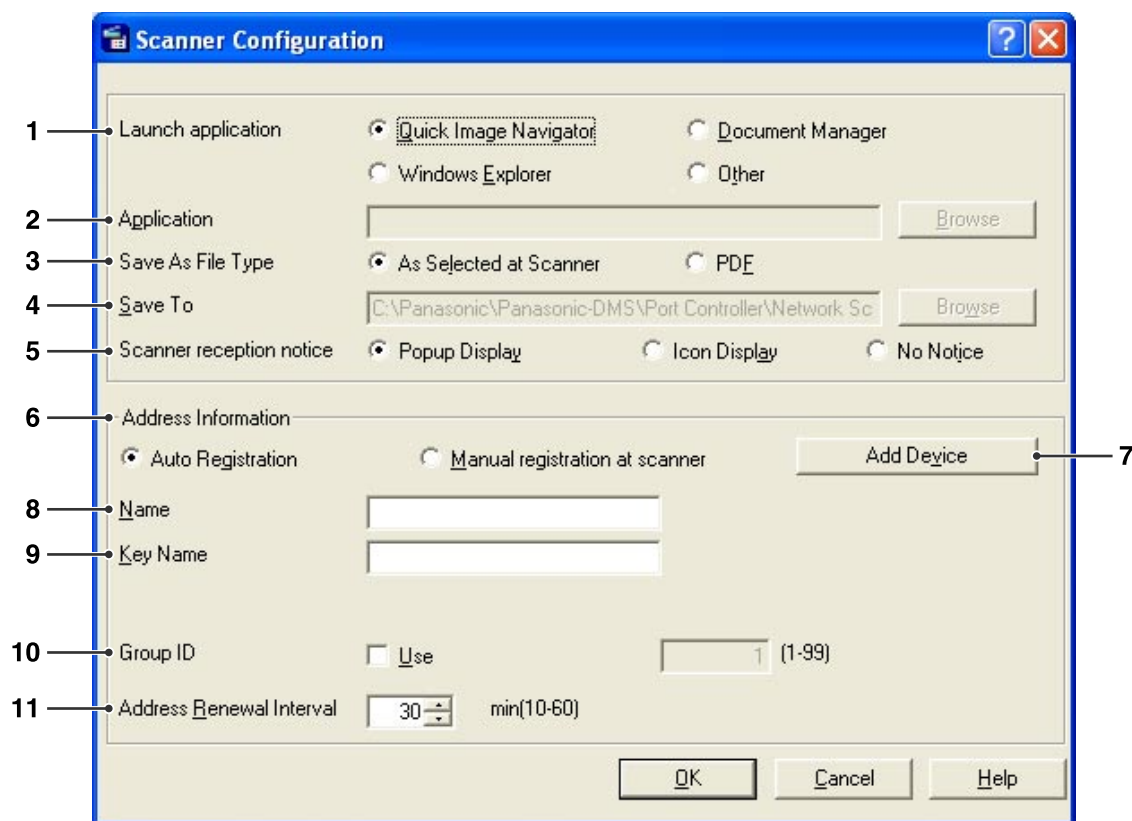
## Scanner Configuration

Right-click on **Panasonic Communications Utility** icon, and select **Scanner Configuration....**



*Continued on the next page...*

The Scanner Configuration Window appears as shown below.



#### 1. Launch application

Select the application that will receive the scanner's data (Quick Image Navigator, Document Manager Windows Explorer, or Other application).

#### 2. Application

Select the application program path for opening the scanned image.

#### 3. Save As File Type

Select the file format type to save the scanned image.

#### 4. Save to

Select the path to save the scanned image.

#### 5. Scanner reception notice

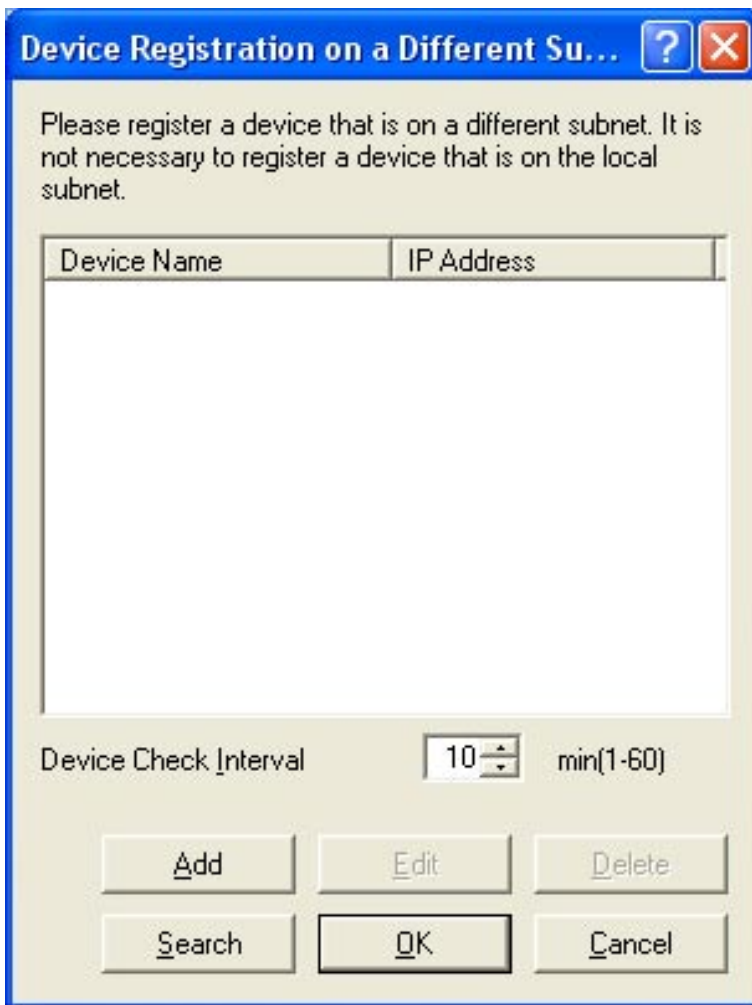
Select the viewing mode for the scanner reception notice.

#### 6. Address Information

Select one of the following:

<b>Auto Registration</b>	Your PC's Address Information will be automatically registered into the Address Book of the device(s).
<b>Manual registration at scanner</b>	Manually register your PC's Address Information into the Address Book of the device.

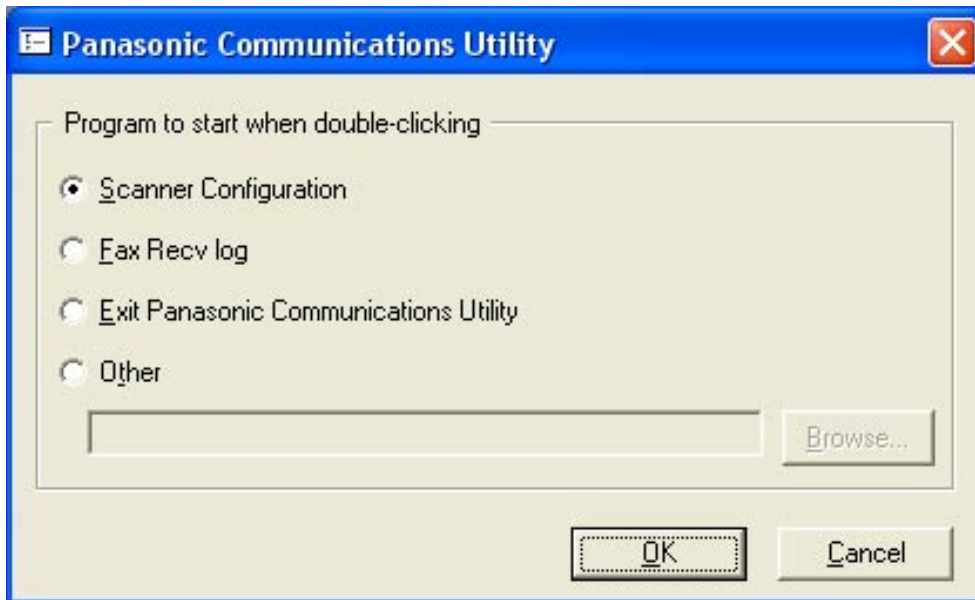
7. **Add Device** button  
Click **Add** and enter the IP addresses of the devices.



8. **Name**  
Specifies your PC Name to be registered to the scanner address book of the device(s). (Up to 15 characters)
9. **Key Name**  
Specifies the Key Name to be registered to the scanner address book of the device(s). (Up to 15 characters)
10. **Group ID**  
Specifies the Group ID to register your PC's Address Information to the device(s) on your network.  
The Group ID will be compared with the **General Settings** on the device(s) when connecting to your PC.  
When a match is found, the address information will be registered to the device(s).  
**- General Setting (Key Operator Mode)**  
Set the Parameter No. 36 "Address Book Group ID" number (1-99) to match the Group ID programmed in the Scanner Configuration.
- Note:**
- For DP-8060/8045/8035, Set the Parameter No. 34 " Address Book Group ID " number (1-99) in the General Setting (Key Operator Mode).
  - For DP-8020P/8020E/8016P, Set the Parameter No. 27 "ABBR GROUP ID" number (1-99) in the General Setting (Key Operator Mode).
11. **Address Renewal Interval**  
Set the time interval for updating the address information to the device(s).

## Panasonic Communications Utility

Right-click on **Panasonic Communications Utility** icon, and select **Panasonic Communications Utility**.  
The Panasonic Communications Utility Window appears as shown below.



Set to start when double-clicking the Panasonic Communications Utility Icon.

<b>Scanner Configuration</b>	Open the Scanner Configuration Window.
<b>Fax Recv log (When the Panafax Desktop is installed)</b>	Open the Fax Receive Log Window.
<b>Exit Panasonic Communications Utility</b>	The Panasonic Communications Utility is terminated.
<b>Other</b>	Click the <b>Browse</b> button to set the application program.

## Memo

**USA Only**

## **WARRANTY**

PANASONIC DIGITAL DOCUMENT COMPANY MAKES NO WARRANTIES, GUARANTEES OR REPRESENTATIONS, EXPRESSED OR IMPLIED, TO THE CUSTOMER WITH RESPECT TO THIS PANASONIC MACHINE, INCLUDING BUT NOT LIMITED TO, ANY IMPLIED WARRANTY OF MERCHANTABILITY OR FITNESS FOR A PARTICULAR PURPOSE.

PANASONIC DIGITAL DOCUMENT COMPANY ASSUMES NO RISK AND SHALL NOT BE SUBJECT TO LIABILITY FOR ANY DAMAGE, INCLUDING, BUT NOT LIMITED TO DIRECT, INDIRECT, SPECIAL, INCIDENTAL OR CONSEQUENTIAL DAMAGES OR LOSS OF PROFITS SUSTAINED BY THE CUSTOMER IN CONNECTION WITH THE USE OR APPLICATION OF THIS PANASONIC MACHINE. SEE YOUR DEALER FOR DETAILS OF DEALER'S WARRANTY.

For Service, Call: \_\_\_\_\_

Panasonic Digital Document Company,  
Unit of Panasonic Corporation of North America  
One Panasonic Way  
Secaucus, New Jersey 07094  
<http://panasonic.co.jp/pcc/en/>

Panasonic Canada Inc.  
5770 Ambler Drive  
Mississauga, Ontario L4W 2T3  
<http://www.panasonic.ca>

For Customer Support (Except for  
USA and Canada Users):  
Panasonic Communications Co., Ltd.  
Fukuoka, Japan  
<http://panasonic.net/index.html>

T0806-0(06)  
PJQMC0396YA  
August 2006  
Published in Japan