

Ostia 7.60 Manual

SYSTEM REQUIREMENTS AND TERMS USED IN THE MANUAL

Windows® Mobile-based device - Pharos Traveler GPS devices, Pocket PCs, and Pocket PC Phones.

Windows CE device – Pharos Drive GPS devices

Pocket PC Requirements

Processor Type: StrongArm or XScale

Operating System: Windows CE Version 4.0 or higher

Memory: 5-MB Program (memory cards are suggested for map storage)

Compact Flash card or SD/MMC card memory: 64 MB minimum

Desktop/Laptop Requirements

CPU: Pentium class

Operating System: Windows 98/ME/NT/2000/XP

USB port or Card Reader for data transfers to Windows Mobile-based devices: Microsoft ActiveSync must be installed and connected if transferring data via connection from the device to USB port using MapFinder. ActiveSync does not have to be installed for Pharos Drive GPS devices.

Available hard drive space: 64-MB minimum for map installation.

TABLE OF CONTENTS

	<u>PG</u>
System Requirements and Terms Used	2
Table of Contents	3
Precautions and Notices	6
Introduction to Pharos GPS Software and Hardware	7
1.0 Summary of Features	8
2.0 Getting Started with Ostia and MapFinder	10
2.1 Get Connected, Install Ostia and Open MapFinder	10
2.2 Using the MapFinder Software	11
2.3 Selecting Maps	12
2.4 Extracting and Transferring Maps	14
2.5 Other MapFinder Functions	15
3.0 Ostia Terms and Abbreviations	16
4.0 On-screen Features	17
4.1 Map Screen Buttons	17
4.2 GO Buttons	18
4.3 Power User	19
4.4 View Buttons	21
4.5 Options Buttons	22
4.6 Smart Navigator Buttons	23
4.7 Options Details	24
5.0 General Features of Ostia	26
5.1 Anatomy of the Navigation Screen	26
5.2 Opening and Viewing a Map	27
5.3 Satellite and Compass Information Screens	28
5.4 User Interface Options	29
5.5 Display Options	30
5.6 Zooming (In/Out) Capabilities	33
5.7 Smart Navigator Services	34

6.0	Using Features in Ostia	36
	6.1 Creating a Route	36
	6.2 Adding Multi-Stops to a Route	43
	6.3 Using the Point of Interest Search	44
	6.4 Saving Position as a Favorite, Contact, or Home	48
	6.5 Using Trip Trace	49
	6.6 Exporting Favorites	51
	6.7 Deleting Favorites	51
	6.8 When to use the Highway/Motorway Map	52
7.0	Smart Navigator Services	53
	7.1 Register & Subscribe	53
	7.2 Smart Login	55
	7.3 Using Maps on Demand, POI Finder, and Real-time Traffic	57
	7.4 Using Follow Me	61
8.0	GPS Receiver Setup and Configuration	65
	8.1 GPS Status Indicator/Powering on GPS Receiver	65
	8.2 Configuring GPS in Ostia	66
	8.3 Installing Pharos GPS Hardware	68
9.0	Troubleshooting	72
10.0	Contact Us at Pharos	73
11.0	SOFTWARE LICENSE AGREEMENT	74

!! IMPORTANT !!

Register your Pharos Ostia Software NOW at:

www.pharosgps.com/support

As a Pharos Registered Customer, you are eligible to download updated maps and software and participate in any future programs or services that Pharos may announce. Discounted fees and/or additional charges may apply. Registration is easy and easy, and Pharos never sells or releases user information to any outside entities.

Precautions and Notices

- **Do not** attempt to operate a Pharos GPS system in a vehicle while in motion or in any way that interferes with safe driving.
- **Secure** your device to the vehicle in such a way as to not endanger the driver or passengers while driving or during operation.
- **Do not** place your device in any area of the vehicle where the use of electronic displays is prohibited in motor vehicles.
- GPS signals cannot pass through opaque solid materials. Obstacles, such as tall buildings, tunnels, highways, dense trees, and bad weather can effect signal reception. If window tint contains metallic material, GPS signal may be poor. Cordless phones, radar detectors, satellite radio receivers, and other wireless devices may interfere with GPS reception or result in poor GPS reception quality.
- Navigation maps may contain errors and omissions or may be out-of-date with recent road changes or conditions. **Please be attentive** to roadway signage, all posted roadway information, and the condition of the road itself. Calculated routes are reference only. Users must obey traffic signs and local regulations.
- GPS positioning is intended for use as a reference, not precise measurement of direction, distance, or topography. **Routes in Ostia are recommendations only.**
- Do not leave the product in direct sunlight or heat for extended periods of time. Overheating the battery can be dangerous and/or cause malfunctions.

Pharos software and hardware may not be used for any purpose in which failure could lead to personal injury, physical, or environmental damage.

Introduction to Pharos GPS Software and Hardware

Thank you for choosing **Pharos GPS** products. These award-winning mobility tools will help you travel in a more efficient, organized and informed manner. This introduction should be used as a reference when getting started with our system. While you may not need to use all the steps in the introduction regularly, being familiar with these features will make usage easier.

- Make sure **Microsoft ActiveSync** is installed on your desktop/laptop computer if using Windows Mobile-based devices
- Before **Copying Maps** (Section 2), make sure your Storage Card is in your device or card reader
- Use the **MapFinder** utility to choose and load maps (Section 2)
- Before installing **Ostia** on your Windows Mobile-based devices (Section 2), make sure ActiveSync on your desktop shows *"Connected"*
- Know both your departure location and your destination to determine which maps you need
- To prevent many new-user issues, read the **Owner's Manual** that came with your device

Use this product prudently. The product manufacturer is not liable for any damages or lost profits caused by misuse of the product. Pharos and its suppliers specifically disclaim any warranties, either expressed or implied, for their products' fitness for use in any high-risk activity

1.0 Summary of Features

- NMEA-0183 compliant
- Detailed street level data, with up to 10 maps opened
- Automatically opens the map for your current location when a GPS lock is acquired
- Screen View supports landscape as well as portrait options
- Reference by address, intersection, POI, longitude/latitude or Outlook Contacts
- Routing from one Point of Reference to another, with up to 10 intermittent "Multi-Stops" in a single Route
- Easy to use Points of Interest categories such as Cash, Fuel, Food, Hotel, etc.
- Text directions, Visual driving directions, and Voice guidance
- Tap a street on the map to show street information
- Zoom in and zoom out with stylus
- Favorites stored on Pocket PC independent of Contacts
- GPS status indicator with on-screen strength indicator
- Real-time simulation of Route with GPS Powered Off
- Two views (1 overhead, 1 3D Birds-Eye), with night-view map display option

■ When navigating with the Pharos GPS Receiver you will find:

- Three routing methods: Fastest, Shortest, No Highway/Motorway, Avoid Toll Roads
- Street name of the next turn at the bottom of screen
- Displays the distance and direction of the next turn and distance to final Destination
- Screen display options: Map, Split Map with Arrow, and Arrow
- Audible Voice-prompt Route guidance
- Auto zoom-in and out before and after change in trajectory
- GPS Receiver position is always Point of Origin, when GPS is enabled
- An Auto Re-Route option and one-touch Re-Route button
- Moving map while navigating with the GPS Receiver
- Selectable “North Up” or “Heading Up” for map display

■ Smart Navigator Services

- 4 internet-based services with subscription
- Real-time Traffic shows traffic speed and/or incident data based on your city
- Maps on Demand lets you load a map over the internet without using a CD
- POI Finder provides Points of Interest such as businesses, fire departments, WiFi Hotspots, Fedex-Kinkos, and more
- Follow Me allows you to see where other Members of your group are on the road, or for a Member to view a driver on the road
- Access each of these services wirelessly using built-in WiFi, GPRS, or other data connection at any WiFi hotspot

2.0 Getting Started with Ostia and MapFinder

2.1 Get Connected, Install Ostia and Open MapFinder

Step 1: Make sure your device is connected to your PC through Microsoft ActiveSync.

Note: Applies only for Windows Mobile-based devices

Step 2: Insert the Ostia CD into the CD-ROM drive, and the Pharos Setup Screen will appear

Note: Only applies if Auto-run is enabled on your PC. If not, you will need to open My Computer and double-click on the CDROM Drive to open the Pharos Setup Screen.



Microsoft ActiveSync



Step 3: Select “Ostia” to install Ostia to your device, and follow the installation instructions on your screen.

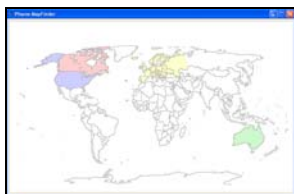
Note: Ostia is pre-installed on some Pharos’ devices

Note: After Ostia has been successfully installed on your device, please perform a Soft Reset on your device. This will ensure that the Ostia shortcut will appear on the Today screen

Step 4: To begin transferring maps from the CD to your device, select MapFinder from the Pharos Setup Screen

Note: To activate Ostia on your Windows Mobile-based device, enter the registration code that is located on the inside flap of the cardboard CD holder. This does not apply for Smartphones.

2.2 Using the MapFinder Software



The World MapFinder will open. Select the region of the world where your maps are located by clicking on the colored area of the map.

Note: You will need to have the map CDs on-hand to use Pharos MapFinder.

MapFinder helps you determine which maps you need. Simply select the maps you wish to use and copy them to your PC, Pocket PC, Pharos navigation device, Smartphone, or Storage Card. You can also browse features and data within your maps.



USA



Canada

If using European maps, select the country that covers your area by clicking on the map. The appropriate MapFinder for that country will appear.



Europe



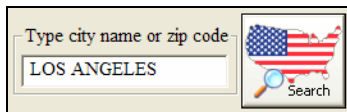
UK

2.3 Selecting maps

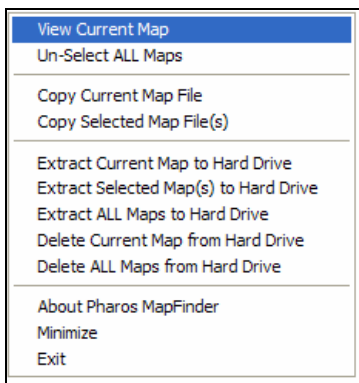
There are two methods used to select a map(s) you want to use:

1. Using the Search Field

Enter a **city name** or **zip/postcode** and click “Search”.



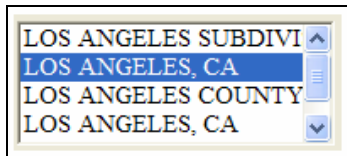
Note: A zip/postcode is the most precise way to search. Areas on the edge of maps may need more than one map to travel efficiently.



To view a map on the PC, right mouse click on the desired map, and select “View Current Map”.

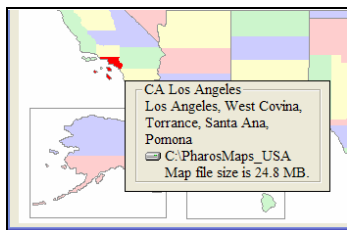
This allows searching for Addresses, Points of Interest (i.e. Airports, City Centers, etc.), and other features.

After searching, a list matching your criteria will appear in the results field. Double-click the city name you wish to select. The map selection will become highlighted below. Repeat for additional map selection.



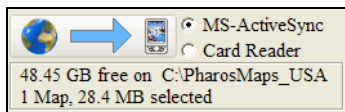
2. Directly Selecting Maps

Place the mouse cursor over the map to be selected; the information for that map will be displayed (as seen to the right).



Double-click on the map to select it. (Repeat for additional map selection.)

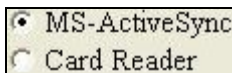
MapFinder displays how many maps you have selected, how much free space is available on your hard drive, and how much storage is required to transfer this map to your Device in the upper right corner of the window.



2.4 Extracting and Transferring Maps

After maps are selected, they need to be extracted and sent to the “My Documents” folder on the Storage Card or the main memory of Pocket PC or handheld device.

After selecting maps, the upper right corner of the screen displays two options:



- **MS ActiveSync**

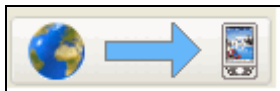
Transfer maps directly to Pocket PC or memory card via ActiveSync

Note: Applies only if using Windows Mobile-based device

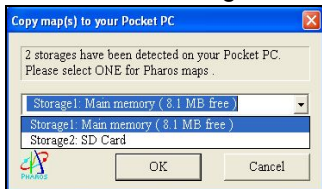
- **Card Reader**

Transfer maps directly to a memory card in a card reader. Make sure you know to which drive letter your card reader is assigned.

1. Choose appropriate option, and click “Execute Map Copy.”



2. Select location to store maps. Click the drop-down menu arrow to scroll through additional options in list:



- For the Windows Mobile-based device: choose either Main Memory or Storage Card
- If using a Card Reader, it will ask which drive letter to use

3. Select the appropriate location and click OK to continue. Continue to click OK on the next windows. The last screen will display the progress of the transfer. **Note:** If transfer does not begin right away, move the mouse to prevent the program from idling.

2.5 Other MapFinder Functions

Right-click on a map and the following menu will appear:

MapFinder Menu Functions

View Current Map
Un-Select ALL Maps
Copy highway map
Copy Current Map to Pocket PC
Copy Selected Map to Pocket PC
Extract Current Map to Hard Drive
Extract Selected Map to Hard Drive
Extract ALL Maps to Hard Drive
Delete Current Map from Hard Drive
Delete ALL Maps from Hard Drive
Pharos MapFinder Help
About Pharos MapFinder
Minimize
Exit

View Current Map – opens a map to be viewed on the PC

Un-Select ALL Maps – clears all map selections

Copy highway map – copy selected Country Hwy/Motorway Map to device

Note: This selection is not available for all MapFinders. It will only appear in the list if you right-click over white space

Copy Current Map(s) – map(s) currently selected will be copied to the device

Copy Selected Map – downloads maps already on your hard drive to your device

Extracting Maps to the Hard Drive – extracts maps directly to your hard drive only

Deleting Maps – deletes maps from your hard drive only

About Pharos MapFinder – displays program information

Minimize – minimizes MapFinder

Exit – exits MapFinder completely

Note: MapFinder will only function if the correct map CD is already inserted into the CD drive on your PC.

3.0 Ostia Terms and Abbreviations

Action Button

Pressing the center of the Directional Pad located on the Windows Mobile-based device allows you to automatically recalculate a Route from your current location once you have driven off-Route.

Waypoints

Saved locations stored on your device as Favorites for use as Point of References (POR).

Intersection

Intersection of roadways. An intersection can be set as a POR.

MapFinder

Utility used to automate the transferring of maps to your device.

Microsoft ActiveSync

Developed by Microsoft. Use with a Windows Mobile-based device and your desktop computer to install/manage maps. This software can be downloaded from: www.microsoft.com/windowsmobile

Multi-Stop

Add up to 10 stops to a route between Origin & Destination.

Point of Interest (POI)

Common points of interest, which can be used as "PORs", are listed in the following categories: Cash, Fuel, Food, and Hotel. City Centers, Shopping Centers, Airports, and other public landmarks are also available.

Point of Reference (POR)

Any item used to define a specific point or coordinate used in navigation (e.g. Origin, Destination, Point of Interest (POI), Intersection, Address, etc.). A POR may also be set by double-tapping on the map.

4.0 On-screen Features

4.1 Map Screen Buttons



GO — Brings up on-screen Buttons that allow you to search for a POR, change map view, see GPS info, access Smart Navigator services, manage Favorites, and view Options.

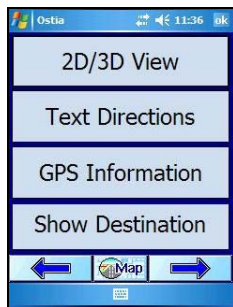
GPS — Enables you to turn the GPS on/off, initialize/reset the GPS, and indicates the current status of the GPS receiver.



Map Screen



GO Screen



View Screen





Options Screen



**Smart Navigator
Screen**

4.2 GO Buttons

A rectangular button with a light blue background and a dark blue border. The word "Address" is centered in a dark blue, sans-serif font.A rectangular button with a light blue background and a dark blue border. The words "Point of Interest" are centered in a dark blue, sans-serif font.A rectangular button with a light blue background and a dark blue border. The word "Waypoint" is centered in a dark blue, sans-serif font.A rectangular button with a light blue background and a dark blue border. The word "Home" is centered in a dark blue, sans-serif font.A rectangular button with a light blue background and a dark blue border. The words "Power User" are centered in a dark blue, sans-serif font.

Address – Enter specific address as a Destination.

POI – Search for specific POI's near your current location (or the center of the screen) within a given set of parameters.

Waypoint – Accesses pre-designated Favorites, Recent Destinations, and Pocket Outlook Contacts database to set a Destination.

Home – Routes user to the Favorite pre-designated as Home.

Power User – Gives user access to additional Ostia features such as setting an Origin or Opening a Map. See **Section 4.3 Power User** for a list of specific functions within this option.

Map – Returns user to the map screen. This applies to all screens in which this button appears.

Forward Arrow – Moves user forward to the next Screen. This applies to all screens in which this button appears.

4.3 Power User

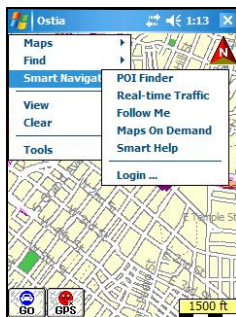


Maps – Open maps, List Active Maps, Close Maps and Delete Maps. Provides software and map version information, and exits Ostia.



Find – Search for a POR, view Recent Destinations, make a New Route, and make a Reverse Route.

Note: New Route and Reverse Route are only available if an Origin and Destination have been selected.



Smart Navigator – Accesses Smart Navigator Services. For more information see **Section 4.6 Smart Navigator**. Requires Internet access and paid subscription from Pharos:

www.PharosGPS.com/SmartNavigator

Note: Applies only if using Windows Mobile-based devices.



View – View Text Directions, GPS Info, POR, Full Route, Real-time Traffic, Places Found from POI Finder, a saved Trip Trace, and Favorites.

Note: Some features are only available if they have been activated on the map, such as Real-time Traffic and POIs Found, or have been previously saved such as Trip Trace and Favorites.



Clear – Clear features that have been added to the map such as Real-time Traffic, Places Found, a Route, Multi-stops, Trip Trace, and Favorites.



Tools – Allows user to Simulate a route, Turn GPS receiver On/Off, Record a Trip Trace, Save a Waypoint, Delete Favorites, Export Favorites as a text file, or view Options. For more info on Options, see **Section 4.7 Options Details**.

4.4 View Buttons

2D/3D View

2D/3D View – Change map view from Overhead to Bird's Eye View.

Text Directions

Text Directions – View the complete text directions of a pre-determined route.

GPS Information

GPS Info – View Satellite strength and Compass info such as Latitude/Longitude, time, altitude, etc. **Note:** Altitude is based on Height Above Ellipsoid, not Height Above Sea Level.

Show Destination

Show Destination – View the currently selected Destination on the map.




Back Arrow – Moves user back to the previous Screen. This applies to all screens in which this button appears.


4.5 Options Buttons

A rectangular button with a light blue background and a dark blue border. The text "Save a Waypoint" is centered in black.

Save a Waypoint

A rectangular button with a light blue background and a dark blue border. The text "Delete Favorites" is centered in black.

Delete Favorites

A rectangular button with a light blue background and a dark blue border. The text "Clear Route" is centered in black.

Clear Route

A rectangular button with a light blue background and a dark blue border. The text "Options..." is centered in black.

Options...

Save a Waypoint — Allows the user to save the GPS Location/Map Center, Current Destination, Current Origin, or a Lat/Lon as a Favorite, as Home, or to Outlook Contacts.

Delete Favorites — Delete a Favorite from the list of saved Waypoints.

Clear Route — Clears the route from the map screen, including the Origin, Destination, and Multi-Stops.

Options — Allows for Customization of Ostia. For details on features inside Options, see **Section 4.7 Options Details**.

4.6 Smart Navigator Buttons

Note: Applies only if using Windows Mobile-based device

Real-time Traffic

Real-time Traffic – Allows access to real-time traffic data. (subscription required). Check our website for availability.

Maps On Demand

Maps on Demand – Capability to download maps to your device via the Internet to your Pocket PC (Free service to Registered Users). **Note:** POI database files are not included in Smart Maps download.

POI Finder

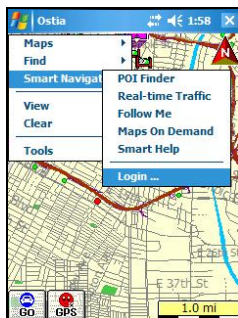
POI Finder – Allows access to a large active POI database (subscription required).

Follow Me

Follow Me – Allows you to see exact locations of any member/subscriber within your “network” account, or for any member to see you (subscription required).



Smart Help – Lists detailed information about Pharos' Smart Navigator Services.



Login – Enter registered email address and password to gain access to the Smart Navigator Services, while connected to the Internet.

4.7 Options Details

Auto/Manual Re-route

Enabling the Auto Re-route option will have the software automatically calculate a new route if the GPS indicator goes off the calculated route. Manual Re-route requires the user to press the action button to Re-route.

North Up/Smart Heading Up

Enabling the North Up option will orient the screen to have North always at the top of the screen. Smart Heading Up option will set the display to always show the GPS indicator pointing towards the top of the screen with a compass in the upper right corner of the screen.

Voice Guidance

This will allow either the Default (USA English using miles) or an Alternative voice prompt (UK English using kilometers) to be used for navigation, or to turn Off the Voice Guidance.

Route Options

This option sets the method on how the software will calculate a route:

- **Fastest:** This will calculate the fastest route based on posted speed limits
- **Shortest:** This will calculate the most direct route
- **No Hwy:** This will calculate a route avoiding highways/motorways completely (Can not be used when actually on a highway/motorway, or when using a Highway map to route between two maps that are not touching)
- **Avoid Toll Roads:** This will calculate a route avoiding marked toll roads completely. Only applies to officially designated toll roads

Daylight/Night View

Enabling Daylight View will use lighter colors on your screen. Night View will display darker colors on the map, making it less bright (and less distracting to the driver) than Daylight View.

Smart Server

This will change server access between sites A and B. This may be necessary if experiencing slow downloading time for Smart Navigator services such as POI Finder and Real-time Traffic.

Note: Applies only if using Windows Mobile-based device.

Tracking Interval

This will allow the user to change the Follow Me and Trip Trace Interval times between 10 sec, 30 sec, 1 min, 5 min, and 20 min.

Note: Applies only if using Windows Mobile-based device.

Follow Me ID

This will allow the user to enter your Follow Me Vehicle ID. (subscription required)

Note: Applies only if using Windows Mobile-based device.

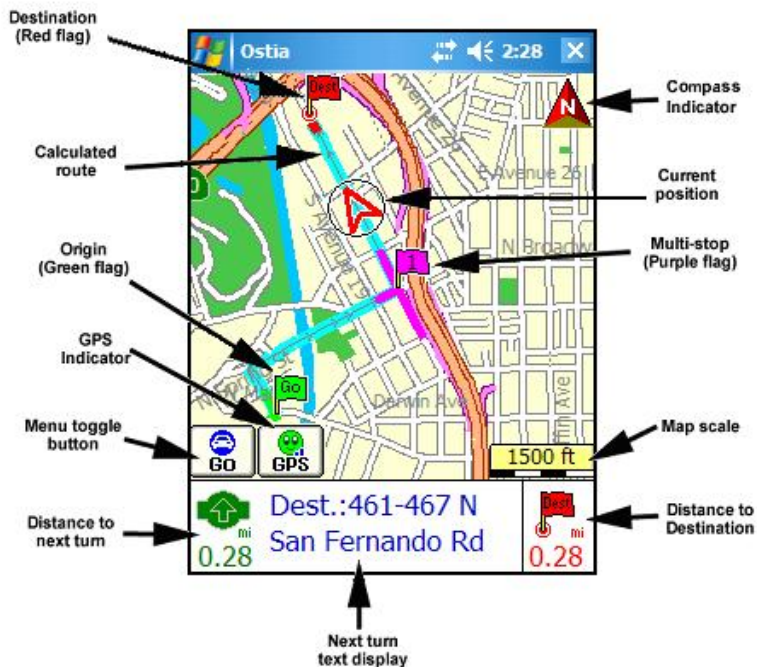
Smart Navigator User ID

This will allow the user to change the email address and password for access to the Smart Navigator Services. (subscription required)

Note: Applies only if using Windows Mobile-based device.

5.0 General Features of Ostia

5.1 Anatomy of the Navigation Screen



5.2 Opening and Viewing a Map

Opening Map Automatically

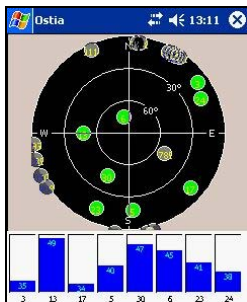
Maps will automatically open when a GPS lock is acquired, provided that the maps are already saved on the storage card or main memory of the Device.

Opening Map Manually

To open maps, tap GO → Power User → Maps → Open, and select desired map from the list of available maps. Tap the Forward Arrow when finished. Repeat to open multiple maps. The maximum number of maps that can be opened at one time is 10.

Note: Last map opened when Ostia was turned off will be the first map opened when Ostia is turned back on, and previous PORs are cleared when new maps are opened.

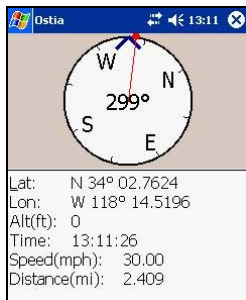
5.3 Satellite and Compass Information Screens



This screen displays **Satellite Information**. Typically, a nominal value of 40 or higher on at least 3 bars is normal for a GPS Lock. The bars will be gray when searching for a signal and blue when a lock is acquired. The satellites are the gray circles in the black target, which will turn green when you have a Lock.

The **Compass** indicates the following information when moving at 5mph or faster:

- General direction of travel
- The red line represents the general direction to your selected Destination.
- Approximate:
 - Latitude
 - Longitude
 - Altitude (based on **HAE** – Height Above Ellipsoid)
 - Global Time
 - Speed
 - Line-of-Site Distance to Destination from current location

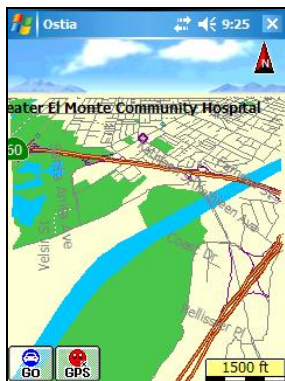


5.4 User Interface Options

With a Windows Mobile-based device running **Windows Mobile 2003 Second Edition, Version 4.21** or later, you have the option to view the screen in Landscape mode or Portrait mode, as seen below:



Landscape



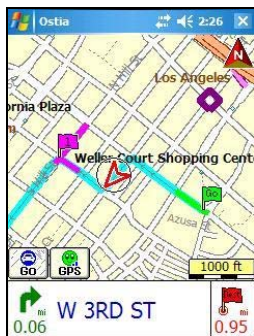
Portrait

Note: To change the view of your device, follow these instructions:
Tap on the Start Menu → Settings → System → Screen, and select the desired Orientation.

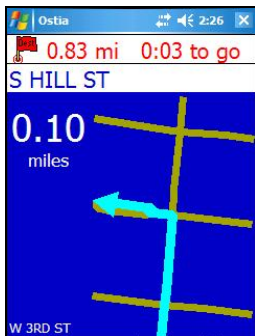
5.5 Display Options

Navigation Screen Options

Tapping the text directions will cycle through the three (3) navigation screens that can be used while driving, as shown below, as well as repeat the audible Voice Guidance. Refer to **Section 4.7 Options Details**:



Standard Map View



Simplified Arrow View



Split Map & Arrow View



Night View

Uses optimal color scheme for night use.

You can set this view by checking "Night View" on your Options screen, by tapping GO → Power User → Tools → Options → select either Daylight View or Night View, and Forward Arrow to cycle through the options. Select Map when finished.



Map Scale

Tapping on yellow “scale” box will convert all units from Kilometers to Miles, and vice versa, including all distance information related to Route calculation.



2D/3D View

Tapping on the Screen where the Sky appears (in the horizon), will change the 3D Bird's Eye View to 2D Overhead View.



2D Overhead View



3D Bird View

Moving the Map Manually

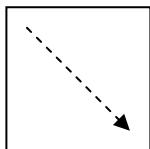
There are 3 ways to move the maps manually so that other sections of the map can be viewed:

- 1) **Without a GPS Lock**, press the Directional Pad on your device in the direction you wish to view, and the map will move accordingly.
- 2) **Without a GPS Lock**, Using the stylus, tap and hold on the screen, dots will circle around the tip of the stylus. Without letting go, drag the stylus in the direction you wish to view, and the map will move accordingly.
Note: Applies only if using Windows Mobile-based devices or Pharos Drive GPS
- 3) **With a GPS Lock**, press the Directional Pad in the direction you wish to view and the circled cross icon will appear (**pictured to the right**), and the map will move accordingly. If you wish to resume back to the view displaying your current position on the map, select the "Cancel" button with red "X", at the lower left-hand side of the screen.



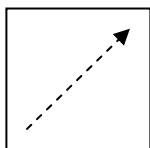
5.6 Zooming (In/Out) Capabilities

Note: Applies only if using Windows Mobile-based devices.



Zoom In

Drag the stylus or your finger on the screen in a motion from the upper left corner towards the bottom right corner (creating a box on the screen). The software will attempt to do a best-fit zoom to the area within the box.



Zoom Out

Zooming out is the opposite direction, bottom left corner to the upper right corner.

5.7 Smart Navigator Services

Note: Applies only if using Windows Mobile-based devices

Smart Navigator

A web-based suite of location-based services, including Maps on Demand, POI Finder, Follow Me and Real-time Traffic. With these Smart Navigator services, users can download maps on the go, receive traffic information, find points-of-interest, and view geographic locations of other users, all delivered via internet connection directly to their mobile device. Smart Navigator integrates these web-based information services with Pharos' navigation and routing software for Windows Mobile-based Pocket PCs, to give users the ultimate mobility tool for information anywhere. For more information or to subscribe to any of the Smart Navigator services, visit www.pharosgps.com. Each of the Smart Navigator services is described below. Refer to **Section 7.0 Smart Navigator Services** to learn how to use these services.

Real-time Traffic

Real-time Traffic lets you view live traffic flow and events via internet connection, allowing you to better react to traffic conditions. Simply connect to the Internet via ActiveSync from your desktop PC, WiFi, wireless modem or Pocket PC phone.

Check our website for availability in your city.

POI Finder

POI Finder helps you find location information and directions to a location using your Pocket PC and an internet connection. Look up restaurants, banks, hotels and other businesses, specifying location by proximity to a destination or to your current location. Refer to **Section 7.0 Smart Navigator Services** to learn how to use this service.

Maps on Demand

Get the map you need downloaded directly to your mobile device when you have an internet connection. Maps on Demand is a service that delivers the map you need directly to your Pocket PC, when you have an internet connection. Refer to **Section 7.0 Smart Navigator Services** to learn how to use this service.

Note: Typical download time varies depending on file size and connection speed (2-3 minutes for broadband internet connection, or 15-30 minutes for wireless connection using GPRS).

Follow Me

Follow Me allows you to see the exact location of Members of your Follow Me Group, and allows other Members to see your location. Refer to **Section 7.4 Using Follow Me** to learn how to use this service.

6.0 Using Features in Ostia

6.1 Creating a Route

Note: GPS needs to be enabled in Ostia before navigation can begin. Refer to **Section 8.0 GPS Receiver Setup and Configuration**.

To create a Route, you need to have both an **Origin** and a **Destination** selected. These PORs (Points of Reference) are defined below:

- The **Origin** is your starting point. If the GPS has a lock (Green Smiley Face), and the GPS position indicator (red arrow) is displayed on a paved road, the center of the screen will represent your Route Origin.

If you do not have a GPS lock, you can search for your Origin by using any of the following methods from **Go → Power User → Find**: Outlook Contacts, Favorites, Address, Intersection, or Point of Interest.

You can also select any location on the map as the Origin by double-tapping the screen.

- The **Destination** is your ending point. You can search for your Destination by using any of the following methods from the **GO screen**: Address, Point of Interest, Waypoint, or Home (Home is a pre-designated location and cannot be selected unless a location has been previously saved as Home).

Again, you can also use any location on the map as the Destination, just by double-tapping the screen.

Note: For information regarding Multi-Stop Routing, refer to **Section 6.2 Adding Multi-Stops to a Route**.

Note: If you do not have a GPS lock, we suggest that you locate the Origin first, and then the Destination. If Ostia does not automatically create the Route after the Origin and Destination are set, you can manually create it, by tapping **GO → Power User → Find → New Route**.

The features inside of the GO screen can only be set as a Destination. To set a location as an Origin, refer to **Section 6.1 Creating a Route → Origin**. To set a Destination using the GO screen features, do the following:

1. Hit **GO →** and choose between Address, Point of Interest, Waypoint, or Home. Each of these options is described in detail below.

Note: For information regarding Multi-Stop Routing, refer to **Section 6.2 Adding Multi-Stops to a Route**.

Address

This option allows you to search for a location by a specific address that can be used as the Destination in a Route. Make sure that all necessary maps are already opened.

From the Map screen, tap **GO → Address, and follow the steps below to perform an Address search:**

Country - USA

Choose between the USA or Canada.

State/Province

Choose the State/Province in which to look. This will progress you to the City Name, House Number, and Street Name to find the location.

Zip/Postal code

Choose the Zip/Postal Code in which to look. This will progress you to enter the House Number, and Street Name, then give a list of possible cities that match that zip/postal code.

Street Name

If the map containing the location is already opened, this option will search by first the House Number, then the Street Name, and give a list of possible cities in which that street is located.

To Enter a House Number and Street Name

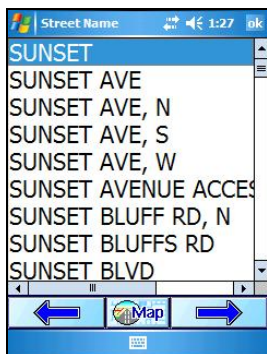
1. Regardless of which entry option you chose, when you arrive at the House Number screen, enter the House Number you're looking for and tap the Forward Arrow.

Note: You can use the “Del” (Delete) button to backspace and correct or change your entry.

2.a Enter the street name in the field provided. As you type each letter, only the next available letters matching the street search results will appear on the keyboard.



2.b This will provide a list of the most closely matching streets available, appearing on the next screen. Select the desired street name, and tap the Forward Arrow.



Note: Avoid entering “N”, “E”, “S”, and “W” at the beginning of the street name. In Ostia’s database, such directions usually come after the street name, such as Main St, N. If the desired street name does not appear, verify that the correct map is open. Refer to **Section 5.2 Opening and Viewing a Map**.

3. Next, select the city. Based on which street you chose, Ostia will show a list of cities in which that street is found. Select the desired city from the list, and tap the Forward Arrow.

4. If accessing the Address from the Go Button, the location can only be saved as a Destination. If accessing the Address from Power User, you have the option to select this location as an Origin, Destination, or a Multi-Stop. Highlight your selection, and tap the Forward Arrow.

Note: If you would like to Save this location, refer to **Section 6.4 Saving Position as a Favorite, Contact, or Home**.

Point of Interest

This option allows you to search for Points of Interest, such as Cash, Food, Fuel, Hotels, or other Public Landmarks, that can be used as the Destination in a Route.

From the Map screen, tap GO → Point of Interest, and refer to Section 6.3 Using the Point of Interest Search.

Waypoint

This option will bring up a list of previously stored Waypoints to select from that can be used as the Destination. Make sure that all necessary maps are already opened.

From the Map screen, tap GO → Waypoint, then select from Favorites, Recent Destinations, or Outlook Contacts.

Home

Once you have saved a location to be designated as your “Home”, you can select this option to have a Route created from your current location, to your Home. Make sure that all necessary maps (from your current location to your home) are already opened.

From the Map screen, tap GO → Home.

Note: Home can only be set as a Destination. If it needs to be set as the Origin, the address will need to be re-entered and saved as an Origin.

Outlook® Contacts

This option allows you to search for a location utilizing the Pocket Outlook Contacts database. A Contact can be used as the Destination, Multi-Stop, or Origin in a Route. Make sure that all necessary maps are already opened.

From the Map screen, tap GO → Power User → Find → Outlook Contacts, select the location from the list of Contacts, then tap the Forward Arrow.

Note: Contacts only applies if using Windows Mobile-Based Pocket PC or Pocket PC Phone.

Intersection

This option allows you to search for a specific Intersection that can be used as the Destination, Multi-Stop, or Origin in a Route.

From the Map screen, tap GO → Power User → Find → Intersection, and follow the steps below to perform an Intersection search:

1. Enter the street name in the field provided. As you type each letter, only the next available letters matching the street search will appear usable on the keyboard. This will provide a list of the most closely matching streets available, which will appear in the next screen. Select the desired street name, and tap the Forward Arrow (visual example of Street Name entry on keyboard is available on **page 38**).

Note: Avoid entering “N”, “E”, “S”, and “W” at the beginning of the street name. In Ostia’s database, such directions usually come after the street name, such as Main St, N. If the desired street name does not appear, verify that the correct map is open. Refer to **Section 5.2 Opening and Viewing a Map**.

2. Next, select the city from the list. Tap on the city name and hit the Forward Arrow. Make sure the city selected is the city in which the two streets intersect.

3. Based on the city chosen, a list of streets intersecting the Street you entered will appear. Tap on the desired Street and hit the Forward Arrow.

Note: If desired Street not available, reverse the order in which you enter the intersecting streets.

4. You have the option to select this location as an Origin, Destination, or a Multi-Stop. Highlight your selection, and tap OK.

Note: If you would like to Save this location, refer to **Section 6.4 Saving Position as a Favorite, Contact, or Home**

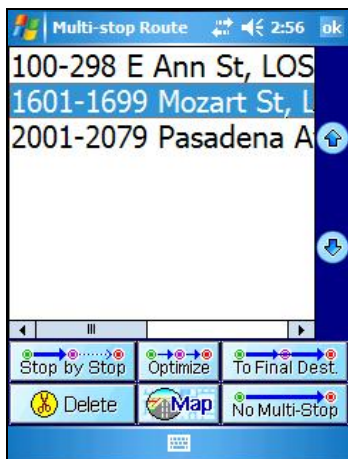


The Route will be displayed on the screen, zoomed in on the Destination. The on-screen text directions display at the bottom (if in Simulation Mode or if GPS lock is acquired). **To view the whole route, hit Go → Power User → View → Full Route.** Origin displays as a Green Flag, Destination as a Red Flag, and Multi-Stop(s) as Purple numbered Flags.

You are now ready to navigate.

6.2 Adding Multi-Stops to a Route

When creating a Multi-Stop Route, you can enter up to 10 stops between the Origin and Destination. The Origin and Destination are not considered as Multi-stops.



Selecting a Multi-Stop Route

Once all Stops are set (limit up to 10 between Origin and Destination) plus the Origin and Destination locations, tap **GO** → **Power User** → **Find** → **New Route** to calculate the Route.

This screen will allow you to change the order of the stops, to Optimize the order of the stops based on your routing options, to create a route Stop-By-Stop, to create a route connecting all the Multi-stops to the Destination, or to not use the Multi-stops in the route. You also have the option here to delete any of the Multi-stops in the list.

Viewing a Multi-Stop

To View the Multi-stops, tap **Go** → **Power User** → **View** → **Multi-stop**. This will show the Multi-stops in order according to the order in which they were entered.

Clearing all Multi-Stops

If you want to Clear all Multi-Stops in the Route, tap **GO** → **Power User** → **Clear** → **Multi-Stop**. You will need to recalculate the Route after this if needed. To do this, tap on **GO** → **Power User** → **Find** → **New Route**

6.3 Using the Point of Interest Search

The Point of Interest option allows you to search for Points of Interest around a specific location, based on the area surrounding the center of the screen (or the red arrow when you have a GPS Lock) and when a map is opened.

Tap **GO → Point of Interest →** and select one of the following POI categories: Cash, Food, Fuel, or Hotel. Select the Forward Arrow for a list of additional Points of Interest, such as Public Landmarks, Airports, City Centers, and Museums, etc.

Option A: If you have a GPS Lock, with or without a Route created, the center of the screen will represent your current location. Using the POI button at this time will provide you with a list of POI categories to choose from, based on your current location only.

(Proceed to **Step 1: page 45** to continue POI Search)

Option B: If you do not have a GPS Lock, but a Route is created, you can search for POIs based on a POR (for example your Origin, Destination, or one of your pre-selected Multi-Stops).

- B1. To make sure that the POR is visible in the center of the screen, tap **GO → Power User → View**, and select your POR (Origin, Destination, or Multi-stop), bringing this location to the center of the screen.

(Proceed to **Step 1: page 45** to continue POI Search)

Option C: If you do not have a GPS Lock or a Route created, but wish to search for a POI in an area other than the center of the screen such as a specific city or a public landmark, you will need to make this location the center of the screen. For this example, we will search for a POI in a specific City:

- C1. You will need to locate the City first. To do this, make sure that the desired map is installed and open on Pocket PC, then tap **GO → Point of Interest → Forward Arrow → City Center**, and tap the Forward Arrow again
 - C2. Type the first letter of the name of the City you are searching for, and a list of cities will become available. Select the appropriate City, and tap the Forward Arrow
 - C3. Select this POI as the Origin, Destination, or Multi-Stop in the Route, then tap the Forward Arrow.
- Note:** If accessing Points of Interest through the Go Button, it will automatically set the POI as a Destination. To set the POI as an Origin or Multi-stop, hit **GO → Power User → Find → Point of Interest**.
- C4. This will bring the location to the center of the screen. If an Origin was previously selected, and you chose this POI as a Destination, it will automatically make the route and zoom in on the Destination in the center of the screen.

(Proceed to **Step 1: page 45** to continue POI Search)

Step 1:

Tap GO → Point of Interest → select the POI from the following POI category list: Cash, Food, Fuel, or Hotel



Step 2: For this example, we are going to search for Food around the selected Destination.

Step 3: To narrow the search results, you can type in a keyword or the name of the location, and tap the Forward Arrow. If you leave the field blank, it will bring up the maximum number of results within the pre-designated radius.

The results will list each available POI, including distance from the center of the screen (your current location, or POR), and the name of the POI.

Step 4: By tapping on one of the POIs from the list and selecting the Forward Arrow, the full details for that POI are displayed along with the options to Route to that POI, to set that POI as a Multi-stop, to Call the POI (only on Pocket PC Phones), or to Cancel.

After choosing one of the above options, you will return to the map screen and display all the POIs from the list. Icons differ between categories. For example, a knife and fork for Food, and a bed for Hotel.



The icons **above** represent the POIs for Food, Cash, Fuel, and Hotel. All other POIs will only display one result, unless the category was found using the optional paid subscription service, POI Finder. Refer to **Section 7.0 Smart Navigator Services**.

Showing POI icons

To bring up previously found POI icons on the screen, tap **GO → Power User → View → Places Found** to display a list of all POIs. Those that have been searched for will have a white box in which to place a check mark to view the results for that category on the map screen; if a category has never been searched for before, it has no past record and will show a gray box that cannot be checked.

POI Information

To retrieve the specific information for any given POI (to Route to, Call, or Set as a Stop), tap and hold on any of the POI icons on the screen (**as seen below**).



6.4 Saving Position as a Favorite, Contact, or Home

Save Selected Position as Favorite

1. Tap GO → Forward Arrow (twice) → Save a Waypoint
→ select which location to save from the list of
GPS/Map Center, Current Destination, Current Origin,
or Lat/Lon
2. → Choose Save as Favorite. Enter Favorite Name,
and tap on the Forward Arrow

Save Selected Position as Home

1. Repeat Step 1 above
2. → Choose Save as Home. This will now be the
location the software will route to when choosing GO
→ Home

Save Selected Position to Outlook Contacts

1. Repeat Step 1 above
2. → Choose Save to Contact
3. Enter Contact Name, and tap on the Forward Arrow
4. Contacts screen will appear. Tap Ok in the upper right
corner

Note: Contacts only applies if using Windows Mobile-based devices

6.5 Using Trip Trace

Recording a Trip

To begin Recording a Trip, make sure you have a GPS Lock (Green Smiley Face), with a map opened. **Tap GO → Power User → Tools → Record Trip Trace.** Enter a name for this specific Trip, and tap the Forward Arrow when finished.

Note: To Record a Trip, you must have a GPS Lock, with or without a Route created. Alternately, you can have the GPS turned Off (Red Smiley Face) with a route selected, and choose to run a Simulation from **GO → Power User → Tools → Simulation**

Setting Trip Interval

To set the amount of time between each marker, tap **GO → Forward Arrow (twice) → Options → Tracking Interval → Change.** You have the option to select the amount of time between each marker to be 10 sec, 30 sec, 1 min, 5 min, or 20 min. Once you have chosen the desired time, tap on the Map Button to return to the map screen. Refer to **Section 4.7 Options Details**

Note: Applies only if using Windows Mobile-based devices

Viewing a Trip Trace

To view or use a pre-recorded Trip Trace, tap **GO → Power User → View → Trip Trace**



A list of pre-recorded Trip Trace Files will be displayed. Select the Trip Trace of your choice, tap the Forward Arrow when finished

Your Trip Trace will be displayed with blue diamonds, representing the markers (or bread crumb trail) recorded for you to follow.

Note: When Viewing a previously Recorded Trip Trace, it **will not** provide an actual Route, text directions, or voice prompts. It will only provide markers (bread crumb trail) to follow.

Clearing a Trip Trace

To clear the markers from your Trip Trace, tap **GO → Power User → Clear → Trip Trace**

6.6 Exporting Favorites

To export your Favorites into a text file (*.txt), tap **GO → Power User → Tools → Export Favorites**. Provide a Name for this file, which will contain all the currently stored Favorites (NOT the Contacts). This file will be stored in the My Documents folder on the Main Memory of the Device

To view the exported file on the Device, go to Start → Programs → File Explorer → My Documents → and select the .txt file that contains the name you provided in the previous step

The text file contains the following information for each Favorite: Name of Favorite, Latitude, Longitude

6.7 Deleting Favorites

To Delete Favorites, tap **GO → Forward Arrow (twice) → Delete Favorites**, then pick from the list which Favorite to be deleted, and tap on the Forward Arrow. Tap Yes on the next screen to confirm Delete, or No to Cancel

6.8 When to use the Highway/Motorway Map

The Highway/Motorway map is to be used in conjunction with the standard street-level maps to assist in routing from one map to another, so that the fewest maps are opened at once. This single Highway map contains only the Highways/Motorways for the specified Country, but no street-level information.

If the Highway/Motorway map is loaded to the mobile device or Storage Card, Ostia will automatically open it when required. In addition, Ostia will also open the map for the Destination if it is not already opened.

When Ostia automatically opens the Highway/Motorway and the Destination maps, it will clear out any POR previously set on the map. After Ostia opens the Highway/Motorway and the Destination maps, the Origin will have to be re-entered manually unless you have a GPS Lock.

Note: If the Route calculation method for “No Highway/Motorways” is used, and you are on a Highway/Motorway, it will not be able to calculate the Route until you are no longer on the Highway/Motorway

The **Canadian Highway/Motorway Map** contains highway/motorway information for all metropolitan areas, but some additional areas are not covered by this map. If you are unable to create a route using the Highway/Motorway map, please make sure you manually open all the local maps needed for the route in order to make the calculation.

7.0 Smart Navigator Services

Note: Applies only if using Windows Mobile-based devices

7.1 Register & Subscribe

All users who register on the Pharos GPS website with Ostia version 7.5 or higher receive one month free of all Smart Navigator Services. Otherwise, you must purchase the subscription and Register the Pharos product at the following website:

http://services.PharosGPS.com/shopping/store/registration_form.asp

Step 1: Go to the following website and choose from the list of available subscriptions:

<http://www.pharosgps.com/products/services/smartnavigator.htm>

Note: Real-time Traffic may be referred to as Smart Traffic, and POI Finder may be called Smart Finder, though in both cases there is no difference in the service offered. Follow Me and Get a Map come free with a registration of any Smart Navigator subscription

Step 2: Click “Add to Shopping Basket” at the top of the screen. Make sure the product and quantity of the product you selected is correct and click “To Checkout Click Here”

Step 3: If it is the first time registering, click on the link for New Users, and enter your personal registration info. If you are already registered, simply enter your email and password, confirm your registration info is correct and hit Submit

Step 4: Click Select on the Shipment Type page (No Shipping Necessary or Digital Delivery)

Step 5: This next page shows a summary of your purchase. If all is correct, hit Submit Order and proceed to Step 6; if not, hit Cancel Order

Step 6: Enter the Credit Card number and Expiration Date. The next page confirms your purchase and registration of the product. You will receive an email confirmation of the purchase.

At this point, you may start using the Smart Navigator Service you purchased immediately; you do not need to wait until you receive the confirmation email

7.2 Smart Login

To Enter User ID

Your User ID is the email address you registered with when you bought the subscription. The User ID is NOT case sensitive.



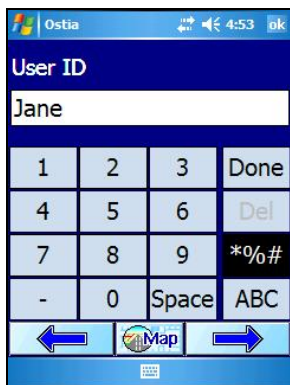
Enter the letters for your User ID. If your email address contains numbers, select the "abc" or "123" button in the bottom right corner to access the numeric keyboard.



To get the @ symbol for the email address, select the “*%#” button on the right side of the window

From the Symbols Menu, you can then choose to go back to numbers, or to the upper case alphabet

Note: After entering the email carrier name (Jane@yahoo), you will have to repeat the steps above to get back to the Symbol Menu in order to input the period (Jane@yahoo.com)



When you are done entering the email address, select the Forward Arrow and enter the password, which IS case sensitive

After entering the password, select the Forward Arrow and you will arrive back at the Map Screen

Provided you have an internet connection on your handheld device, you are now ready to start using the Smart Navigator Services for which you have registered.

7.3 Using Maps on Demand, POI Finder and Real-time Traffic

Maps on Demand

To download a Map (limit 3 maps per day) to your device or Storage Card, follow the steps below after login:

Tap GO → Power User → Smart Navigator → Get a Map

1. Select the Country
2. Choose to search by City Name or Zip/Postal code
3. Enter the City Name or Zip/Postal code for the map you want, depending on which Search format you chose in Step 2
4. Select where to store the map. This window will show all available storage locations as well as the available amount of storage for each
5. The next window will show the possible matches for your Search, as well as the size of each map listed. Tap on the map you want and select the Forward Arrow
6. Loading time for the map depends on the map size and what type of internet connection you are using. Wireless downloads are typically slower than direct connections
7. When the spinning circle in the center of the screen disappears, the download is complete, and the map can now be found in your list of maps

Note: When loading a map in this way, the POIs for Cash, Food, Fuel, and Hotel, will not be included. Only the map itself will be loaded.

POI Finder

To download Points of Interest (in addition to Cash, Food, Fuel, or Hotel) to your device, follow the steps below after using Smart Login:

Tap GO → Power User → Smart Navigator → POI Finder

1. Enter a keyword, or name of POI to narrow the search results or leave blank for a general search, then Tap the Forward Arrow
2. Select a POI category, and tap the Forward Arrow
3. Lists available POIs as well as the distance from the designated POR or center of Map Screen, and their address of each. Refer to **Section 6.3 Using the Point of Interest Search** for additional assistance

Real-time Traffic

To download Traffic information, follow the steps below after Using Smart Login:

Tap GO → Menu → Smart Navigator → Real-time Traffic

1. First make sure you have the correct map open. Select your City (area), and then tap the Forward Arrow.
2. The next window will show the city you chose and display the current time and date. These indicate the time and day for which the traffic info currently being displayed on the map was recorded

Note: You may only view the Traffic info for one city at a time

Depending on the availability in your city, you may see one of the following:



Real-time Traffic and Data

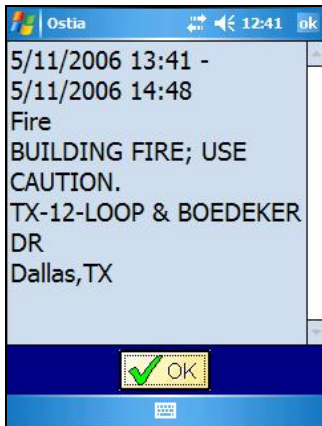


Real-time Incident Data Only

Note: The traffic and data info is based solely on the databases of the Department of Transportation. Some cities do not have Real-time Traffic because the DOT has not built traffic sensors into the highways in that state.

Viewing Incident Data

To view the Real-time Incident Data (yellow triangles), simply tap and hold on a triangle to view the data exactly as the Highway Patrol or other law enforcement entered it into their own computers



7.4 Using Follow Me

Before you can use Follow Me, you must set up your Follow Me Account at the following website:

<http://66.161.28.109/monitoring/login.asp>

Managing Follow Me Accounts

1. Supervisor

- a. Supervisor is the only individual with all rights to adding, editing, and deleting Members. The Supervisor can be located other Members and Observers when logged in to Follow Me

2. Members

- a. Members are allowed to invite Observers (also known as Buddies) and can edit their own account and Buddy List. Members can be located by Supervisor, other Members and Observers when logged in to Follow Me

3. Observers (Buddies)

- a. Observers are only able to view the location of Members that have invited them after creating their Observer Account at the following website:

http://66.161.28.109/monitoring/add_observer.asp

An Observer must be on a Member's Buddy List to view any activity

Supervisor Account

1. The user that originally registered the Pharos products (refer to **Section 7.1 Register & Subscribe**) is considered the Supervisor

Add Members

1. Login as Supervisor at:
<http://66.161.28.109/monitoring/login.asp>
2. Click “Manage Members”
3. Click “Add Member”
4. Fill in necessary fields, and click Submit
5. The new member will receive an email about his/her account, including a randomly created password

Note: Members can also be added in a Batch. This information is available on the website

Invite a Buddy

1. Log in as Supervisor or Member
2. Click “Manage My Buddy List”
3. Click “Invite to Join”
4. Complete and Edit the invitation email, and click Submit

Once the person invited receives the email, he/she needs to create an account by following the instructions in the email. You can invite Observers or existing Members/Supervisors

Additional Features

1. Edit Profiles
2. Reassign the Supervisor privileges
3. Remove Members/Buddies
4. Send Messages to Buddies

Note: Please visit the Pharos website for more information

Using Follow Me

From your Pocket PC:

1. Must have a valid Internet connection
2. GPS must be enabled
3. Must be logged in to Smart Login
4. **Tap GO → Power User → Smart Navigator → Follow Me**
5. This will turn on Follow Me. The program will provide a beeping sound to notify you that you are being tracked, and you will be visible to anyone on your Follow Me Buddy List either from a Pocket PC or via the Follow Me Real-Time Monitoring website.
6. **To turn off Follow Me, Tap GO → Power User → Smart Navigator → Follow Me**
7. To change Tracking Interval, tap GO → Power User → Tools → Options → Tracking Interval → and hit the Forward Arrow until you've selected the desired interval
8. When done, tap the Map Button to return to the Map Screen

Note: If one or more members of the same group are being tracked at the same time, Ostia will automatically display those members as different colored cars, allowing them to be viewed on the same map screen. Select members you want to see using check boxes. Drivers need to be within 5 miles of each other (limited by screen size & zoom level) to be displayed on the screen. Up to four members can be seen on the screen at once

Follow Me Real-Time Monitoring

From your Personal Computer (PC):

1. Login as Supervisor, Member, or Observer to view drivers on screen here:
<http://66.161.28.109/monitoring/login.asp>
2. Select Real-Time Monitoring
3. Select individual drivers, or all, to be displayed
4. You will then see the selected drivers on the map

8.0 GPS Receiver Setup and Configuration

Note: For Pharos All-In-One devices such as Traveler GPS 505, Traveler GPS 525, and EZ Road, the GPS receiver does not need to be setup or installed because it is already built into the device

8.1 GPS Status Indicator/Powering On the GPS Receiver



The Smiley Face at the bottom of the screen indicates the current status of the GPS receiver

Tap the GPS Status Indicator (face) to Power ON/OFF the GPS, as well as to Initialize (reset) the GPS. Refer to **Section 4.1 Map Screen Buttons**



Red Face = The Pocket PC is not receiving data from the GPS receiver. The receiver is either turned Off, or the connection, power or communication port (does not apply for Pharos All-In-One devices) may be disabled and should all be checked



Yellow Face = The GPS receiver is currently acquiring signals from the satellites for a signal lock, but does not yet have a lock



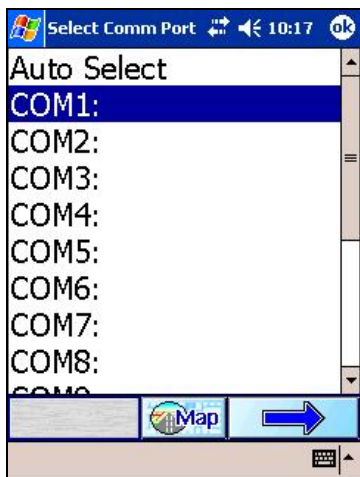
Note: This will also occur If the GPS does not have a clear view of the sky, or if there is environmental or electronic interference from any of the following items: radar detector, CB radio, Satellite radio, metallic material in windshields, 3rd party in-car navigation systems, etc.

Green Face = A GPS signal lock has been established and the system is ready for navigation. A red arrow will appear on the map, signifying the current position of the GPS receiver. The blue bars next to the face indicate the GPS signal strength.

8.2 Configuring GPS in Ostia

Note: Comm Port Selection only applies if using Windows Mobile-based devices

The first time Ostia starts, the **Select Comm Port** screen will appear. The screen allows you to configure the communication port that the GPS will be using. You can select the Comm Port manually or automatically.

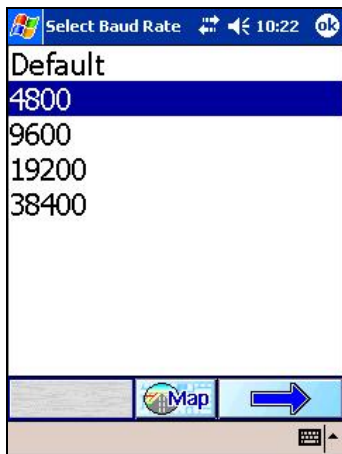


Selecting **Auto** will allow Ostia to configure your GPS automatically. For the majority of users, this will be sufficient.

If you prefer to set your GPS Comm Port **manually**, please refer to the User Manual of your handheld device for the appropriate Comm Port #. Select the COM# from the list, and tap OK when finished.

To access the GPS Configuration screen manually at any time, tap **GO → Power User → Tools → Select Comm Port**. Select the appropriate Comm Port needed, and tap the Forward Arrow when finished.

Note: If the GPS is taking a long time to acquire a satellite lock, tap **GPS → Initialize**, to reset the GPS Receiver



If you are using a Third-party GPS receiver on a Pocket PC or Pocket PC Phone, you can select the Baud Rate at which the GPS communicates to the software. The Baud Rate for your receiver should be listed in the packaging it came in.

For all Pharos labeled GPS receivers, the Baud Rate is 4800, or the Default.

Select the proper Baud Rate and hit the Forward Arrow.

8.3 Installing Pharos GPS Hardware

iGPS-SD

1. Insert the iGPS-SD into the Secure Digital Card port of the Pocket PC. Make sure you have installed the iGPS-SD driver from the driver disc. This is a separate process from installing any other software.
2. To install the driver, connect your device to the computer/laptop via Microsoft Activesync and run the Setup from the Driver Disk. When finished, perform a soft reset on your device, making sure the iGPS-SD driver is plugged into your device. This will activate the driver and allow you to use the GPS receiver.



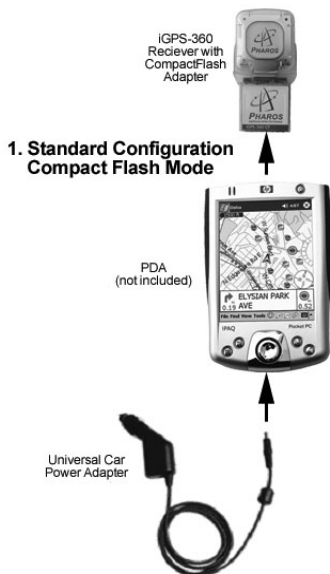
iGPS-360 and iGPS-500 Configurations

There are 4 (four) different setup configurations available for the iGPS-360 and iGPS-500.

1) Compact Flash Mode

1a. Insert the iGPS-360 or iGPS-500 into the Compact Flash adapter, and then into the Compact Flash slot of the Pocket PC. **Note:** If your GPS did not come with a CF adapter, you can purchase one from www.services.pharosgps.com/shopping

1b. The Universal Car Power Adapter can also be used, while in a vehicle, to supply power to the Pocket PC and GPS.



2) Compact Flash **Extended Antenna Mode**

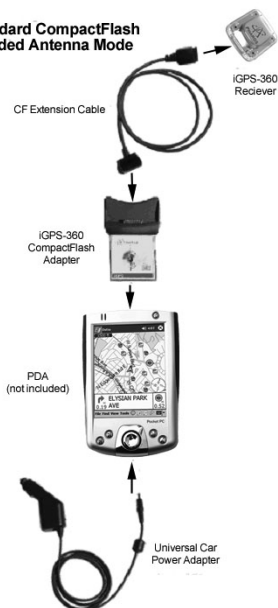
2a. Detach the iGPS-360 or iGPS-500 receiver from the Compact Flash Adapter base.

2b. Attach the CF extension cable between the iGPS-360 or iGPS-500 and the base.

2c. Insert the iGPS-360 or iGPS-500 Compact Flash Adapter base into the Compact Flash slot of the Pocket PC.

2d. The Universal Car Power Adapter can also be used, while in a vehicle, to supply power to the Pocket PC and GPS simultaneously.

2. Standard CompactFlash Extended Antenna Mode



3) Serial Attach Mode

3a. Connect the iGPS-360 or iGPS-500 to the Serial Cable specifically for your Pocket PC.

3b. Connect the Serial Cable to your Pocket PC serial port and connect the Universal Car Power Adapter. This mode requires power via the 12V cigarette lighter adapter in your vehicle to work.



4) Bluetooth

Your Passkey is:

12345678

For further info, please refer to the Walkthrough Guides in section II of your iGPS-BT User Manual or the Support section at

www.pharosgps.com for Bluetooth setup instructions.



9.0 Troubleshooting

Visit the Pharos website (<http://www.pharosgps.com/support>) for FAQs, tips, troubleshooting and latest updates.

Some things to watch for:

- Know how to do a “Soft Reset” on your Pocket PC as per your Pocket PC manual. This can resolve a large number of issues.
- With a serial-based GPS setup, you may need to disable the external keyboard for your PDA in your Programs list, if you have one. It may need to be disabled every time you soft reset, as most are programmed to be enabled by default.
- Make sure you are outside in an area clear of any obstructions that may block the GPS satellite signals to your GPS receiver. Obstructions include large buildings, as well as mountains, tunnels, and even large trees planted very close together
- To use a storage card for map storage, make sure the *.rmf and *.inx files for each map are stored in a "My Documents" folder and that the folder is not located inside any other folders or directories. It must appear as follows to function properly:
My Documents
(Take note of spacing and capitalization. They are important.)
- The Registration key is located on the inside flap of the cardboard CD holder, and the UPC code is on the back
- When trying to connect your device to your laptop/tablet/PC, you need to have the latest version of ActiveSync installed and showing that it is both Connected and Synchronized. If you do not have the latest version, you can download it from www.microsoft.com/windowsmobile. Devices using Windows Mobile 5.0 or higher require ActiveSync 4.1 or higher
- Since the Canadian highway/motorway map does not cover the entire country, when trying to route in Canada across long distances, and you are unable to create a route using the highway/motorway map, try opening all the necessary local maps to create the route

10.0 Contact Us at Pharos

Pharos Science and Applications, Inc.

<http://www.PharosGPS.com>

411 Amapola Avenue

Torrance, CA

90501-1478

USA

Phone: • Toll free at 888-PHAROS8 (888-742-7678) for
Technical Support in USA and Canada
• 877-774-2767 for Product Info & Sales

Fax: 310-320-1808

Email: Support@PharosGPS.com
Sales@PharosGPS.com
Info@PharosGPS.com

Telephone technical support is available Monday through
Friday between the hours of 8:30 AM to 5:30 PM Pacific
Standard Time

11.0 SOFTWARE LICENSE AGREEMENT

This is a legal agreement ("this Agreement") between you ("Licensee") and Pharos Science & Application, Inc. (Pharos). By opening the Pocket PC, Ostia software package ("Software Package") and or by using the Pocket PC, Ostia software ("Software"), you agree to be bound by the terms of the Agreement.

If you do not agree to the terms of this Agreement, promptly return the software, and its accompanying items, to the retailer.

1. Grant of License: This Software License Agreement ("License") permits Licensee to use one (1) copy of the Software Package enclosed with the License. The Software Package includes Software and documentation. This non-exclusive License, without the right to sublicense, rent or lease, is to install and use the Software on a single personal computer.

2. Software Transfer: Licensee may permanently transfer the License and all rights hereunder to a third party by written notification to Pharos and where the recipient agrees to the terms of the License. When Licensee delivers the entire Software Package to a third party, Licensee must also destroy any and all remaining copies of the Software whether installed on a personal computer or other device. Such a transfer terminates Licensee's rights to upgrade the Software or map information.

3. Pharos' Rights: Licensee acknowledges that the Software consists of proprietary, unpublished products of Pharos, protected under U.S. copyright law and trade secret laws of general applicability. Licensee further acknowledges and agrees that all right, title, and interest in and to the software are and shall remain with Pharos. This Agreement does not convey to licensee an interest in or to the software, but only a limited right of use, revocable in accordance with the terms of this Agreement.

4. Limitation of Liability: IN NO EVENT WILL PAHROS OR ITS SUPPLIERS BE LIABLE FOR ANY INDIRECT, SPECIAL INCIDENTAL, ECONOMIC OR CONSEQUENTIAL DAMAGES, ARISING OUT OF THE USE OF OR INABILITY TO USE THE SOFTWARE PACKAGE, INCLUDING SOFTWARE OR DOCUMENTATION, EVEN IF ADVISED OF THE POSSIBILITY OF SUCH DAMAGES. IN NO CASE SHALL PHAROS OR ITS SUPPLIERS' LIABILITY EXCEED THE AMOUNT PAID BY LICENSEE FOR THE SYSTEM. Some states do not allow the exclusion or limitation of liability for incidental or consequential damages, so in those states, the above limitation or exclusion may not apply to you.

5. Disclaimer of Warranty: THIS SOFTWARE AND THE ACCOMPANYING FILES ARE SOLD "AS IS". PHAROS AND ITS SUPPLIERS DISCLAIM ANY WARRANTIES AS TO PERFORMANCE OR MERCAHNDISE OR ANY OTHER WARRANTIES WHETHER EXPRESSED OR IMPLIED. In particular, there is no warranty for high-risk activities. NO WARRANTY OF FITNESS FOR A PARTICULAR PURPOSE IS OFFERED. The user must assume risk of using the program.

6. Limitations on Reverse Engineering, Decompilation, and Disassembly: Licensee may not reverse engineer, decompile, or disassemble the Software, except and only to the extent that such activity is expressly permitted by applicable law notwithstanding this limitation.

7. Separation of Components: The Software is licensed as a single product. Its component parts may not be separated for use on more than one computer.

8. Termination: Without prejudice to any other rights, Pharos may terminate this License if Licensee fails to comply with the terms and conditions of this license. In such event, Licensee must destroy all copies of the Software and all its component parts.

9. Copyright: All title and copyrights in and to the Software (including but not limited to any images, photographs, animations, video, audio, music, and or text incorporated into the Software), the accompanying printed materials, and any copies of the Software are owned by Pharos or its suppliers. Copyright laws and international treaty provisions protect the Software. You may not copy the printed materials accompanying the Software.

10. Governing Law: The agreement shall be governed by the laws of the State of California.

11. Export Laws and Regulations: Licensee agrees to comply fully with all relevant export laws and regulations thereof, is not exported, directly or indirectly, in violation of United States laws.

12. Proprietary Products: For purpose of any public disclosure provision under and federal, state or local law, it is agreed that the Products are a trade secret and a proprietary commercial product and not subject to disclosure.

13. Restricted Rights: End User hereby represents and warrants that the Products shall be protected for public disclosure and considered exempt from and statute, law, regulation, or code, including any sunshine Act, Public Records Act, Freedom of Information Act, or equivalent, which permits access and/or reproduction or use of the Products. In the event of breach of any part of this paragraph by such disclosure, this Agreement shall be considered breached and any and all right to retain any copies or to use of the Products shall be terminated and considered immediately null and void. Any copies of the Licensed Products held by End User shall immediately be destroyed. If any court of competent jurisdiction considers this clause void and unenforceable in whole or in part, for any reason this Agreement shall be considered terminated and null and void, in its entirety, and any and all its copies of the products shall immediately be destroyed.

14. Portions of this product may be Copyrighted (c) by 1996-2006 Telcontar, TeleAtlas, or NAVTEQ.