

LOWRANCE®



LWX-1



***Sirius Audio & Weather Antenna
Operation Manual***

**Copyright © 2009 Navico
All Right Reserved.**

No part of this manual may be copied, reproduced, republished, transmitted or distributed for any purpose, without prior written consent of Lowrance.

LWX-1 is a trademark and Lowrance® and Navico® are registered trademarks of Navico, Inc.

Sirius is a registered trademark of Sirius.

Navico may find it necessary to change or end our policies, regulations and special offers at any time. We reserve the right to do so without notice. All features and specifications subject to change without notice.

For user manuals and the most current information on this product, its operation and accessories, visit our web site:

www.lowrance.com

Lowrance Electronics
12000 E Skelly Dr.
Tulsa, OK 74128-2486

Contents

Introduction.....	2
Audio	3
Turning on/off Sirius Audio.....	3
Viewing Sirius Status.....	4
<i>Media Bar Controls.....</i>	4
Channels	5
Listening to Sirius Audio	5
Favorites.....	5
Subscribed Channels	6
All Channels	6
By Category.....	7
Lock Channel.....	7
Change Lock Code.....	7
Volume.....	8
Weather	9
Displaying Weather on Chart page:	9
View.....	10
Current Conditions.....	11
Alarms	11
Lightning distance and Storm distance.....	12
Icons.....	12
Marine Zone	13
Adjust.....	14
Animate	15
Transparency.....	16
SIRIUS Subscription Levels	16

Introduction

Thank you for purchasing the LWX-1 SIRIUS Audio/Weather Antenna. This manual documents how to use SIRIUS features using an HDS display unit. The information in each section follows the same sequence as your display unit's menus.

Lowrance Customer Service

12000 E Skelly Dr

Tulsa, OK 74128

(800) 324-1356

Canada (800) 661-3983 or (905) 629-1614

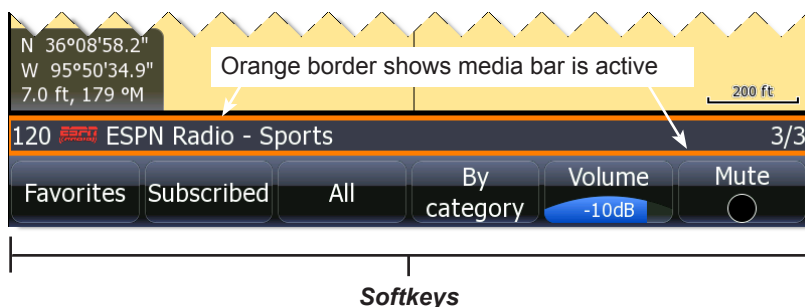
Manual Conventions

When you are instructed to press a button in this manual, the button will be shown in all caps and bold text like — **MENU**, **EXIT**, **ENTER**, etc. If you are instructed to select an item from a menu, the item to be selected will be listed in bold like — **Brightness**, **Key beeps**, etc.

For example: Press **MENU**, select **Language** and press **ENTER**.

Softkeys

The instructions in this manual show how to adjust SIRIUS audio and weather features/settings using display unit menus. If you have an HDS unit with softkeys, you can get the same results using the softkeys.



Active Status

Controls what menu will appear when **MENU** is pressed. The media bar must be active for menu-driven adjustments to be made to SIRIUS audio; likewise, the page screen must be active for page screen menus to be accessible. When the media bar or page screen are active, they will have an orange border.

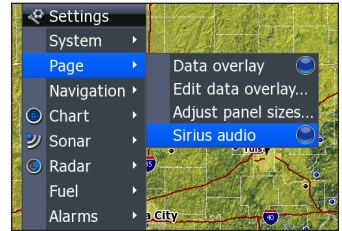
To switch active status between the media bar and page screen, press and hold **PAGES** for two seconds.

Audio

SIRIUS Audio

Turns on/off SIRIUS Audio. With Audio turned on a scrolling media bar will appear at the bottom of the display.

The media bar controls volume, channels and access to the Sirius Audio menu.



To turn on/off SIRIUS audio:

1. Press **MENU** twice
2. Select **Page** and press **ENTER**.
3. Highlight **Sirius audio** and press **ENTER**.



NOTE: To enable SIRIUS audio, the LWX-1 must be connected to an HDS unit via an ethernet cable.

Subscription Status

The screenshot shows the 'Sirius status' screen. At the top, it says 'Weather subscription is active. Weather should work properly. Audio subscription is active. Audio should work properly.' Below this is a table of status information. Annotations with arrows point to specific parts of the screen: 'Subscription Status' points to the 'Weather status' and 'Audio status' rows; 'Signal strength' points to the 'Signal strength' row; 'LWX-1 ESN (electronic serial number)' points to the 'ESN' row. A separate annotation points to the 'Service level' row, stating: 'There are three (subscription) service levels: Inland, Mariner and Voyager (www.sirius.com/marineweather)'.

Sirius status	
Weather subscription is active. Weather should work properly. Audio subscription is active. Audio should work properly.	
Signal strength	3/3
Weather status	Active
Audio status	Active
ESN	028280326922
Antenna	Connected
Service level	Mariner

Signal strength
1/3 (weak)
2/3 (good)
3/3 (preferred)

Subscription Status

Subscription Status

There are three (subscription) service levels: Inland, Mariner and Voyager (www.sirius.com/marineweather)

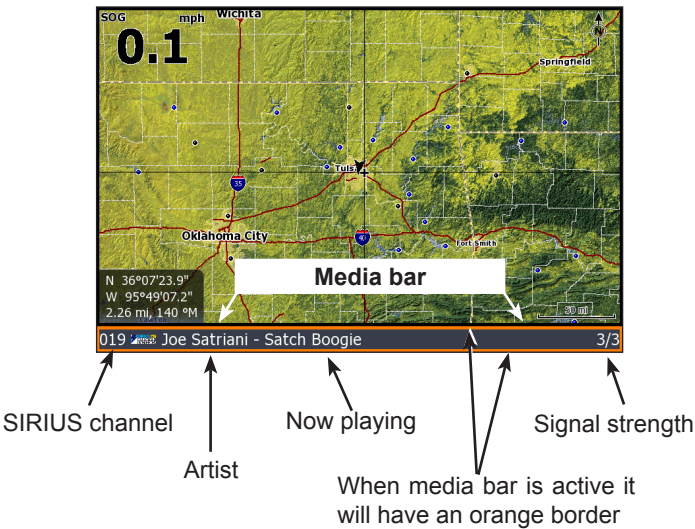
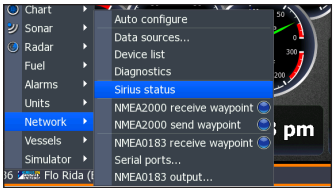
LWX-1 ESN (electronic serial number)

SIRIUS Status

Displays status of SIRIUS antenna, weather/audio signal and subscription information.

To view SIRIUS status:

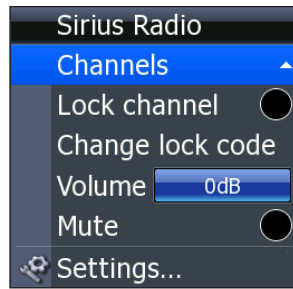
- 1. Press **MENU** twice.
- 2. Highlight *Network* and press **ENTER**.
- 3. Select *Sirius status* and press **ENTER**.



Media Bar Controls	
Pages	With the media bar on screen, you can make it active by holding down the Pages key for two seconds; the media bar has an orange border when it is active
Zoom In/Zoom Out	Zoom in decreases volume; Zoom out increases volume
Keypad Up/Down	Pressing the keypad up/down switches through Favorite channels; pressing the keypad left/right switches though all subscribed channels
Menu	Pressing the Menu key will open SIRIUS Audio menu when the media bar is active



NOTE: Media Bar controls work only when the Media Bar is active



SIRIUS Audio Menu

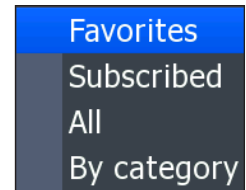
SIRIUS Audio Menu

Controls SIRIUS audio features. With the media bar active, you can access the Audio Menu by pressing **MENU**.

Channels

Allows you to view all available channels and access all subscribed channels by category or favorites. That makes it easier to access desired channels.

To access the Channels menu, select **Channels** from the SIRIUS Audio menu and press **ENTER**.



Channels menu

Listening to SIRIUS audio

You can select an audio channel to listen to from any of the Channel screens — Favorites, Subscribed, All or By Category.

To listen:

1. Use the keypad to select **Favorites**, **Subscribed**, **All**, or **By Category** from the Channels menu and press **ENTER**.
2. Highlight a desired audio channel and press **ENTER**.

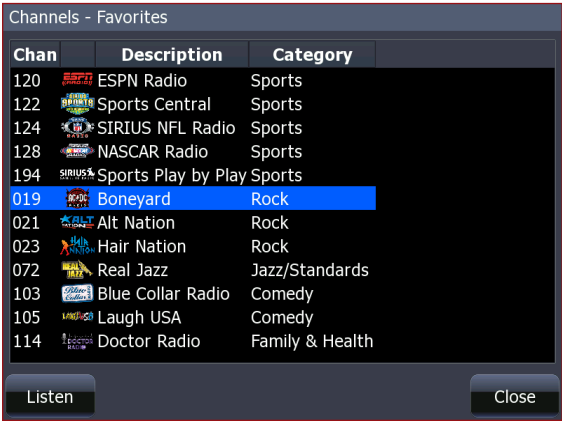


NOTE: You will not be able to select channels from the Favorites screen until channels have been added to the Favorites list.

Favorites

Used to access/listen to channels added to the favorites list. The favorites list groups your most desired channels in one place.

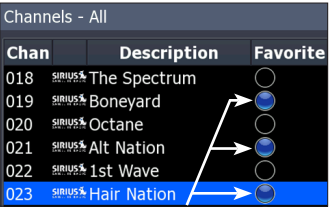
To access the Favorites, select ***Favorites*** from the Channels menu and press **ENTER**.



Favorites screen

Adding/removing Favorite channels:

1. Select *All* from the Channels menu and press **ENTER**.
2. Use the keypad to select a desired channel.
3. Highlight the desired channel and press the keypad left/right; or use the **MENU** key to make the selection.
4. Repeat Steps 2 and 3 to remove a channel from the Favorites list.

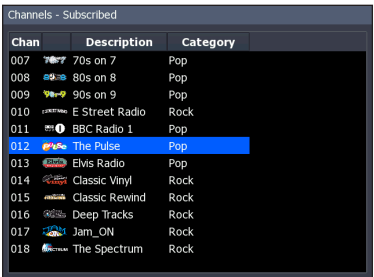


Channels added to Favorites

Subscribed Channels

List of channels included in your SIRIUS subscription. Allows you to access only channels you can use.

To access Subscribed Channels, highlight ***Subscribed*** on the Channels menu and press **ENTER**.



All Channels

Accesses list of all SIRIUS channels available. The All Channels list allows you to see all available channels, both subscribed and unsubscribed. You also can add channels to favorites.

To access the All Channels list, select **All** on the Channels menu and press **ENTER**.

By Category

Groups SIRIUS channels by category, allowing you to see all available channels from a desired genre.

To view channels by category:

- 1. Highlight **By Category** on the Channels menu and press **ENTER**.
- 2. Press the keypad left/right to toggle through SIRIUS audio categories.



Lock Channel

A parental control that prevents selected channels from being broadcast unless an unlock code is entered.

To Turn on/off Lock Channel:

- 1. Select **Lock Channel** from the SIRIUS Audio menu and press **ENTER**. A dialog box will appear.
- 2. Use the keypad to input the desired code and press **ENTER**.



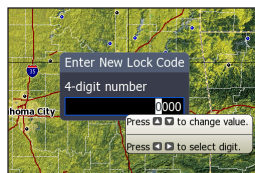
NOTE: *You must start listening to a locked channel within 5 minutes of entering the lock code; otherwise, you will have to re-enter the lock code to access the channel.*

Change Lock Code

Used to lock individual channels so they can not be accessed without entering a code.

To change the lock code:

1. Select **Change Lock code** from the Sirius Audio menu and press **ENTER**.
2. Use the keypad to input the desired code and press **ENTER**.

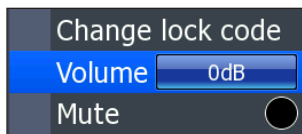


Changing Lock code to default setting (0000)

1. Make sure the media bar is active and all menus are closed.
2. Press **ZIN, ZOUT, ZIN, ZOUT, ZIN, ENTER**.

Volume

To adjust SIRIUS Audio volume, highlight **Volume** on the Sirius Audio menu and press the keypad left/right.



Mute

Silences SIRIUS Audio. To mute audio, select **Mute** on the SIRIUS audio menu and press **ENTER**. Repeat this step to turn off mute.



NOTE: *You must have a Sirius weather and audio (optional) subscription to use the associated features in your unit.*

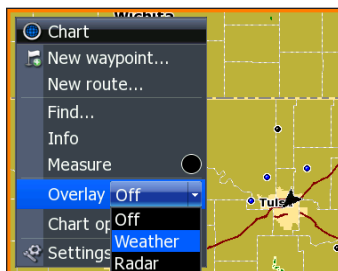
Weather

Overlay

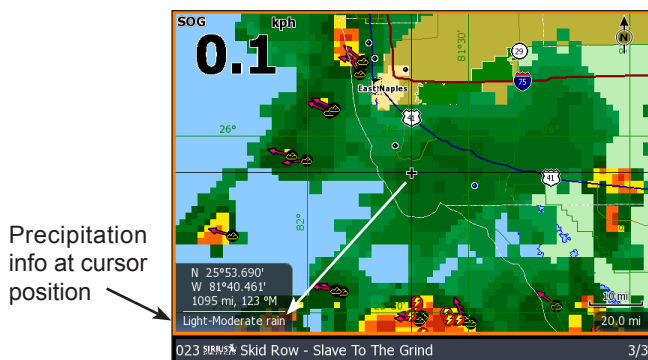
Used to display weather or radar data on the Chart page.

Displaying Weather on Chart page:

1. From the Chart page press the **MENU** key. The Chart menu will appear.
2. Select **Overlay** and press **ENTER**.
3. Select **Weather** and press **ENTER**.
The Weather options menu will appear.



NOTE: The Overlay menu will only be visible when a radar is attached or when an LWX-1 is/has been connected to your HDS unit via ethernet.



Weather data and Sirius Media bar shown on the chart page.

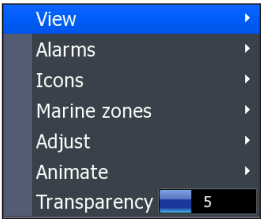
Precipitation Color Guide

Precipitation Color Guide	
Green	Rain
Yellow Orange Red	Rain with increasing intensity from yellow to red
Purple	Rain/Snow mix
Blue	Snow
When moving the cursor over the colors, precipitation info will be shown in the lower left corner of the screen	

Weather options menu

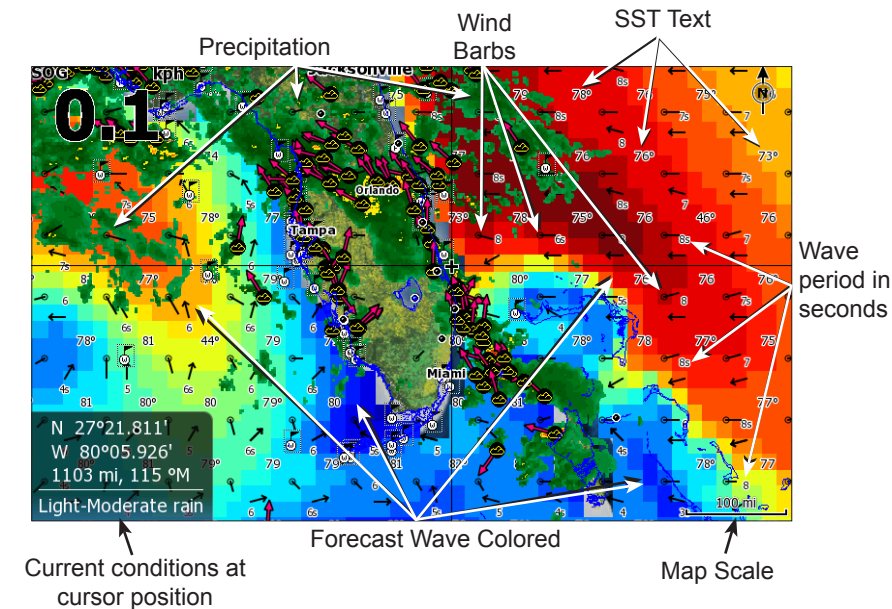
Controls the way weather data is displayed and how you will be alerted if severe weather approaches.

To access the Weather options menu, select *Weather options* from the Chart menu and press **ENTER**.

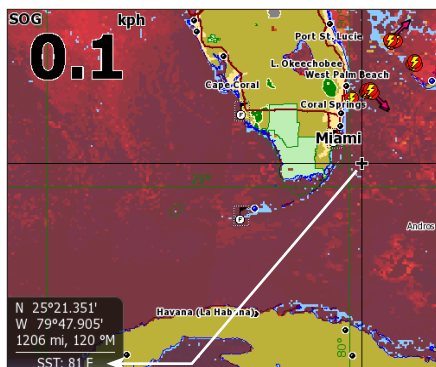


View

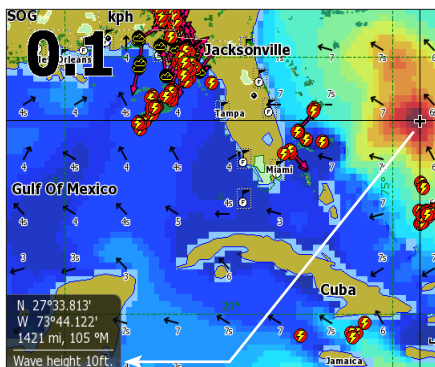
Turns on/off Precipitation, SST (Sea Surface Temp) colored, SST text, Forecast wave colored and Forecast wind barb graphic weather displays. To access the View menu, select *View* from the Weather options menu and press **ENTER**.



View Menu Features	
Precipitation	rain (green, yellow, orange or red — depending on severity); rain/snow mix (purple) and snow (blue)
SST Colored	sea surface temp range (dark blue to dark red)
SST Text	displays sea surface temp as text
Forecast Wave Colored	wave height range shown (dark blue to dark red); arrows show wind direction; wave period shown in seconds (5s = 5 seconds)
Forecast Wind Barbs	shows direction the wind is coming from (from barb to circle)



SST Colored: current SST at cursor position is 81 degrees Fahrenheit.



Forecast Wave Colored: wave height forecast at cursor position is 10 feet.



NOTE: It is not uncommon for clouds to block satellites that provide SST data, causing gaps in SST coverage.

Current Conditions

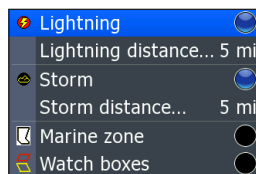
When Precipitation and SST Colored are displayed, the current conditions at the cursor position will be displayed in dialog box in the lower left corner of the screen. Forecast Wave Colored shows forecasted wave heights at the cursor position.

To turn on/off View options select the desired graphic display from the View menu and press **ENTER**.

Alarms

Enables/disables Lightning, Storm, Marine Zone and Watch boxes weather alarms. Alarms help you stay aware of nearby weather conditions without having to keep your eyes trained on the unit. You can also set alarm distance thresholds for Lightning and Storm alarms.

To access the Alarms menu, select **Alarms** from the Weather options menu and press **ENTER**.



Weather Alarms	
Lightning	Triggered when lightning strikes within a selected distance
Storm	Triggered when a storm moves within a selected distance
Marine Zone	Sounds an alarm when a severe weather alert is issued within the selected marine zone
Watch Boxes	Sounds an alarm if your vessel is inside a watch box or moves into a watch box

To turn on an alarm, highlight the desired alarm on the Alarms menu and press **ENTER**.

Lightning distance and Storm distance

Alarm thresholds that trigger an alarm when lightning or a storm moves within a selected distance.



To set alarm distances:

1. Highlight ***Lightning distance*** or ***Storm distance*** on the Alarms menu and press **ENTER**.
2. Use the keypad to input the desired distance.
3. Press **ENTER**.

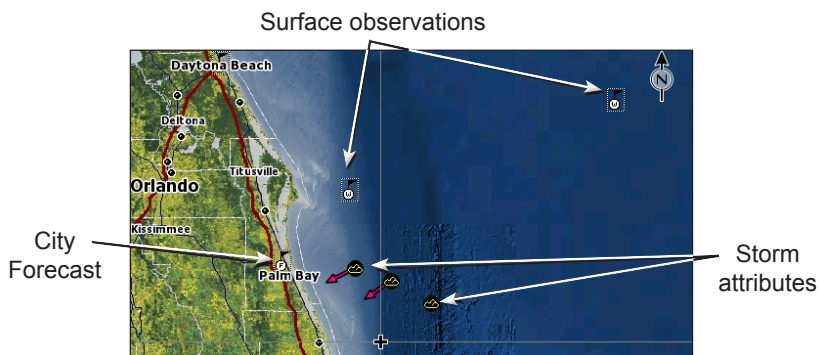
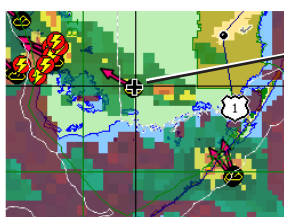


Chart screen with City forecasts, Surface observations and Storm attributes icons displayed

Icons

Turns on/off City forecasts, Lightning, Surface observations, Storm tracks, Storm attributes and Watch boxes weather icons. Center the cursor over any weather icon — except lightning — and press Enter to open the icon information screen.

Icon information	
City forecasts	displays forecast information for selected city 🏠
Lightning	shows where lightning strikes ⚡ have occurred
Surface observations	displays information about surface information like wind speed, temperature, precipitation, etc. 🌡️
Storm tracks	shows info on severity and past 🌀, present 🌀 and future 🌀 path of a storm
Storm attributes	changes icons based on conditions — regular cell ☁️, hail 🌨️, tornado 🌪️, etc.
Watch boxes	shown in center of the watch box ⚠️; displays weather watch information



Storm attributes icon selected by cursor



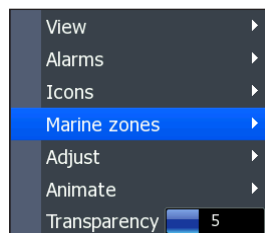
Storm attributes info

To access the Icons menu, select **Icons** from the Weather options menu and press **ENTER**.

Marine Zone

Allows you to select a marine zone and then read the forecast for the selected zone.

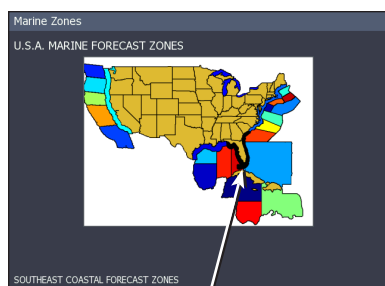
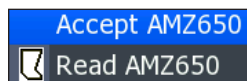
To access the Marine Zone menu highlight **Marine Zone** on Weather options menu and press **ENTER**.



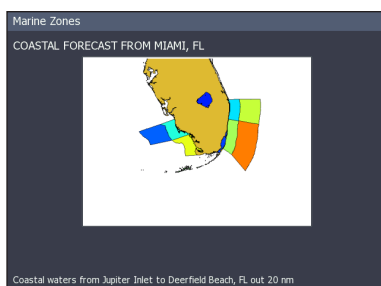
NOTE: Once a marine zone is accepted, it will be your default zone until you change it. After accepting a zone, you no longer will have to select the zone before reading its forecast.

To select a marine zone:

1. Select **Choose** from the marine zone menu and press **ENTER**.
2. Press the **ZOOM OUT** key until the region containing the desired marine zone is shown on the screen.
3. Use the keypad to select the desired region. Press the **ZOOM IN** key to view marine zones within the selected region.
4. Use the keypad to select the desired marine zone and press **MENU**.
5. Select **Accept** or **Read** and press **ENTER**.



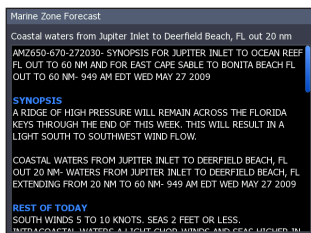
Selected marine forecast zone



Press Zoom in key to view marine zones within a selected region

To view accepted marine zone forecast:

1. From the Marine Zone menu, highlight **Read (marine zone name)** and press **ENTER**.
2. Use the keypad to scroll through the forecast and press **EXIT**.



Adjust

Used to select a range for the SST Colored and Wave Height color settings. To access the Adjust menu, select **Adjust** from the Weather options menu and press **ENTER**.

SST Range consists of cool and warm thresholds. The SST on screen colors automatically adjust to the range you select using dark blue for the selected cool threshold and dark red for the warm threshold. Temps between the cool and warm thresholds will vary in color.



Adjust menu

Wave Height uses minimum and maximum thresholds. Forecast Wave Color will automatically adjust to the thresholds you select. The minimum wave height will be shown in dark blue with wave heights at the maximum threshold shown in dark red.

To adjust SST or Wave Height:

1. Select *SST* or *Wave Height* from the Adjust menu and press **ENTER**.
2. Highlight the desired field (*Cool/Warm* or *Minimum/Maximum*) and press **ENTER**.
3. Use the keypad to input the desired SST range (Cool/Warm) or Wave Height range (Minimum/Maximum) values.
4. Select *Save* and press **ENTER**.



Animate

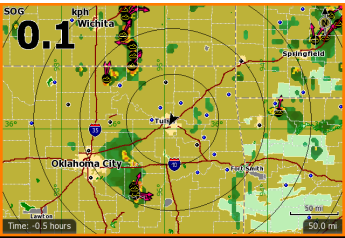
Replays the track and development of a storm from a selected time period. That allows you to observe how a storm is developing and where it may be headed next.



After selecting a time period to animate, you can have the storm animation move at manual, low, medium and high speeds.

To select Time period or Speed:

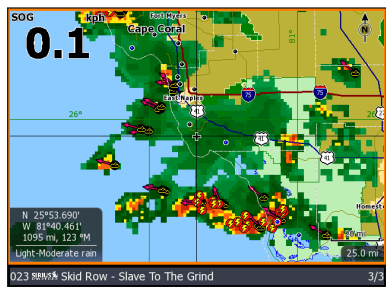
1. Highlight *Animate* on the Weather Options menu and press **ENTER**.
2. Select *Time period* or *Speed* and press **ENTER**.
3. Choose the desired time period or speed and press **ENTER**.



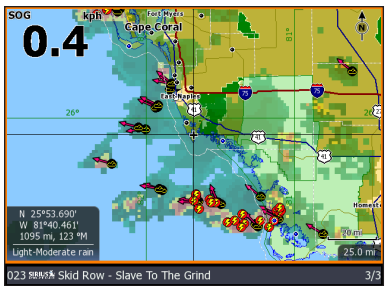
Animate time readout; scenario shows storm location 30 minutes ago

Transparency

Controls the transparency of the weather overlay, allowing you to view important navigation information like the shoreline, while a storm is passing through. Transparency does not affect weather icons.



Transparency set to minimum.



Transparency set to 10.

To make adjustments, highlight *Transparency* on the Weather Options menu and press the keypad left/right.

SIRIUS Subscription Levels			
Weather Content	Inland	Mariner	Voyager
Weather Radar w/ Precip type	✓ *	✓	✓
City Forecast	✓	✓	✓
Storm Attributes (speed and direction)	✓ *	✓	✓
Lightning	✓ *	✓	✓
Weather Warnings and Watchboxes	✓	✓	✓
Weather Observations and Buoys		✓	✓
Tropical Storm Tracks with Windfields	✓	✓	✓
Marine Zone Forecasts		✓	✓
High Resolution Sea Surface Temps		✓	✓
Forecast Wind and Waves		0-3 hour	0-48 hour
SIRIUS Channel Art	✓	✓	✓
<p>SIRIUS audio can be added to Inland and Mariner weather data subscriptions. Audio is included in Voyager subscriptions.</p> <p>* Viewable within 90-mile radius of vessel in vessel mode, but can be viewed up to 160 miles in browse mode.</p> <p>Visit www.sirius.com/marineweather for subscription details.</p>			

Visit our website:

www.lowrance.com



* 9 8 8 - 0 1 5 8 - 1 5 A *

© Copyright 2009
All Rights Reserved
Navico Holding AS