



Designed to move you™



diNovo Mini™

Palm-sized keyboard with media remote and ClickPad

Reviewer's Guide



Table of Contents

Part 1: Product Overview	1
1.1 Introduction.....	1
1.2 Brief Market Summary	2
1.3 Major Features	2
1.4 Product Specifications.....	7
Part 2: Setup and Use	8
2.1 Installation Tips	8
2.2 Using the diNovo Mini	8
2.3 What to Look For.....	9

Additional Resources

Images and resources are available online at <http://www.logitech.com/pressroom>, or from the Logitech contact listed below

Press Relations Contact (not for publication)

Kate Brinks
Public Relations Manager
Mice, Keyboards and Harmony Universal Remote Controls
510-713-5115 office
415-823-3121 mobile
kate_brinks@logitech.com

Contact References (for publication)

Refer your readers to: www.logitech.com
Sales: 800-231-7717

Note to reviewers: This guide provides information to help you craft your independent review of the Logitech diNovo Mini™ palm-sized keyboard with media remote and ClickPad. The Communications team at Logitech hopes you find our efforts helpful; we would appreciate your feedback.

© 2007 Logitech Inc.

Copyright declarations:

Logitech, the Logitech logo, and diNovo Mini are trademarks or registered trademarks of Logitech Inc. Bluetooth is a registered trademark of Bluetooth SIG, Inc. Windows Vista, the Windows Vista logo, the Windows Vista with Media Center Start button, Windows XP, and Media Center are trademarks or registered trademarks of Microsoft Corp. Macintosh is a registered trademark of Apple Inc. Other names may be trademarks or registered trademarks of their respective owners.

Part 1: Product Overview

1.1 Introduction

The Logitech diNovo Mini™ is unique. For those who have connected their PC to the TV, the diNovo Mini provides total control of PC entertainment from the sofa.

The contoured, palm-sized, cordless mini-keyboard fits comfortably in your hand to give you unmatched control when you want to enjoy PC entertainment on your big-screen TV. To optimize the living-room-PC experience, the diNovo Mini makes the following activities easy:

- Browsing the Internet
- Watching TV and film
- Listening to music
- Playing PC games

And with its sleek styling and smoke-colored fold-down cover, the diNovo Mini complements any living room décor.

Additional benefits include:

- Dedicated Windows® Media Center controls optimize launch and navigation of Microsoft's popular entertainment platform
- The unique, integrated, dual-purpose ClickPad serves as a touch pad and a directional pad
- Rechargeable Li-ion batteries provide up to a month of battery life
- Bluetooth® wireless technology provides long-range wireless control from up to 30 feet and backlighting makes text entry effortless, even in low light



The Logitech diNovo Mini is the first cordless mini-keyboard that optimizes access and control of popular digital entertainment activities, including browsing the Internet,

watching TV, listening to music and viewing photos and videos. Designed with digital media enthusiasts in mind, the diNovo Mini gives you total control of your PC entertainment from the comfort of the sofa.

Compatible with computers running Microsoft® Windows Vista® or Windows® XP, the diNovo Mini sells for a suggested retail price of \$149.99 (U.S.).

Top Five Features: Logitech diNovo Mini

Palm-sized mini-keyboard	Fits comfortably in your hand – and your lifestyle, too
Integrated, dual-purpose ClickPad	Use as a touch pad to point, scroll, and click, or as a directional pad to navigate menus and make selections. Switching functions is virtually instantaneous.
Rechargeable Li-ion battery	Get up to one month between charges from the slim, lithium-ion battery
Bluetooth wireless	Better than infrared remotes that require a direct line of sight, Bluetooth® wireless technology provides long-range wireless control up to 30 feet
Backlighting	Makes text entry effortless, even in low light.

1.2 Brief Market Summary

The Logitech diNovo Mini™ is the perfect product for the times. Computers – especially those with built-in TV tuners – are moving into the living room and the den, where they are getting connected to the family's big-screen televisions. Although it's a scenario that didn't even exist in 2006, analyst firm Parks Associates predicts that 12 million of these computers will be installed in the U.S. and Western Europe by 2010.¹

In the U.S., a recent study predicts that sales of all multimedia PCs, including those with TV tuners and media servers (a healthy 11.3 million units were sold in 2006) are expected to reach 47.6 million units in 2010.²

For all of these consumers, the so-called "living-room user interface" is growing increasingly important. However, optimized navigation of computer multimedia – while sitting 20 feet away from a large-screen TV – only works well when the control device is designed specifically for PC entertainment. The traditional button layout of a keyboard is too big; even the most-sophisticated remote control is too limited.

1.3 Major Features

A device that supports the way people use a living-room PC must perform in two distinct modes:

- Touch-pad mode
- Media-remote mode

¹ Sources: Gartner, Parks Associates, Logitech internal research.

² Parks Associates, "Media Servers: Analysis and Forecasts," May 2006.

The touch-pad mode is for when people use their living room PCs for typical computer operations, such as browsing the Internet, typing Web addresses sending instant messages and composing e-mails. In this mode, people need a device with keyboard- and pointing-device functionality.

As a media-PC remote, however, the functionality must support viewing TV, watching movies, playing games and listening to music. In this mode, people need a device that can help them control and navigate their PC's entertainment media.

The diNovo Mini features two distinct personalities – instantaneously switchable – to handle both scenarios.

Touch-Pad Mode

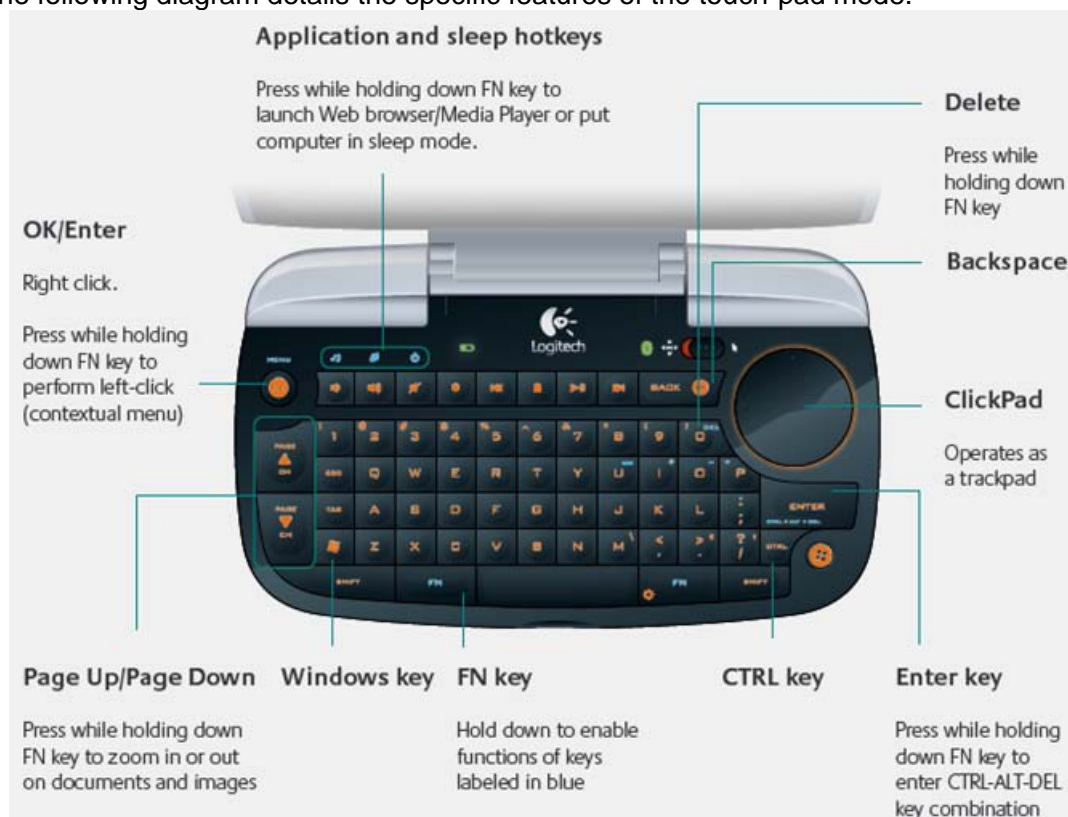


When the mode switch is moved to the right, revealing an orange indicator with cursor arrow, the diNovo Mini assumes its touch-pad identity.

The major features of the touch-pad mode include:

- Glowing, soft-orange backlighting. An ambient-lighting sensor built into the diNovo Mini automatically adjusts the backlighting.
- Large, round ClickPad, which works exactly like a touch pad on a laptop PC
- Traditional keyboard, which makes traditional computer operations, such as typing e-mail, easy to do from your sofa

The following diagram details the specific features of the touch-pad mode.





In touch-pad mode, the ClickPad functions like a touch pad. On-screen cursor navigation is done by moving a finger across the ClickPad, which is perfect for Web surfing or other traditional computer operations. Note the orange backlit ring around the ClickPad.

Media-Remote Mode

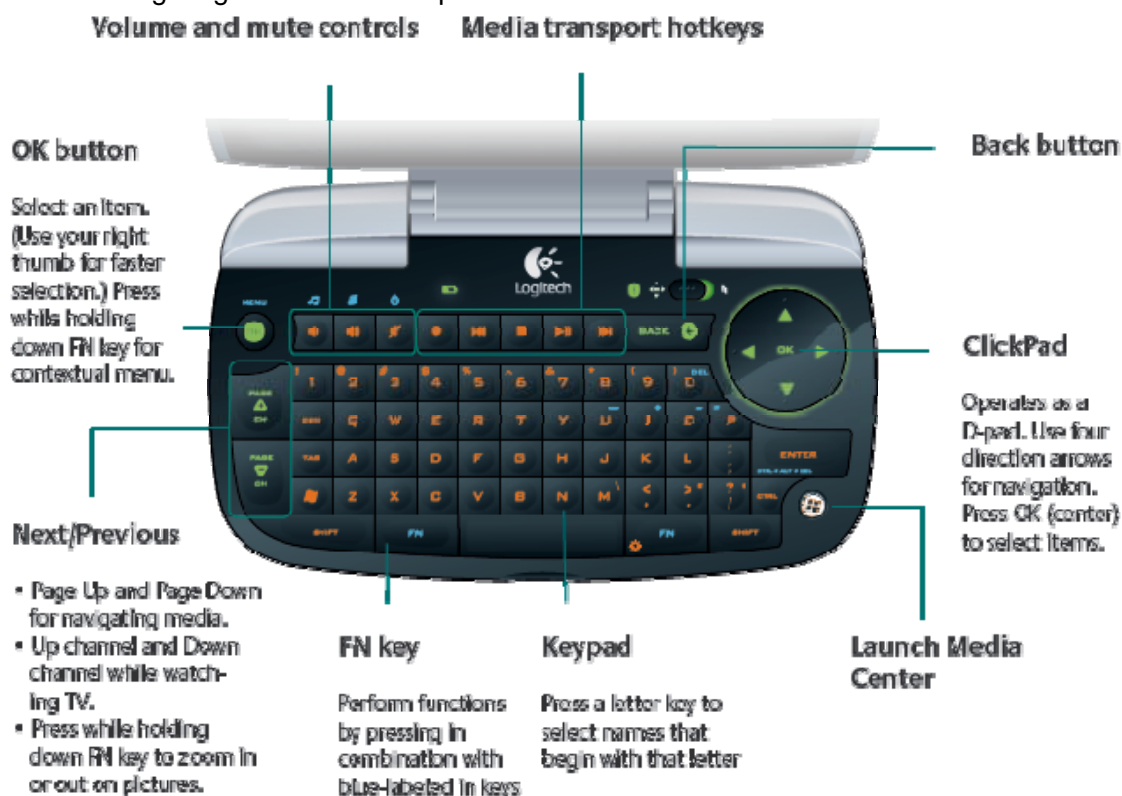
With the mode switch moved to the left, you'll see a green indicator (at top right). When this light is on, the diNovo Mini operates in media-remote mode.

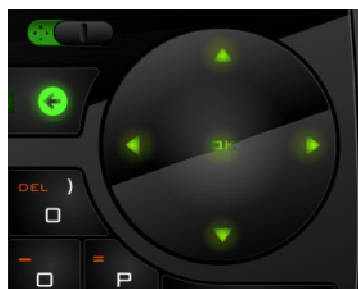


The major features of the media-remote mode include:

- Platform intimacy with Microsoft Windows XP Media Center Edition 2005 and Windows Vista Media Center
- Optimized ability to watch a DVD, view photos, or listen to music with your living-room PC
- Glowing, soft-green backlighting

The following diagram details the specific features of the media-remote mode.



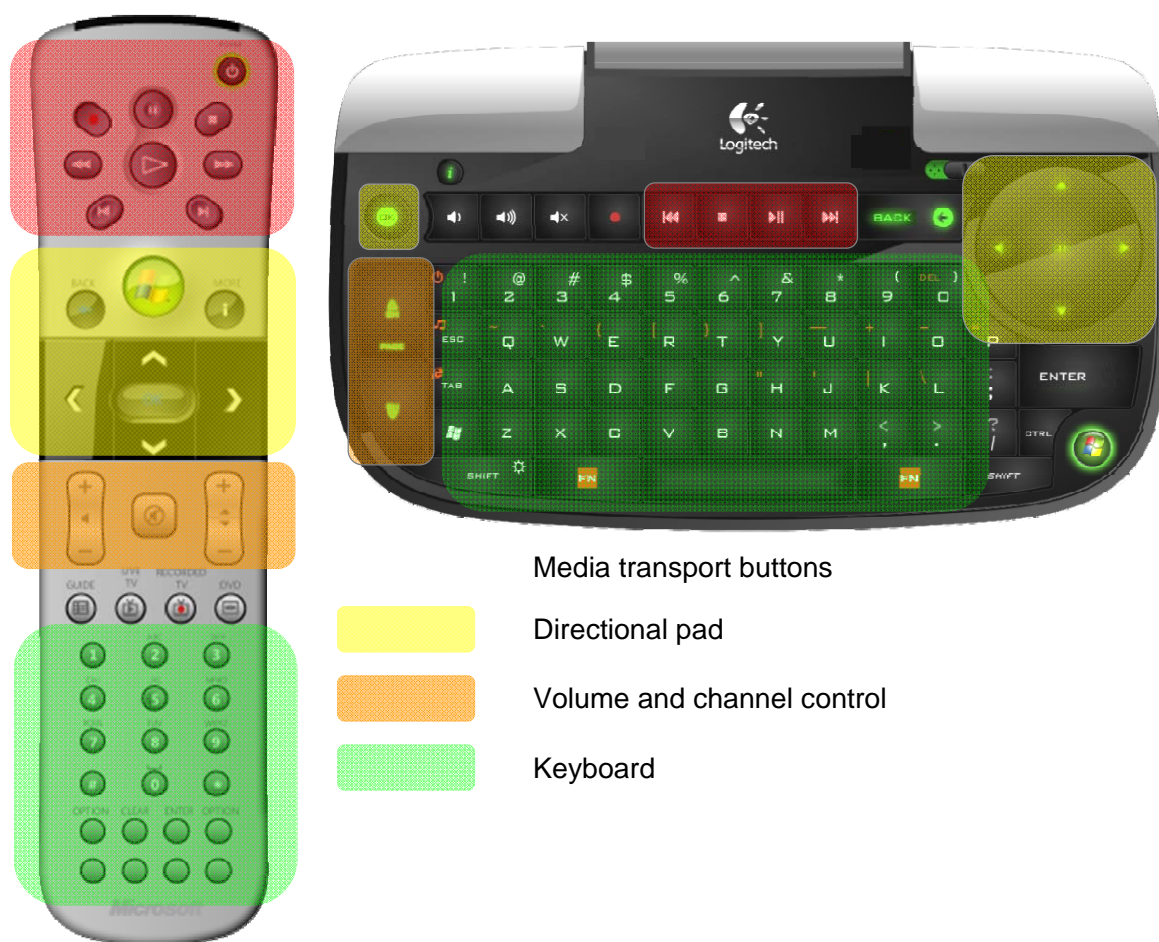


In media-remote mode, the ClickPad functions as a directional pad, perfect for navigating through long lists of photos or other media. And the ClickPad four directional arrows and OK icon glow in a striking green, which makes it easy to navigate in the dark.

Full Media Center Remote Control Capabilities

The diNovo Mini may not look like a typical remote used with computers running Microsoft Windows Media Center, but it is 100 percent compatible and gives up no functionality. It's also significantly more comfortable to use.

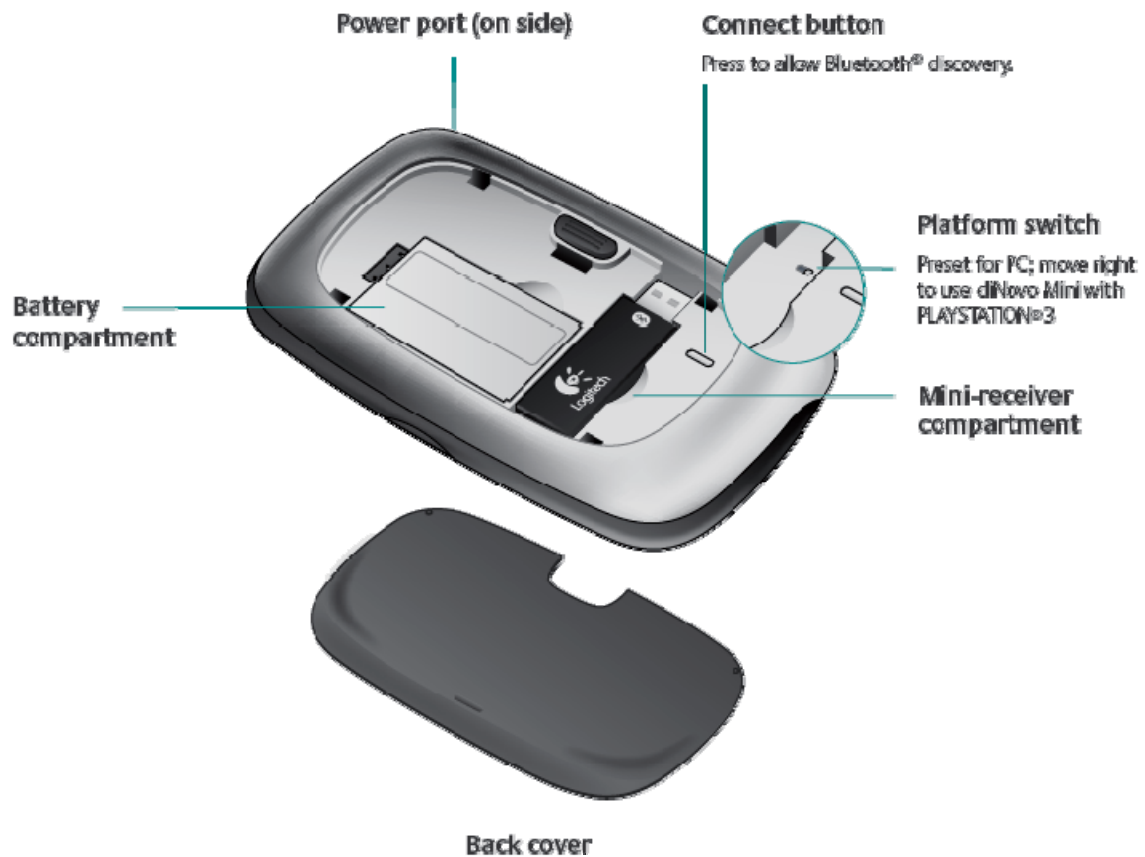
The following illustrations show the types of functionality the diNovo Mini provides.



Bottom View

Even the underside of the diNovo Mini is packed with features.

The rubberized bottom cover assures a non-slip grip. Inside, you'll find space for storing the mini-receiver when moving the diNovo Mini from one location to another. A red Connect button re-establishes Bluetooth wireless connectivity in the event of interruption. A small switch, located in the mini-receiver storage compartment adjusts the diNovo Mini from PC communications to full-featured operation with the Sony® Playstation®3. Finally, a small plastic retaining clip prevents the battery from inadvertently popping out.



1.4 Product Specifications

Logitech® diNovo Mini™
Palm-sized keyboard with media remote
and ClickPad



Price	\$149.99 (U.S.)
Dimensions	6" x 3.5" x 1.1" (with cover closed)
Weight	With battery and mini-receiver: 170- 175 g Receiver only: 7 g
Bluetooth® 2.0 Wireless	Long-range wireless control up to 30 feet
Battery	950 mAh lithium-ion battery Estimated battery life: Up to 30 days Fast-charge time: About 10 min for approximately one day of use. About 4 hours for up to 1 month of use
In the Box	Logitech diNovo Mini keyboard USB mini-receiver AC power adapter Lithium-ion battery CD-ROM with Logitech software Installation guide with comfort guidelines
System Requirements	PC running Microsoft® Windows Vista® or Windows XP™ Available USB port CD-ROM drive for software installation
Compatibility	Living-room PC, Sony® PlayStation®3 (PS3™) Apple® Macintosh® and Microsoft® Xbox 360™ are not supported
Warranty	3-year limited hardware warranty

Part 2: Setup and Use

2.1 Installation Tips

Installation takes just a minute or two and is achieved by following two steps:

- Connect the mini-receiver to an available USB port
- Install the software from the included CD

The diNovo Mini is now ready for use.

2.2 Using the diNovo Mini

The diNovo Mini operates in two distinct modes: as a touch pad and as a media remote. (Note: You can instantly, and temporarily, switch from media-remote to touch-pad mode by pressing the Fn button.)

Tips for operating in media-remote mode

1. Open the cover of the diNovo Mini.
 - Notice the battery and the Bluetooth green LED
2. Press the Windows Media Center button to launch the application.
3. Place your right thumb on the ClickPad in media-remote mode (green backlight) and your left thumb on the OK button
4. Go to the Music section using the ClickPad and press the OK button.
 - Notice the convenience of a two-handed-navigation for faster input
5. Use the ClickPad to navigate in your artist and album lists.
6. Scroll vertically using the Page + and Page – keys.
 - Notice the convenience of the Page +/- keys to accelerate navigation
7. Press a keypad letter to directly access an album or an artist (for example, press the U button to go directly to your U2 files).
 - Notice the convenience of a keypad for faster selection
8. Play an album.
9. With your left thumb, change the volume and mute using the three volume keys on the top row.
10. Pause, play again and go to the next track using the four media transport keys on the top row.
11. Press the Back key to navigate back to the menu and go to the Images + Videos section.
12. Continue playing with Media Center.

Tips for operating in touch-pad mode

1. Slide the mode switch to the right.
 - Notice the ClickPad backlight change (from green arrows to orange circle)
2. Put your right thumb on the ClickPad and use it to close Media Center by clicking the Close button on the top right corner of Media Center.
3. Press FN + Volume up (the Internet Explorer hotkey) to launch your browser.
 - Notice the convenient Left and Right FN keys, which allow you to quickly access additional features printed in blue
4. Position the cursor in the address bar of the browser and click OK button.
 - Notice that the OK button work in both modes
5. Use the keypad to type www.youtube.com. Press the Enter key.

- Notice how easy it is to type on a large thumb-keyboard compared to a smaller smart phone keypad.
- 6. Quickly scroll down and up using the Page + and Page – keys.
- 7. Use the ClickPad to select the video you want.
 - Notice you can do a mouse left-click either using the OK button or clicking on the ClickPad
- 8. Press the Back key to go back to a previous page.
Notice that the Back key works in both modes

Tips for using the diNovo Mini with iTunes

1. Press Fn + Volume down (the Media Player hotkey) to launch iTunes.
2. Select the Music sub-section of LIBRARY on the left panel.
3. Select the Cover Flow View (top right corner).
4. Press Ctrl + F to put the Cover Flow display in full screen.
5. Slide the mode switch to the left to enable the media-remote mode (green backlight).
6. Use the ClickPad to select an album by its cover.
7. Press Enter to start playing the album.
8. Use the ClickPad to select another album.
9. Press Enter to start playing the new album.
10. Press Esc key to come back to iTunes interface.
11. Close diNovo Mini cover and place it back on the coffee table.
 - Notice the backlight fade out
 - Notice that the design and small footprint creates efficiencies and adds style

Tips for using the diNovo Mini with PS3

1. Open the battery compartment and move the mode slider to the right to select the PS3 setting.
2. To pair the diNovo Mini with the PS3, go into the PS3 settings and follow the on-screen instructions to pair the two devices. Note that you do not need to insert the diNovo Mini receiver into the PS3.
3. The keypad buttons are automatically reassigned:
 - The Media Center button now functions as a PS3 launch button
 - The ClickPad functions as a touchpad (ideal for surfing the Internet) or as a D-pad (ideal for navigating PS3 menus), depending on preference.

2.3 What to Look For

The Logitech diNovo Mini features the same black and silver styling with soft-glow back-lighting as recent Logitech lifestyle products, such as the Logitech® diNovo Edge™ keyboard and Logitech® MX Air Rechargeable Cordless Air Mouse.

Here are aspects of the diNovo Mini that you'll discover during setup and use:

- Contoured shape minimizes corners and edges that could cause discomfort
- Palm-size design provides exceptional comfort
- Thumb-operated design makes access and control of your PC easier
- Thumb-oriented design puts all buttons in reach of thumbs to reduce possibility of fatigue
- Protective smoke-color cover keeps dust out

- Automatic power-down when cover is closed
- Rubberized bottom cover assures non-slip grip
- Gently sculpted keys ease typing without inadvertently pressing neighboring keys
- USB mini-receiver stores under the removable bottom plate to prevent loss
- Sleek design looks good in the living room; doesn't look like computer hardware
- Bluetooth wireless control needs no direct line of sight
- Mode slider instantly changes from living room keyboard to PC remote
- Backlighting changes from soft green to soft orange to indicate operating mode
- Integrated ClickPad provides full navigation, eliminates need for touch pad
- Easily navigates Windows Media Center multimedia assets
- Volume up/down and mute functions are directly accessible from dedicated keys
- Media functions (play, forward/back, etc.) are accessible from dedicated keys
- Mode changes key functions: Page Up/Down keys become Channel Up/Down
- Battery delivers a month of typical service on a single charge
- Keyboard and Bluetooth receiver are paired during manufacturing to speed installation
- Ambient lighting sensor activates backlighting in dark environments

