

PowerVideo Plus®

EverFocus Central Management Software
for Networked Video Devices Management

User's Manual



Copyright © EverFocus Electronics Corp.

Release Date: June, 2012



Copyright © 2012 EverFocus Electronics Corp.

All rights reserved. No part of the contents of this manual may be reproduced or transmitted in any form or by any means without written permission of the Everfocus Electronics Corporation.

EverFocus

12F, No.79, Sec. 1, Shin-Tai Wu Road,

Hsi-Chih, Taipei, Taiwan

TEL: +886 2 2698 2334

FAX: +886 2 2698 2380

www.everfocus.com.tw

June, 2012

Contents

CHAPTER 1 INTRODUCTION.....	1
1.1 SYSTEM REQUIREMENTS	1
1.2 INSTALLATION.....	2
1.3 MAIN SCREEN.....	3
CHAPTER 2 GETTING STARTED	4
2.1 ACCESSING THE POWERVIDEO PLUS	4
2.2 ADDING A DVR, MOBILE DVR OR AN IP CAMERA	5
2.3 CONFIGURING THE USER ACCOUNT	8
CHAPTER 3 LIVE VIEW	10
3.1 MATRIX VIEW	11
3.2 FLOATING MATRIX	13
3.2.1 ACTIVATING MULTIPLE MONITORS.....	13
3.2.2 CONFIGURING THE FLOATING MATRIX	14
3.3 DIGITAL ZOOM	16
CHAPTER 4 RECORDING.....	17
4.1 CHANGING THE RECORDING PATH	17
CHAPTER 5 PLAYING BACK.....	18
5.1 ARCHIVING RECORDINGS FROM THE DVRs / MOBILE DVRs TO THE LOCAL COMPUTER.....	19
5.2 QUICK SEARCH.....	20
CHAPTER 6 REMOTE PLAYBACK	21
CHAPTER 7 DYNAMIC E-MAPS	22
7.1 ACTIVATING THE DYNAMIC E-MAPS	23
7.2 CREATING A GROUP	24
7.3 CONFIGURING THE DYNAMIC E-MAPS.....	25
CHAPTER 8 RECORDING SCHEDULE (IP CAMERA).....	29
CHAPTER 9 ARCHIVING SCHEDULE (DVR).....	30
9.1 CHANGING THE AUTOMATICALLY ARCHIVED RECORDING PATH.....	31
CHAPTER 10 ALARM SETTINGS	32
10.1 ACTIVATING THE ALARM FUNCTION	32

10.2	CONFIGURING THE ALARM SERVER	33
10.3	ENABLING THE ALARM FUNCTION ON THE MAIN SCREEN	36
CHAPTER 11	PTZ CONTROL	37
CHAPTER 12	BACKUP UTILITY	38
CHAPTER 13	BANDWIDTH MONITOR.....	40

Chapter 1 Introduction

The PowerVideo Plus is a central management system (CMS) that allows you to remotely manage EverFocus' DVR, Mobile DVR or IP cameras connected on the LAN or WAN.

Supported Models:

All EverFocus branded products (few products are still in the process of being integrated).

Key Features:

- Simultaneously access any combination of IP, analog and mobile devices
- Up to 10 pages of 8 x 8 Live View Matrix screens with automatic timer based page flipping. See *3.1 Matrix View*.
- Unlimited number of monitors supported depending on PC's configuration. See *3.2 Floating Matrix*.
- Manual, scheduled and event based recording
- Supports multiple recording folders and round-robin over-write schema
- PTZ controls and digital zooming
- Bandwidth monitor
- Time / Event / Smart search
- User access management
- GPS tracking
- Dynamic E-Maps

1.1 System Requirements

	Minimum	Recommended
OS (32 / 64-bit)	Windows XP	Windows 7
CPU	Intel Core 2 Duo	Intel Core i3 or later
RAM	2 GB	4 GB
Graphic Card	Intel onboard graphic cards	AMD / NVIDIA DirectX 10 compliant graphic cards
Ethernet	10 / 100 Base-T Ethernet	1000 Base-T Ethernet
Hard Disk	50 MB for program install 500 GB or more recommended for video storage	

1.2 Installation

You have to download the PowerVideo Plus software and then install it in your computer. To download the PowerVideo Plus software, go to EverFocus's website (www.everfocus.com.tw) and follow the steps below.

1. Click **Download**, select **Software** and then click **PowerFocus**.
2. Extract the zip file to your computer.
3. Double-click **Setup.exe**, and follow the on-screen instructions.

Before using the PowerVideo Plus software, ensure to install the **Microsoft.NET Framework** software in your computer. In the PVPvx folder, double-click the **DotNetFX** folder, double-click **dotnetfx.exe** and follow the on-screen instructions.

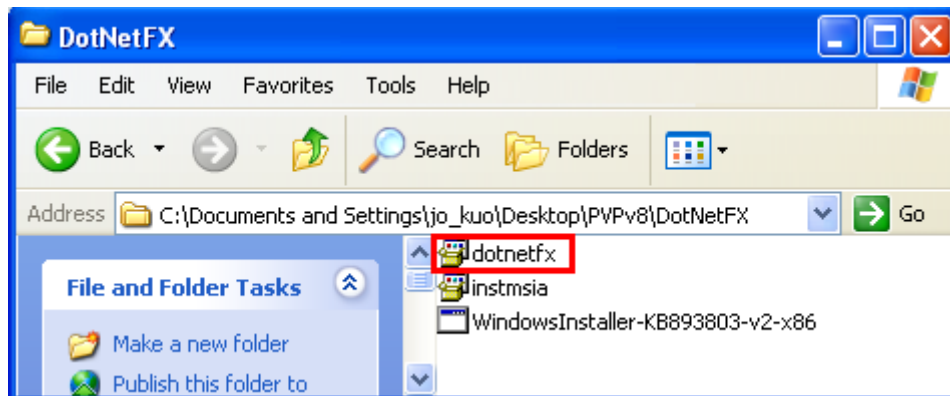


Figure 1-1

1.3 Main Screen

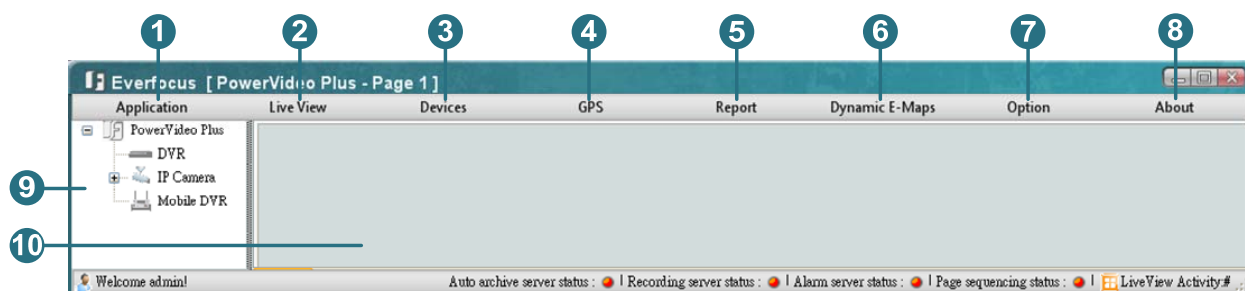


Figure 1-2

The controls on the Main Screen:

No.	Name	Description
1	Application	Click to log out or exit the system.
2	Live View	Click to modify the display of the Live View Matrixes. By default, the live view matrix is in single camera view. See 3.1 <i>Matrix View</i> .
3	Devices	Includes the functions related to Device Management, Remote DVR Archive, Playback and Snapshot List Search.
4	GPS	Click to start GPS tracking or playing back GPS data.
5	Report	Click to print out the alarm report.
6	Dynamic E-Maps	Click to start the Dynamic E-Maps function. See 7. <i>Dynamic E-Maps</i> .
7	Option	Click to set up the Storage Path, Recording Schedule, Archiving Schedule, User's Privileges Management, and the Language of the user interface. You may also start the Alarm Server, Auto Archive Schedule Server, Record Schedule Server, Backup Utility and Bandwidth Monitor.
8	About	Click to view the version of the PowerVideo Plus and its list of supported devices.
9	Device List	Displays the list of DVRs, Mobile DVRs or IP cameras currently configured.
10	Display Window	Displays the live view matrix.

Chapter 2 Getting Started

2.1 Accessing the PowerVideo Plus

Start the PowerVideo Plus software, the following login dialog box appears. Please type your user name, password and then click the **Login** button to enter the system. The default user name and password are **admin**.

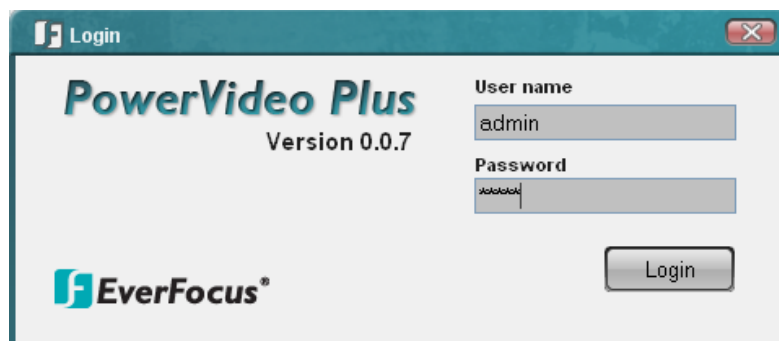


Figure 2-1

Note:

1. To change the language of the user interface, click **Option** (No.7, Figure 1-2) and click **Select Language**.
2. To change the username or password, click **Option** (No.7, Figure 1-2) and select **User Management**. See 2.3 *Configuring the User Account*.

2.2 Adding a DVR, Mobile DVR or an IP Camera

You need to add a DVR, Mobile DVR or an IP camera before start using the device related features. You can automatically search for EverFocus' devices on the network and then add them to the Device List or add EverFocus' devices manually.

To automatically search for EverFocus' devices on the network:

1. Click the **Devices** button (No.3, Figure 1-2) and click **Device Management**. The following dialog box appears.

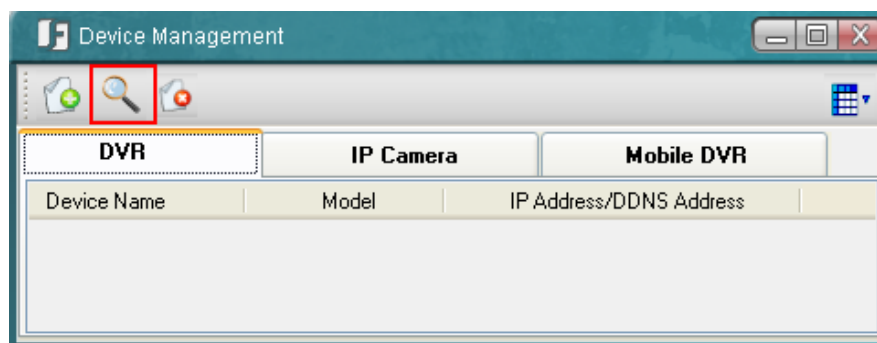


Figure 2-2

2. Click the **Auto Discover Device** button . The connected devices will be listed.

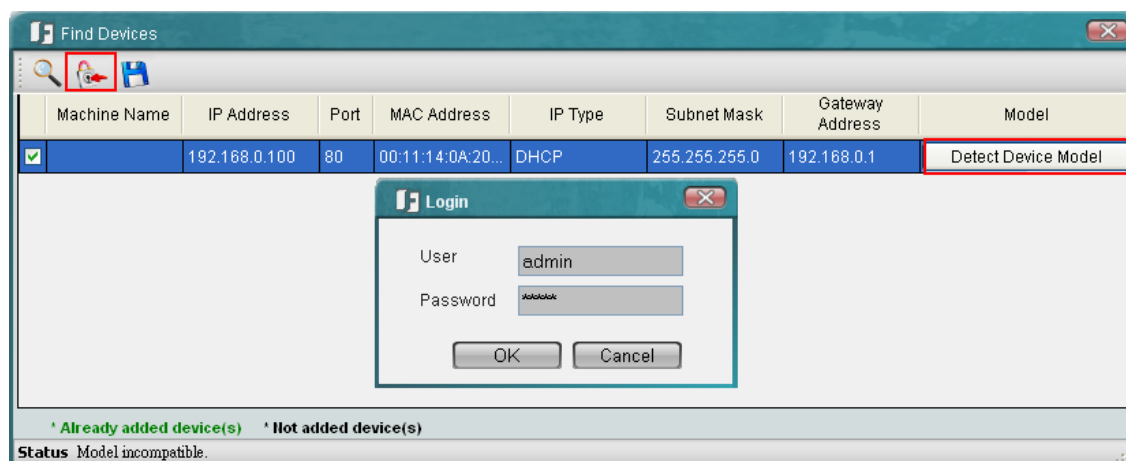



Figure 2-3


3. Select the desired device and click the **Login** button  to log in the device.

Note: You can login to multiple devices having the same User / Password combination at the same time by selecting multiple devices.

4. Click **Detect Device Model** to detect the device's model and firmware version.

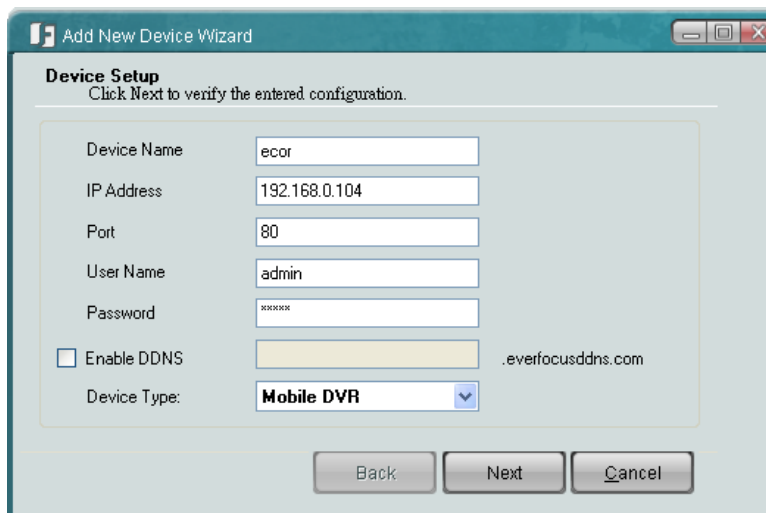
PowerVideo Plus will do a brief diagnostic to determine device compatibility at this time and provide a report on any issues it may have found.

5. Type a meaningful name in the Machine Name field to help you identify the device and then click  to save the settings.

Once all of your devices are added, click  to close the Find Devices window. The device list should now contain the list of the devices just added.

To manually add an EverFocus' device:

1. Click the **Add Device Wizard** button  in Figure 2-2. The following dialog box appears.



The dialog box is titled "Add New Device Wizard" and contains a "Device Setup" section. Below the title, it says "Click Next to verify the entered configuration." The form includes the following fields and options:

- Device Name:
- IP Address:
- Port:
- User Name:
- Password:
- ☐ Enable DDNS:
- Device Type: **Mobile DVR** (selected from a drop-down menu)

At the bottom of the dialog box are three buttons: "Back", "Next", and "Cancel".

Figure 2-4

2. Type the Device Name, IP Address, User Name and the Password of the IP device. Modify the default port if necessary.
3. Select the device type of the IP device from the Device Type drop-down list.

4. Click **Next**. The wizard will verify the IP device automatically.

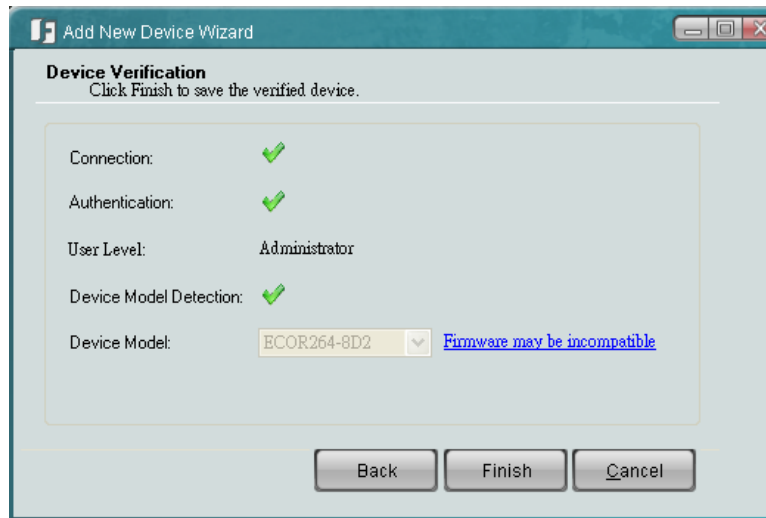


Figure 2-5

5. Click **Finish**.

2.3 Configuring the User Account

You can create multiple user accounts with different privileges. Click **Option** (No.7, Figure 1-2) and select **User Management**. The User Privileges dialog box appears.

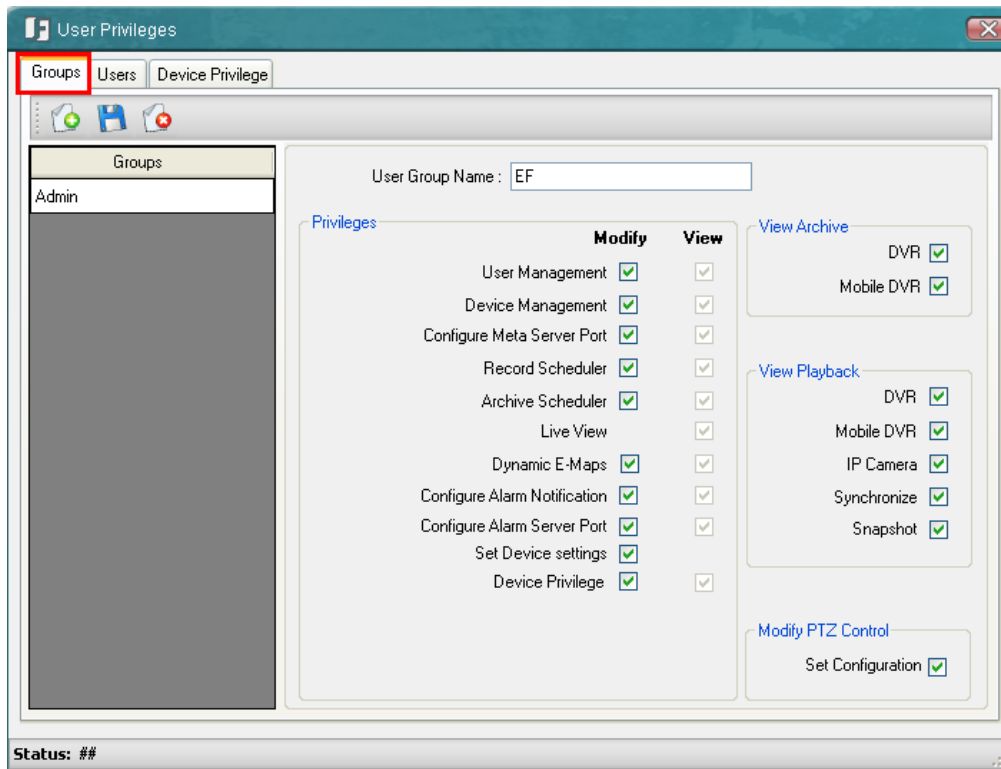










Figure 2-6

1. To create a group, click the **Groups** tab and click the **Add New Group** button .
2. Type a name for the new group and select the privileges for the new group.
3. Click the **Save Group** button  to save the settings.
4. To create a new user, click the **Users** tab and click the **Add New User** button .
5. Select the Group the user belongs to and enter the User name and the password in the Password and Confirm Password fields.
6. Click the **Save User** button  to save the settings.

To change the password:

1. Click the **Users** tab, select a group and then type the user name and password.
2. Type a new password in the Password and Confirm Password fields.
3. Click the **Save User** button  to save the settings.

To block specific cameras from a Group:

1. Click the **Device Privilege** tab, select a group and select a device. The related cameras will be displayed on the Allowed list.
2. Select a camera and use the   buttons to add / remove the camera to the Blocked list.
3. Click the **Save** button  to save the settings.

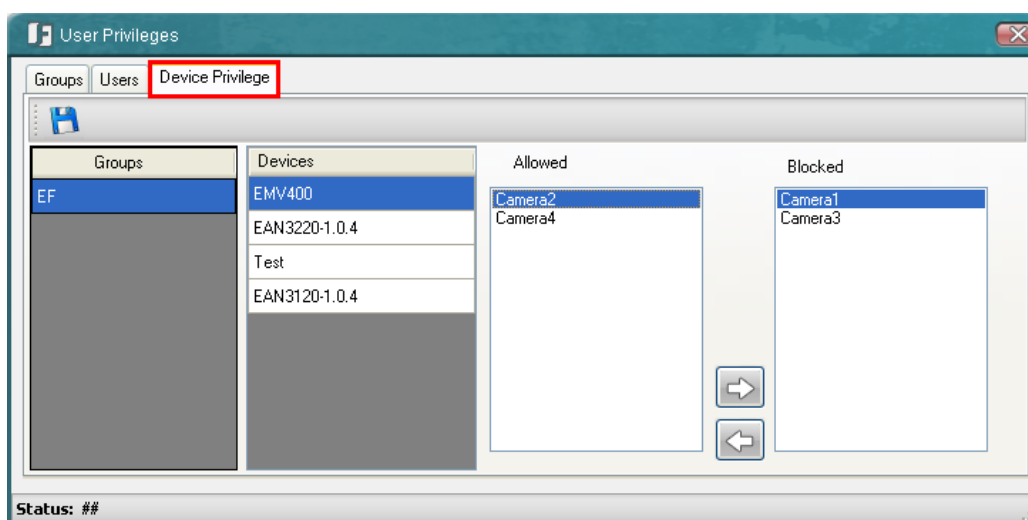


Figure 2-7

Chapter 3 Live View

You can manage the live video on the display window. Drag a camera from the Device List and drop it on the display window. Right-click the Live View window, the tool bar appears on the upper right corner.

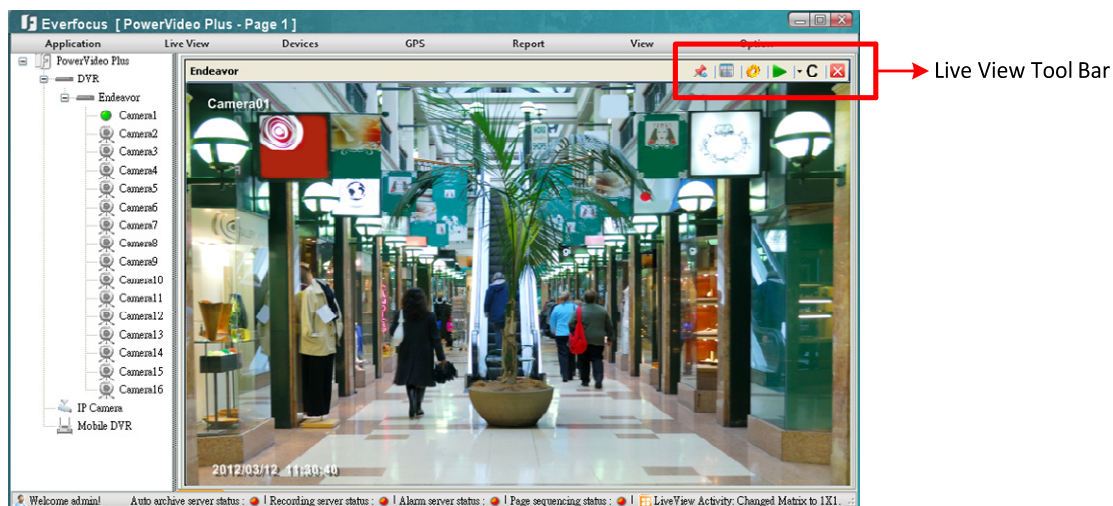




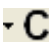





Figure 3-1

The Live View Tool Bar



Figure 3-2

No.	Name	Description
1	 Unpin	Unpin the live view from the Display Window. Click the button again to pin back.
2	 Take a Snapshot	Click to take and then print a snapshot.
3	 Configure Settings	Click to access the Web interface of the IP device for configuration.
4	 Quick Playback	Play back the videos from the predefined interval.
5	 Channel	Channels: Switch between channels from the DVR. Sub-stream: Click to enable / disable sub-stream. By default, the live view is displayed in sub-stream.
6	 Close Stream	Click to close the live view window.
7	 Start Record	Click to start / stop recording (IP camera only).
8	 Stream	Select a stream to display the live view (IP camera only).

3.1 Matrix View

The Matrix View allows you to monitor up to 64 cameras from EverFocus' DVR, Mobile DVR or IP cameras on the same screen. You can edit up to 10 pages of Matrix View in different matrix sizes.

1. On the Main Screen, click **Live View**, click **Go To** and select a page.

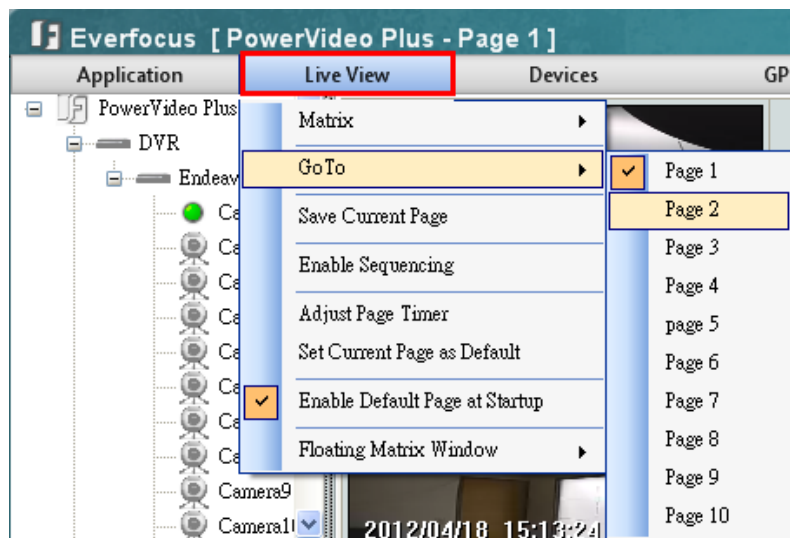


Figure 3-3

2. Click **Live View**, click **Matrix** and select a matrix size.

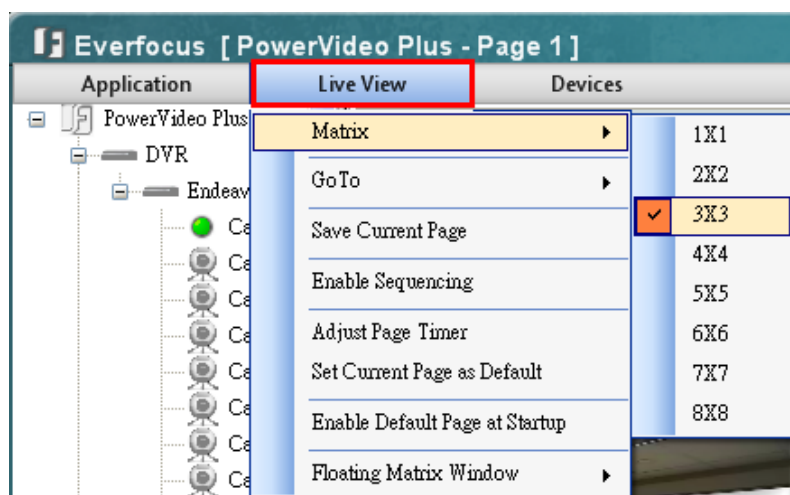


Figure 3-4

3. Drag and drop the cameras from the Device List to the desired squares on the Display Window.
4. Click **Live View** and click **Save Current Page** to save the settings.

5. Repeat **Step 1** to **Step 4** to edit another page.
6. To edit the name or the interval time of a page, click **Live View** and click **Adjust Page Timer**. Click on the page name to type a name or click on the time interval to set up an interval in second. The minimum interval is 30 seconds.

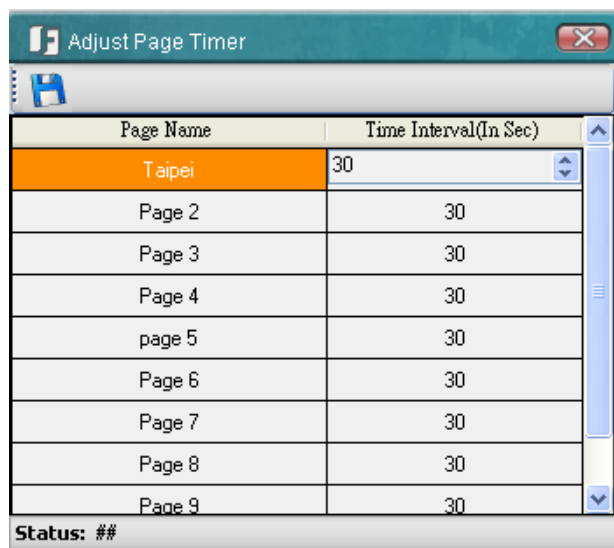


Figure 3-5

7. Click the **Save Page** button  to save the settings.

To use the **Sequencing** function, on the Main Screen, click **Live View** and click **Enable Sequencing**. The edited Matrix View pages will be displayed in sequence based on the time interval.

3.2 Floating Matrix

You can use the Floating Matrix function to create more screen space to display multiple channels on multiple monitors. The number of monitor is unlimited depending on PC's configuration. This function is useful for TV wall control.



Figure 3-6

3.2.1 Activating Multiple Monitors

Use Windows **Display Properties** to activate multiple monitors. Here we use Windows XP for example to illustrate the steps.

1. Right-click the desktop, click **Properties** and click the **Settings** tab. The Display Properties dialog box appears.

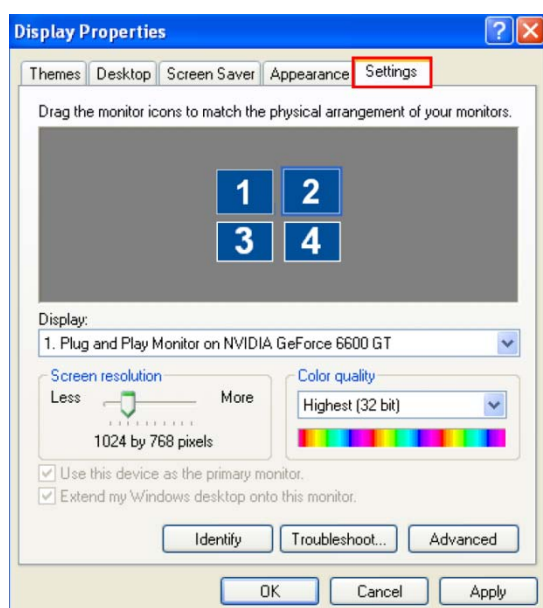


Figure 3-7


2. Click the **Display** list. If you do not see multiple monitors listed, check if your additional monitors are connected with the computer properly.
3. Select the primary monitor from the list, and select **Use This Device as the Primary Monitor**.
4. Select additional monitors from the list, and select **Extend my Windows desktop onto this monitor** for each monitor.
5. Click **Identify**. Windows XP displays a large number to identify your monitors. Drag and drop the monitor icons to match the physical arrangement of your monitors.
6. Click **OK**.

3.2.2 Configuring the Floating Matrix

You can set up multiple Floating Matrix windows to display the matrix live view on additional monitors. Each Floating Matrix window can be set up with up to 64 channels from Everfocus' DVR, Mobile DVR or IP cameras. You can edit up to 10 pages of Matrix View in different matrix sizes for each Floating Matrix window.



Figure 3-8

1. On the Main Screen, click **Live View**, click **Floating Matrix Window** and click **Add New Floating Window**. The above window appears.
2. Type a name for the Floating Matrix window in the name field .
3. Click to select a page.
4. Click to select a matrix size for the selected page.
5. Drag and drop the cameras from the Device List on the Main Screen to the desired squares on the Floating Matrix Window.
6. Click the **Settings** button  and select **Save Current Page**.
7. Repeat **Step 3** to **Step 6** to edit another page.
8. To edit the interval time of a page, click the **Settings** button and select **Adjust Page Timer**. Click on the page name to type a name or click on the time interval to set up an interval in second. The minimum interval is 30 seconds.

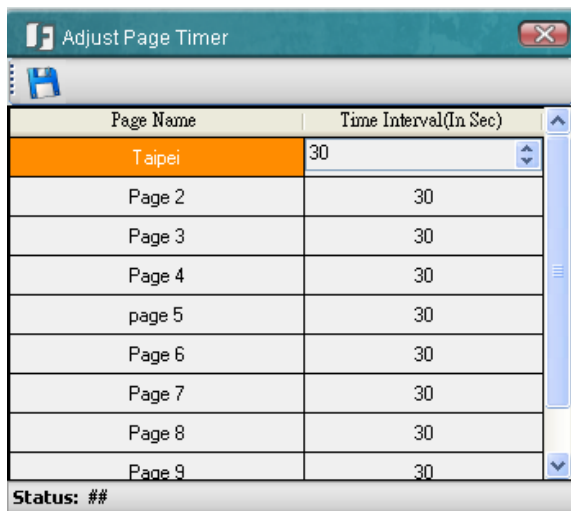


Figure 3-9

9. Click the **Save Page** button  to save the settings.

To use the **Sequencing** function, click the **Settings** button and click **Enable Sequencing**. The edited Matrix View pages will be displayed in sequence based on the time interval.

3.3 Digital Zoom




You can zoom in / out the camera live view through the PowerVideo Plus. On the camera live view, click the **Unpin** button  (No.1, Figure 3-2) to unpin the camera live view from the Display window. Click the **Show Digital Zoom** button  on the right edge of the camera live view, a separate live view window with **Zoom In** and **Zoom Out** buttons appears. Click the **Zoom In** / **Zoom Out** button to zoom in / out the camera live view.



Figure 3-10

Chapter 4 Recording

You can record live videos from the connected IP cameras. Click the **Start Record** button  on the Live View Tool Bar to start / stop recording the camera live view.

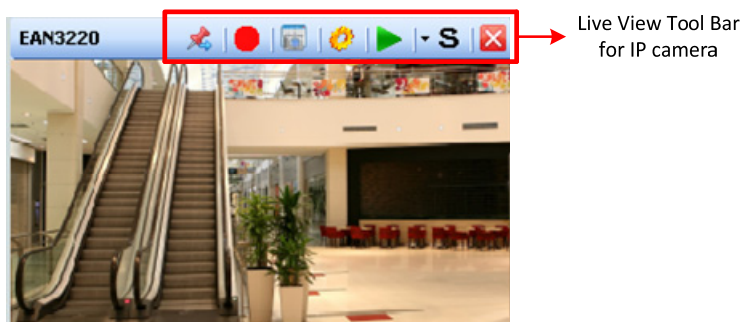


Figure 4-1

4.1 Changing the Recording Path

By default, the live view recordings of the IP cameras are saved at **C:\Program Files\Everfocus\PowerVideo Plus**. Follow the steps below to change the recording path.

1. On the Main Screen, click **Option** and click **Configure Record Storage Path**.

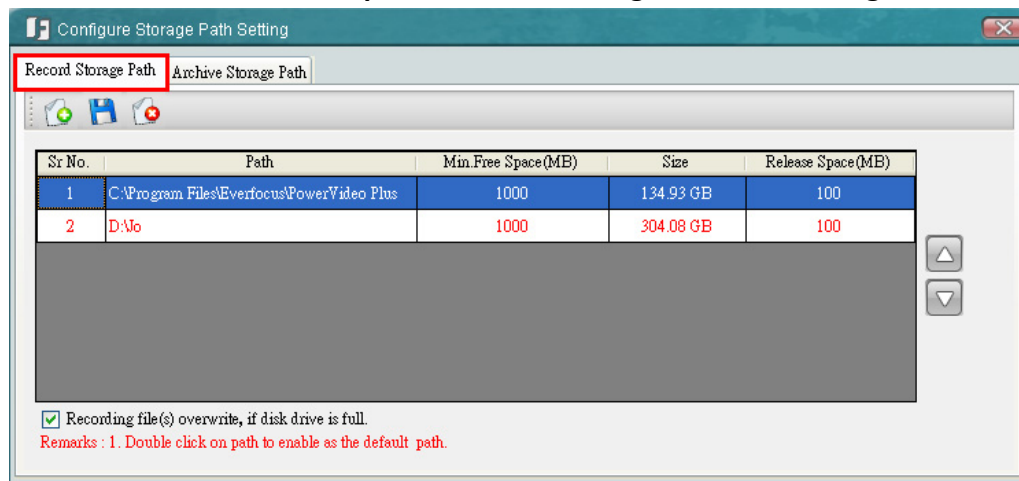



Figure 4-2

2. Click the **Record Storage Path** tab, click the **Add New Path** button  and select a storage location. The new path will be listed in the storage path list.
3. Double click on the added path to enable it as the default path. The color of the wordings will change to red to indicate the path has set up as the default path.
4. You can optionally enable **Recording file (s) overwrite, if disk drive is full**.
5. Click the **Save** button to save the settings.

Chapter 5 Playing Back

You can play back the recordings stored in your computer using EverFocus' **EFPlayer** with enhanced features. For DVR / Mobile DVR users, you will have to archive the recordings to your computer before using the EFPlayer.



Double-click the **EFPlayer icon**, click the **Load Files** button to load the recording file and then click the **Play** button to play back the recording.

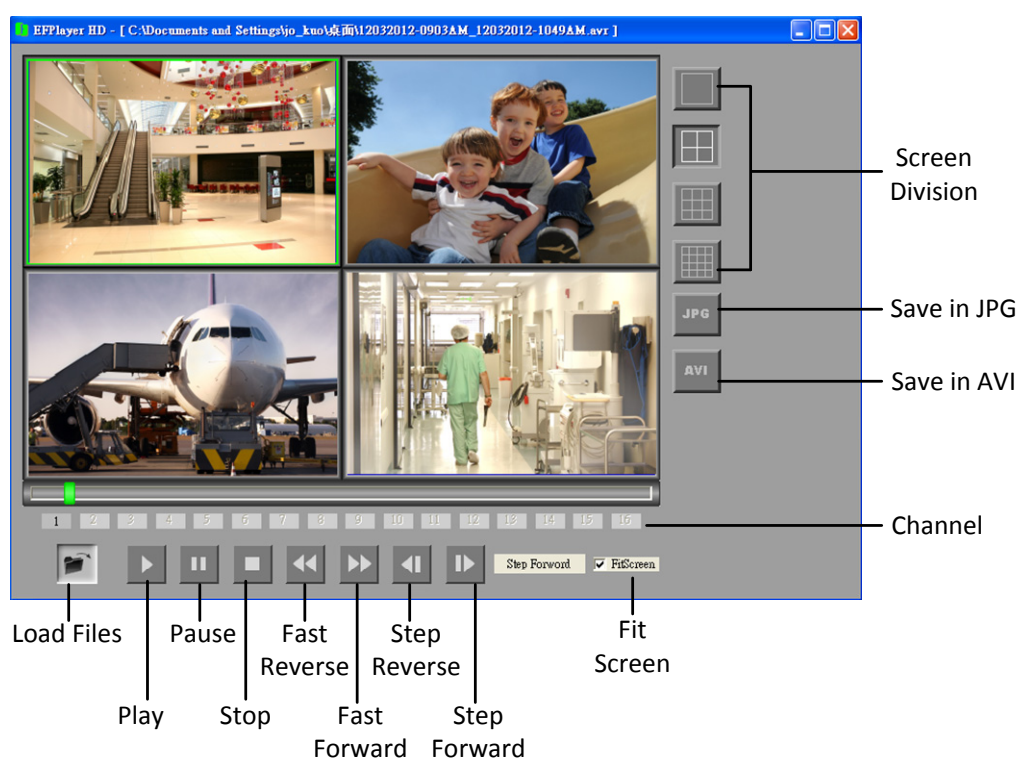


Figure 5-1

To turn on / off the camera view for playing back, click the number of channel button.

To display the camera view to fit the screen size on the Screen Division, enable **Fit Screen**.

To save a video image in JPG format, click the **JPG** button.

To save a video file in AVI format, click the **AVI** button.

To display the next / previous frame, click the **Step Forward** / **Step Reverse** button.

5.1 Archiving Recordings from the DVRs / Mobile DVRs to the Local Computer

You can manually or automatically archive the recordings from the DVRs / Mobile DVRs to your local computer for playing back the recordings using EverFocus' EFPlayer. For automatically archiving the recordings from the DVR, see *Archiving Schedule (DVR)* in Chapter 9.

1. To manually archive the recordings from the DVR, on the Main Screen, click **Devices**, click **Archive** and select **DVR** or **Mobile DVR**. The following dialog box appears.

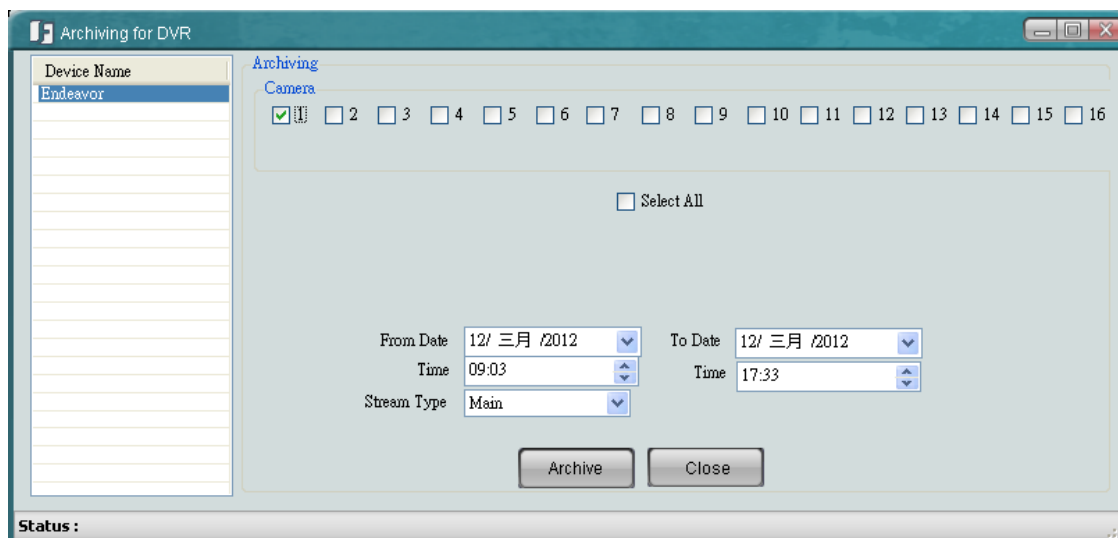


Figure 5-2

2. Select a device, select the desired cameras, select the time period and the stream type.
3. Click **Archive** and then select a storage path for the recordings. The recordings will be saved in **.avr** format.

5.2 Quick Search

Quick Search is a very useful tool for searching and playing back IP camera recordings stored in the local computer.

On the Main Page, click **Devices**, click **Playback** and select **IP Camera**. Select the desired device, date and time, recording type and file type. Click the **Search** button and the desired recordings will be listed. Select a desired recording and click the **Play** button.

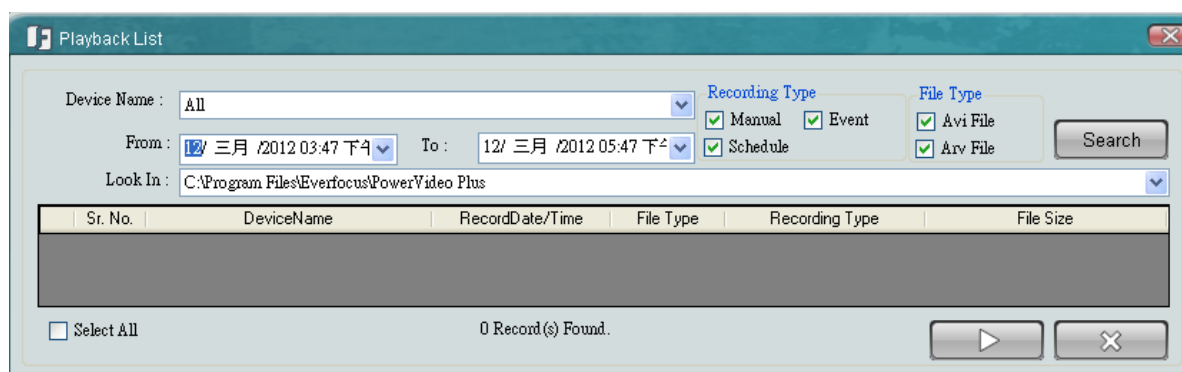


Figure 5-3

Chapter 6 Remote Playback

You can remotely play back recordings from the DVRs / Mobile DVRs using the internal built-in player.

1. On the Main Page, click **Devices**, click **Playback** and select **DVR** or **Mobile DVR**.

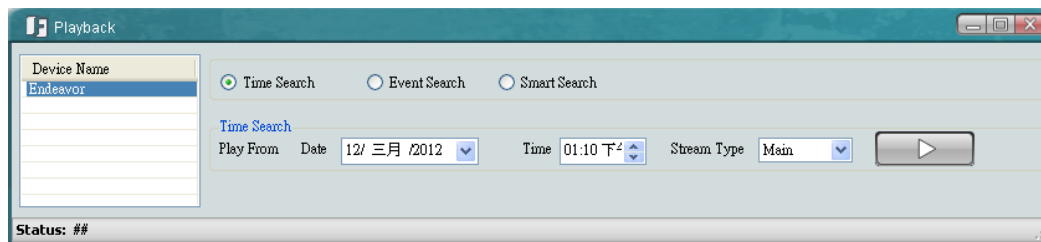


Figure 6-1

2. Select a device and select a search type to search for the desired recordings.

Time Search: Search the recordings with a specific date, time and stream type.

Event Search: Search the recordings with the selected event type: alarm or motion.

Smart Search: This feature is only available on DVR devices. Smart Search allows you to search the recordings with unattended or missing objects in a period of time. Click the **Show Grid** button to specify multiple regions for unattended or missing objects.

3. Click the **Play** button to play back the desired recording.

Chapter 7 Dynamic E-Maps

You can configure a dynamic E-Map alert to lay out the locations of triggered cameras and alarms within a floor plan. When a motion, video loss or input trigger is detected, the color of the camera icon will turn red or yellow for alert (red for video loss and yellow for triggered cameras and alarms). You can also right-click the camera icon and select **View Camera** to see its live view. By doing so, the camera icon will turn green.

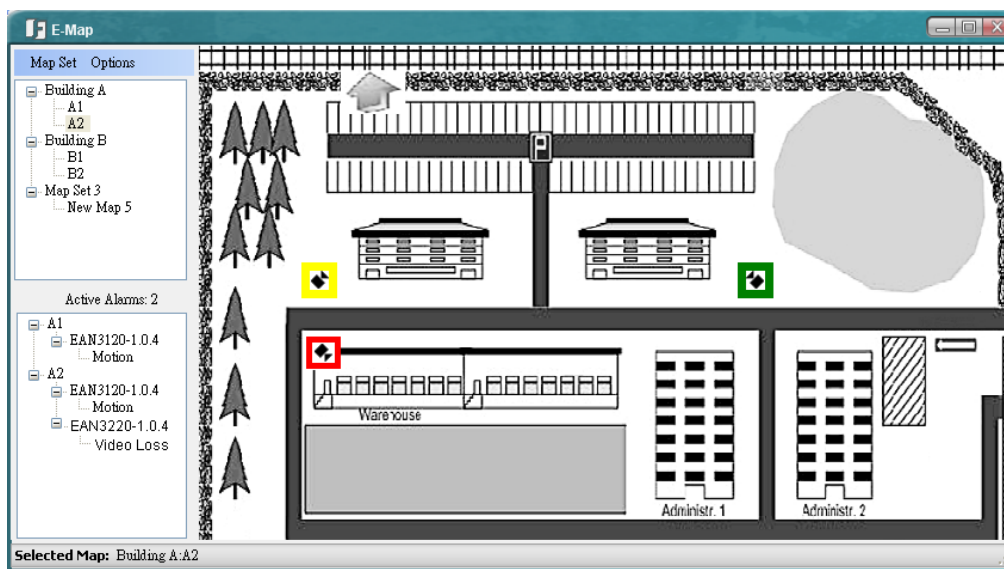



Figure 7-1

You have to enable the Alarm Server for using the Dynamic E-Maps function. On the Main Screen, click **Option** and click **Start Alarm Server**. The Alarm Server  will be minimized to the system tray.

7.1 Activating the Dynamic E-Maps

You have to configure the settings on the Web interfaces of the DVR / Mobile DVR or IP cameras, and then configure the protocol and port settings for the Alarm Server. Here we take DVR as an example to demonstrate the steps.

- On the **Web interface** of the DVR:
 - a. Check the **Enable** box and enable the **Network Alarm** function on the Motion, Video Loss or Alarm / Event settings page.

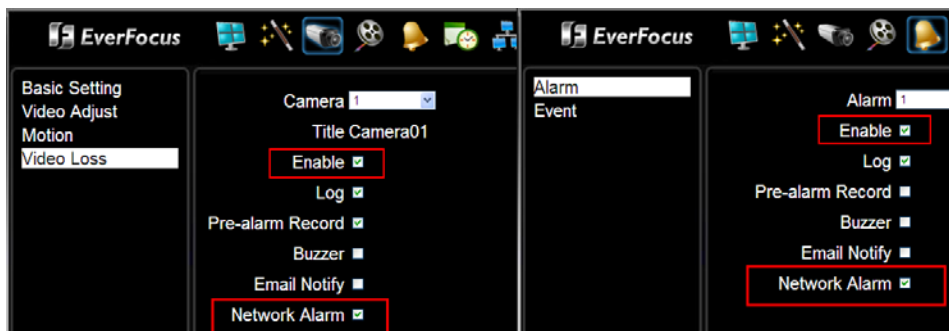


Figure 7-2

- b. On the Network settings page, click **Alarm Server**, type the IP address of the local computer, select a Protocol and enter 1600 in the Port field. Type a 10-digit network ID for network identification.

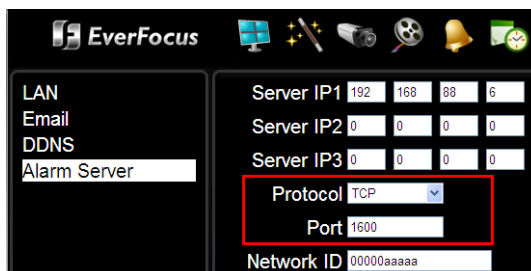


Figure 7-3

- On the **Alarm Server**:
 - a. Right-click the Alarm Server icon, select **Protocol** and select a protocol type matching the one you've set up on the DVR.
 - b. Right-click the Alarm Server icon and select **Configure Port**. Type 1600 in the Alarm Server Port field and click the **Save** button.
 - c. Right-click the Alarm Server icon and click **Restart Alarm Server**.

7.2 Creating a Group

You need to create a group before start using the dynamic E-Maps.

1. On the Main Screen, click the **Dynamic E-Maps** button, the E-Map window appears (Figure 7-1).
2. To create a group to include multiple E-Maps, click the **Map Set** button and click **New Map Set**. Right-click on the created group and select **Rename** to rename it.
3. To add an E-Map to the created group, right-click on the created group and click **Add Map**. Right-click on the created map and select **Rename** to rename it. You can repeat this step to add multiple E-Maps.
4. To locate the E-Map image, drag and drop the E-Map image on the right-side of the E-Map window. Or right-click on a created E-Map and click **Load Image File**.
5. To locate the cameras on the E-Map, drag and drop the cameras from the Device List (No.9, Figure 1-2) to the created E-Map. You can change the direction of the camera icon by right-clicking on the camera icon and click **Rotate Right** / **Rotate Left**.

7.3 Configuring the Dynamic E-Maps

You can further configure the Dynamic E-Maps. When an event occurs or an alarm is triggered, the Dynamic E-Maps will pop up a window for live view, SOP panel or camera list (contains the triggered cameras / alarms). Click the **Options** button on Figure 7-1. The Alarm Option dialog box appears.

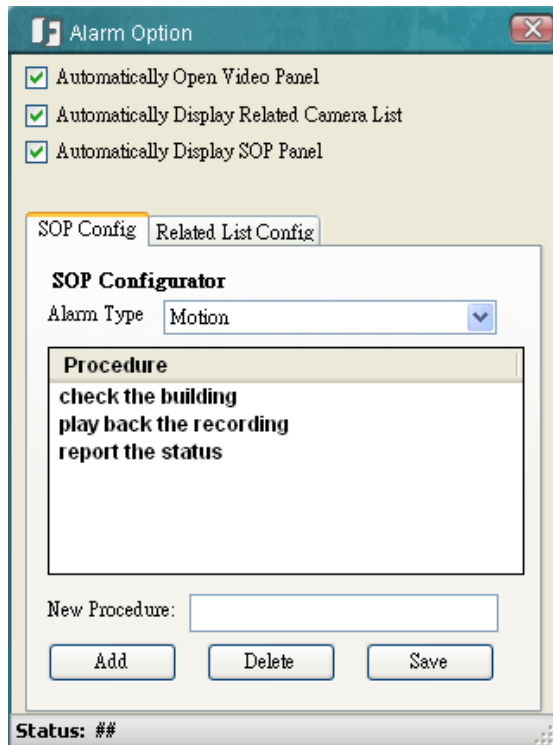


Figure 7-4

To pop up the live view windows:

Enable the **Automatically Open Video Panel**, the following live view window will pop up when an event occurs or an alarm is triggered.



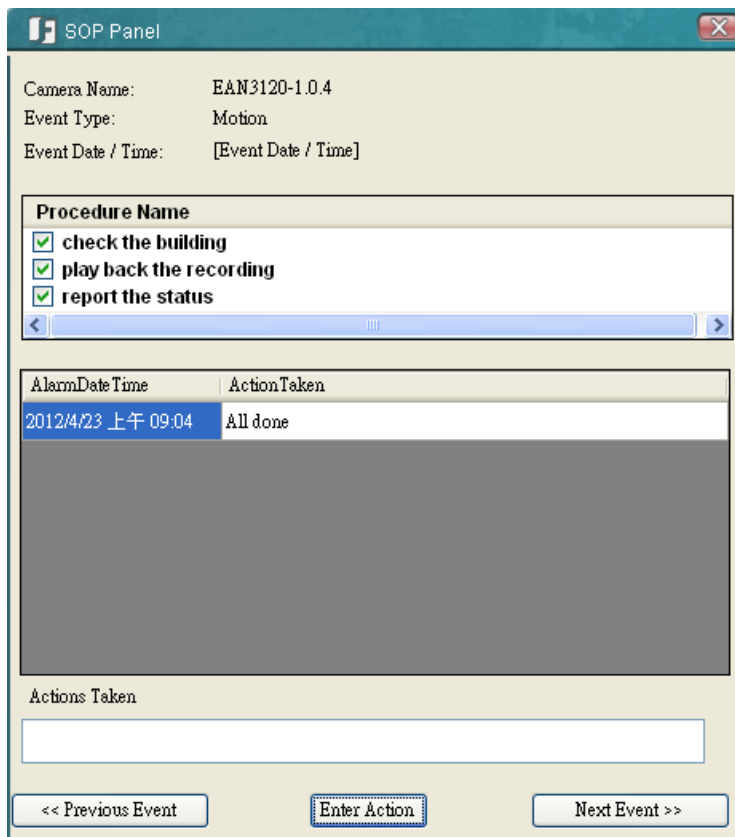
Figure 7-5

To pop up an SOP panel:

The SOP panel is designed to inform the operators for what procedures to take when an event occurs or an alarm is triggered.

1. Enable **Automatically Display SOP Panel**.
2. Click the **SOP Config** tab and select an alarm type from the Alarm Type drop-down list.
3. Type the procedures in the New Procedure field and click **Add**.
4. Click **Save**.

When an event occurs or an alarm is triggered, the following SOP Panel will pop up. You can check the procedures to take and enter what actions you have done in the Actions Taken field and then click the **Enter Action** button. You can also click the **Previous Event** or the **Next Event** buttons to check the previous or next events.



SOP Panel

Camera Name: EAN3120-1.0.4
 Event Type: Motion
 Event Date / Time: [Event Date / Time]

Procedure Name

- ☒ check the building
- ☒ play back the recording
- ☒ report the status

AlarmDate Time	ActionTaken
2012/4/23 上午 09:04	All done

Actions Taken

<< Previous Event Enter Action Next Event >>

Figure 7-6

To pop up a related camera list:

You can configure the Dynamic E-Maps to pop up a related camera list which includes the triggered cameras or alarms when an event occurs or an alarm is triggered.

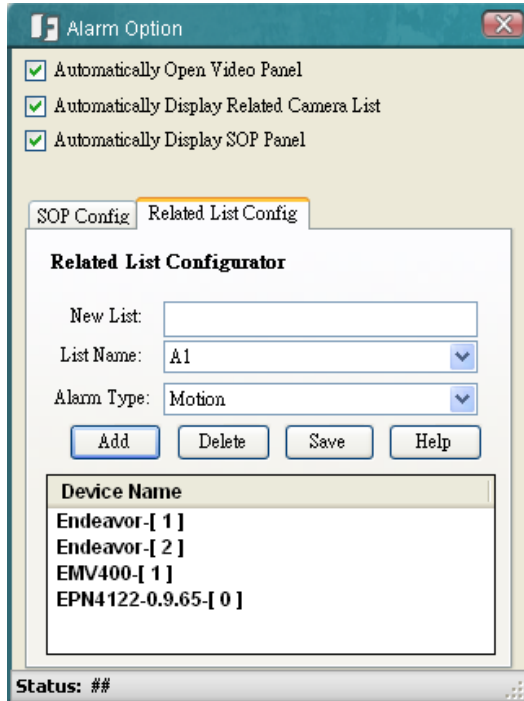


Figure 7-7

1. Enable **Automatically Display Related Camera List** and click the **Related List Config** tab.
2. Type a name in the New List field and click the **Add** button. The created list name will be added to the List Name.
3. Select an alarm type from the Alarm Type drop-down list.
4. Drag and drop the cameras from the Device List (No.9, Figure 1-2) to the Device Name box.
5. Click **Save**.

When any of the cameras / alarms included in the created list has been triggered, the created camera list will pop up. Select a model or select all, and click the **View Selected** button, the live view windows of the selected models will pop up. Click the **Record Selected** / **Stop Recording** buttons, the live view of the selected IP cameras will be recorded to the setup recording path.

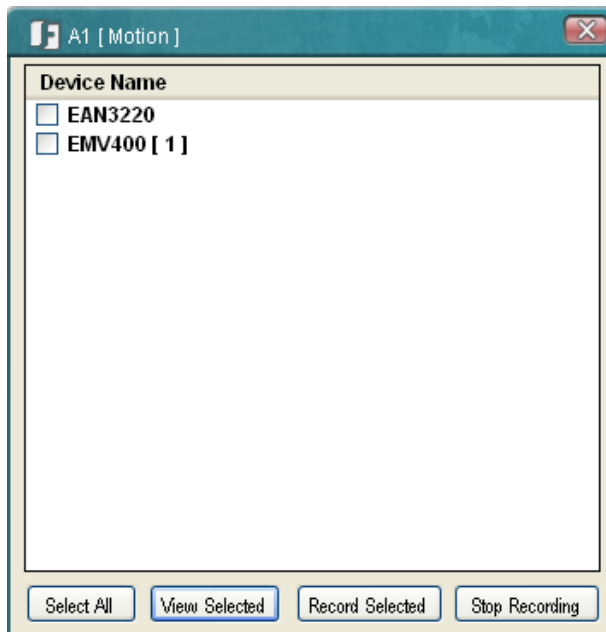


Figure 7-8

Chapter 8 Recording Schedule (IP Camera)

You can set up a weekly recording schedule for the connected IP devices. On the Main Screen, click **Option** and click **Record Scheduler (IP Camera)**, the following dialog box appears.

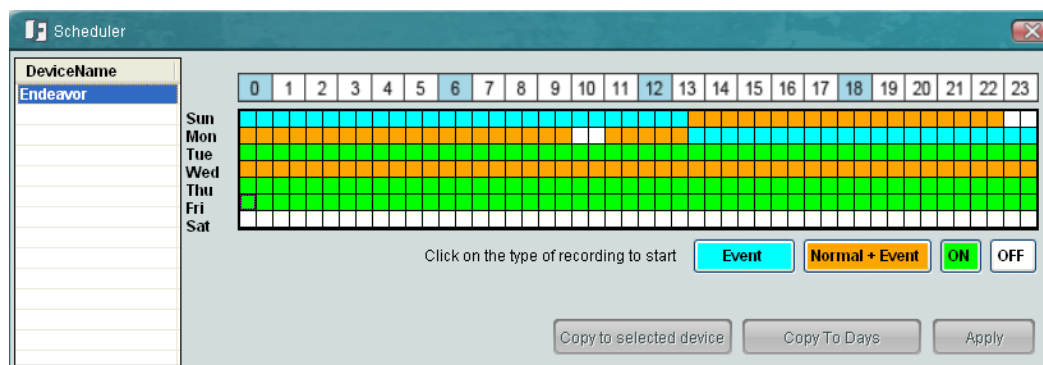


Figure 8-1

1. Select a device. Click to select a recording type, move the cursor to a square on the timeline, and then click. The clicked square and the squares behind will be set up as the recording type you selected.

Event: Event recordings only.


Normal + Event: Continuous and Event recordings.

ON: Continuous recordings.

OFF: No recording during scheduled time period.

2. Click **Apply**.

Tip: You can click the **Copy To Days** button to apply the same settings to the desired days, or click the **Copy to Selected Device** button to apply the same settings to the selected devices.

To enable the Recording Schedule, on the Main Screen, click **Option** and click **Start Record Scheduler**. The Recording Schedule Server  will be minimized to the system tray.

By default, the recordings are saved at **C:\Program Files\Everfocus\PowerVideo Plus**. To change the recording path, please refer to *4.1 Changing the Recording Path*.

Chapter 9 Archiving Schedule (DVR)

You can set up a weekly archiving schedule to automatically archive the recordings from the DVR / Mobile DVRs. On the Main Screen, click **Option** and click **Archive Scheduler (DVR)**, the following dialog box appears. For details on manually archiving recordings, see *5.1 Archiving Recordings from the DVRs / Mobile DVRs to the Local Computer*.

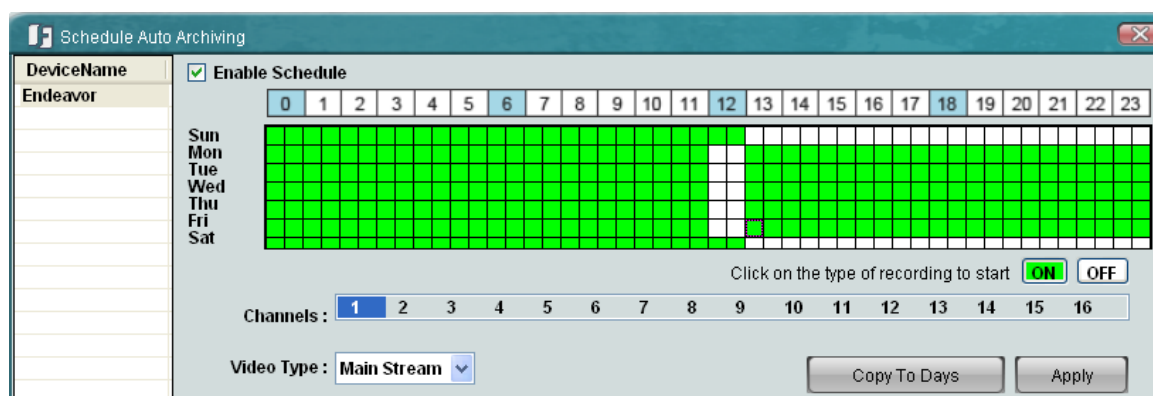



Figure 9-1

1. Select a device, enable **Enable Schedule**, select the desired channels and select a stream type from the Video Type drop-down list.
2. Click **ON** **OFF** to select a recording type, move the cursor to a square on the timeline, and then click. The clicked square and the squares behind will be set up as the recording type you select.
ON: Continuous recordings.
OFF: No recording during scheduled time period.
3. Optionally click the **Copy To Days** button to apply the same settings to other timelines.
4. Click **Apply**.

To enable the auto Archiving Schedule, on the Main Screen, click **Option** and click **Start Auto Archive Server**. The Auto Archive Schedule Server  will be minimized to the system tray.

9.1 Changing the Automatically Archived Recording Path

By default, the automatically archived recordings are saved at **C:\Program Files\Everfocus\PowerVideo Plus**. Follow the steps below the change the automatically archived recording path.

1. On the Main Screen, click **Option** and click **Configure Record Storage Path**.

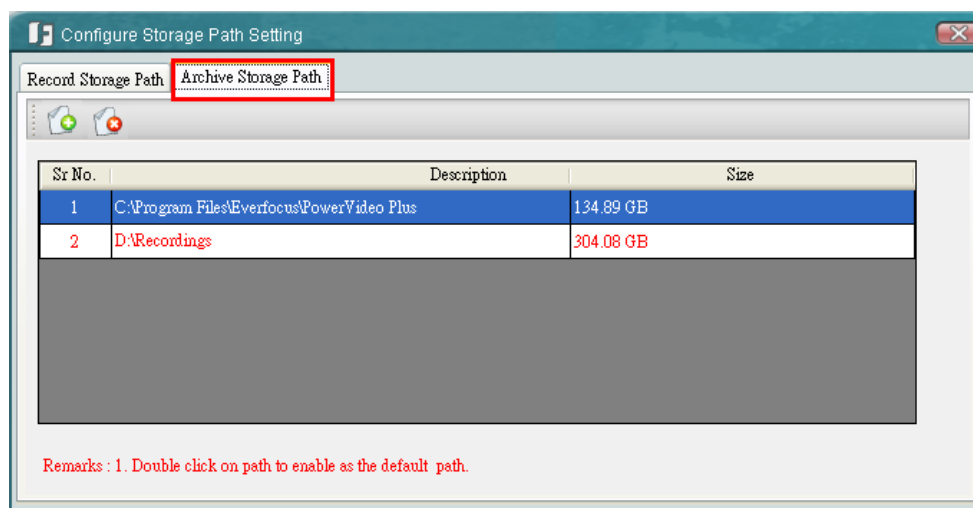




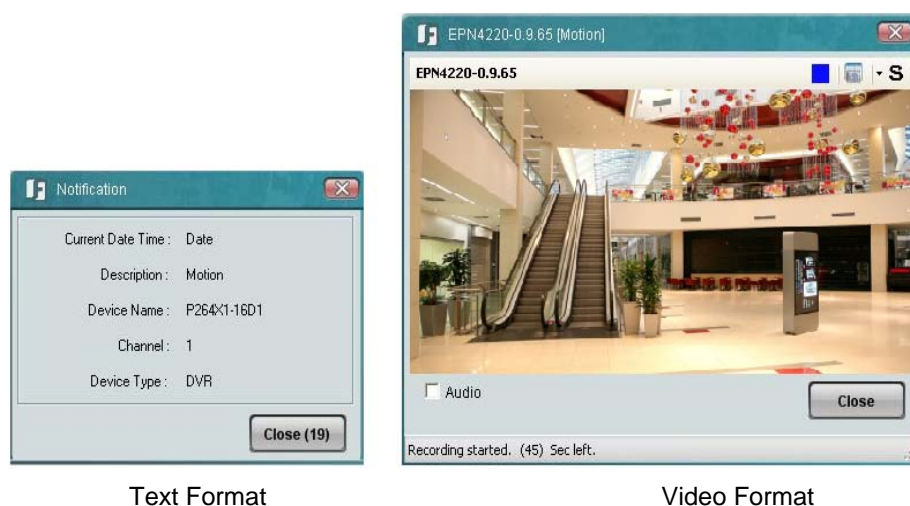
Figure 5-3

2. Click the **Archive Storage Path** tab, click the **Add New Path** button  and select a storage location. The new path will be listed in the storage path list.
3. Double click on the added path to enable it as the default path. The color of the wordings will change to red to indicate the path has set up as the default path.

Chapter 10 Alarm Settings

You can configure the alarm settings for the connected cameras. When an event occurs or the alarm is triggered, on the Main Screen, the color of the camera icon will change for alert. Or you can set up to pop up a notification window in text or video format. You can also enable the alert sound or E-mail alert when a notification occurs.

You have to enable the Alarm Server for using the Alarm function. On the Main Screen, click **Option** and click **Start Alarm Server**. The Alarm Server  will be minimized to the system tray.



Text Format


Video Format

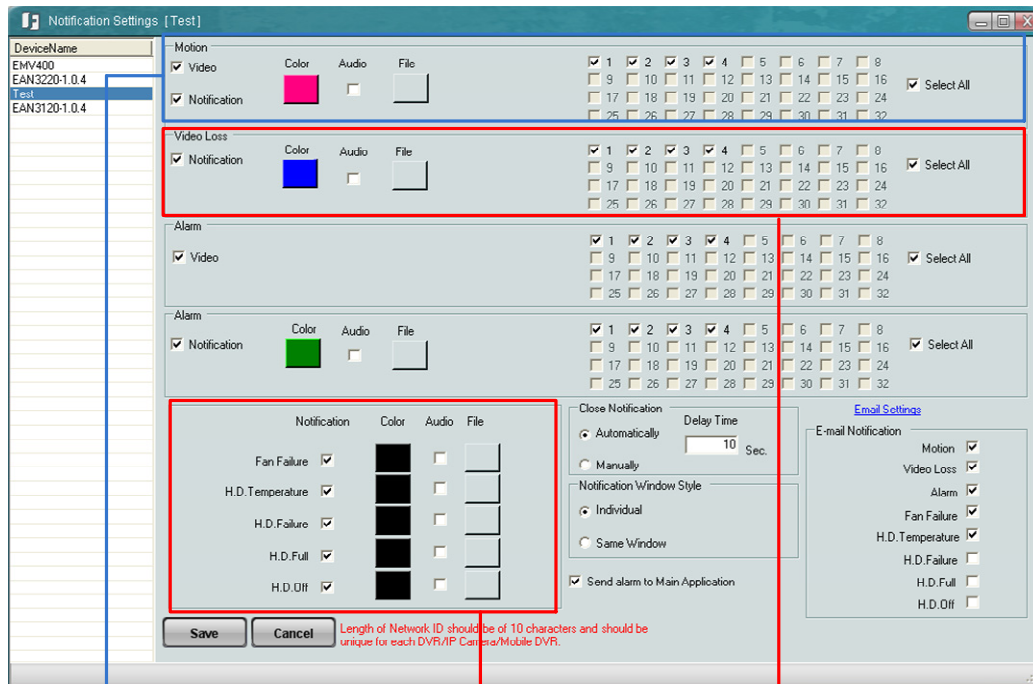
Figure 10-1

10.1 Activating the Alarm Function

You have to configure the settings on the Web interfaces of the DVR / Mobile DVR or IP cameras, and then configure the protocol and port settings for the Alarm Server to activate the alarm function. For details, please refer to *7.1 Activating the Dynamic E-Maps*.

10.2 Configuring the Alarm Server

Left-click the Alarm Server , select **Notification Settings** and type the ID and password. The following Notification Settings dialog box appears. The dialog box may look a bit different among the DVRs, Mobile DVRs and IP cameras.



Not available for Mobile DVRs

Not available for IP cameras

Figure 10-2


【Motion】

Select a device and select the desired cameras for the following settings. Note this function is not available for Mobile DVRs.

Video: Enable to pop up a notification window in video format when a motion event occurs.

Notification: Enable to pop up a notification window in text format when a motion event occurs. You can set up the text color by clicking **Color**.

Audio: Enable to set up an alert sound. Click the **File** button to import an audio file in WAV, WMA, MP3 or MID formats to alert the operator when motion is detected.

Recording: Enable to record the live view when a motion event occurs. You can set up the recording time by clicking the  button. Note this function is only available for IP cameras.

【Video Loss】

Select a device and select the desired channels for text notification settings. Note this function is not available for IP cameras.


Notification: Enable to pop up a notification window in text format when a video loss event occurs. You can set up the text color by clicking **Color**.

Audio: Enable to set up an alert sound. Click the **File** button to import an audio file in WAV, WMA, MP3 or MID formats to alert the operator when video loss is detected.

【Alarm】

Select a device and select the desired cameras for the following settings:

Video: Enable to pop up a notification window in video format when an alarm is triggered.

Recording: Enable to record the live view when an alarm is triggered. You can set up the recording time by clicking the  button. Note this function is only available for IP cameras.

Notification: Enable to pop up a notification window in text format when an alarm is triggered. You can set up the text color by clicking **Color**.

Audio: Enable to set up an alert sound. Click the **File** button to import an audio file in WAV, WMA, MP3 or MID formats to alert the operator when the alarm is triggered.

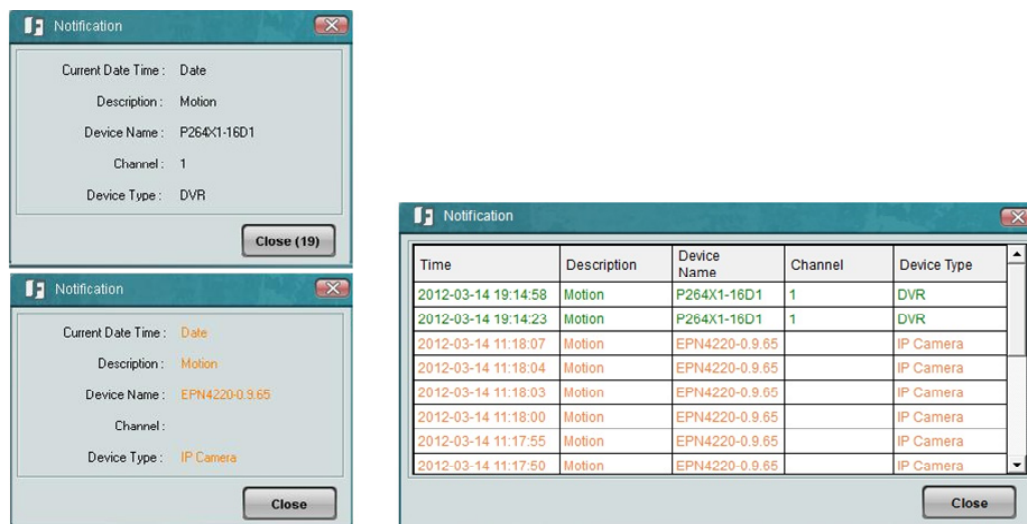
Note the following notification settings are only available for DVR / Mobile DVR: Fan Failure, HD Temperature, HD Failure, HD Full and HD Off.

【Close Notification】

Click **Manually** to manually close a notification window or click **Automatically** to automatically close a notification window based on the delay time.

【Notification Window Style】

Select a display type for the text notifications. There are two options: to display each text notification on an individual window, or to display all the text notifications on the same window.



Notifications on the individual windows

Notifications on the same window

Figure 10-3

【Send alarm to Main Application】

Check this feature to enable the alarm function on the Main Screen. For details, please see *10.2 Enabling the Alarm Function on the Main Screen*. Note that if you enable this function, the automatically pop-up live view / notification windows functions will be disabled.

【E-mail Notification】

When a selected event occurs, the PowerVideo Plus will send a text notification to the setup E-mail address. To enable the function, click **Email Settings**, type the related E-mail settings, and click the **Save** button to save the settings.

10.3 Enabling the Alarm Function on the Main Screen

When an event occurs or the alarm is triggered, on the Main Screen, the color of the camera icon will change for alert. To enable this function, on Figure 10-2, select the desired devices, configure the event / alarm settings, enable **Send alarm to Main Application** and click the **Save** button. Note that if you enable this function, the automatically pop-up live view / notification windows functions will be disabled.

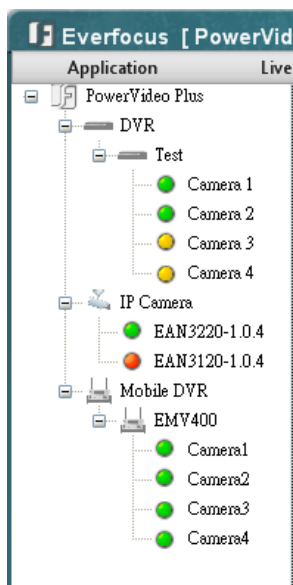


Figure 10-4

Green: Indicates the camera is working normally.

Red: Indicates video loss on the camera.

Yellow: Indicates the event occurs or the alarm is triggered.

Chapter 11 PTZ Control

You can remotely control the connected PTZ cameras. On the Main Screen, click **Option** and select **PTZ Control**. The following PTZ Control Panel appears.

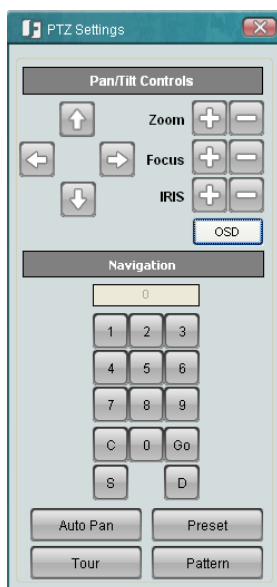




Figure 11-1

The following actions can be performed using the PTZ Control Panel:

1. Use the **Direction Arrows** (up, down, left, right) to move the camera to the desired direction and angle.
2. Click  or  to adjust the value of **Zoom / Focus / IRIS**.
3. To program a preset position (if supported by the camera), click the **Preset** button, click the number of the desired position and click the **S** (Set) button. To delete a preset position, click the **Preset** button, click the number of the desired position and click the **D** (Delete) button.
4. To jump to a preset position, click the **Preset** button, click the number of the desired position and click the **Go** button.
5. For cameras to seek the specific preset position, click the digit 1-9 buttons directly.
6. To start the auto pan function, click the **Auto Pan** button.
7. To start the pattern operation, which is the "0" Tour in EverFocus and Pelco PTZ cameras, click the **Pattern** button.
8. To run a tour, click the **Tour** button, click the number of the desired tour and click the **Go** button. To remove a tour (if supported by the camera), click the **Tour** button, click the number of the desired tour and click the **D** (Delete) button.

Chapter 12 Backup Utility

You can back up the configurations in the PowerVideo Plus. The backup settings can be restored to the current computer or imported to another computer.

To export the configurations:

1. On the Main Screen, click **Option** and select **Backup Utility**, a message window pops up “This will close PowerVideo Plus, ...”.
2. Click **Yes**, the Backup Utility wizard appears. Click **Next**, the following window appears.



Figure 12-1

3. Select **Export Settings** and click **Next**, the following window appears.

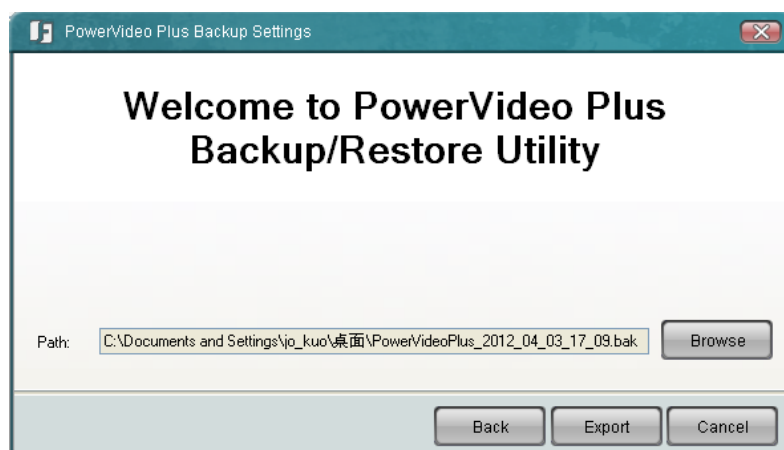


Figure 12-2

4. Click **Browse** to browse a backup path.
5. Click **Export**, the configuration file (.bak) will be saved to the selected path.

To import the configurations:

1. Follow **Step 1** and **2** in the Export Configurations section above.
2. Select **Import Settings** (Figure 12-1) and click **Next**, the following window appears.

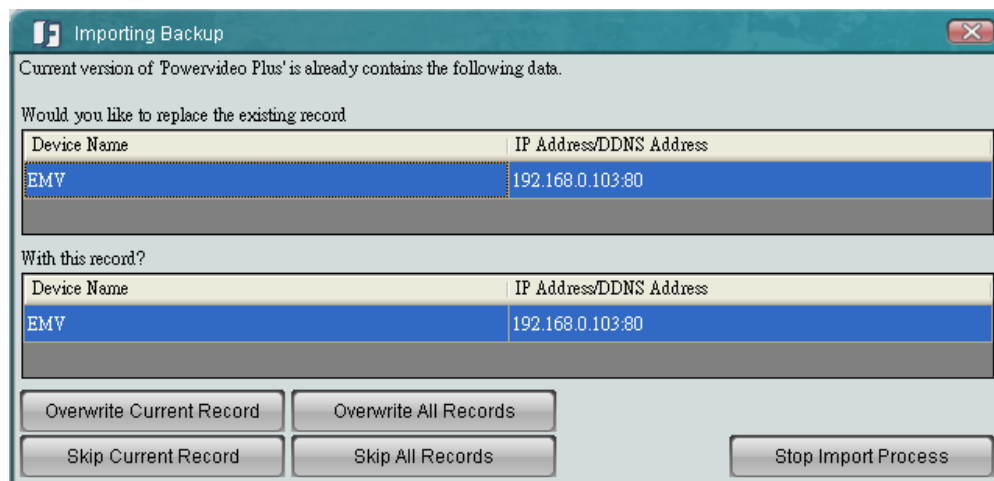


Figure 12-3

3. Click the **Overwrite All Records** button to overwrite all the configurations. The system will display a confirm message. Click the **Overwrite All Records** button again to start overwriting the configurations.

If you want to overwrite the current configuration displayed in the Backup Utility window, click the **Overwrite Current Record** button.

If you want to skip the current configuration displayed in the Backup Utility window, click the **Skip Current Record** button.

If you want to skip all the configurations, click the **Skip All Records** button.

Chapter 13 Bandwidth Monitor

The Bandwidth Monitor displays the bandwidth usage status for the PowerVideo Plus, which provides an instant visibility of the bandwidth used by the PowerVideo Plus.

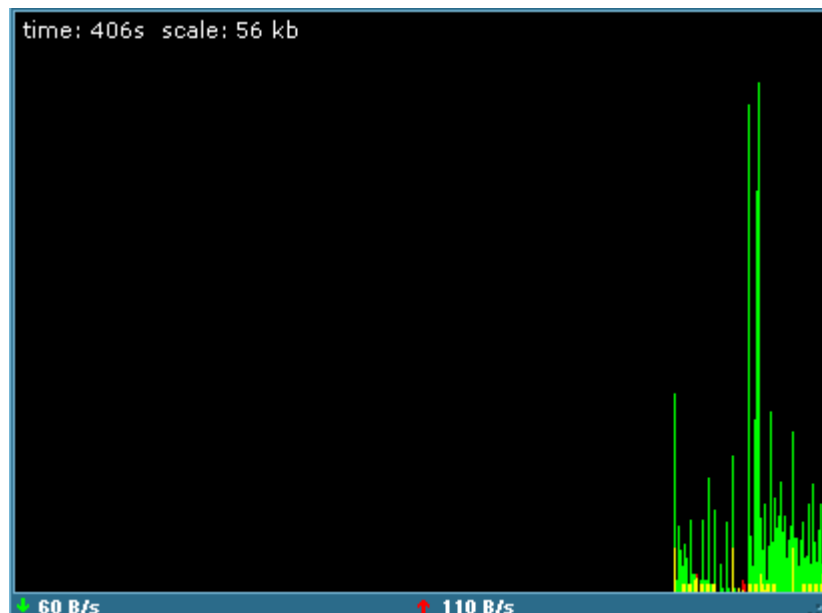


Figure 13-1

EverFocus Electronics Corp.

EverFocus Taiwan:

12F, No.79, Sec. 1, Shin-Tai Wu Road,
Hsi-Chih, Taipei, Taiwan
TEL: +886 2 2698 2334
FAX: +886 2 2698 2380
www.everfocus.com.tw
marketing@everfocus.com.tw

EverFocus China - Beijing:

Room 609, Technology Trade Building,
Shangdi Information Industry Base,
Haidian District, Beijing 100085, China
TEL: +86 10 6297 3336~39
FAX: +86 10 6297 1423
www.everfocus.com.cn
marketing@everfocus.com.cn

EverFocus USA - California:

1801 Highland Avenue, Unit A, Duarte, CA
91010, USA
TEL: +1 626 844 8888
FAX: +1 626 844 8838
www.everfocus.com
sales@everfocus.com

EverFocus Japan:

5F, Kinshicho City Building, 2-13-4
Koto-Bashi, Sumida-Ku, Tokyo, 130-0022, Japan
TEL: +81 3 5625 8188
FAX: +81 3 5625 8189
www.everfocus.co.jp
info@everfocus.co.jp

EverFocus India:

Suite 803, Housefin Bhavan, C-21,
Bandra Kurla Complex, Bandra (East),
Mumbai 400051, India
TEL: +91 22 6128 8700
FAX: +91 22 6128 8705
www.everfocus.in
sales@everfocus.in

EverFocus Europe - Germany:

Albert-Einstein-Strasse 1, D-46446
Emmerich, Germany
TEL: +49 2822 93940
FAX: +49 2822 939495
www.everfocus.de
info@everfocus.de

EverFocus China - Shenzhen:

4F, No. 2, D4 Building, Wan Yelong
Industrial Park, Tangtou Road, Shiyan,
Baoan, Shenzhen, Guangdong 518101, China
TEL: +86 755 2765 1313
FAX: +86 755 2765 0337
www.everfocus.com.cn
marketing@everfocus.com.cn

EverFocus USA - New York:

415 Oser Avenue, Unit S, Hauppauge, NY 11788, USA
TEL: +1 631 436 5070
FAX: +1 631 436 5027
www.everfocus.com
sales@everfocus.com

EverFocus Europe - UK:

Unit 12, Spitfire Business Park,
Hawker Road, Croydon Surrey, CR0 4WD, UK
TEL: +44 20 8649 9757 / +44 845 430 9999
FAX: +44 20 8649 9907
www.everfocusuk.co.uk
salesuk@everfocus.com



Your EverFocus product is designed and manufactured with high quality materials and components which can be recycled and reused. This symbol means that electrical and electronic equipment, at their end-of-life, should be disposed of separately from your household waste. Please, dispose of this equipment at your local community waste collection/recycling centre. In the European Union there are separate collection systems for used electrical and electronic product. Please, help us to conserve the environment we live in!

Ihr EverFocus Produkt wurde entwickelt und hergestellt mit qualitativ hochwertigen Materialien und Komponenten, die recycelt und wieder verwendet werden können. Dieses Symbol bedeutet, dass elektrische und elektronische Geräte am Ende ihrer Nutzungsdauer vom Hausmüll getrennt entsorgt werden sollen. Bitte entsorgen Sie dieses Gerät bei Ihrer örtlichen kommunalen Sammelstelle oder im Recycling Centre. Helfen Sie uns bitte, die Umwelt zu erhalten, in der wir leben!

