

Epson Stylus® CX8400 Series



Quick Guide

*Basic Copying, Printing, and Scanning
Maintaining Your All-in-One
Solving Problems*

Contents

Loading Paper	5
Using Special Papers	7
Copying a Document or Photo	9
Placing the Original on the Glass	9
Copying a Document	10
Copying a Photo	11
Restoring Photos	12
Printing From a Memory Card or Digital Camera	14
Printing From a Memory Card	14
Printing From a Digital Camera	21
Printing From Your Computer	23
Printing in Windows	23
Printing With a Macintosh	25
Selecting the Correct Paper Type	27
Scanning a Document or Photo	28
Basic Scanning	28
Restoring and Correcting Photos	29
Maintaining Your All-in-One	30
Checking the Print Head Nozzles	30
Cleaning the Print Head	31
Checking Ink Levels	32
Purchasing Epson Ink Cartridges	32
Replacing Ink Cartridges	33

Solving Problems 36
Checking for Software Updates 36
Error Indicators 37
Problems and Solutions 38
Where To Get Help 39
Notices. 41

Introduction

After you have set up your Epson Stylus® CX8400 Series all-in-one as described on the *Start Here* sheet, turn here to:

- Load paper
- Make a copy of a document or photo
- Print from a memory card or digital camera
- Get the basic steps for printing from your computer
- Scan a document or photo and restore or correct the color
- Perform routine maintenance
- Solve simple problems

This book tells you how to do most of these things without ever turning on your computer! Of course, your CX8400 Series can do a lot more when you connect it to your Windows® or Macintosh® computer. For additional instructions, see the on-screen *User's Guide* by double-clicking the icon for it on your desktop.

Please follow these guidelines as you read your CX8400 Series instructions:

Warning:

Warnings must be followed carefully to avoid bodily injury.

Caution:

Cautions must be observed to avoid damage to your equipment.

Note:

Notes contain important information about your CX8400 Series.

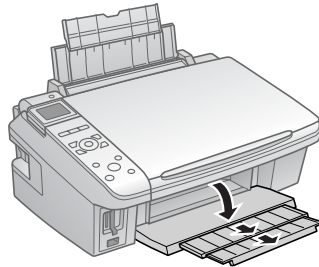
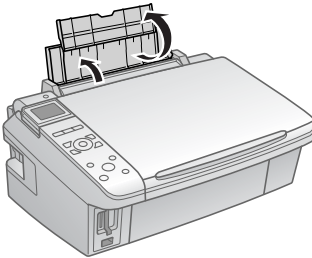
Tip:

Tips contain hints for better copying, scanning, and printing.

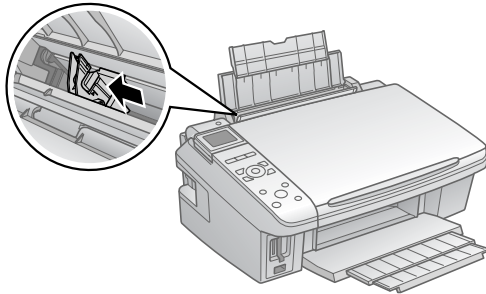
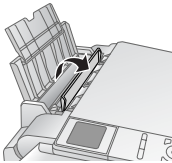
Loading Paper

You can print documents and photos on a variety of paper types and sizes. For details, see page 7.

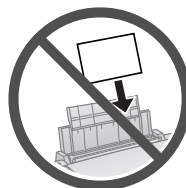
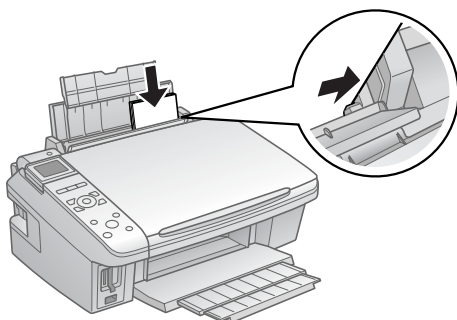
1. Open the paper support and flip up the extension. Then open the output tray and pull out the extensions.



2. Flip the feeder guard up, then press in the tab on the edge guide and slide it left.



3. Insert the paper, glossy or printable side up, against the right side and beneath the tab. (Load letterhead or pre-printed paper top edge first.)



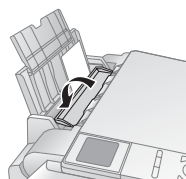
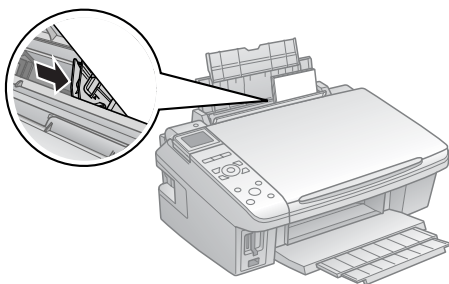
Always load paper short edge first, even for landscape printing.

You can load up to 120 sheets of plain paper, 80 sheets of matte, or 20 sheets of photo paper. Load other special papers one sheet at a time.

Note:

The type of paper you choose affects the way your printout looks. If you are just making a copy or printing a rough draft, plain paper is fine. However, for the best results, you'll want to use one of Epson's special ink jet papers designed for your printer. For example, your photos will look great printed on Epson Premium Photo Paper Glossy (see page 7 for more information).

4. Slide the edge guide against the paper, but not too tightly. Then flip the feeder guard down.



Note:

For instructions on loading envelopes, see your on-screen *User's Guide*.

Using Special Papers

Epson® offers a wide array of high quality papers, making it easy to maximize the impact of your photos, presentations, and creative projects.

You can purchase genuine Epson ink and paper at Epson Supplies CentralSM at www.epson.com/ink3 (U.S. sales) or www.epson.ca (Canadian sales). You can also purchase supplies from an Epson authorized reseller. To find the nearest one, call 800-GO-EPSON (800-463-7766).

Paper type	Size	Part number	Sheet count
Epson Ultra Premium Photo Paper Glossy	Borderless 4 × 6 inches	S041934	50
		S042181	60
		S042174	100
	Borderless 5 × 7 inches	S041945	20
	Letter (8.5 × 11 inches)	S041935	20
		S042182	25
		S042175	50
Epson Premium Photo Paper Glossy	Borderless 4 × 6 inches	S041808	40
		S041727	100
	Borderless 5 × 7 inches	S041464	20
	Borderless 8 × 10 inches	S041465	20
	Letter (8.5 × 11 inches)	S041286	20
		S042183	25
		S041667	50
Epson Premium Photo Paper Semi-gloss	Borderless 4 × 6 inches	S041982	40
	Letter (8.5 × 11 inches)	S041331	20
Epson Photo Paper Glossy	Borderless 4 × 6 inches	S041809	50
		S042038	100
	Letter (8.5 × 11 inches)	S041141	20
		S041649	50
		S041271	100
Epson Bright White Paper	Letter (8.5 × 11 inches)	S041586	500
Epson Premium Presentation Paper Matte	Borderless 8 × 10 inches	S041467	50
	Letter (8.5 × 11 inches)	S041257	50
		S042180	100

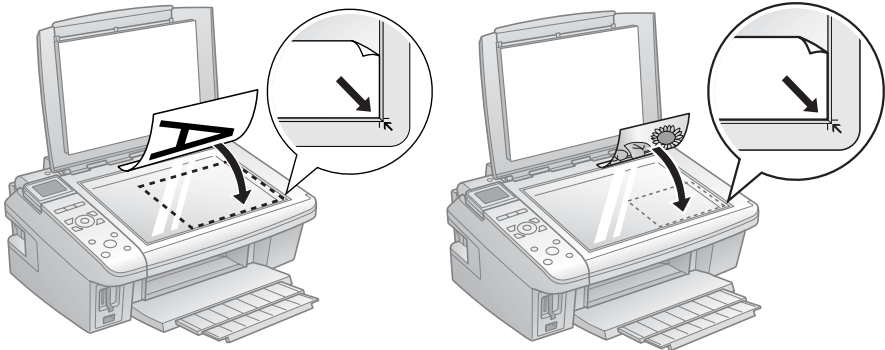
Paper type	Size	Part number	Sheet count
Epson Premium Presentation Paper Matte Double-sided	Letter (8.5 × 11 inches)	S041568	50
Epson Presentation Paper Matte	Letter (8.5 × 11 inches)	S041062	100
	Legal (8.5 × 14 inches)	S041067	100
Epson Photo Quality Self-adhesive Sheets	A4 (8.3 × 11.7 inches)	S041106	10
Epson Iron-on Cool Peel Transfer Paper	Letter (8.5 × 11 inches)	S041153	10

Copying a Document or Photo

Follow the instructions in this section to position your originals correctly on the glass and make color or black and white copies.

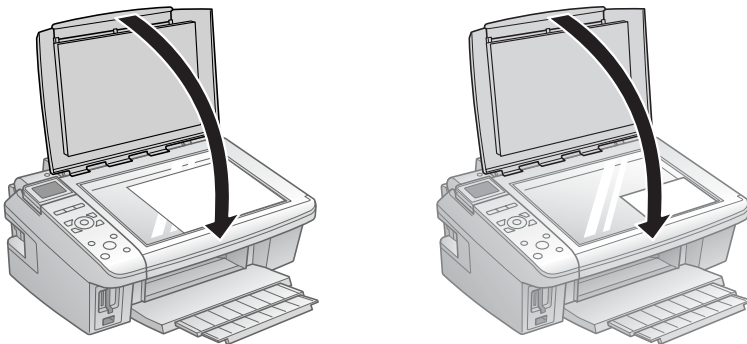
Placing the Original on the Glass

1. Open the document cover and place your original face-down on the glass, with the top facing into the front right corner.



Move the photo or document slightly away from the edges.

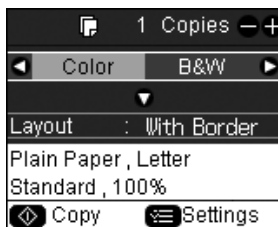
2. Close the cover gently so you don't move the original.



Copying a Document

You can copy documents onto letter- or A4-size plain paper or Epson special paper just like you would on a copy machine.

1. Press the **On** button to turn on the CX8400 Series.
2. Load letter- or A4-size plain paper or Epson special paper in the sheet feeder (see page 5).
3. Place your original document on the document table (see page 9).
4. Press the **Copy** button to enter copy mode.
5. To print more than 1 copy, press + or – to select the number (up to 99).
6. Press ◀ or ▶ to select **Color** or **B&W** copies.
7. Press ▼, then press ▶ to change the layout.



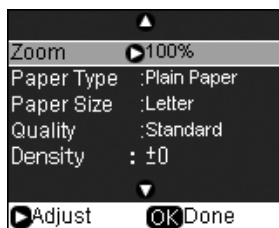
Select **With Border** to leave a small margin around the image or select **Borderless** to expand the image all the way to the edge of the paper (slight cropping may occur).

Note:

The layout setting must be set to **With Border** to select **Plain Paper**.

8. To change any of the other print settings, press **Menu** and select your settings (see page 13 for details). When you're done, press **OK**.
9. Press **Start** to begin copying.

To cancel copying, press **Stop/Clear Settings**.



Copying a Photo

You can copy photos onto 4 × 6-inch, 5 × 7-inch, letter-size, or A4-size Epson photo paper (various types available) for instant photo reprints. You can also print with or without borders and convert color photos to black and white.

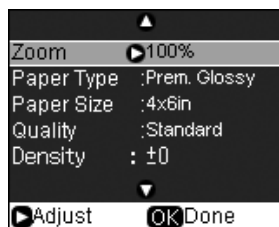
1. Press the **On** button to turn on the CX8400 Series.
2. Load 4 × 6-inch, 5 × 7-inch, letter-, or A4-size Epson photo paper in the sheet feeder (see page 5).
3. Place your original photo on the document table (see page 9).
4. Press the **Copy** button.
5. To print more than 1 copy, press + or – to select the number (up to 99).
6. Press ◀ or ▶ to select **Color** or **B&W** copies.
7. Press ▼, then press ▶ to change the layout.

Select **With Border** to leave a small margin around the image or select **Borderless** to expand the image all the way to the edge of the paper (slight cropping may occur).

Note:

The layout setting must be set to **With Border** to select **Plain Paper**.

8. To change any other print settings, press **Menu** and select your settings (see page 13 for details). When you're done, press **OK**.
 9. Press **Start** to begin copying.
- To cancel copying, press **Stop/Clear Settings**.



Restoring Photos

You can restore old, faded 4 × 6-inch and 5 × 7-inch photos to their original brilliance. You can also make copies or edits of single or multiple photos.

1. Press the **On** button to turn on the CX8400 Series.
2. Load 4 × 6-inch, 5 × 7-inch, A4- or letter-size Epson photo paper.
3. Place your original photo on the document table.

Note:

You can copy up to 2 photos at the same time. Place them 0.2 inches (5 mm) apart.

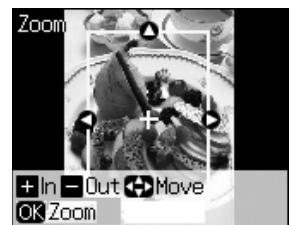
4. Press the **Restore** button, and press **OK**.
5. To turn on **Color Restoration**, press **►** and select **On** and press **OK**. (If your photo is not faded, do not turn on **Color Restoration**.)
6. Press **OK** again to prescan your photo. You see these settings over a preview of your photo:
7. To print more than 1 copy, press **+** or **-** to select the number.
8. If you want to crop your photos and enlarge the resulting image area to fit onto your paper, press **Display/Crop**.

- To resize the image area, press **+** or **-**.
- To move the image area, use the arrow buttons.
- To check the zoomed image, press **OK**.

After you are done cropping your photo, press **OK**.

9. To change print settings, press **Menu** and select your settings (see page 13). When you're done, press **OK**.
10. Press **Start** to begin copying.

To cancel copying, press **Stop/Clear Settings**.



Copy and Restore Mode Print Settings

- To adjust the copy size, select **Zoom** (reduction/enlargement) and choose **Actual** (to select a percentage using + or –) or **Auto Fit Page** (to automatically size the image to fit your paper).
- To change the paper type, select **Paper Type** and choose the type of paper you loaded.

Paper type	Paper Type setting
Plain paper	Plain Paper
Epson Bright White Paper	
Epson Presentation Paper Matte	
Epson Premium Presentation Paper Matte	Matte
Epson Premium Photo Paper Glossy	Prem. Glossy
Epson Premium Photo Paper Semi-gloss	
Epson Ultra Premium Photo Paper Glossy	Ultra Glossy
Epson Photo Paper Glossy	Photo Paper

- To change the paper size, select **Paper Size** and choose the size you loaded.
Note:
Paper Size options depend on the Paper Type you choose.
- To change the print quality, select **Quality** and choose **Draft**, **Standard**, or **Best**.
Note:
For photos, the default setting for **Quality** is **Standard**.
- To adjust the darkness or lightness of the print, select **Density** and choose a higher (darker) or lower (lighter) setting.
- To adjust the amount of image expansion when printing borderless photos, select **Expansion** and choose **Standard**, **Min**, or **Mid**.

Note:
You may see white borders on your printed photo if you use the **Min** setting.

Printing From a Memory Card or Digital Camera

The Epson Stylus CX8400 Series all-in-one lets you print photos from:

- Your digital camera's memory card (see below)
- Your camera itself (see page 21)

Printing From a Memory Card

The CX8400 Series lets you print color photos directly from your digital camera's memory card; just insert it into one of the memory card slots and you're ready to print.

If your digital camera supports DPOF™ (Digital Print Order Format), you can pre-select the photos you want to print while the card is still in the camera. Then, when you insert the card in the CX8400 Series, you can print them.

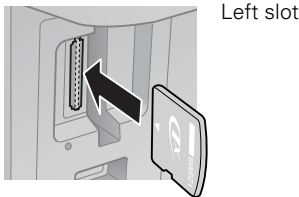
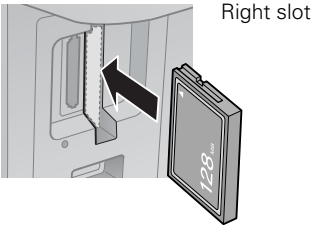
See these sections:

- "Compatible Cards and Image Formats" on page 15
- "Inserting the Card" on page 16
- "Selecting Individual Photos for Printing" on page 17
- "Selecting All Photos for Printing" on page 17
- "Printing Photos From an Index Sheet" on page 18
- "Printing Photos Pre-selected in Your Camera (DPOF)" on page 20
- "Memory Card Mode Print Settings" on page 20

See the *User's Guide* for instructions on copying memory card files between your CX8400 Series and a computer; printing photos by date; and printing photos from a slide show.

Compatible Cards and Image Formats

You can use the following types of cards with your CX8400 Series:



Slot	Type of card
Right slot	CompactFlash® Type I and II Microdrive™
Left slot	SD™ SDHC™ miniSD™* miniSDHC* microSD* microSDHC* MultiMediaCard™ Memory Stick™ Memory Stick Duo™* Memory Stick PRO™ Memory Stick PRO Duo™* Memory Stick Micro* MagicGate™ Memory Stick MagicGate Memory Stick Duo™* SmartMedia™ xD-Picture Card™ xD-Picture Card Type H xD-Picture Card Type M

* Adapter required

The CX8400 Series supports image files that meet the following requirements:

Media format	DCF version 1.0 or 2.0 compliant*
File format	JPEG Supports Exif version 2.21
Image size	80 × 80 pixels to 9200 × 9200 pixels
Number of files	Up to 999

* DCF is the “Design rule for Camera File system” standard

Note:

You can print only in color when printing directly from a memory card; you cannot print in black and white.

Inserting the Card

1. Make sure the CX8400 Series is turned on.

Note:

When you print directly from a memory card, it is best if the CX8400 Series is not connected to your computer or the computer is turned off. If you see a message on your computer screen when you insert a card, cancel the operation and close the screen.

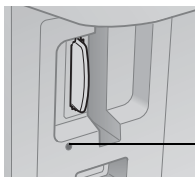
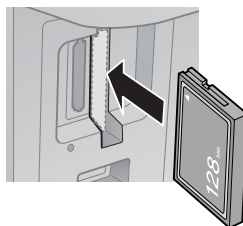
2. Insert your card into the correct slot as shown:

Insert just one card at a time (it won't go in all the way)

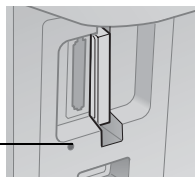
Left slot



Right slot



Memory card
access light



The memory card access light flashes and stays lit. Now you can:

- View your photos on the LCD display screen and print them (page 17)
- Print an index sheet so you can select which photos to print (see page 18)

When you want to remove the card, make sure the memory card access light is not flashing, then pull the card straight out of its slot.

Caution:

Do not remove the card or turn off the CX8400 Series while the memory card access light is flashing; you may lose data on the card.

Selecting Individual Photos for Printing

You can select individual photos for printing as you view them on the LCD display screen.

1. Press the **Memory Card** button. You see this screen:
2. Press **OK** to select **View and Print Photos**.
3. Press **◀** or **▶** to move through your photos and display one that you want to print.
4. Press the **+** or **-** button to select the number of copies you want of that photo.
5. If you want to crop your photo and enlarge the resulting image area to fit onto your paper, press **Display/Crop**.
 - To resize the image area, press **+** or **-**.
 - To move the image area, use the arrow buttons.
 - To check the zoomed image, press **OK**.
 - To rotate the image area, press **Menu**.After you finish cropping your photo, press **OK**.
6. Repeat steps 3 through 5 to select more photos, if you want.
7. To change any of the print settings displayed on the screen, press **Menu** and select your settings (see page 20). When you're done, press **OK**.
8. When you're ready to print, press **◊ Start**. To cancel printing, press **⊙ Stop/Clear Settings**.



Selecting All Photos for Printing

You can quickly select to print all of the photos on your memory card.

1. Press **◀** or **▶** to select **Print All Photos**, then press **OK**.
2. To print one copy of all the photos on 4 × 6-inch Epson photo paper (various types available), press **◊ Start** and go to step 5.

To select multiple copies with different print settings, press **OK** and continue with step 3.



3. To print more than 1 copy, press + or – to select the number.
4. To change any of the other print settings, press **Menu** (see page 20). When you're done, press **OK**.
5. When you're ready to print, press **Start**.
To cancel printing, press **Stop/Clear Settings**.



Printing Photos From an Index Sheet

You can print an index sheet containing small versions of all the photos on your memory card. Then you can select the photos you want by marking them on the sheet and scanning the sheet. The CX8400 Series automatically prints them.

Note:

When you print directly from a memory card, it is best if the CX8400 Series is not connected to your computer or the computer is off. If you see a message on your computer screen when you insert a card, cancel the operation and close the screen.

Printing an Index Sheet

1. Load several sheets of plain letter- or A4-size paper (see page 5).
2. Insert a memory card in a memory card slot (see page 16).
3. Press the **Memory Card** button to enter memory card mode.
4. Press **◀** or **▶** to select **Print Index Sheet**.
5. Press **OK**, then select the index sheet options you want and press **OK** again.



- To select the photos to include in the index sheet, choose **Select**, then select **All Photos** or **Latest 30** (beginning with the last photo by file name).
- To print the date or file name of each photo on the index sheet, select **Information** and choose **Date** or **File Name**.



6. Press **Start** to print the index sheet. The most recent photos are printed on the first index sheet. (If you need to cancel printing, press **Stop/Clear Settings**.)

Now you can select the photos you want to print (see the next section).


Printing Photos From The Index Sheet

Once you have printed an index sheet (see page 18), you can mark the photos you want to print right on the sheet, scan the sheet, and print the photos automatically.

1. Use a dark pen or pencil to fill in the circles on the sheet.

Correct: ●

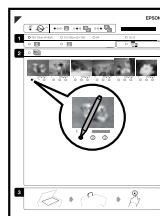
- Select the paper type and size you loaded.

Incorrect: ⊕ ⊗ 

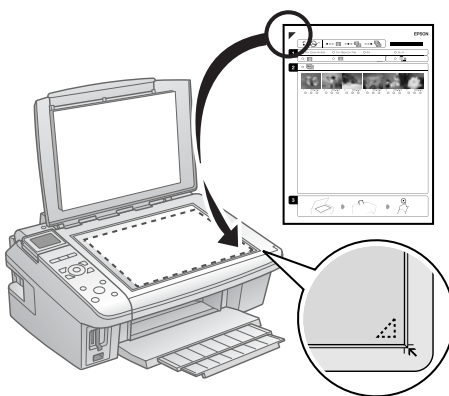
- Select **Borderless** or **With Border** layout.

- If you want to print the date the photo was taken on each photo, fill in the **Print date on photos** circle.

- Fill in one circle beneath each photo you want to print. The numbers indicate how many copies you want of that photo. If you want to print one copy of all the photos on the index sheet, fill in the **All** circle at the top.



2. Open the document cover. Then place the index sheet face-down on the glass, in the lower right corner so that the top of the sheet is aligned against the right edge of the glass. Close the document cover.



3. Load the type of paper on which you want to print your photos, either plain or photo paper.
4. Make sure your memory card is still inserted and the LCD display screen shows **Print Photos from Index Sheet** highlighted.
5. Press **OK**, then press **◊ Start** to start scanning and printing. Wait until printing finishes before printing from any additional index sheets.

If you need to cancel printing, press the **⊗ Stop/Clear Settings** button.

Printing Photos Pre-selected in Your Camera (DPOF)

If your camera supports DPOF (Digital Print Order Format), you can select the photos you want to print while your memory card is still in your camera. Then you can insert the card in the CX8400 Series and quickly print them.

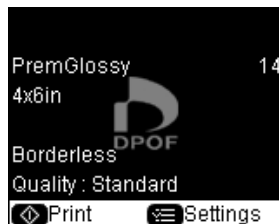
Note:

See your camera manual for instructions on selecting photos with DPOF.

1. Insert a memory card containing photos selected with DPOF in a memory card slot (see page 16).
2. Press **OK**.
3. To change any of the print settings displayed on the screen, press **Menu** and select your settings (see page 20). When you're done, press **OK**.
4. Press **◊ Start** to print your photos.

Note:

If you need to cancel printing, press **⊗ Stop/Clear Settings**.



Memory Card Mode Print Settings

- To change the paper type, select **Paper Type** and choose the type of paper you loaded (see page 13).
- To change the paper size, select **Paper Size** and choose the size of paper you loaded.

Note:

Paper Size options depend on the Paper Type you choose.

- To change the layout, select **Layout** and choose **With Border** to leave a small margin around the image or select **Borderless** to expand the image all the way to the edge of the paper (slight cropping may occur).
- To change the print quality, select **Quality** and choose **Standard**, **Best**, or **Draft**.

Note:

For photos, the default setting for **Quality** is **Standard**.

- To print the date on your photos and select the format for it, select **Date** and choose the format you want.
- To improve print quality, select **Bidirectional** and choose **Off** (choose **On** for faster print speed).
- To adjust the amount of image expansion when printing borderless photos, select **Expansion** and choose **Standard**, **Min**, or **Mid**.

Note:

You may see white borders on your printed photo if you use the **Min** setting.

Printing From a Digital Camera

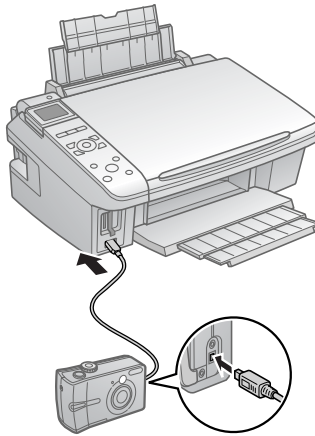
If you have a digital camera that supports PictBridge™ or USB DIRECT-PRINT™ printing, you can connect it to the CX8400 Series and print your photos directly from the camera. Check your camera manual to see if it is compatible. Your photos must be JPEG format and sized from 80 × 80 pixels to 9200 × 9200 pixels.

Note:

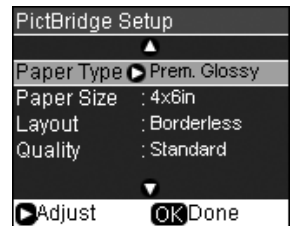
Epson cannot guarantee the compatibility of any cameras. Some combinations of paper type, size, and layout may not be supported, depending on your camera and the CX8400 Series settings.

1. Before you connect your camera, make sure your CX8400 Series is turned on, but not printing.
2. Remove any memory cards from the slots.

3. Connect the USB cable that came with your camera to the USB connector on the front of your CX8400 Series.



4. Load the paper on which you want to print your photos (see page 5).
5. Press **Setup**.
6. Press ◀ or ▶ to select **PictBridge Setup**, then press **OK**.
7. Press ▶ to change any of the print settings on the screen.
8. Press **OK**.
9. Turn on your camera.
10. Follow the instructions that came with your camera to select your photos and settings, and print them.



When you finish printing, turn off your camera and disconnect it from the USB connector on the CX8400 Series.

Printing From Your Computer

This section describes the basic steps for printing a photo or document stored on your Windows or Macintosh computer. For detailed instructions on printing, see the on-screen *User's Guide*.

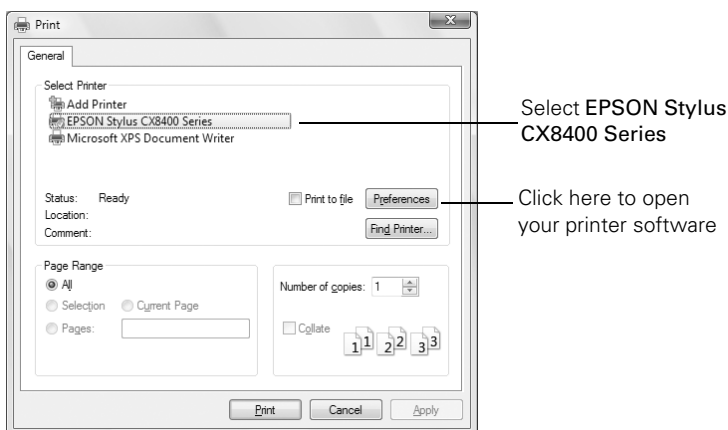
Before you start, make sure you've installed your printer software and connected the CX8400 Series to your computer as described on the *Start Here* sheet.

Tip:

It's a good idea to check for updates to your CX8400 Series software (see page 36 for instructions).

Printing in Windows

1. Load paper (see page 5).
2. Open a photo or document in a Windows program.
3. Open the File menu and select **Print**. You see a window like this one:



4. Make sure **EPSON Stylus CX8400 Series** is selected, then click the **Preferences** or **Properties** button.

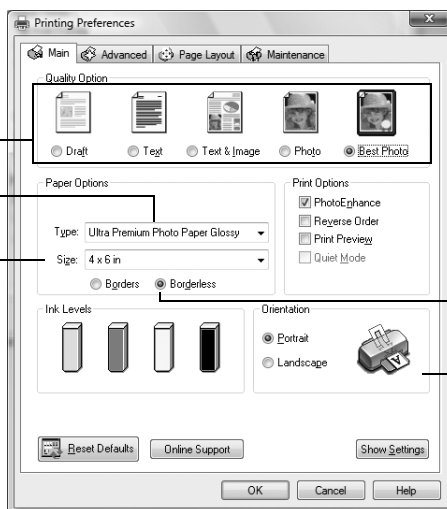
(If you see a **Setup**, **Printer**, or **Options** button, click it. Then click **Preferences** or **Properties** on the next screen.)

5. On the Main tab, select the basic print settings. Make sure you choose the correct paper **Type** setting for the paper you are using (see page 27 for details).

Select the type of document you're printing
(choose **Photo** or **Best Photo** for pictures)

Select your
paper **Type**

Select your
paper **Size**



Click here for
borderless photos

Select your
document
Orientation

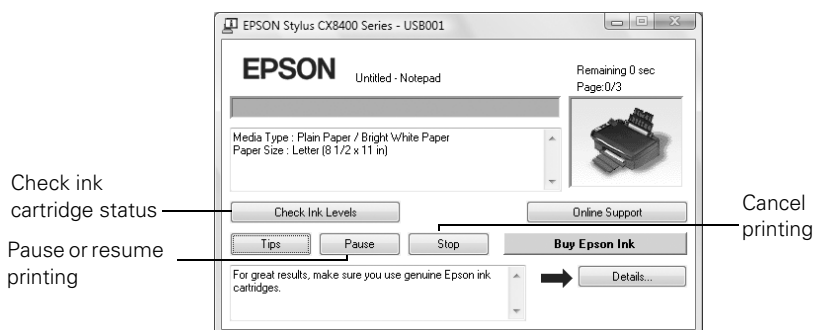
6. If you want to reduce or enlarge your printout, or print double-sided, click the **Page Layout** tab and select settings as necessary.
7. For more printing options, click the **Advanced** tab.

Note:

For more information about print settings, click **Help** or see your on-screen *User's Guide*.

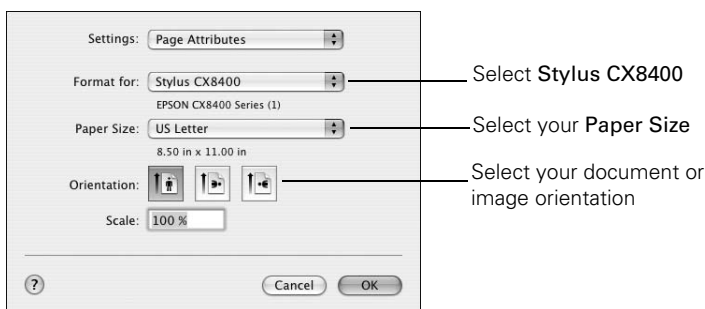
8. Click **OK** to save your settings.

9. Click **OK** or **Print** to start printing. This window appears and shows the progress of your print job.



Printing With a Macintosh

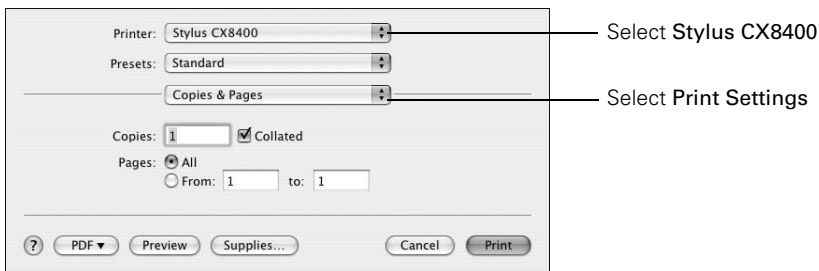
1. Load paper (see page 5).
2. Open a photo or document in an application.
3. Select **Page Setup** from the File menu. Select the following settings:



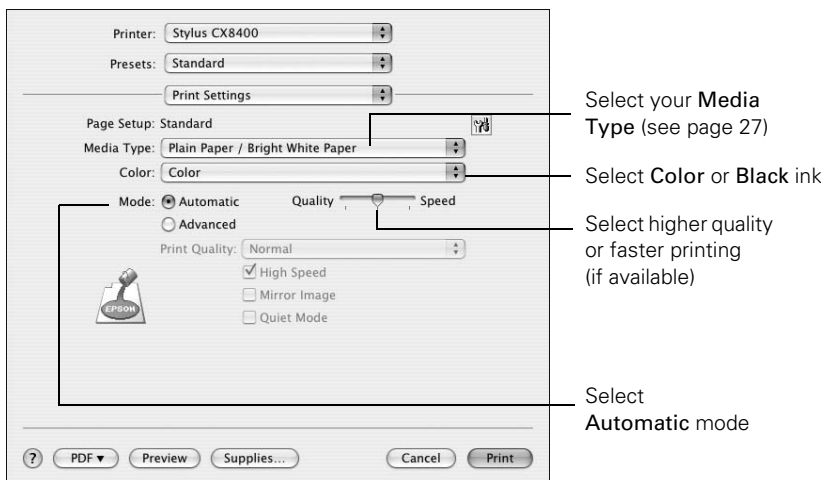
For borderless printing, choose a **Sheet Feeder - Borderless** option in the Paper Size list for your paper size (US Letter, 8 × 10 in, 5 × 7 in, or 4 × 6 in).

4. Click **OK** to close the Page Setup window.

5. Select **Print** from the **File** menu. You see a window like this one:



6. Choose **Print Settings** from the pop-up menu and select the following settings as necessary:



Note:



In certain programs, you may need to select **Advanced** before you can select **Print Settings**. For more information about printer settings, click the ? button.

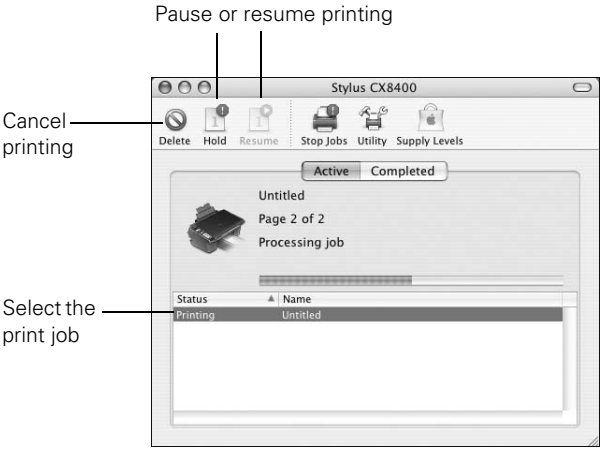
7. Choose any other printing options you may need from the pop-up menu. See your on-screen *User's Guide* for details.
8. Click the **Advanced** button to change additional settings.

Note:

For more information on advanced settings click ?.

9. Click **Print**.

10. To monitor the progress of your print job, click the  printer icon in the dock (or click the  Print Center icon and double-click **Stylus CX8400** on the next screen).



Selecting the Correct Paper Type

Select the correct **Type** (see page 24) or **Media Type** (see page 26) setting in your printer software. This tells the CX8400 Series what kind of paper you’re using, so the ink coverage can be adjusted accordingly.

For this paper	Select this setting
Plain paper Epson Bright White Paper Epson Presentation Paper Matte	Plain Paper/Bright White Paper
Epson Ultra Premium Photo Paper Glossy	Ultra Premium Photo Paper Glossy
Epson Premium Photo Paper Glossy	Premium Photo Paper Glossy
Epson Photo Paper Glossy	Photo Paper Glossy
Epson Premium Photo Paper Semi-gloss	Premium Photo Paper Semi-Gloss
Epson Premium Presentation Paper Matte Epson Premium Presentation Paper Matte Double-sided Epson Photo Quality Self-adhesive Sheets Epson Iron-on Cool Peel Transfer Paper	Premium Presentation Paper Matte
Envelopes	Envelope

Scanning a Document or Photo

You can use your Epson Stylus CX8400 Series all-in-one to scan a photo or document and save it on your computer or other device.

You can even restore and correct photographs as you scan (see page 29).

The Epson Scan software provides three scanning modes:

- **Full Auto Mode** scans quickly and easily using automatic settings.
- **Home Mode** previews your image and provides preset options for scanning.
- **Professional Mode** previews your image and provides a full array of tools.

Note:

For detailed scanning instructions, see the on-screen *User's Guide*.

Basic Scanning

You can scan from any TWAIN-compliant application—such as ArcSoft PhotoImpression™—using Epson Scan. Or you can start Epson Scan directly from your computer and save your image to a file.

1. Open the document cover and place your original face-down on the glass, in the front right corner, as shown on page 9.
2. Close the cover gently so you don't move the original.
3. Do one of the following to start Epson Scan:
 - **Windows:**
Double-click the EPSON Scan icon on your desktop.
 - **Macintosh:**
Double-click EPSON Scan in the Applications folder.
 - If you are scanning from an application, start your application. Then open the File menu, choose **Import** or **Acquire**, and select **Epson Stylus CX8400 Series**.

You see the Epson Scan standby window:

4. If the Mode setting in the upper right corner is set to **Full Auto Mode**, click the **Scan** button.

If you are in Home or Professional Mode, you see a different Epson Scan settings window. (You can change the mode using the Mode selector in the upper right corner.)

5. If you want to restore faded color in a photo or make other corrections, click **Customize**. Then follow the instructions below.
6. Click **OK**. The image is scanned and you see its icon in Windows Explorer or Macintosh Finder.

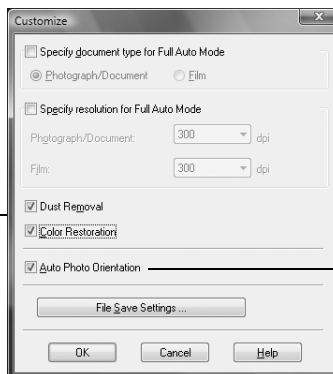


Restoring and Correcting Photos

You can automatically transform a faded, dusty, or badly exposed color photo into one with true-to-life color and sharpness as you scan. Use the **Color Restoration** and **Dust Removal** options in Epson Scan's Full Auto Mode. In Home and Professional Mode, you can also select **Backlight Correction** to remove shadows from images with too much background light.

Full Auto Mode

Click the **Customize** button, click **Dust Removal** and/or **Color Restoration**, click **OK**, and click **Scan**.



Automatically orients your photos based on detected faces, the sky, etc. If your photo is not oriented correctly, turn off **Auto Photo Orientation** and try again.

Note:

For more information, see the on-screen *User's Guide*. You can also click **Help** on the Epson Scan screen for information about all the available settings.

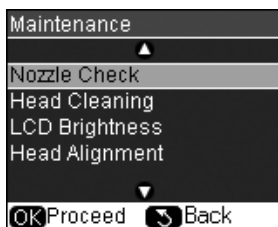
Maintaining Your All-in-One

Follow the instructions in this chapter for checking and cleaning the print head nozzles and replacing ink cartridges. To align the print head, if necessary, see your on-screen *User's Guide*.

Checking the Print Head Nozzles

If your printouts are faint or have gaps in them, some of the nozzles in the print head may be clogged or ink may be running low in one or more of the ink cartridges. Follow the steps below to check the print head nozzles.

1. Load letter-size paper in the sheet feeder.
2. Press **Setup**.
3. Press **◀** or **▶** to select **Maintenance**, then press **OK**.
4. Select **Nozzle Check** and press **OK**.
5. Press **◇ Start**.
6. Check the nozzle check pattern that prints to see if there are gaps in the lines.



Nozzles are clean



Nozzles need cleaning

7. If there are no gaps, press **OK**.

If there are gaps or the pattern is faint, press **◇ Start** to clean the print head (see page 31).

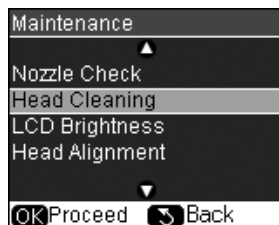
Cleaning the Print Head

If print quality has declined and the nozzle check pattern indicates clogged nozzles, you can clean the print head. Print head cleaning uses ink, so clean it only if necessary.

Note:

You cannot clean the print head if an ink cartridge is expended or low. You must replace the cartridge first (see page 33).

1. Load letter-size paper in the sheet feeder (see page 5).
2. Press **Setup**.
3. Press ◀ or ▶ to select **Maintenance** and press **OK**.
4. Press ▼ to select **Head Cleaning** and press **OK**.
5. Press ◊ **Start**.



Cleaning lasts around 1 minute. When it's finished, you see a message on the display screen.

Caution:

Never turn off the CX8400 Series during head cleaning or you may damage it.

6. Press ◊ **Start** to run a nozzle check (as described on page 30) to verify that the print head is clean.
7. If there are still gaps or lines, or the test patterns are faint, run another cleaning cycle and check the nozzles again.

Note:

If you don't see any improvement after cleaning the print head two times, turn off your CX8400 Series and wait at least six hours to let any dried ink soften. Then try printing again.

If you do not use your CX8400 Series often, it is a good idea to print a few pages at least once a month to maintain good print quality.

Checking Ink Levels

You can check ink levels any time using the LCD display screen.

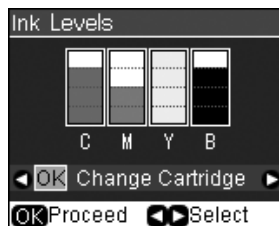
Note:

You cannot print or copy when an ink cartridge is expended even if the other cartridges are not expended. Replace any expended cartridges before printing or copying.

1. Press **Setup**.
2. Press ◀ or ▶ to select **Ink Levels** and press **OK**.

A cartridge marked with an ! is getting low on ink.
See page 33 to replace the cartridge, if you like.

3. Press **Back** as necessary to return to the main screen.



A window may also appear on your computer screen when you try to print when ink is low. This window can optionally display ink offers and other updates retrieved from an Epson website. On a Windows computer that is connected to the Internet, you may see a screen asking if you want to receive these Epson offers the first time you try to print when ink is low. Click **Accept** or **Decline**.

Note:

To disable checking for ink offers or updates from Epson, see the instructions in your on-screen *User's Guide*.

Purchasing Epson Ink Cartridges

You can purchase genuine Epson ink and paper from Epson Supplies Central at www.epson.com/ink3 (U.S. sales) or www.epson.ca (Canadian sales). You can also purchase supplies from an Epson authorized reseller. To find the nearest one, call 800-GO-EPSON (800-463-7766).

Use the following list when you order or purchase new ink cartridges:

- 69 Black or 68 High Capacity Black
- 69 Cyan
- 69 Magenta
- 69 Yellow

Note:

We recommend that you use genuine Epson cartridges and do not refill them. The use of other products may affect your print quality and could result in printer damage.

Yields vary considerably based on images printed, print settings, paper type, frequency of use, and temperature. For print quality, a small amount of ink remains in the cartridge after the “replace cartridge” indicator comes on.

For best printing results, use up a cartridge within six months of opening the package.

Replacing Ink Cartridges

Make sure you have a new ink cartridge before you begin. You must install new cartridges immediately after removing the old ones.

Caution:

Do not open ink cartridge packages until you are ready to install the ink. Cartridges are vacuum packed to maintain reliability.

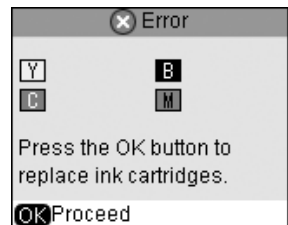
Note:

Leave the expended cartridge installed until you have obtained a replacement, or the ink remaining in the print head nozzles may dry out.

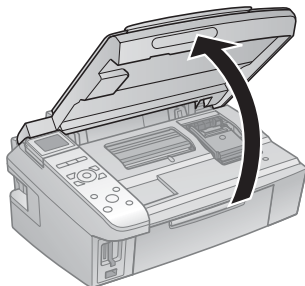
1. Turn on the CX8400 Series.
2. If an ink cartridge is low or expended, you see a message on the CX8400 Series display screen. Note which cartridges need to be replaced and press OK.

If a cartridge is expended, you must replace it to be able to print. If a cartridge is low, you can continue printing until a cartridge needs replacement.

If you're replacing a cartridge before you see a message on the CX8400 Series display screen, press **Setup**, select **Maintenance**, and press **OK**. Then select **Change Ink Cartridge** and press **OK**.



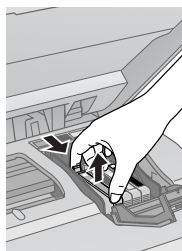
3. Open the scanner, and open the cartridge cover.



4. Squeeze the tab on the cartridge and lift it up. Dispose of it carefully. Do not take the used cartridge apart or try to refill it.

Warning:

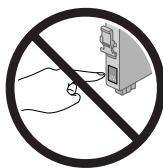
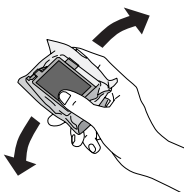
If ink gets on your hands, wash them thoroughly with soap and water. If ink gets into your eyes, flush them immediately with water. Keep ink cartridges out of the reach of children.



5. Before you open the new cartridge package, shake it four or five times. Then remove it from the package.

Caution:

Do not touch the green chip on the front of the cartridge. This can damage the ink cartridge.



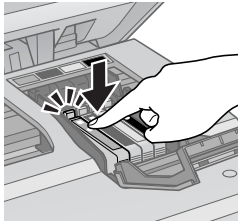
6. Remove the yellow tape from the bottom of the ink cartridge.

Caution:

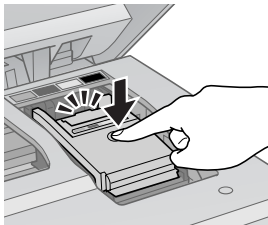
Do not remove any other labels or seals, or ink may leak.



7. Insert the new ink cartridge into the holder and push it down until it clicks into place.



8. Once you replace all the cartridges that need replacing, close the cartridge cover and push it down until it clicks into place.



9. Close the scanner.
10. Press **OK** to begin charging the ink. This takes about 2 minutes. When you see a completion message on the display screen, ink charging is finished.

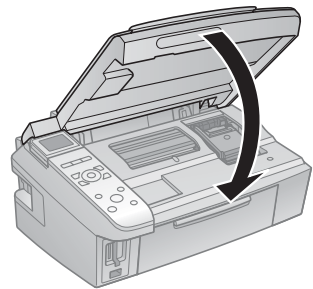
Caution:

Never turn off the CX8400 Series while ink is charging or you'll waste ink. If you see an ink replacement message on the display screen, press **OK** and press down all the cartridges securely.

Note:

If you replaced a cartridge while copying a document or photo, cancel printing and make sure your original is still placed correctly on the document table. Then copy your original again.

If you remove an expended ink cartridge or a cartridge after the low ink message appears, you cannot reinstall and use the cartridge.



Solving Problems


If you have a problem with your CX8400 Series, check the messages on the display screen to diagnose the cause.

You can also check “Problems and Solutions” on page 38 for basic troubleshooting suggestions, or double-click the *User’s Guide* icon on your computer desktop for more detailed help.

Checking for Software Updates

Periodically, it’s a good idea to check Epson’s support website for free updates to your CX8400 Series software. Open your on-screen *User’s Guide* and select **Download the Latest Software** or visit Epson’s support website at **epson.com/support** (U.S.) or **epson.ca** (Canada).



With Windows, you can select **Driver Update** on the Maintenance tab in the printer settings window. You can also click **Start** or , select **Programs** or **All Programs**, select **EPSON**, and click **Epson Stylus CX8400 Series Driver Update**. Also select **EPSON Scan** and click **Epson Stylus CX8400 Series Scanner Driver Update**.

Error Indicators

Follow the instructions on the display screen to solve most common problems. If you see one of the error messages below, follow the steps here to proceed.

LCD display screen message	Problem and solution
A printer error has occurred. See your documentation.	Turn the CX8400 Series off, make sure no paper is jammed inside (see page 38), and turn it back on. If the error is not resolved, contact Epson for help (see page 39).
A scanner error has occurred. See your documentation.	Turn the CX8400 Series off and then back on. If the error is not resolved, contact Epson for help (see page 39).
Waste ink pad in the printer is saturated.	Parts inside the CX8400 Series are at the end of their service life. Contact Epson for help (see page 39).
Cannot recognize ink cartridges.	Press OK and make sure the cartridges are installed correctly (see page 33).
Data error. The document cannot be printed.	The CX8400 Series cannot print from the connected camera due to a problem with the camera. Check your camera for the problem.
Data error. The document may not be printed correctly.	A photo you're printing from a connected camera has a problem. Check your camera and the photo you're trying to print.
Cannot recognize the memory card or disk.	The memory card is not inserted correctly or there is a problem with the card. Remove it and check the card (see page 15).

Note:

If you need to adjust the brightness of the display screen, press **Setup**, select **Maintenance**, select **LCD Brightness**, and press **▲** for a lighter screen and **▼** for a darker screen.

Problems and Solutions

Check the solutions below if you're having trouble using your CX8400 Series.

Printing and Copying Problems

- Make sure your original is positioned in the front right corner of the glass. If the edges are cropped, move your original away from the edges slightly.
- Make sure your paper is loaded short edge first and is positioned against the right side with the edge guide against its left side. Don't load paper above the arrow mark inside the edge guide.
- Make sure the paper size settings are correct for the paper you loaded.

Paper Feeding Problems

- If paper doesn't feed, remove it from the sheet feeder. Flip through the stack to separate the sheets a little. Then reload the paper against the right side, and slide the left edge guide against the paper (but not too tightly).
- Do not load too many sheets at once. Load up to 20 sheets of photo paper, 80 of matte, or 120 sheets of plain paper. Load other special papers one sheet at a time.
- Do not load paper with holes punched in it.
- If paper is jammed, follow these steps:
 1. Gently pull out jammed paper from the output tray or sheet feeder.
 2. If paper is stuck inside, turn off the CX8400 Series.
 3. Open the scanner, remove the jammed paper and torn pieces, close the scanner, and turn the CX8400 Series back on.

Print Quality Problems

If you have any problems with the copy or print quality, try these solutions:

- Make sure the document is placed flat against the document table glass and the CX8400 Series is not tilted or placed on an uneven surface.
- Load the paper printable side up (usually the whiter, brighter, or glossy side).

- Make sure your paper isn't damp or curled.
- Use a support sheet with special paper or load your paper one sheet at a time. Remove sheets from the output tray so not too many collect at a time.
- Make sure the type of paper you loaded matches the paper size and paper type settings on the control panel or in your printer software (see page 27).
- For the best print quality, use Epson special paper (see page 7) and genuine Epson ink cartridges (see page 32).
- If you notice light or dark bands across your printouts or they are too faint, you may need to clean the print head (see page 31). This unclogs the nozzles so they can deliver ink properly. Run a nozzle check as described on page 30 to see if the print head needs cleaning.
- Clean the print head as described on page 31.
- If you notice jagged vertical lines, you may need to align the print head. See your *User's Guide* for instructions.
- The ink cartridges may be low on ink. Check your cartridge status (see page 32) and replace cartridges, if necessary (see page 33).
- If a dotted line appears in the image, clean the document table glass with a soft, dry, lint-free cloth (paper towels are not recommended), or use a small amount of glass cleaner on a soft cloth, if necessary. Do not spray glass cleaner directly on the glass.

Where To Get Help

Epson Technical Support

Epson provides these technical support services:

Internet Support

Visit Epson's support website at **epson.com/support** and select your product for solutions to common problems. You can download drivers and documentation, get FAQs and troubleshooting advice, or e-mail Epson with your questions.

Speak to a Support Representative

Before you call Epson for support, please have the following information ready:

- Product name (Epson Stylus CX8400 Series)
- Product serial number (located on the label in back)
- Proof of purchase (such as a store receipt) and date of purchase
- Computer configuration
- Description of the problem

Then call:

- U.S.: (562) 276-4382, 6 AM to 6 PM, Pacific Time, Monday through Friday.
- Canada: (905) 709-3839, 6 AM to 6 PM, Pacific Time, Monday through Friday.

Toll or long distance charges may apply.

Purchase Supplies and Accessories

You can purchase genuine Epson ink and paper at Epson Supplies Central at www.epson.com/ink3 (U.S. sales) or www.epson.ca (Canadian sales). You can also purchase supplies from an Epson authorized reseller. To find the nearest one, call 800-GO-EPSON (800-463-7766).

Other Software Technical Support

ArcSoft PhotoImpression

Phone: (510) 440-9901

Website: www.arcsoft.com

Notices

Important Safety Instructions

Before using your Epson Stylus CX8400 Series all-in-one, read and follow these safety instructions:

- Be sure to follow all warnings and instructions marked on the CX8400 Series.
- Use only the type of power source indicated on the CX8400 Series label.
- Use only the power cord that comes with the CX8400 Series. Use of another cord may cause fires or shock. Do not use the cord with any other equipment.
- Place the CX8400 Series near a wall outlet where the plug can be easily unplugged.
- Do not let the power cord become damaged or frayed.
- If you use an extension cord with the CX8400 Series, make sure the total ampere rating of the devices plugged into the extension cord does not exceed the cord's ampere rating. Also, make sure the total ampere rating of all devices plugged into the wall outlet does not exceed the wall outlet's ampere rating.
- Avoid locations that are subject to rapid changes in heat or humidity, shocks or vibrations, or dust.
- Leave enough room around the CX8400 Series for sufficient ventilation. Do not block or cover openings in the CX8400 Series case or insert objects through the slots.
- Do not place the CX8400 Series near a radiator or heating vent or in direct sunlight.
- Place the CX8400 Series on a flat, stable surface that extends beyond its base in all directions. It will not operate properly if it is tilted or at an angle.
- Make sure the back of the CX8400 Series is at least 4 inches (10 cm) away from the wall.
- Do not open the scanner section while the CX8400 Series is copying, printing, or scanning.
- Do not spill liquid on the CX8400 Series.
- Except as specifically explained in your documentation, do not attempt to service the CX8400 Series yourself.

- Unplug the CX8400 Series and refer servicing to qualified service personnel under the following conditions: if the power cord or plug is damaged; if liquid has entered the product; if the product has been dropped or the case damaged; if the product does not operate normally or exhibits a distinct change in performance. Adjust only those controls that are covered by the operating instructions.
- When storing or transporting the CX8400 Series, do not tilt it, stand it on its side, or turn it upside down; otherwise ink may leak from the cartridges.

Ink Cartridge Safety Instructions

- Keep ink cartridges out of the reach of children and do not drink the ink.
- Be careful when you handle used ink cartridges; there may be ink remaining around the ink supply port. If ink gets on your skin, wash it off with soap and water. If it gets in your eyes, flush them immediately with water.
- Do not put your hand inside the CX8400 Series or touch any cartridges during printing.
- Install a new ink cartridge immediately after removing an expended one. Leaving cartridges uninstalled can dry out the print head and may prevent the CX8400 Series from printing.
- If you remove an ink cartridge for later use, protect the ink supply area from dirt and dust and store it in the same environment as the CX8400 Series. Note that there is a valve in the ink supply port, making covers or plugs unnecessary, but care is needed to prevent the ink from staining items that the cartridge touches. Do not touch the ink cartridge ink supply port or surrounding area.

LCD Display Screen Safety

- Use only a dry, soft cloth to clean the LCD display screen. Do not use liquid or chemical cleansers.
- If the LCD display screen is damaged, contact Epson. If the liquid crystal solution gets on your hands, wash them thoroughly with soap and water. If the liquid crystal solution gets into your eyes, flush them immediately with water. If discomfort or vision problems remain after a thorough flushing, see a doctor immediately.

FCC Compliance Statement

For United States Users

This equipment has been tested and found to comply with the limits for a Class B digital device, pursuant to Part 15 of the FCC Rules. These limits are designed to provide reasonable protection against harmful interference in a residential installation. This equipment generates, uses, and can radiate radio frequency energy and, if not installed and used in accordance with the instructions, may cause harmful interference to radio or television reception. However, there is no guarantee that interference will not occur in a particular installation. If this equipment does cause interference to radio and television reception, which can be determined by turning the equipment off and on, the user is encouraged to try to correct the interference by one or more of the following measures:

- Reorient or relocate the receiving antenna.
- Increase the separation between the equipment and receiver.
- Connect the equipment into an outlet on a circuit different from that to which the receiver is connected.
- Consult the dealer or an experienced radio/TV technician for help.

WARNING

The connection of a non-shielded equipment interface cable to this equipment will invalidate the FCC Certification of this device and may cause interference levels which exceed the limits established by the FCC for this equipment. It is the responsibility of the user to obtain and use a shielded equipment interface cable with this device. If this equipment has more than one interface connector, do not leave cables connected to unused interfaces. Changes or modifications not expressly approved by the manufacturer could void the user's authority to operate the equipment.

For Canadian Users

This Class B digital apparatus complies with Canadian ICES-003.

Cet appareil numérique de la classe B est conforme à la norme NMB-003 du Canada.

Declaration of Conformity

According to 47CFR, Part 2 and 15 for: Class B Personal Computers and Peripherals;
and/or CPU Boards and Power Supplies used with Class B Personal Computers:

We: Epson America, Inc.
Located at: MS 3-13
3840 Kilroy Airport Way
Long Beach, CA 90806
Telephone: (562) 290-5254

Declare under sole responsibility that the product identified herein, complies with 47CFR Part 2 and 15 of the FCC rules as a Class B digital device. Each product marketed is identical to the representative unit tested and found to be compliant with the standards. Records maintained continue to reflect the equipment being produced can be expected to be within the variation accepted, due to quantity production and testing on a statistical basis as required by 47CFR §2.909. Operation is subject to the following two conditions: (1) this device may not cause harmful interference, and (2) this device must accept any interference received, including interference that may cause undesired operation.

Trade Name: Epson
Type of Product: Multifunction printer
Model: C351A

Epson America, Inc. Limited Warranty

What Is Covered: Epson America, Inc. (“Epson”) warrants to the original retail purchaser that the Epson printer covered by this limited warranty statement, if purchased and operated only in the United States or Canada, will be free from defects in workmanship and materials for a period of one (1) year from the date of original purchase. For warranty service, you must provide proof of the date of original purchase.

What Epson Will Do To Correct Problems: Should your Epson printer prove defective during the warranty period, please call the Epson ConnectionSM at (562) 276-4382 (U.S.) or (905) 709-3839 (Canada) for warranty repair instructions and return authorization. An Epson service technician will provide telephone diagnostic service to determine whether the printer requires service. If service is needed, Epson will, at its option, exchange or repair the printer without charge for parts or labor. If Epson authorizes an exchange for the defective unit, Epson will ship a replacement printer to you, freight prepaid, so long as you use an address in Canada or the U.S. (excluding Puerto Rico and U.S. Possessions). Shipments to other locations will be made freight collect. You are responsible for securely packaging the defective unit and returning it to Epson within five (5) working days of receipt of the replacement. Epson requires a debit or a credit card number to secure the cost of the replacement printer in the event that you fail to return the defective one. If your printer is being repaired, Epson will direct you to send your printer to Epson or its authorized service center, where the printer will be fixed and sent back to you. You are responsible for packing the printer and for all costs to and from the Epson authorized service center. When warranty service involves the exchange of the printer or a part, the item replaced becomes Epson property. The replacement printer or part may be new or refurbished to the Epson standard of quality, and, at Epson’s option, may be another model of like kind and quality. Epson’s liability for replacement of the covered printer will not exceed the original retail selling price of the covered printer. Exchange products and parts assume the remaining warranty period of your original product covered by this limited warranty.

What This Warranty Does Not Cover: This warranty covers only normal use in the United States and Canada. Using this product for continuous production or similar high duty purposes is not considered normal use; damage, maintenance or service from such use will not be covered under this warranty. This warranty is not transferable. This warranty does not cover any color change or fading of prints or reimbursement of materials or services required for reprinting. This warranty does not cover damage to the Epson product caused by parts or supplies not manufactured, distributed or certified by Epson. This warranty does not cover ribbons, ink cartridges or third party parts, components, or peripheral devices added to the Epson product after its shipment from Epson, e.g., dealer or user-added boards or components. Epson is not responsible for warranty service should the Epson label or logo or the rating label or serial number be removed or should the product fail to be properly maintained or fail to function properly as a result of misuse,

abuse, improper installation, neglect, improper shipping, damage caused by disasters such as fire, flood, and lightning, improper electrical current, software problems, interaction with non-Epson products, or service other than by an Epson Authorized Servicer. If a claimed defect cannot be identified or reproduced, you will be held responsible for the costs incurred.

THE WARRANTY AND REMEDY PROVIDED ABOVE ARE EXCLUSIVE AND IN LIEU OF ALL OTHER EXPRESS OR IMPLIED WARRANTIES INCLUDING, BUT NOT LIMITED TO, THE IMPLIED WARRANTIES OF MERCHANTABILITY, NON-INFRINGEMENT OR FITNESS FOR A PARTICULAR PURPOSE. SOME LAWS DO NOT ALLOW THE EXCLUSION OF IMPLIED WARRANTIES. IF THESE LAWS APPLY, THEN ALL EXPRESS AND IMPLIED WARRANTIES ARE LIMITED TO THE WARRANTY PERIOD IDENTIFIED ABOVE. UNLESS STATED HEREIN, ANY STATEMENT OR REPRESENTATIONS MADE BY ANY OTHER PERSON OR FIRM ARE VOID. EXCEPT AS PROVIDED IN THIS WRITTEN WARRANTY, NEITHER EPSON AMERICA, INC. NOR ITS AFFILIATES SHALL BE LIABLE FOR ANY LOSS, INCONVENIENCE, OR DAMAGE, INCLUDING DIRECT, SPECIAL, INCIDENTAL OR CONSEQUENTIAL DAMAGES, RESULTING FROM THE USE OR INABILITY TO USE THE EPSON PRODUCT, WHETHER RESULTING FROM BREACH OF WARRANTY OR ANY OTHER LEGAL THEORY.

In Canada, warranties include both warranties and conditions.

Some jurisdictions do not allow limitations on how long an implied warranty lasts, and some jurisdictions do not allow the exclusion or limitation of incidental or consequential damages, so the above limitations and exclusions may not apply to you. This warranty gives you specific legal rights and you may have other rights which vary from jurisdiction to jurisdiction.

To find the Epson Authorized Reseller nearest you, visit our website at:
<http://www.epson.com>.

To find the Epson Customer Care Center nearest you, visit:
<http://www.epson.com/support>.

You can also write to:
Epson America, Inc., P.O. Box 93012, Long Beach, CA 90809-3012

Copyright Notice

All rights reserved. No part of this publication may be reproduced, stored in a retrieval system, or transmitted in any form or by any means, electronic, mechanical, photocopying, recording, or otherwise, without the prior written permission of Seiko Epson Corporation. The information contained herein is designed only for use with this Epson product. Epson is not responsible for any use of this information as applied to other equipment.

Neither Seiko Epson Corporation nor its affiliates shall be liable to the purchaser of this product or third parties for damages, losses, costs, or expenses incurred by purchaser or third parties as a result of: accident, misuse, or abuse of this product or unauthorized modifications, repairs, or alterations to this product, or (excluding the U.S.) failure to strictly comply with Seiko Epson Corporation's operating and maintenance instructions.

Seiko Epson Corporation shall not be liable for any damages or problems arising from the use of any options or any consumable products other than those designated as Original Epson Products or Epson Approved Products by Seiko Epson Corporation.

Responsible Use of Copyrighted Materials

Epson encourages each user to be responsible and respectful of the copyright laws when using any Epson product. While some countries' laws permit limited copying or reuse of copyrighted material in certain circumstances, those circumstances may not be as broad as some people assume. Contact your legal advisor for any questions regarding copyright law.

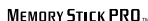
Trademarks

Epson and Epson Stylus are registered trademarks and Exceed Your Vision and USB DIRECT-PRINT are trademarks of Seiko Epson Corporation.

Supplies Central and Epson Connection are service marks of Epson America, Inc.

General Notice: Other product names used herein are for identification purposes only and may be trademarks of their respective owners. Epson disclaims any and all rights in those marks.

© 2007 Epson America, Inc. 6/07





411059000

CPD-23794
Printed in XXXXXX XX.XX-XX XXX