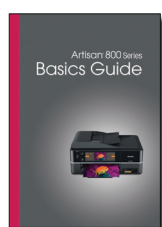
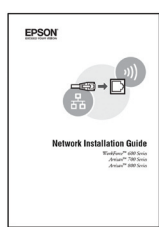
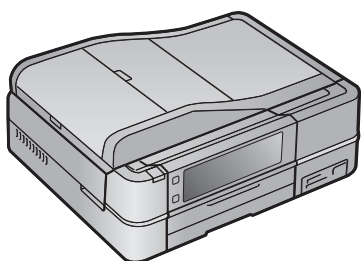


Artisan™ 800 Series Start Here

1 Unpack



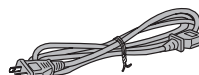
(Included for
Canada only)



Ethernet cable
(gray)



Phone cord
(black)



Power cord

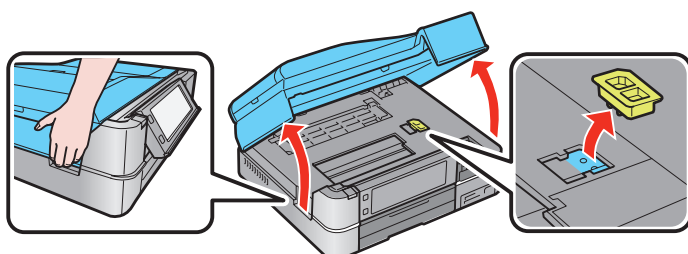
Canada only: For French speakers, remove the sticker from the backing sheet and place it on the right side of the control panel.

Caution: Do not open ink cartridge packages until you are ready to install the ink. Cartridges are vacuum packed to maintain reliability.

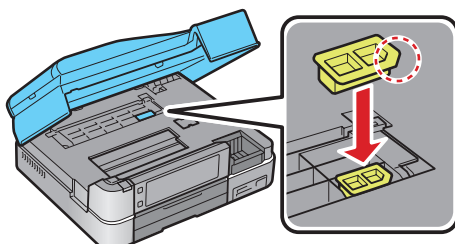
If anything is missing, contact Epson as described on the back under “Any questions?”.

Remove all protective materials.

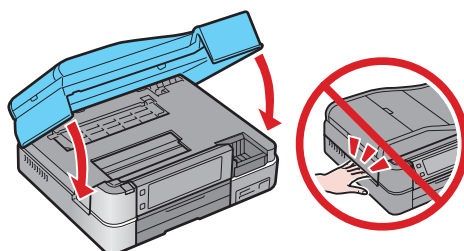
- 1 Raise the scanner and remove the transportation lock.



- 2 Store the transportation lock as shown.



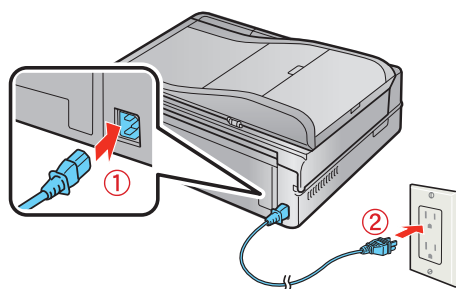
- 3 Lower the scanner.



2 Turn on and adjust

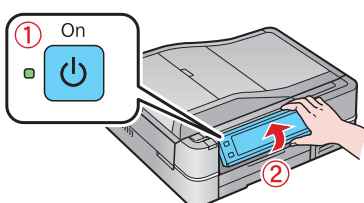
- 1 Connect the power cable.

Caution: Do not connect to your computer yet.



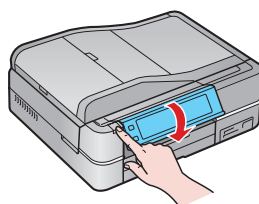
411555700

- 2** Press the  **On** button, then lift the control panel to raise it.



To lower the control panel, press the **Unlock** button.

Caution: To avoid damaging your Artisan 800 Series, always press the **Unlock** button to lower the control panel.



3 Make settings

- 1** Select your language and country.

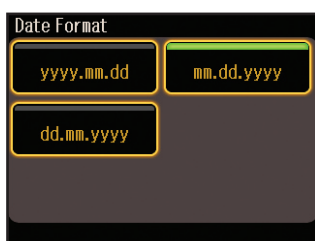
Touch the screen to select the desired option. Press ◀ or ▶ to see more countries.



- 2** For the Daylight Saving Time setting, select **Summer** if your region uses Daylight Saving Time and it's currently in effect. (DST is effective from spring through summer.) Otherwise, select **Winter** to turn off the setting. Press **OK**.



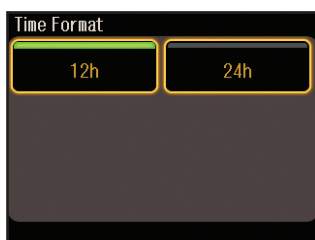
- 3** Select the date format.



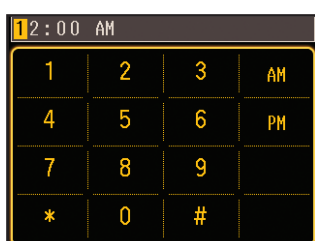
- 4** Use the numeric keypad to set the date, then press **OK**.



- 5** Select the time format.



- 6** Use the numeric keypad to set the time.



- 7** Press **OK** when done.

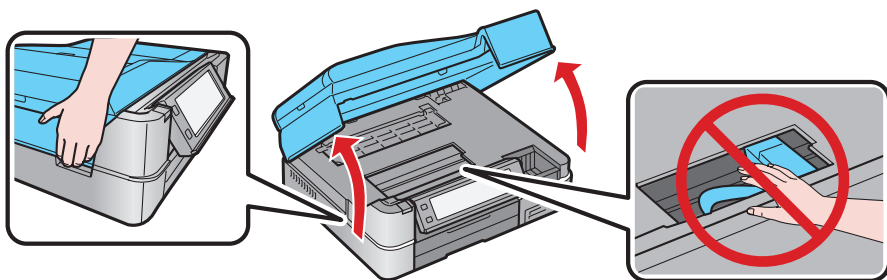
Note: You can change the date and time settings by pressing the **Home** button, selecting **Setup**, selecting **Printer Setup**, then **Date/Time**.

4

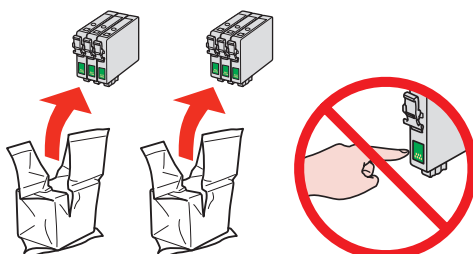
Install ink cartridges

Note: Don't load paper before installing the ink cartridges.

- 1 Raise the scanner.

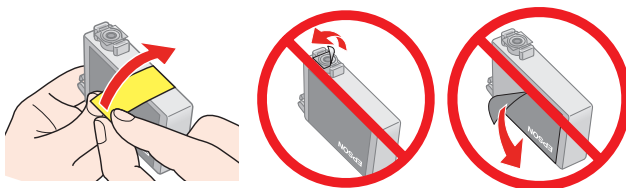


- 2 Unpack the ink cartridges.

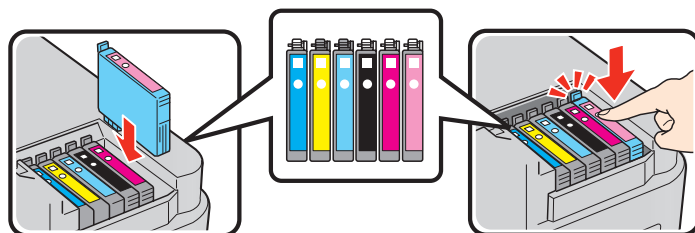


- 3 Remove only the yellow tape from each cartridge.

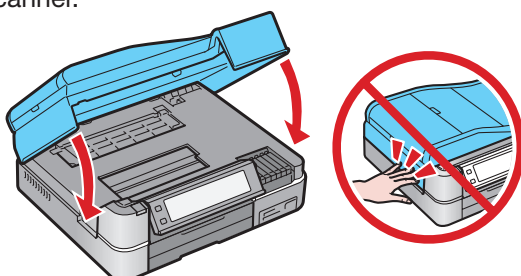
Caution: Don't remove any other seals from the cartridges.



- 4 Insert the cartridges in the holder for each color. Press the cartridges down until they click.



- 5 Lower the scanner.



- 6 Wait while ink charges. Charging takes about 5 minutes.

Note: Your Artisan 800 Series ships with full cartridges. Part of the ink from the first cartridges is used for priming the Artisan 800 Series. Replacement cartridges will print more pages.

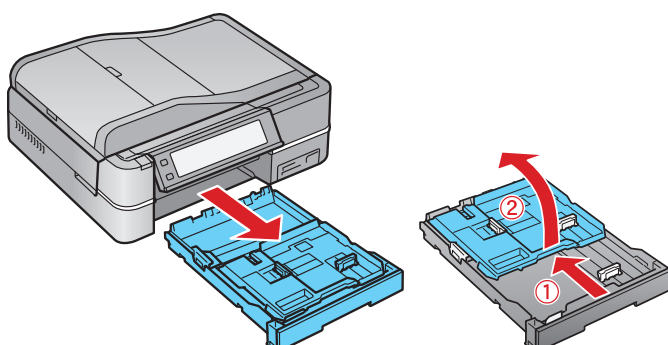
Caution: Don't turn off the Artisan 800 Series while the ink system is initializing or you'll waste ink.

5

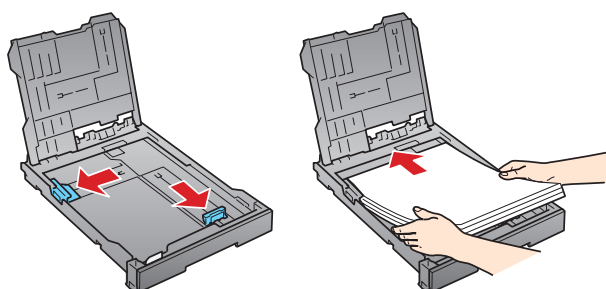
Load paper

The paper cassette has 2 trays. The main tray is for letter-size, legal-size, or 8 x 10-inch paper. The photo tray is for 4 x 6- or 5 x 7-inch photo paper.

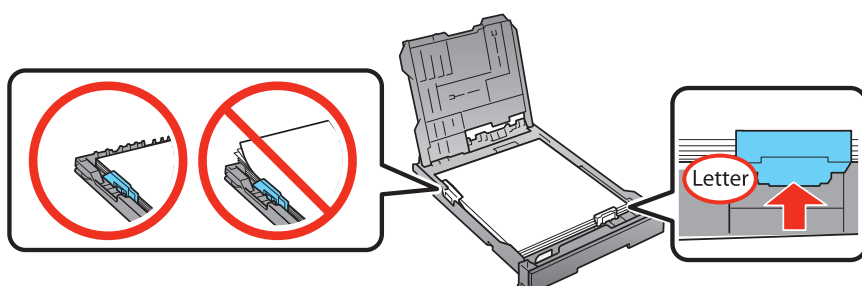
- 1 Pull out the paper cassette. Then slide back the photo tray and lift it up.



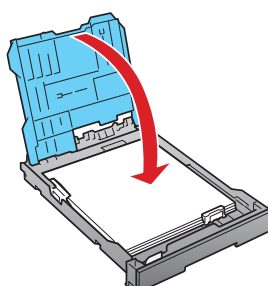
- 2** Squeeze the edge guides and slide them out. Then insert paper with the glossy or printable side face-down.



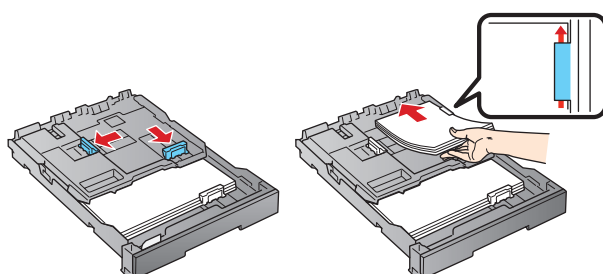
- 3** Slide the edge guides against the paper.



- 4** Lower the photo tray.

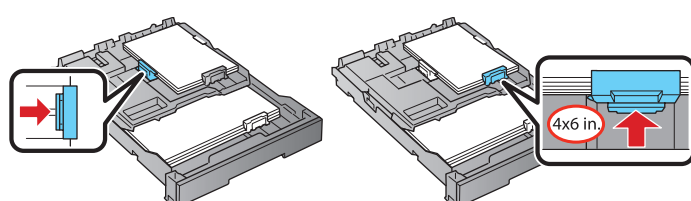


- 5** Squeeze the edge guides and slide them out. Then insert 4 x 6-inch or 5 x 7-inch photo paper with the glossy or printable side face-down.

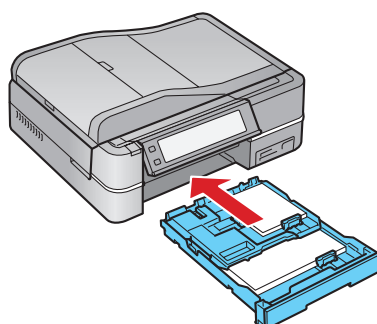


Note: Make sure the paper fits under the edge guides.

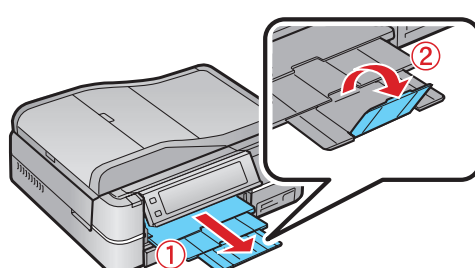
- 6** Slide the edge guides against the paper.



- 7** Keep the cassette flat as you insert it.



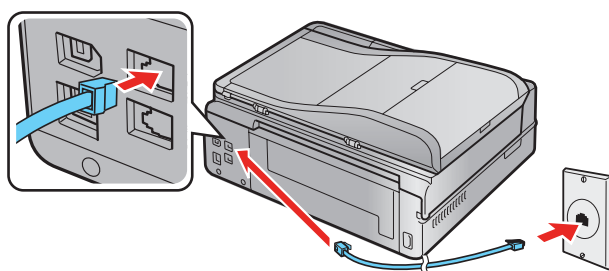
- 8** Extend the output tray and flip up the stopper.



6

Connect the phone cord

To use the Artisan 800 Series for faxing, connect the included phone cord from a telephone wall jack to the **LINE** port on the Artisan 800 Series. To connect a telephone or answering machine, see the *Basics Guide* for instructions.



Note: If you're connecting to a DSL phone line, you must use a DSL filter or you won't be able to fax. Contact your DSL provider for the necessary filter.

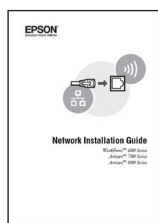
7

Choose your connection



Network (wireless or wired)

See your *Network Installation Guide*. You can't install your software as described below.



OR



USB connection

Make sure you have a USB cable (not included). Then follow the steps below.

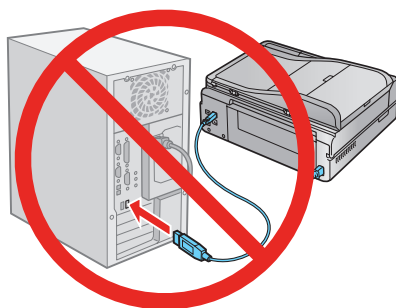


USB connection

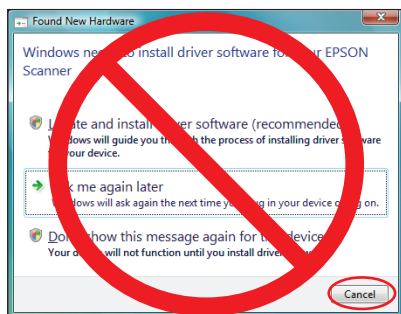
Follow these steps to connect the Artisan 800 Series directly to your computer using a USB cable (not included).

Windows

- 1 Make sure the Artisan 800 Series is **NOT CONNECTED** to your computer.

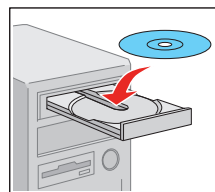


Note: If you see a Found New Hardware screen, click **Cancel** and disconnect the USB cable. You can't install your software that way.

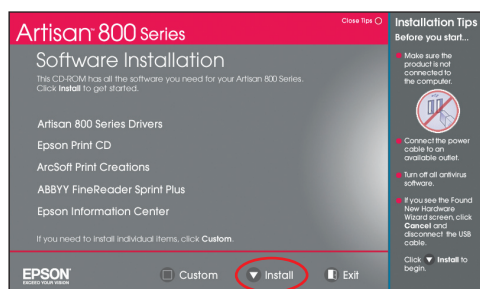


- 2 Insert the Artisan 800 Series software CD.

With Windows Vista, if you see the AutoPlay window, click **Run Epsetup.exe**. When you see the User Account Control screen, click **Continue**.



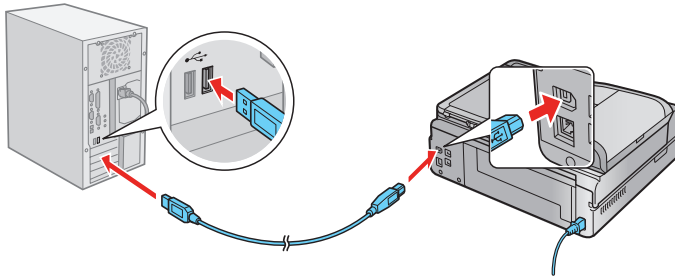
- 3 Click **Install** and follow the on-screen instructions.



- 4** When you see this screen, select **Install driver for direct USB connection** and then click **Next**.



- 5** When prompted, connect a USB cable. Use any open USB port on your computer.



Note: If installation doesn't continue after a moment, make sure you securely connected the USB cable and turned on the Artisan 800 Series.

- 6** Follow the on-screen instructions to install the rest of the software and register your Artisan 800 Series.

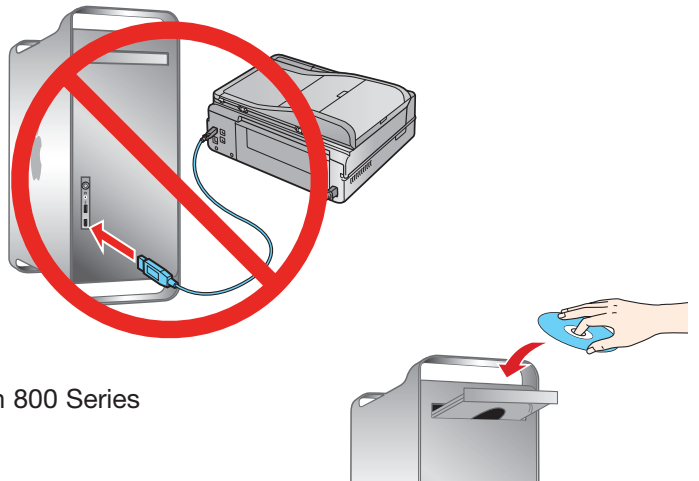
Be sure to register your Artisan 800 Series to receive these great benefits: 2-year limited warranty and 2-year toll-free customer support.*

- 7** When you're done, remove the CD.

You're ready to go! Enjoy your Artisan 800 Series! See your *Basics Guide* or on-screen *Epson Information Center* for instructions.

Macintosh®

- 1** Make sure the Artisan 800 Series is **NOT CONNECTED** to your computer.



- 2** Insert the Artisan 800 Series software CD.

- 3** Double-click the **Epson** icon.

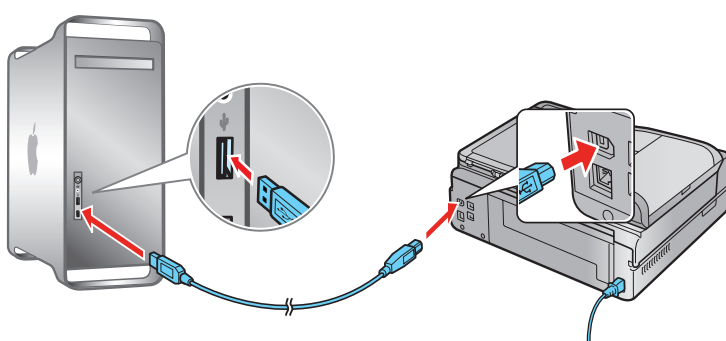
- 4** Click **Install** and follow the on-screen instructions.



- 5** When you see this screen, select **Install driver for direct USB connection** and then click **Next**.

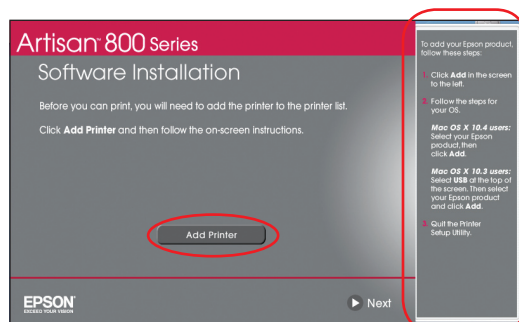


- 6** When prompted, connect a USB cable. Use any open USB port on your computer. Make sure the Artisan 800 Series is securely connected and turned on.



Mac OS X 10.5 users: skip to step 9. Other users: continue with step 7.

- 7** When you see this screen, click **Add Printer**. Follow the steps on the right side of the screen to add the Artisan 800 Series.



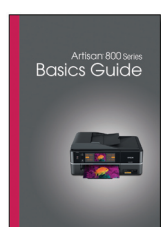
- 8** Click **Next** again, if necessary.
- 9** Follow the on-screen instructions to install the rest of the software and register your Artisan 800 Series.
- Be sure to register your Artisan 800 Series to receive these great benefits: 2-year limited warranty and 2-year toll-free customer support.*
- 10** When you're done, eject the CD.

You're ready to go! Enjoy your Artisan 800 Series! See your *Basics Guide* or on-screen *Epson Information Center*.

Any questions?

Basics Guide

Easy and quick answers to your questions on printing, copying, scanning, and faxing.



On-screen Epson Information Center

Click the desktop shortcut for easy access to the Artisan 800 Series *Epson Information Center*, FAQs, online troubleshooting advice, and software downloads. You can also purchase paper and ink.



Network Installation Guide

Instructions on configuring the Artisan 800 Series for a network.



On-screen help with your software

Select **Help** or **?** when you're using your software.

Epson Technical Support

Internet Support

Visit Epson's support website at **epson.com/support** and select your product for solutions to common problems. You can download drivers and documentation, get FAQs and troubleshooting advice, or e-mail Epson with your questions.

For a video tutorial and other information about setting up a wireless network, go to: **epson.com/support/wireless**

Speak to a Support Representative

Call (562) 276-4382 (U.S.) or (905) 709-3839 (Canada), 6 AM to 6 PM, Pacific Time, Monday through Friday. Days and hours of support are subject to change without notice. Toll or long distance charges may apply.

Software Technical Support

ArcSoft Print Creations™
www.arcsoft.com/support

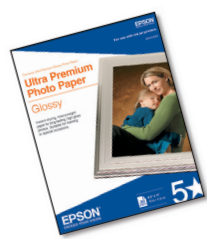
ABBYY® FineReader® Sprint Plus
(510) 226-6717
www.abbyyusa.com
support@abbyyusa.com

Need paper and ink?

Try Epson premium papers with Claria® ink for better than lab quality results. For the right supplies at the right time, you can purchase them at Epson Supplies CentralSM at www.epson.com/ink3 (U.S. sales) or www.epson.ca (Canadian sales). You can also purchase supplies from an Epson authorized reseller. To find the nearest one, call 800-GO-EPSON (800-463-7766).

Genuine Epson Paper

Epson offers a wide variety of papers to meet your needs; visit Epson Supplies Central for more information.



Ultra Premium Photo Paper Glossy
Instant-drying high gloss paper for long-lasting photos, suitable for framing.

Genuine Epson Inks



Look for the numbers below to find your cartridges. It's as easy as remembering your number!



Color	Standard capacity	High capacity
Black	—	98
Cyan	99	98
Magenta	99	98
Yellow	99	98
Light Magenta	99	98
Light Cyan	99	98

Note: The 98 High Capacity Black (and all 99 Standard Capacity) ink cartridges are available online and from Epson authorized resellers. The 98 High Capacity color ink cartridges are available only online; visit www.epson.com/highcapacity (U.S. sales) or www.epson.ca (Canadian sales).

* 1-year limited warranty to all purchasers; 2-year toll-free support and second year warranty require registration within 60 days of purchase. For California and Québec residents, failure to submit this product registration form does not diminish your warranty rights.

Epson is a registered trademark, Epson Exceed Your Vision is a registered logomark and Supplies Central is a service mark of Seiko Epson Corporation. Claria is a registered trademark and Artisan is a trademark of Epson America, Inc.

General Notice: Other product names used herein are for identification purposes only and may be trademarks of their respective owners. Epson disclaims any and all rights in those marks.

This information is subject to change without notice.

© 2008 Epson America, Inc. 7/08

CPD-25956R1

Cut out the card to the right and keep it with you when purchasing replacement ink cartridges.

Printed in XXXXXX

Ink Cartridges for Artisan® 800

Color	Standard capacity	High capacity
Black	—	98
Cyan	99	98
Magenta	99	98
Yellow	99	98
Light Magenta	99	98
Light Cyan	99	98

The 98 High Capacity color ink cartridges are available only online; visit www.epson.com/highcapacity (U.S. sales) or www.epson.ca (Canadian sales).