

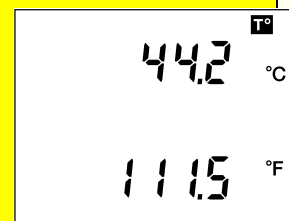
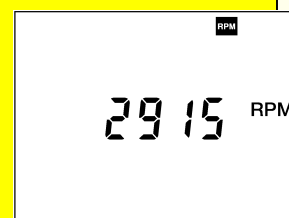
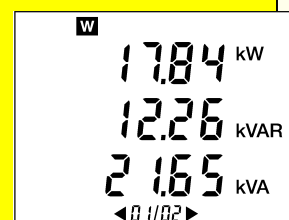
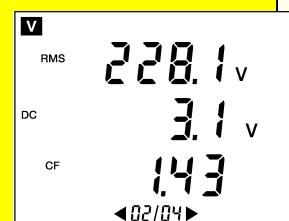
POWER ANALYSER AND MOTOR DIAGNOSTIC TOOLS

The C.A 8220 power and motor maintenance analyser

Among the Qualistar's direct descendants (C.A 8332 & C.A 8334), the C.A 8220 is an AC+DC 600 VRMS single-phase or balanced 3 phase power analyser equipped with a liquid crystal segment screen.

Geared firmly towards electrical engineering, (especially testing of rotating machines), it is designed for technicians and engineers working in maintenance testing teams, and for civil service departments.

The C.A 8220 measures the effective values, powers and disturbance of electrical supply networks. It makes it possible to obtain an instant image of the main characteristics of a network and to test rotating machines (temperature, start-up current and length, coiling impedance, rotation speed).



Compact and shockproof, its user interface ergonomics make it easy and pleasant to use, and enable intuitive use.

Accurate, it is extremely flexible thanks to a broad range of sensors, whose measurements vary from several milliamps to several kilo amperes.

FEATURES and SPECIFICATIONS

- >> **Voltage range** from 6 VRMS to 600 VRMS AC+DC $\pm(0,5\%+2\text{pts})$
- >> **Current range AC** from 5mA to 6500 A $\pm(0,5\%+1\text{pts})$
- >> **Current range DC** from 1 A to 1700 A $\pm(1\%+1\text{pts})$
- >> **Values Min, Max, Moy., Peak (+ et -), CF**
- >> **Main frequency** from 40 Hz to 70 Hz
- >> **Display** Backlit 173 segments LCD
- >> **Single phase and balanced 3 phases**
- >> **Power W, VA, var, DF, THD, Cos ϕ**
- >> **Harmonics (CEI 1000-4-7)** Up to 50th
- >> **Motor speed rotation** from 6 RPM to 120 kRPM $\pm(0,5\%)$
- >> **Temperature (Pt100)** from - 200°C to 850°C $\pm(1\%+10\text{pts})$
- >> **Resistance** from 0,0 Ω to 2000 Ω $\pm(0,5\%+2\Omega)$
- >> **Phase rotation** Yes, and phase order information in three phases mode
- >> **Memory**
- >> **Protection** IP54
- >> **Port RS232**, with USB adaptor
- >> **CEI 61010-1** 600 V, Cat. III
- >> **Power** Batteries, up to 40 hours of use
- >> **Weigh** 840 g (with batteries)
- >> **Size** 211 x 108 x 60 mm



The **Power Analyzer Transfer** software is available on our website, and can be download for free. With this tool, you will be able to transfer, save and export data.

The C.A 8220 can also be use with the **Dataviewer** software (option), which will doubles its possibilities for configuration, data transfer and processing on a PC.

TO ORDER

- ◆ C.A 8220..... **P01.1606.20**
- ◆ C.A 8220 with MN93A clamp..... **P01.1606.21**
- ◆ C.A 8220 with Ampflex 450mm **P01.1606.22**

ACCESSORIES

- ◆ Tests probes 4 mm black and red. . . P01.1018.55
- ◆ Alligator grip black and red P01.1018.48
- ◆ Cord banana 4 mm black and red . . P01.1018.48
- ◆ Clamp MN93A BK P01.1204.34
- ◆ Clamp MN93 BK P01.1204.25
- ◆ Ampflex A193 450 mm BK P01.1205.26
- ◆ Ampflex A193 800 mm BK P01.1205.31
- ◆ Clamp PAC93 BK P01.1200.79
- ◆ Clamp C193 BK P01.1203.23

COMPOSITION

- ◆ **P01.1606.20** : 1 C.A 8220 instrument supplied with 6 mounted AA batteries, 1 red banana lead (straight-straight), 1 black banana lead (straight-straight), 2 x 4-mm test probes (1 red, 1 black), 2 alligator clamps (1 red, 1 black), 1 RS232/USB optical cable.

YOUR DISTRIBUTOR