

AMPLIFICATION CFX Manager™ Software Data Analysis Quick Guide

Quantitation Tab Data Viewing

The amplification chart displays traces of the relative fluorescence collected from each well at every cycle of the experiment.

Choose the fluorophore data you want to display by clicking the fluorophore checkboxes located under the amplification chart (Figure 1).

Click on wells, rows, or columns in the well selector (Figure 1) to display fluorescence traces and data for selected wells. Selected wells are blue; unselected wells are light gray.

Position the cursor over a fluorescence trace, over a well in the well selector (Figure 1, well 3A), over a cell in the data spreadsheet, or over a point on the standard curve to highlight corresponding information in all four locations.

Data Analysis Options

CFX Manager software automatically subtracts the baseline from well data. Select **Settings** from the menu bar, and then select **Baseline Threshold** to change the baseline range for any well.

The software automatically calculates the position of the threshold line. Click and drag the threshold line to manually position the line.

Click the **View/Edit Plate** icon on the toolbar to edit well contents, temporarily exclude wells from analysis, create well groups, and add or remove wells from analysis.

Chart Options

Right-click on any chart to copy or save the image, or to select **Chart Options** to change axis scales or remove grid lines (Figure 2).

Click the **Trace Styles** icon on the toolbar or right-click on any chart to customize the trace colors for specific wells.

Left-click on any chart, then hold down and drag the cursor to zoom in.

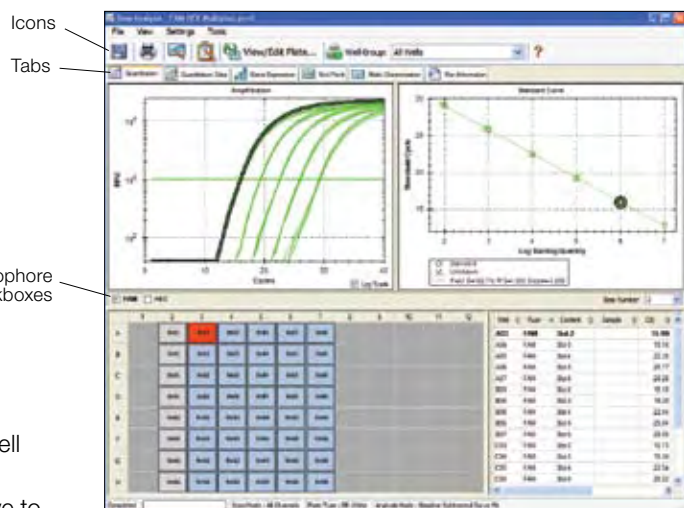


Fig. 1. Quantitation tab in the Data Analysis window shows FAM data for all wells; information for well 3A is highlighted. Tab includes (counterclockwise from top left) the amplification chart, well selector, data spreadsheet, and standard curve.

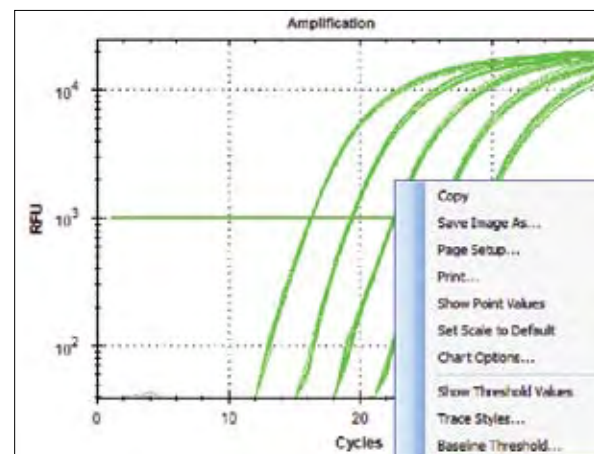


Fig. 2. Pop-up menu revealed by right-clicking on the amplification chart.

Well Group Data Viewing

Use the Select Well Group drop-down menu on the toolbar to view data for a specific well group (Figure 3). The software treats well groups as independent experiments, and each can be analyzed with its own settings and, if applicable, with its own standard curve.

Quantitation Data Tab

Display Options

Click the **Quantitation Data** tab in the Data Analysis window to view numerical data calculations and statistics, including threshold cycle (C_T) for each well and the mean and standard deviation for replicates (Figure 4).

Click on any column header to sort rows based on that column. Right-click on the spreadsheet and select **Sort** to sort rows based on multiple columns.

Left-click on any column header and drag the column to the left or to the right to rearrange the order of the columns in the spreadsheet.

Right-click on the spreadsheet, and select a format to export data as text, XML, or Microsoft Excel file (Figure 4).

Select **Plate** from the drop-down menu under the **Quantitation Data** tab to display well data for a selected fluorophore in a plate grid format.

Creating a Report

Display Options

Click the **Report** icon on the toolbar of the Data Analysis window (Figure 1) to open the Report window (Figure 5).



Report options list

Click checkboxes in the report options list to include specific information in the report, which is displayed in the preview section (Figure 5).

Click **File** on the toolbar and select **Save** to save the report as a PDF or select **Print** to print the report.

Save the report template for use with other data files, if desired.

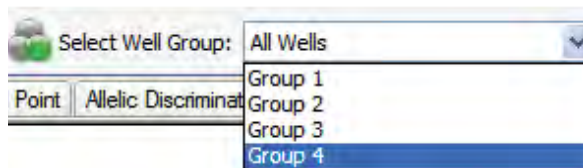


Fig. 3. Well group selection.

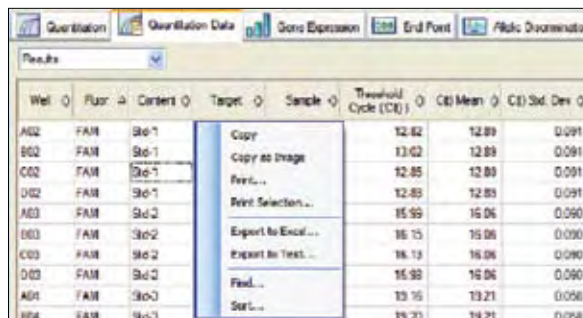


Fig. 4. Quantitation data tab. Inset, pop-up menu is revealed by right-clicking on spreadsheet.

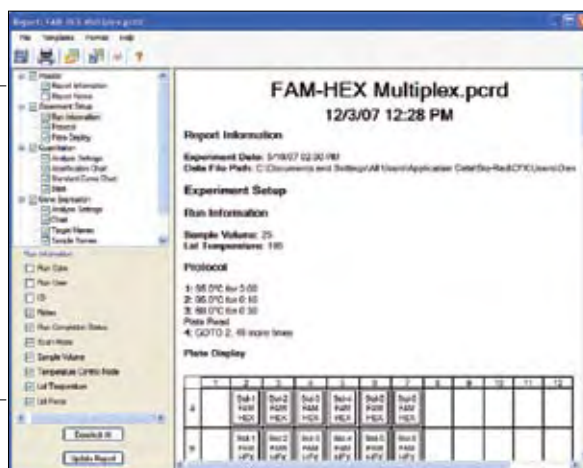


Fig. 5. Report window. Report options list includes checkboxes for choosing information to include in report.

Excel is a trademark of Microsoft Corporation.

Bio-Rad's real-time thermal cyclers are licensed real-time thermal cyclers under Applera's United States Patent No. 6,814,934 B1 for use in research and for all other fields except the fields of human diagnostics and veterinary diagnostics.



Bio-Rad
Laboratories, Inc.

Life Science
Group

Web site www.bio-rad.com **USA** 800 4BIORAD **Australia** 61 02 9914 2800 **Austria** 01 877 89 01 **Belgium** 09 385 55 11 **Brazil** 55 21 3237 9400
Canada 905 364 3435 **China** 86 21 6426 0808 **Czech Republic** 420 241 430 532 **Denmark** 44 52 10 00 **Finland** 09 804 22 00 **France** 01 47 95 69 65
Germany 089 318 84 0 **Greece** 30 210 777 4396 **Hong Kong** 852 2789 3300 **Hungary** 36 1 455 8800 **India** 91 124 4029300 **Israel** 03 963 6050
Italy 39 02 216091 **Japan** 03 6361 7000 **Korea** 82 2 3473 4460 **Mexico** 52 555 488 7670 **The Netherlands** 0318 540666 **New Zealand** 0508 805 500
Norway 23 38 41 30 **Poland** 48 22 331 99 99 **Portugal** 351 21 472 7700 **Russia** 7 495 721 14 04 **Singapore** 65 6415 3188 **South Africa** 27 861 246 723
Spain 34 91 590 5200 **Sweden** 08 555 12700 **Switzerland** 061 717 95 55 **Taiwan** 886 2 2578 7189 **United Kingdom** 020 8328 2000