

BOSCH



Robert Bosch GmbH
Geschäftsbereich Elektrowerkzeuge
D-70745 Leinfelden-Echterdingen

F016L69648 (99.05) 0
Printed in Germany - Imprimé en Allemagne

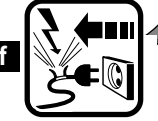
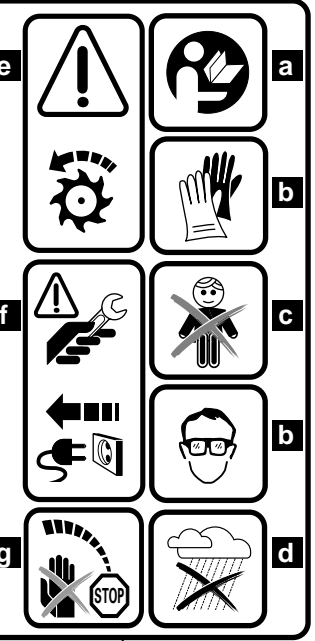
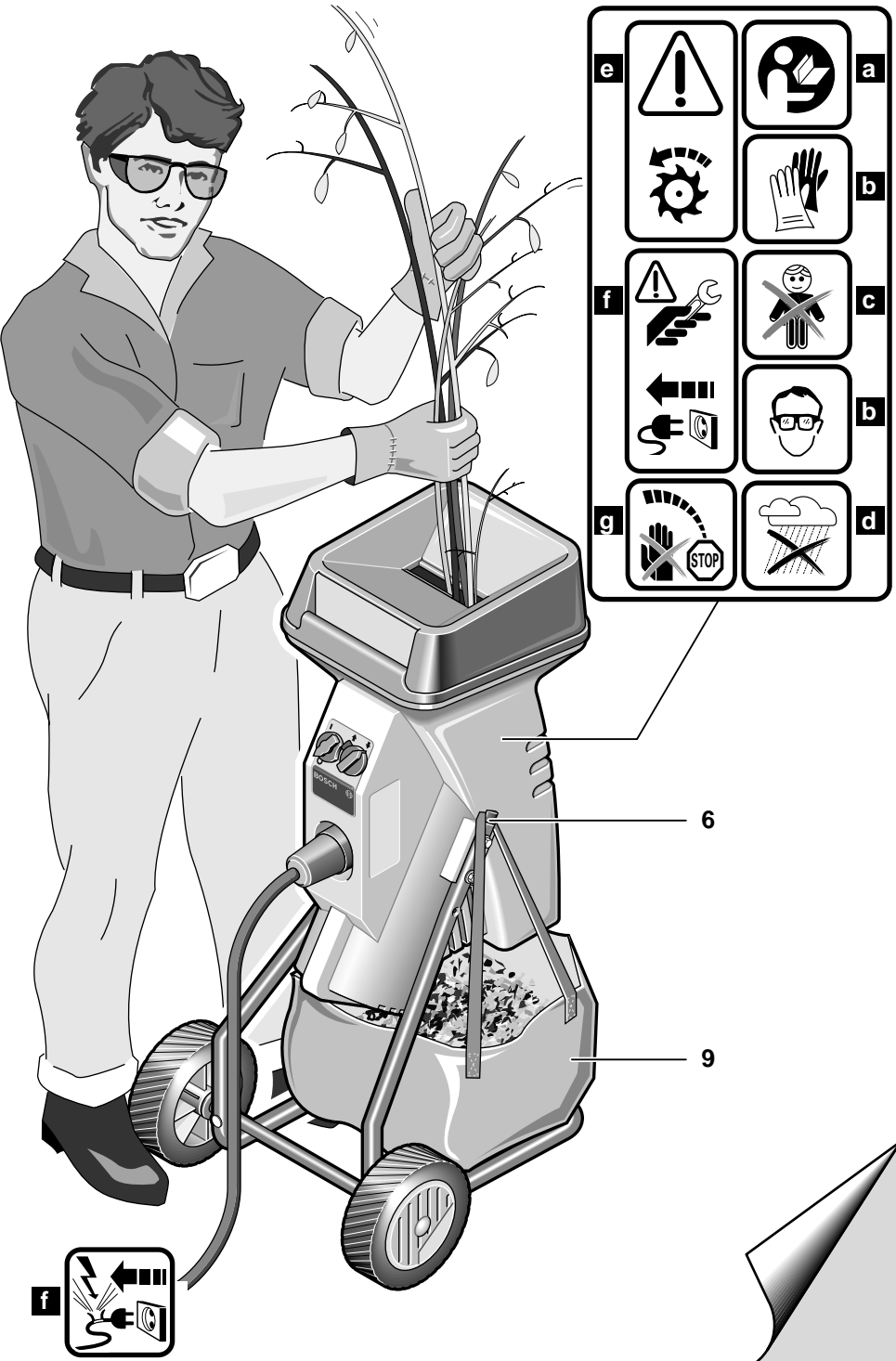


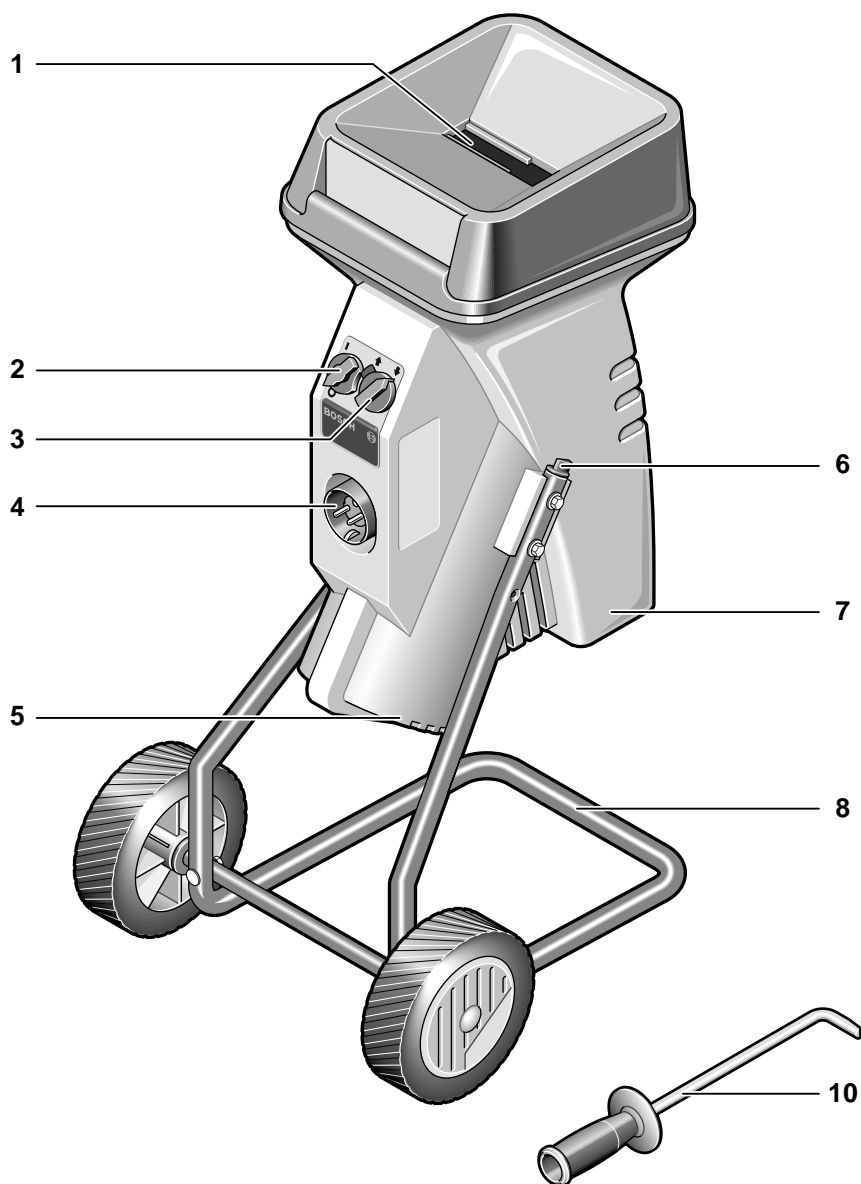
AXT 1600 HP
AXT 2000 HP

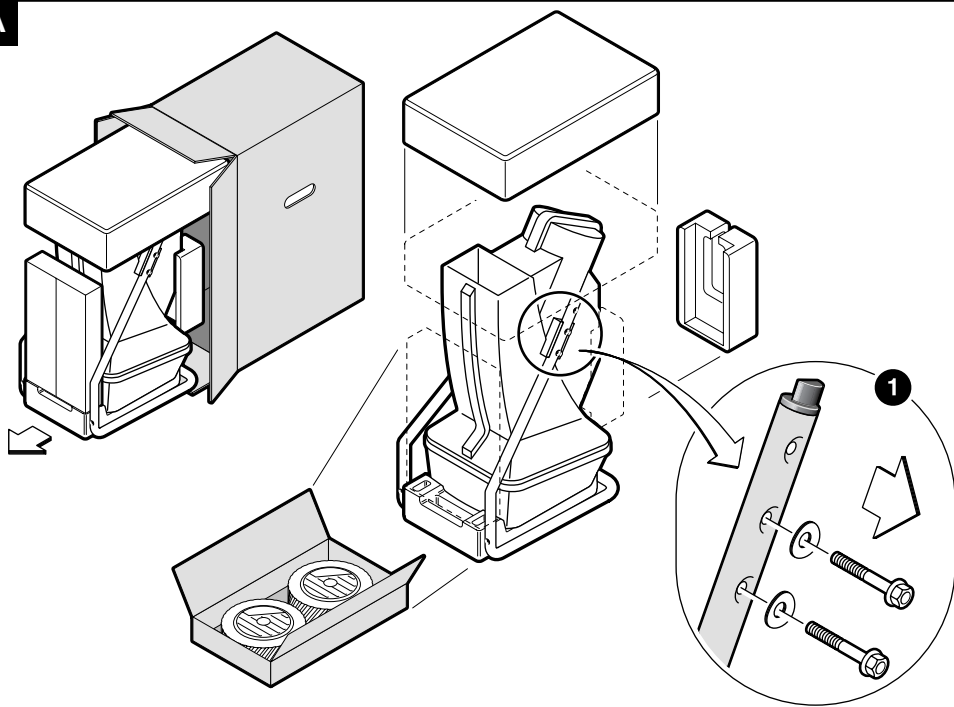
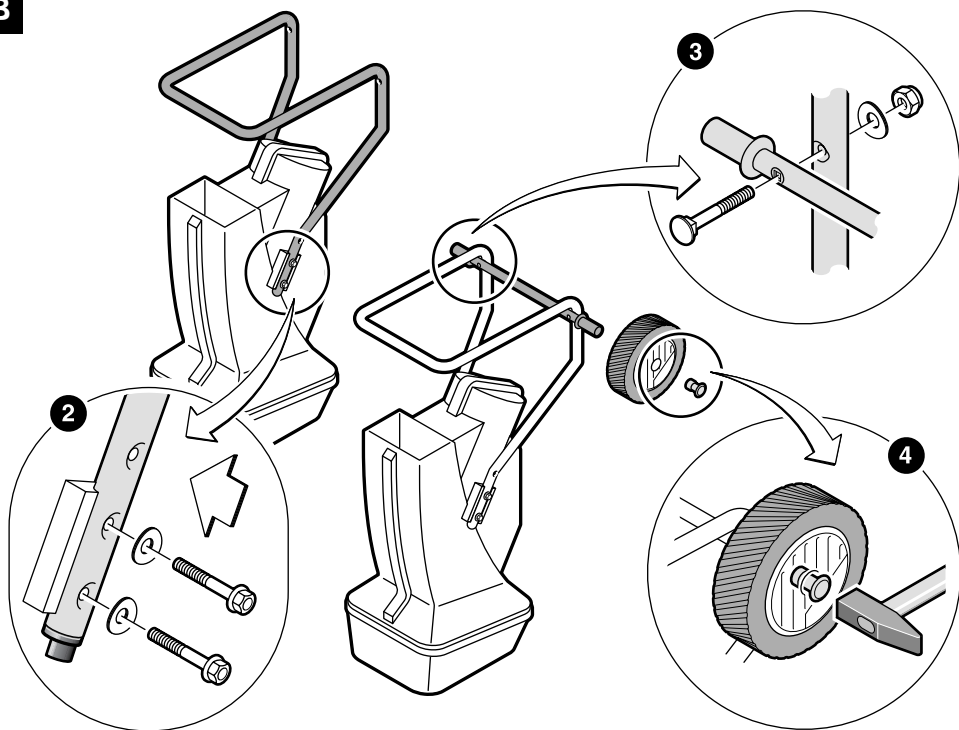
D	69
GB	10 ...13
F	14 ...17
E	18 ...21
P	22 ...25
I	26 ...29
NL	30 ...33
DK	34 ...37
S	38 ...41
N	42 ...45
FIN	46 ...49
GR	50 ...53
TR	54 ...57



BOSCH





A**B**



For Your Safety

GB

- a** Working safely with this machine is possible only when the operating and safety information are read completely and the instructions contained therein are strictly followed. In addition, the general safety instructions in the enclosed booklet must be followed. Before using for the first time, ask for a practical demonstration.
- b** Wear safety glasses, protective gloves, sturdy shoes and long pants.
- c** Keep children away from the machine. Persons under 16 years of age are not permitted to operate this machine. Do not operate the machine unattended.
- d** Do not expose the machine to rain. Do not expose the machine to rain. Only store the machine in a dry place.
- e** Take care when the spiral cutting knives are in operation.
- f** During pauses in the work, when not in use or during work on the machine itself (e. g., changing of the working tools, repairs, cleaning, adjustment), pull the mains plug.
- During operation, do not reach into the feed opening 1 or the ejection chute 7. The machine runs on for approx. 5 seconds after being switched off.**
- Before switching on, the machine must be assembled according to the enclosed instructions.
- If the cable is damaged or cut through while working, do not touch the cable but immediately pull the mains plug. Never use the machine with a damaged cable.
- The machine may be connected only to a properly earthed power system. The socket and extension cable must have a functional protective conductor.
- Connect machines that are used in the open via a residual current circuit breaker with a triggering current of 30 mA maximum. Use only extension cables that are intended for outdoor use and are protected against splash water.
- Do not touch the plug or socket with wet hands.
- Do not driver over, crush or stretch the cable.
- During operation, no other persons or animals should be within a radius of 3 m. The operator is responsible for third persons in the working area.
- Bosch can assure flawless functioning of the machine only when original accessories are used.

Tool Specifications

Silent shredder	AXT 1600 HP	AXT 2000 HP
Part number	0 600 851 2..	0 600 851 4..
Rated power	1600 W	2000 W
Operating mode	S 1	S 6 4/6 min ¹⁾
No-load speed	260 RPM	260 RPM
Capacity max.	100 kg/h ²⁾	115 kg/h ²⁾
Branch diameter	max. 30 mm ²⁾	max. 35 mm ²⁾
Collecting bag	not included, Accessories	
Weight	approx. 21 kg	approx. 22 kg
Safety class	I / ⊕	I / ⊕

1) The S 6 operating mode (40 %) indicates a load profile of 4 min load and 6 min idle time. For practical application, continuous operation is permitted.

2) Depending on the hardness of the wood.

Operating Controls

- 1 Feed funnel
 - 2 ON/OFF switch
 - 3 Rotational direction switch
 - 4 Appliance plug **
 - 5 Ventilation slots
 - 6 Hooks for collecting bag
 - 7 Ejection slot
 - 8 Undercarriage
 - 9 Collecting bag/cover *
 - 10 Pusher/clearing hook
- * Accessories
- ** Country-specific connection

* Not all of the accessories illustrated or described are included as standard delivery.

Noise/Vibration Information

Measured values determined according to RAL UZ 54.

The A-weighted noise levels of the tool are typically: Sound pressure level: 84 dB (A). Sound power level: <91 dB (A).

Use as Intended

This shredder is designed for compostible cutting of fibrous and woody garden waste.

Undercarriage

Remove the machine from the package as shown in illustration A.

Mount the wheels and the undercarriage as shown in illustration B.

Before use


Always use the correct supply voltage: The power supply voltage must match the information quoted on the tool identification plate. Tools with a rating of 230 V can also be connected to a 220 V supply.

The circuit must be protected by fuse with at least 10 A.

When operating the machine with a generator, a unit with a power rating of 3.5 kVA/2800 W is necessary (e. g. Bosch generator units G-3600-series).

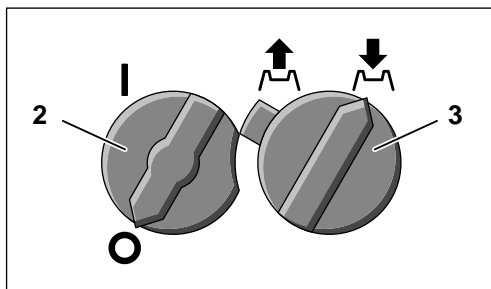
An extension cable with a cross section that is too small causes a distinct reduction in the performance capabilities of the machine. For cables to 25 m in length, a cross section of at least $3 \times 1.5 \text{ mm}^2$ is required, for cables more than 25 m in length, the cross section must be at least 2.5 mm^2 .

Always completely unwind cable reels.

 Always place the machine on firm level ground. During operation, do not tilt or move.

Remove any soil from root balls. Foreign bodies like stones, glass, metals, fabrics, or plastics must not enter the feed funnel since this could damage the spiral cutting knives.

Initial Operation



The rotational direction switch **3** must be turned to the right. The feed funnel **1** must be empty.

Switching on:

Set the on/off switch **2** to "I".

Switching off:

Set the on/off switch **2** to "O".

The motor will coast after switching off!

Rotational direction switch

The rotational direction switch **3** can only be operated when the machine is switched off. Always wait for the machine to be idle before switching it on again. When switching over with the motor running, the direction of rotation remains unchanged.

Right position (↓):

The spiral cutting knives pull in the material and chop it.

Left position (↑):

The spiral cutting knives are operating in reverse direction and jammed material is released.



Longer material standing out from the machine could lash out when being pulled in by the knives! Please keep at safe distance!

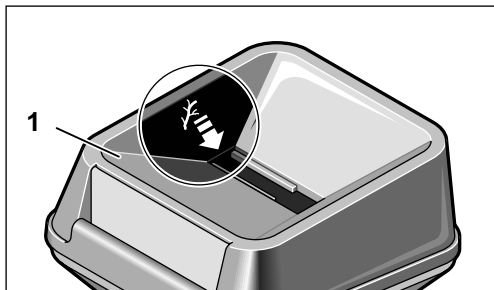
Overload protection

Overloading (e. g. blocking up of the spiral cutting knives) leads to a standstill of the machine after a few seconds. After a short period, the machine can be switched on again. Set the on/off switch **2** to "O" and then back to "I".



In case of blocking spiral cutting knives turn the rotational direction switch **3** to the left position (↑) before switching the machine on again.

Operating Instructions



In order to collect the chopped material, fasten the carrying straps of the collecting bag **9** (accessory) to the two hooks **6**.

Feed the material to be chopped. The material is pulled in by the spiral cutting knives.



Longer material standing out from the machine could lash out when being pulled in by the knives! Please keep at safe distance!

Only insert as much material so that the feed funnel **1** will not be blocked up.

Chop garden waste which has been stored for some days and is wilted and damp alternately with branches.

This prevents the spiral cutting knives from blocking up.

Do not fill soft waste such as kitchen rubbish into the shredder but compost them.

Always feed the material to be chopped from the corner of the feed funnel **1** marked with the arrow.

Widely branched material with leaves must be completely chopped before new material is fed.

Take care that the chopped material can fall freely from the ejection slot **7** – danger of backing up!

The ventilation slots **5** must not be covered by the collecting bag or the chopped material.

Malfunctions

The motor does not run:

- The overload protection has responded.
Turn the rotational direction switch **3** to the left position (backwards) and switch the machine back on after a short period. After the blocking has been removed, turn the rotational direction switch **3** back to the right position.
- Check the power supply cord, the plug and the house fuse.

The material to be chopped is not pulled in:

- The spiral cutting knives are running backwards. Switch over the direction of rotation.
- The material to be chopped is jammed in the feed funnel **1**: Turn the rotational direction switch **3** to the left position (backwards) and switch the machine back on. Pull the material from the feed funnel with aid of the supplied clearing hook **10**. After the blocking has been removed turn the rotational direction switch **3** back to the right position.

Re-feed thick branches such that the knives do not immediately grasp the pre-cut notches again.

The spiral cutting knives are blocked:

Turn the rotational direction switch **3** to the left position and switch the machine on. The spiral cutting knives will now run backwards to release the blocked up material (or the foreign body). After the blocking has been removed turn the rotational direction switch **3** back to the right position.



Longer material standing out from the machine could lash out when being pulled in by the knives! Please keep at safe distance!

Direction of rotation remains unchanged after switch-over:

Change the direction of rotation to the desired position after the machine has come to a complete standstill.

Maintenance and Cleaning

■ Before any work on the machine itself, pull the mains plug.



For safe and proper working, always keep the machine and the ventilation slots clean.

The shredder must not be cleaned with high-pressure cleaners or running water.

The tightness of the fastening screws of the undercarriage should be checked from time to time.

To protect the machine from corrosion when storing for a longer period, treat the spiral cutting knives with Bosch preservation spray (accessory, order no. 1 609 200 399). This spray is harmless to the environment and decomposable.

If the machine should happen to fail despite the care taken in manufacture and testing, repair should be carried out by an authorised customer services agent for Bosch power tools.

For all correspondence and spare parts orders, always include the 10 digit order number from the nameplate of the machine!

Guarantee

We guarantee Bosch equipment in accordance with statutory/country-specific regulations (proof of purchase by invoice or delivery note).

Damage attributable to normal wear and tear, overload or improper handling is excluded from the guarantee.

Claims can be recognised only when the machine is sent, **undismantled**, to the dealer or a Bosch customer service centre for electric tools.

Service and Customer Assistance

Great Britain

Robert Bosch Ltd. (B.S.C.)
P.O. Box 98
Broadwater Park
North Orbital Road
Denham-Uxbridge
GB-Middlesex UB 9 5HJ

☎ Service..... (0 18 95) 83 87 82
☎ Advice line..... (0 18 95) 83 87 91
Fax..... (0 18 95) 83 87 89

Ireland

Beaver Distribution Ltd.
Greenhills Road
IRL-Tallaght-Dublin 24

☎ Service..... (01) 45 15 211
Fax..... (01) 45 17 127

Environmental Protection



Environmental label "**Blue Angel**".
Awarded for extra silent operation.

Recycle raw materials instead of disposing as waste.

Machine, accessories and packaging should be sorted for environment-friendly recycling.

These instructions are printed on recycled paper manufactured without chlorine.

The plastic components are labelled for categorized recycling.

CE Declaration of Conformity

We declare under our sole responsibility that this product is in conformity with the following standards or standardization documents:

EN 60 335, EN 55 014, EN 60 555, DIN 11 004 according to the provisions of the regulations 73/23/EEC, 89/336/EEC, 98/37/EC.

CE 99

Dr. Alfred Odendahl

Dr. Eckerhard Strötgen

Alfred Odendahl *i. V. Strötgen*

Robert Bosch GmbH
Geschäftsbereich Elektrowerkzeuge