



# QC Chart Tool v1.3

## Installation and Configuration Guide

- Step 1. Prepare for installation [2](#)
- Step 2. Install or upgrade Feature Extraction Software [4](#)
- Step 3. Install or upgrade the QC Chart Tool software [4](#)
- Step 4. Configure the QC Chart Tool Database [5](#)
- Step 5. Restore the QC Chart Tool database [6](#)

This guide describes the steps that are needed to install QC Chart Tool software and to configure its database.

This version of QC Chart Tool works with only Feature Extraction v.9.5.3 or later. If you are running Feature Extraction v.9.5.1 or earlier, you will need to upgrade your Feature Extraction software before you install or update QC Chart Tool.

For information on using the QC Chart Tool, refer to the *QC Chart Tool v1.3 User Guide* (G4460-90015).



## Step 1. Prepare for installation

- 1 Check that you have the following capabilities and virtual memory settings.

### Software

#### Operating System

Windows 2000 SP4 or later

Windows XP 32-bit

Windows Server 2003 SP1<sup>\*</sup>

Windows Vista 32-bit<sup>†</sup>

Windows Vista X64<sup>†‡</sup>

Windows XP X64<sup>†‡</sup>

Internet Explorer 5.5 or later

Adobe Acrobat Reader 4.0 or later

Windows Installer 3.1 or later

<sup>\*</sup> Feature Extraction software will run under Terminal Services but only one user will be allowed to run Feature Extraction at any given time.

<sup>†</sup> Feature Extraction software v9.5.3 and QC Chart Tool v1.3 install under Windows Vista 32-bit and 64-bit operating systems.

<sup>‡</sup> Feature Extraction software and QC Chart Tool v1.3 will not install under IA-64 Itanium Architectures, only 64-bit x86 (X64-based PC) architectures.

### Hardware

Pentium III 1.5 GHz or higher (Pentium IV 2.0 GHz or higher recommended)

1 GB RAM (2 GB recommended for high density microarrays [244K or higher] )

20 GB available disk space

- 2 Log onto the system as a user with administrative privileges.
- 3 If you are upgrading to Feature Extraction v.9.5.3 from v.9.5.1 or earlier, and you have QC Chart Tool data that you want to save, back up your database. See “To back up QC Chart Tool Database” in the *QC Chart Tool v.1.3 User Guide*.

The Feature Extraction and QC Chart Tool database format was changed from v.9.5.1 to v.9.5.3. To migrate your QC Chart Tool database to the new format, you will back up your QC Chart Tool database, then restore it at the end of the installation process.

**CAUTION**

If you do not back up your existing QC Chart Tool data, and you are upgrading Feature Extraction from v.9.5.1 or earlier to v.9.5.3 or later, the data that was previously loaded into the QC Tool database will be deleted.

---

## Step 2. Install or upgrade Feature Extraction Software

You must install or upgrade Feature Extraction software to version 9.5.3 before you install or upgrade QC Chart Tool.

- Install or upgrade Feature Extraction software as instructed in the Feature Extraction installation guide.

You can download the Feature Extraction installation guide from <http://www.agilent.com/chem/fe4me>.

## Step 3. Install or upgrade the QC Chart Tool software

QC Chart Tool v1.3 is compatible with Feature Extraction 9.5.3 or later.

- 1 Double-click the **QCChartInstaller.exe** file that you downloaded to your local drive.
- 2 On the Welcome page of the QC Chart Tool for Feature Extraction - InstallShield Wizard, click **Next**.
- 3 Continue to click **Next** to accept the default selections until you get the Ready to Install Program screen.
- 4 Click **Install** to install the software.
- 5 Click **Finish** to close the InstallShield Wizard.

## Step 4. Configure the QC Chart Tool Database

Do this step if you are installing QC Chart Tool for the first time. If you are upgrading to QC Chart Tool v1.3 from a previous version and the QC Chart DB is already configured, then skip this step.

- 1 Open QC Chart Tool
- 2 Click **Configure > Database Settings**.
- 3 Complete the **QC Chart Database Settings** dialog box:
  - a Open the Feature Extraction 9.5.3 program, click **Help > About**, then under **Product System**, next to **DB Connection**, copy the name between **SERVER=** and **;DATABASE**.

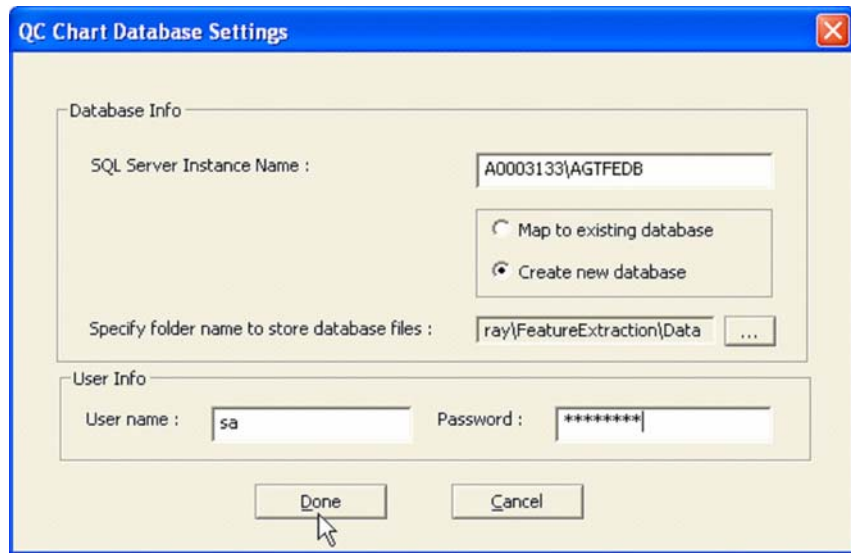
In [Figure 1](#) below, the server name to copy is **A0003133\AGTFEDB**.



**Figure 1** SQL Server Instance Name selected from the Feature Extraction About message box.

- b Paste the server name into the **SQL Server Instance Name** text box in the QC Chart Database Settings window. See [Figure 2](#).
- c Click the **Create new database** radio button
- d Click the ... button next to the **Specify folder name to store database files** text field, then click **OK** to accept the default folder **C:\Program Files\Agilent\MicroArray\FeatureExtraction\Data\MSSQL.1\MSSQL\Data**, or select a different folder and click **OK**.
- e Type **sa** in the **User name** text box.
- f Type **#Welcome\$** into the **Password** text box.
- g Click **Done** to close the QC Chart Database Settings window.

## Step 5. Restore the QC Chart Tool database



**Figure 2** QC Chart Database Settings dialog box

If you need to map the tool to some other user's database, repeat this process from [step 2](#) with these exceptions:

- Change **SQL Server Instance Name** to the appropriate machine name.
- Select **Map to existing database**.

## Step 5. Restore the QC Chart Tool database

Do this step if you backed up your QC Chart Tool database and you upgraded to Feature Extraction 9.5.3 or later from 9.5.1 or earlier.

- Restore the database. See "To restore the QC Chart Tool Database" in the *QC Chart Tool v1.3 User Guide*.



**[www.agilent.com](http://www.agilent.com)**

© Agilent Technologies, Inc. 2007

Printed in USA

Second Edition, September 2007



G4460-90014



**Agilent Technologies**