



立即
在MyBosch上
为您的电器注册，
免费获得以下福利：
[bosch-home.cn/
mybosch](https://bosch-home.cn/mybosch)

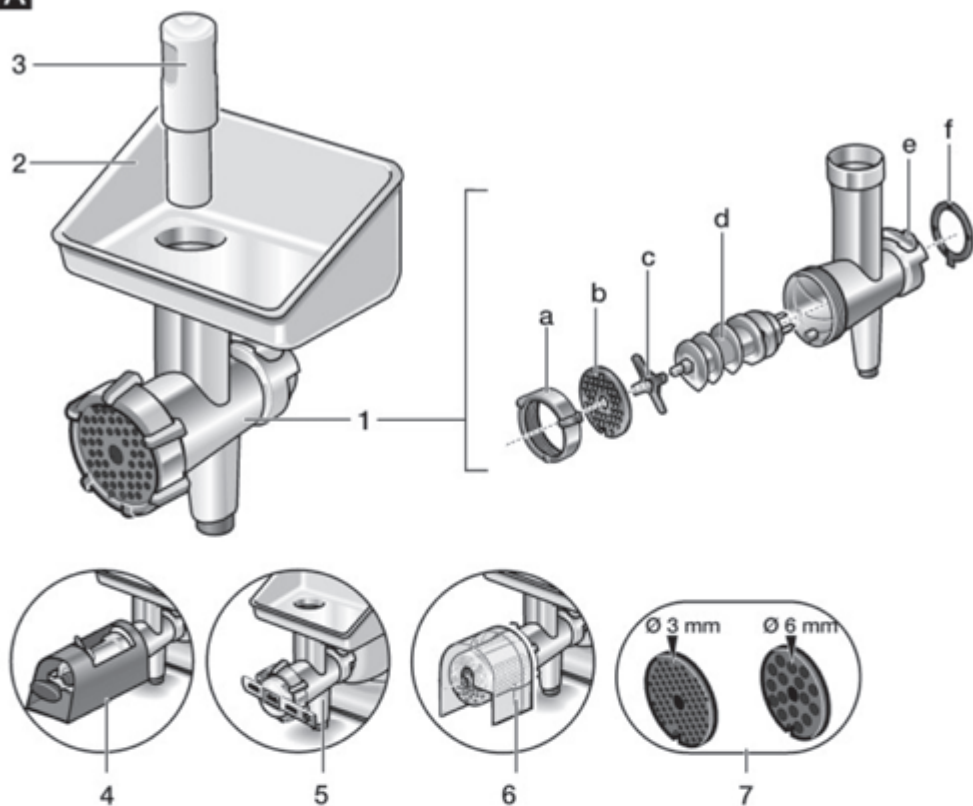
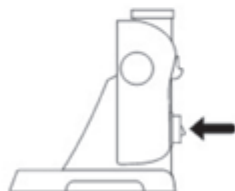
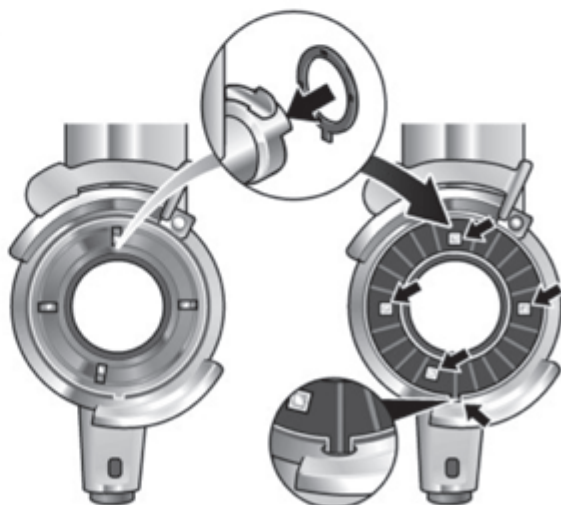


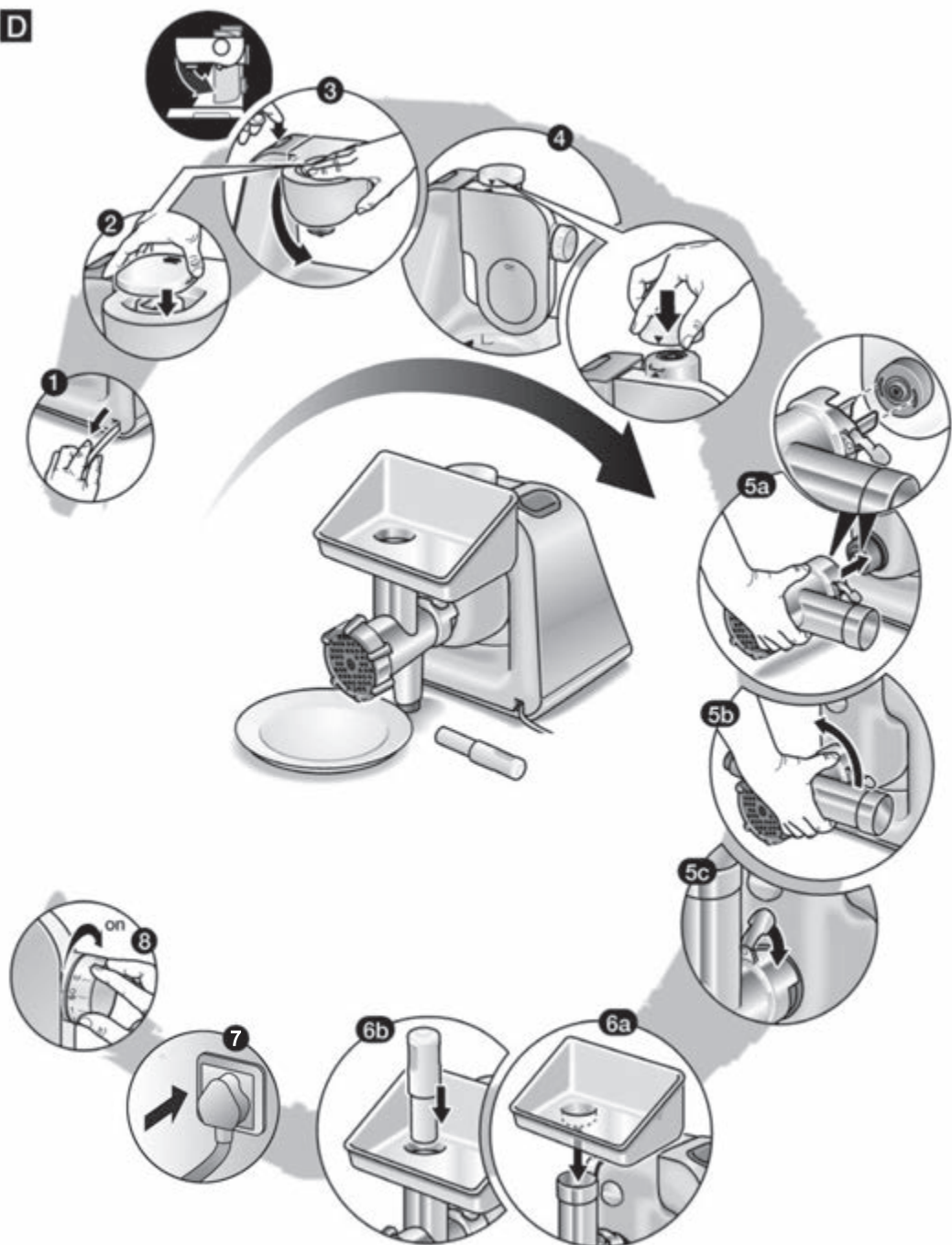
绞肉附件

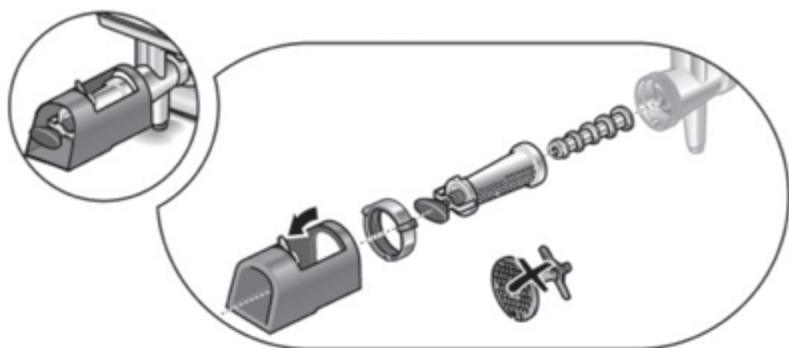
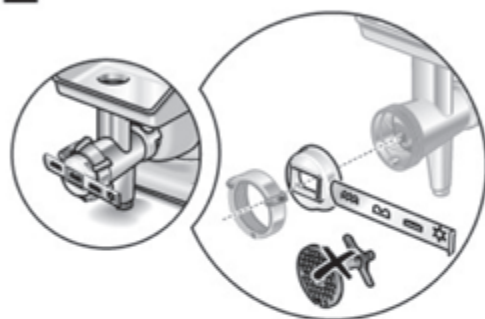
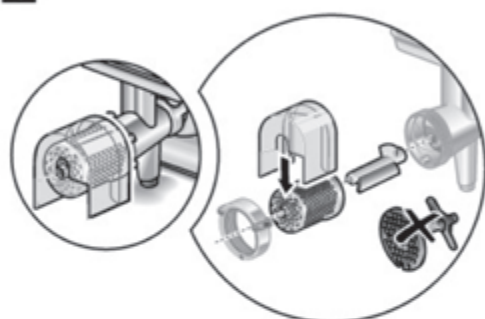
MUZ5FW1CN

| | | | |
|------|--------------------|-------------|---|
| [zh] | 使用说明书 | 碎肉附件 | 5 |
| [en] | Instruction manual | Meat mincer | 8 |

使用产品前请仔细阅读本使用说明书，并请妥善保管

A**B****C**

D

E**F****G**

安全须知

配件适用于食品处理机 MUM5...

按照食品处理机 MUM5... 的使用说明书进行操作。

该电器适用于切碎及混合生熟肉类、培根、禽肉和鱼肉。不得将其用于加工其他物品或物质。若在制造商准许的使用范围内,则附件可用于其他应用。

电器安全说明

⚠ 有受伤危险

请勿将手伸入进料管内,应始终用推料杆来添加更多原料。在传动装置尚未处于停顿状态之前,请勿安装/拆卸碎肉机。

⚠ 重要信息!

只能在指定的工作位置使用绞肉附件。绞肉附件必须完全组装好才能使用。切勿将绞肉附件组装到底座装置上。

原产地:

斯洛文尼亚

总经销商:

博西家用电器(中国)有限公司

中国江苏省南京市鼓楼区清江南路18号3幢

全国统一客户服务热线:

400 885 5888

客户服务电子邮箱:

careline.china@bshg.com

公司网站:

www.bosch-home.cn

概述

图 A:

1 碎肉机附件

a 螺纹环

b 孔盘
(孔径 4.5 mm)

c 刀片

d 带驱动器的蜗轮

e 安全锁

f 门密封圈

2 装料盘

3 推杆

可选附件

4 果浆附件

5 维也纳饼干附件

6 研磨附件

7 孔盘

(孔径 3 mm 和 6 mm)

图 B:

工作位置

过载保护

为防止因绞肉附件过载而对电器造成严重损坏,驱动器上带有凹口(预先确定了强度极限)。若发生过载,驱动器会自动断裂。但是,驱动器也可轻松更换。新驱动器可向客服购买。

- 拧开蜗轮上的固定螺丝。
- 更换驱动器。
- 拧紧固定螺丝。

操作电器


在首次使用前彻底清洁绞肉附件,请参见“清洁和保养”。

重要信息

使用说明中有关工作速度的建议参考值适用于带有 7 速旋转开关的电器。对于带有 4 速旋转开关的电器,您可以参考 7 速旋转开关值后面括号中对应的值。

- 按照指定顺序组装碎肉机附件(图 A)。请勿将螺纹环完全拧紧。
- 插入密封件。记录下位置(图 C)!

图 D:

- 按释放按钮并将旋转臂移动到位置 4。
- 将绞肉附件连接到传动装置。
- **记录下驱动器 (1d) 相对于驱动装置的位置。**若需要,请稍稍转动驱动器。要执行该操作,螺纹环不能被拧紧!
- 逆时针转动绞肉附件。
- 按下锁止杆。
- 现在将螺纹环拧紧。
- 连接装料盘。
- 在出料口下方放置一个碗或盘子。
- 插上电源插头。
- 将旋钮调至 7 (4) 档。
- 将要加工的食物放入装料盘中。
- 用推料杆推入原料。

⚠ 警告!

请勿加工骨头。

提示:制作鞑靼牛排时可用碎肉机加工两遍。

使用电器后

- 用旋转开关关闭电器。
- 提起锁止杆。
- 顺时针转动绞肉附件并将其卸下。
- 清洁碎肉机。

清洁和维修

注意!

请勿使用磨蚀性清洁剂。否则可能会损坏表面。

碎肉机及各零部件不可用洗碗机清洗。

- 拆卸相关部件。
- 手动冲洗各零部件并立即晾干。

可选附件

(经销商处有售)

⚠ 警告!

务必在未安装刀片和绞肉片的情况下装配件。请遵循有关“安全须知”、“使用后”或“清洁和维修”的所有上述说明。

果浆附件

用于榨汁,如浆果、西红柿、苹果、梨、玫瑰果(榨汁前先将玫瑰果煮 1 小时)。分离出的果肉特别适合制作果酱。

图 E:

- 按照碎肉机附件的方法进行准备。在组装水果榨汁附件时要注意需要用到的零部件及组装顺序。
- 首先尽量拧松固定螺丝,以便让果肉在流出时含有一定的水分。
- 然后调节固定螺丝,直到果肉在流出时达到水分含量要求。
- 将要加工的食物放入装料盘中。用推料杆推入原料。
- 将旋钮调至 7 (4) 档。

维也纳饼干附件

用于制作饼干面团或酥类糕点。

图 F:

- 按照碎肉机附件的方法进行准备。在组装饼干附件时要注意需要用到的零部件及组装顺序。
- 将要加工的面团放入装料盘中。用推料杆推入原料。
- 将旋转开关旋至 4 (2) 或 5 (3) 档,具体取决于面团的稠度。
- 用糕点切刀将电器加工出的成形面团切开。若出面团的速度太快,直接关闭食品处理机即可。

研磨附件

用于磨碎杏仁、坚果和干面包或圆面包。

警告!

只能加工数量较少的干坚果和杏仁!

图 G:

- 按照碎肉机附件的方法进行准备。在组装磨碎附件时要注意需要用到的零部件及组装顺序。
- 将要加工的食物放入装料盘中。用推料杆推入原料。
- 将旋转开关旋至 3 (2) 或 4 (3) 档,具体取决于食物的硬度。

保留变更权利。

For your safety

The accessories are suitable for the food processor MUM5... .
Follow the operating instructions for the food processor MUM5... .
This appliance is suitable for mincing and mixing raw or cooked meat, bacon, poultry and fish. It must not be used for processing other objects or substances. Other applications are possible if the accessories approved by the manufacturer are used.

Safety instructions for this appliance

Risk of injury

Do not reach into the feed tube, always use the pusher to add more ingredients. Do not attach / remove the mincer until the drive is at a standstill.

Important!

Use the mincer in the specified operating position only. The mincer must be completely assembled before use. Never assemble the mincer attachment on the base unit.

Country of origin:

Slovenia

Exclusive distributor:

BSH Home Appliances (China) Co., Ltd.
Building 3, No. 18 Qingjiang South Road,
Gulou District, Nanjing, Jiangsu Province,
P.R. China

Careline:

400 885 5888

Service E-mail:

careline.china@bshg.com

Company website:

www.bosch-home.cn

Overview

Figure :

1 Mincer attachment

- a Threaded ring
- b Perforated disc
(hole diameter 4.5 mm)
- c Blade
- d Worm gear with driver
- e Locking lever
- f Seal

2 Filler tray

3 Pusher

Optional accessories

4 Fruit press attachment

5 Viennese whirl attachment

6 Grater attachment

7 Perforated disc (hole diameter 3 mm and 6 mm)

Figure :

Operating position

Protection from overload

To prevent serious damage to your appliance if the mincer is overloaded, the driver has a notch (predetermined breaking point). If an overload occurs, the driver breaks instead. However, the driver can easily be replaced. A new driver is available from customer service.

- Unscrew fastening screw on the worm gear.
- Replace driver.
- Tighten fastening screw.

Operating the appliance


Thoroughly clean the mincer before using for the first time, see "Cleaning and care".

Important information

In these instructions for use the recommended reference values for the operating speed refer to appliances with a 7-setting rotary switch. For appliances with a 4-setting rotary switch you can find the values in brackets after the values for a 7-setting rotary switch.

- Assemble mincer attachment in the indicated sequence (**Fig. A**). Do not fully tighten threaded ring.
- Insert seal. Note position (**Fig. C**)!

Figure D:

- Press the Release button and move the swivel arm to position 4. 
- Connect mincer to the drive.
Note position of the driver (1d) with respect to the drive. If required, turn the driver slightly. To do this, the threaded ring must not be screwed tightly!
- Turn mincer anti-clockwise.
- Press down locking lever.
- Now tighten the threaded ring.
- Attach filler tray.
- Place a bowl or plate under the outlet opening.
- Insert the mains plug.
- Set rotary knob to setting 7 (4).
- Place the food to be processed in the filling tray.
- Use the pusher to push in ingredients.

Warning!

Do not process bones.

Tip: Process steak tartare through the mincer twice.

After using the appliance

- Switch off the appliance with the rotary switch.
- Lift up locking lever.
- Rotate the mincer in a clockwise direction and remove.
- Clean mincer.

Cleaning and servicing

Attention!

Do not use abrasive cleaning agents. Surfaces may be damaged.

Mincer and individual parts are not dishwasher-proof.

- Loosen threaded ring and disassemble attachment.
- Rinse individual parts by hand and dry immediately.

Optional accessories

(available from dealers)

Warning!

Always assemble the accessories without blades and perforated discs. Follow all instructions mentioned above concerning "For your safety", "After work" or "Cleaning and Servicing".

Fruit press attachment

for pressing e.g. berries, tomatoes, apples, pears, rosehips (cook rosehips for 1 hour before pressing). Extracted fruit pulp is especially suitable for making jam.

Figure E:

- Preparation as described for mincer attachment. Note required individual parts and sequence when assembling the fruit press attachment.
- First undo the fastening screw as far as is required to allow the pulp to flow out while still moist.

en Optional accessories

- Then adjust the fastening screw until the pulp flows out with the required moisture.
- Place the food to be processed in the filling tray. Use the pusher to push in ingredients.
- Set rotary knob to setting 7 (4).

Viennese whirl attachment

for shaping biscuit dough or short pastry.

Figure E:

- Preparation as described for mincer attachment. Note required individual parts and sequence when assembling the biscuit attachment.
- Place the dough to be processed in the filling tray. Use the pusher to push in ingredients.
- Turn rotary switch to setting 4 (2) or 5 (3) depending on dough consistency.
- Separate the shaped dough coming out of the appliance with a pastry cutter. Briefly switch off the food processor if the dough comes out too quickly.

Grater attachment

for grating almonds, nuts and dried bread or bread rolls.

Warning!

Process only dry nuts and almonds in small quantities!

Figure G:

- Preparation as described for mincer attachment. Note required individual parts and sequence when assembling the grating attachment.
- Place the food to be processed in the filling tray. Use the pusher to push in ingredients.
- Turn rotary switch to setting 3 (2) or 4 (3) depending on hardness of the food.

Subject to alterations.

[illegible]



感谢您购买博世家电!

立即在MyBosch上为您的电器注册，便可直接获得如下福利：

- 专家级电器使用提示与技巧
- 保修延长选项
- 附件和备件折扣
- 易于获得数字手册和所有电器数据
- 便于享受博世家电服务

注册免费而简单 - 同样针对移动电话：

www.bosch-home.cn/mybosch

BOSCH
HOME APPLIANCES
SERVICE

需要帮助吗？ 可以从此处获取。

针对博世家电的专家级建议，需要博世家电专家帮助解决问题或维修。
了解博世家电支持您的各种方式。

www.bosch-home.cn/service

BSH Hausgeräte GmbH

Carl-Wery-Straße 34,
81739 München, GERMANY

原产地：斯洛文尼亚

总经销商：博西家用电器(中国)有限公司

地址：中国江苏省南京市鼓楼区清江南路18号3幢

客户服务热线：400 885 5888

客户服务电子邮箱：careline.china@bshg.com

www.bosch-home.cn



8001208475

(010330)