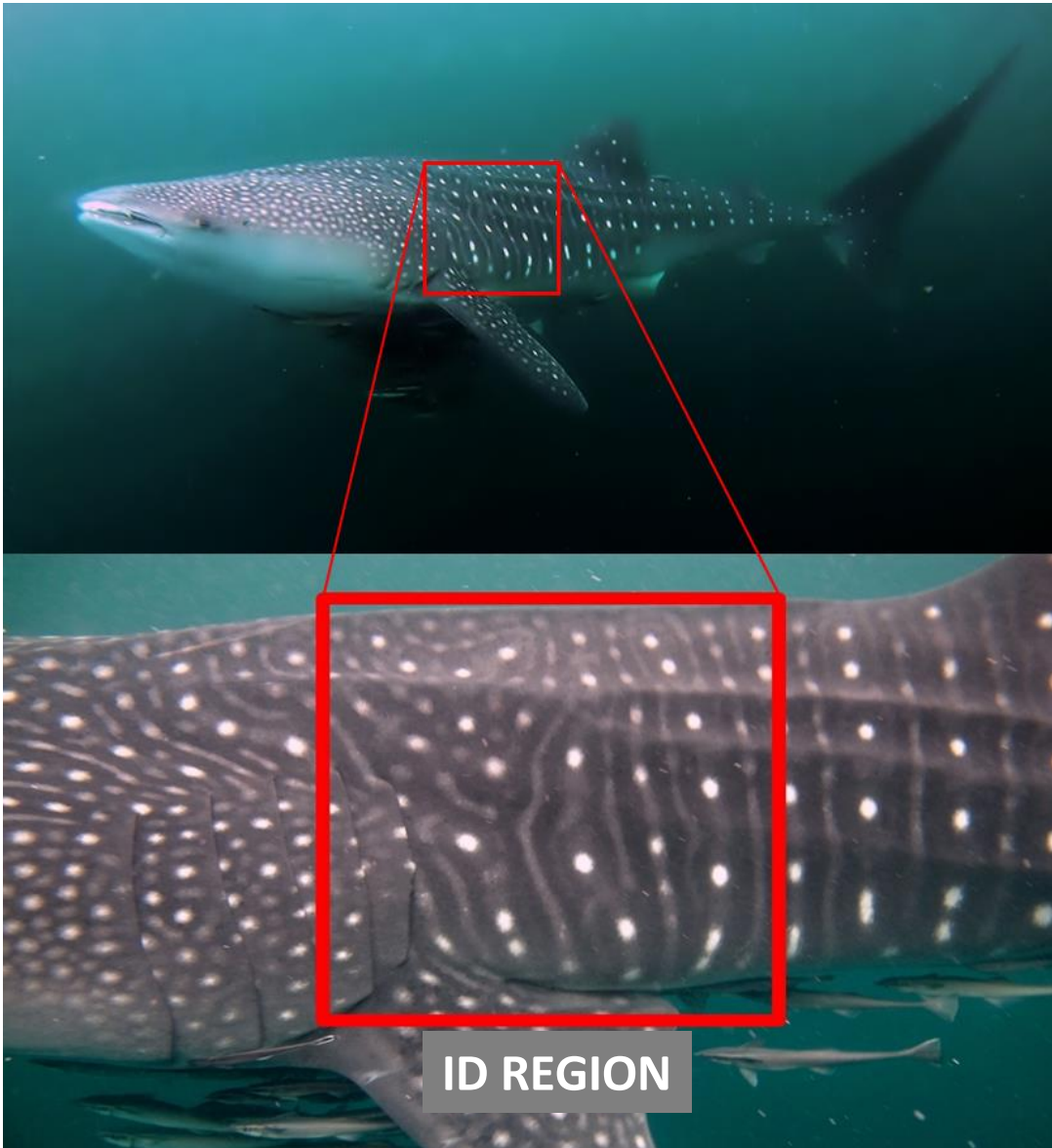


# WHALE SHARK PHOTO ID GUIDE



The spot pattern on the body of the whale shark is unique for each individual, and it didn't change as the whale shark grows older. Just like fingerprints in human. By photographing the ID region of the whale sharks, behind the left and right gills above the left pectoral fins (shown by a red box), and compare it to our existing database, you would be contributing towards our effort in monitoring Kaimana's whale shark population.

## Tips on taking a good ID shot:

1. Use your camera's highest resolution
2. Take the picture perpendicular to the spot patterning in the ID region
3. It could be a photograph or even a screen grab from the video
4. Take a note on the location, date, and time when the whale shark is observed
5. Send us your ID shots!

Photo ID images could be sent by email to:

Abdi Hasan ([ahasan@conservation.org](mailto:ahasan@conservation.org))

*Elasmobranch Science and Monitoring Senior Officer*

Conservation International Indonesia