

ZTE CDMA 1X USB modem User Guide

(Version: V2.0-TY)

This user guide applies to the ZTE CDMA 1X USB modem of MG870.

Copyright Statement

Copyright © 2005 by ZTE Corporation

The copyright of this User Manual belongs to ZTE Corporation and under the protection of Copyright Law of the People's Republic of China and other relative laws.

No part of this publication may be excerpted , reproduced, translated or utilized in any form or by any means (electronic or mechanical , including photocopying and microfilm) without prior written permission from ZTE Corporation. Any violation behavior will be punished.

The information in the document is subject to change without notice. At the same time we reserve the right to revise or recall the User Manual.

If there is anything unclear in this manual, please contact us or our agent or seller.

Contents

| | |
|-----------------------------------|----|
| 1. Introduction..... | 1 |
| 2. Specifications..... | 1 |
| 3. Care for your USB modem..... | 1 |
| 4. Features..... | 2 |
| 5. Setup and Uninstall..... | 3 |
| 5.1 System Requirements..... | 3 |
| 5.2 Setup for Windows 2000..... | 3 |
| 5.2.1 Setup..... | 3 |
| 5.2.2 Uninstall..... | 7 |
| 5.3 Setup for Windows XP..... | 8 |
| 5.3.1 Setup..... | 8 |
| 5.3.2 Uninstall..... | 13 |
| 6. The Main Window and Icons..... | 15 |
| 7. Connect/Disconnect..... | 16 |
| 8. Connection Record..... | 17 |
| 9. Voice call..... | 18 |
| 10. Call History..... | 19 |
| 11. Send Short Messages..... | 20 |
| 12. Read Short Messages..... | 21 |
| 13. Phone Book..... | 22 |
| 14. Settings..... | 23 |
| 15. Trouble Shooting..... | 24 |

1. Introduction

ZTE CDMA 1X USB modem fits into a standard USB interface and can function as a wireless network card, a modem, and a mobile phone. This modem allows you to connect to the Internet, send and receive SMS messages, and make phone calls, without the need of a network cable or phone line.

With the design of the R-UIM card separate from the body, ZTE CDMA 1X USB modem can make the operation more flexible.

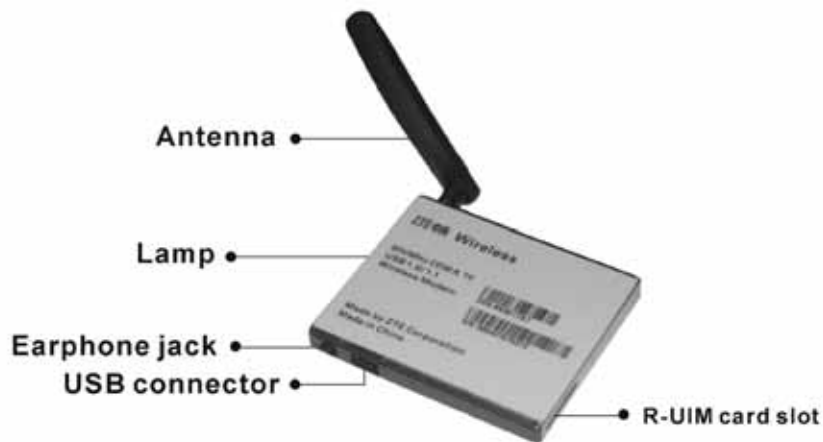
2. Specifications

| | |
|---------------------------|---|
| Transmit Frequency | 824~849MHz |
| Receive Frequency | 869~894MHz |
| Freq. Stability | FA±300Hz |
| Dimension | 66*55*7.3 mm |
| Weight | 95g |
| Data Transmission | MAX 153.6 kbps |
| Voltage | 5V |
| Current | Dormancy: 90mA Normal: 250mA Maximum: 850mA |
| Transmitter Power | 200mW |

3. Care for your USB modem

- Protect the USB modem from liquids, dust, and excessive heat.
- Optimal signal strength is usually obtained when the antenna is perpendicular to the modem. The antenna should bend easily. Do not forcefully bend the antenna or plug the antenna in and out ZTE CDMA 1X USB modem frequently. ZTE shall not be held responsible for the loss due to user's disoperation.
- Do not operate the ZTE CDMA 1X USB modem near any equipment which may be susceptible to electromagnetic interference.

4. Features



Your ZTE CDMA 1X USB modem may need R-UIM card. Contact your provider to get the information about if your ZTE CDMA 1X USB modem need or need not the R-UIM card. Please insert the R-UIM card to your ZTE CDMA 1X USB modem if it needs.

Insert R-UIM card to ZTE CDMA 1X USB modem (only for those who need R-UIM card)



5. Setup and Uninstall

5.1 System Requirements

The ZTE CDMA 1X USB modem is supported on:

- Windows 2000
- Windows XP

To install the ZTE CDMA 1X USB modem, you will require these system resources at the minimum:

| | |
|---------------|--------------------------------|
| CPU | Pentium-II/233MHz |
| USB interface | 1.0/1.1 |
| Disk Drive | CD-ROM (for installation only) |
| Memory | 64 MB |
| Disk Space | 30 MB |

5.2 Setup for Windows 2000

5.2.1 Setup

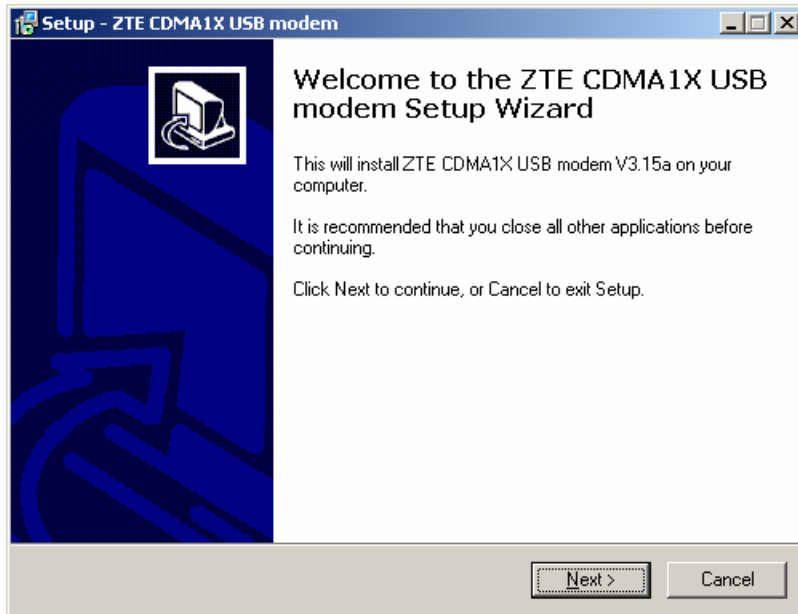
Note:

Don't insert the ZTE CDMA 1X USB modem before setup.

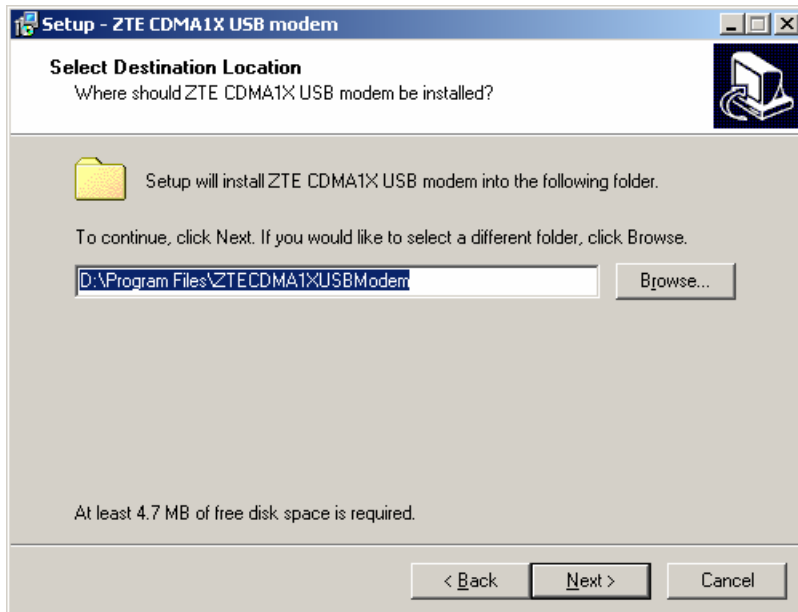
1. Please find "autosetup.exe" first in ZTE CDMA 1X USB modem CD, and double click the icon of autosetup.exe, then choose "English" when the picture displayed in the screen.



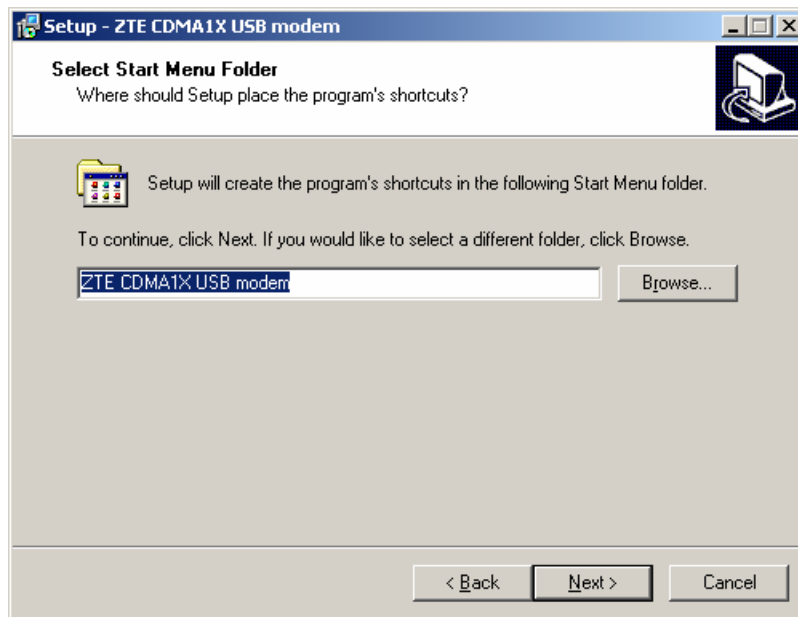
2. When you see this window, please click “Next”.



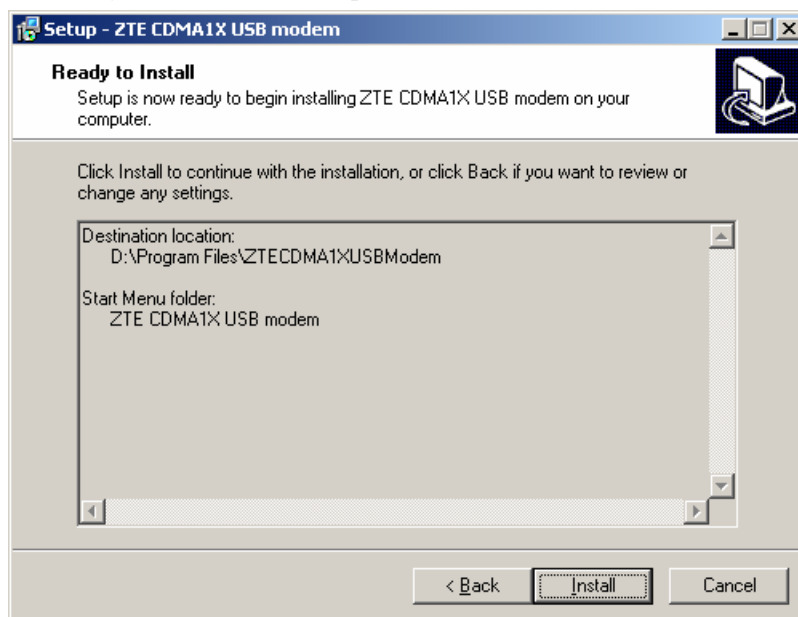
3. Select the location where the program is to be installed, then click “Next”.



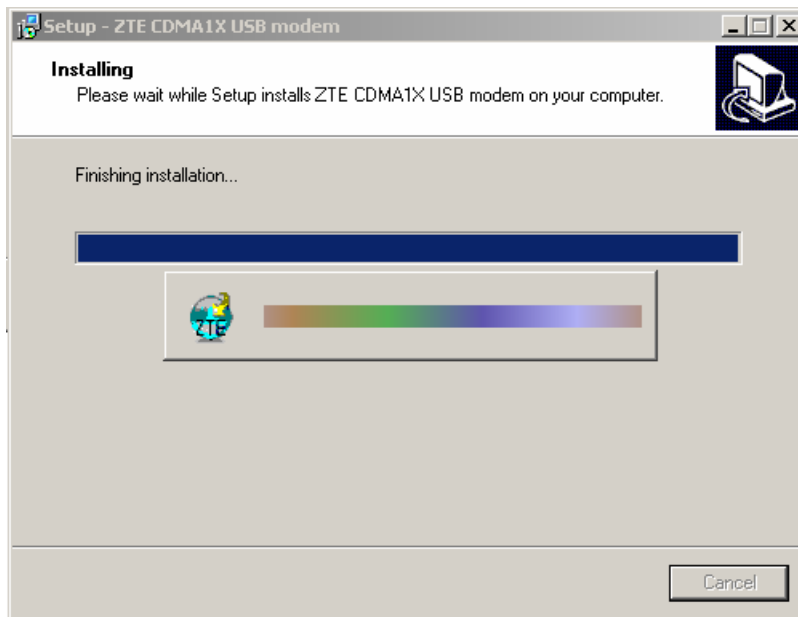
4. Select start menu folder, then click “Next”.



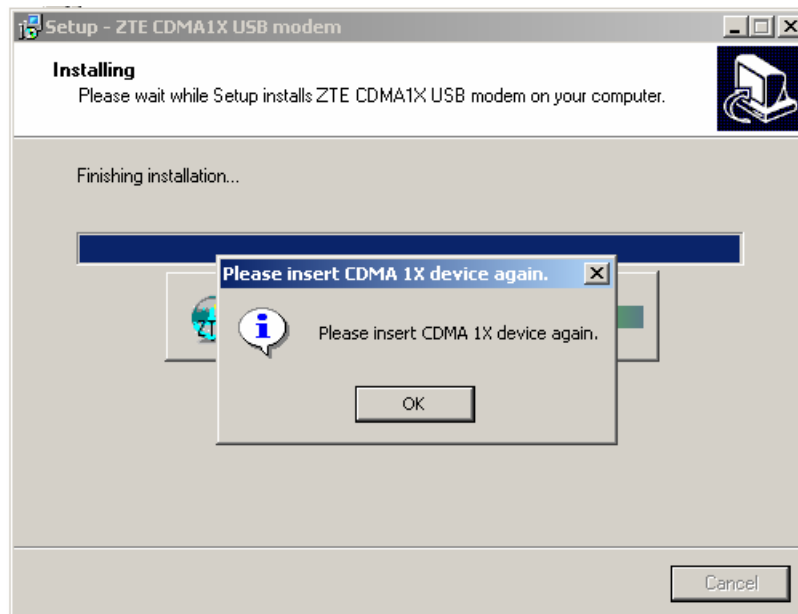
5. When you see this window, please click “Install”.



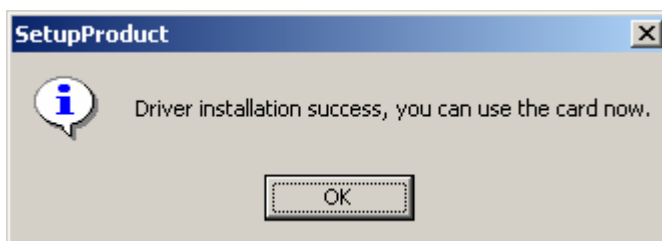
6. Please wait.



7. Please insert the ZTE CDMA 1X USB modem. (If your USB modem is in the USB interface, please insert it again)



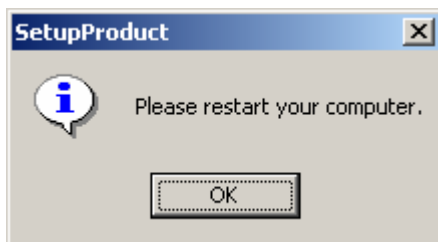
8. Please wait for updating the driver. When driver installed successfully. Click "OK".



9. Click “Finish” to close the last screen of the wizard.

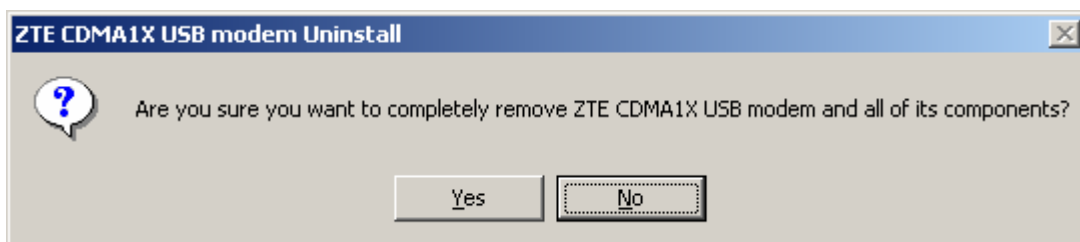


10. Restart your computer.

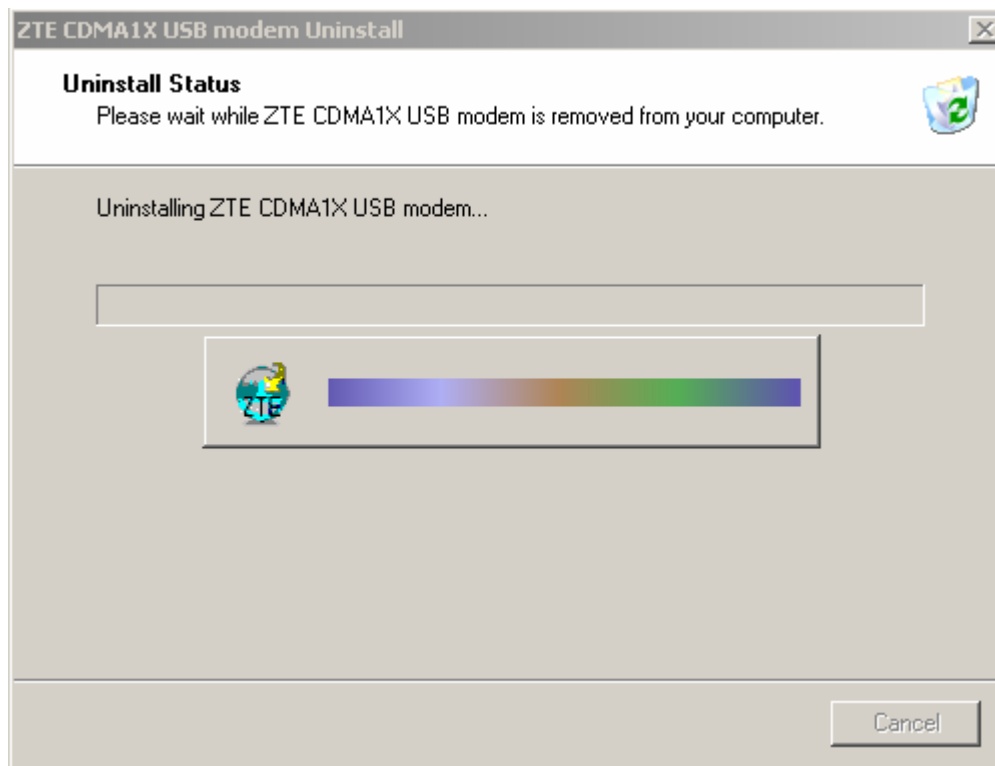


5.2.2 Uninstall

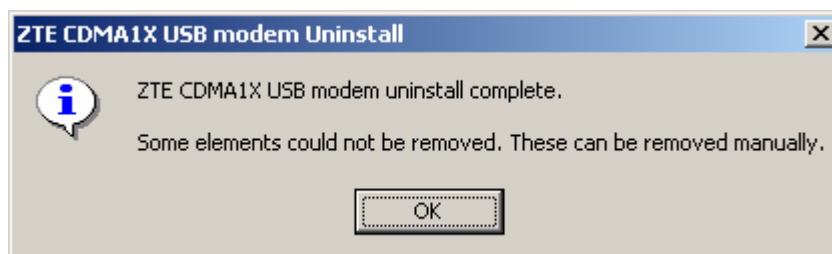
1. Select Start Programs→ ZTE CDMA1X USB modem → Uninstall ZTE USB modem. You will be asked if uninstall the modem. Click “Yes”.



2. Please wait.



3. Click “OK” when you are notified that uninstall is complete.



5.3 Setup for Windows XP

5.3.1 Setup

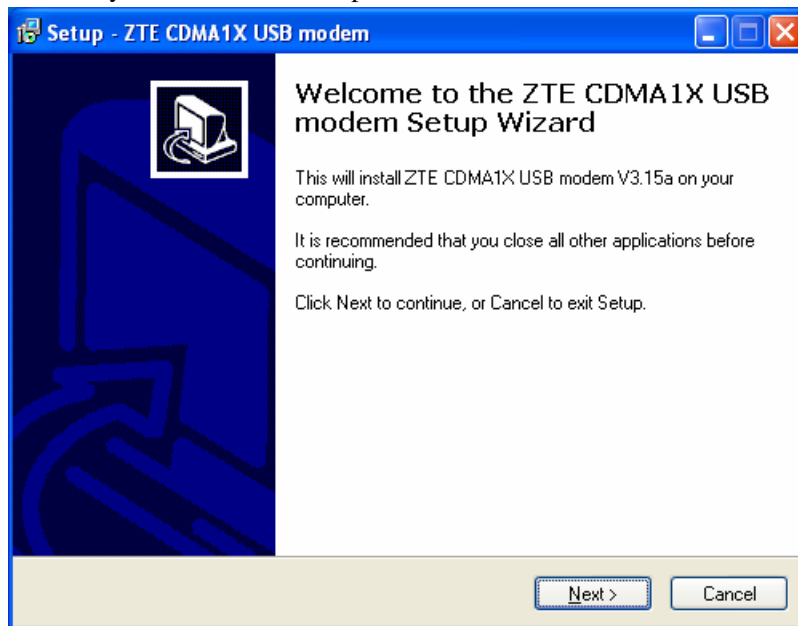
Note:

Don't insert the ZTE CDMA 1X USB modem before setup.

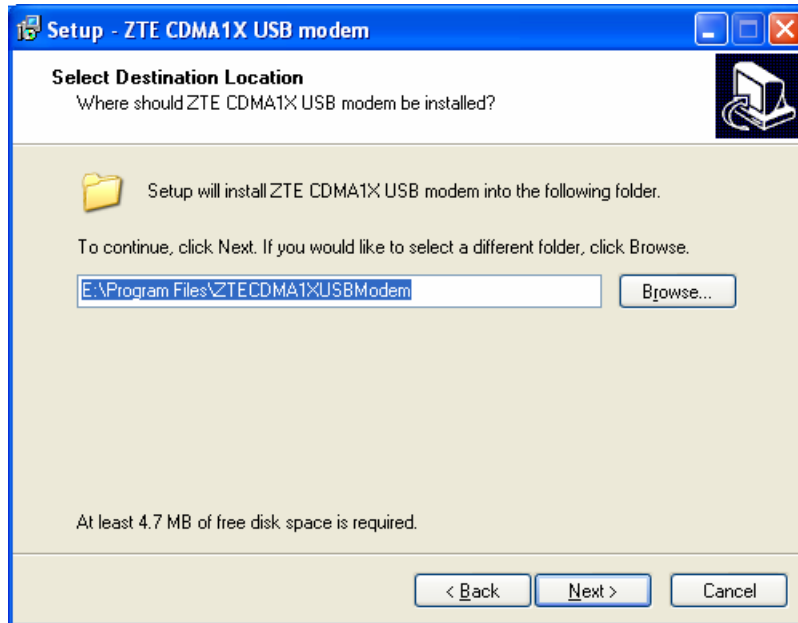
1. Please find “autosetup.exe” first in ZTE CDMA 1X USB modem CD, and double click the icon of autosetup.exe, then choose “English” when the picture displayed in the screen.



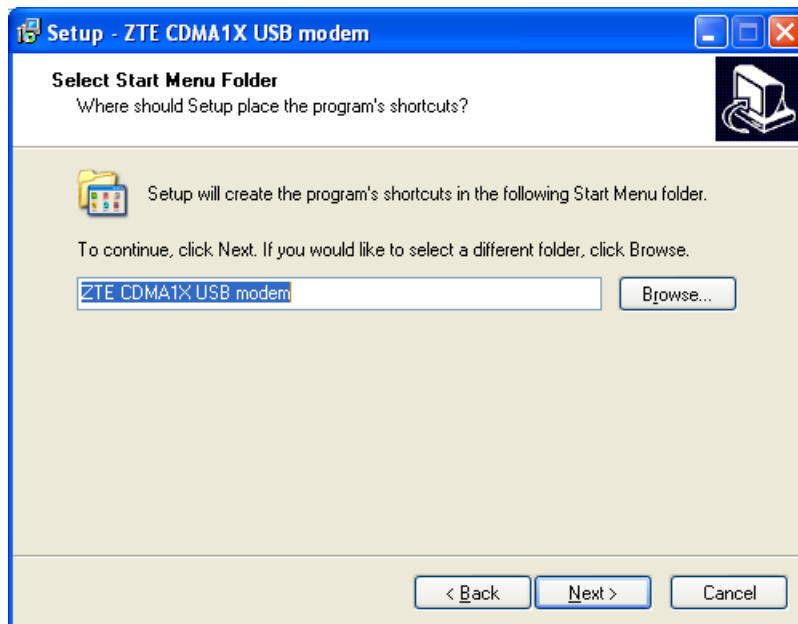
2. When you see this window, please click “Next”.



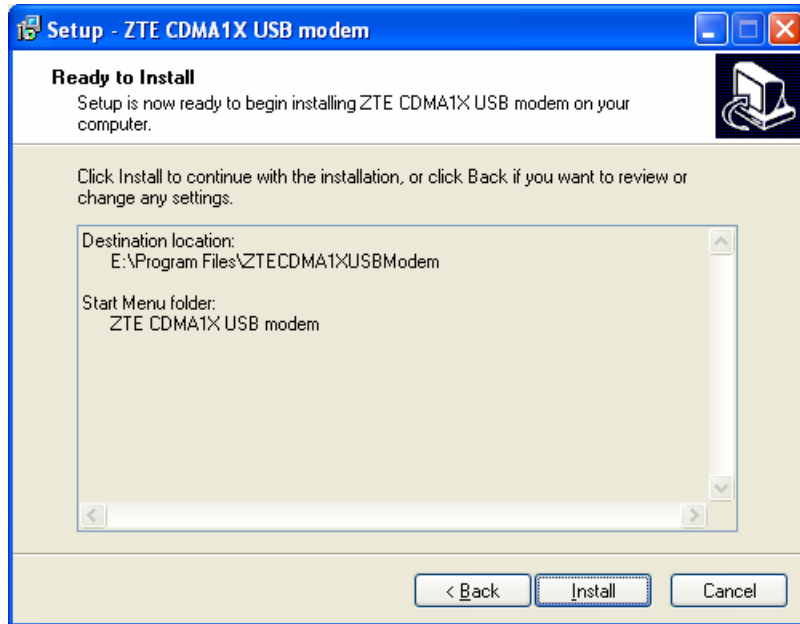
3. Select the location where the program is to be installed, then click “Next”.



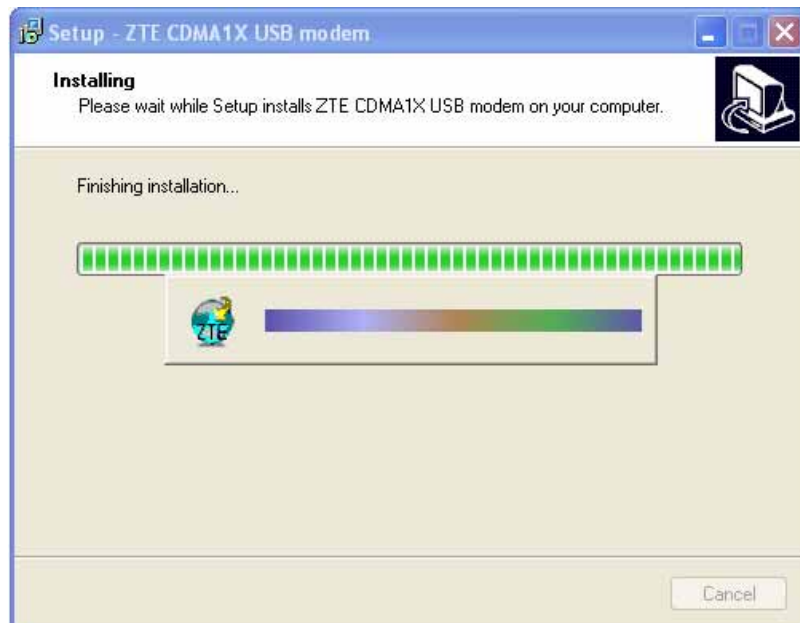
4. Select start menu folder, then click "Next".



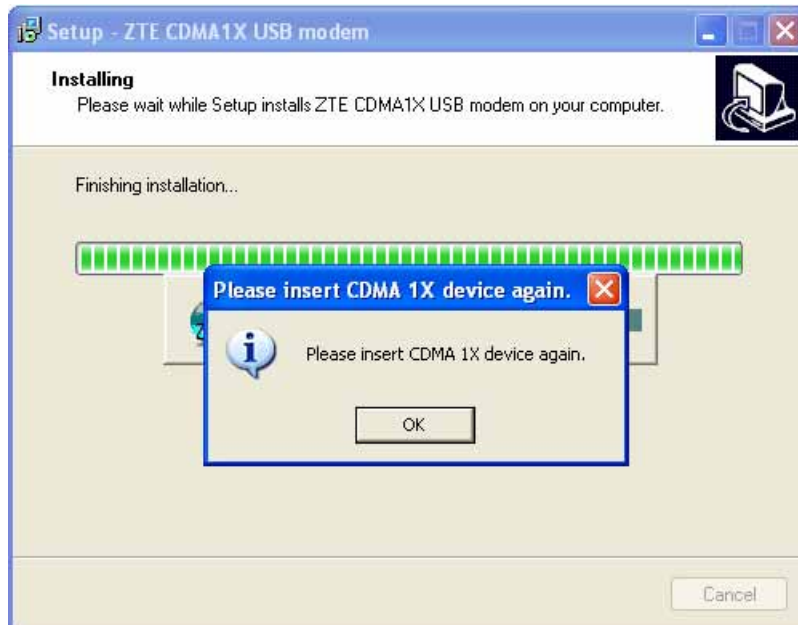
5. When you see this window, please click “Install”.



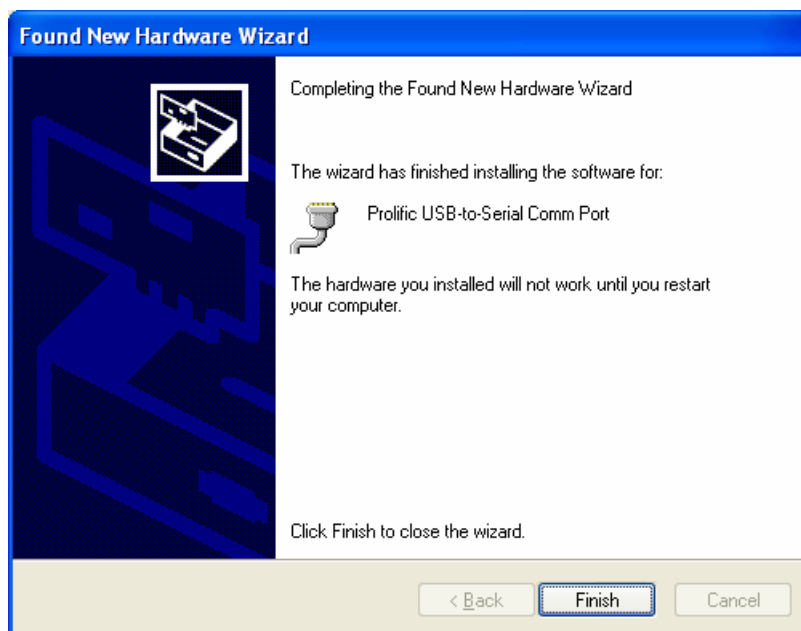
6. Please wait.



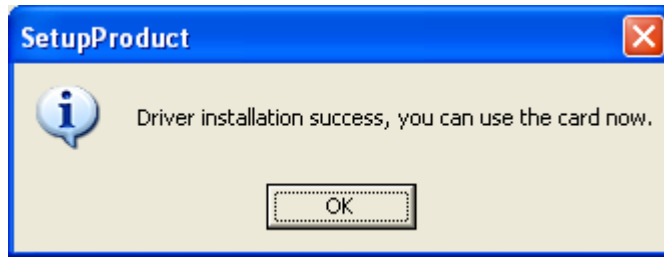
7. Please insert the ZTE CDMA 1X USB modem. (If your USB modem is in the USB interface, please insert it again)



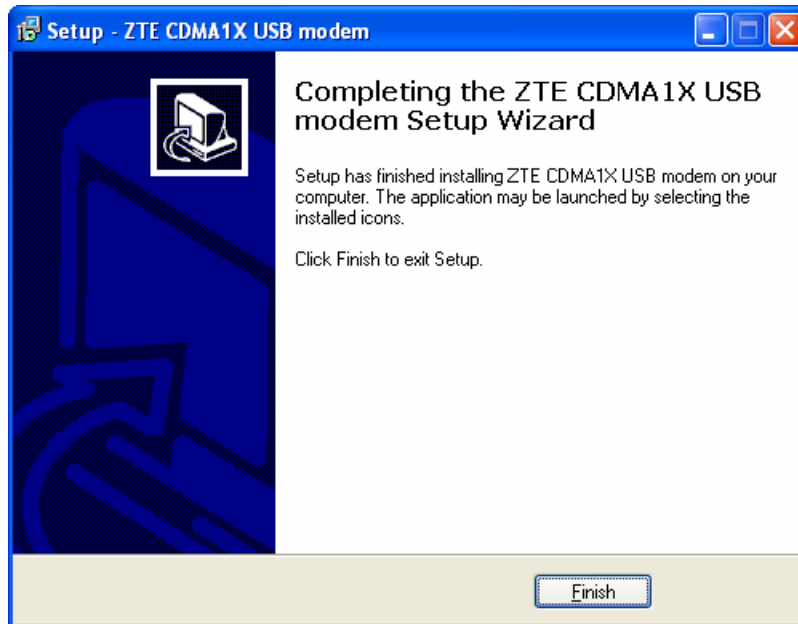
8. Click “Finish”.to continue.



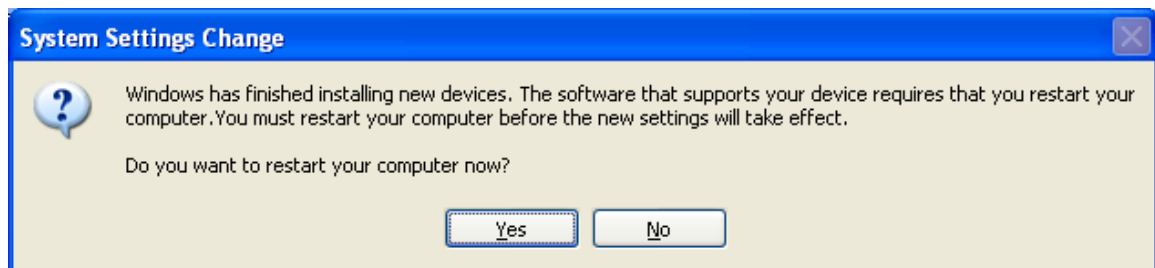
9. Driver installation success, click “OK”.to continue.



10. Click "Finish" to close the last screen of the wizard.



11. Please restart your computer.

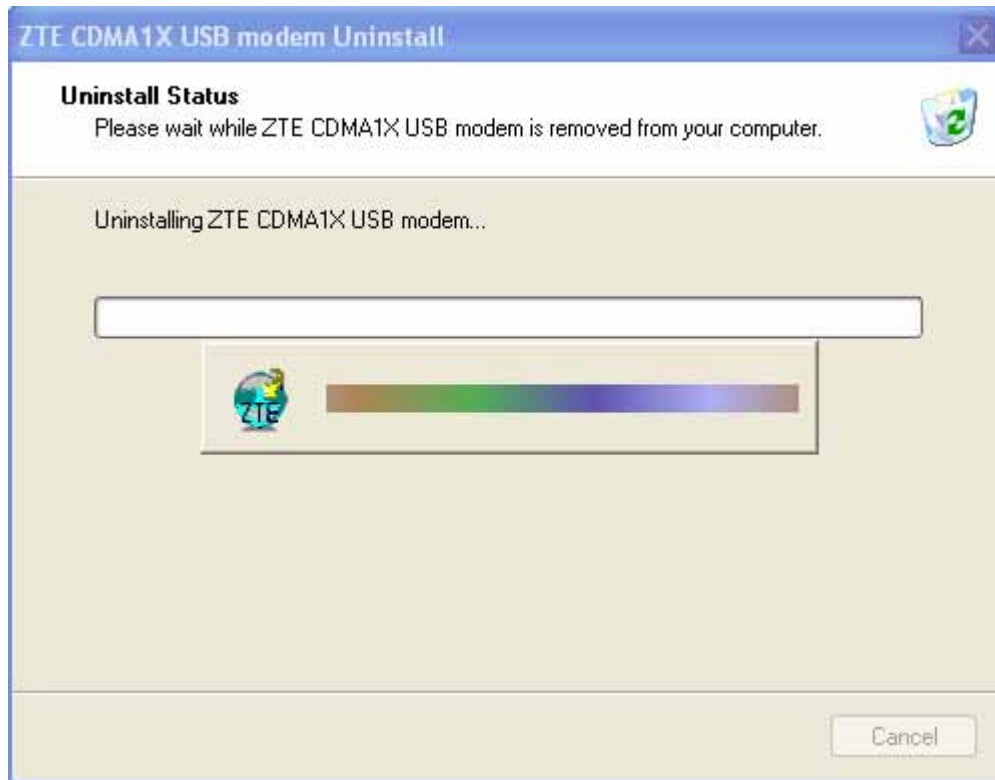


5.3.2 Uninstall

1. Select Start → Programs → ZTE CDMA1X USB modem → Uninstall ZTE USB modem. You will be asked if uninstall the modem. Click "Yes".



2. Please wait.




3. Click "OK" when uninstall is complete.



6. The Main Window and Icons

You can launch the program by:



- Double click , the icon of application for ZTE CDMA 1X card in the desktop.
- Or selecting Start -> Programs -> ZTE CDMA1X USB modem -> ZTE USB modem.

After initialization, the main window of the application will be displayed in the screen.

There are icons in the top of the main window. That indicates:



Connect/Disconnect



Connection record



Voice call



Call history



Write SMS



Read SMS



Phone Book



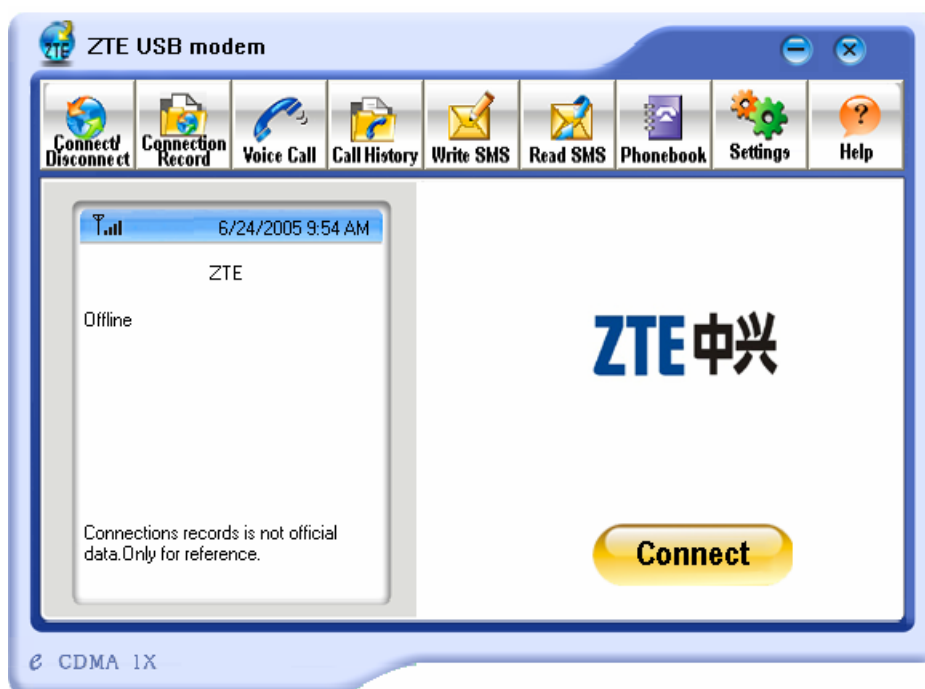
Settings



Help

Some features like **Voice call** , **Call history** , **Write SMS** , **Read SMS** , **Phone Book** may not be supported by your ZTE CDMA1X USB modem , the corresponding icons will not appear in the main window. Please contact your provider or agent.

7. Connect/Disconnect



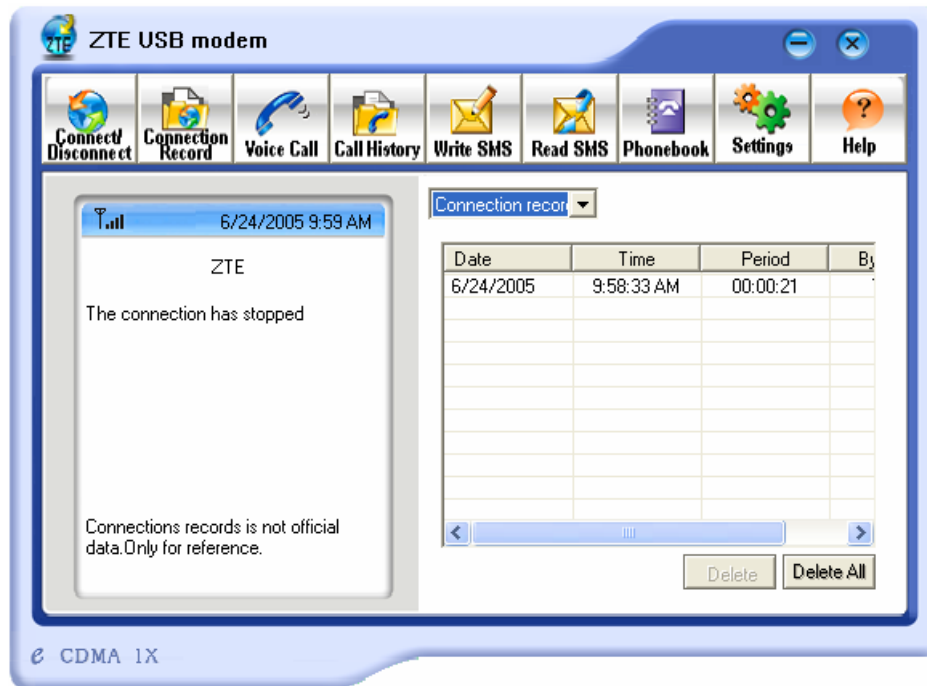
Connect to network:

1. Click “connect/disconnect” icon in main window.
2. Click “connect” button.

Disconnect:

1. Click “disconnect” button.

8. Connection Record



Note:

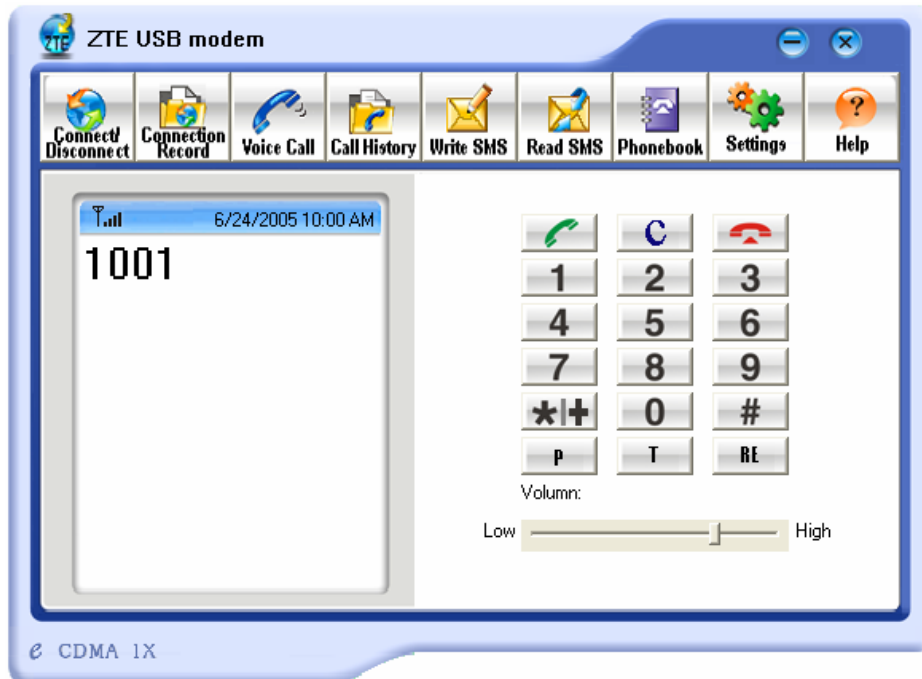
Connection Record is not official data. It's only for users' reference.

The connection record is displayed when you click the "Connection record" icon.

It records connect time and upload/download bytes for each connection. And it lists the monthly statistics.

9. Voice call

(If this feature is not supported by your ZTE CDMA1X USB modem, please skip over this chapter.)



Note:

1. Please confirm your earphone is connected with the ZTE CDMA1X USB modem when you want to make a voice call.
2. You can activate or deactivate the supplement services (call forward, call waiting etc.) by dialing the feature code. Please contact service provider for more detail.



The dialing pad for the USB modem is displayed when you click the “Voice call” icon. This performs the same functions as the dialing pad on a mobile phone.

Make a call:

1. Plug the earphone in the ZTE CDMA 1X USB modem if it is not plugged in the USB modem.
2. Click “voice call” icon;
3. Enter the number you want to dial by either clicking the number buttons on the dial pad or typing the numbers on your keyboard.

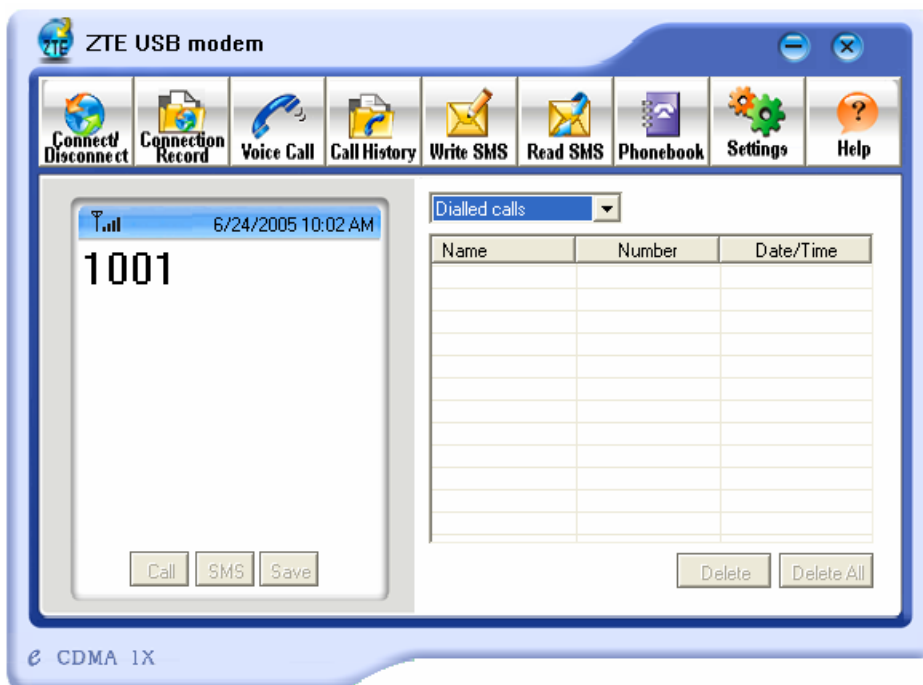
4. Click button .

Answer a call:

1. Connect an earphone to the USB modem, if one is not already connected.
2. Click button .
3. Click button  or press “ ESC ” key to end the call.

10.Call History

(If this feature is not supported by your ZTE CDMA1X USB modem, please skip over this chapter.)

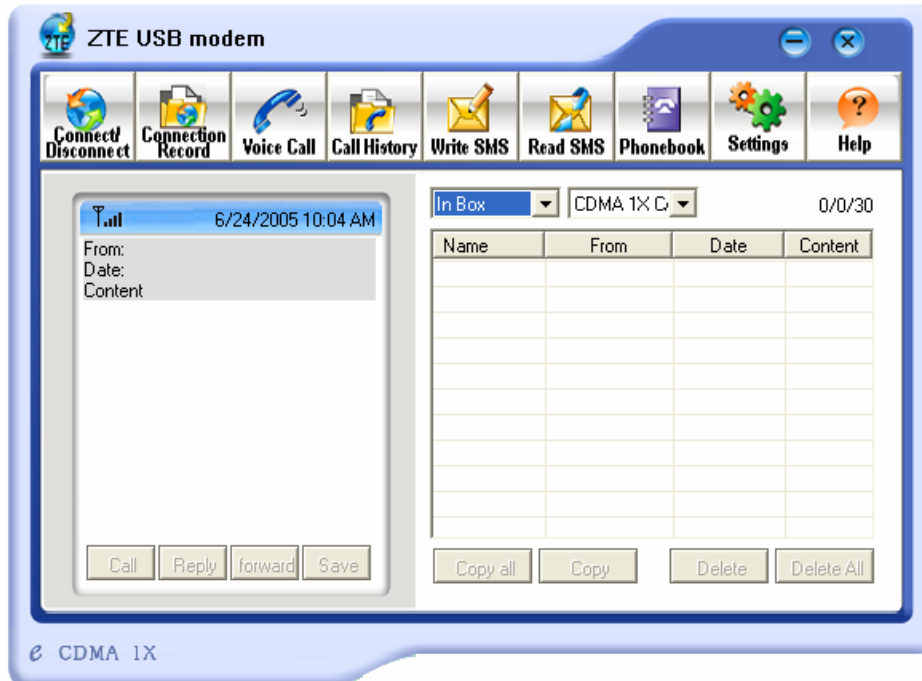


Call history maintains a record of your outgoing, incoming and missed calls.

You can add an entry to the Phone Book, make a call to a number contained in one of the call records, and send messages to a number contained in one of the call records.

12. Read Short Messages

(If this feature is not supported by your ZTE CDMA1X USB modem, please skip over this chapter.)



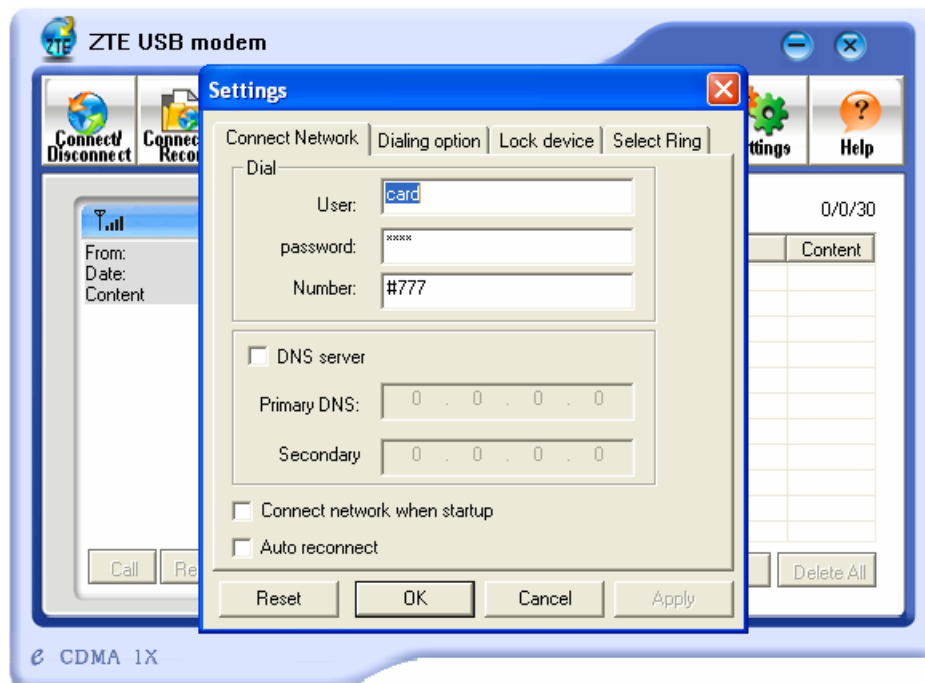
Incoming messages are stored in the Inbox. Outgoing messages are stored in the Outbox. In the Inbox or Outbox, you can view the messages, reply the messages, transfer the messages, and save the sender's number of the messages.

Messages store in PC or R-UIM card. You can copy them from one storage media to another by clicking "Copy" or "Copy all" button.

To read SMS messages:

1. Click "read SMS" icon in the window.
2. Select the Inbox or Outbox in the drop-down menu.
3. Click the message you want to read in the messages list that is in the right screen of the window.
4. You can view the content of the message in the left screen of the window.

14.Settings



Connection settings:

You can set the network connection parameters.

The settings are different in various networks.

For example:

In China Unicom, they are:

1. User: card
2. Password: card
3. Number: #777

15. Trouble Shooting

| Symptoms | Possible causes | Suggestions |
|--|---|--|
| The window displays the message: “Can not open the com port.” | The ZTE CDMA 1X USB modem is not in the USB interface. | Close the application and Re-insert the ZTE CDMA 1X USB modem, then run the application again. |
| | Other application is using the ZTE CDMA 1X USB modem. Such as “Hyper terminal”. | Close other applications. Then run the ZTE CDMA 1X USB modem application. |
| The window displays the message: “Can not found the R-UIM card. Please check whether the R-UIM card is touched well.” (only for those who need R-UIM card) | The R-UIM card is not inserted in the ZTE CDMA 1X USB modem. | Insert the R-UIM card in the ZTE CDMA 1X USB modem. |
| | The R-UIM card is inserted on the wrong side. | Insert the R-UIM card according to chapter 4. |
| | The R-UIM card error | Change R-UIM card. |
| No signal indicated | Antenna is not plugged in the ZTE CDMA 1X USB modem | Plug the antenna in the ZTE CDMA 1X USB modem |
| | Out of the network service area | Confirm it is in the CDMA network service area. |
| | Poor network signal | Reorientate your antenna |
| When attempting a dial-up data connection, window displays the message, “An authentication event has occurred” | User name or password is wrong. | Correct the settings. You can get the information from your service provider. e.g. In China Unicom, they are: User: card Password: card Number: #777 |
| | Your account does not have enough money. | Put money into your account or Contact your service provider. |
| | Network is busy or has problem | Try again after a few minutes. |

If the problems cannot be solved after the above handling, please

- Download the latest ZTE CDMA 1X USB modem program at <http://www.zteit.com> and reinstall it.
- Call [800-830-8218](tel:800-830-8218) or feed back your information directly by sending emails to zte_mobile@zte.com.cn for customer service. We will reply to you as fast as possible and provide you with good after-sales services.