

## 54M Wireless PCI Adapter TL-WN350G / TL-WN350GD

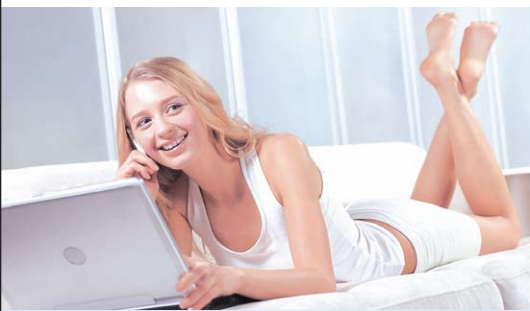


TL-WN350GD

Surf the internet, play online game,  
stream video wirelessly

Ease to configure and provides  
monitoring information

Up to 54Mbps wireless rate and fully  
compatible with 802.11b.



### Description:

The TP-LINK TL-WN350G / TL-WN350GD Wireless PCI Adapter gives you the flexibility to install on notebook PC in the most convenient location available, without the cost of running network cables.

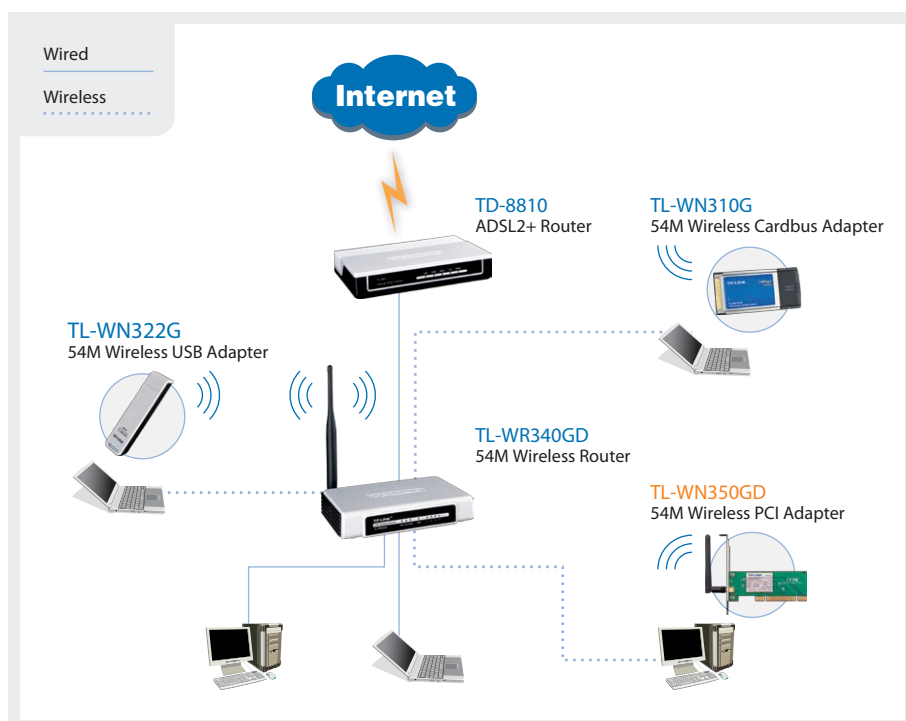
Its auto-sensing capability allows high packet transfer up to 54Mbps for maximum throughput, or dynamic range shifting to lower speeds due to distance or operating limitations in an environment with a lot of electromagnetic interference. It can also interoperate with all the 11Mbps wireless (802.11b) products. Your wireless communications are protected by up to WEP/WPA/WPA2 encryption, so your data stays secure.

## Specifications:

Standards	IEEE 802.11g IEEE 802.11b
Interface	32-bit PCI
Wireless Signal Rates	11g:54/48/36/24/18/12/9/6 Mbps (Auto Rate Sensing)
With Automatic Fallback	11b:11/5.5/3/2/1 Mbps (Auto Rate Sensing)
Frequency Range	2.4GHz
Output Power	18dBm
Modulation Type	1M DBPSK, 2M DQPSK, 5.5M/11M CCK, 6M/9M/12M/18M/24M/36M/48M/54M OFDM
Receiver Sensitivity	54M: -68dBm@10% PER 11M: -85dBm@8% PER 6M: -88dBm@10% PER 1M: -90dBm@8% PER
Antenna	Omni Directional, 2dBi, fixed (TL-WN350G) Omni Directional, 2dBi, detachable (TL-WN350GD)
Security	64/128/152 bit WEP, WPA/WPA2, WPA-PSK/WPA2-PSK (TKIP/AES)
Media Access Control	CSMA/CA with ACK
Range	Indoors up to 100m, outdoors up to 300m. (Standard transmission distance, it is limited in different environment.)
Certifications	FCC, CE
Support Operating System	Windows 2000/XP/Vista
Operating temperature	0°C~40°C (32°F~104°F)
Storage temperature	-40°C~70°C (-40°F~158°F)
Relative humidity	10% ~ 90%, non condensation
Storage Humidity	5%~95% non-condensing
Dimensions	133 × 121 × 22 (mm) 5.2 × 4.8 × 0.9 (in.)

\* EIRP-total effective radiated power is 100dBm(100mW), antenna gain will not influence wireless transmit power

## Diagram:



## Features:

- 32-bit PCI connector for desktop
- Supports Ad-Hoc/Infrastructure modes
- Supports 54/48/36/24/18/12/9/6Mbps or 11/5.5/2/1Mbps data transfer rates
- Supports 64/128/152 strength WEP encryptions, as well as WPA/WPA2 and WPA-PSK/WPA2-PSK encryptions and mechanisms
- Supports Windows 2000, XP, Vista
- Provides simple configuration and supervisor program
- Fixed Omni Directional antenna for TL-WN350G
- Detachable Omni Directional antenna for TL-WN350GD

## Package:

- 54M Wireless PCI Adapter
- Quick Installation Guide
- Resource CD, including:
  - Wireless Client Utility and Drivers
  - User Guide
  - Other Helpful Information

## Related Products:

- 54M Wireless ADSL2+ Router TD-W8910G
- 54M Wireless Router TL-WR340GD
- 54M Wireless USB Adapter TL-WN322G

Specifications are subject to change without notice. is a registered trademark of TP-LINK Technologies Co., Ltd. Other brands and product names are trademarks or registered trademarks of their respective holders. No part of the specifications may be reproduced in any form or by any means or used to make any derivative such as translation, transformation, or adaptation without permission from TP-LINK Technologies Co., Ltd.