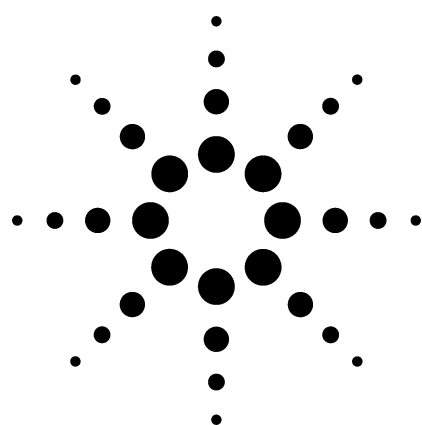


Natural Gas Analyzer SP1 2310-0042

Technical Overview



Application Highlights

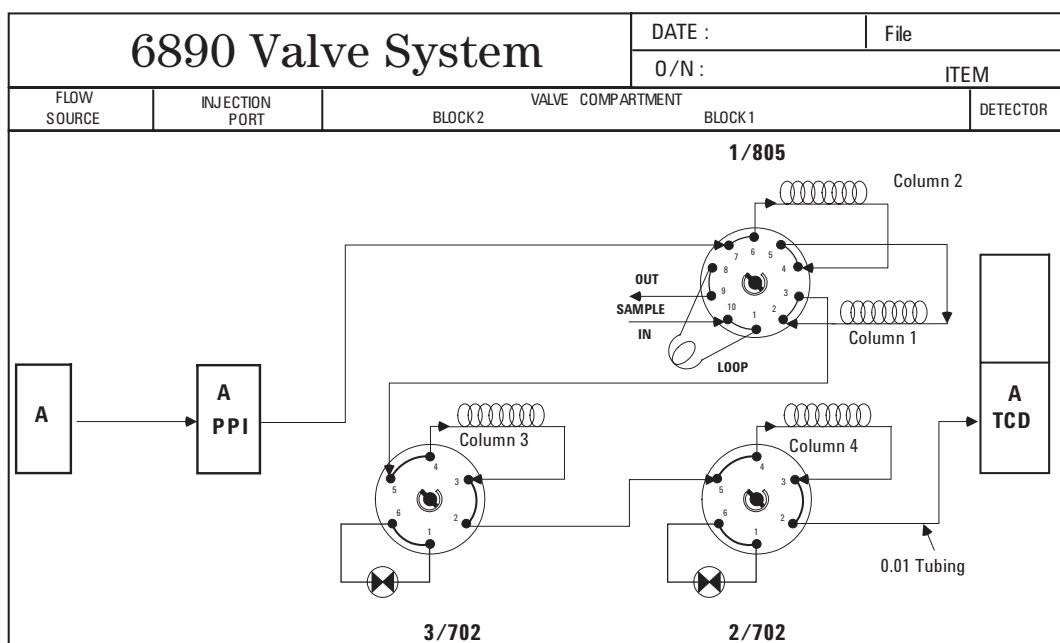
- A Thermal Conductivity Detector (TCD) to identify isobutane, n-butane, isopentane, n-pentane, carbon dioxide, ethane, propane, oxygen/argon composite, nitrogen and methane with an initial C6+ composite backflush to detector. The lower detection limit on the TCD is 100 ppm for all components.
- Analysis time is approximately 20 minutes.
- System compliant with Gas Processors Association Methods 2177 and/or 2261.

Configurations

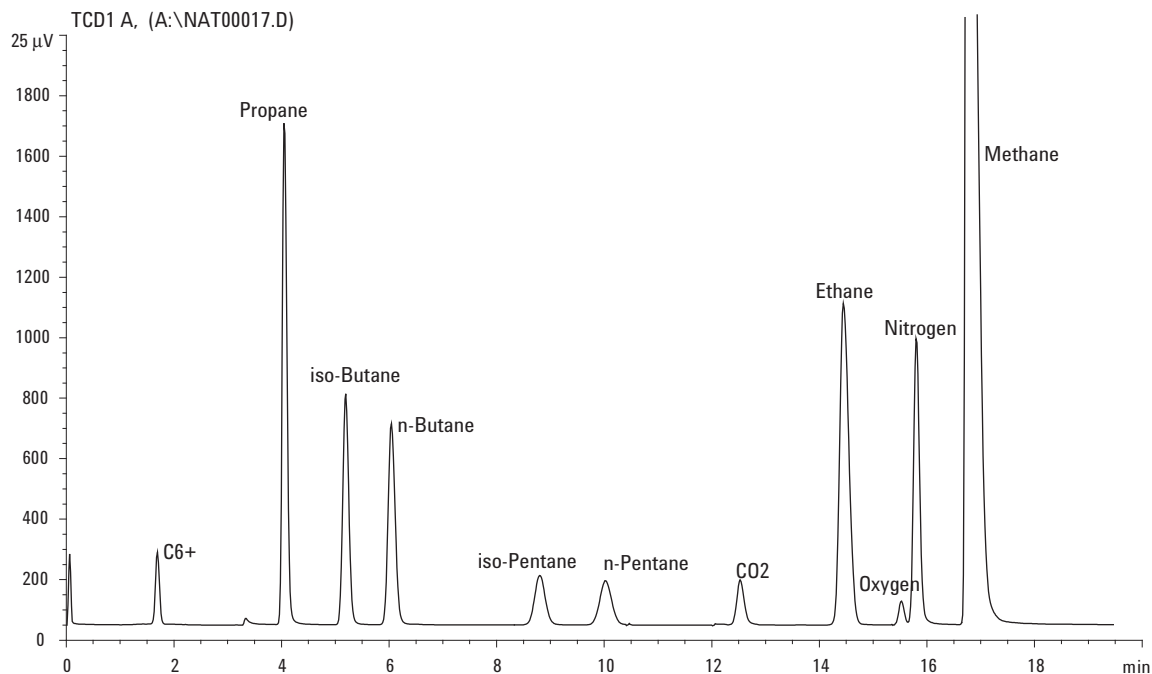
- GC must have options packed inlet (102) or pneumatics control module (PCM) (309), TCD (220), 0.5-mL sample loop (503), valve box (753), 10-port valve (805) and two 6-port valves (702).
- Special includes columns, checkout sample for valve timing, factory checkout with chromatograms, method supplied on disk for ChemStation and user manual.

For More Information

For more information on our products and services, visit our Web site at www.agilent.com/chem.



Agilent Technologies



Agilent shall not be liable for errors contained herein or for incidental or consequential damages in connection with the furnishing, performance, or use of this material.

Information, descriptions, and specifications in this publication are subject to change without notice.

© Agilent Technologies, Inc. 2003

Printed in the USA
May 9, 2003
5988-9299EN



Agilent Technologies